



- GENERAL NOTES
- THE DRAWINGS DEPICTED HEREIN REPRESENT PRELIMINARY LAYOUTS OF A WASTEWATER TREATMENT SYSTEM CAPABLE OF TREATING THE DOMESTIC WASTE CONSTITUENTS NOTED IN TABLE 1. COMMERCIAL OR NON-DOMESTIC WASTEWATER STREAMS ARE NOT INCLUDED IN THIS SCOPE AND MAY REQUIRE SEPARATE EVALUATION. CONTACT IWT FOR COMMERCIAL WASTEWATER TREATMENT REVIEW AND DESIGN REQUIREMENTS.
  - ECOPOD REACTOR BOX SHALL BE CONSTRUCTED OF HIGH DENSITY POLYETHYLENE (HDPE) OR AISI 304/304L STAINLESS STEEL.
  - TANK MATERIAL OPTIONS:
    - CARBON STEEL PER ASTM A36 w/COATING PER IWT STANDARDS.
    - FIBERGLASS REINFORCED PLASTIC (FRP) (NOT ALL MODELS).
    - PRECAST CONCRETE PER ENGINEER OF RECORD REQUIREMENTS, BY OTHERS.
    - CAST-IN-PLACE CONCRETE PER ENGINEER OF RECORD REQUIREMENTS, BY OTHERS.
  - BLOWERS, WEIRS, CONTROL PANELS, AND VARIOUS SMALL PARTS WILL BE SHIPPED UNASSEMBLED AND SECURELY PACKAGED, TO BE INSTALLED BY CONTRACTOR.
  - SEE INSTALLATION GUIDE FOR INSTALLATION DETAILS.
  - CONTACT AN IWT REPRESENTATIVE REGARDING DEVIATIONS FROM THESE STANDARDS.

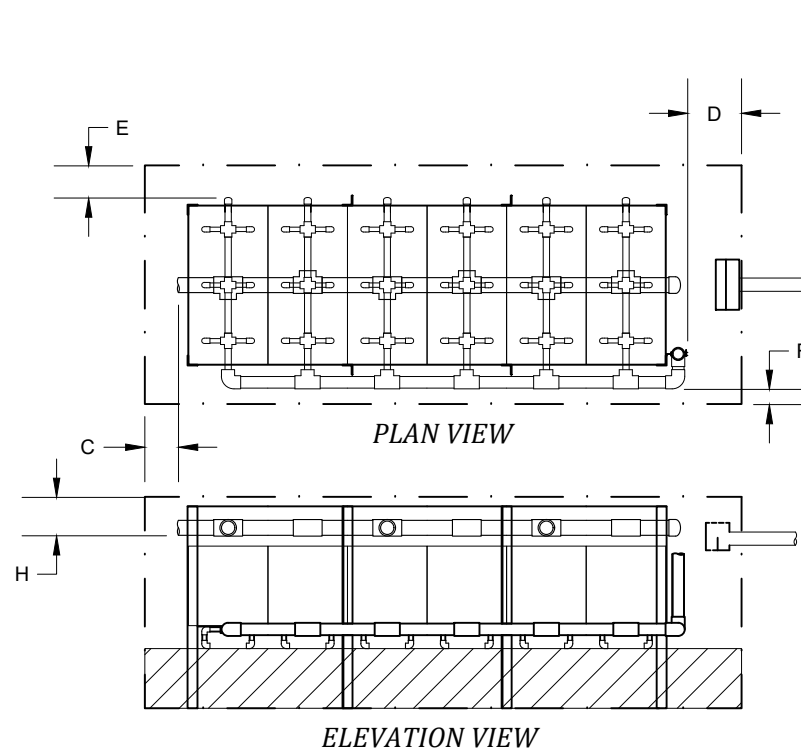
SITE ELEVATION		REACTOR MATERIAL	REACTOR WEIGHT		LAYOUT ID	A OVERALL LENGTH		B OVERALL WIDTH		B1 AIR HEADER CL DIM	
FT	M		LB	KG		IN	CM	IN	CM	IN	CM
0-3,000	0-914	HDPE			1	163	415	60	153	33	84
0-3,000	0-914	SS	920	418	1	154	392	59	150	32	82
0-3,000	0-914	SS	820	372	2	93	237	107	272	56	143
0-3,000	0-914	SS	850	386	3	106	270	83	211	44	112

1. SOME REACTOR LAYOUTS NOT AVAILABLE IN FIBERGLASS TANKS. CONTACT AN IWT REPRESENTATIVE FOR DETAILS.

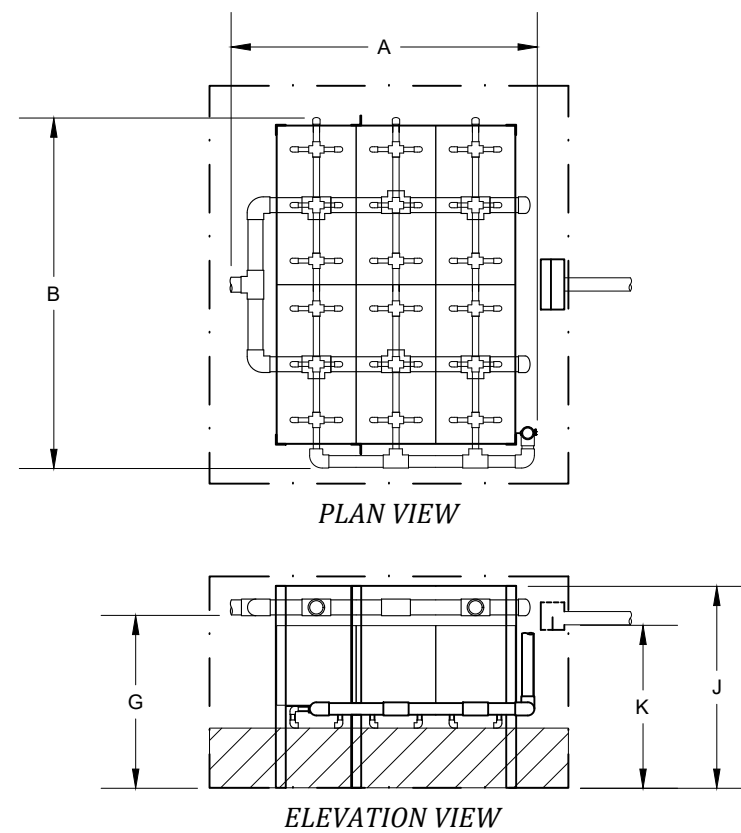
DIMENSION	IN	CM
C VESSEL FRONT SPACE	12	30
D VESSEL REAR SPACE	18	46
E AIR HEADER SIDE INSIDE SPACE	6	15
F NO HEADER SIDE INSIDE SPACE	6	15

DIMENSION	IN	CM
G INLET INVERT	50	127
H PLENUM SPACE ABOVE INLET INVERT	10	25
J MEDIA REACTOR HEIGHT	59	150
K OUTLET INVERT	47	119

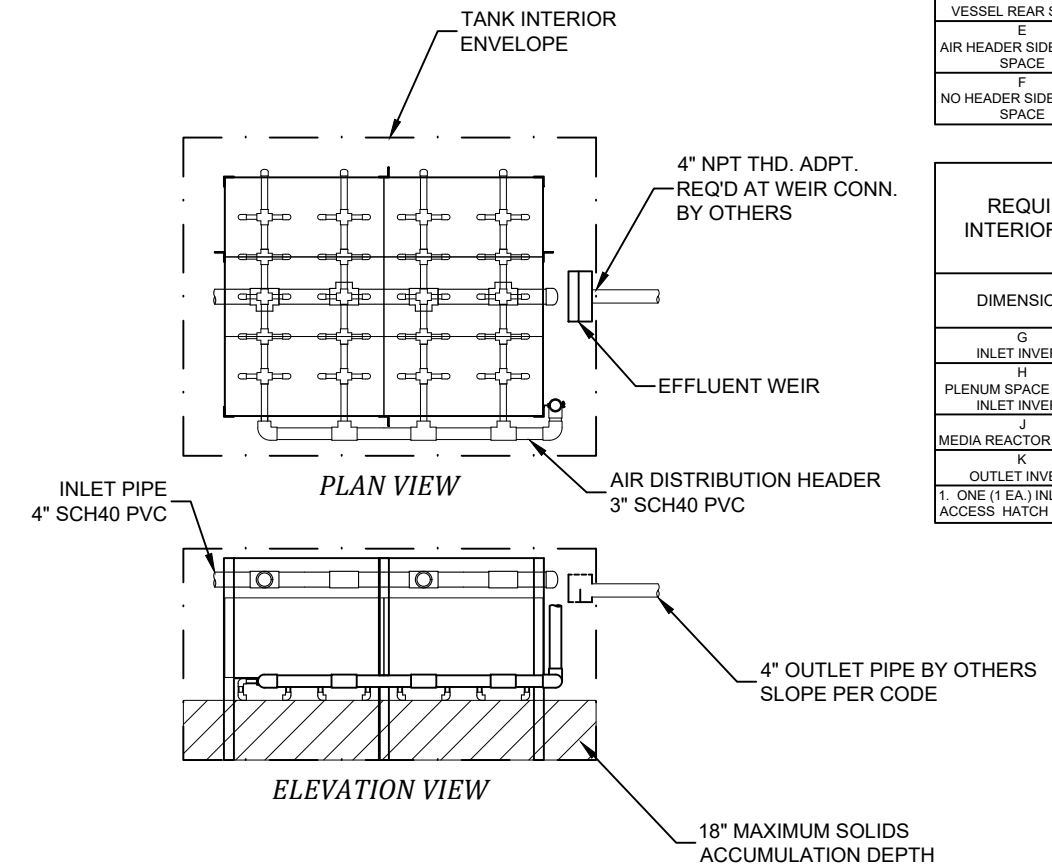
1. ONE (1 EA.) INLET AND ONE (1 EA.) OUTLET ACCESS HATCH REQUIRED, 24" DIA MINIMUM.



LAYOUT 1



LAYOUT 2



LAYOUT 3

NO.	DATE	INITIALS	DESCRIPTION
A	05/17/21	CGK	CREATED NEW LAYOUT

**Infiltrator**  
Water Technologies  
Part of ADS

INFILTRATOR WATER TECHNOLOGIES, LLC  
4 BUSINESS PARK RD, OLD SAYBROOK, CT 06475  
WWW.INFILTRATORWATER.COM  
PHONE: (800) 221-4436 / EMAIL: INFO@INFILTRATORWATER.COM

COPYRIGHT (C) 2024 INFILTRATOR WATER TECHNOLOGIES, LLC (IWT). INFORMATION CONTAINED HEREIN IS CONFIDENTIAL AND IS THE PROPERTY OF IWT. NO PART OF THIS DRAWING SHALL BE REPRODUCED, DISTRIBUTED, DISCLOSED, OR USED BY ANY PERSON OR ORGANIZATION, IN WHOLE OR IN PART, WITHOUT THE PRIOR WRITTEN PERMISSION OF IWT. THIS INFORMATION IS BASED ON SPECIFIC INPUT PARAMETERS AND IS FOR BUDGETARY OR PRELIMINARY USE ONLY. USE AND INTERPRETATION OF THIS INFORMATION AND DETERMINING THE APPLICABILITY TO A SPECIFIC PROJECT IS AT THE SOLE DISCRETION OF THE USER AND/OR THE ENGINEER OF RECORD.

ECOPOD E200S-N  
STANDARD DESIGN FOR BOD AND NITRIFICATION

GENERAL ARRANGEMENT  
LAYOUT DIMENSIONS

HORIZ. SCALE	PROJECT NO.
N/A	N/A
VERT. SCALE	DATE
N/A	05/17/2021
DRAWN BY	DESIGNED BY
CGK	AOB
DRAWING NO.	SHEET NO.
C1.1	02 of 02

C:\Users\kenneth.michael\Desktop\Drawings\ECOPOD\ECOPOD STANARD COMMERCIAL\Standard Commercial EcoPod Drawings Rev D.dwg