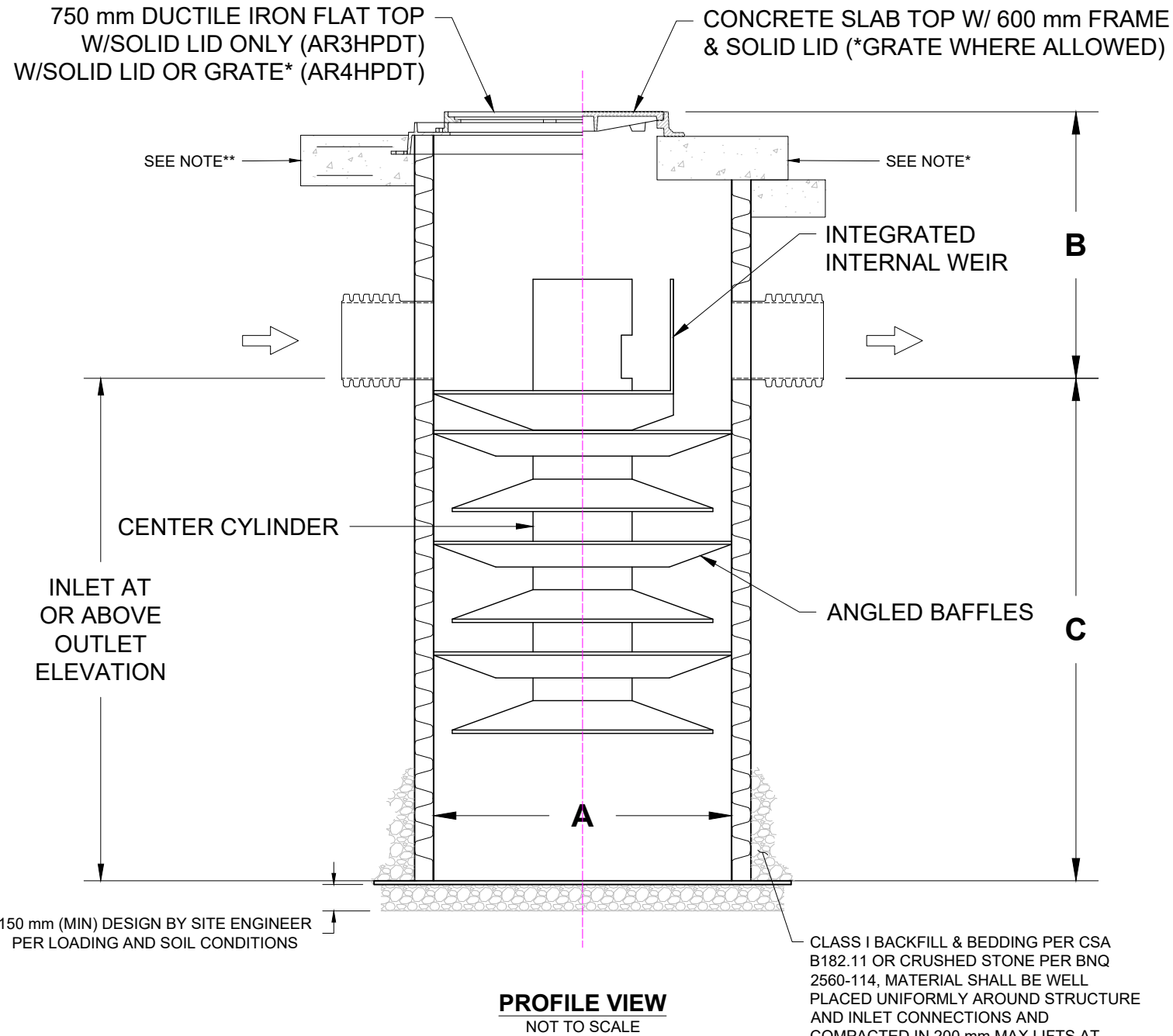


PRODUCT SPECIFICATIONS

- THE STORMWATER TREATMENT UNIT SHALL BE AN INLINE UNIT CAPABLE OF CONVEYING 100% OF THE DESIGN PEAK FLOW. IF PEAK FLOW RATES EXCEED MAXIMUM HYDRAULIC RATE, THE UNIT SHALL BE INSTALLED OFFLINE.
- THE ARCADIA UNIT SHALL BE DESIGNED TO REMOVE OIL AND GRIT (TSS) PER LOCAL JURISDICTIONAL REQUIREMENTS, AND ACCORDING TO THE PERFORMANCE DEMONSTRATED THROUGH TESTING AT AN ISO-CERTIFIED LABORATORY UNDER THE 2023 CANADIAN PROCEDURE FOR LABORATORY TESTING OF OIL-GRIT SEPARATORS. SIZING OF THE UNIT SHALL BE IN ACCORDANCE WITH THE REQUIREMENTS OF THE ISO 14034 ETV (ENVIRONMENTAL TECHNOLOGY VERIFICATION) STANDARD, AND SUBSEQUENTLY CONFIRMED UNDER THE VERIFIGLOBAL PERFORMANCE VERIFICATION PROTOCOL. REFER TO THE VERIFICATION STATEMENT FOR SPECIFIC PERFORMANCE PARAMETERS.



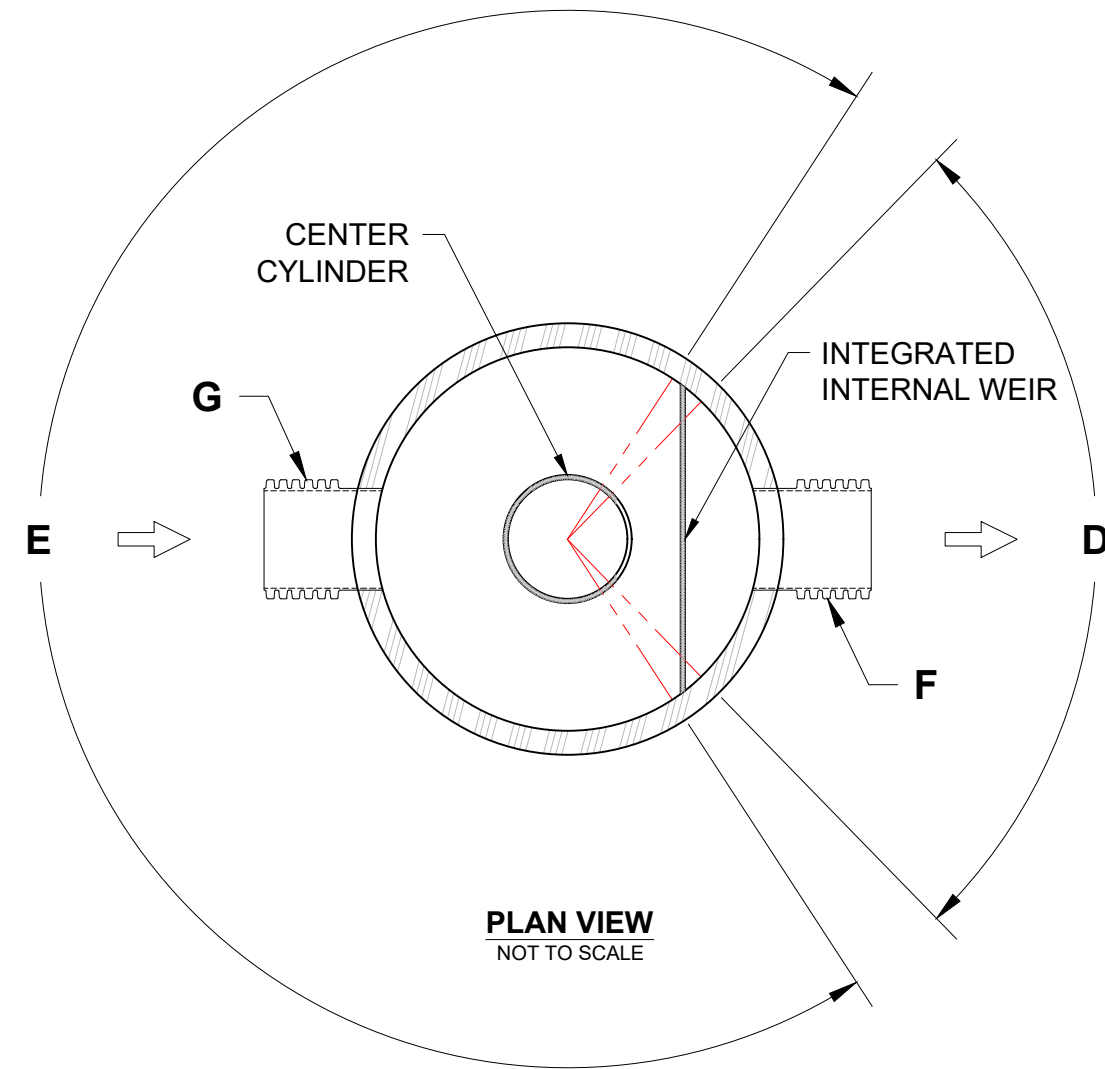
PROFILE VIEW
NOT TO SCALE

CLASS I BACKFILL & BEDDING PER CSA B182.11 OR CRUSHED STONE PER BNQ 2560-114, MATERIAL SHALL BE WELL PLACED UNIFORMLY AROUND STRUCTURE AND INLET CONNECTIONS AND COMPACTED IN 200 mm MAX LIFTS AT LEAST 450 mm FROM OUTSIDE OF STRUCTURE.

ATTENTION

THIS TREATMENT UNIT WAS DESIGNED WITHOUT SITE-SPECIFIC INFORMATION ON GROUNDWATER LEVELS. THE SITE DESIGN ENGINEER IS RESPONSIBLE FOR DETERMINING THE GROUNDWATER LEVEL RELATIVE TO THE BURIED DEPTH OF THE UNIT. IF THE GROUNDWATER DEPTH ABOVE THE BOTTOM OF THE SUMP EXCEEDS ONE-THIRD THE DEPTH OF THE UNIT, CONTACT ADS FOR SOLUTIONS. SEE TECHNICAL NOTE 5.22 FOR GUIDANCE.

MODEL	STRUCTURE DIAMETER "A"	MIN. RIM TO OUTLET DEPTH "B"	SUMP DEPTH "C"	ALLOWABLE PIPE ANGLE (WHERE APPLICABLE)		MAXIMUM PIPE DIAMETER	
				OUTLET "D"	INLET "E"	OUTLET "F"	INLET "G"
AR3HP	900 mm	914 mm	1.397 m	100.0°	241.5°	450 mm	450 mm
AR3HPDT	900 mm	762 mm	1.397 m	100.0°	241.5°	450 mm	450 mm
AR4HP	1200 mm	914 mm	2.057 m	99.5°	247.0°	600 mm	750 mm
AR4HPDT	1200 mm	762 mm	2.057 m	99.5°	247.0°	600 mm	750 mm
AR5HP	1500 mm	914 mm	2.190 m	108.5°	240.5°	900 mm	900 mm



NOTES:

- ENGINEER / CONTRACTOR TO CONFIRM PIPE MATERIALS AND APPLICABLE ADAPTERS
- CONTRACTOR IS RESPONSIBLE FOR MATERIAL AND LABOUR TO BRING CASTINGS TO FINISHED GRADE
- CONTRACTOR TO MEASURE HEIGHT OF STRUCTURE TO ENSURE THAT DEPTH OF EXCAVATION IS CORRECT.
- UNIT SHALL CONFORM TO CL-625 LOAD RATINGS.
- STUB SIZES SMALLER THAN 300 mm REQUIRE THE USE OF AN INSERTA TEE

* CONCRETE SLAB DIMENSIONS ARE FOR GUIDELINE PURPOSES ONLY. ACTUAL CONCRETE SLAB MUST BE DESIGNED TAKING INTO CONSIDERATION LOCAL SOIL CONDITIONS, TRAFFIC LOADING, & OTHER APPLICABLE DESIGN FACTORS.

** SUPPLIED BY ADS FOR LOADS NOT TO EXCEED CL-625; SEE STD-414 FOR FURTHER DETAILS OF FRAME & COVER. ALTERNATE LID & FRAME BY OTHERS AS ALLOWED PER DESIGN ENGINEER. FRAME TO BE SUPPORTED BY CONCRETE COLLAR.

ARCADIA
GENERAL CONFIGURATION
HP MANHOLE

DATE: 03/27/26 DRAWN: CJD CHECKED: JLM
DRAWING #: 530-011_C

DATE	DRWN	CHKD	DESCRIPTION

ARCADIA
Stormwater Separator

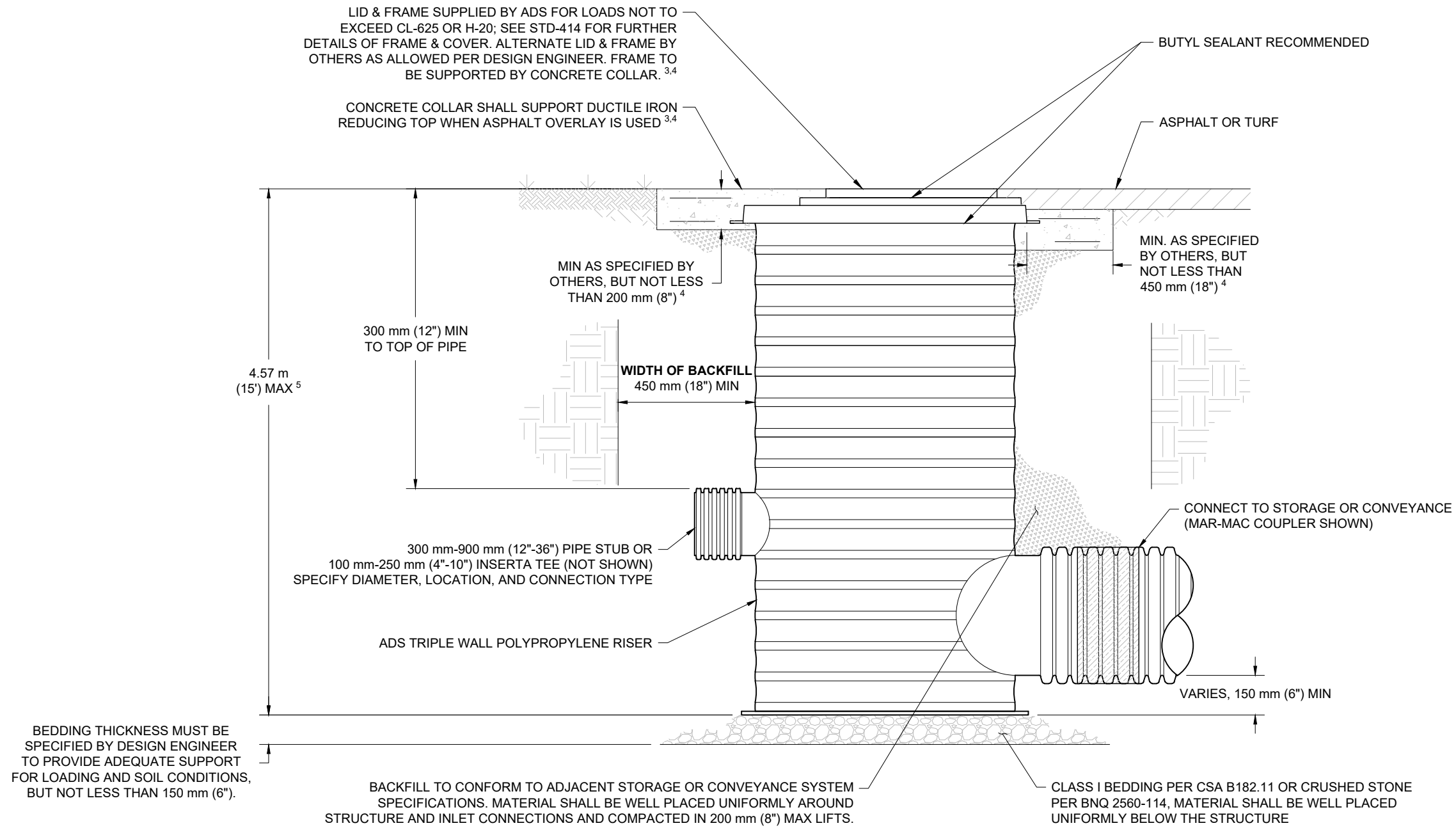
WWW.ADSP.IPE.COM



THIS DRAWING HAS BEEN PREPARED BASED ON INFORMATION PROVIDED TO ADS/FORMTECH UNDER THE DIRECTION OF THE PROJECT'S ENGINEER OF RECORD (EOR) OR OTHER PROJECT REPRESENTATIVE. THIS DRAWING IS NOT INTENDED FOR USE IN BIDDING OR CONSTRUCTION WITHOUT THE EOR'S PRIOR APPROVAL. EOR SHALL REVIEW THIS DRAWING PRIOR TO BIDDING AND/OR CONSTRUCTION. IT IS THE ULTIMATE RESPONSIBILITY OF THE EOR TO ENSURE THAT THE PRODUCT(S) DEPICTED AND ALL ASSOCIATED DETAILS MEET ALL APPLICABLE LAWS, REGULATIONS, AND PROJECT REQUIREMENTS.

HP MANHOLE W/DUCTILE IRON FLAT FRAME INSTALLATION

NTS



NOTES:

1. ADS POLYPROPYLENE BASINS ARE TO BE CUSTOM MANUFACTURED ACCORDING TO PLAN DETAILS.
2. ADAPTERS CAN BE MOUNTED ON ANGLES 0° TO 359°. TO DETERMINE MAXIMUM ANGLE BETWEEN ADAPTERS, SEE DRAWING NO. 7009-110-026
3. AVOID CONSTRUCTION LOADING ON REDUCING PLATE AND STRUCTURE PRIOR TO CONCRETE COLLAR INSTALLATION
4. CONCRETE SLAB DIMENSIONS ARE FOR GUIDELINE PURPOSES ONLY. ACTUAL CONCRETE SLAB MUST BE DESIGNED TAKING INTO CONSIDERATION LOCAL SOIL CONDITIONS, TRAFFIC LOADING, AND OTHER APPLICABLE DESIGN FACTORS.
5. FOR BURIAL DEPTHS GREATER THAN 4.57 m (15'), OR WHERE GROUNDWATER WILL BE ENCOUNTERED, CONTACT ADS ENGINEERING.
6. GRATES/SOLID COVER SHALL BE DUCTILE IRON PER ASTM A536 GRADE 70-50-05.
7. FRAMES & REDUCING PLATE SHALL BE DUCTILE IRON PER ASTM A536 GRADE 70-50-05.

ARCADIA
GENERAL CONFIGURATION
DUCTILE IRON FLAT TOP

DATE: 03/27/26 DRAWN: JLM
DRAWING #: 530-011_C CHECKED: AT

DATE	DRWN	CHKD	DESCRIPTION

ARCADIA
Stormwater Separator

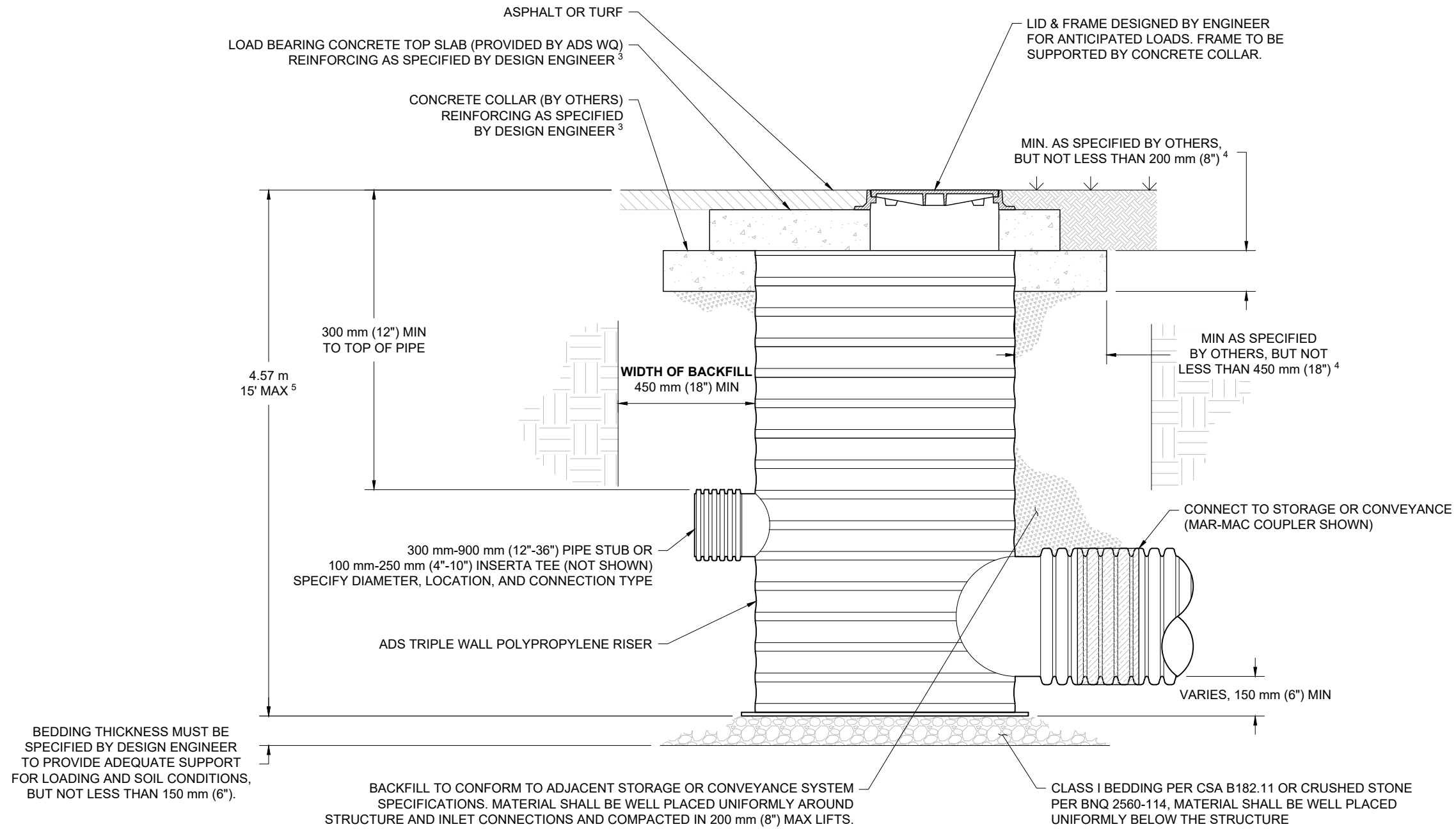
WWW.ADSPPIPE.COM

ADS

THIS DRAWING HAS BEEN PREPARED BASED ON INFORMATION PROVIDED TO ADS BY THE PROJECT'S ENGINEER OR RECORD (EOR) OR OTHER PROJECT REPRESENTATIVE. THIS DRAWING IS NOT INTENDED FOR USE IN BIDDING OR CONSTRUCTION WITHOUT THE EOR'S PRIOR APPROVAL. EOR SHALL REVIEW THIS DRAWING PRIOR TO BIDDING AND/OR CONSTRUCTION. IT IS THE ULTIMATE RESPONSIBILITY OF THE EOR TO ENSURE THAT THE PRODUCT(S) DEPICTED AND ALL ASSOCIATED DETAILS MEET ALL APPLICABLE LAWS, REGULATIONS, AND PROJECT REQUIREMENTS.

HP MANHOLE W/CONCRETE TOP SLAB FOR WQ INSTALLATION

NTS



NOTES:

1. ADS POLYPROPYLENE BASINS ARE TO BE CUSTOM MANUFACTURED ACCORDING TO PLAN DETAILS.
2. ADAPTERS CAN BE MOUNTED ON ANGLES 0° TO 359°. TO DETERMINE MAXIMUM ANGLE BETWEEN ADAPTERS, SEE DRAWING NO. 7009-110-026
3. AVOID CONSTRUCTION LOADING ON REDUCING PLATE AND STRUCTURE PRIOR TO CONCRETE COLLAR INSTALLATION
4. CONCRETE SLAB DIMENSIONS ARE FOR GUIDELINE PURPOSES ONLY. ACTUAL CONCRETE SLAB MUST BE DESIGNED TAKING INTO CONSIDERATION LOCAL SOIL CONDITIONS, TRAFFIC LOADING, AND OTHER APPLICABLE DESIGN FACTORS.
5. FOR BURIAL DEPTHS GREATER THAN 4.57 m (15'), OR WHERE GROUNDWATER WILL BE ENCOUNTERED, CONTACT ADS ENGINEERING.

ARCADIA
GENERAL CONFIGURATION
CONCRETE TOP SLAB

DATE: 03/27/26 DRAWN: JLM
DRAWING #: 530-011_C CHECKED: AT

DATE	DRWN	CHKD	DESCRIPTION

ARCADIA
Stormwater Separator

www.adspipec.com

ADS

THIS DRAWING HAS BEEN PREPARED BASED ON INFORMATION PROVIDED TO ADS BY THE PROJECT'S ENGINEER OF RECORD (EOR) OR OTHER PROJECT REPRESENTATIVE. THIS DRAWING IS NOT INTENDED FOR USE IN BIDDING OR CONSTRUCTION WITHOUT THE EOR'S PRIOR APPROVAL. EOR SHALL REVIEW THIS DRAWING PRIOR TO BIDDING AND/OR CONSTRUCTION. IT IS THE ULTIMATE RESPONSIBILITY OF THE EOR TO ENSURE THAT THE PRODUCT(S) DEPICTED AND ALL ASSOCIATED DETAILS MEET ALL APPLICABLE LAWS, REGULATIONS, AND PROJECT REQUIREMENTS.