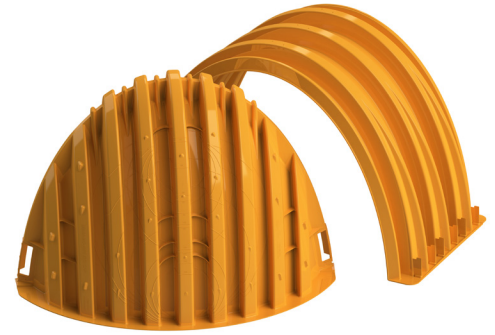


# StormTech<sup>®</sup> MC-4500 Chamber

Designed to meet the most stringent industry performance standards for superior structural integrity while providing designers with a cost-effective method to save valuable land and protect water resources. The StormTech system is designed primarily to be used under parking lots, thus maximizing land usage for private (commercial) and public applications. StormTech chambers can also be used in conjunction with Green Infrastructure, thus enhancing the performance and extending the service life of these practices.



## Nominal Chamber Specifications (not to scale)

**Size (L x W x H)**  
1321 mm x 2540 mm x 1524 mm  
52" x 100" x 60"

**Chamber Storage**  
3.01 m<sup>3</sup> (106.5 ft<sup>3</sup>)

**Min. Installed Storage\***  
4.60 m<sup>3</sup> (162.6 ft<sup>3</sup>)

**Weight**  
56.7 kg (125 lbs)

**Shipping**  
7 chambers/pallet  
5 end caps/pallet  
11 pallets/truck

\*Assumes a minimum of 300 mm (12") of stone above, 230 mm (9") of stone below chambers, 230 mm (9") of stone between chambers/ end caps and 40% stone porosity.

## Nominal End Cap Specifications (not to scale)

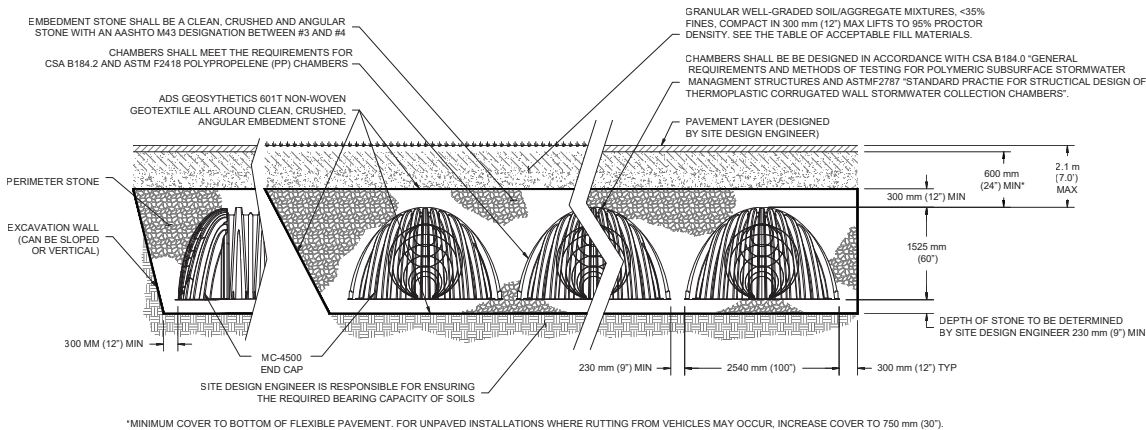
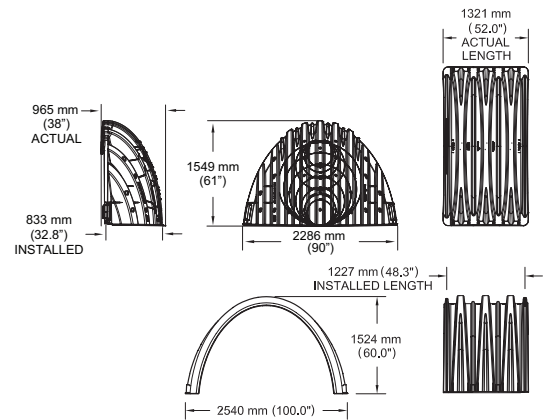
**Size (L x W x H)**  
965 mm x 2286 mm x 1549 mm  
38" x 90" x 61"

**End Cap Storage**  
1.12 m<sup>3</sup> (39.5 ft<sup>3</sup>)

**Min. Installed Storage\***  
3.26 m<sup>3</sup> (115.3 ft<sup>3</sup>)

**Weight**  
40.8 kg (90.0 lbs)

\*Assumes a minimum of 300 mm (12") of stone above, 230 mm (9") of stone below, 300 mm (12") of stone perimeter, 230 mm (9") of stone between chambers/ end caps and 40% stone porosity.



# StormTech MC-4500 Specifications

## Storage Volume Per Chamber

	Bare Chamber Storage m <sup>3</sup> (ft <sup>3</sup> )	Chamber and Stone Foundation Depth mm (in)			
		230 mm (9")	300 mm (2")	375 mm (15")	450 mm (18")
Chamber	3.01 (106.5)	4.60 (162.6)	4.71 (166.3)	4.81 (169.9)	4.91 (173.6)
End Cap	1.12 (39.5)	3.26 (115.3)	3.36 (118.6)	3.45 (121.9)	3.54 (125.2)

**Note:** Assumes 230 mm (9") row spacing, 40% stone porosity, 300 mm (12") stone above and includes the bare chamber/end cap volume. End cap volume assumes 300 mm (12") stone perimeter in front of end cap.

## Amount of Stone Per Chamber

Metric Kilograms (m <sup>3</sup> )	Stone Foundation Depth			
	230 mm	300 mm	375 mm	450 mm
Chamber	6713 (4.0)	7076 (4.2)	7529 (4.5)	7983 (4.7)
End Cap	8890 (5.3)	9253 (5.5)	9616 (5.8)	10069 (6.0)
English Tons (yds <sup>3</sup> )	9"	12"	15"	18"
Chamber	7.4 (5.2)	7.8 (5.5)	8.3 (5.9)	8.8 (6.2)
End Cap	9.8 (7.0)	10.2 (7.3)	10.6 (7.6)	11.1 (7.9)

**Note:** 300 mm (12") of stone above and 230 mm (9") row spacing and 300 mm (12") of perimeter stone in front of end caps.

## Volume Excavation Per Chamber m<sup>3</sup> (yd<sup>3</sup>)

	Stone Foundation Depth			
	230 mm (9")	300 mm (2")	375 mm (15")	450 mm (18")
Chamber	8.0 (10.5)	8.3 (10.8)	8.5 (11.2)	8.8 (11.5)
End Cap	7.4 (9.7)	7.6 (10.0)	7.9 (10.3)	8.1 (10.6)

**Note:** Assumes 230 mm (9") of separation between chamber rows, 300 mm (12") of perimeter in front of the end caps, and 600 mm (24") of cover. The volume of excavation will vary as depth of cover increases.

**Working on a project?**

Visit us at [adspipe.ca/water-management-solutions/retention](https://adspipe.ca/water-management-solutions/retention)

and utilize the Design Tool

