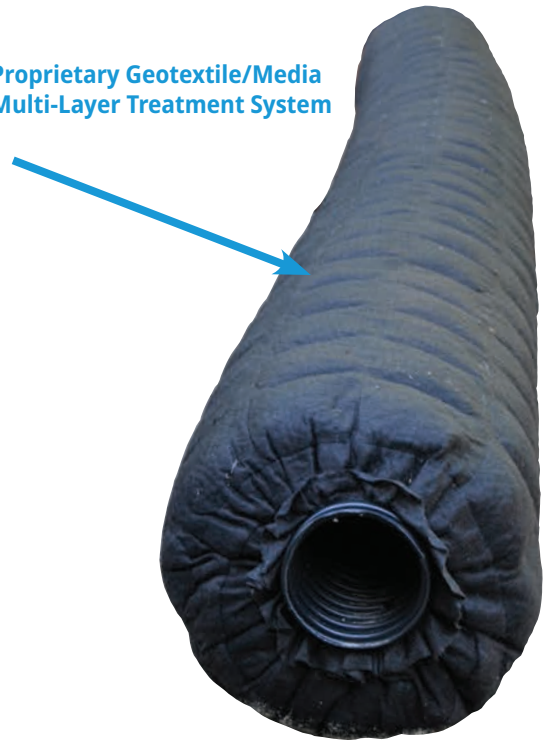




Sand-Lined Wastewater Treatment and Dispersal

Advanced Treatment Leachfield (ATL) by Infiltrator is a sand-lined combined treatment and dispersal system. Manufactured using a significant amount of recycled materials, ATL is an environmentally friendly alternative to a traditional stone and pipe drainfield and utilizes a smaller installation footprint.

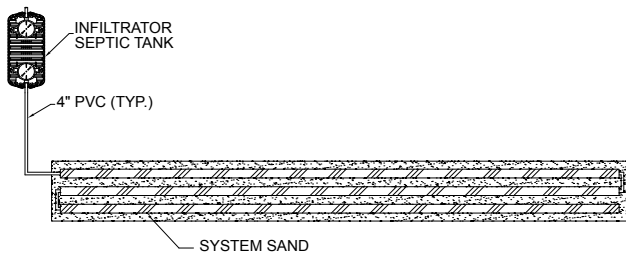
Proprietary Geotextile/Media Multi-Layer Treatment System



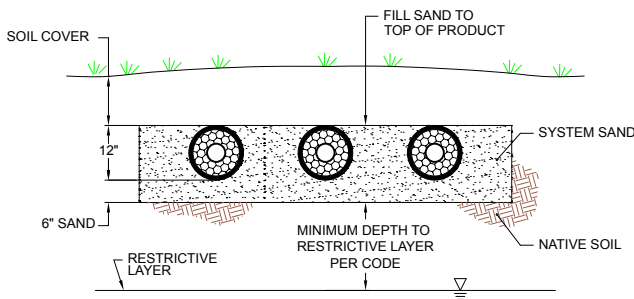
Benefits

- Testing in accordance with NSF/ANSI 40 has determined that the ATL system is capable of treating domestic strength wastewater to Class I levels.
- A passive advanced leachfield treatment – no moving parts or power required
- Modules are quick and easy to install
- Shallow system maximizes site suitability and reduces amount of sand fill required
- No venting and sand cover requirements

Plan View (not to scale)



Cross-Section View (not to scale)



NOTES:

1. Number and length of conduit rows per design.
2. Serial distribution shown, but system may be served by distribution box or manifold to provide parallel distribution.
3. Pumping is not required unless gravity flow cannot be achieved.

The Infiltrator ATL is a patent-pending, proprietary system consisting of six components. Upon entering the Infiltrator ATL septic tank effluent progresses through each component as follows:

- 4-inch-diameter pipe
- Large-diameter synthetic aggregate;
- Coarse geotextile;
- Small-diameter synthetic aggregate;
- Fine geotextile; and
- 6-inch depth of specified system sand.

Upon exiting the specified system sand, effluent is dispersed in the native soil.