

CASE STUDY

SaniTite® HP, Inserta Tee® Used for Sanitary Sewer Repair

Québec City, QC

OWNER

Québec City, QC

ENGINEER

Pluritec, Trois-Rivières, QC

CONTRACTOR

Charles-Auguste Fortier Inc., Québec City, QC

INSTALLATION DATE

September 2025

PRODUCTS

110 m (360') of 750 mm (30") SaniTite HP
10 Inserta Tee 150 mm into 750 mm (6" into 30")
SDR26/35

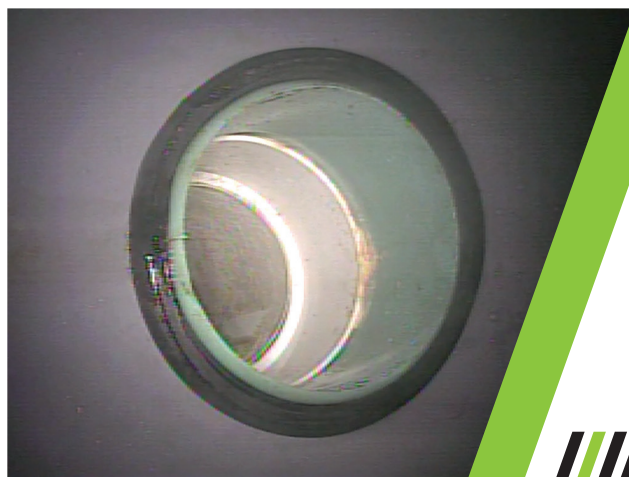
CHALLENGE

Quebec City initiated a project to replace aging reinforced concrete pipe (RCP) along a sanitary sewer line on Charles-Huot Avenue. In addition to rehabilitating the main line, the city needed to connect 10 residential properties to the new sewer line as part of the upgrade.

SOLUTION

Advanced Drainage Systems (ADS) convinced Quebec City officials that SaniTite HP polypropylene pipe would be a perfect, high-performance alternative to traditional reinforced concrete pipe (RCP). Although SaniTite HP had been approved for use in Quebec City since 2018, it had not yet been implemented on a municipal project.

The city agreed to move forward with SaniTite HP and Inserta Tee lateral connections as a pilot installation. This approach provided an opportunity for ADS representatives to show the



adspipe.ca

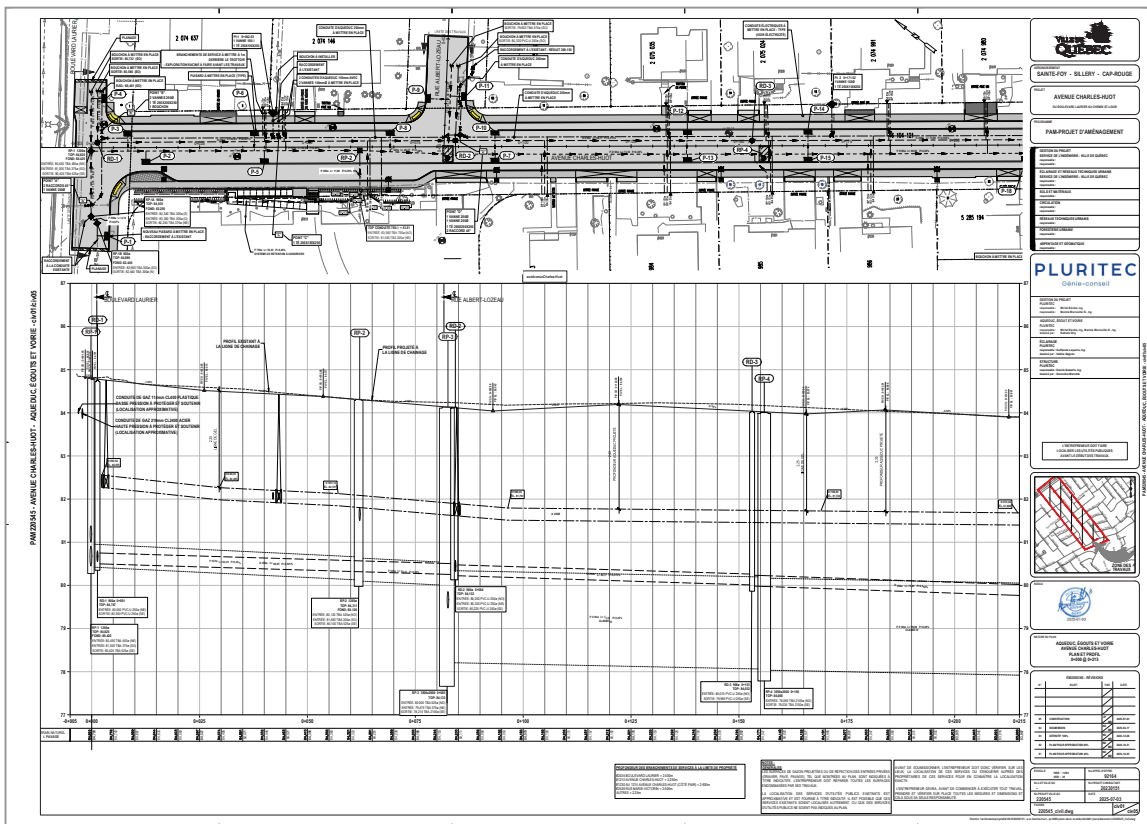
ADS

effectiveness of Inserta Tee connections for both sanitary and storm sewer service laterals. A total of 10 Inserta Tees were installed to connect residential properties along Charles-Huot Avenue to the main line. Following installation, the SaniTite HP pipe underwent deflection and watertightness testing, while the Inserta Tee connections were evaluated for watertightness and overall installation quality to ensure long-term performance.

PRODUCT DESCRIPTION

SaniTite HP couples advanced polypropylene resin technology with a proven 12”-30” (300-750 mm) dual wall and 30”-60” (750-1500 mm) triple wall profile design for superior performance and durability. SaniTite HP meets and exceeds typical standards for pipe stiffness and joint integrity. The bell and spigot joining system provides an added factor of safety for design engineers by including polymer-reinforced bells and double gasket spigots on every stick of pipe. The polypropylene pipe is an inert material that is chemically resistant to hydrogen sulfide gas and sulfuric acid concentrations typical of sanitary sewers.

Inserta Tee is a high-performance, easy-to-install lateral service connection. Inserta Tee consists of a PVC hub, rubber sleeve and stainless steel band. Inserta Tee’s watertight seal provides superior performance and is used to connect laterals to all known corrugated, solid wall, profile wall and concrete pipe, regardless of manufacturer.



adspipe.ca

