

SaniTite® HP Pipe



SaniTite HP Pipe 12”–60” for Sanitary Applications

Meets ASTM F2764

SaniTite HP (High Performance) couples advanced polypropylene resin technology with a proven 12”-30” (300-750 mm) dual wall and exclusive 30”-60” (750-1,500 mm) triple wall profile design for superior performance and durability. SaniTite HP meets and exceeds typical standards for pipe stiffness and joint integrity. When specifying pipe per ASTM F2764 on a gravity-flow sanitary sewer project, you are specifying the industry’s most stringent performance requirements.

Advanced Construction

- Standard 12”-60” (300-1500 mm) diameters
- Lengths available - 13’ (4.0 m) and 20’ (6.1 m)
- Redundant double gasketed joints
- Inert material
- Industry standards for manhole connections, testing and installation

Superior Polypropylene Material

Made from an engineered impact modified co-polymer compound, the superior strength and material properties of polypropylene offer robust pipe stiffness, excellent handling characteristics, and long service life when compared to traditional sanitary sewer products. It is chemically resistant to hydrogen sulfide gas and sulfuric acid concentrations typical of sanitary sewers to provide superior durability and performance. The unique light grey resin color provides superior UV resistance as well as improving the pipe’s interior visibility during post-installation inspection.

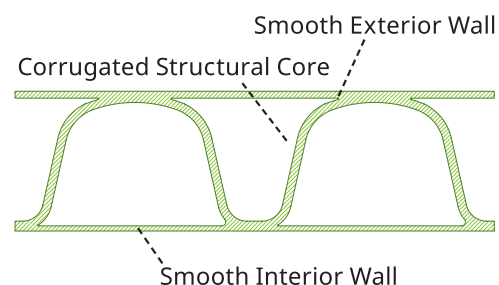
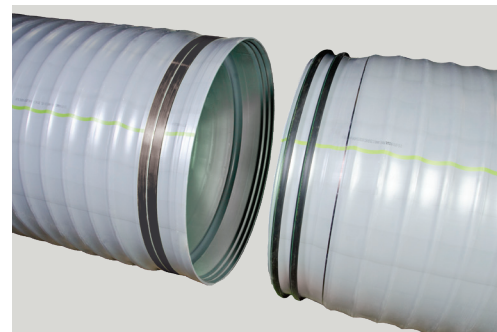
Superior Joint Performance

SaniTite HP pipe has an extended, reinforced bell with polymer composite bands and dual gaskets that add an additional factor of safety within each joint. The SaniTite HP joint performance exceeds the 10.8 psi (74.5 kPa) laboratory performance standards per ASTM D3212. SaniTite HP is tested to 15 psi (103.4 kPa) to provide additional redundancy and factor of safety for critical sanitary sewer installations. Third party certification of joint performance is available.

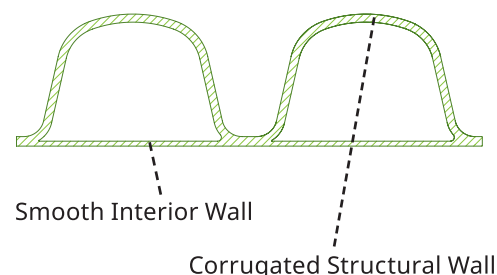
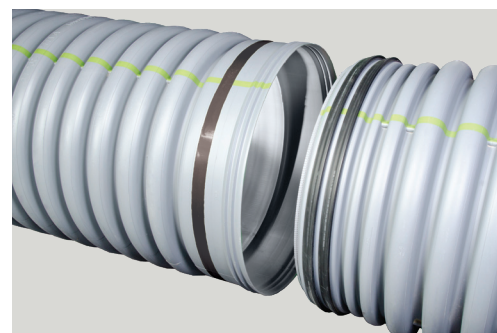
In the field, each section of SaniTite HP may be tested by a low pressure air test, according to ASTM F1417. ASTM F1417 is a commonly used standard for diameters 12”-36” (300 mm -900 mm) and specifies that 3.5 psi (24.1 kPa) air pressure be held for a specified length of time based upon pipe diameter and length of run. For diameters greater than 30” (750 mm) SaniTite HP joint integrity may be validated by a joint isolation test.

Where an infiltration/exfiltration test is preferred, ASTM F2487 specifies a simplistic method of verifying proper joint performance.

Triple Wall Design



Dual Wall Design

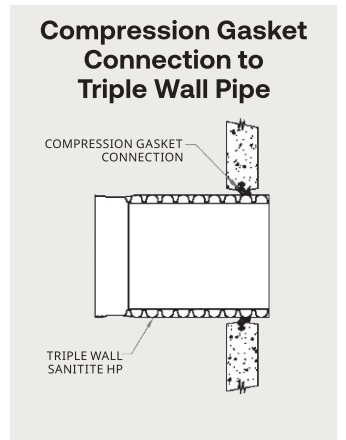
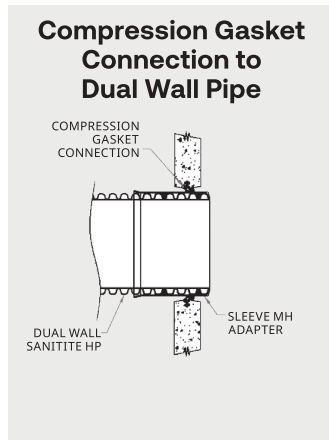
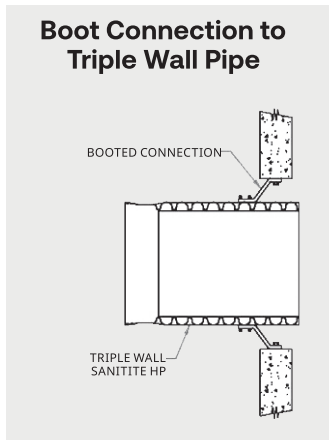
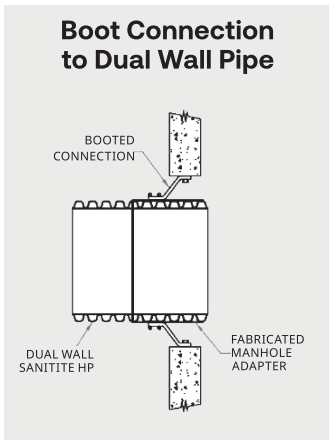


Standard Structure Connections

Sanitary sewer projects require superior watertight performance combined with a flexible connection solution that can withstand the rigor of installation. To meet varying regional requirements, ADS offers a wide selection of connectors to be used with independent standard resilient connectors meeting ASTM C923, such as A-Lok® and Press Seal®.

When connecting SaniTite HP pipe to a manhole, a smooth exterior surface on the pipe is required. ADS offers three ways to adapt dual wall pipe to these manhole connectors: a corrugated pipe adapter, a PVC Manhole Adapter or a polypropylene manhole sleeve adapter. For triple wall pipe, commonly used manhole connectors can connect directly to the pipe with no additional fittings or adapters.

Pipe at and around structure connections to be installed per ASTM D2321. Care should be taken to knife or shovel backfill material under and around haunch area of pipe.



SaniTite HP 12”–60” Sanitary Pipe Specification

Scope

This specification describes 12- through 60-inch (300 to 1500 mm) ADS SaniTite HP pipe for use in gravity-flow sanitary sewer applications.

Pipe Requirements

ADS 12” – 30” (300 to 750 mm) SaniTite HP dual wall pipe shall have a smooth interior and annular exterior corrugations; 30”-60” (750-1500 mm) SaniTite HP triplewall pipe shall have smooth interior and exterior surfaces with annular inner corrugations.

- 12- through 30-inch (300 to 750 mm) dual wall pipe shall meet ASTM F2764
- 30- through 60-inch (750-1500 mm) triple wall pipe shall meet ASTM F2764
- 12- through 60-inch (300 to 1500 mm) pipe shall have a minimum pipe stiffness of 46 pii when tested in accordance with ASTM D2412
- Manning’s “n” value for use in design shall be 0.012.

Joint Performance

Pipe shall be joined using a bell and spigot joint meeting the requirements of ASTM F2764. The joint shall be watertight according to the requirements of ASTM D3212, with the addition of a 15 psi pressure requirement. Gaskets shall meet the requirements of ASTM F477. Gaskets shall be installed by the pipe manufacturer and covered with a removable, protective wrap to ensure the gaskets are free from debris. A joint lubricant available from the manufacturer shall be used on the gasket and bell during assembly. 12- through 60-inch (300 to 1500 mm) diameters shall have a reinforced bell with a polymer composite band installed by the manufacturer.

Fittings

Fittings shall conform to ASTM F2764. Bell and spigot connections shall utilize a welded or integral bell and valley or inline gaskets meeting the watertight joint performance requirements of ASTM D3212.

Field Pipe and Joint Performance

To assure watertightness, field performance verification may be accomplished by testing in accordance with ASTM F1417 or ASTM F2487. Appropriate safety precautions must be used when field-testing any pipe material. Contact the manufacturer for recommended leakage rates.

Material Properties

Polypropylene compound for pipe and fitting production shall be an impact modified copolymer meeting the material requirements of ASTM F2764.

Installation

Installation shall be in accordance with ASTM D2321 and ADS recommended installation guidelines, with the exception that minimum cover in traffic areas for 12- through 48-inch (300 to 1200 mm) diameters shall be one foot (0.3 m) and for 60-inch (1500 mm) diameter the minimum cover shall be 2-ft (0.6 m) in single run applications. Backfill for minimum cover situations shall consist of Class 1 (compacted) or Class 2 (minimum 90% SPD) material. Maximum fill heights depend on embedment material and compaction level; please refer to Technical Note 2.05. Contact your local ADS representative or visit our website at www.adspipe.com for a copy of the latest installation guidelines.

Build America, Buy America (BABA)

ADS SaniTite HP pipe, manufactured in accordance with ASTM F2764, complies with the requirements in the Build America, Buy America (BABA) Act.

Pipe Dimensions

Nominal Diameter in (mm)	12 (300)	15 (375)	18 (450)	24 (600)	30 (750)	36 (900)	42 (1050)	48 (1200)	60 (1500)
Average Pipe I.D. in (mm)	12.1 (307)	14.9 (378)	18.0 (457)	24.1 (612)	30.1 (765)	35.7 (907)	41.8(1062)	47.3(1201)	59.3(1506)
Average Pipe O.D.* in (mm)	14.5 (368)	17.6 (447)	21.2 (538)	28.0 (711)	35.5 (902)	41.5 (1054)	47.4(1199)	54.1(1374)	67.1(1705)

* O.D. values listed above are NOT for manhole connector sizing. See ADS Standard Detail 205A-F for the recommended manhole connector based on product and diameter.



adspipe.com