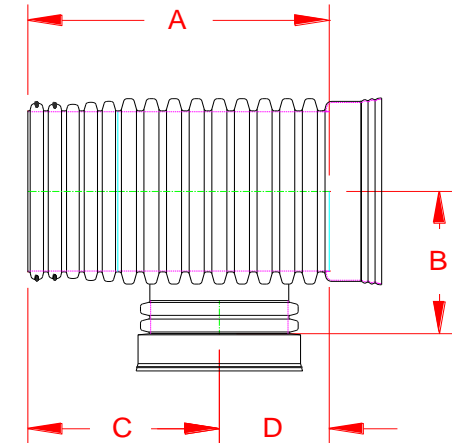


**HP STORM DUAL WALL FABRICATED REDUCING TEES  
42" X 12" - 60" X 24" DIAMETER (IB BELL\IB SPIGOT\BELL)**


PART #	PIPE SIZE	A	B	C	D	JOINT
4264AN65BP	42 x 12 in (1050 x 300 mm)	35.8 in (910 mm)	27.4 in (696 mm)	22.4 in (568 mm)	13.4 in (341 mm)	WT
4265AN65BP	42 x 15 in (1050 x 375 mm)	41.0 in (1040 mm)	28.9 in (734 mm)	24.9 in (633 mm)	16.0 in (407 mm)	WT
4266AN65BP	42 x 18 in (1050 x 450 mm)	46.1 in (1170 mm)	28.6 in (726 mm)	27.5 in (699 mm)	18.6 in (472 mm)	WT
4267AN65BP	42 x 24 in (1050 x 600 mm)	51.2 in (1301 mm)	30.1 in (765 mm)	30.1 in (764 mm)	21.2 in (537 mm)	WT
4864AN65BP	48 x 12 in (1200 x 300 mm)	36.8 in (935 mm)	30.4 in (772 mm)	23.7 in (602 mm)	13.1 in (332 mm)	WT
4865AN65BP	48 x 15 in (1200 x 375 mm)	42.0 in (1068 mm)	31.9 in (810 mm)	26.3 in (669 mm)	15.7 in (399 mm)	WT
4866AN65BP	48 x 18 in (1200 x 450 mm)	47.3 in (1200 mm)	31.6 in (803 mm)	29.0 in (736 mm)	18.3 in (465 mm)	WT
4867AN65BP	48 x 24 in (1200 x 600 mm)	52.5 in (1334 mm)	33.1 in (841 mm)	31.6 in (802 mm)	20.9 in (531 mm)	WT
6064AN65BP	60 x 12 in (1500 x 300 mm)	44.2 in (1122 mm)	36.8 in (935 mm)	29.2 in (741 mm)	15.0 in (381 mm)	WT
6065AN65BP	60 x 15 in (1500 x 375 mm)	44.2 in (1122 mm)	38.2 in (970 mm)	29.2 in (741 mm)	15.0 in (381 mm)	WT
6066AN65BP	60 x 18 in (1500 x 450 mm)	50.2 in (1274 mm)	37.9 in (963 mm)	32.2 in (817 mm)	18.0 in (457 mm)	WT
6067AN65BP	60 x 24 in (1500 x 600 mm)	56.2 in (1427 mm)	39.4 in (1001 mm)	35.2 in (894 mm)	21.0 in (533 mm)	WT



WT (INCLUDES 3 GASKETS)

NOTE: ALL FITTINGS DIMENSIONS ARE FOR REFERENCE ONLY

© 2021 Advanced Drainage Systems, Inc.

 Advanced Drainage Systems, Inc.	DRAWING #:	HP 11500
	DRAWN BY:	TJR 11/17/2009
	APPROVED BY:	
	REVISIONS:	TJR 5/13/2014