

# Water Management Product Catalog

---





# Table of Contents

## Product Applications

Matrix of applications for pipe products . . . . . 2-3

## Pipe

Pipe Descriptions & Specifications . . . . . 4  
 High Performance Storm & Sanitary . . . . . 5  
 Dual Wall . . . . . 6-8  
 HDPE Pipe  
 • N-12® Flex Pipe . . . . . 9  
 • ADS 3000® Triple Wall . . . . . 9  
 Single Wall HDPE  
 • Characteristics . . . . . 10  
 • Regular & Heavy Duty Pipe . . . . . 11-12  
 • Co-Ex . . . . . 12

## Fittings

• Dual Wall . . . . . 13-25  
 • Nyloplast® Fittings . . . . . 26-29  
 • Inserta Tee® . . . . . 30-32  
 • Inserta Tee Hole Saws . . . . . 33-34  
 • Single Wall . . . . . 35-38  
 • Hickenbottom® & Precision Intake . . . . . 39  
 • Specialty Fittings . . . . . 40

## Nyloplast®

• Drain Basins . . . . . 41  
 • Inline Drains . . . . . 42  
 • Inspection Ports . . . . . 43  
 • Curb Inlet Structures . . . . . 44  
 • Road & Highway Structures . . . . . 45  
 • Grates . . . . . 46  
 • Risers, Sump Inserts & Add-A-Branch . . . . . 47  
 • Weir Structures . . . . . 48

## Retention/Detention Systems

• Land Max® Manifolds . . . . . 49  
 • Manifold Bends . . . . . 50

• Land Max Accessories . . . . . 51-52  
 • StormTech® Chambers & End Caps . . . . . 53  
 • StormTech Bottom Inlets . . . . . 54  
 • StormTech Top Inlets . . . . . 55  
 • StormTech EZ End Caps . . . . . 55  
 • FLAMP . . . . . 55  
 • StormTech Bends . . . . . 56  
 • StormTech Manifolds . . . . . 57  
 • Aquabox . . . . . 58  
 • Water Harvesting . . . . . 58

## AdvanEdge®

### Stormwater Treatment

• BioFilters . . . . . 60  
 • Separators . . . . . 61  
 • Water Quality Units . . . . . 64  
 • FlexStorm® Inlet Filters . . . . . 62-64

### Linear Drains

• Duraslot® Slot Drain . . . . . 65-68  
 • Duraslot XL Trench Drain . . . . . 69-71

### Onsite Chambers

. . . . . 72-73

### Septic Stack™

. . . . . 73

### Waste Water Accessories



. . . . . 74

### Foundation Drainage & Accessories

. . . . . 75

### Geosynthetics

• Nonwovens . . . . . 76-77  
 • Wovens . . . . . 78  
 • Geogrids . . . . . 79  
 • Paving Fabrics . . . . . 79  
 • Silt Fence . . . . . 79  
 • Erosion Control Blankets . . . . . 80  
 • Turf Reinforcement Mats . . . . . 80  
 • Ground Protection Mats . . . . . 80  
 • Septic Fabrics . . . . . 81

 <b>RESALE ITEM</b>	<p>RESALE ITEMS – MARKED WITH </p> <p>– ARE PRODUCTS OFFERED FOR SALE          BUT NOT MANUFACTURED BY ADS.</p>
---	--

*METRIC AND IMPERIAL UNITS ARE PROVIDED ON PRODUCTS THROUGHOUT THE CATALOG. PRODUCTS SUBJECT TO CHANGE WITHOUT NOTICE. ALL SALES OF OUR PRODUCT ARE SUBJECT TO A LIMITED WARRANTY AND PURCHASERS ARE SOLELY RESPONSIBLE FOR INSTALLATION AND USE OF OUR PRODUCTS AND DETERMINING WHETHER A PRODUCT IS SUITED FOR ANY SPECIFIC NEEDS. PLEASE CONSULT A FULL COPY OF TERMS AND CONDITIONS FOR SALE FOR FURTHER DETAILS.*

# Product Applications

Product Type	Dual Wall					Triplewall	
	High-Density Polyethylene (HDPE)				Polypropylene		
	N-12® WT	N-12 ST	N-12 Plain End	Mega Green®	N-12 Flex Dual Wall	HP Storm	SaniTite® HP
<b>Construction products</b>							
Storm sewer	•	•	•	•		•	•
Retention/Detention	•	•	•	•		•	
Culverts/Cross drains	•	•	•	•		•	•
Slope/Edge drains	•	•	•	•		•	
Mining/Forestry/Industrial	•	•	•	•		•	
<b>Residential products</b>							
Foundations/Edge drains	•	•	•	•			
Downspouts/Roof drainage	•	•	•	•			
Culverts	•	•	•	•		•	
Sub-drainage							
On-site waste management							
<b>Recreation products</b>							
Paths/Walkways/Edge drains	•	•	•	•			
Sports playing fields	•	•	•	•		•	
Culverts	•	•	•	•			
Parking lot drainage	•	•	•	•		•	
Golf course drainage		•	•	•			
Landscape/Sub drainage							
<b>Agriculture Products</b>							
Field drainage					•		
Land reclamation	•	•	•	•	•		
Terracing	•	•	•	•	•		
Ditch Enclosures	•	•	•	•	•	•	
<b>Sanitary Sewer/Industrial Products</b>							
Sanitary Sewer Lines							•
Industrial waste							•

*Suggested products and applications are provided for general guidance only. Contact a sales representative to discuss the products acceptable for specific applications.*

# Product Applications

	Single Wall			Triple Wall
	High-Density Polyethylene (HDPE)			
Product Type	Regular	Heavy Duty	Co-Ex	ADS 3000 Triple Wall
<b>Construction products</b>				
Storm sewer				
Retention/Detention	•			
Culverts/Cross drains	•	•		
Slope/Edge drains	•	•		
Mining/Forestry/Industrial				
<b>Residential Products</b>				
Foundation/Edge drains		•		•
Downspouts/Roof drainage		•		•
Culverts	•	•		
Sub drainage		•		•
On-site waste management				•
<b>Recreation Products</b>				
Paths/Walkways/Edge drains		•		•
Sports playing fields	•	•		•
Culverts	•	•		
Parking lot drainage	•	•		
Golf course drainage	•	•		•
Landscape/Sub drainage	•	•		•
<b>Agriculture Products</b>				
Field drainage		•	•	
Land reclamation		•	•	
Waterways	•	•		
Terracing	•	•		
Ditch Enclosures	•	•		

# Pipe Descriptions, Specifications

## HP Storm, SaniTite HP & N-12 Dual Wall Pipe

### HP Storm (polypropylene)

Product	Description	Diameter	Connections	Specifications/Performance
HP Storm	Annular corrugations with smooth interior surface. Pipe is bell-and-spigot with the bell reinforced with a polymer wrap.	300-1500 mm (12-60) dual wall	Bell-and-spigot with a rubber gasket meeting ASTM D3212.	300-1500 mm (12-60) meets or exceeds CSA B182.12 and ASTM F2881.

### SaniTite HP (polypropylene)

Product	Description	Diameter	Connections	Specifications/Performance
SaniTite HP	Annular corrugations with smooth interior wall. 750-1500 mm (30-60) has smooth exterior surface. Pipe is bell-and-spigot. Bell reinforced with polymer wrap and spigot having two gaskets.	300-750 mm (12-30) dual wall 750-1500 mm (30-60) triple wall	Bell-and-spigot with two rubber gaskets meeting CSA B182.13 ASTM D3212.	300-1500 mm (12-60) meets CSA B182.13. 300-1500 mm (12-60) joints meet the requirements of CSA B182.13 and ASTM D3212.

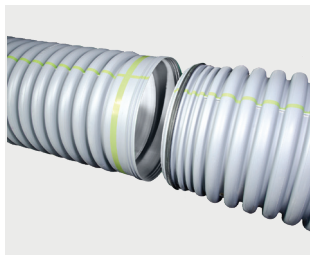
### N-12 (high-density polyethylene)

Product	Description	Diameter	Connections	Specifications/Performance
<b>N-12 Watertight (WT) IB</b>	Annular corrugations with smooth interior wall. Pipe is bell-and-spigot with a gasket for watertight connection.	100-1500 mm (4-60)	Bell-and-spigot with rubber gasket meeting CSA B182.8 or BNQ 3624-120.	100-1500 mm (4-10) meets CSA B182.8 or BNQ 3624-120. Joints meet the requirements of CSA B182.8 or BNQ 3624-120.
<b>N-12 Soil Tight (ST) IB</b>	Annular corrugations with smooth interior wall. Soil tight connection.	100-750 mm (4-30)	Bell-and-spigot with rubber gasket meeting CSA B182.8 or BNQ 3624-120.	100-750 mm (4-30) meets CSA B182.8, Type 2 or BNQ 3624-120.
<b>N-12 Plain End</b>	Annular corrugations with smooth interior wall.	300-900 mm (12-36)	External snap or split band couplers depending on diameter.	100-1500 mm (4-60) meets CSA B182.8, Type 3 or BNQ 3624-120.
<b>Mega Green Watertight (WT) IB</b>	Annular corrugations with smooth interior wall. Pipe is bell-and-spigot with a gasket for watertight connection.	300-1500 mm (12-60)	Bell-and-spigot with rubber gasket meeting CSA B182.8 or BNQ 3624-120.	100-1500mm (4 - 60) meets ASTM F2648. Joints meet the requirement of ASTM D3212.
<b>Mega Green Soil Tight (ST) IB</b>	Annular corrugations with smooth interior wall. Soil tight connection.	300-750 mm (12-30)	Bell-and-spigot with rubber gasket meeting CSA B182.8 or BNQ 3624-120.	100-750mm (4 - 30) meets ASTM F2648.
<b>N-12 Flex</b>	Annular corrugations with smooth interior wall. Soil tight connection.	200-375 mm (8-15)	External split couplers.	

# High-Performance Pipe

## HP Storm & SaniTite HP Pipe

### HP Storm per CSA B182.12

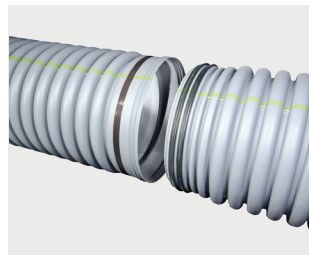


HP Storm

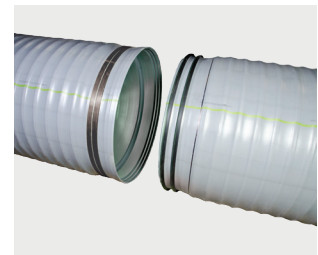
Diameter mm (in)	Length m (ft)	Product Code
300 (12)	4 (13)	12650013IBPL1
	6 (20)	12650020IBPL1
150 (15)	4 (13)	15650013IBPL1
	6 (20)	15650020IBPL1
450 (18)	4 (13)	18650013IBPL1
	6 (20)	18650020IBPL1
600 (24)	4 (13)	24650013IBPL1
	6 (20)	24650020IBPL1
750 (30)	4 (13)	30650013IBPL1
	6 (20)	30650020IBPL1
900 (36)	4 (13)	36650013IBPL1
	6 (20)	36650020IBPL1
1050 (42)	4 (13)	42650013IBPL1
	6 (20)	42650020IBPL1
1200 (48)	4 (13)	48650013IBPL1
	6 (20)	48650020IBPL1
1500 (60)	4 (13)	60650013IBPL1
	6 (20)	60650020IBPL1

\*Western Canada to purchase HP Storm PL2 items only. Contact your local sales representative for item level detail.

### SaniTite HP per CSA B182.13



Dual Wall SaniTite HP



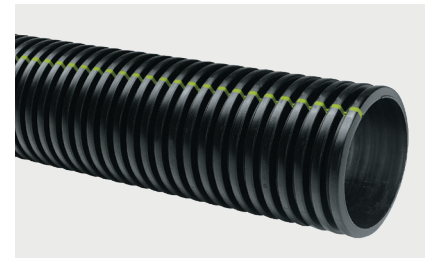
Triple Wall SaniTite HP

Diameter mm (in)	Length m (ft)	Style	Product Code
300 (12)	4 (13)	Dual wall	12300013IBPPEA
	6 (20)	Dual wall	12300020IBPPEA
150 (15)	4 (13)	Dual wall	15300013IBPPEA
	6 (20)	Dual wall	15300020IBPPEA
450 (18)	4 (13)	Dual wall	18300013IBPPEA
	6 (20)	Dual wall	18300020IBPPEA
525 (21)	4 (13)	Dual wall	21300013IBPPEA
	6 (20)	Dual wall	21300029IBPPEA
600 (24)	4 (13)	Dual wall	24300013IBPPEA
	6 (20)	Dual wall	24300020IBPPEA
750 (30)	6 (20)	Dual wall	30300020IBPPEA
	4 (13)	Triple wall	30300013IBHPEA
900 (36)	6 (20)	Triple wall	30300020IBHPEA
	4 (13)	Triple wall	36300013IBHPEA
1050 (42)	6 (20)	Triple wall	36300020IBHPEA
	4 (13)	Triple wall	42300013IBHPEA
1200 (48)	6 (20)	Triple wall	42300020IBHPEA
	4 (13)	Triple wall	48300013IBHPEA
1500 (60)	6 (20)	Triple wall	48300020IBHPEA
	4.9 (16.3)	Triple wall	60300016.3IBHPEA
	6 (20)	Triple wall	60300020IBHPEA

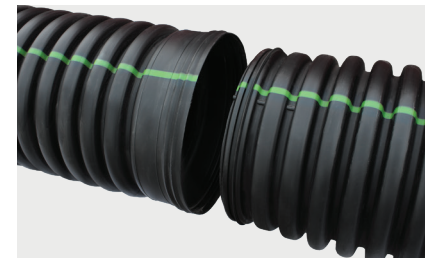
# Dual Wall HDPE Pipe

100-1500 mm N-12 Plain End, ST & WT per CSA B182.8 & BNQ 3624-120

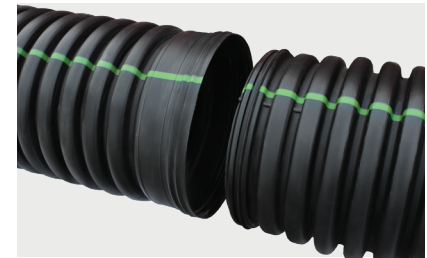
Diameter mm (in)	Length m (ft)	Style	N-12 Plain End	N-12 ST	N-12 WT
100 (4)	6 (20)	Solid			04650020IBEA
		Perf		04110020IBEA	04610020IBEA
		Sock		04230020IBEA	04630020IBEA
150 (6)	6 (20)	Solid			06650020IBEA
		Perf		06110020IBEA	06610020IBEA
		Sock		06230020IBEA	06630020IBEA
200 (8)	6 (20)	Solid			08650020IBEA
		Perf		08110020IBEA	08610020IBEA
		Sock		08230020IBEA	08630020IBEA
250 (10)	6 (20)	Solid			10650020IBEA
		Perf		10110020IBEA	10610020IBEA
		Sock		10230020IBEA	10630020IBEA
300 (12)	6 (20)	Solid	12950020EAR		12650020IBEAR
		Perf	12910020EAR	12810020IBEAR	
		Sock	12930020EAR	12830020IBEAR	
375 (15)	6 (20)	Solid	15950020EAR		15650020IBEAR
		Perf		15810020IBEAR	
		Sock	15930020EAR	15830020IBEAR	
450 (18)	6 (20)	Solid	18950020EAR		18650020IBEAR
		Perf		18810020IBEAR	
		Sock		18830020IBEAR	
525 (21)	6 (20)	Solid	21950020EAR		21650020IBEAR
		Perf		21810020IBEAR	
600 (24)	6 (20)	Solid	24950020EA(R)		24650020IBEA(R)
		Perf		24810020IBEA(R)	
		Sock		24830020IBEA(R)	
750 (30)	6 (20)	Solid	30950020EAR		30650020IBEAR
		Perf		30810020IBEAR	
900 (36)	6 (20)	Solid	36950019EA		36650020IBEA
		Perf			36610020IBEA
1050 (42)	6 (20)	Solid			42650020IBEA
		Perf			42610020IBEA
1200 (48)	6 (20)	Solid			48650020IBEA
		Perf			48610020IBEA
1500 (60)	6 (20)	Solid			60650020IBEA
		Perf			60610020IBEA



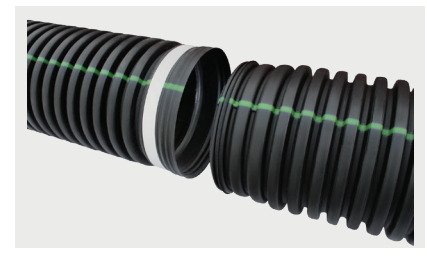
N-12 Plain End per CSA/BNQ



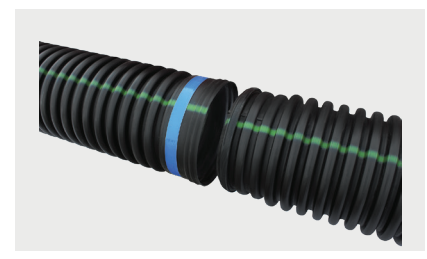
100-250 mm N-12 ST per CSA/BNQ



100-250 mm N-12 WT per CSA/BNQ



300-750 mm N-12 ST per CSA/BNQ

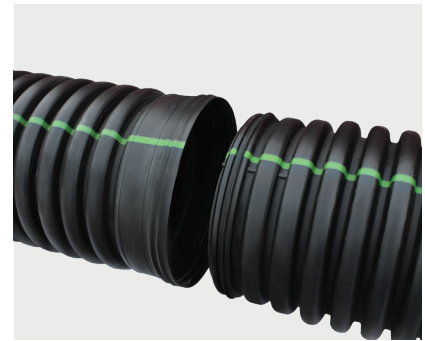


300-1500 mm N-12 WT per  
CSA/BNQ

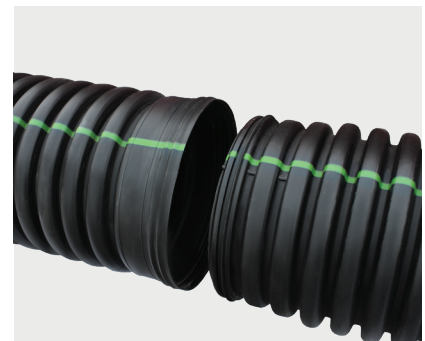
# Dual Wall HDPE Pipe

300-1500 mm N-12 ST & N-12 WT per ASTM F2648

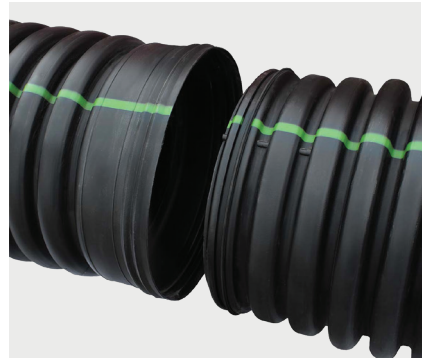
Diameter mm (in)	Length m (ft)	Style	N-12 ST	N-12 WT
300 (12)	6 (20)	Solid	12850020DW	12650020DW
		Perf	12810020DW	
		Sock	12830020DW	
375 (15)	6 (20)	Solid	15850020DW	15650020DW
		Perf	15810020DW	
		Sock	15830020DW	
450 (18)	6 (20)	Solid	18850020DW	18650020DW
		Perf	18810020DW	
		Sock	18830020DW	
600 (24)	6 (20)	Solid	24850020DW	24650020DW
		Perf	24810020DW	
		Sock	24830020DW	
750 (30)	6 (20)	Solid	30850020DW	30650020DW
		Perf	30810020DW	
		Sock	30830020DW	
900 (36)	6 (20)	Solid		36650020DW
		Perf		36610020DW
		Sock		36630020DW
1050 (42)	6 (20)	Solid		42650020DW
		Perf		42610020DW
1200 (48)	6 (20)	Solid		48650020DW
		Perf		48610020DW
1500 (60)	6 (20)	Solid		60650020DW
		Perf		60610020DW



100-250 mm N-12 ST per ASTM



100-250 mm N-12 WT per ASTM



300-750 mm N-12 ST per ASTM

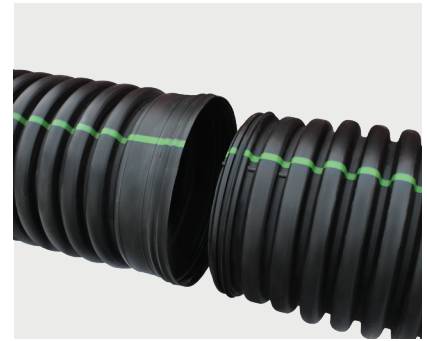


300-1500 mm N-12 WT per ASTM

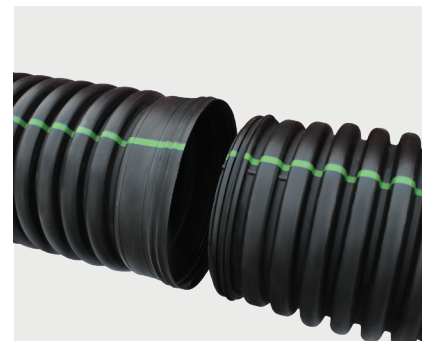
# Dual Wall HDPE Pipe

300-1500 mm N-12 Mega Green ST & WT per ASTM F2648

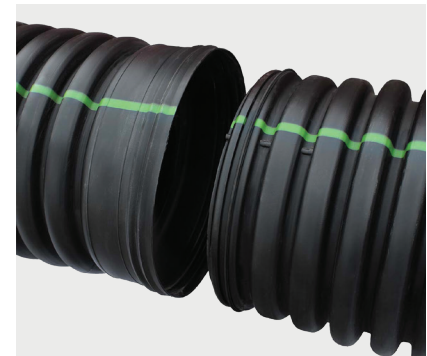
Diameter mm (in)	Length m (ft)	Style	N-12 ST	N-12 WT
300 (12)	6 (20)	Solid	12850020DW	12650020DW
		Perf	12810020DW	
		Sock	12830020DW	
375 (15)	6 (20)	Solid	15850020DW	15650020DW
		Perf	15810020DW	
		Sock	15830020DW	
450 (18)	6 (20)	Solid	18850020DW	18650020DW
		Perf	18810020DW	
		Sock	18830020DW	
600 (24)	6 (20)	Solid	24850020DW	24650020DW
		Perf	24810020DW	
		Sock	24830020DW	
750 (30)	6 (20)	Solid	30850020DW	30650020DW
		Perf	30810020DW	
		Sock	30830020DW	
900 (36)	6 (20)	Solid		36650020DW
		Perf		36610020DW
		Sock		36630020DW
1050 (42)	6 (20)	Solid		42650020DW
		Perf		42610020DW
1200 (48)	6 (20)	Solid		48650020DW
		Perf		48310020DW
1500 (60)	6 (20)	Solid		60650020DW
		Perf		60610020DW



100-250 mm N-12 ST per ASTM



100-250 mm N-12 WT per ASTM



300-750 mm N-12 ST per ASTM



300-1500 mm N-12 WT per ASTM

# HDPE Pipe

## N-12 Flex Dual Wall, Sewer & Drain Pipe

### N-12 Flex Dual Wall

Diameter mm (in)	Length m (ft)	Style	Product Code
200 (8)	280 (920)	Solid	08950920
	280 (920)	Perf	08910920
	280 (920)	Fine Slot	08890920
250 (10)	168 (550)	Solid	10950550
	168 (550)	Fine Slot	10890550
300 (12)	122 (400)	Solid	12950400I
	122 (400)	Perf	12910400I
	122 (400)	Fine Slot	12890400I
375 (15)	61 (200)	Solid	15950200I
	61 (200)	Perf	15910200I
	61 (200)	Fine Slot	15890200I



### ADS 3000 Triplewall® Pipe

Inside Diameter in (mm)	Standard Length m (ft)	Style	Product Code
75 (3)	3 (10)	Plain	03550010
		2-hole	03520010
100 (4)	3 (10)	Plain	04550010
		2-hole	04520010
		3-hole	04530010



# Single Wall HDPE Pipe

Product	Description	Diameter mm (in)	Length m (ft)	Connections	Specifications/ Performance mm (in)
<b>Heavy Duty Pipe</b>	Annular corrugated single wall.	100-375 (3-12)	15-1,143 (50-3,750) coils depending on pipe diameter. 6 (20) sticks depending on diameter.	Internal, external snap or split couplers.	Meets ASTM F667.
<b>Co-Ex</b>	Annular corrugated with white exterior and black interior.	100 (4)	1,082 (3,550)	Internal, external snap or split couplers.	Meets ASTM F667.

# Single Wall Pipe

100-250 mm Regular & Heavy Duty Single Wall

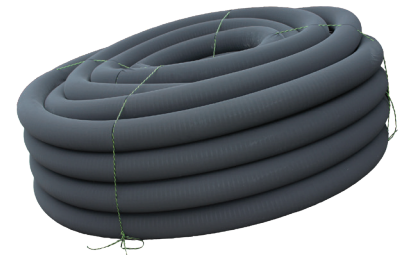
Inside Diameter mm (in)	Standard Length m (ft)	Style	Regular	Heavy Duty
100 (4)	15 (50)	Solid	04510050	
		Perf	04010050	
	30 (100)	Solid	04510100	04800100
		Perf	04010100	04810100
		Perf/Wrap	04730100BS	04830100BS
		Fine Slot		04090100
	45 (150)	Solid	04510150	
		Perf	04010150	
		Perf/Wrap	04730150BS	
	76 (250)	Solid		04800250
		Perf		04810250
		Perf/Wrap		04830250BS
		Fine Slot		04090250
		Perf		04813750
	1,143 (3,750)	Perf/Wrap		04833750BS
Fine Slot			04093750	
150 (6)	30 (100)	Solid		06800100
		Perf		06810100
		Perf/Wrap		06830100BS
	305 (1,000)	Solid		06801000
		Perf		06811000
		Perf/Wrap		06831000
		Fine Slot		06091000
	457 (1,500)	Solid		06801500
		Perf		06811500
		Perf/Wrap		06831500BS
	Fine Slot		06091500	
200 (8)	6 (20)	Solid		08800020
		Perf		08810020
		Perf/Wrap		08830020BS
		Fine Slot		08090020
	30 (100)	Solid		08800100
		Perf		08810100
		Perf/Wrap		08830100BS
	122 (400)	Solid		08800400
		Per		088100400
		Perf/Wrap		08830400BS
		Fine Slot		08090400
	250 (820)	Solid		08800820
		Perf		08810820
		Perf/Wrap		08830820BS
		Fine Slot		08090820
250 (10)	6 (20)	Solid		10800020I
		Perf		10810020I
	30 (100)	Solid		10800100I
		Perf		10810100I
		Perf/Wrap		10830100BSI
	160 (520)	Solid		10800520I
		Perf		10810520I
		Perf/Wrap		10830520BSI



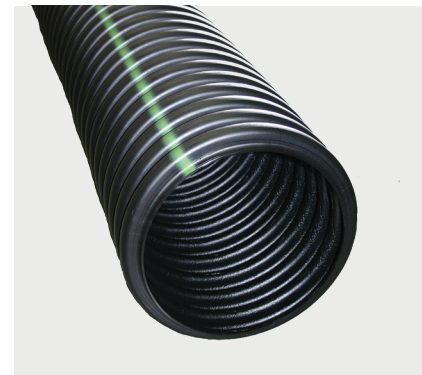
Solid wall coil



Perforated wall coil



Perforated with sock coil



Solid stick

# HDPE Pipe

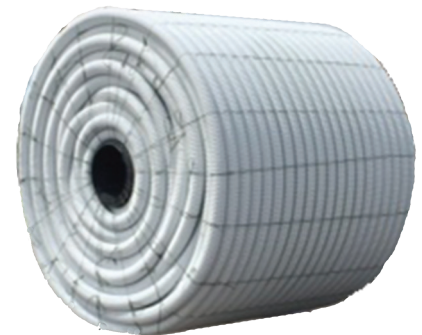
Regular & Heavy Duty Single Wall, Co-Ex & Tape

## 300 mm Regular & Heavy Duty Single Wall

Inside Diameter mm (in)	Standard Length m (ft)	Style	Regular	Heavy Duty
300 (12)	6 (20)	Solid	12510020I	
		Perf	12010020I	
	30 (100)	Solid	12510100I	
		Perf	12010100I	
		Perf/Wrap	12730100BSI	
	100 (330)	Solid	12510330I	
		Perf	12010330I	
		Perf/Wrap	12730330BSI	
		Fine Slot		12090330I

## 100-200 mm Co-Ex

Inside Diameter mm (in)	Standard Length m (ft)	Style	Product Code
100 (4)	1,082 (3,550)	Fine Slot	04083550



## Tape



Description	Lengths m (ft)	Product Code
50 mm (2) Black Tape Roll	30.5 (100)	1137KA
12.5 (½) Black Filament Tape	30.5 (100)	1147KA



# Dual Wall Fittings

## Couplers

### External Snap Coupler



Diameter mm (in)	Product Code
100 (4)	0412AA
150 (6)	0613AA
200 (8)	0813AA
250 (10)	1013AA

### Plain End Double Coupler



Diameter mm (in)	Product Code
250 (10)	1069AA
300 (12)	1269AA
375 (15)	1569AA
450 (18)	1869AA
600 (24)	2469AA
750 (30)	3069AA
900 (36)	3669AC

### Split Band Coupler



Diameter mm (in)	Product Code
250 (10)	1011AA
300 (12)	1265AA
375 (15)	1565AA
450 (18)	1865AA
600 (24)	2465AA
750 (30)	3065AA
900 (36)	3661AA
1050 (42)	4265AA
1200 (48)	4865AA
1500 (60)	6065AA

### Bell-Bell Coupler



Diameter mm (in)	Product Code	
	N-12 ST	N-12 WT
300 (12)	1215AA	1215AA
375 (15)	1515AA	1515AA
450 (18)	1815AA	1815AA
600 (24)	2415AA	2415AA
750 (30)	3013AN65	3013AN65
900 (36)	3613AN65	3613AN65
1050 (42)	4213AN65	4213AN65
1200 (48)	4813AN65	4813AN65
1500 (60)	6013AN65	6013AN65

# Dual Wall Fittings

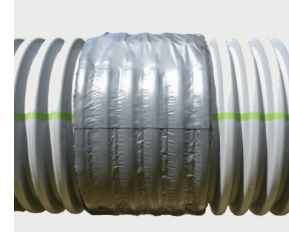
External Couplers & Internal Seals

## Mar Mac® Coupler



Diameter mm (in)	Product Code
200 (8)	0867RC
250 (10)	1067RC
300 (12)	1267RC
375 (15)	1567RC
450 (18)	1867RC
600 (24)	2467RC
750 (30)	3067RC
900 (36)	3667RC
1050 (42)	4267RC
1200 (48)	4867RC
1500 (60)	6067RC

## Mar Mac® Double Wide Coupler



Diameter mm (in)	Product Code
300 (12)	1267RCD
375 (15)	1567RCD
450 (18)	1867RCD
600 (24)	2467RCD
750 (30)	3067RCD
900 (36)	3667RCD
1050 (42)	4267RCD
1200 (48)	4867RCD
1500 (60)	6067RCD

## PVC Repair Sleeve\*



Diameter mm (in)	Product Code
100 (4)	0475AG
150 (6)	0675AG
200 (8)	0875AG
250 (10)	1075AG
300 (12)	1275AG
375 (15)	1575AG
450 (18)	1875AG
600 (24)	2475AG

\*Typically, two repair sleeves, gaskets, lube and a piece of pipe are needed for post-installation pipe repair.

NOTE: Contact your local sales representative for field repair of 750-1500 mm (30-60) diameter pipe and for availability of sizes not listed.

## NPC Internal Joint Seal



Diameter mm (in)	Width mm (in)	Product Code
450 (18)	266 (10.5)	1892NS
600 (24)	190 (7.5)	2491NS
	266 (10.5)	2492NS
750 (30)	190 (7.5)	3091NS
	266 (10.5)	3092NS
900 (36)	190 (7.5)	3691NS
	266 (10.5)	3692NS
1050 (42)	190 (7.5)	4291NS
	266 (10.5)	4292NS
1200 (48)	190 (7.5)	4891NS
	266 (10.5)	4892NS
1500 (60)	190 (7.5)	6091NS
	266 (10.5)	6092NS

# Dual Wall Fittings

End Caps, End Plugs & Lubricants

## End Caps\*



Diameter mm (in)	N-12 Plain End	N-12 WT Includes 1 gasket
300 (12)	1201AN	1201AN65B
375 (15)	1501AN	1501AN65B
450 (18)	1801AN	1801AN65B
600 (24)	2401AN	2401AN65B
750 (30)	3001AN	3001AN65B
900 (36)	3601AN	3601AN65B
1050 (42)	4201AN	4201AN65B
1200 (48)	4801AN	4801AN65B
1500 (60)	6001AN	6001AN65B

\*End caps are for horizontal pipe applications only.

## Non-Pressure Pipe End Plug with Gaskets\*



Diameter mm (in)	Product Code
200 (8)	0833AA
250 (10)	1033AA
300 (12)	1233AA
375 (15)	1533AA
450 (18)	1833AA
600 (24)	2433AA
750 (30)	3033AA
900 (36)	3633AA
1050 (42)	4233AA
1200 (48)	4833AA
1500 (60)	6033AA

## Snap End Caps\*\*



Diameter mm (in)	Product Code
150 (6)	0667AA
200 (8)	0867AA
250 (10)	1067AA

\*\* Not intended for permanent use or vertical orientation.  
NOTE: Contact your local sales representative for availability of sizes not listed above.

## N-12 Lubricants\*\*\*



Diameter mm (in)	Product Code 0200LU 1 quart (0.9 L)	Product Code 0800LU 1 gallon (3.8 L)
Typical Number of Joints Covered*		
100 (4)	89	356
150 (6)	61	244
200 (8)	43	172
250 (10)	33	132
300 (12)	25	100
375 (15)	20	80
450 (18)	16	64
600 (24)	10	40
750 (30)	9	36
900 (36)	7	28
1050 (42)	6	24
1200 (48)	6	24
1500 (60)	5	20

\*\*\*\* Based on joints with single gasket. Pipe with dual gaskets will require 75% more lube to cover the same number of joints.

# Dual Wall Fittings

## Fabricated Reducers

### Fabricated Reducers



**PLAIN END REDUCER**



**N-12 WT REDUCER**

Diameter mm (in)	N-12 Plain End	N-12 WT Includes 2 gaskets
200 x 100 (8 x 4)	0870AN	
200 x 150 (8 x 6)	0871AN	
250 x 100 (10 x 4)	1070AN	
250 x 150 (10 x 6)	1071AN	
250 x 200 (10 x 8)	1072AN	
300 x 100 (12 x 4)	1270AN	1270AN65B
300 x 150 (12 x 6)	1271AN	1271AN65B
300 x 200 (12 x 8)	1272AN	1272AN65B
375 x 250 (12 x 10)	1273AN	1273AN65B
375 x 100 (15 x 4)	1570AN	1570AN65B
375 x 150 (15 x 6)	1571AN	1571AN65B
375 x 200 (15 x 8)	1572AN	1572AN65B
375 x 250 (15 x 10)	1573AN	1573AN65B
375 x 300 (15 x 12)	1574AN	1574AN65B
450 x 100 (18 x 4)	1870AN	1870AN65B
450 x 150 (18 x 6)	1871AN	1871AN65B
450 x 200 (18 x 8)	1872AN	1872AN65B
450 x 250 (18 x 10)	1873AN	1873AN65B
450 x 300 (18 x 12)	1874AN	1874AN65B
450 x 375 (18 x 15)	1875AN	1875AN65B
600 x 100 (24 x 4)	2470AN	2470AN65B
600 x 150 (24 x 6)	2471AN	2471AN65B
600 x 200 (24 x 8)	2472AN	2472AN65B
600 x 250 (24 x 10)	2473AN	2473AN65B
600 x 300 (24 x 12)	2474AN	2474AN65B
600 x 375 (24 x 15)	2475AN	2474AN65B
600 x 450 (24 x 18)	2476AN	2476AN65B
750 x 100 (30 x 4)	3070AN	3070AN65B
750 x 150 (30 x 6)	3071AN	3071AN65B
750 x 200 (30 x 8)	3072AN	3072AN65B
750 x 250 (30 x 10)	3073AN	3073AN65B
750 x 300 (30 x 12)	3074AN	3074AN65B
750 x 375 (30 x 15)	3075AN	3075AN65B
750 x 450 (30 x 18)	3076AN	3076AN65B
750 x 600 (30 x 24)	3077AN	3077AN65B

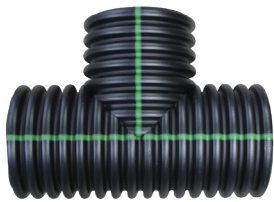
Diameter mm (in)	N-12 Plain End	N-12 WT Includes 2 gaskets
900 x 100 (36 x 4)	3670AN	3670AN65B
900 x 150 (36 x 6)	3671AN	3671AN65B
900 x 200 (36 x 8)	3672AN	3672AN65B
900 x 250 (36 x 10)	3673AN	3673AN65B
900 x 300 (36 x 12)	3674AN	3674AN65B
900 x 375 (36 x 15)	3675AN	3675AN65B
900 x 450 (36 x 18)	3676AN	3676AN65B
900 x 600 (36 x 24)	3677AN	3677AN65B
900 x 750 (36 x 30)	3678AN	3678AN65B
1050 x 150 (42 x 6)		4271AN65B
1050 x 200 (42 x 8)	4272AN	
1050 x 250 (42 x 10)	4273AN	
1050 x 300 (42 x 12)	4274AN	4274AN65B
1050 x 375 (42 x 15)	4275AN	4275AN65B
1050 x 450 (42 x 18)	4276AN	4276AN65B
1050 x 600 (42 x 24)	4277AN	4277AN65B
1050 x 750 (42 x 30)	4278AN	4278AN65B
1050 x 900 (42 x 36)	4279AN	4279AN65B
1200 x 300 (48 x 12)	4874AN	4874AN65B
1200 x 375 (48 x 15)	4875AN	4875AN65B
1200 x 450 (48 x 18)	4876AN	4876AN65B
1200 x 600 (48 x 24)	4877AN	4877AN65B
1200 x 750 (48 x 30)	4878AN	4878AN65B
1200 x 900 (48 x 36)	4879AN	4879AN65B
1200 x 1050 (48 x 42)	4842AN	4842AN65B
1500 x 600 (60 x 24)	6077AN	6077AN65B
1500 x 750 (60 x 30)	6078AN	6078AN65B
1500 x 900 (60 x 36)	6079AN	6079AN65B
1500 x 1050 (60 x 42)	6042AN	6042AN65B
1500 x 1200 (60 x 48)	6048AN	6048AN65B

NOTE: Contact your local sales representative for availability or sizes not listed above.

# Dual Wall Fittings

## Fabricated Tees & Reducing Tees

### Fabricated Tees



Plain End



N-12 WT

Diameter mm (in)	N-12 Plain End	N-12 WT Includes 3 gaskets
300 (12)	1264AN	1264AN65B
375 (15)	1565AN	1565AN65B
450 (18)	1866AN	1866AN65B
600 (24)	2467AN	2467AN65B
750 (30)	3068AN	3068AN65B
900 (36)	3669AN	3669AN65B
1050 (42)	4251AN	4251AN65B
1200 (48)	4851AN	4851AN65B
1500 (60)	6051AN	6051AN65B

### Cross Tees



Diameter mm (in)	N-12 Plain End
100 (4)	0430AN
150 (6)	0631AN
200 (8)	0832AN
250 (10)	1033AN
300 (12)	1234AN
375 (15)	1535AN
450 (18)	1836AN
600 (24)	2437AN

### Reducing Cross Tees



Diameter mm (in)	N-12 Plain End
150 x 100 (6 x 4)	0630AN
200 x 100 (8 x 4)	0830AN
200 x 150 (8 x 6)	0831AN
250 x 100 (10 x 4)	1030AN
250 x 150 (10 x 6)	1031AN
250 x 200 (10 x 8)	1032AN
300 x 100 (12 x 4)	1230AN
300 x 150 (12 x 6)	1231AN
300 x 200 (12 x 8)	1232AN
375 x 250 (12 x 10)	1233AN

### Reducing Tap Tees



Diameter mm (in)	N-12 WT Includes 2 gasket
150 x 100 (6 x 4)	0660AN65BS
200 x 100 (8 x 4)	0860AN65BS
250 x 150 (10 x 6)	1061AN65BS
300 x 100 (12 x 4)	1260AN65BS
300 x 150 (12 x 6)	1261AN65BS
450 x 100 (18 x 4)	1860AN65BS

# Dual Wall Fittings

## Fabricated Reducing Tees

### Fabricated Reducing Tees



Diameter mm (in)	N-12 Plain End	N-12 WT Includes 2 main and 1 stub gaskets
300 x 100 (12 x 4)	1260AN	
300 x 150 (12 x 6)	1261AN	
375 x 100 (15 x 4)	1560AN	1560AN65B
375 x 150 (15 x 6)	1561AN	1561AN65B
375 x 200 (15 x 8)	1562AN	1562AN65B
375 x 250 (15 x 10)	1563AN	1563AN65B
375 x 300 (15 x 12)	1564AN	1564AN65B
450 x 100 (18 x 4)	1860AN	1860AN65B
450 x 150 (18 x 6)	1861AN	1861AN65B
450 x 200 (18 x 8)	1862AN	1862AN65B
450 x 250 (18 x 10)	1863AN	1863AN65B
450 x 300 (18 x 12)	1864AN	1864AN65B
450 x 375 (18 x 15)	1865AN	1865AN65B
600 x 100 (24 x 4)	2460AN	2460AN65B
600 x 150 (24 x 6)	2461AN	2461AN65B
600 x 200 (24 x 8)	2462AN	2462AN65B
600 x 250 (24 x 10)	2463AN	2463AN65B
600 x 300 (24 x 12)	2464AN	2464AN65B
600 x 375 (24 x 15)	2465AN	2465AN65B
600 x 450 (24 x 18)	2466AN	2466AN65B
750 x 100 (30 x 4)	3060AN	3060AN65B
750 x 150 (30 x 6)	3061AN	3061AN65B
750 x 200 (30 x 8)	3062AN	3062AN65B
750 x 250 (30 x 10)	3063AN	3063AN65B
750 x 300 (30 x 12)	3064AN	3064AN65B
750 x 375 (30 x 15)	3065AN	3065AN65B
750 x 450 (30 x 18)	3066AN	3066AN65B
750 x 600 (30 x 24)	3067AN	3067AN65B
900 x 100 (36 x 4)	3660AN	3660AN65B
900 x 150 (36 x 6)	3661AN	3661AN65B
900 x 200 (36 x 8)	3662AN	3662AN65B
900 x 250 (36 x 10)	3663AN	3663AN65B

Diameter mm (in)	N-12 Plain End	N-12 WT Includes 2 main and 1 stub gaskets
900 x 300 (36 x 12)	3664AN	3664AN65B
900 x 375 (36 x 15)	3665AN	3665AN65B
900 x 450 (36 x 18)	3666AN	3666AN65B
900 x 600 (36 x 24)	3667AN	3667AN65B
900 x 750 (36 x 30)	3668AN	3668AN65B
1050 x 150 (42 x 6)	4261AN	
1050 x 200 (42 x 8)	4262AN	4262AN65B
1050 x 250 (42 x 10)	4263AN	4263AN65B
1050 x 300 (42 x 12)	4264AN	4264AN65B
1050 x 375 (42 x 15)	4265AN	4265AN65B
1050 x 450 (42 x 18)	4266AN	4266AN65B
1050 x 600 (42 x 24)	4267AN	4267AN65B
1050 x 750 (42 x 30)	4268AN	4268AN65B
1050 x 900 (42 x 36)	4269AN	4269AN65B
1200 x 150 (48 x 6)	4861AN	4861AN65B
1200 x 200 (48 x 8)	4862AN	4862AN65B
1200 x 250 (48 x 10)	4863AN	4863AN65B
1200 x 300 (48 x 12)	4864AN	4864AN65B
1200 x 375 (48 x 15)	4865AN	4865AN65B
1200 x 450 (48 x 18)	4866AN	4866AN65B
1200 x 600 (48 x 24)	4867AN	4867AN65B
1200 x 750 (48 x 30)	4868AN	4868AN65B
1200 x 900 (48 x 36)	4869AN	4869AN65B
1200 x 1050 (48 x 42)	4840AN	4840AN65B
1500 x 300 (60 x 12)	6064AN	6064AN65B
1500 x 375 (60 x 15)	6065AN	6065AN65B
1500 x 450 (60 x 18)	6066AN	6066AN65B
1500 x 600 (60 x 24)	6067AN	6067AN65B
1500 x 750 (60 x 30)	6068AN	6068AN65B
1500 x 900 (60 x 36)	6069AN	6069AN65B
1500 x 1050 (60 x 42)	6040AN	6040AN65B
1500 x 1200 (60 x 48)	6041AN	6041AN65B

# Dual Wall Fittings

## Fabricated Bends

### 11.25° Bend



Diameter mm (in)	N-12 Plain End	N-12 WT includes 2 gaskets
100 (4)	0491AN	
150 (6)	0691AN	
200 (8)	0891AN	
250 (10)	1091AN	
300 (12)	1291AN	1291AN65B
375 (15)	1591AN	1591AN65B
450 (18)	1891AN	1891AN65B
600 (24)	2491AN	2491AN65B
750 (30)	3091AN	3091AN65B
900 (36)	3691AN	3691AN65B
1050 (42)	4291AN	4291AN65B
1200 (48)	4891AN	4891AN65B
1500 (60)	6091AN	6091AN65B

### 30° Bend



Diameter mm (in)	N-12 Plain End	N-12 WT includes 2 gaskets
100 (4)	0495AN	
150 (6)	0695AN	
200 (8)	0895AN	
250 (10)	1095AN	
300 (12)	1295AN	1295AN65B
375 (15)	1595AN	1595AN65B
450 (18)	1895AN	1895AN65B
600 (24)	2495AN	2495AN65B
750 (30)	3095AN	3095AN65B
900 (36)	3695AN	3695AN65B
1050 (42)	4295AN	4295AN65B
1200 (48)	4895AN	4895AN65B
1500 (60)	6095AN	6095AN65B

### 22.5° Bend



Diameter mm (in)	N-12 Plain End	N-12 WT includes 2 gaskets
100 (4)	0492AN	
150 (6)	0692AN	
200 (8)	0892AN	
250 (10)	1092AN	
300 (12)	1292AN	1292AN65B
375 (15)	1592AN	1592AN65B
450 (18)	1892AN	1892AN65B
600 (24)	2492AN	2492AN65B
750 (30)	3092AN	3092AN65B
900 (36)	3692AN	3692AN65B
1050 (42)	4292AN	4292AN65B
1200 (48)	4892AN	4892AN65B
1500 (60)	6092AN	6092AN65B

### 45° Bend



Diameter mm (in)	N-12 Plain End	N-12 WT includes 2 gaskets
300 (12)	1297AN	1297AN65BB
375 (15)	1597AN	1597AN65BB
450 (18)	1897AN	1897AN65BB
600 (24)	2497AN	2497AN65BB
750 (30)	3097AN	3097AN65BB
900 (36)	3697AN	3697AN65BB
1050 (42)	4297AN	4297AN65BB
1200 (48)	4897AN	4897AN65BB
1500 (60)	6097AN	6097AN65BB

# Dual Wall Fittings

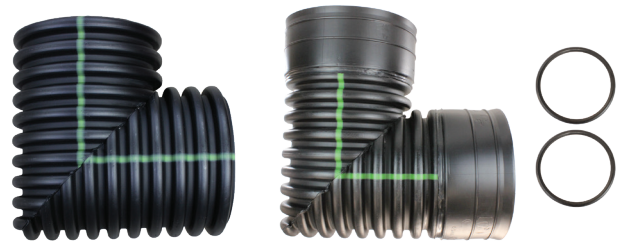
## Fabricated Bends

### 45° Mitered Bend



Diameter mm (in)	N-12 Plain End	N-12 WT includes 2 gaskets
300 (12)	1294AN	1294AN65B
375 (15)	1594AN	1594AN65B
450 (18)	1894AN	1894AN65B
600 (24)	2494AN	2494AN65B
750 (30)	3094AN	3094AN65B
900 (36)	3694AN	3694AN65B
1050 (42)	4294AN	4294AN65B
1200 (48)	4894AN	4894AN65B
1500 (60)	6094AN	6094AN65B

### 90° Bend

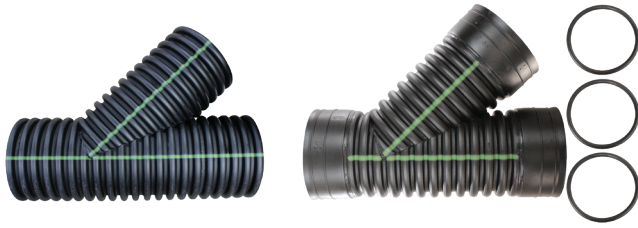


Diameter mm (in)	N-12 Plain End	N-12 WT includes 2 gaskets
100 (4)	0499AN	
150 (6)	0699AN	
200 (8)	0899AN	
250 (10)	1099AN	
300 (12)	1299AN	1299AN65B
375 (15)	1599AN	1599AN65B
450 (18)	1899AN	1899AN65B
600 (24)		2499AN65B

# Dual Wall Fittings

*Fabricated 45° Wyes*

## Fabricated 45° Wye



Diameter mm (in)	N-12 Plain End	N-12 WT Includes 3 gaskets
300 (12)	1284AN	1284AN65B
375 (15)	1585AN	1585AN65B
450 (18)	1886AN	1886AN65B
600 (24)	2487AN	2487AN65B

## Fabricated Reducing 45° Wye



Diameter mm (in)	N-12 Plain End	N-12 WT Includes 2 main and 1 stub gaskets
250 x 100 (10 x 4)	1080AN	
250 x 150 (10 x 6)	1081AN	
250 x 200 (10 x 8)	1082AN	
300 x 100 (12 x 4)	1280AN	1280AN65B
300 x 150 (12 x 6)	1281AN	1281AN65B
300 x 200 (12 x 8)	1282AN	1282AN65B
300 x 250 (12 x 10)	1283AN	1283AN65B
375 x 100 (15 x 4)	1580AN	1580AN65B
375 x 150 (15 x 6)	1581AN	1581AN65B
375 x 200 (15 x 8)	1582AN	1582AN65B
375 x 250 (15 x 10)	1583AN	1583AN65B
375 x 300 (15 x 12)	1584AN	1584AN65B
450 x 100 (18 x 4)	1880AN	1880AN65B
450 x 150 (18 x 6)	1881AN	1881AN65B
450 x 200 (18 x 8)	1882AN	1882AN65B
450 x 250 (18 x 10)	1883AN	1883AN65B
450 x 300 (18 x 12)	1884AN	1884AN65B
450 x 375 (18 x 15)	1885AN	1885AN65B

Diameter mm (in)	N-12 Plain End	N-12 WT Includes 2 main and 1 stub gaskets
600 x 100 (24 x 4)	2480AN	2480AN65B
600 x 150 (24 x 6)	2481AN	2481AN65B
600 x 200 (24 x 8)	2482AN	2482AN65B
600 x 250 (24 x 10)	2483AN	2483AN65B
600 x 300 (24 x 12)	2484AN	2484AN65B
600 x 375 (24 x 15)	2485AN	2485AN65B
600 x 450 (24 x 18)	2486AN	2486AN65B
750 x 100 (30 x 4)	3080AN	3080AN65B
750 x 150 (30 x 6)	3081AN	3081AN65B
750 x 200 (30 x 8)	3082AN	3082AN65B
750 x 250 (30 x 10)	3083AN	3083AN65B
750 x 300 (30 x 12)	3084AN	3084AN65B
750 x 375 (30 x 15)	3085AN	3085AN65B
900 x 100 (36 x 4)		3680AN65B
900 x 150 (36 x 6)	3681AN	3681AN65B
900 x 200 (36 x 8)	3682AN	3682AN65B
900 x 250 (36 x 10)	3683AN	3683AN65B
900 x 300 (36 x 12)	3684AN	3684AN65B
900 x 375 (36 x 15)	3685AN	3685AN65B
900 x 450 (36 x 18)	3686AN	3686AN65B
1050 x 150 (42 x 6)		4281AN65B
1050 x 200 (42 x 8)	4282AN	4282AN65B
1050 x 250 (42 x 10)		4283AN65B
1050 x 300 (42 x 12)	4284AN	4284AN65B
1050 x 375 (42 x 15)		4285AN65B
1050 x 450 (42 x 18)	4286AN	4286AN65B
1200 x 150 (48 x 6)	4881AN	4881AN65B
1200 x 200 (48 x 8)	4882AN	4882AN65B
1200 x 250 (48 x 10)		4883AN65B
1200 x 300 (48 x 12)	4884AN	4884AN65B
1200 x 375 (48 x 15)	4885AN	4885AN65B
1200 x 450 (48 x 18)	4886AN	4886AN65B
1200 x 600 (48 x 24)	4887AN	4887AN65B
1500 x 200 (60 x 8)		6082AN65B
1500 x 250 (60 x 10)		6083AN65B
1500 x 300 (60 x 12)	6084AN	6084AN65B
1500 x 375 (60 x 15)	6085AN	6085AN65B
1500 x 450 (60 x 18)	6086AN	6086AN65B

NOTE: Contact your local sales representative for availability or sizes not listed above.

# Dual Wall Injection Molded Fittings

## Soil-Tight Fittings (Cleated Bells)

### Bell/Bell Tee



Diameter mm (in)	Package Qty.	Product Code
100 (4)	5	0460ST
150 (6)	3	0661ST
200 (8)	1	0862ST
250 (10)	1	1063ST
300 (12)	1	1264ST

### Bell/Bell 45° Wye



Diameter mm (in)	Package Qty.	Product Code
100 (4)	5	0480ST
150 (6)	2	0681ST
200 (8)	1	0882ST
250 (10)	1	1083ST
300 (12)	1	1284ST

### Reducing Tee



Diameter mm (in)	Package Qty.	Product Code
150 x 100 (6 x 4)	5	0660ST
250 x 200 (10 x 8)	1	1062ST
300 x 200 (12 x 8)	1	1262ST

### 45° Reducing Wye



Diameter mm (in)	Package Qty.	Product Code
150 x 100 (6 x 4)	2	0680ST
200 x 100 (8 x 4)	1	0880ST
200 x 150 (8 x 6)	1	0881ST
250 x 200 (10 x 8)	1	1082ST

### Sweeping Tee



Diameter mm (in)	Package Qty.	Product Code
200 x 100 (8 x 4)	1	0863ST
200 x 150 (8 x 6)	1	0836ST
250 x 150 (10 x 6)	1	1036ST

### Bell/Bell 90° Elbow



Diameter mm (in)	Package Qty.	Product Code
100 (4)	10	0499ST
150 (6)	5	0699ST
200 (8)	3	0899ST
250 (10)	1	1099ST
300 (12)	1	1299ST

### Bell/Bell 45° Elbow



Diameter mm (in)	Package Qty.	Product Code
100 (4)	15	0494ST
150 (6)	6	0694ST
200 (8)	3	0894ST
250 (10)	1	1094ST
300 (12)	1	1294ST

# Dual Wall Injection Molded Fittings

Watertight Fittings (includes F477 gaskets for attachment on pipe end)

## Bell/Bell Tee



Diameter mm (in)	Package Qty.	Product Code
100 (4)	5	0460WT
150 (6)	3	0661WT
200 (8)	1	0862WT
250 (10)	1	1063WT
300 (12)	1	1264WT

## Bell/Bell 45° Wye



Diameter mm (in)	Package Qty.	Product Code
100 (4)	5	0480WT
150 (6)	2	0681WT
200 (8)	1	0882WT
250 (10)	1	1083WT
300 (12)	1	1284WT

## Reducing Tee



Diameter mm (in)	Package Qty.	Product Code
150 x 100 (6 x 4)	5	0660WT
250 x 200 (10 x 8)	1	1062WT
300 x 200 (12 x 8)	1	1262WT

## Reducing 45° Wye



Diameter mm (in)	Package Qty.	Product Code
150 x 100 (6 x 4)	2	0680WT
200 x 100 (8 x 4)	1	0880WT
200 x 150 (8 x 6)	1	0881WT
250 x 200 (10 x 8)	1	1082WT
300 x 150 (12 x 6)	1	1281WT
300 x 200 (12 x 8)	1	1282WT

## Sweeping Tee



Diameter mm (in)	Package Qty.	Product Code
200 x 100 (8 x 4)	1	0863WT
200 x 150 (8 x 6)	1	0836WT
250 x 150 (10 x 6)	1	1036WT
300 x 150 (12 x 6)	1	1236WT

## End Cap



Diameter mm (in)	Package Qty.	Product Code
100 (4)	12	0432WT
150 (6)	1	0632WT

# Dual Wall Injection Molded Fittings

Watertight Fittings (includes F477 gaskets for attachment on pipe end)

## Bell/Bell 45° Elbow



Diameter mm (in)	Package Qty.	Product Code
100 (4)	15	0494WT
150 (6)	6	0694WT
200 (8)	3	0894WT
250 (10)	1	1094WT
300 (12)	1	1294WT

## Bell/Bell Coupler



Diameter mm (in)	Package Qty.	Product Code
100 (4)	40	0413WT
150 (6)	10	0613WT
200 (8)	5	0813WT
250 (10)	5	1013WT

## Bell/Bell 90° Elbow



Diameter mm (in)	Package Qty.	Product Code
100 (4)	15	0499WT
150 (6)	5	0699WT
200 (8)	3	0899WT
250 (10)	1	1099WT
300 (12)	1	1299WT

## Bell/Bell Reducing Coupler



Diameter mm (in)	Package Qty.	Product Code
150 x 100 (6 x 4)	10	0614WT
200 x 100 (8 x 4)	10	0814WT
200 x 150 (8 x 6)	5	0816WT
250 x 200 (10 x 8)	1	1018WT
300 x 200 (12 x 8)	1	1218WT
300 x 250 (12 x 10)	1	1210WT

## Bell/Spigot Reducing Coupler



Diameter mm (in)	Package Qty.	Product Code
150 x 100 (6 x 4)	10	0674WT
200 x 100 (8 x 4)	10	0874WT
200 x 150 (8 x 6)	8	0876WT

# Dual Wall Injection Molded Fittings

## ST & WT Reducing Fitting Kits

### Soil Tight Tee

Diameter mm (in)	Tee	Consists of Reducer	N-12 ST bell & spigot
250 x 100 (10 x 4)	1062ST (10 x 8) + 0874WT (8 x 4)		1060ST
300 x 250 (12 x 10)	1264ST (12)	+ 1210WT (12 x 10)	1263ST <sup>1,2</sup>



### Watertight Tee

Diameter mm (in)	Tee	Consists of Reducer	N-12 WT bell & spigot
200 x 150 (8 x 6)	0862WT (8) + 0876WT (8 x 6)		0861WT
250 x 100 (10 x 4)	1062WT (10 x 8) + 0874WT (8 x 4)		1060WT
300 x 100 (12 x 4)	1264WT (12) + 0874WT (8 x 4)		1260WT
300 x 250 (12 x 10)	1264WT (12)	+ 1210WT (12 x 10)	1263WT <sup>1,2</sup>



### Soil Tight Wye

Diameter mm (in)	Tee	Consists of Reducer	N-12 ST bell & spigot
300 x 250 (12 x 10)	1284 ST (12)	+ 1210WT (12 x 10)	1283ST <sup>3</sup>



### Watertight Wye

Diameter mm (in)	Tee	Consists of Reducer	N-12 WT bell & spigot
250 x 100 (10 x 4)	1082WT (10 x 8) + 0874WT (8 x 4)		1080WT
250 x 150 (10 x 6)	1082WT (10 x 8) + 0876WT (8 x 6)		1081WT
300 x 100 (12 x 4)	1282WT (12 x 8) + 0874WT (8 x 4)		1280WT
300 x 250 (12 x 10)	1284WT (12)	+ 1210WT (12 x 10)	1283WT <sup>3</sup>



### Watertight Reducer

Diameter mm (in)	Tee	Consists of Reducer	N-12 WT bell & spigot
250 x 100 (10 x 4)	1018WT (10 x 8) + 0874WT (8 x 4)		1074WT
250 x 150 (10 x 6)	1018WT (10 x 8) + 0876WT (8 x 6)		1076WT
300 x 100 (12 x 4)	1218WT (12 x 8) + 0874WT (8 x 4)		1274WT
300 x 150 (12 x 6)	1218WT (12 x 8) + 0876WT (8 x 6)		1276WT



1. Additional pipe stub not shipped with item number. Order this pipe separately.
2. 300 x 250 mm (12 x 10) Tee: order 1264 (WT or ST) 300 x 300 mm (12 x 12) Tee, 1210WT 300 x 250 mm (12 x 10) Bell/Bell Reducer, and approximately 375 mm (15) of 300 mm (12\_ diameter dual wall pipe to make the connection between the two bell ends.
3. 300 x 250 mm (12 x 10) Wye: order 1284 (WT or ST) 300 x 300 mm (12 x 12) Wye, 1210WT 300 x 250 mm (12 x 10) Bell/Bell Reducer, and approximately 375 mm (15) of 300 mm (12) diameter dual wall pipe to make the connection between the two bell ends.

# Nyloplast PVC Fittings

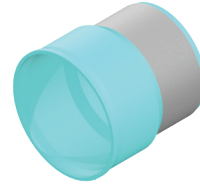
*Watertight Fittings*

## SWR Spigot Adapter



Diameter mm (in)	Product Code
100 (4)	0468AG
150 (6)	0668AG
200 (8)	0868AG
250 (10)	1068AG
300 (12)	1268AG
375 (15)	1568AG
450 (18)	1868AG
600 (24)	2468AG

## Sanded Manhole Adapters



Diameter mm (in)	Product Code
100 (4)	0477AG
150 (6)	0677AG
200 (8)	0877AG
250 (10)	1077AG
300 (12)	1277AG
375 (15)	1577AG
450 (18)	1877AG
600 (24)	2477AG

## SWR Bell Adapter



Diameter mm (in)	Product Code
100 (4)	0469AG
150 (6)	0669AG
200 (8)	0869AG
250 (10)	1069AG
300 (12)	1269AG
375 (15)	1569AG
450 (18)	1869AG
600 (24)	2469AG

## Unsanded Manhole Adapters



Diameter mm (in)	Product Code
150 (6)	0677AGU
200 (8)	0877AGU
250 (10)	1077AGU
300 (12)	1277AGU
375 (15)	1577AGU
450 (18)	1877AGU
600 (24)	2477AGU

## Adapter with Sch 40 Spigot



Diameter mm (in)	Product Code
100 (4)	0478AG
150 (6)	0678AG
200 (8)	0878AG
250 (10)	1078AG
300 (12)	1278AG

## Adapter with Sch 40 Bell

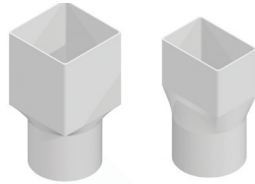


Diameter mm (in)	Product Code
100 (4)	0479AG
150 (6)	0679AG
200 (8)	0879AG
250 (10)	1079AG
300 (12)	1279AG

# Nyloplast PVC Fittings

## Watertight Fittings

### Downspout Adapter



Diameter mm (in)	Product Code
100 x 100 x 100 (4 x 4 x 4)	0444FH
100 x 150 x 150 (4 x 6 x 6)	0466FH
150 x 150 x 150 (6 x 6 x 6)	0666FH
150 x 150 x 200 (6 x 6 x 8)	0668FH
200 x 200 x 200 (8 x 8 x 8)	0888FH

### N-12 Stop Coupling



Diameter mm (in)	Product Code
100 (4)	0471AG
150 (6)	0671AG
200 (8)	0871AG
250 (10)	1071AG
300 (12)	1271AG
375 (15)	1571AG
450 (18)	1871AG
600 (24)	2471AG

### Repair Coupling



Diameter mm (in)	Product Code
100 (4)	0475AG
150 (6)	0675AG
200 (8)	0875AG
250 (10)	1075AG
300 (12)	1275AG
375 (15)	1575AG
450 (18)	1875AG
600 (24)	2475AG

### End Cap



Diameter mm (in)	Product Code
100 (4)	0432AG
150 (6)	0632AG
200 (8)	0832AG
250 (10)	1032AG
300 (12)	1232AG
375 (15)	1532AG
450 (18)	1832AG
600 (24)	2432AG

### Clean Out



Diameter mm (in)	Product Code
100 (4)	0474AG
150 (6)	0674AG
200 (8)	0874AG
250 (10)	1074AG
300 (12)	1274AG

# Nyloplast PVC Fittings

## Watertight Fittings

### N-12 Bell x N-12 Bell Increaser



Diameter mm (in)	Product Code
150 x 100 (6 x 4)	0611AG
200 x 100 (8 x 4)	0811AG
200 x 150 (8 x 6)	0812AG
250 x 100 (10 x 4)	1011AG
250 x 150 (10 x 6)	1012AG
250 x 200 (10 x 8)	1013AG
300 x 100 (12 x 4)	1211AG
300 x 150 (12 x 6)	1213AG
375 x 100 (15 x 4)	1511AG
375 x 150 (15 x 6)	1512AG
375 x 200 (15 x 8)	1513AG
375 x 250 (15 x 10)	1514AG
375 x 300 (15 x 12)	1515AG
450 x 100 (18 x 4)	1811AG
450 x 150 (18 x 6)	1812AG
450 x 200 (18 x 8)	1813AG
450 x 250 (18 x 10)	1814AG
450 x 300 (18 x 12)	1815AG
450 x 375 (18 x 15)	1816AG
600 x 100 (24 x 4)	2411AG
600 x 150 (24 x 6)	2412AG
600 x 200 (24 x 8)	2413AG
600 x 250 (24 x 10)	2414AG
600 x 300 (24 x 12)	2415AG
600 x 375 (24 x 15)	2416AG
600 x 450 (24 x 18)	2417AG

### HP Stop Coupler



Diameter mm (in)	Product Code
300 (12)	1271AGHP
375 (15)	1571AGHP
450 (18)	1871AGHP
600 (24)	2471AGHP
750 (30)	3071AGHP

### HP Repair Coupler



Diameter mm (in)	Product Code
300 (12)	1275AGHP
375 (15)	1575AGHP
450 (18)	1875AGHP
525 (21)	2175AGHP
600 (24)	2475AGHP
750 (30)	3075AGHP

### HP Bell x SWR Bell Adapter



Diameter mm (in)	Product Code
300 x 300 (12 x 12)	1269AGHP
375 x 375 (15 x 15)	1569AGHP
450 x 450 (18 x 18)	1869AGHP

# Nyloplast PVC Fittings

## Watertight Fittings

### HP Bell x SWR Spigot Adapter\*



Diameter mm (in)	Product Code
300 x 300 (12 x 12)	1268AGHP
375 x 375 (15 x 15)	1568AGHP
450 x 450 (18 x 18)	1868AGHP
600 x 600 (24 x 24)	2468AGHP

### HP Unsanded Manhole Adapter\*\*



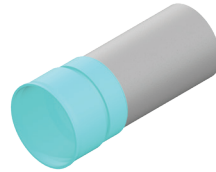
Diameter mm (in)	Product Code
300 (12)	1257AGHPU2
375 (15)	1557AGHPU2
450 (18)	1857AGHPU2
600 (24)	2457AGHPU2

### HP End Cap



Diameter mm (in)	Product Code
300 (12)	1232AGHP
375 (15)	1532AGHP
450 (18)	1832AGHP
600 (24)	2432AGHP
750 (30)	3032AGHP

### HP Sanded Manhole Adapter\*\*



Diameter mm (in)	Product Code
300 (12)	1257AGHP2
375 (15)	1557AGHP2
450 (18)	1857AGHP2
600 (24)	2457AGHP2

\* For pipe connection only

\*\*Two piece construction for steeper shoulder. Longer spigot length 24 (600 mm) fitting specifically for manhole connections

# Inserta Tee Fittings\*

## N-12

### N-12 into any Mainline Pipe\*\*

Diameter mm (in)	Product Code
100 into 150 (4 into 6)	4N126N12
100 into 200 (4 into 8)	4N128N12
100 into 250 (4 into 10)	4N1210-12FIT
100 into 300 (4 into 12)	4N1210-12FIT
100 into 375 (4 into 15)	4N1215+FIT
100 into 450 (4 into 18)	4N1215+FIT
100 into 600 (4 into 24)	4N1215+FIT
100 into 750 (4 into 30)	4N1215+FIT
100 into 900 (4 into 36)	4N1215+FIT
100 into 1050 (4 into 42)	4N1215+FIT
100 into 1200 (4 into 48)	4N1215+FIT
100 into 1500 (4 into 60)	4N1215+FIT
150 into 200 (6 into 8)	6N128N12
150 into 250 (6 into 10)	6N1210-12FIT
150 into 300 (6 into 12)	6N1210-12FIT
150 into 375 (6 into 15)	6N1215+FIT
150 into 450 (6 into 18)	6N1215+FIT
150 into 600 (6 into 24)	6N1215+FIT
150 into 750 (6 into 30)	6N1215+FIT
150 into 900 (6 into 36)	6N1215+FIT
150 into 1050 (6 into 42)	6N1215+FIT
150 into 1200 (6 into 48)	6N1215+FIT
150 into 1500 (6 into 60)	6N1215+FIT
200 into 300 (8 into 12)	8N1212-15FIT
200 into 375 (8 into 15)	8N1212-15FIT
200 into 450 (8 into 18)	8N1218+FIT
200 into 600 (8 into 24)	8N1218+FIT
200 into 750 (8 into 30)	8N1218+FIT
200 into 900 (8 into 36)	8N1218+FIT
200 into 1050 (8 into 42)	8N1218+FIT
200 into 1200 (8 into 48)	8N1218+FIT
200 into 1500 (8 into 60)	8N1218+FIT

### N-12 into N-12

Diameter mm (in)	Product Code
250 into 375 (10 into 15)	10N1215N12
250 into 450 (10 into 18)	10N12MF18-24N12
250 into 600 (10 into 24)	10N12MF18-24N12
250 into 750 (10 into 30)	10N12MF30-60N12
250 into 900 (10 into 36)	10N12MF30-60N12
250 into 1050 (10 into 42)	10N12MF30-60N12
250 into 1200 (10 into 48)	10N12MF30-60N12
250 into 1500 (10 into 60)	10N12MF30-60N12
300 into 450 (12 into 18)	12N12MF18-24N12
300 into 600 (12 into 24)	12N12MF18-24N12
300 into 750 (12 into 30)	12N12MF30-60N12
300 into 900 (12 into 36)	12N12MF30-60N12
300 into 1050 (12 into 42)	12N12MF30-60N12
300 into 1200 (12 into 48)	12N12MF30-60N12
300 into 1500 (12 into 60)	12N12MF30-60N12
375 into 600 (15 into 24)	15N12MF24-60N12
375 into 750 (15 into 30)	15N12MF24-60N12
375 into 900 (15 into 36)	15N12MF24-60N12
375 into 1050 (15 into 42)	15N12MF24-60N12
375 into 1200 (15 into 48)	15N12MF24-60N12
375 into 1500 (15 into 60)	15N12MF24-60N12
450 into 750 (18 into 30)	18N12MF30-60N12
450 into 900 (18 into 36)	18N12MF30-60N12
450 into 1050 (18 into 42)	18N12MF30-60N12
450 into 1200 (18 into 48)	18N12MF30-60N12
450 into 1500 (18 into 60)	18N12MF30-60N12
600 into 900 (24 into 36)	24N12MF36-60N12
600 into 1050 (24 into 42)	24N12MF36-60N12
600 into 1200 (24 into 48)	24N12MF36-60N12
600 into 1500 (24 into 60)	24N12MF36-60N12

\*\* Parts with FIT in name indicate Inserta Tee OneFit. These parts can fit any mainline type.



\* Inserta Tee can be used in storm and sanitary sewer applications and can fit ANY mainline pipe type. Contact your ADS representative for assistance with part configurations for: Concrete, Clay, CMP, PVC, Fiberglass, CIPP, DIP, StormTech, Nyloplast structures, etc.

# Inserta Tee Fittings\*

## SDR26/35

### SDR26/35 into any Mainline Pipe\*\*

Diameter mm (in)	Product Code
100 into 150 (4 into 6)	4P26FB6N12
100 into 200 (4 into 8)	4P26FB8N12
100 into 250 (4 into 10)	4P2610-12FIT
100 into 300 (4 into 12)	4P2610-12FIT
100 into 375 (94 into 15)	4P2615+FIT
100 into 450 (4 into 18)	4P2615+FIT
100 into 600 (4 into 24)	4P2615+FIT
100 into 750 (4 into 30)	4P2615+FIT
100 into 900 (4 into 36)	4P2615+FIT
100 into 1050 (4 into 42)	4P2615+FIT
100 into 1200 (4 into 48)	4P2615+FIT
100 into 1500 (4 into 60)	4P2615+FIT
150- into 200 (6 into 8)	6P26FB8N12
150 into 250 (6 into 10)	6P2610-12FIT
150 into 300 (6 into 12)	6P2610-12FIT
150 into 375 (6 into 15)	6P2615+FIT
150 into 450 (6 into 18)	6P2615+FIT
150 into 600 (6 into 24)	6P2615+FIT
150 into 750 (6 into 30)	6P2615+FIT
150 into 900 (6 into 36)	6P2615+FIT
150 into 1050 (6 into 42)	6P2615+FIT
150 into 1200 (6 into 48)	6P2615+FIT
150 into 1500 (6 into 60)	6P2615+FIT

\*\*SDR26 PVC Hub Options are Available from 100-375 mm (4-15)

### SDR35 into N-12

Diameter mm (in)	Product Code
250 into 375 (10 into 15)	10P3515N12
250 into 450 (10 into 18)	10P35MF18-24N12
250 into 600 (10 into 24)	10P35MF18-24N12
250 into 750 (10 into 30)	10P35MF30-60N12
250 into 900 (10 into 36)	10P35MF30-60N12
250 into 1050 (10 into 42)	10P35MF30-60N12
250 into 1200 (10 into 48)	10P35MF30-60N12
250 into 1500 (10 into 60)	10P35MF30-60N12
300 into 450 (12 into 18)	12P35MF18-24N12
300 into 600 (12 into 24)	12P35MF18-24N12
300 into 750 (12 into 30)	12P35MF30-60N12
300 into 900 (12 into 36)	12P35MF30-60N12
300 into 1050 (12 into 42)	12P35MF30-60N12
300 into 1200 (12 into 48)	12P35MF30-60N12
300 into 1500 (12 into 60)	12P35MF30-60N12
375 into 600 (15 into 24)	15P35MF24-60N12
375 into 750 (15 into 30)	15P35MF24-60N12
375 into 900 (15 into 36)	15P35MF24-60N12
375 into 1050 (15 into 42)	15P35MF24-60N12
375 into 1200 (15 into 48)	15P35MF24-60N12
375 into 1500 (15 into 60)	15P35MF24-60N12
450 into 750 (18 into 30)	18P35MF30-60N12
450 into 900 (18 into 36)	18P35MF30-60N12
450 into 1050 (18 into 42)	18P35MF30-60N12
450 into 1200 (18 into 48)	18P35MF30-60N12
450 into 1500 (18 into 60)	18P35MF30-60N12

### SDR35 into any Mainline Pipe

Diameter mm (in)	Product Code
200 into 300 (8 into 12)	8P3512-15FIT
200 into 375 (8 into 15)	8P3512-15FIT
200 into 450 (8 into 18)	8P3518+FIT
200 into 600 (8 into 24)	8P3518+FIT
200 into 750 (8 into 30)	8P3518+FIT
200 into 900 (8 into 36)	8P3518+FIT
200 into 1050 (8 into 42)	8P3518+FIT
200 into 1200 (8 into 48)	8P3518+FIT
200 into 1500 (8 into 60)	8P3518+FIT

\* Inserta Tee can be used in storm and sanitary sewer applications and can fit ANY mainline pipe type.

\*\* SDR35 PVC is typical for storm applications. SDR26 PVC is typical for sanitary applications. For assistance with 200-375 mm (8-15) SDR26 PVC applications please contact your ADS sales representative for more information.

# Inserta Tee Fittings\*

IPS/SCH40 PVC

## IPS/SCH40 into any Mainline Pipe

Diameter mm (in)	Product Code
100 into 150 (4 into 6)	4IPS6N12
100 into 200 (4 into 8)	4IPS8N12
100 into 250 (4 into 10)	4IPS10-12FIT
100 into 300 (4 into 12)	4IPS10-12FIT
100 into 375 (4 into 15)	4IPS15+FIT
100 into 450 (4 into 18)	4IPS15+FIT
100 into 600 (4 into 24)	4IPS15+FIT
100 into 750 (4 into 30)	4IPS15+FIT
100 into 900 (4 into 36)	4IPS15+FIT
100 into 1050 (4 into 42)	4IPS15+FIT
100 into 1200 (4 into 48)	4IPS15+FIT
100 into 1500 (4 into 60)	4IPS15+FIT
150 into 200 (6 into 8)	6IPS8N12
150 into 250 (6 into 10)	6IPS10-12FIT
150 into 300 (6 into 12)	6IPS10-12FIT
150 into 375 (6 into 15)	6IPS15+FIT
150 into 450 (6 into 18)	6IPS15+FIT
150 into 600 (6 into 24)	6IPS15+FIT
150 into 750 (6 into 30)	6IPS15+FIT
150 into 900 (6 into 36)	6IPS15+FIT
150 into 1050 (6 into 42)	6IPS15+FIT
150 into 1200 (6 into 48)	6IPS15+FIT
150 into 1500 (6 into 60)	6IPS15+FIT
200 into 300 (8 into 12)	8IPS12-15FIT
200 into 375 (8 into 15)	8IPS12-15FIT
200 into 450 (8 into 18)	8IPS18+FIT
200 into 600 (8 into 24)	8IPS18+FIT
200 into 750 (8 into 30)	8IPS18+FIT
200 into 900 (8 into 36)	8IPS18+FIT
200 into 1050 (8 into 42)	8IPS18+FIT
200 into 1200 (8 into 48)	8IPS18+FIT
200 into 1500 (8 into 60)	8IPS18+FIT

## IPS/SCH40 into N-12

Diameter mm (in)	Product Code
250 into 375 (10 into 15)	10IPS15N12
250 into 450 (10 into 18)	10IPSMF18-24N12
250 into 600 (10 into 24)	10IPSMF18-24N12
250 into 750 (10 into 30)	10IPSMF30-60N12
250 into 900 (10 into 36)	10IPSMF30-60N12
250 into 1050 (10 into 42)	10IPSMF30-60N12
250 into 1200 (10 into 48)	10IPSMF30-60N12
250 into 1500 (10 into 60)	10IPSMF30-60N12
300 into 450 (12 into 18)	12IPSMF18-24N12
300 into 600 (12 into 24)	12IPSMF18-24N12
300 into 750 (12 into 30)	12IPSMF30-60N12
300 into 900 (12 into 36)	12IPSMF30-60N12
300 into 1050 (12 into 42)	12IPSMF30-60N12
300 into 1200 (12 into 48)	12IPSMF30-60N12
300 into 1500 (12 into 60)	12IPSMF30-60N12

**C900/Ductile Iron Hub Options are Available from 100-300 mm (4-12).**

\* Inserta Tee can be used in storm and sanitary sewer applications and can fit ANY mainline pipe type. Contact your ADS representative for assistance with part configurations for: Concrete, Clay, CMP, PVC, Fiberglass, CIPP, DIP, StormTech, Nyloplast structures, etc.

# Inserta Tee

Hole Saws for Coring into Plastic Pipe\*

## Red Series for All Plastic Mainlines



Size mm (in)	Pilot Drill mm (in)	Weight kg (pounds)	Product Code
114 (4½)	12 (0.5)	1.4 (3)	R412SAW
165 (6½)	12 (0.5)	1.8 (4)	R612SAW
222 (8¾)	12 (0.5)	2.7 (6)	R834SAW

## Grey Series (Carbide Tipped) for Solid Wall HDPE Mainlines



Size mm (in)	Pilot Drill mm (in)	Weight kg (pounds)	Product Code
114 (4½)	19 (0.75)	2.7 (6)	PE412SAW
165 (6½)	19 (0.75)	4.0 (9)	PE612SAW
222 (8¾)	19 (0.75)	4.0 (9)	PE834SAW

## Blue Series for All Plastic Mainlines



Size mm (in)	Pilot Drill mm (in)	Weight kg (pounds)	Product Code
67 (2¾)	12 (0.5)	0.9 (2)	BL258SAW
95 (3¾)	12 (0.5)	1.4 (3)	BL334SAW
114 (4½)	12 (0.5)	1.4 (3)	BL412SAW
165 (6½)	12 (0.5)	1.8 (4)	BL612SAW
222 (8¾)	12 (0.5)	2.7 (6)	BL834SAW
276 (10¾)	19 (0.75)	5.4 (12)	BL1078SAW
327 (12¾)	19 (0.75)	6.8 (15)	BL1278SAW
402 (15 <sup>13</sup> / <sub>16</sub> )	19 (0.75)	9.5 (21)	BL151316SAW
487 (19 <sup>3</sup> / <sub>16</sub> )	19 (0.75)	15.9 (35)	BL19316SAW
643 (25 <sup>5</sup> / <sub>16</sub> )	19 (0.75)	20.4 (45)	BL25516SAW

## Orange Series (for SaniTite HP Mainlines)\*



Size mm (in)	Pilot Drill mm (in)	Weight kg (pounds)	Product Code
4¾	12 (0.5)	1.4 (3)	HP438SAW
6¾	12 (0.5)	1.8 (4)	HP638SAW
8¾	12 (0.5)	2.7 (6)	HP858SAW
276 (10¾)	19 (0.75)	5.4 (12)	HP1034SAW
327 (12¾)	19 (0.75)	6.8 (15)	HP1234SAW
402 (15¾)	19 (0.75)	9.5 (21)	HP1534SAW
487 (19 <sup>1</sup> / <sub>16</sub> )	19 (0.75)	15.9 (35)	HP19116SAW

\* For air-testable application only

\* When quoting hole saws, a ratio of one (1) saw for every 25 cuts is recommended.

# Inserta Tee

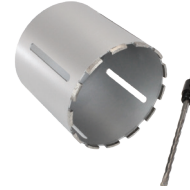
*Wet Diamond Bit Hole Saw for Coring Non-Plastic Pipe\**

## Gold Series (Use with Heavy Duty ½ Drill Motor)



Size mm (in)	Pilot Drill mm (in)	Weight kg (pounds)	Product Code
67 (2¾)	19 (0.75)	1.4 (3)	GA258BIT
95 (3¾)	19 (0.75)	4.5 (10)	GA334BIT
114 (4½)	19 (0.75)	5.4 (12)	GA412BIT
165 (6½)	19 (0.75)	8.1 (18)	GA612BIT
222 (8¾)	19 (0.75)	10.9 (24)	GA834BIT
276 (10¾)	19 (0.75)	15.0 (33)	GA1078BIT

## Silver Series (Use with Heavy Duty ½ Drill Motor)



Size mm (in)	Pilot Drill mm (in)	Weight kg (pounds)	Product Code
114 (4½)	10 (0.4)	1.8 (4)	S412BIT
165 (6½)	10 (0.4)	3.6 (8)	S612BIT
222 (8¾)	10 (0.4)	5.9 (13)	S834BIT

## Gold Series (Use with Coring Machine)\*\*



Size mm (in)	Pilot Drill mm (in)	Weight kg (pounds)	Product Code
114 (4½)	19 (0.75)	4.0 (9)	G412BIT
165 (6½)	19 (0.75)	6.8 (15)	G612BIT
222 (8¾)	19 (0.75)	9.5 (21)	G834BIT
276 (10¾)	19 (0.75)	13.6 (30)	G1078BIT
327 (12¾)	19 (0.75)	18.6 (41)	G1278BIT
402 (15 <sup>13</sup> / <sub>16</sub> )	19 (0.75)	26.8 (59)	G151316BIT
487 (19 <sup>3</sup> / <sub>16</sub> )	19 (0.75)	28.1 (62)	G19316BIT
643 (25 <sup>5</sup> / <sub>16</sub> )	19 (0.75)	29.5 (65)	G25516BIT

\*\* Hole saws for coring machines are equipped with a 31.75 mm (1¼) x 7 (thread) female adapter nut.

\* When quoting hole saws, a ratio of one (1) saw for every 10 cuts is recommended.

# Single Wall Fittings

## Couplers

### Internal Coupler



0315AA, 0417AA, 0615AA 0517AA, 0815AA, 1015AA

Diameter mm (in)	Package Qty.	Product Code
75 (3)	50	0315AA
100 (4)	16	0417AA
125 (5)	12	0517AA
150 (6)	9	0615AA
200 (8)	4	0815AA
250 (10)	4	1015AA

### Internal Reducing Coupler



Diameter mm (in)	Package Qty.	Product Code
125 x 100 (5 x 4)	16	0425AA
150 x 125 (6 x 5)	9	0526AA

### Snap Reducing Coupler



Diameter-Main x Stub mm (in)	Package Qty.	Product Code
100 x 75 (4 x 3)	24	0314AA
125 x 100 (5 x 4)	20	0514AA
150 x 100 (6 x 4)	9	0614AA
150 x 125 (6 x 5)	9	0516AA
200 x 150 (8 x 6)	9	0816AA
250 x 200 (10 x 8)	6	1018AA
300 x 250 (12 x 10)	1	1210AA
375 x 300 (15 x 12)	1	1512AA

### External Snap Coupler



Diameter mm (in)	Package Qty.	Product Code
75 (3)	24	0312AA
100 (4)	24	0412AA
125 (5)	24	0512AA
150 (6)	8	0612AA
200 (8)	6	0812AA
250 (10)	3	1012AA

### Split Coupler



Diameter mm (in)	Package Qty.	Product Code
100 (4)	24	0411AA
125 (5)	24	0511AA
150 (6)	14	0611AA
200 (8)	8	0811AA
250 (10)	12	1011AA

# Single Wall Fittings

End Plugs, End Caps & Adapters

## Snap End Caps\*



0432AA



0332AA, 0832AA, 1032AA

Diameter mm (in)	Package Qty.	Product Code
75 (3)	30	0332AA
100 (4)	40	0432AA
200 (8)	6	0832AA
250 (10)	6	1032AA

## Split End Caps\*



0331AA



0431AA, 0531AA, 0631AA

Diameter mm (in)	Package Qty.	Product Code
100 (4)	34	0431AA
125 (5)	24	0531AA
150 (6)	12	0631AA
300 mm (12)	4	1267AA
375 mm (15)	1	1567AA
450 mm (18)	1	1867AA
600 mm (24)	1	2467AA

## Internal End Plugs



Solid End Plug



Perforated End Plug

Diameter mm (in)	Package Qty.	Type	Product Code
75 (3)	100	Solid	0333AA
100 (4)	100	Solid	0433AA
		Perforated	0434AA
125 (5)	100	Solid	0533AA
150 (6)	50	Solid	0633AA

## Dissimilar Snap Adapters



0362AA



0462AA



0467AA, 0463AA



0562AA, 0662AA, 0862AA

Diameter mm (in)	Package Qty.	Type	Product Code
75 (3)	24	Clay	0362AA
100 (4)	24	Clay	0462AA
125 (5)	24	Clay	0562AA
150 (6)	11	Clay	0662AA
200 (8)	9	Clay	0862AA
100 (4)	24	Sewer & Drain	0467AA
100 (4)	24	Septic Tank	0463AA

## Downspout Adapters



0364AA



0464AA



0465AA



0466AA



0664AA

Pipe Diameter x Downspout Dimensions mm (in)	Package Qty.	Product Code
75 x 81 x 62.5 (3 x 3.25 x 2.5)	24	0364AA
100 x 81 x 62.5 (4 x 3.25 x 2.5)	24	0464AA
100 x 106 x 75 (4 x 4.25 x 3)	20	0465AA
100 x 63 x 63 (4 x 2.56 x 2.56)	24	0466AA
150 x 100 x 150 (6 x 4 x 6)	1	0664AA

\*End caps are for horizontal pipe applications only.

# Single Wall Fittings

## Tees

### Snap Tee



0421AA



0321AA, 0525AA, 0626AA

Diameter mm (in)	Package Qty.	Product Code
75 (3)	12	0321AA
100 (4)	8	0421AA
125 (5)	4	0525AA
150 (6)	3	0626AA

### Blind Tee



Diameter mm (in)	Package Qty.	Product Code
100 (4)	8	0441AA
150 (6)	3	0641AA

### Reducing Tee



Diameter Main x Stub mm (in)	Package Qty.	Product Code
125 x 100 (5 x 4)	4	0524AA
150 x 100 (6 x 4)	3	0624AA

### Multiple Tee



Diameter Main x Stub mm (in)	Package Qty.	Product Code
150 x 75/100/125/150 (6 x 3/4/5/6)	3	0644AA
200 x 100/125/150/200 (8 x 4/5/6/8)	1	0844AA
250 x 150/200/250 (10 x 6/8/10)	1	1044AA

### Blind Multiple Tee



Diameter Main x Stub mm (in)	Package Qty.	Product Code
200 x 100/150/200 (8 x 4/6/8)	1	0847AA
250 x 200/250 (10 x 8/10)	1	1047AA
300 x 250/300 (12 x 10/12)	1	1247AA

### Multiple Cross Tee



Diameter mm (in)	Package Qty.	Product Code
150 (6)	3	0654AA

# Single Wall Fittings

Tap Tee, Elbow, Wye

## Internal Tap Tee



Diameter Main x Stub mm (in)	Package Qty.	Product Code
100 x 150/200/250/300 (4 x 6/8/10/12)	24	0480AA

## External Tap Tee



Diameter Main x Stub mm (in)	Package Qty.	Product Code
75 x 150/200 (3 x 6/8)	24	0350AA
100 x 150/200 (4 x 6/8)	24	0450AA
100 x 250/300 (4 x 10/12)	24	0410AA
125 x 250/300 (5 x 10/12)	25	0550AA
150 x 375/450/600 (6 x 15/18/24)	25	0650AA
150 x 750/900 (6 x 30/36)	25	0670AA

## Wye



Diameter mm (in)	Package Qty.	Product Code
75 (3)	7	0322AA
100 (4)	5	0422AA
125 (5)	4	0522AA
150 (6)	2	0622AA
200 (8)	1	0822AA

## 90° Snap Elbow



0490AA

0390AA

Diameter mm (in)	Package Qty.	Product Code
75 (3)	12	0390AA
100 (4)	10	0490AA

## 45° Snap Elbow



Diameter mm (in)	Package Qty.	Product Code
100 (4)	15	0445AA

# Specialty Fittings

## Hickenbottom & Precision Intakes

### Hickenbottom



Hickenbottom Riser



Hickenbottom Restrictor

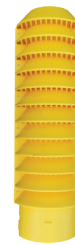
Size mm (in)	Description	Product Code
125 x 25 (5 x 1)	Orange Intake (12 holes)	5013GC
125 x 25 (5 x 1)	Orange Riser with Cap Top	5023GC
125 x 8 (5 x 5/16)	Orange Extension	5033GC
125 (5)	Blind Tee	5043GC
125 (5)	Restrictor	5063GC
150 x 25 (6 x 1)	Orange Riser with Cap Top	6023GC
150 x 8 (6 x 5/16)	Orange Extension	6033GC
150 (6)	Black Slotted Intake	6073GC
150 (6)	Black Blank Section	6053GC
150 (6)	Black Riser Blind Tee	6043GC
150 (6)	Restrictor	6063GC
200 x 25 (8 x 1)	Orange Riser with Cap Top	0823GC
200 x 8 (8 x 5/16)	Orange Extension	0833GC
200 (8)	Black Slotted Intake	0873GC
200 (8)	Black Blank Section	0853GC
200 (8)	Black Riser Blind Tee	0843GC
200 (8)	Restrictor	0863GC
250 x 25 (10 x 1)	Orange Riser with Cap Top	1023GC
250 x 8 (10 x 5/16)	Orange Extension	1033GC
250 (10)	Black Slotted Intake	1073GC
250 (10)	Black Blank Section	1053GC
250 (10)	Black Riser Blind Tee	1043GC
300 x 25 (12 x 1)	Orange Riser with Cap Top	1223GC
300 x 8 (12 x 5/16)	Orange Extension	1233GC
300 (12)	Black Slotted Intake	1273GC
300 (12)	Black Blind Tee	1243GC

### Precision Intakes



Size mm (in)	Description	Product Code
150 x 25 (6 x 1)	Yellow Riser with Cap Top	6023GCY
150 x 8 (6 x 5/16)	Yellow Extension	6033GCY
150 (6)	Black Riser Blind Tee	6043GCY
150 (6)	Restrictor	6063GCY
200 x 25 (8 x 1)	Yellow Riser with Cap Top	0823GCY
200 x 8 (8 x 5/16)	Yellow Extension	0833GCY
200 (8)	Black Riser Blind Tee	0843GCY
200 (8)	Restrictor	0863GCY
250 x 25 (10 x 1)	Yellow Riser with Cap Top	1023GCY
250 x 8 (10 x 5/16)	Yellow Extension	1033GCY
250 (10)	Black Riser Blind Tee	1043GCY

### Quick Drain Riser



Size Diameter x inlet mm (in)	Product Code
150 x 150 (6 x 6)	0606QD
250 x 200 (10 x 8)	1008QD
150 x 150 (6 x 6) adjustable inlet	0606TPTQD

# Specialty Fittings

End Sections, Trash & Animal Guards

## Animal Metal Finger Guards



Size mm (in)	Material	Quantity	Product Code
100 (4)	Zinc	100	0470DA
100 (4)	Stainless Steel	100	0470DASS
150 (6)	Zinc	100	0670DA
150 (6)	Stainless Steel	100	0670DASS
200 (8)	Zinc	50	0870DA
200 (8)	Stainless Steel	1	0870DASS
250 (10)	Zinc	30	1070DA
300 (12)	Zinc	30	1270DAB
375 (15)	Zinc	10	1570DA
450 (18)	Zinc	1	1870DA
600 (24)	Zinc	1	2470DA
750 (30)	Zinc	1	3070DA
900 (36)	Zinc	1	3670DA
1050 (42)	Zinc	1	4270DA
1200 (48)	Zinc	1	4870DA

## Flared End Sections



Size mm (in)	Product Code
250 (10)	1015NP
300/375 (12/15)	1215NP
450 (18)	1810NP
600 (24)	2410NP

## Animal Solid Guards



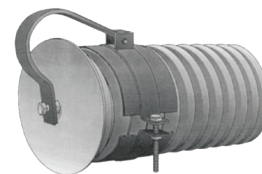
Size mm (in)	Product Code
100 (4)	0471DA
150 (6)	0671DA
200 (8)	0871DA
250 (10)	1071DA
300 (12)	1271DA

## Bar Guards



Size mm (in)	Product Code
100 (4)	0420DAB
125 (5)	0520DAB
150 (6)	0620DAB
200 (8)	0820DAB
250 (10)	1020DA
300 (12)	1220DA
375 (15)	1520DA
450 (18)	1820DA
600 (24)	2420DA
750 (30)	3020DA
900 (36)	3620DA

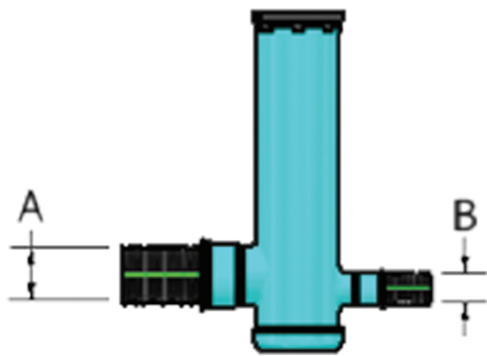
## Flap Gates



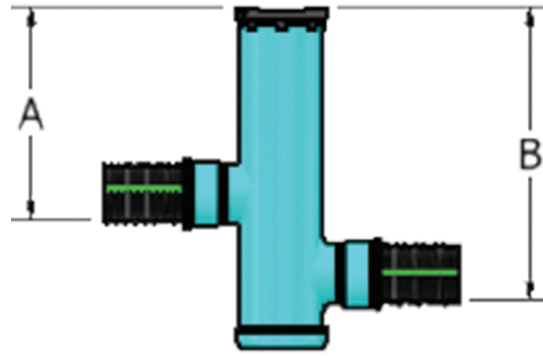
Size mm (in)	Product Code
100 (4)	0440DA
150 (6)	0640DA
200 (8)	0840DA
250 (10)	1040DA
300 (12)	1240DA
375 (15)	1540DA
450 (18)	1840DA
600 (24)	2440DA
750 (30)	3040DA
900 (36)	3640DA

# Nyloplast

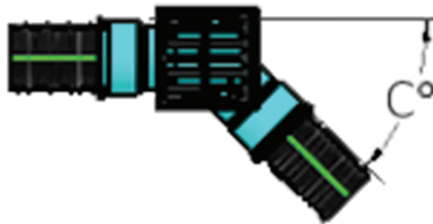
## Drain Basins



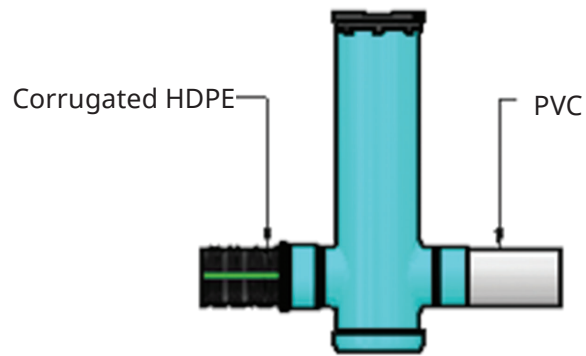
Change Diameter



Change Elevation



Change Direction



Change Pipe

Part Number	Product Description mm (in.)	Available Outlets mm (in.)
2808AG__	200 (8) Custom Basin	100-200 (4-8)
2810AG__	250 (10) Custom Basin	100-250 (4-10)
2812AG__	300 (12) Custom Basin	100-300 (4-12)
2815AG__	375 (15) Custom Basin	100-375 (4-15)
2818AG_	450 (18) Custom Basin	100-450 (4-18)
2824AG__	600 (24) Custom Basin	100-600 (4-24)
2830AG__	750 (30) Custom Basin	100-750 (4-30)
2836AG__	900 (36) Custom Basin	100-900 (4-36)

28 08 AG \_\_

- 28 is our standard drain basin series. Includes all round grate options
- The next two numbers represent the basin body diameter
- AG is the product code for Drain Basins
- The second set of numbers is the overall height of the drain basin in foot increments 3 , 5 , 7 , 10

Drain Basins connect to these common pipe types: ADS N12, ADS HP, PVC SCH.40, SCH.80, PVC. If pipe type does not fit any of these please note type of pipe and outside diameter of pipe and call Nyloplast at 866-888-8479 for technical assistance.

# Nyloplast

## Inline Drains

### Inline Drains

Part Number	Product Description mm (in.)	Available Outlets mm (in.)
2708AG_X	200 (8) Inline Drain	100-200 (4-8)
2710AG_X	250 (10) Inline Drain	100-250 (4-10)
2712AG_X	300 (12) Inline Drain	100-300 (4-12)
2715AG_X	375 (15) Inline Drain	100-375 (4-15)
2718AG_X	450 (18) Inline Drain	100-450 (4-18)
2724AG_X	600 (24) Inline Drain	100-600 (4-24)
2730AG_X	750 (30) Inline Drain	100-750 (4-30)
2736AG_X	900 (36) Inline Drain	100-900 (4-36)

The set of blanks is the pipe size adapting to (choose from 04, 06, 08, 10, 12, 15, 18, 24 or 30)

The **X** represents the pipe type adapting to. Replace **X** with one of the following:

**N** = ADS dual wall pipe

**D** = DWV PVC (Sch 40 or Sch 80)

**S** = SWR PVC (ASTM D3034; SDR 35 SWR & SDR 26 SWR PVC)

**O** = Big O/Armtec

If pipe type does not fit any of these, leave **X** blank and note type of pipe and outside diameter of pipe.



### Universal Inline Drains

Part Number	Product Description	Available Outlets mm (in.)
2708AGNB	HDPE gasketed connections	100-200 (4-8)
2708AGSB	PVC glue joint connections	100-200 (4-8)
2712AGNB	HDPE gasketed connections	150-300 (6-12)
2712AGSB	PVC glue joint connections	150-250 (6-10)
2712AG4NB	HDPE gasketed connections	100-300 (4-12)
2712AG4SB	PVC glue joint connections	100-250 (4-10)



\* 12 HDPE outlet connections are not gasketed. Watertight connection with gasket is available upon request

# Nyloplast

## Inspection Ports

### Inspection Ports for StormTech Systems

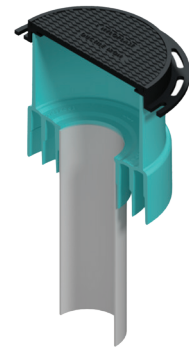
Part Number	Product Description mm (in.)
2708AG4IPKIT	200 x 100 (8 x 4) Inspection Port Kit
2712AG6IPKIT	300 x 150 (12 x 6) Inspection Port Kit
2712AG10IPKIT	300 x 250 (12 x 10) Inspection Port Kit

\*\_IPKIT includes frame & solid cover, PVC inspection port body, SDR-35 Inserta Tee, and 4 oz. water solution bottle



### Inspection Ports for StormTech Systems (Solid cover included; Inserta Tee not included)

Part Number	Product Description mm (in.)
2708AG4IP	200 x 100 (8 x 4) Inspection Port ONLY
2712AG6IP	300 x 150 (12 x 6) Inspection Port ONLY
2712AG10IP	300 x 250 (12 x 10) Inspection Port ONLY



# Nyloplast

## Curb Inlet Structures

### Drain Basins

Part Number	Product Description m (ft.)	Available Outlets mm (in.)
3012AGS__	.6 x .6 (2 x 2) Square Grate	100-300 (4-12)
3015AGS__	.6 x .6 (2 x 2) Square Grate	100-375 (4-15)
3018AGS__	.6 x .6 (2 x 2) Square Grate	100-450 (4-18)
3024AGS__	.6 x .6 (2 x 2) Square Grate	100-600 (4-24)
3030AGS__	.6 x .6 (2 x 2) Square Grate	100-750 (4-30)
3036AGS__	.6 x .6 (2 x 2) Square Grate	100-900 (4-36)
3018AGR__	.6 x .9 (2 x 3) Rect. Grate	100-450 (4-18)
3024AGR__	.6 x .9 (2 x 3) Rect. Grate	100-600 (4-24)
3030AGR__	.6 x .9 (2 x 3) Rect. Grate	100-750 (4-30)
3036AGR__	.6 x .9 (2 x 3) Rect. Grate	100-900 (4-36)

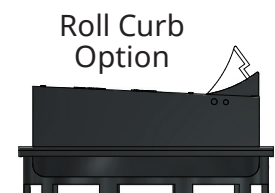
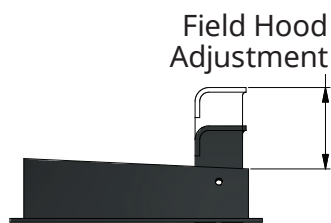
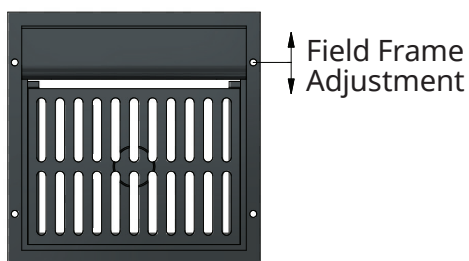


The second set of numbers is the overall height of the drain basin in foot increments 3, 5, 7, 10

Drain Basin connects to these common pipe types:

- N** = ADS dual wall pipe
- D** = DWV PVC (Sch 40 or Sch 80)
- S** = SWR PVC (ASTM D3034; SDR 35 SWR & SDR 26 SWR PVC)
- O** = Big O/Armtec

If pipe type does not fit any of these please note type of pipe and outside diameter of pipe and call Nyloplast at 866-888-8479 for technical assistance.



# Nyloplast

## Road & Highway Structures

### Drain Basins

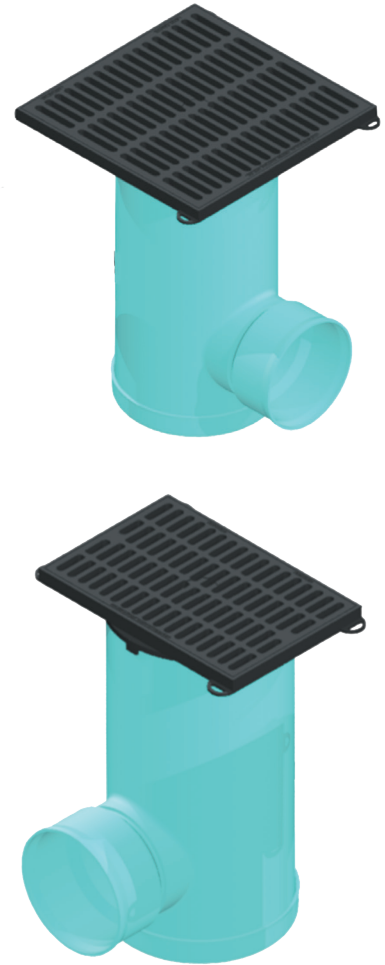
Part Number	Product Description m (ft.)	Available Outlets mm (in.)
3212AGS__	.6 x .6 (2 x 2) Square Grate	100-300 (4-12)
3215AGS__	.6 x .6 (2 x 2) Square Grate	100-375 (4-15)
3218AGS__	.6 x .6 (2 x 2) Square Grate	100-450 (4-18)
3224AGS__	.6 x .6 (2 x 2) Square Grate	100-600 (4-24)
3230AGS__	.6 x .6 (2 x 2) Square Grate	100-750 (4-30)
3236AGS__	.6 x .6 (2 x 2) Square Grate	100-900 (4-36)
3218AGR__	.6 x .9 (2 x 3) Rect. Grate	100-450 (4-18)
3224AGR__	.6 x .9 (2 x 3) Rect. Grate	100-600 (4-24)
3230AGR__	.6 x .9 (2 x 3) Rect. Grate	100-750 (4-30)
3236AGR__	.6 x .9 (2 x 3) Rect. Grate	100-900 (4-36)

The second set of numbers is the overall height of the drain basin in foot increments 3, 5, 7, 10

Drain Basin connects to these common pipe types:

- N** = ADS dual wall pipe
- D** = DWV PVC (Sch 40 or Sch 80)
- S** = SWR PVC (ASTM D3034; SDR 35 SWR & SDR 26 SWR PVC)
- O** = Big O/Armtec

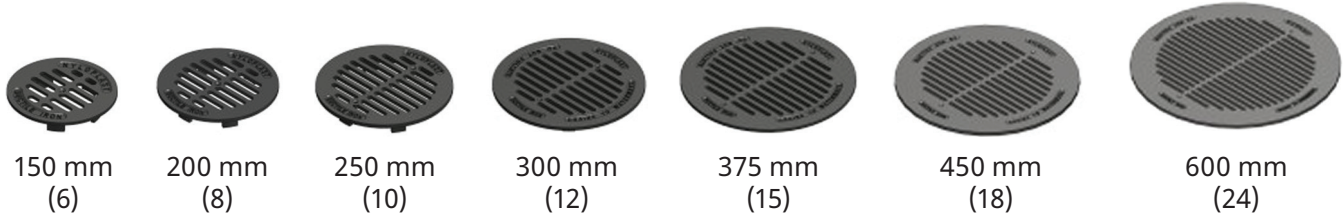
If pipe type does not fit any of these please note type of pipe and outside diameter of pipe and call Nyloplast at 866-888-8479 for technical assistance.



# Nyloplast

## Grates

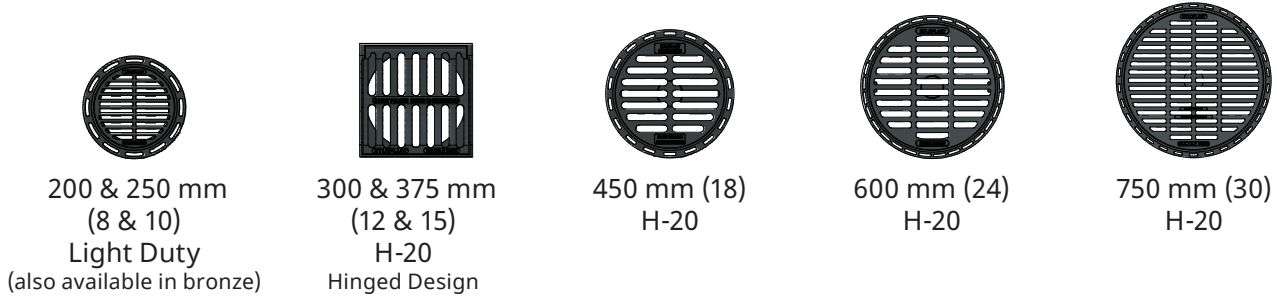
### Drop-In Grates



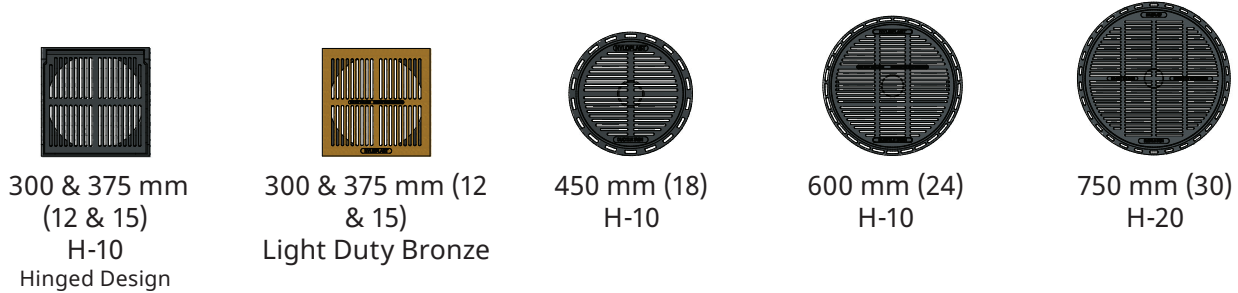
### Domed Grates



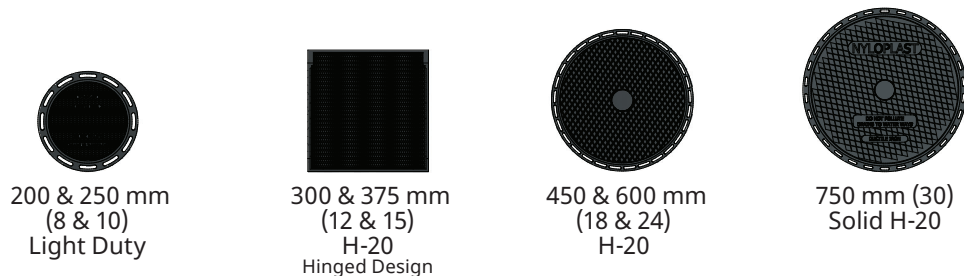
### Standard Grates



### Pedestrian Grates



### Solid Cover Grates



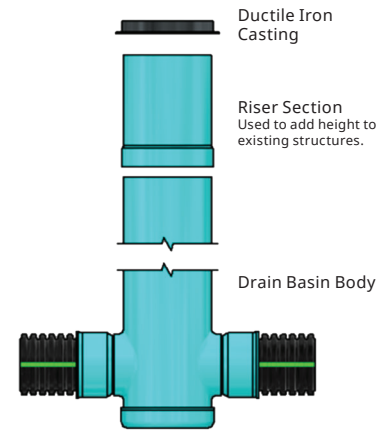
# Nyloplast

## Riser Sections, Sump Inserts & Add-A-Branch

### Riser Sections

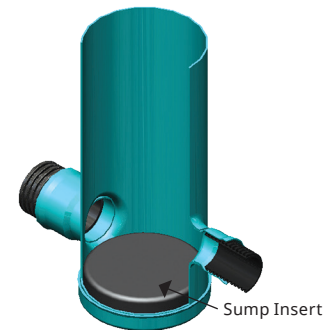
Part Number	Product Description mm (in.)
2908AG__	200 (8) Riser Section
2910AG__	250 (10) Riser Section
2912AG__	300 (12) Riser Section
2915AG__	375 (15) Riser Section
2918AG__	450 (18) Riser Section
2924AG__	600 (24) Riser Section
2930AG__	750 (30) Riser Section
2936AG__	900 (36) Riser Section

Blanks are the riser's height, choose from 01-07 (one foot- two foot).



### Sump Inserts

Part Number	Basin Diameter mm (in.)
3812AGSI	300 (12)
3815AGSI	375 (15)
3818AGSI	450 (18)
3824AGSI	600 (24)
3830AGSI	750 (30)



### Add-A-Branch Kits

Part No.	Pipe Size mm (in.)	Min. Basin Size mm (in.)
6004AG_	100 (4)	200 (8)
6006AG_	150 (6)	250 (10)
6008AG_	200 (8)	300 (12)
6010AG__	250 (10)	375 (15)
6012AG_	300 (12)	450 (18)
6015AG_	375 (15)	600 (24)
6004AG_30	100 (4)	Spec. to 750 (30) & 900 (36)
6006AG_30	150 (6)	Spec. to 750 (30) & 900 (36)
6008AG_30	200 (8)	Spec. to 750 (30) & 900 (36)
6010AG_30	250 (10)	Spec. to 750 (30) & 900 (36)
6012AG_30	300 (12)	Spec. to 750 (30) & 900 (36)
6015AG_30	375 (15)	Spec. to 750 (30) & 900 (36)
6018AG_30	450 (18)	Spec. to 750 (30) & 900 (36)
6024AG_36	600 (24)	Spec. to 900 (36)



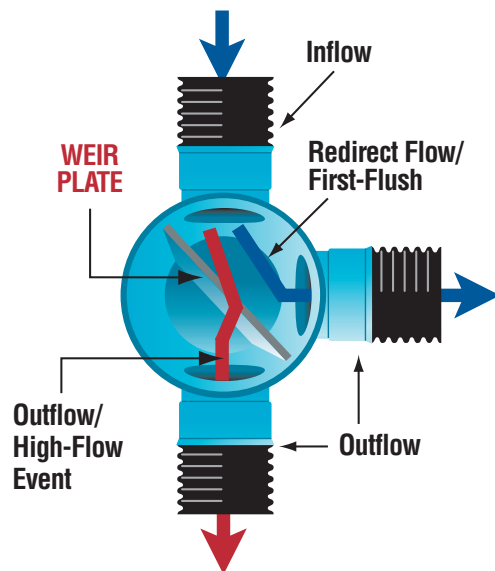
# Nyloplast

## Weir Structures

### Weir Structures

Part Number	Product Description
2824AG_WE	600 (24) Custom Basin with Grate & Weir
2830AG_WE	750 (30) Custom Basin with Grate & Weir
2836AG_WE	900 (36) Custom Basin with Grate & Weir
3024AGS_WE	600 (24) Curb Inlet Structure with 2' x 2' (0.6 x 0.6 m) Grate & Weir
3030AGS_WE	750 (30) Curb Inlet Structure with 2' x 2' (0.6 x 0.6 m) Grate & Weir
3036AGS_WE	900 (36) Curb Inlet Structure with 2' x 2' (0.6 x 0.6 m) Grate & Weir
3024AGR_WE	600 (24) Curb Inlet Structure with 2' x 3' (0.6 x 0.9 m) Grate & Weir
3030AGR_WE	750 (30) Curb Inlet Structure with 2' x 3' (0.6 x 0.9 m) Grate & Weir
3036AGR_WE	900 (36) Curb Inlet Structure with 2' x 3' (0.6 x 0.9 m) Grate & Weir
3224AGS_WE	600 (24) Road & Hwy Structure with 2' x 2' (0.6 x 0.6 m) Grate & Weir
3230AGS_WE	750 (30) Road & Hwy Structure with 2' x 2' (0.6 x 0.6 m) Grate & Weir
3236AGS_WE	900 (36) Road & Hwy Structure with 2' x 2' (0.6 x 0.6 m) Grate & Weir
3224AGR_WE	600 (24) Road & Hwy Structure with 2' x 3' (0.6 x 0.9 m) Grate & Weir
3230AGR_WE	750 (30) Road & Hwy Structure with 2' x 3' (0.6 x 0.9 m) Grate & Weir
3236AGR_WE	900 (36) Road & Hwy Structure with 2' x 3' (0.6 x 0.9 m) Grate & Weir

The blank is the height of structure, either 1.5 or 3 m (5' or 10').



# Retention/Detention

LandMax Manifolds - Size on Size Stubs

## Plain End Component Manifold

Pipe Size mm (in)	Product Code		
	Single	Double	Triple
300 (12)	1251AN	1252AN	1253AN
375 (15)	1551AN	1552AN	1553AN
450 (18)	1851AN	1852AN	1853AN
600 (24)	2451AN	2452AN	2453AN
750 (30)	3051AN	3052AN	3053AN
900 (36)	3651AN	3652AN	3653AN
1050 (42)	4251AN	4252AN	
1200 (48)	4851AN	4852AN	
1500 (60)	6051AN	6052AN	



N-12 PLAIN END SINGLE



N-12 PLAIN END DOUBLE



N-12 PLAIN END TRIPLE

## Watertight Bell End Component Manifold

Pipe Size mm (in)	Product Code		
	Single	Double	Triple
300 (12)	1251AN65B	1252AN65B	1253AN65B
375 (15)	1551AN65B	1552AN65B	1553AN65B
450 (18)	1851AN65B	1852AN65B	1853AN65B
600 (24)	2451AN65B	2452AN65B	2453AN65B
750 (30)	3051AN65B	3052AN65B	3053AN65B
900 (36)	3651AN65B	3652AN65B	3653AN65B
1050 (42)	4251AN65BB	4252AN65B	
1200 (48)	4851AN65BB	4852AN65B	
1500 (60)	6051AN65BB	6052AN65B	



N-12 WT BELL END SINGLE



N-12 WT BELL END DOUBLE



N-12 WT BELL END TRIPLE

## Watertight Gasket End Component Manifold

Pipe Size mm (in)	N-12 WT Component Manifold Gasket End Product Code		
	Single	Double	Triple
375 (15)	1551AN65G	1552AN65G	
450 (18)	1851AN65G		1853AN65G
600 (24)	2451AN65G	2452AN65G	2453AN65G
750 (30)	3051AN65G	3052AN65G	3053AN65G
900 (36)	3651AN65G	3652AN65G	3653AN65G
1050 (42)	4251AN65G	4252AN65G	
1200 (48)	4851AN65G	4852AN65G	
1500 (60)	6051AN65G	6052AN65G	



N-12 WT GASKET END SINGLE



N-12 WT GASKET END DOUBLE



N-12 WT GASKET END TRIPLE

NOTE: CONTACT YOUR LOCAL SALES REPRESENTATIVE FOR AVAILABILITY OF SIZES NOT LISTED ABOVE. \*FOR RETENTION SYSTEMS ONLY.

# Retention/Detention

## LandMax Manifold Bend

### N-12 90° Bend Manifold

Pipe Size mm (in)	Plain End	WT Bell/Bell	WT Gasket/Gasket	WT Bell/Gasket
300 (12)	1298AN	1298AN65BB	1298AN65GG	1298AN65BG
375 (15)	1598AN	1598AN65BB	1598AN65GG	1598AN65BG
450 (18)	1898AN	1898AN65BB	1898AN65GG	1898AN65BG
600 (24)	2498AN	2498AN65BB	2498AN65GG	2498AN65BG
750 (30)	3098AN	3098AN65BB	3098AN65GG	3098AN65BG
900 (36)	3698AN	3698AN65BB	3698AN65GG	3698AN65BG
1050 (42)	4298AN	4298AN65BB	4298AN65GG	4298AN65BG
1200 (48)	4898AN	4898AN65BB	4898AN65GG	4898AN65BG
1500 (60)	6098AN	6098AN65BB	6098AN65GG	6098AN65BG



**N-12  
PLAIN END**



**N-12 WT  
BELL x BELL**



**N-12 WT  
GASKET x GASKET**



**N-12 WT  
BELL x GASKET**

NOTE: CONTACT YOUR LOCAL SALES REPRESENTATIVE FOR AVAILABILITY OF SIZES NOT LISTED ABOVE.  
\*FOR RETENTION SYSTEMS ONLY.

# Retention/Detention

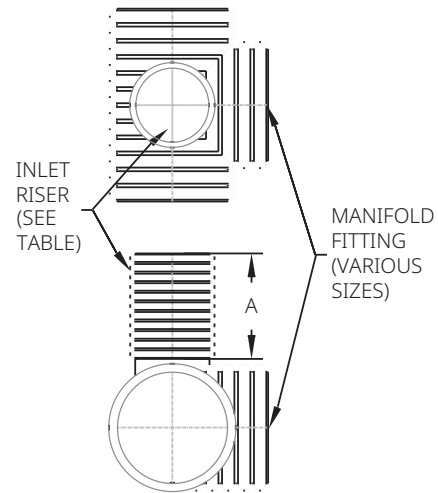
## LandMax® Accessories

### Fabricated Manifold Inlet Riser

Pipe Size mm (in)	Plain End
100 (4)	0403AN
150 (6)	0603AN
200 (8)	0803AN
250 (10)	1003AN
300 (12)	1203AN
375 (15)	1503AN
450 (18)	1803AN
600 (24)	2403AN

This component item can only be ordered with standard manifold fittings or standard pipe. When ordering this component item, be sure to include shop drawing showing the location of inlet riser on standard manifold or pipe product.

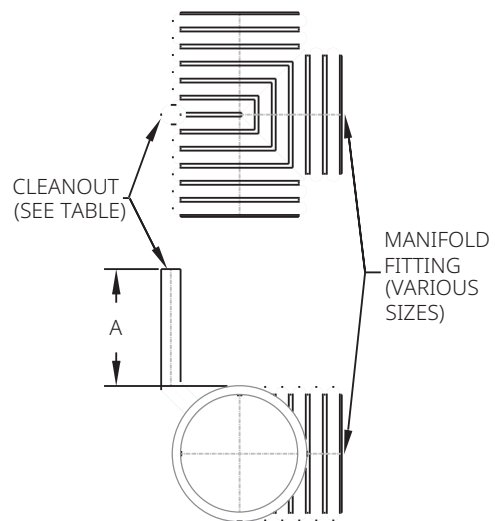
Contact your local sales representative for acceptable size combinations, i.e.: 48 manifold fitting with a 24 diameter riser. **Not all combinations of inlet riser on standard manifold or pipe product are allowed.**



### Fabricated Manifold Cleanout Riser

Pipe Size mm (in)	Plain End
100 (4)	0402AN
150 (6)	0602AN
200 (8)	0802AN

This component item can only be ordered with standard manifold fittings. When ordering this component item, be sure to include shop drawing showing the location of inlet riser on standard manifold.

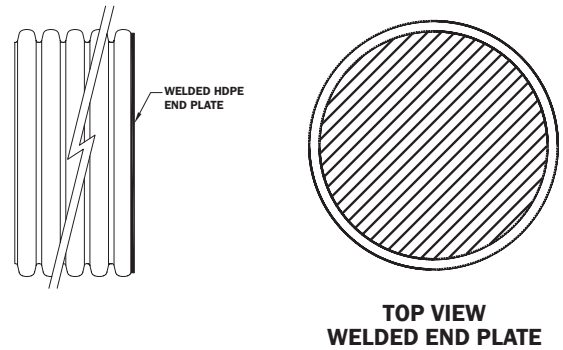


# Retention/Detention

LandMax® Accessories

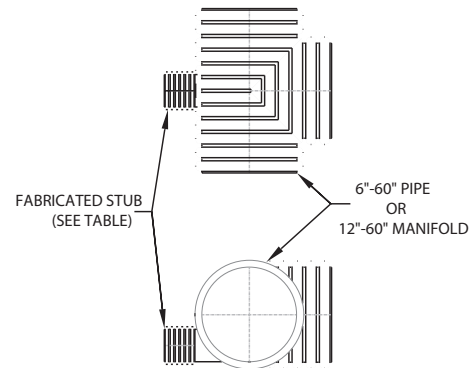
## Welded End Plates - ST & WT Connection\*

Pipe Size mm (in)	Plain End
450 (18)	1809AN
600 (24)	2409AN
750 (30)	3009AN
900 (36)	3609AN
1050 (42)	4209AN
1200 (48)	4809AN
1500 (60)	6009AN



## Fabricated Stub

Pipe Size mm (in)	Plain End
100 (4)	0406AN
150 (6)	0606AN
200 (8)	0806AN
250 (10)	1006AN
300 (12)	1206AN
375 (15)	1506AN
450 (18)	1806AN
600 (24)	2406AN



This component item can only be ordered with standard manifold fittings or standard pipe. When ordering this component item, be sure to include shop drawing showing the location of stub on standard manifold or pipe product.

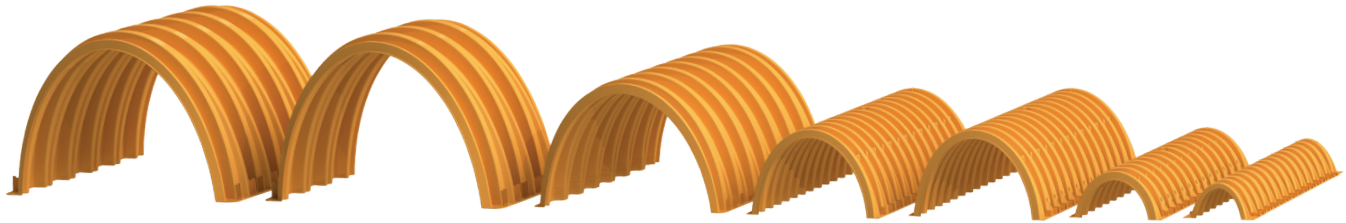
Contact your local sales representative for acceptable size combinations, i.e.: 48 manifold fitting with a 24 stub.  
**Not all combinations of stub on standard manifold or pipe product are allowed.**

\*End plates are for horizontal pipe applications only.

# Retention/Detention

## StormTech Chambers & End Caps

### StormTech Chambers



MC-7200

MC-4500

MC-3500

SC-800

DC-780

SC-310

SC-160LP

Product	Product Code	Dimensions L x W x H mm (in)	Nominal Weight kg (lbs)	Storage Capacity m <sup>3</sup> (ft <sup>3</sup> )	Minimum Installed Storage m <sup>3</sup> (ft <sup>3</sup> )
SC-160 Chamber	SC160	2170 x 635 x 305 (85.4 x 25 x 12)	10.9 (24)	0.19 (6.85)	0.42 (14.7)
SC-310 Chamber	SC310	2170 x 864 x 406 (85.4 x 34 x 16)	16.8 (37)	0.42 (14.7)	0.88 (31.0)
DC-780 Chamber	DC780	2170 x 1295 x 762 (85.4 x 51 x 30)	36.3 (80)	1.30 (46.2)	2.20 (78.4)
SC-800 Chamber	SC800	2169 x 1295 x 838 (85.4 x 51 x 33)	37.1 (82)	1.43 (50.6)	2.29 (81.0)
MC-3500 Chamber	MC3500	2286 x 1956 x 1143 (90 x 77 x 45)	60.8 (134)	3.11 (109.9)	4.96 (175.0)
MC-4500 Chamber	MC4500	1321 x 2540 x 1524 (52 x 100 x 60)	56.7 (125)	3.01 (106.5)	4.60 (162.6)
MC-7200 Chamber	MC7200	2108 x 2540 x 1524 (83 x 100 x 60)	91.6 (202)	4.98 (175.9)	7.57 (267.3)

### StormTech End Caps



MC-7200  
End Cap



MC-4500  
End Cap



MC-3500  
End Cap



SC-800  
End Cap



SC-310  
End Cap



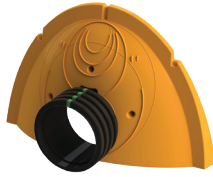
SC-160LP  
End Cap

Product	Product Code	Dimensions L x W x H mm (in)	Nominal Weight kg (lbs)	Storage Capacity m <sup>3</sup> (ft <sup>3</sup> )	Minimum Installed Storage m <sup>3</sup> (ft <sup>3</sup> )
SC-160 End Cap	SC160IEPP	112 x 472 x 297 (4.4 x 18.6 x 11.7)	0.6 (2)		
SC-310 End Cap	SC310EPE	252 x 737 x 396 (9.9 x 29 x 15.6)	1.8 (4)		
DC-780 End Cap	SC740EPE	310 x 1166 x 744 (12.2 x 45.9 x 29.3)	5.9 (13)		
SC-800 End Cap	SC800EPE	310 x 1181 x 828 (12.2 x 46.5 x 32.6)	5.9 (13)		
MC-3500 End Cap	MC3500IEPP	673 x 1803 x 1145 (26.5 x 71 x 45.1)	22.2 (49)	0.42 (14.9)	1.28 (45.1)
MC-4500 End Cap	MC4500IEPP	892 x 2291 x 1509 (35.1 x 90.2 x 59.4)	40.8 (90)	1.12 (39.5)	3.26 (115.3)
MC-7200 End Cap	MC7200IEPP	892 x 2291 x 1509 (35.1 x 90.2 x 59.4)	40.8 (90)	1.12 (39.5)	3.26 (115.3)

# Retention/Detention

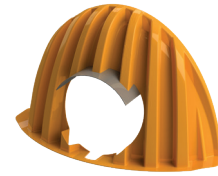
## Fabricated End Cap

### Bottom Inlet



**SC-310 Welded Stub**

Size	Type	Diameter mm (in)	Product Code
SC-310	Pre-cut	100 (4)	SC310EPE04BPC
	Pre-cut	150 (6)	SC310EPE06BPC
	Pre-cut	200 (8)	SC310EPE08BPC
	Pre-cut	250 (10)	SC310EPE10BPC
DC-780	Pre-cut	150 (6)	SC740EPE06BPC
	Pre-cut	200 (8)	SC740EPE08BPC
	Pre-cut	250 (10)	SC740EPE10BPC
	Pre-cut	300 (12)	SC740EPE12BPC
	Pre-cut	375 (15)	SC740EPE15BPC
SC-800	Pre-cut	450 (18)	SC740EPE18BPC
	Pre-cut	150 (6)	SC800EPE06BPC
	Pre-cut	200 (8)	SC800EPE08BPC
	Pre-cut	250 (10)	SC800EPE10BPC
	Pre-cut	300 (12)	SC800EPE12BPC
	Pre-cut	375 (15)	SC800EPE15BPC
	Pre-cut	450 (18)	SC800EPE18BPC



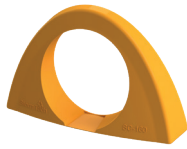
**MC-3500 Welded Crown Plate**

Size	Type	Diameter mm (in)	Product Code
MC-3500	Partial cut	150 (6)	MC3500IEPP06B
	Partial cut	200 (8)	MC3500IEPP08B
	Partial cut	250 (10)	MC3500IEPP10B
	Partial cut	300 (12)	MC3500IEPP12B
	Partial cut	375 (15)	MC3500IEPP15B
	Full cut welded crown plate	450 (18)	MC3500IEPP18BC
	Full cut welded crown plate	600 (24)	MC3500IEPP24BC
	Full cut welded crown plate	30 (750)	MC3500IEPP30BC
	End cap with welded pipe stub	450 (18)	MC3500IEPP18BW
	End cap with welded pipe stub	600 (24)	MC3500IEPP24BW
MC-4500 & MC-7200	Partial cut	150 (6)	MC4500IEPP06B
	Partial cut	200 (8)	MC4500IEPP08B
	Partial cut	250 (10)	MC4500IEPP10B
	Partial cut	300 (12)	MC4500IEPP12B
	Partial cut	375 (15)	MC4500IEPP15B
	Partial cut	450 (18)	MC4500IEPP18B
	Partial cut	600 (24)	MC4500IEPP24B
	End cap with welded pipe stub	450 (18)	MC4500IEPP18BW
	End cap with welded pipe stub	600 (24)	MC4500IEPP24BW
	End cap with welded pipe stub	750 (30)	MC4500IEPP30BW
End cap with welded pipe stub	900 (36)	MC4500IEPP36BW	
End cap with welded pipe stub	1050 (42)	MC4500IEPP42BW	

# Retention/Detention

## Fabricated End Cap

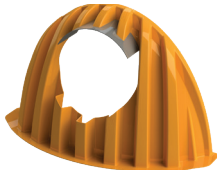
### Top Inlet



SC-160



SC-310 Welded Stub



MC-3500 Welded Crown Plate



MC-3500 Pre-Cut

Size	Type	Diameter mm (in)	Product Code
SC-160	Molded	200 (8)	SC160IEPP08
SC-310	Pre-cut	150 (6)	SC310EPE06TPC
	Pre-cut	200 (8)	SC310EPE08TPC
	Pre-cut	250 (10)	SC310EPE10TPC
DC-780	Pre-cut	450 (18)	SC740EPE18TPC
SC-800	Pre-cut	150 (6)	SC800EPE06TPC
	Pre-cut	200 (8)	SC800EPE08TPC
	Pre-cut	250 (10)	SC800EPE10TPC
	Pre-cut	300 (12)	SC800EPE12TPC
	Pre-cut	375 (15)	SC800EPE15TPC
	Pre-cut	450 (18)	SC800EPE18TPC
MC-3500	Partial cut	150 (6)	MC3500IEPP06T
	Partial cut	200 (8)	MC3500IEPP08T
	Partial cut	250 (10)	MC3500IEPP10T
	Partial cut	300 (12)	MC3500IEPP12T
	Partial cut	375 (15)	MC3500IEPP15T
	Full cut welded crown plate	450 (18)	MC3500IEPP18TC
	Full cut welded crown plate	600 (24)	MC3500IEPP24TC
	End cap with welded pipe stub	450 (18)	MC3500IEPP18TW
End cap with welded pipe stub	600 (24)	MC3500IEPP24TW	
MC-4500 & MC-7200	Partial cut	150 (6)	MC4500IEPP06T
	Partial cut	200 (8)	MC4500IEPP08T
	Partial cut	250 (10)	MC4500IEPP10T
	Partial cut	300 (12)	MC4500IEPP12T
	Partial cut	375 (15)	MC4500IEPP15T
	Partial cut	450 (18)	MC4500IEPP18T
	Partial cut	600 (24)	MC4500IEPP24T
	End cap with welded pipe stub	450 (18)	MC4500IEPP18TW
	End cap with welded pipe stub	600 (24)	MC4500IEPP24TW

### EZ End Caps



SC-310 EZ



SC-780 EZ



SC-800 EZ

Size	Type	Diameter mm (in)	Product Code
SC-310	EZ	300 (12)	SC310ECEZ
DC-780	EZ	600 (24)	SC740ECEZ
SC-800	EZ	600 (24)	SC800ECEZ



### FLAMPS

For Use With Chamber	Product Code
MC Series Chamber	MCFLAMP
SC-800 and DC-780	SC74024RAMP
SC-310	SC31012RAMP

# Retention/Detention

StormTech 90° Bends, Size-On-Size Single Manifolds



## SC-310 90° Bends

Diameter mm (in)	Product Code
200 (8)	0898AN31
300 (12)	1298AN31



## SC-310

Diameter mm (in)	Product Code
200 (8)	0851AN3108
300 (12)	1251AN3112

## SC-800/DC-780 90° Bends

Diameter mm (in)	Product Code
300 (12)	1298AN74
375 (15)	1598AN74
450 (18)	1898AN74
600 (24)	2498AN74
600 (24)	2498ANL74

## SC-800/DC-780

Diameter mm (in)	Product Code
300 (12)	1251AN7412
375 (15)	1551AN7415
450 (18)	1851AN7418
600 (24)	2451AN7424
600 (24)	2451ANL7424

## MC-3500 90° Bends

Diameter mm (in)	Product Code
300 (12)	1298AN3512
375 (15)	1598AN3515
450 (18)	1898AN3518
600 (24)	2498AN3524
600 (24)	2498ANL3524

## MC-3500

Diameter mm (in)	Product Code
300 (12)	1251AN3512
375 (15)	1551AN3515
450 (18)	1851AN3518
600 (24)	2451AN3524
600 (24)	2451ANL3524

## MC-4500/MC-7200 90° Bends

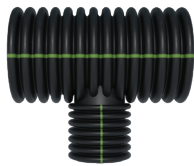
Diameter mm (in)	Product Code
300 (12)	1298AN4512
375 (15)	1598AN4515
450 (18)	1898AN4518
600 (24)	2498AN4524
600 (24)	2498ANL4524

## MC-4500/MC-7200

Diameter mm (in)	Product Code
300 (12)	1251AN4512
375 (15)	1551AN4515
450 (18)	1851AN4518
600 (24)	2451AN4524
600 (24)	2451ANL4524

# Retention/Detention

StormTech Reducing Single Manifold & FLAMP



## SC-310

Size mm (in)	Product Code
300 x 200 (12 x 8)	1251AN3108
450 x 200 (18 x 8)	1851AN3108
450 x 300 (18 x 12)	1851AN3112
600 x 200 (24 x 8)	2451AN3108
600 x 200 (24 x 8)	2451ANL3108
600 x 300 (24 x 12)	2451AN3112
600 x 300 (24 x 12)	2451ANL3112



## MC-3500

Size mm (in)	Product Code
750 x 600 (30 x 24)	3051AN3524
750 x 600 (30 x 24)	3051ANL3524
900 x 600 (36 x 24)	3651AN3524
1050 X 600 (42 x 24)	4251AN3524
1200 x 600 (48 x 24)	4851AN3524
1200 x 600 (48 x 24)	4851ANL3524

## SC-800/DC-780

Size mm (in)	Product Code
600 x 375 (24 x 15)	2451AN7415
600 x 375 (24 x 15)	2451ANL7415
600 x 600 (24 x 24)	2451AN7424
600 x 600 (24 x 24)	2451ANL7424
750 x 375 (30 x 15)	3051AN7415
750 x 600 (30 x 24)	3051AN7424
750 x 600 (30 x 24)	3051ANL7424
900 x 375 (36 x 15)	3651AN7415
900 x 600 (36 x 24)	3651AN7424
1050 X 375 (42 x 15)	4251AN7415
1050 X 600 (42 x 24)	4251AN7424
1050 X 600 (42 x 24)	4251ANL7424
1200 x 375 (48 x 15)	4851AN7415
1200 x 600 (48 x 24)	4851AN7424

## MC-4500/MC-7200

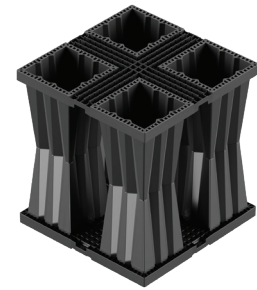
Size mm (in)	Product Code
750 x 600 (30 x 24)	3051AN4524
750 x 600 (30 x 24)	3051ANL4524
900 x 600 (36 x 24)	3651AN4524
900 x 600 (36 x 24)	3651ANL4524
1050 X 600 (42 x 24)	4251AN4524
1050 X 600 (42 x 24)	4251ANL4524
1200 x 600 (48 x 24)	4851AN4524
1200 x 600 (48 x 24)	4851ANL4524

# Retention/Detention

## Aquabox, Rainwater Harvesting

### Aquabox

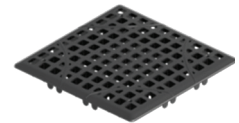
Description	Dimensions mm (in.)	Product Code
Aquabox HP	750 x 750 x 800 (29.5 x 29.5 x 31.5)	EDAQUFV1540
Aquabox HP Cube	750 x 750 x 225 (29.5 x 29.5 x 9)	EDAQUBCV200
Sidewall Grid HP	750 x 750 x 32.5 (29.5 x 29.5 x 1.3)	EDAQSWG033
Sidewall Grid Cube HP	750 x 300 x 25 (29.5 x 12 x 1)	EDAQSWG026
Top Cap	280 x 280 x 25 (11.2 x 11.2 x 1)	EDAQTOCV024
Cube Top Cap	284 x 284 x 15 (11.2 x 11.2 x 0.6)	EDACTOCV024
Double Joint Fastener	117.5 x 70 x 70 (4.7 x 2.8 x 2.8)	EDAQDOJ0070
Single Joint Fastener	117.5 x 70 x 35 (4.7 x 2.8 x 1.4)	EDAQJOI0035
D4 Cap HP	400 (16)	EDAQCCDV400
Half Base	750 x 375 x 50 (29.5 x 14.75 x 2)	EDAQBHB3775
Half Grid	750 x 350 x 40 (29.5 x 13.75 x 1.5)	EDAQHSB0035



**Aquabox HP**



**Sidewall Grid**

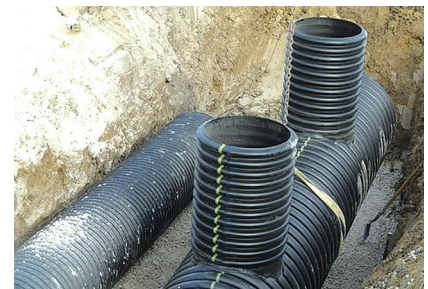


**Top Cap**

### Water Harvesting Cisterns\*

Description	Diameter mm (in.)	Length m (ft.)	Capacity L (gal)
N-12	900 (36)	6 (20)	2,790 (737)
	1050 (42)	6 (20)	4,100 (1,083)
	1200 (48)	6 (20)	5,636 (1,489)
	1500 (60)	6 (20)	9,384 (2,479)
HP Storm	900 (36)	12 (40)	5,591 (1,477)
		18 (60)	8,385 (2,215)
	1050 (42)	12 (40)	8,199 (2,169)
		18 (60)	12,318 (3,254)
	1200 (48)	12 (40)	11,288 (2,982)
		18 (60)	16,936 (4,474)
	1500 (60)	12 (40)	18,798 (4,966)
		18 (60)	28,198 (7,449)

\* Rainwater Harvesting units are custom made, therefore no standard product codes are available.



**N-12 Water Harvesting Cistern**



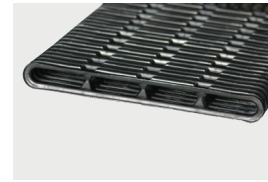
**HP Storm Water Harvesting Cistern**

# Panel Pipe

AdvanEdge®

## Pipe

Pipe Diameter in (mm)	Length ft. (m)	Description	Product Code
300 (12)	100 (30.5)	No Fabric	04900100
		4.0 oz. Spunbond	04930100



## Fittings

Pipe Size in (mm)	Fitting Description	Product Code
300 (12)	Snap End Cap	1432AA
300 (12)	External Snap Coupler	1411AA
300 (12)	Wye (Horizontal)	1480AA
300 (12)	4" (100 mm) End Outlet	1472AA
300 (12)	Side Outlet	1471AA
100 (4)	4" (100 mm) Flat Outlet	1473AA
300 (12)	Fabricated Tee (Vertical)	1460AN
300 (12)	Fabricated Tee (Horizontal)	1460ANH
300 (12)	Fabricated Tee with Side Outlet	1464ANH
300 (12)	Fabricated Cross Tee (Horizontal)	1436ANH
300 (12)	Fabricated Wye (Vertical)	1480AN
300 (12)	Fabricated Cross Wye (Horizontal)	1438ANH
300 (12)	Fabricated 45° Bend (Vertical)	1494AN
300 (12)	Fabricated 45° Bend (Horizontal)	1494ANH
300 (12)	Fabricated 90° Bend (Vertical)	1498AN
300 (12)	Fabricated 90° Bend (Horizontal)	1498ANH

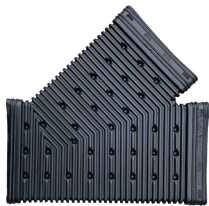


1432AA



1411AA

**NOTE:** AN and ANH part numbers require an external snap coupler (1411AA).



1480AA



1472AA



1471AA



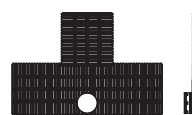
1473AA



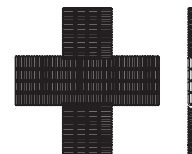
1460AN



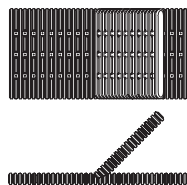
1460ANH



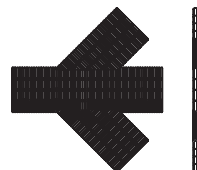
1464ANH



1436ANH



1480AN



1438ANH

# Stormwater Treatment

## Filters, Green Infrastructure

### BayFilter® Stormwater Media Filters

Model	Diameter mm (in)	Treatment Flow Rate L/sec (gpm)	Treatment Volume m³ (ft³)	Filter Surface Area m² (ft²)	Product Code
BayFilter 522	711 (28)	22.5 (1.42)	35.4 (1250)	4.2 (45)	BAYFLTR-522
BayFilter 530	711 (28)	30 (1.89)	70.8 (2500)	8.4 (90)	BAYFLTR-530
BayFilter 545	711 (28)	45 (2.84)	70.8 (2500)	8.4 (90)	BAYFLTR-545
BayFilter 622	711 (28)	22.5 (1.42)	35.4 (1250)	4.2 (45)	BAYFLTR-622
BayFilter 630	711 (28)	30 (1.89)	70.8 (2500)	8.4 (90)	BAYFLTR-630
BayFilter 645	711 (28)	45 (2.84)	70.8 (2500)	8.4 (90)	BAYFLTR-645



### EcoStream™ BioFilter

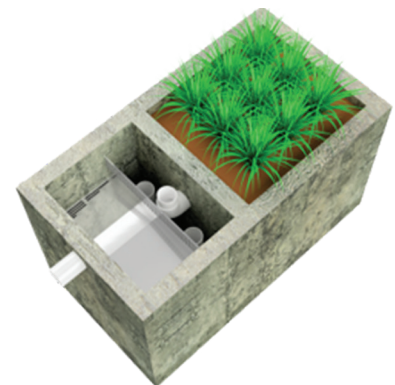
Model	Treatment Rate L/s (cfs)*	Mass Capture Capacity kg (lb)	Sample Configuration m (ft)
ES16	4.2 (0.147)	123 (271)	1.2 x 1.2 (4 x 4)
ES24	6.3 (0.221)	185 (407)	1.2 x 1.8 (4 x 6)
ES32	8.3 (0.294)	246 (542)	1.2 x 2.4 (4 x 8)
ES36	9.4 (0.331)	277 (610)	1.8 x 1.8 (6 x 6)
ES40	10.4 (0.368)	308 (678)	1.2 x 3.0 (4 x 10)
ES48	12.5 (0.441)	369 (813)	1.2 x 3.7 (4 x 12) 1.8 x 2.4 (6 x 8)
ES60	15.6 (0.551)	461 (1016)	1.8 x 3.0 (6 x 10)
ES72	18.7 (0.662)	553 (1220)	1.8 x 3.6 (6 x 12)
ES80	20.8 (0.735)	615 (1355)	2.4 x 3.0 (8 x 10)
ES96	25.0 (0.882)	738 (1626)	2.4 x 3.6 (8 x 12)
ES112	29.1 (1.029)	860 (1897)	2.4 x 4.2 (8 x 14)
ES128	33.3 (1.176)	983 (2168)	2.4 x 4.8 (8 x 16)



\* Based on NJCAT/DEP filtration testing protocol.

### EcoPure BioFilter®

Model	Treatment Rate L/s (cfs)	Mass Capture Capacity kg (lb)
EcoPure 60	3.8 (0.134)	88 (194)
EcoPure 120	7.6 (0.27)	176 (389)
EcoPure 180	11.3 (0.4)	264 (583)
EcoPure 240	15.0 (0.53)	353 (778)
EcoPure 360	22.7 (0.8)	529 (1166)



# Stormwater Treatment

## Separators

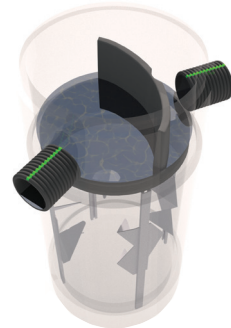
### Arcadia™ Stormwater Separator

Model	Manhole Diameter mm (in)	NJDEP (50% removal) cfs (L/s)
AR3	914 (36)	26.9 (0.95)
AR4	1219 (48)	47.5 (1.68)
AR5	1524 (60)	74.4 (2.63)
AR6	1829 (72)	107.0 (3.78)
AR8	2438 (96)	190.2 (6.72)
AR10	3048 (120)	297.3 (10.5)



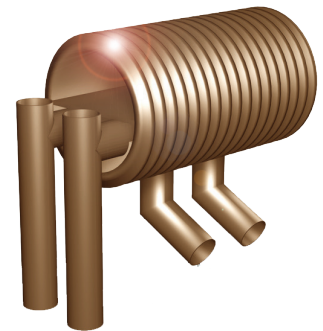
### Barracuda Max Stormwater Separator

Model	Manhole Diameter mm (in)	NJDEP (50% removal)	OK-100 (80% removal)
S3	900 (36)	24.1 (0.85)	24.1 (0.85)
S4	1,200 (48)	43.0 (1.52)	43.0 (1.52)
S6	1,800 (72)	96.2 (3.40)	96.8 (3.42)
S8	2,400 (96)	172.2 (6.08)	172.2 (6.08)



### BaySeparator Stormwater Treatment System

Model	Manhole Diameter mm (in)	Manhole Depth m (ft)	Maximum Treatment Rate L/s (cfs)	Maximum Hydraulic Rate L/s (cfs)	Product Code
BayFilter ½K	1,219 (48)	1.8 (6)	31.4 (1.1)	241 (8.5)	BAYSEP00500
BayFilter 1K	1,219 (48)	2.4 (8')	68 (2.4)	283 (10)	BAYSEP01000
BayFilter 3K	1,524 (60)	2.4 (8)	221 (7.8)	850 (30)	BAYSEP03000
BayFilter 5K	1,829 (72)	2.4 (8)	314 (11.1)	1,416 (50)	BAYSEP05000
BayFilter 10K	3,048 (120)	2.4 (8)	617 (21.8)	2,832 (100)	BAYSEP10000
BayFilter XK	Custom	Custom	Custom	Custom	BAYSYSXK



# Stormwater Treatment

## FlexStorm Pure (Permanent) Inlet Filters

### Round

Clear Opening Dimensions mm (in)	Frame Material	FX Woven Bag	PCP Bag (+ Oil Pouch)
Small - 300-400 (12-16) diameter openings	Stainless	62SHDRFX	62SHDRPCP
Medium - up to 600 (24) diameter openings	Stainless	62MHDRFX	62MHDRPCP
Large (up to 900 (36) diameter openings)	Stainless	62LHDRFX	62LHDRPCP



### Rectangular

Clear Opening Dimensions mm (in)	Frame Material	FX Woven Bag	PCP Bag (+ Oil Pouch)
Small - 400 x 400 to 375 x 375 (12 x 12 to 15 x 15) openings or 1600 (64) perimeter	Stainless	62SHDFX	62SHDPCP
Medium - up to 600 x 600 (24 x 24) openings or 2400 (96) perimeter	Stainless	62MHDFX	62MHDPCP
Large - up to 900 x 600 (36 x 24) openings or 3000 (120) perimeter	Stainless	62LHDFX	62LHDPCP
XLarge - typical 2 piece set to fit up to 1200 x 900 (48 x 36) opening)	Stainless	62XLHDFX	62XLHDPCP



### Wall Mount for Open Throat Curb Inlets

Clear Opening Dimensions m (ft)	Frame Material	FX Woven Bag	PCP Bag (+ Oil Pouch)
Between 0.3-1.22 (1-4) curb openings (1 filter & mounting hardware)	Stainless	62HDWM1FX	62HDWM1PCP
Between 1.22-2.44 (4-8) or single wing basins (2 filters & mounting hardware)	Stainless	62HDWM2FX	62HDWM2PCP
Between 2.44-3.66 (8-12) or double wing basins (3 filters & mounting hardware)	Stainless	62HDWM3FX	62HDWM3PCP
Between 3.66-4.88 (12-16) or 4-sided basin flow (4 filters & mounting hardware)	Stainless	62HDWM4FX	62HDWM4PCP



### Replacement Bags\*

Bag Size (Round or Rectangle) mm (in.)	FX Woven Bag	PCP Bag (+ Oil Pouch)
Small-for 300-400 (12-16) round frames or up to 1600 (64) clear opening perimeter	62SRBFX	62SRBPCP
Medium-up to 600 (24) round frames or up to 2400 (96) clear opening perimeter	62MRBFX	62MRBPCP
Large-up to 900 (36) round frames or up to 3000 (120) clear opening perimeter	62LRBFX	62LRBPCP



### Replacement Oil Skimmer Pouches

Product	Product Code
Oil skimmer pouch with swivel hook/strap (20 per box)	62CTSB
Oil skimmer 75 x 850 mm (3 x 34) for wall mounts (30 per box)	62CTSB34



# Stormwater Treatment

## *FlexStorm Catch-It (Temporary) Inlet Filters*

### Round Inlet Filters with FX Woven Bag

Clear Opening Dimensions mm (in)	Frame Material	Product Number
Small - up to 300-400 (12-16) diameter openings	Zinc/Galvanized	62SRDFX
Medium - up to 600 (24) diameter openings	Zinc/Galvanized	62MRDFX
Large up to 900 (36) diameter openings	Zinc/Galvanized	62LRDFX



### Rectangular Inlet Filters with FX Woven Bag

Clear Opening Dimensions mm (in)	Frame Material	Product Number
Small - 300 x 300 to 400 x 400 (12 x 12 to 16 x 16) openings or 1600 (64) perimeter	Zinc/Galvanized	62SSQFX
Medium - up to 600 x 600 (24 x 24) openings or 2400 (96) perimeter	Zinc/Galvanized	62MSQFX
Large - up to 900 x 600 (36 x 24) openings or 3000 (120) perimeter	Zinc/Galvanized	62LSQFX
XLarge - typical 2 piece set to fit up to 1200 x 900 (48 x 36) opening)	Zinc/Galvanized	62XLSQFX



### Rectangular Curb Box with FX Woven Bag

Clear Opening Dimensions	Frame Material	Product Number
Small - 300 x 300 to 400 x 400 (12 x 12 to 16 x 16) openings or 1600 (64) perimeter	Zinc/Galvanized	62SCBFX
Medium - up to 600 x 600 (24 x 24) openings or 2400 (96) perimeter	Zinc/Galvanized	62MCBFX
Large - up to 900 x 600 (36 x 24) openings or 3000 (120) perimeter	Zinc/Galvanized	62LCBFX
XLarge - typical 2 piece set to fit up to 1200 x 900 (48 x 36) opening)	Zinc/Galvanized	62XLCBFX

# Stormwater Treatment

## FlexStorm Inlet Filters for Nyloplast Basins

### Round Pure (Permanent) Inlet Filters

Round Grate Sizes* mm (in)	FX Woven Bag	PCP Bag (+ Oil Pouch)
300 (12) Nyloplast Casting	6212NYFX	6212NYPCP
375 (15) Nyloplast Casting	6215NYFX	6215NYPCP
450 (18) Nyloplast Casting	6218NYFX	6218NYPCP
600 (24) Nyloplast Casting	6224NYFX	6224NYPCP
750 (30) Nyloplast Casting	6230NYFX	6230NYPCP



### Round Lite (Temporary) Inlet Filters

Round Grate Sizes* mm (in)	Product Number
300 (12) Nyloplast Casting	62LITENY12
375 (15) Nyloplast Casting	62LITENY15
450 (18) Nyloplast Casting	62LITENY18
600 (24) Nyloplast Casting	62LITENY24
750 (30) Nyloplast Casting	62LITENY30



\* ADS Inlet Filter framing is designed for standard and pedestrian grate castings. Dome Grates and Drop-In Grates require special hanger kit. When ordering for rectangular road and highway or curb inlets, the filters will sit in the base plate of the castings. Some of these base castings require a transition plate to adapt to the standard 300-450 mm (12-18) diameter ADS Inlet Filters. ADS customer service will identify the proper transition plates, which will ship with the inlet filter.

### Maintenance Tool

Product	Product Code
ADS Maintenance & Grate Removal Tool	62UMT

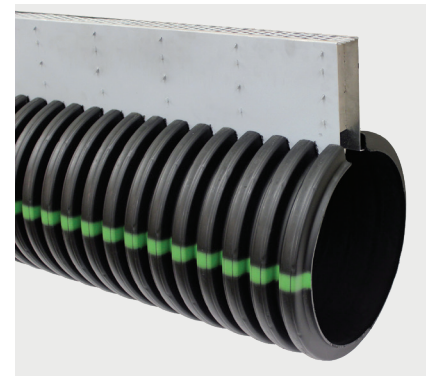


# Linear Drains

## Duraslot Slot Drain

### Pipe

Pipe Diameter mm (in)	Slot Height mm (in)	Product Code	
		Galvanized Grate*	Open Top Grate**
100 (4)	64 (2.5)	0420DS	0420DSOT
	150 (6)	0460DS	0460DSOT
	Variable (up to 600 (24) tall slot)	0490DS	0490DSOT
150 (6)	64 (2.5)	0620DS	0620DSOT
	150 (6)	0660DS	0660DSOT
	Variable (up to 600 (24) tall slot)	0690DS	0690DSOT
200 (8)	64 (2.5)	0820DS	0820DSOT
	150 (6)	0860DS	0860DSOT
	Variable (up to 600 (24) tall slot)	0890DS	0890DSOT
250 (10)	64 (2.5)	1020DS	1020DSOT
	150 (6)	1060DS	1060DSOT
	Variable (up to 600 (24) tall slot)	1090DS	1090DSOT
300 (12)	64 (2.5)	1220DS	1220DSOT
	150 (6)	1260DS	1260DSOT
	Variable (up to 600 (24) tall slot)	1290DS	1290DSOT
	Variable (600-900 (24-36) tall slot)	1290DSDT	1290DSDTOT
375 (15)	150 (6)	1560DS	1560DSOT
	Variable (up to 600 (24) tall slot)	1590DS	1590DSOT
	Variable (600-900 (24-36) tall slot)	1590DSDT	1590DSDTOT
450 (18)	150 (6)	1860DS	1860DSOT
	Variable (up to 600 (24) tall slot)	1890DS	1890DSOT
	Variable (600-900 (24-36) tall slot)	1890DSDT	1890DSDTOT
600 (24)	150 (6)	2460DS	2460DSOT
	Variable (up to 600 (24) tall slot)	2490DS	2490DSOT
	Variable (600-900 (24-36) tall slot)	2490DSDT	2490DSDTOT
750 (30)	150 (6)	3060DS	3060DSOT
	Variable (up to 600 (24) tall slot)	3090DS	3090DSOT
	Variable (600-900 (24-36) tall slot)	3090DSDT	3090DSDTOT
900 (36)	150 (6)	3660DS	3660DSOT
	Variable (up to 600 (24) tall slot)	3690DS	3690DSOT
	Variable (600-900 (24-36) tall slot)	3690DSDT	3690DSDTOT



\* Galvanized grate is ADS compliant and heel proof with 64% open area. Applications include: public street and highway, airports, loading docks, athletic facilities, parking lots and industrial floors.

\*\*Open top is no grate with 1% opening with 100% open area. Applications include: public street and highway.

# Linear Drains

## Duraslot Slot Drain

### Couplers\*

Pipe Diameter mm (in)	Fitting Compatible with Product Code	Product Code
100 (4)	0420DS	0421DS
	0460DS	0426DS
	0490DS	0491DS
150 (6)	0620DS	0621DS
	0660DS	0626DS
	0690DS	0691DS
200 (8)	0820DS	0821DS
	0860DS	0821DS
	0890DS	0891DS
250 (10)	1020DS	1021DS
	1060DS	1026DS
	1090DS	1091DS
300 (12)	1220DS	1221DS
	1260DS	1226DS
	1290DS/1290DSDT	1291DS
375 (15)	1560DS	1526DS
	1590DS/1590DSDT	1591DS
450 (18)	1860DS	1826DS
	1890DS/1890DSDT	1891DS
600 (24)	2460DS	2426DS
	2490DS/2490DSDT	2491DS
750 (30)	3060DS	3026DS
	3090DS/3090DSDT	3091DS
900 (36)	3660DS	3626DS
	3690DS/3690DSDT	3691DS



\* Coupler is needed for every Duraslot to Duraslot pipe or fabricated fitting connection.

ADS produces Duraslot elbows with typical bends (11.25°, 22.5°, 45° and 90°). Tees are available as mainline tees (slot across the mainline's top), drop tees (stub faces downward) or three branch slot (slot on all three branches). All elbows and tees use part #990DS, but please indicate pipe diameter and indicate the elbow or tee needed in the description.

# Linear Drains

## Duraslot Slot Drain

### End Caps

Pipe Diameter mm (in)	Fitting Compatible with Product Code	Product Code
100 (4)	0420DS/0460DS	0433DS
	0490DS	0493DS
150 (6)	0620DS/0660DS	0633DS
	0690DS	0693DS
200 (8)	0820DS/0860DS	0833DS
	0890DS	0893DS
250 (10)	1020DS/1060DS	1033DS
	1090DS	1093DS
300 (12)	1220DS/1260DS	1233DS
	1290DS/1290DSDT	1293DS
375 (15)	1560DS	1533DS
	1590DS/1590DSDT	1593DS
450 (18)	1860DS	1833DS
	1890DS/1890DSDT	1893DS
600 (24)	2460DS	2433DS
	2490DS/2490DSDT	2493DS
750 (30)	3060DS	3033DS
	3090DS/3090DSDT	3093DS
900 (36)	3660DS	3633DS
	3690DS/3690DSDT	3693DS



### Adapters

Pipe Diameter mm (in)	Fitting Compatible with Product Code	Product Code
100 (4)	0420DS/0460DS	0462DS
	0490DS	0496DS
150 (6)	0620DS/0660DS	0662DS
	0690DS	0696DS
200 (8)	0820DS/0860DS	0862DS
	0890DS	0896DS
250 (10)	1020DS/1060DS	1062DS
	1090DS	1096DS
300 (12)	1220DS/1260DS	1262DS
	1290DS/1290DSDT	1296DS
375 (15)	1560DS	1562DS
	1590DS/1590DSDT	1596DS
450 (18)	1860DS	1862DS
	1890DS/1890DSDT	1896DS
600 (24)	2460DS	2462DS
	2490DS/2490DSDT	2496DS
750 (30)	3060DS	3062DS
	3090DS/3090DSDT	3096DS
900 (36)	3660DS	3662DS
	3690DS/3690DSDT	3696DS



\* Adapter is needed to transition from Duraslot to N-12, HP Storm and any concrete structure.

# Linear Drains

## Duraslot Slot Drain

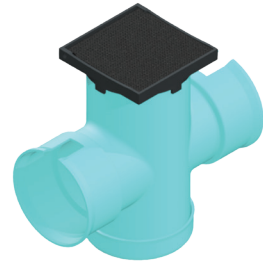
### Nyloplast Tee for Duraslot Clean Out\*

Product Description mm (in)	Product Code
300 (12) Tee with 300 (12) Solid Cover	1265AGDS
375 (15) Tee with 300 (12) Solid Cover	1565AGDS
450 (18) Tee with 300 (12) Solid Cover	1865AGDS
600 (24) Tee with 300 (12) Solid Cover	2465AGDS



### Nyloplast Basin for Duraslot Clean Out\*

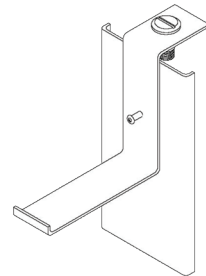
Product Description mm (in)	Product Code
300 (12) Basin with 300 (12) Solid Cover	2812AG3
375 (15) Basin with 300 (12) Solid Cover	2815AG3
450 (18) Basin with 300 (12) Solid Cover	2818AG3
600 (24) Basin with 300 (12) Solid Cover	2824AG3



### Duraslot Grate Anchors

Product Description mm (in)	Product Code
For 100 (4) Duraslot with 64 (2.5) Slot Height	GASDS
For 150-300 (6-12) Duraslot with 64 (2.5) Slot Height	GAMDS
For 100-900 (4-36) Duraslot with 150 (6) Slot Height	GALDS

\* For each Duraslot to Nyloplast connection, please quote a grate anchor.



# Linear Drains

## Duraslot XL Trench Drain

### Pipe

Diameter mm (in)	Slot Height mm (in)	Product Code
150 (6)	64 (2.5)	0620DSXL
	150 (6)	0660DSXL
	Variable (up to 600 (24) tall slot)	0690DSXL
200 (8)	64 (2.5)	0820DSXL
	150 (6)	0860DSXL
	Variable (up to 600 (24) tall slot)	0890DSXL
250 (10)	64 (2.5)	1020DSXL
	150 (6)	1060DSXL
	Variable (up to 600 (24) tall slot)	1090DSXL
300 (12)	64 (2.5)	1220DSXL
	150 (6)	1260DSXL
	Variable (up to 600 (24) tall slot)	1290DSXL
	Variable (600-900 (24-36) tall slot)	1290DSDTXL
375 (15)	150 (6)	1560DSXL
	Variable (up to 600 (24) tall slot)	1590DSXL
	Variable (600-900 (24-36) tall slot)	1590DSDTXL
450 (18)	150 (6)	1860DSXL
	Variable (up to 600 (24) tall slot)	1890DSXL
	Variable (600-900 (24-36) tall slot)	1890DSDTXL
600 (24)	150 (6)	2460DSXL
	Variable (up to 600 (24) tall slot)	2490DSXL
	Variable (600-900 (24-36) tall slot)	2490DSDTXL
750 (30)	150 (6)	3060DS
	Variable (up to 600 (24) tall slot)	3090DSXL
	Variable (600-900 (24-36) tall slot)	3090DSDTXL
900 (36)	150 (6)	3660DSXL
	Variable (up to 600 (24) tall slot)	3690DSXL
	Variable(600-900 (24-36) tall slot)	3690DSDTXL



# Linear Drains

## Duraslot XL Trench Drain

### Grates\*

Grate Type mm (in)	Product Code
125 x 500 (5 x 20) Standard	0520XLDIS
125 x 500 (5 x 20) Pedestrian	0520XLDIW

\* Grates fit all diameters of Duraslot XL pipe.



Standard Grate



Pedestrian Grate

### Couplers\*\*

Pipe Diameter mm (in)	Fitting Compatible with Product Code	Product Code
150 (6)	0620DSXL/0660DSXL/0690DSXL	0691DSXL
200 (8)	0820DSXL/0860DSXL/0890DSXL	0891DSXL
250 (10)	1020DSXL/1060DSXL/1090DSXL	1091DSXL
300 (12)	1220DSXL/1260DSXL/ 1290DSXL	1291DSXL
375 (15)	1560DSXL/1590DSXL	1591DSXL
450 (18)	1860DSXL/1890DSXL	1891DSXL
600 (24)	2460DSXL/2490DSXL	2491DSXL
750 (30)	3060DSXL/3090DSXL	3091DSXL
900 (36)	3660DSXL/3690DSXL	3691DSXL



\*\* Coupler is needed for every Duraslot to Duraslot pipe or fabricated fitting connection.

ADS produces Duraslot elbows with typical bends (11.25°, 22.5°, 45° and 90°). Tees are available as mainline tees (slot across the mainline's top), drop tees (stub faces downward) or three branch slot (slot on all three branches). All elbows and tees use part #990DS, but please indicate pipe diameter and indicate the elbow or tee needed in the description.

# Linear Drains

## Duraslot XL Trench Drain

### End Caps

Pipe Diameter mm (in)	Fitting Compatible with Product Code	Product Code
150 (6)	0620DSXL/0660DSXL	0633DSXL
	0690DSXL	0693DSXL
200 (8)	0820DSXL/0860DSXL	0833DSXL
	0890DSXL	0893DSXL
250 (10)	1020DSXL/1060DSXL	1033DSXL
	1090DSXL	1093DSXL
300 (12)	1220DSXL/1260DSXL	1233DSXL
	1290DSXL	1293DSXL
375 (15)	1560DSXL	1533DSXL
	1590DSXL	1593DSXL
450 (18)	1860DSXL	1833DSXL
	1890DSXL	1893DSXL
600 (24)	2460DSXL	2433DSXL
	2490DSXL	2493DSXL
750 (30)	3060DSXL	3033DSXL
	3090DSXL	3093DSXL
900 (36)	3660DSXL	3633DSXL
	3690DSXL	3693DSXL



### Adapters

Pipe Diameter mm (in)	Fitting Compatible with Product Code	Product Code
150 (6)	0620DSXL/0660DSXL	0662DSXL
	0690DSXL	0696DSXL
200 (8)	0820DSXL/0860DSXL	0862DSXL
	0890DSXL	0896DSXL
250 (10)	1020DSXL/1060DSXL	1062DSXL
	1090DSXL	1096DSXL
300 (12)	1220DSXL/1260DSXL	1262DSXL
	1290DSXL	1296DSXL
375 (15)	1560DSXL	1562DSXL
	1590DSXL	1596DSXL
450 (18)	1860DSXL	1862DSXL
	1890DSXL	1896DSXL
600 (24)	2460DSXL	2462DSXL
	2490DSXL	2496DSXL
750 (30)	3060DSXL	3062DSXL
	3090DSXL	3096DSXL
900 (36)	3660DSXL	3662DSXL
	3690DSXL	3696DSXL



\* Adapter is needed to transition from Duraslot to N-12, HP Storm and any concrete structure.

# Onsite Wastewater Systems

## Arc & Biodiffuser Chambers & Accessories

### Arc Chambers\*



Arc 18



Arc 24



Arc 36



Arc 36HC



Arc 36LP

Type	Dimensions L x W x H mm (in)	Capacity m <sup>3</sup> (ft <sup>3</sup> )	Product Code
Arc 18	1,702 x 406 x 300 (67 x 16 x 12)	0.10 (3.42)	1812BD
Arc 24	1,702 x 572 x 300 (67 x 22.5 x 12)	0.14 (5.02)	2412BD
Arc 36	1,600 x 876 x 330 (63 x 34.5 x 13)	0.23 (8.0)	3613BD3
Arc 36HC	1,600 x 876 x 400 (63 x 34.5 x 16)	0.30 (10.7)	3616BD3
Arc 36LP	1,600 x 864 x 200 (63 x 34 x 8)	0.17 (5.84)	3608BD

\* All Arc chambers have a load rating of H-10.

### Arc End Caps, Port Couplers, Splash Plate



End Cap



Side Port Coupler

Type	Product Code
Arc 18 End Cap	1802BD
Arc 24 End Cap	2402BD
Arc 36HC End Cap	3606BD2
Arc 36LP End Cap	3624LPEC
Arc 24 Side Port Coupler	2403BD
Arc 36 Side Port Coupler	3604BD
Arc 36HC Side Port Coupler	3607BD
End Cap Splash Plate	0068BD

# Onsite Wastewater Systems

## Biodiffuser Chambers/Accessories & Septic Stack

### Biodiffuser Chambers



1600BD



1620BD

Type mm (in)	Load Rating	Dimensions L x W x H mm (in)	Capacity m <sup>3</sup> (ft <sup>3</sup> )	Product Code
400 (16) Hi Capacity	H-10	1,930 x 863 x 400 (76 x 34 x 16)	0.39 (13.6)	1600BD
400 (16) Hi Capacity	H-20	1,930 x 863 x 400 (76 x 34 x 16)	0.39 (13.6)	1620BD

### Biodiffuser End Caps, Angle Section



1601BD



1622BD

Type mm (in)	Product Code
400 (16) End Cap	1601BD
400 (16) Angle Section 0-22°	1622BD

### Septic Stack Systems



9 Pipe Septic Stack

Description mm (in)	Nominal Length m (ft)	Product Code
100 (4) Perforated 9 Pipe	3 (10)	04710090
100 (4) Perforated 11 Pipe	3 (10)	04710110
100 (4) Perforated 13 Pipe	3 (10)	04710130
3611 System of 100 (4) Perforated Pipe	3 (10)	04710110
3613 System of 100 (4) Perforated Pipe	3 (10)	04710130

# Onsite Wastewater Systems

## Accessories

### Distribution Boxes

Description	Product Code
Multi-Purpose Regular Distribution Box	1369AB
Multi-Purpose Hillside Distribution Box	1370AB
Regular Distribution Box Plug	1379AB
Hillside Distribution Box Plug	1380AB



1369AB



1370AB

### Bull Run Valve



Description mm (in)	Product Code
Bull Run Valve with 600 (24) Key	4182FG



### Sewage Ejector Sump

Description mm (in)	Product Code
Lid Kit for Sewage Ejector Sump and Radon Vented Sump	1530ADLX



# Foundation Drainage

## Sump Liners & Lids; Waterstop Gaskets

### Sump Liner

Description L (gal)	Dimensions mm (in)	Product Code
53 (14) Sump Liner	450 x 600 (18 x 24)	1524ADH
72 (19) Locking Sump Liner	450 x 750 (18 x 30)	1530ADH
53 (14) Radon Dual Purpose Vented Liner	450 x 600 (18 x 24)	1524ADR



1524ADH



1530ADH



1524ADR

### Sump Liner Lid

Description	Dimensions mm (in)	Product Code
Solid, Locking	450 (18)	1537ADL
Notched, Locking	450 (18)	1537ADNL
Center Notched, Locking	450 (18)	1537ADCNL



1537ADL



1537ADNL



1537ADCNL

### Waterstop Gaskets

Pipe Size mm (in)	Recommended Minimum Hole Diameter mm (in)	Minimum Distance Pipe Invert to Structure Invert mm (in)	Product Code
300 (12)	495 (19.50)	94 (3.7)	1202PS
375 (15)	584 (23.00)	102 (4.0)	1502PS
450 (18)	673 (26.50)	107 (4.2)	1802PS
600 (24)	845 (33.25)	114 (4.5)	2402PS
750 (30)	1,029 (40.50)	132 (5.2)	3002PS
900 (36)	1,194 (47.00)	140 (5.5)	3602PS
1050 (42)	1,346 (53.00)	146 (5.75)	4202PS
1200 (48)	1,499 (59.00)	146 (5.75)	4802PS
1350 (54)*	1,651 (65.00)	163 (6.4)	5402PS
1500 (60)	1,829 (72.00)	163 (6.4)	6002PS



\* Limited Geographic Availability.

# Geosynthetics

## Nonwoven

### Light Weight Civil



Weight oz (g)	Size width x length m (ft)	Roll Size m <sup>2</sup> (y <sup>2</sup> )	Product Code
3.0 (85)	0.91 x 109.7 (3.0' x 360)	100 (120)	0311TA
	1.2 x 109.7 (4.0' x 360)	134 (160)	0311TB
	1.9 x 109.7 (6.3' x 360)	250 (209)	0311TF
	2.3 x 109.7 (7.5' x 360)	300 (251)	0311TT
	3.8 x 109.7 (12.5' x 360)	500 (418)	0311TG
	4.6 x 109.7 (15.0' x 360)	600 (502)	0311TS
3.5 (99)	0.91 x 109.7 (3.0' x 360)	100 (120)	0351TA
	1.2 x 109.7 (4.0' x 360)	134 (160)	0351TB
	1.5 x 109.7 (5.0' x 360)	167 (200)	0351TD
	1.9 x 109.7 (6.3' x 360)	250 (209)	0351TF
	2.3 x 109.7 (7.5' x 360)	300 (251)	0351TT
	3.8 x 109.7 (12.5' x 360)	500 (418)	0351TG
	4.6 x 109.7 (15.0' x 360)	600 (502)	0351TS
4.0 (113)	0.91 x 109.7 (3.0' x 360)	100 (120)	0401TA
	1.2 x 109.7 (4.0' x 360)	134 (160)	0401TB
	1.5 x 109.7 (5.0' x 360)	167 (200)	0401TD
	1.9 x 109.7 (6.3' x 360)	250 (209)	0401TF
	2.3 x 109.7 (7.5' x 360)	300 (251)	0401TT
	3.8 x 109.7 (12.5' x 360)	500 (418)	0401TG
	4.6 x 109.7 (15.0' x 360)	600 (502)	0401TS
4.5 (128)	0.91 x 109.7 (3.0' x 360)	100 (120)	0451TA
	1.2 x 109.7 (4.0' x 360)	134 (160)	0451TB
	1.5 x 109.7 (5.0' x 360)	167 (200)	0451TD
	1.9 x 109.7 (6.3' x 360)	250 (209)	0451TF
	2.3 x 109.7 (7.5' x 360)	300 (251)	0451TT
	3.8 x 109.7 (12.5' x 360)	500 (418)	0451TG
	4.6 x 109.7 (15.0' x 360)	600 (502)	0451TS



# Geosynthetics

## Nonwoven

### Medium Weight Civil



Weight oz (g)	Size width x length m (ft)	Roll Size m <sup>2</sup> (y <sup>2</sup> )	Product Code
6.0 (170)	0.91 x 109.7 (3.0' x 360)	100 (120)	0601TA
	1.5 x 109.7 (5.0' x 360)	167 (200)	0601TD
	1.9 x 109.7 (6.3' x 360)	209 (250)	0601TF
	2.3 x 109.7 (7.5' x 360)	251 (300)	0601TT
	3.8 x 109.7 (12.5' x 360)	418 (500)	0601TG
	4.6 x 91.4 (15.0' x 300)	418 (500)	0601TS
7.0 (198)	1.5 x 109.7 (5.0' x 360)	167 (200)	0701TD
	1.9 x 109.7 (6.3' x 360)	209 (250)	0701TF
	2.3 x 109.7 (7.5' x 360)	251 (300)	0701TT
	3.8 x 109.7 (12.5' x 360)	418 (500)	0701TG
	4.6 x 91.4 (15.0' x 300)	418 (500)	0701TS
8.0 (227)	3.8 x 109.7 (12.5' x 360)	418 (500)	0801TG
	4.6 x 91.4 (15.0' x 300)	418 (500)	0801TS



### Heavy Weight



Weight oz (g)	Size width x length m (ft)	Roll Size m <sup>2</sup> (y <sup>2</sup> )	Product Code
10.0 (283)	4.6 x 91.4 (15.0' x 300)	418 (500)	1001TS
12.0 (340)	4.6 x 91.4 (15.0' x 300)	418 (500)	1201TS
16.0 (454)	4.6 x 91.4 (15.0' x 300)	418 (500)	1601TSS

### Environmental



Weight oz (g)	Size width x length m (ft)	Roll Size m <sup>2</sup> (y <sup>2</sup> )	Product Code
6.5 (184)	4.6 x 274 (15.0' x 900)	1,254 (1,500)	0651TS
8.0 (227)	4.6 x 210 (15.0' x 690)	962 (1,150)	0861TS
10.0 (283)	4.6 x 91.4 (15.0' x 300)	418 (500)	1071TS
12.0 (340)	4.6 x 146 (15.0' x 480)	669 (800)	1291TS

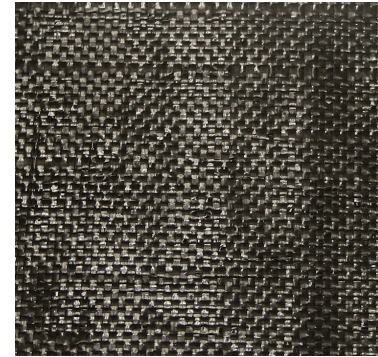
# Geosynthetics

## Woven

### Stabilization



Grab Tensile	Size width x length m (ft)	Roll Size m <sup>2</sup> (y <sup>2</sup> )	Product Code
200	3.8 x 131.7 (12.5' x 432)	502 (600)	200WTK
	4.6 x 109.7 (15.0' x 360)	502 (600)	200WTS
	5.3 x 94.2 (17.5' x 309)	502 (600)	200WTM
250	3.8 x 109.7 (12.5' x 360)	418 (500)	250WTK
	4.6 x 109.7 (15.0' x 360)	502 (600)	250WTS
	5.3 x 78.6 (17.5' x 258)	418 (500)	250WTM
315	3.8 x 109.7 (12.5' x 360)	418 (500)	315WTK
	4.6 x 91.4 (15' x 300)	418 (500)	315WTS
	5.3 x 78.6 (17.5' x 258)	418 (500)	315WTM
	3.8 x 109.7 (2.5' x 360)	418 (500)	315WTK



### Monofilament



Size width x length m (ft)	Roll Size m <sup>2</sup> (y <sup>2</sup> )	Product Code
3.6 x 91.4 (12.0' x 300)	334 (400)	104FWF
3.8 x 91.4 (12.5' x 300)	348 (417)	111FTKW
3.6 x 91.4 (12.0' x 300)	334 (400)	117FTK

### Medium



Size width x length m (ft)	Roll Size m <sup>2</sup> (y <sup>2</sup> )	Product Code
4.6 x 91.4 (15' x 300)	418 (500)	02X2HFTS
4.6 x 91.4 (15' x 300)	418 (500)	270HPTS
5.3 x 78.6 (17.5' x 258)	418 (500)	270HPTS
5.3 x 78.6 (17.5' x 258)	418 (500)	370HPTS
4.6 x 91.4 (15' x 300)	418 (500)	570HPTS

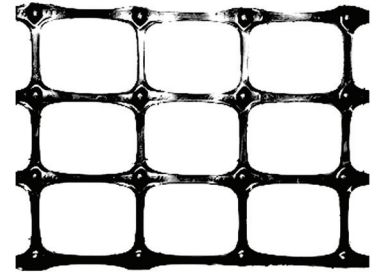
# Geosynthetics

## Geogrid, Paving Fabric & Silt Fence

### Biaxial



Size width x length m (ft)	Roll Size m <sup>2</sup> (y <sup>2</sup> )	Product Code
12.5' x 328' (3.8 x 100)	380 (455)	BX114
12.5' x 246' (3.8 x 75)	286 (342)	BX124
12.5' x 328' (3.8 x 100)	380 (455)	BX224
12.5' x 164' (3.8 x 50)	190 (228)	BX154
12.5' x 164' (3.8 x 50)	190 (228)	BX150
12.5' x 328' (3.8 x 100)	380 (455)	BX1515
12.5' x 164' (3.8 x 50)	190 (228)	BX374



### Paving Fabric



Size width x length m (ft)	Roll Size m <sup>2</sup> (y <sup>2</sup> )	Product Code
12.5' x 360' (3.8 x 109.7)	418 (500)	4598TG
15.0' x 360' (4.6 x 109.7)	502 (600)	4598TS
12.5' x 360' (3.8 x 109.7)	418 (500)	4599TG



### Silt Fence



Description m (ft)	Product Code
.6 x 30 (2' x 100) roll with 11 hardwood stakes	3301WE
.9 x 30 (3' x 100) roll with 11 hardwood stakes	3302WE
.9 x 30 (3' x 100) AASHTO M288 Silt Fence with 17 hardwood stakes	3302WP



3301WE



3301WP

# Geosynthetics

## Erosion Control Blankets, Turf Reinforcement Mat, Ground Protection

### Erosion Control Blanket



Size width x length m (ft)	Roll Size m <sup>2</sup> (y <sup>2</sup> )	Description	Product Code
2.4 x 34.3 (8' x 112.5)	84 (100)	Single Net Straw	OOS1TT
2.4 x 34.3 (8' x 112.5)	84 (100)	Double Net Straw	OOS2TT
2.4 x 34.3 (8' x 112.5)	84 (100)	Coconut/Straw	OCS2TT
2.4 x 34.3 (8' x 112.5)	84 (100)	100% Coconut	OOC2TT
2.4 x 34.3 (8' x 112.5)	84 (100)	Single net straw all natural	OOS1AN
2.4 x 34.3 (8' x 112.5)	84 (100)	Double net straw all natural	OOS2AN
2.4 x 34.3 (8' x 112.5)	84 (100)	Coconut/Straw all natural	OCS2AN
2.4 x 34.3 (8' x 112.5)	84 (100)	100% Coconut all natural	OOC2AN



OOS1TT,  
OOS2TT

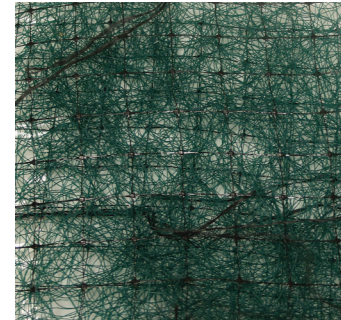


OOC2TT

### Long-Term Turf Reinforcement Mat



Size width x length m (ft)	Roll Size m <sup>2</sup> (y <sup>2</sup> )	Product Code
2.4 x 34.1 (8' x 112)	84 (100)	PP58GTR
2.4 x 34.1 (8' x 112)	84 (100)	PP510GTR
2.4 x 34.1 (8' x 112)	84 (100)	PP512GTR



### Permanent Turf Reinforcement Mat



Size width x length m (ft)	Roll Size m <sup>2</sup> (y <sup>2</sup> )	Product Code
2.4 x 41 (8' x 135)	100 (120)	PP5XGTR
2.4 x 41 (8' x 135)	100 (120)	PP5HD8GTR

### Fabric Pins



Size in (mm)	Quantity	Product Code
50 (6) Staple	1000/box	3206TP
300 (12) Pin	100/box	3212TP
450 (18) Pin	100/box	3218TP



### Ground Protection Mat



Size width x length m (ft)	Product Code
0.6 x 2.4 (2' x 8')	BAM28
1.2 x 2.4 (4' x 8')	BAM48



Pedestrian Side



Equipment Side

# Geosynthetics

## Septic Fabric

### Spunbond



Weight g (oz)	Size width x length m (ft)	Roll Size m <sup>2</sup> (y <sup>2</sup> )	Product Code
43 (1.5)	.9 x 91.4 (3.0' x 300)	84 (100)	3151TA
	1.2 x 91.4 (4.0' x 300)	111 (133)	3151TB
	1.9 x 91.4 (6.3' x 300)	174 (208)	3151TE
	3.8 x 91.4 (12.6' x 300)	351 (420)	3151TG
57 (2.0)	.9 x 91.4 (3.0' x 300)	84 (100)	3201TA
	1.9 x 91.4 (6.3' x 300)	174 (208)	3201TE
	1.2 x 91.4 (4.0' x 300)	111 (133)	3201TB
	3.8 x 91.4 (12.6' x 300)	351 (420)	3201TG
85 (3.0)	.9 x 91.4 (3.0' x 300)	84 (100)	3301TA
	1.2 x 91.4 (4.0' x 300)	111 (133)	3301TB
	1.9 x 91.4 (6.3' x 300)	174 (208)	3301TE
	3.8 x 91.4 (12.6' x 300)	351 (420)	3301TG
113 (4.0)	3.8 x 91.4 (12.6' x 300)	351 (420)	3401TG
170 (6.0)	1.2 x 91 (3.8' x 300)	351 (420)	3601TG



### Septic Fabric



Weight oz. (g)	Size width x length m (ft)	Roll Size m <sup>2</sup> (y <sup>2</sup> )	Product Code
0.5 (14)	.9 x 91.4 (3.0' x 300)	84 (100)	2636RB
	.9 x 457.2 (3.0' x 1500)	418 (500)	2736RB
	1.2 x 457.2 (4.0' x 1500)	558 (667)	2748RB
	1.5 x 457.2 (5.0' x 1500)	696 (833)	2760RB
	1.8 x 457.2 (6.0' x 1500)	836 (1,000)	2772RB
0.7 (20)	.9 x 91.4 (3.0' x 300)	84 (100)	2836RB
	.9 x 457.2 (3.0' x 1500)	418 (500)	2936RB
	1.2 x 457.2 (4.0' x 1500)	558 (667)	2948RB
	1.8 x 457.2 (6.0' x 1500)	836 (1,000)	2972RB









adspipe.ca

ADS Terms and Conditions of Sale are available on the ADS website, [www.adspipe.com](http://www.adspipe.com).  
Advanced Drainage Systems, the ADS logo, the Green Stripe, StormTech®, Inserta Tee®, Nyloplast®, Envirohood™, Flexstorm®, Catch-It®, Duraslot®, Arc™, Biodiffuser™, N-12®, SaniTite® HP, Mega Green™ and ADS PolyFlex™ are registered trademarks of Advanced Drainage Systems, Inc. Hickenbottom® is a registered trademark of Hickenbottom, Inc. Mar Mac® is a registered trademark of Mar Mac Construction Products Co., Inc.  
© 2026 Advanced Drainage Systems, Inc. #10524\_C 03/26 MH

