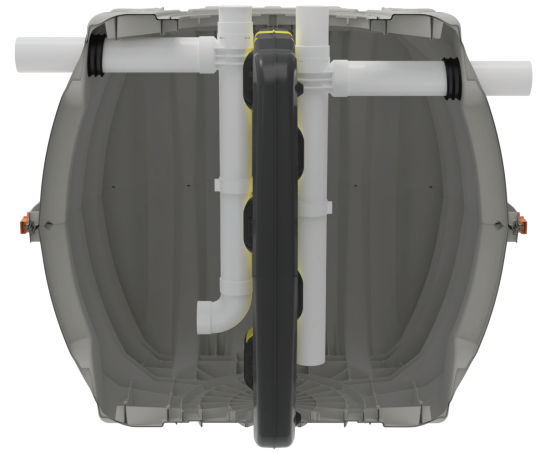


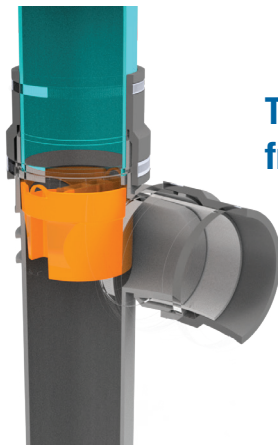
GIT-Tank

GIT-540 Grease Interceptor

The GIT-540 is Infiltrator's first hydromechanical grease interceptor certified under ASME A112.14.3-2022 and CSA B481.1:22. Engineered for high performance, its rated capacity is 97.9% and can hold up to 3,011 pounds of grease before its removal efficiency drops below 90%. This efficiency is achieved through a carefully designed system of components, including a flow control device, swept inlet tee, solids-tight baffle, and extended outlet tee. Constructed from durable, non-corrosive, fiberglass-filled polypropylene, the GIT-540 surpasses Infiltrator septic tanks in strength. For traffic-rated installations, it requires a select-fill, steel-reinforced concrete slab, Infiltrator's Cast Iron Lid and Pipe Adapter Ring, and a 24-inch dual-wall corrugated pipe (supplied separately). Compact yet highly efficient, the GIT-540 is an ideal solution for food service establishments that generate high volumes of grease but have limited space.

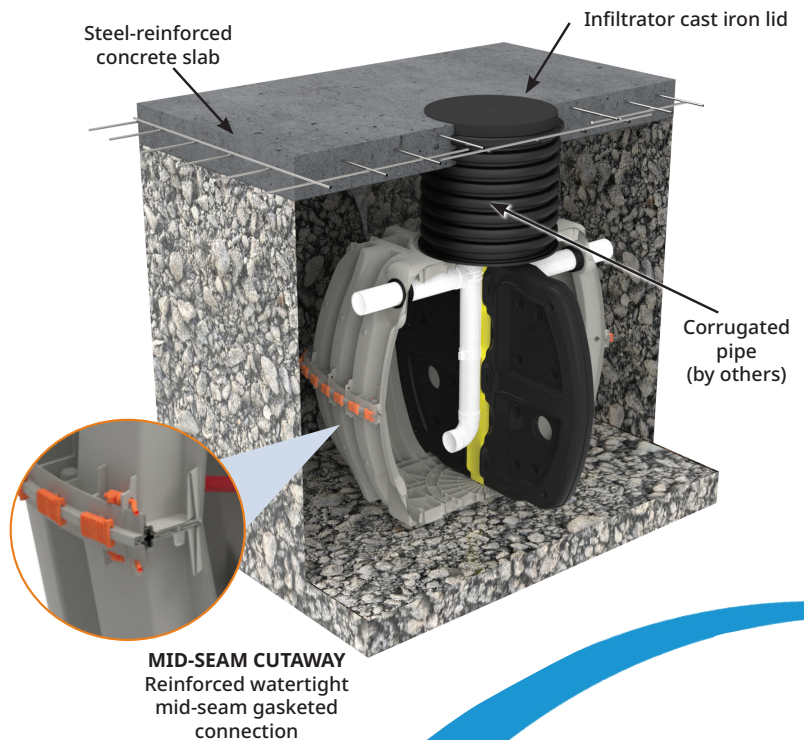


**FLOW
CONTROL
DEVICE**



Traps and separates fats, oils, and grease (FOG), preventing it from clogging wastewater infrastructure

GIT-540 TRAFFIC INSTALLATION



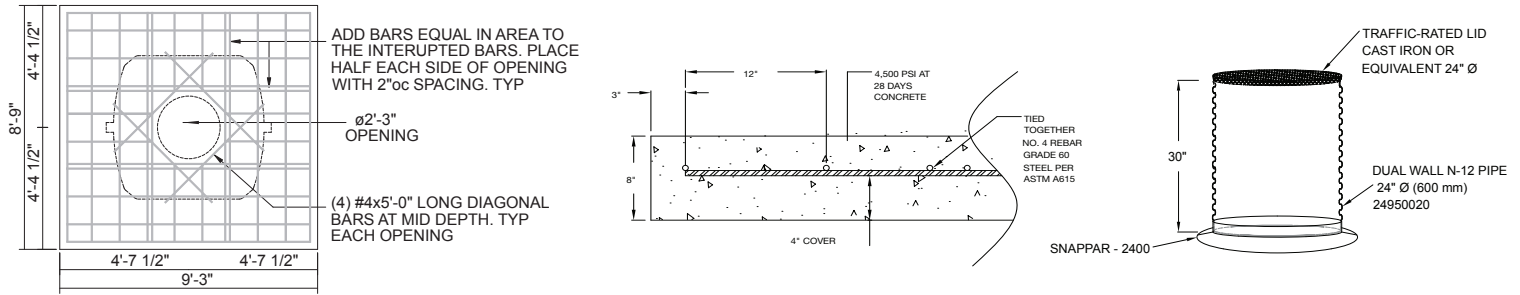
Benefits

- Certified as a hydromechanical grease interceptor under ASME A112.14.3.
- Efficiency At Rated Capacity: 97.9%, with a maximum grease capacity of 3,011 pounds (94.7% Overall Efficiency)
- Molded with fiberglass-filled polypropylene that increases durability while maintaining ideal corrosion resistance
- Lightweight thermoplastic design allows for quick and easy job site delivery and installation
- A continuous-loop gasketed mid-seam connection is secured by permanent clips producing a watertight seal between interceptor halves
- Burial depths can range between 6-inches and 48-inches depending on the installation type
- A solids-tight baffle creates a two-compartment interceptor that prevents fats, oils, and grease (FOG) from short-circuiting across the interceptor
- Traffic-rated (AASHTO H-20) installations require the use of a steel-reinforced concrete slab
- Traffic rated riser can be achieved with an Infiltrator cast iron lid, dual-wall corrugated pipe (by others), and Infiltrator's pipe adapter ring. Non-traffic rated installations may use Infiltrator's EZsnap risers

 **Infiltrator**[™]
Water Technologies
Part of 

infiltratorwater.com • (800) 221-4436

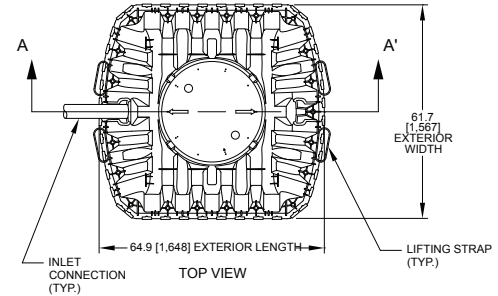
GIT-540 General Specifications and Illustrations



AASHTO H-20 TRAFFIC LOADING DESIGN REQUIREMENTS

Must be installed and backfilled in accordance with the Infiltrator Grease Interceptor General Installation Instructions

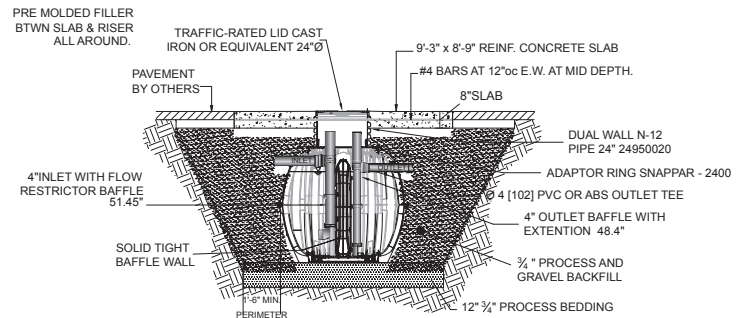
For shallow ground water conditions where buoyancy control is necessary reference the Infiltrator IM- and CM-Series Tank Buoyancy Control Guidance



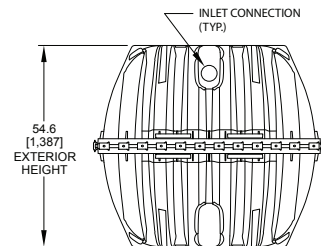
GIT-540	
Total Liquid Capacity	552 gal (2,089 L)
Working Liquid Capacity	475 gal (1,799 L)
FOG Capacity*	413 gal (3,011 lbs)
Airspace	16.2%
Length	64.9" (1,648 mm)
Width	61.7" (1,567 mm)
Height	54.6" (1,387 mm)
Liquid Level	44" (1,118 mm)
Invert Drop	3" (76 mm)
Fiberglass Supports	0
Compartments	2
Maximum Traffic Burial Depth	48" (1,219 mm)
Minimum Traffic Burial Depth	18" (457 mm)
Minimum Non-traffic Burial Depth	6" (152 mm)
Maximum Pipe Diameter	4" (102 mm)
Weight	246 lbs (112 kg)

*Based on ASME A112.14.3

TOP VIEW



SIDE VIEW



END VIEW

Contact Infiltrator's Technical Services Department for assistance at 1-800-221-4436 or info@infiltratorwater.com