

DURASLOT® SLOTTED DRAIN SPECIFICATION

Scope

This specification describes 4- through 36-inch (100 to 900 mm) Duraslot slotted drain for use in surface drain and conveyance applications.

Pipe Requirements

Duraslot pipe, as manufactured and distributed by ADS, Inc., shall have a smooth interior and annular exterior corrugations with an aluminum slot grate frame mounted longitudinally along the length of the pipe to accept the grate while maintaining the original pipe diameter.

- 4- through 10-inch (100 to 250 mm) pipe shall meet AASHTO M252, Type S.
- 12- through 36-inch (300 to 900 mm) pipe shall meet AASHTO M294, Type S or ASTM F2306.
- Manning's "n" value for use in design shall be 0.012.

The aluminum slot grate frame shall be manufactured from 0.063-inch (1.6 mm) tempered commercial aluminum meeting the requirements of ASTM B209, consisting of two parallel plates separated by spacers spanning the slot on 6-inch (150 mm) centers. The aluminum slot grate frame shall be coated with a primer to protect the aluminum when installed in concrete. The grate shall be ½ - #13 galvanized steel or ½ - #13 304 stainless steel per ASTM F1267. Alternatively, aluminum slot grate may be left open top. The grate shall have diamond-shaped openings with a 52% open area and be ADA compliant. The flange at the bottom of the aluminum slot grate frame shall be riveted to the pipe with a minimum of two rivets per linear foot.

Fittings

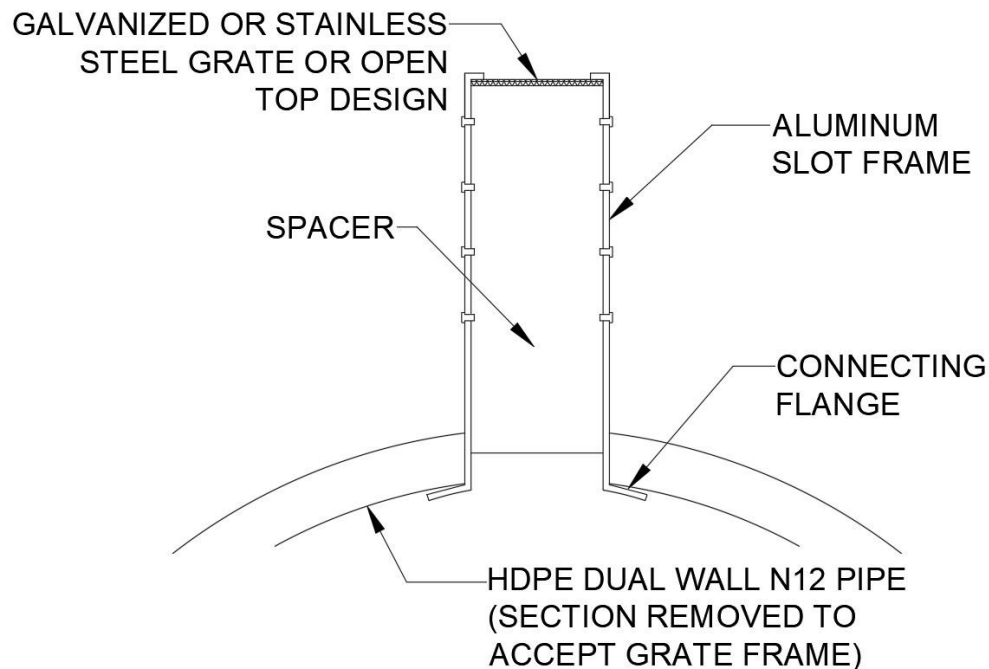
Duraslot fittings shall be modified from fittings which conform to AASHTO M252, AASHTO M294 or ASTM F2306.

Build America, Buy America (BABA)

Duraslot pipe, manufactured in accordance with AASHTO M252, AASHTO M294 or ASTM F2306, complies with the requirements in the Build America, Buy America (BABA) Act.

Installation

Installation shall be in accordance with ADS recommended installation instructions. Contact your local ADS representative or visit www.adspipe.com for a copy of the latest installation guidelines.



Duraslot Standard Dimensions

	Nominal Pipe Diameter in (mm)									
	4" (100)	6" (150)	8" (200)	10" (250)	12" (300)	15" (375)	18" (450)	24" (600)	30" (750)	36" (900)
L - Drain Grate Length)	118.0 (2997)					116.0 (2946)				
E - Pipe End Length	1.0 (25)					2.0 (51)				
H -.5" slot	2.75 (70)	3.0 (76)	3.0 (76)	3.0 (76)	3.5 (89)	3.75 (95)	4.0 (102)	4.75 (121)	5.0 (127)	5.25 (133)
H - 6.0" slot	6.25 (159)	6.5 (165)	6.5 (165)	6.5 (165)	7.0 (178)	7.0 (178)	7.0 (178)	7.25 (184)	8.25 (210)	8.25 (210)
O - Opening Width	1.25 (32)	1.75 (44)	1.75 (44)	1.75 (44)	1.75 (44)	1.75 (44)	1.75 (44)	1.75 (44)	1.75 (44)	1.75 (44)
S - Slot Width	1.75 (44)	2.25 (57)	2.25 (77)	2.25 (77)	2.25 (77)	2.25 (77)	2.25 (77)	2.25 (77)	2.25 (77)	2.25 (77)
W - Pipe Width with Corrugations	0.34 (9)	0.46 (12)	0.61 (15)	0.73 (19)	1.15 (29)	1.30 (33)	1.57 (40)	1.86 (47)	2.55 (65)	2.85 (72)

Note: Custom slot heights available upon request. Production of custom slots will require approval by the Duraslot Project Engineer. Signed shop drawings also required from interested party.

