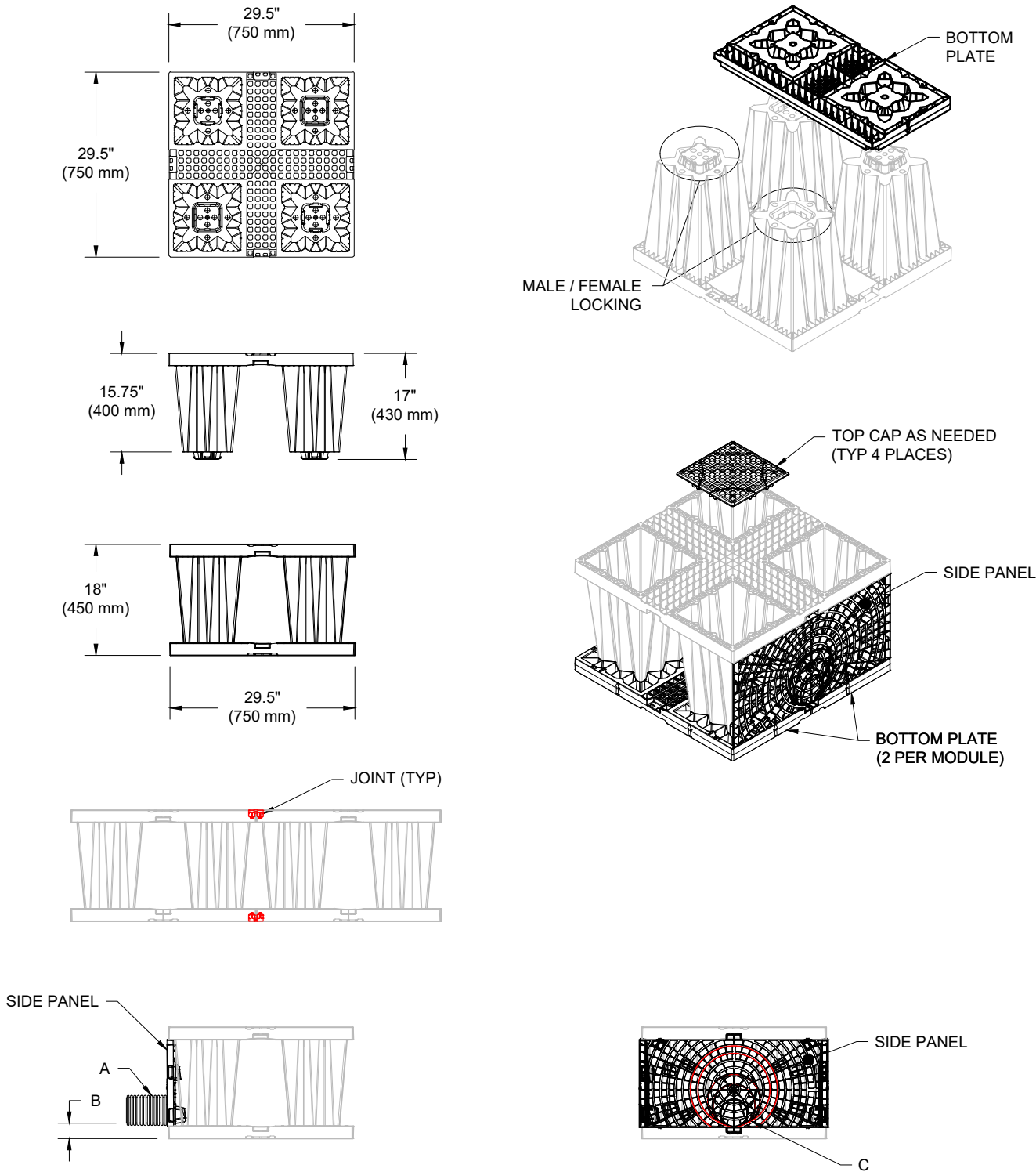


AQUABOX HALF MODULE TECHNICAL SPECIFICATION

NTS



NOMINAL MODULE SPECIFICATIONS		
SIZE (LENGTH X WIDTH X HEIGHT)	29.5" X 29.5" X 18"	(750 mm X 750 mm X 450 mm)
MODULE STORAGE	8.44 CUBIC FEET	(0.24 m³)

STUB CONNECTION	STUB (A)	INVERT (B)	MARKED CUT HOLE (C)
4" (100 mm) ADS N-12 (ECCENTRIC)	4" (100 mm)	2.1" (54 mm)	160 mm
6" (150 mm) ADS N-12 (ECCENTRIC)	6" (150 mm)	2.2" (57 mm)	200 mm
8" (200 mm) ADS N-12 (ECCENTRIC)	8" (200 mm)	2.4" (60 mm)	-
10" (250 mm) ADS N-12 (ECCENTRIC)	10" (250 mm)	2.5" (64 mm)	-


NOTE: ALL DIMENSIONS ARE NOMINAL

TECHNICAL SPECIFICATIONS
AQUABOX HALF MODULE

DATE:	05/30/25	DRAWN:	SMW
DRAWING #:	771-012	CHECKED:	JLM

DATE	DRWN	CHKD	DESCRIPTION

Aquabox
Modular Stormwater Management System



4640 TRUEMAN BLVD
HILLIARD, OH 43026

THIS DRAWING HAS BEEN PREPARED BASED ON INFORMATION PROVIDED TO ADS/STORMTECH UNDER THE DIRECTION OF THE PROJECT'S ENGINEER OF RECORD ("EOR") OR OTHER PROJECT REPRESENTATIVE. THIS DRAWING IS NOT INTENDED FOR USE IN BIDDING OR CONSTRUCTION WITHOUT THE EOR'S PRIOR APPROVAL. EOR SHALL REVIEW THIS DRAWING PRIOR TO BIDDING AND/OR CONSTRUCTION. IT IS THE ULTIMATE RESPONSIBILITY OF THE EOR TO ENSURE THAT THE PRODUCT(S) DEPICTED AND ALL ASSOCIATED DETAILS MEET ALL APPLICABLE LAWS, REGULATIONS, AND PROJECT REQUIREMENTS.