

# Duraslot® Submittal Package



## Package Contents

1. Product overview
  - a. ADS standard specification
2. Duraslot standard drawings
  - a. Standard Slot Height
  - b. Custom Slot Height
  - c. Grate (by McNichols Co.)
  - d. Grated assembly
  - e. Open top assembly

[adspipe.com](http://adspipe.com)

800-821-6710



# Duraslot® Slotted Drain Specification

## Scope

This specification describes 4- through 36-inch (100 to 900 mm) diameter Duraslot slotted drain for use in surface drainage and conveyance applications.

## Pipe Requirements

Duraslot pipe, as manufactured and distributed by ADS, Inc., shall have a smooth interior and annular exterior corrugations with an aluminum slot frame mounted longitudinally along the length of the pipe to accept the grate while maintaining the original pipe diameter.

- 4- through 10-inch (100 to 250 mm) pipe shall meet AASHTO M252, Type S.
- 12- through 36-inch (300 to 900 mm) pipe shall meet AASHTO M294, Type S or ASTM F2306.
- Manning's "n" value for use in design shall be 0.012.

The aluminum slot frame shall be manufactured from 0.063-inch (1.6 mm) thick tempered commercial 5052 aluminum meeting the requirements of ASTM B209, consisting of two parallel plates separated by spacers spanning the slot 6-inch (150 mm) on centers. The aluminum slot frame shall be coated with a primer to protect the aluminum when installed in concrete. The grate shall be ½ - #13 galvanized steel or ½ - #13 304 stainless steel per ASTM F1267. The grate shall have diamond-shaped openings with a 52% open area and be ADA compliant. Alternatively, aluminum slot riser may be left open top. The flange at the bottom of the aluminum slot frame shall be riveted to the inside crown of the pipe with a minimum of two rivets per linear foot.

## Fittings

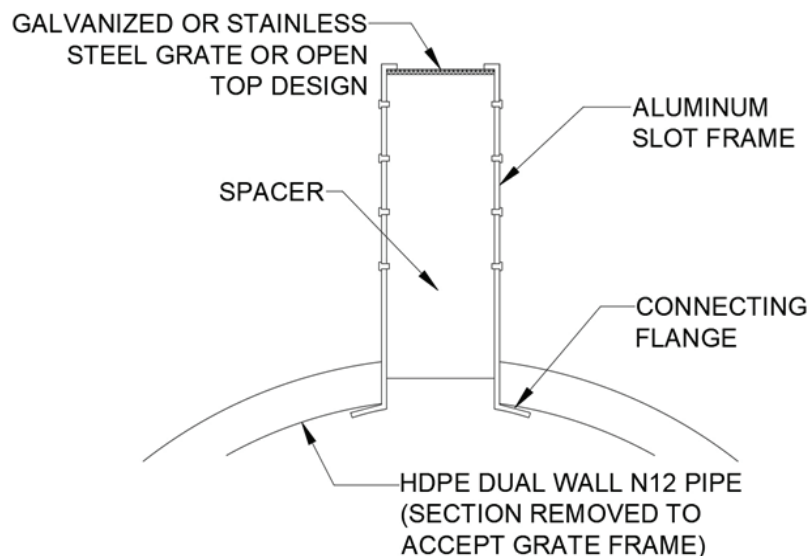
Duraslot fittings shall be modified from fittings which conform to AASHTO M252, AASHTO M294 or ASTM F2306.

## Build America, Buy America (BABA)

Duraslot pipe, manufactured in accordance with AASHTO M252, AASHTO M294 or ASTM F2306, complies with the requirements in the Build America, Buy America (BABA) Act.

## Installation

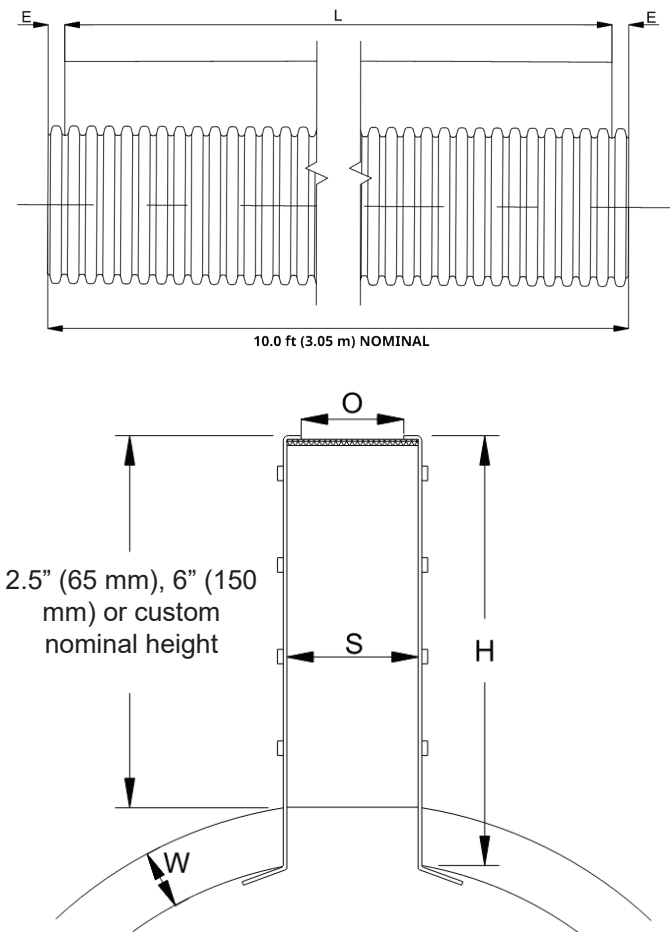
Installation shall be in accordance with ADS recommended installation instructions. Contact your local ADS representative or visit [www.adspipe.com](http://www.adspipe.com) for a copy of the latest installation guidelines.



Duraslot Standard Dimensions

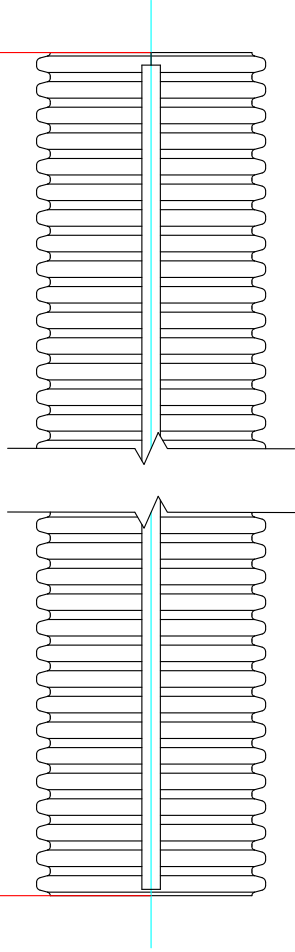
	Nominal Pipe Diameter in (mm)									
	4 (100)	6 (150)	8 (200)	10 (250)	12 (300)	15 (375)	18 (450)	24 (600)	30 (750)	36 (900)
L – Drain Grate Length	118.0 (2997)					116.0 (2946)				
E – Pipe End Length	1.0 (25)					2.0 (51)				
H – 2.5" (65 mm) Slot	2.75 (70)	3.0 (76)	3.0 (76)	3.0 (76)	3.5 (89)	3.75 (95)	4.0 (102)	4.75 (121)	5.0 (127)	5.25 (133)
H – 6.0" (150 mm) Slot	6.25 (159)	6.5 (165)	6.5 (165)	6.5 (165)	7.0 (178)	7.0 (178)	7.0 (178)	7.25 (184)	8.25 (210)	8.25 (210)
O – Opening Width	1.25 (32)	1.75 (44)	1.75 (44)	1.75 (44)	1.75 (44)	1.75 (44)	1.75 (44)	1.75 (44)	1.75 (44)	1.75 (44)
S – Slot Width	1.75 (44)	2.25 (57)	2.25 (57)	2.25 (57)	2.25 (57)	2.25 (57)	2.25 (57)	2.25 (57)	2.25 (57)	2.25 (57)
W – Pipe Width with Corrugation	0.34 (9)	0.46 (12)	0.61 (15)	0.73 (19)	1.15 (29)	1.30 (33)	1.57 (40)	1.86 (47)	2.55 (65)	2.85 (72)

Note: Custom slot heights available upon request. Production of custom slots will require approval by the Duraslot Project Engineer. Signed shop drawings also required from interested party.

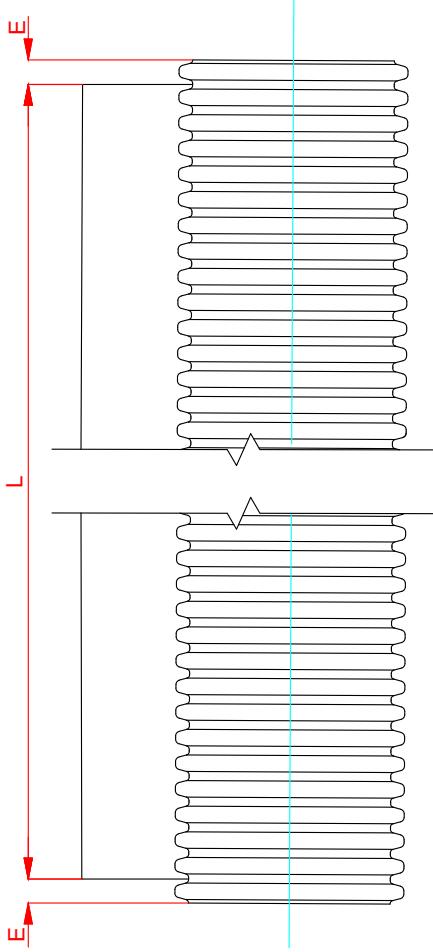


Note: 2.5" (65 mm) standard slot height Duraslot is available in 6" – 12" (150-300 mm) Ø pipe and 6" (150 mm) standard slot height Duraslot is available in 6"-36" (150-900 mm) Ø pipe.

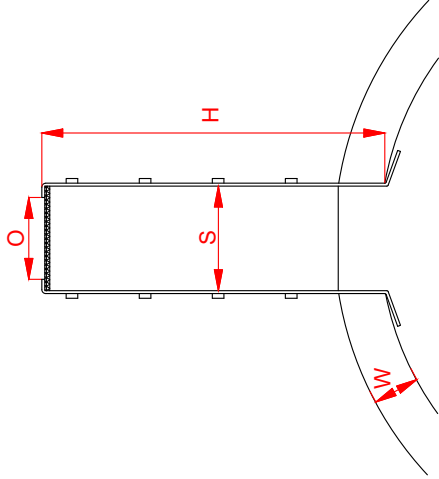
10.0 ft (3.05 m) NOMINAL



PLAN VIEW



PROFILE VIEW



CROSS SECTION

PIPE Ø, in (mm)	H, in (mm)	W, in (mm)	O, in (mm)	S, in (mm)	L in (mm)	E in (mm)	GRATED PRODUCT #	OPEN TOP PRODUCT #
4 (100)	2.75 (70)	0.34 (9)	1.25 (32)	1.75 (44)	118.0 (2997)	1.0 (25)	0420DS	0420DSOT
4 (100)	6.25 (159)						0460DS	0460DSOT
6 (150)	3.00 (76)	0.46 (13)					0620DS	0620DSOT
6 (150)	6.50 (165)						0660DS	0660DSOT
8 (200)	3.00 (76)	0.61 (15)					0820DS	0820DSOT
8 (200)	6.50 (165)						0860DS	0860DSOT
10 (250)	3.00 (76)	0.73 (19)					1020DS	1020DSOT
10 (250)	6.50 (165)						1060DS	1060DSOT
12 (300)	3.50 (89)	1.15 (29)	1.75 (44)	2.25 (57)			1220DS	1220DSOT
12 (300)	7.00 (178)						1260DS	1260DSOT
15 (375)	7.00 (178)	1.30 (33)					1560DS	1560DSOT
18 (450)	7.00 (178)	1.57 (40)					1860DS	1860DSOT
24 (600)	7.25 (184)	1.86 (47)			116.0 (2946)	2.0 (51)	2460DS	2460DSOT
30 (750)	8.25 (210)	2.55 (65)					3060DS	3060DSOT
36 (900)	8.25 (210)	2.85 (72)					3660DS	3660DSOT

NOTES:

- 1. ADA COMPLIANT GRATING OR OPEN TOP SURFACE TREATMENT OPTIONS AVAILABLE

© 2025 ADS, INC.

1

Updated Layers & Logo

K/J/S

01/10/2025

-

REV.

DESCRIPTION

BY

MM/DD/YY

CHKD

Duraslot Pipe

Standard Slot Height

Advanced Drainage Systems, Inc.

DRAWING NUMBER: STD-1400A

DRAWN BY: KJS

DATE: 05-18-2023

CHECKED BY: -

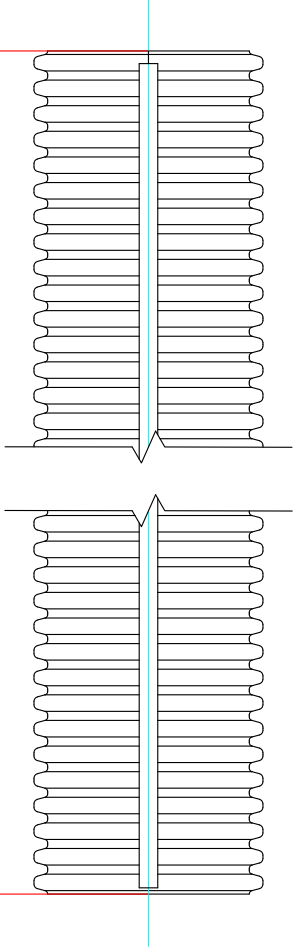
SCALE: NTS

SHEET: 1 OF 1

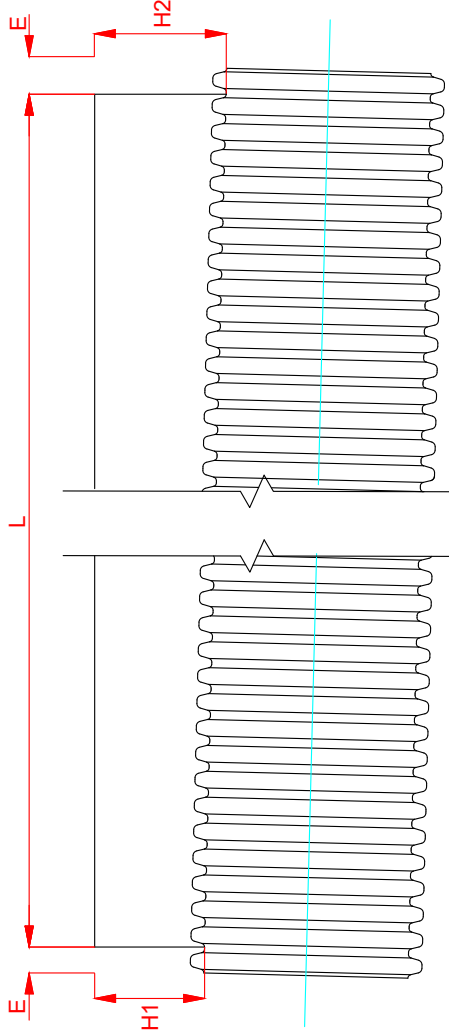
4640 TRUEMAN BLVD

HILLIARD, OHIO 43026

4.0 ft - 10.0 ft (1.22 m - 3.05 m) NOMINAL



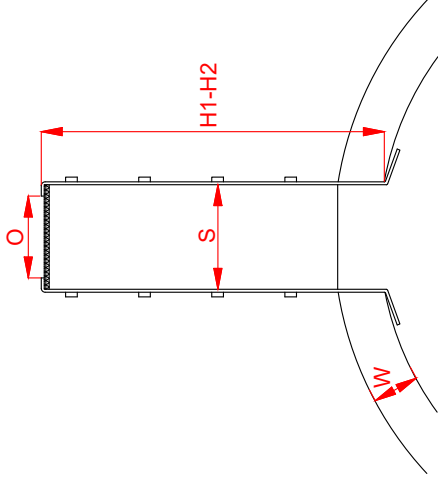
PLAN VIEW



PROFILE VIEW

NOTES:

1. ADA COMPLIANT GRATING OR OPEN TOP SURFACE TREATMENT OPTIONS AVAILABLE
2. H1 AND H2 VARY BASED ON PROJECT SPECIFICATIONS AND MAY NOT RESEMBLE THE IMAGES SHOWN ABOVE.



CROSS SECTION

PIPE Ø, in (mm)	H1-H2, in (mm)	W, in (mm)	O, in (mm)	S, in (mm)	L, in (mm)	E, in (mm)	PRODUCT #
4 (100)	2.75 - 24.00 (70 - 610)	0.34 (9)	1.25 (32)	1.75 (44)	46 - 118.0 (1168 - 2997)	1.0 (25)	0490DS
6 (150)	3.00 - 24.00 (76 - 610)	0.46 (13)					0690DS
8 (200)	3.00 - 24.00 (76 - 610)	0.61 (15)					0890DS
10 (250)	3.00 - 24.00 (76 - 610)	0.73 (19)					1090DS
12 (300)	3.50 - 24.00 (89 - 609)	1.15 (29)			46 - 118.0 (1168 - 2997)	2.0 (51)	1290DS
12 (300)	24.01 - 36.00 (610 - 914)						1290DSDT
15 (375)	3.75 - 24.00 (95 - 609)	1.30 (33)					1590DS
15 (375)	24.01 - 36.00 (610 - 914)						1590DSDT
18 (450)	4.00 - 24.00 (102 - 609)	1.57 (40)	1.75 (44)	2.25 (57)	46 - 118.0 (1168 - 2997)	2.0 (51)	1890DS
18 (450)	24.01 - 36.00 (610 - 914)						1890DSDT
24 (600)	4.25 - 24.00 (121 - 609)	1.86 (47)					2490DS
24 (600)	24.01 - 36.00 (610 - 914)						2490DSDT
30 (750)	5.00 - 24.00 (127 - 609)	2.55 (65)			46 - 118.0 (1168 - 2997)	2.0 (51)	3090DS
30 (750)	24.01 - 36.00 (610 - 914)						3090DSDT
36 (900)	5.25 - 24.00 (133 - 609)	2.85 (72)					3690DS
36 (900)	24.01 - 36.00 (610 - 914)						3690DSDT

© 2025 ADS, INC.

1	Updated Layers & Logo	KJS	01/09/25	-	
REV.	DESCRIPTION	BY	MM/DD/YY	CHKD	

ADVANCED DRAINAGE SYSTEMS, INC. ("ADS") HAS PREPARED THIS DETAIL BASED ON INFORMATION PROVIDED TO ADS. THIS DRAWING IS INTENDED TO DEPICT THE COMPONENTS AS REQUESTED. ADS HAS NOT PERFORMED ANY ENGINEERING OR DESIGN SERVICES FOR THIS PROJECT. NOR HAS ADS INDEPENDENTLY VERIFIED THE INFORMATION SUPPLIED. THE INSTALLATION DETAILS PROVIDED HEREIN ARE GENERAL RECOMMENDATIONS AND ARE NOT SPECIFIC FOR THIS PROJECT. THE DESIGN ENGINEER SHALL REVIEW THESE DETAILS PRIOR TO CONSTRUCTION. IT IS THE DESIGN ENGINEER'S RESPONSIBILITY TO ENSURE THE DETAILS PROVIDED HEREIN MEETS OR EXCEEDS THE APPLICABLE NATIONAL, STATE, OR LOCAL REQUIREMENTS AND TO ENSURE THAT THE DETAILS PROVIDED HEREIN ARE ACCEPTABLE FOR THIS PROJECT.

Duraslot Pipe  
Custom Slot Height

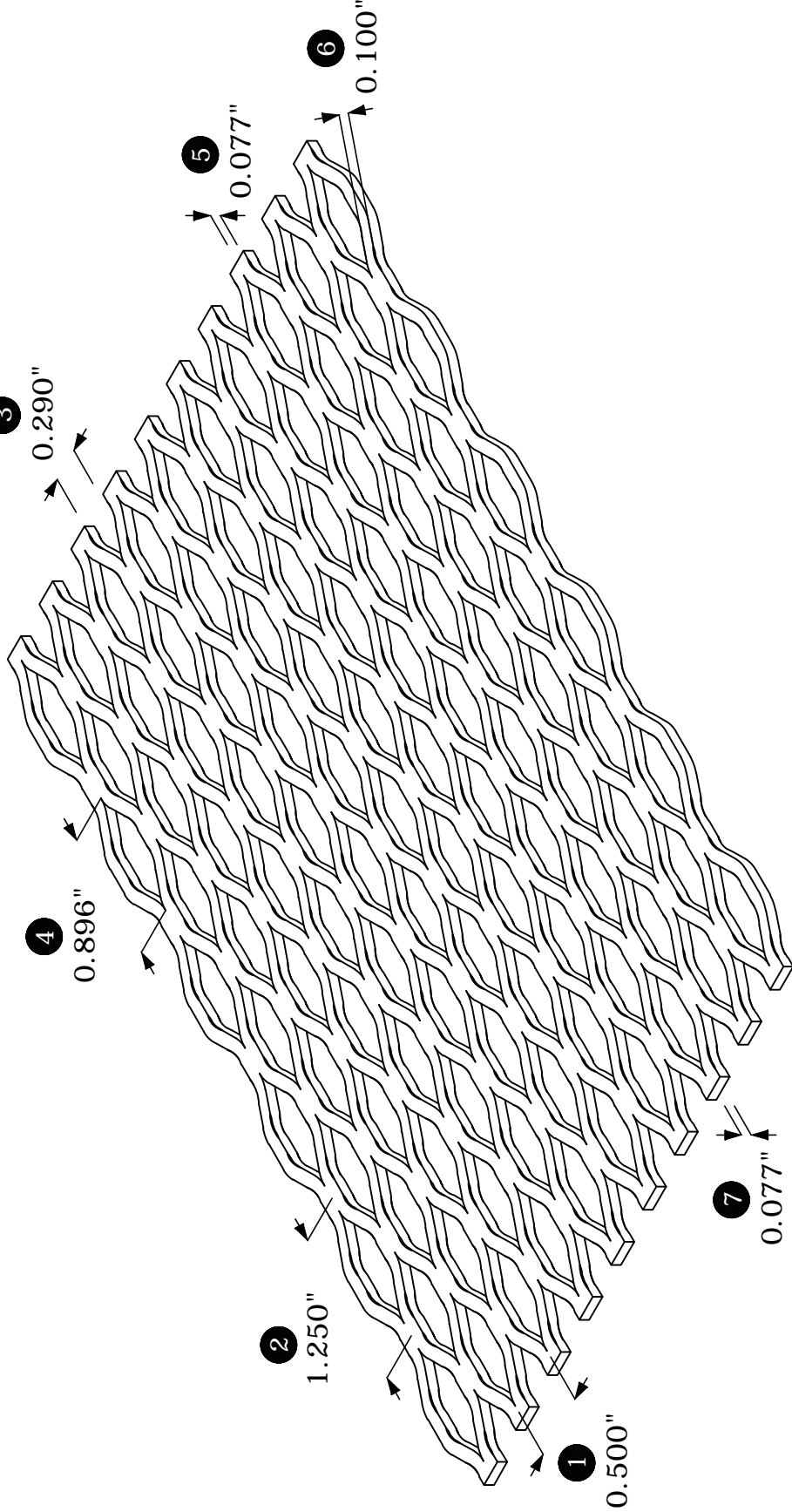
DRAWING NUMBER: STD-1401A



4640 TRUEMAN BLVD  
HILLIARD, OHIO 43026

DRAWN BY: KJS  
DATE: 05-19-2023  
CADD BY: -  
SCALE: NTS  
SHEET: 1 OF 1





# McNICHOLS CO.



McNICHOLS CO. has based these drawings on the data provided by you, and they are intended solely for informational purposes as part of the order process and are not to be used for engineering purposes. THE DRAWINGS (INCLUDING DESIGN AND DIMENSIONS) ARE "AS SHOWN" AND DO NOT REPRESENT ANY IMPLIED WARRANTIES OF FITNESS FOR PARTICULAR PURPOSES. McNichols Co. will in no event be liable for your use or the results of your use of these drawings, and you assume all risk and liability for any losses, damage, claims or expenses resulting from such use.

## McNICHOLS® EXPANDED METAL

- EXPANDED TYPE: Flattened  
PRIMARY MATERIAL: Galvanized Steel  
STYLE & TYPE: 1/2 #13 Flattened  
PERCENT OPEN AREA: 64%
- 1 SHORT WAY OF DESIGN (SWD): 0.500"
  - 2 LONG WAY OF DESIGN (LWD): 1.250"
  - 3 SHORT WAY OF OPENING (SWO): 0.290"
  - 4 LONG WAY OF OPENING (LWO): 0.896"
  - 5 STRAND THICKNESS: 0.077"
  - 6 STRAND WIDTH: 0.100"
  - 7 OVERALL THICKNESS: 0.077"

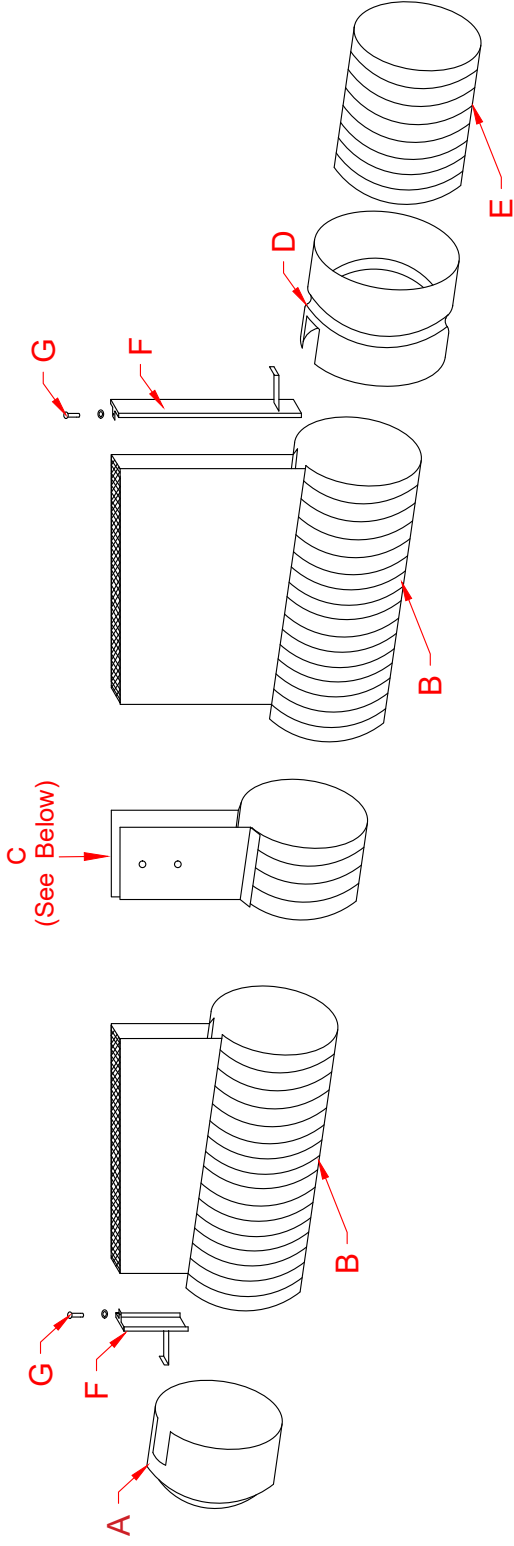
## APPROVAL

JOB NAME:  
DATE:  
COMPANY:  
NAME:  
TITLE:  
SIGNATURE:

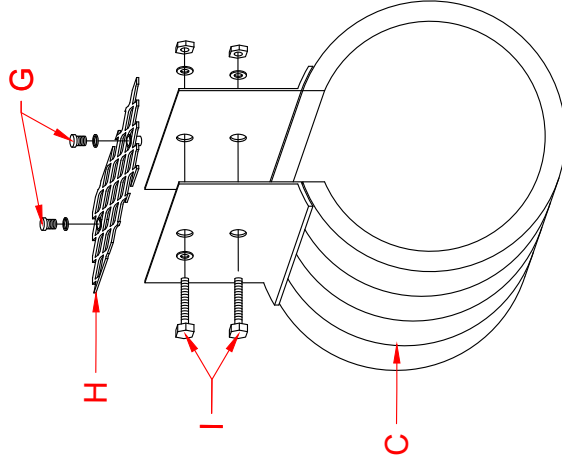
EXPANDED METAL  
SPECIFICATIONS MAY VARY  
SLIGHTLY WITHIN MILL  
TOLERANCES.

## DRAWING INFORMATION

NOT TO SCALE	
DWG NUMBER	REVISION
53E01213	A
<i>Inspired to Serve.®</i> ©McNICHOLS CO. 2018	



- A. Duraslot End Cap  
B. Duraslot Pipe  
C. Duraslot Coupler Band  
D. Duraslot Adapter  
E. ADS N-12 Pipe or HP Storm Pipe or Plain End Fitting  
F. Duraslot Grate Anchor Assembly  
G. 1/4" - 20 Flat Head Screw w/ Washer  
H. Duraslot Grate Connector  
I. Hex Head Assembly:  
(1) 5/16" x 3 1/2" Hex Head Screw  
w/ (2) Washers and (1) 5/16" - 18 Hex Nut



DURASLOT COUPLER BAND (C)  
HARDWARE ASSEMBLY

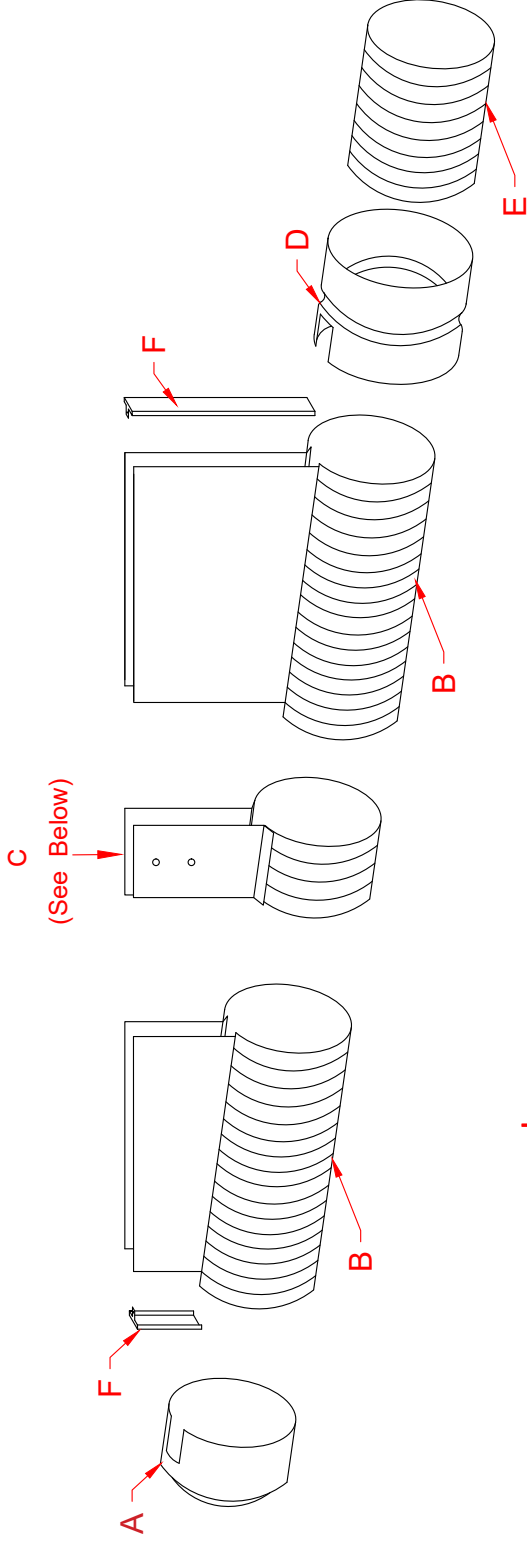
**NOTE:** - Slot height may vary per project  
- Each Cap (A) & Adapter (D) comes with Hardware - F, G  
- Each Coupler Band (C) comes with Hardware - G, H, I & J

1		Updated Layers & Logo	KJS-	01/09/2025	-	CHKD
REV.		DESCRIPTION	BY	MM/DD/YY		
Duraslot Assembly		4640 TRUEMAN BLVD HILLIARD, OHIO 43026				
DRAWING NUMBER: STD-1480A		DRAWN BY: KJS DATE: 03-26-2024 CADD BY: - SCALE: NTS SHEET 1 OF 1				

ADVANCED DRAINAGE SYSTEMS, INC. ("ADS") HAS PREPARED THIS DETAIL BASED ON INFORMATION PROVIDED TO ADS. THIS DRAWING IS INTENDED TO DEPICT THE COMPONENTS AS REQUESTED. ADS HAS NOT PERFORMED ANY ENGINEERING OR DESIGN SERVICES FOR THIS PROJECT NOR HAS ADS INDEPENDENTLY VERIFIED THE INFORMATION SUPPLIED. THE INSTALLATION DETAILS PROVIDED HEREIN ARE GENERAL RECOMMENDATIONS AND ARE NOT SPECIFIC FOR THIS PROJECT. THE DESIGN ENGINEER SHALL REVIEW THESE DETAILS PRIOR TO CONSTRUCTION. IT IS THE DESIGN ENGINEER'S RESPONSIBILITY TO ENSURE THE DETAILS PROVIDED HEREIN MEET OR EXCEEDS THE APPLICABLE NATIONAL, STATE, OR LOCAL REQUIREMENTS AND TO ENSURE THAT THE DETAILS PROVIDED HEREIN ARE ACCEPTABLE FOR THIS PROJECT.

© 2025 ADS, INC.

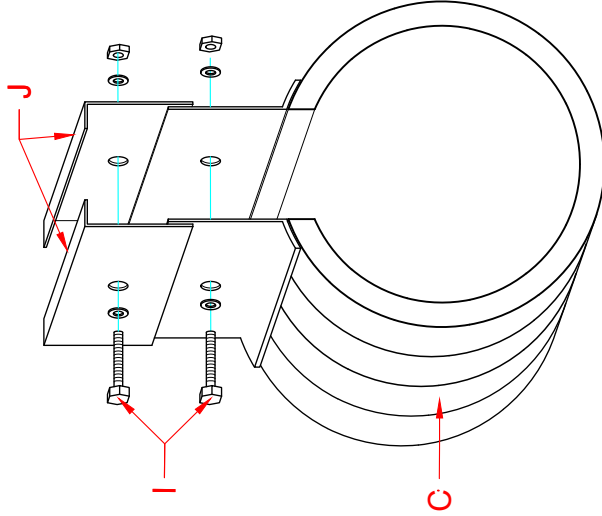
**ADS**  
Advanced Drainage Systems, Inc.



- A. Duraslot End Cap  
B. Duraslot Pipe  
C. Duraslot Coupler Band  
D. Duraslot Adapter  
E. ADS N-12 Pipe or HP Storm Pipe or Plain End Fitting  
F. Duraslot Slot Cap  
G. N/A  
H. N/A  
I. Hex Head Assembly:  
(1)  $\frac{1}{16}$ " x  $3\frac{1}{2}$ " Hex Head Screw  
w/ (2) Washers and (1)  $\frac{5}{16}$ " - 18 Hex Nut  
J. Duraslot Band Flanges

**NOTE:** - Slot height may vary per project  
- Each Cap (A) & Adapter (D) comes with a Grate Anchor (F)  
- Each Coupler Band (C) comes with Hardware - I, K & K

**DURASLOT COUPLER BAND (C)  
HARDWARE ASSEMBLY**



© 2025 ADS, INC.

REV.	Updated Layers & Logo	K/J/S	BY	MM/DD/YY	CHKD
1				01/09/25	-

ADVANCED DRAINAGE SYSTEMS, INC. ("ADS") HAS PREPARED THIS DETAIL BASED ON INFORMATION PROVIDED TO ADS. THIS DRAWING IS INTENDED TO DEPICT THE COMPONENTS AS REQUESTED. ADS HAS NOT PERFORMED ANY ENGINEERING OR DESIGN SERVICES FOR THIS PROJECT. NOR HAS ADS INDEPENDENTLY VERIFIED THE INFORMATION SUPPLIED. THE INSTALLATION DETAILS PROVIDED HEREIN ARE GENERAL RECOMMENDATIONS AND ARE NOT SPECIFIC FOR THIS PROJECT. THE DESIGN ENGINEER SHALL REVIEW THESE DETAILS PRIOR TO CONSTRUCTION. IT IS THE DESIGN ENGINEER'S RESPONSIBILITY TO ENSURE THE DETAILS PROVIDED HEREIN MEET OR EXCEEDS THE APPLICABLE NATIONAL, STATE, OR LOCAL REQUIREMENTS AND TO ENSURE THAT THE DETAILS PROVIDED HEREIN ARE ACCEPTABLE FOR THIS PROJECT.

**Duraslot Open  
Top Assembly**



4640 TRUEMAN BLVD  
HILLIARD, OHIO 43026

DRAWN BY: KJS  
DATE: 03-26-2024  
CADD BY: -  
SCALE: NTS  
SHEET: 1 OF 1

DRAWING NUMBER: STD-1480C