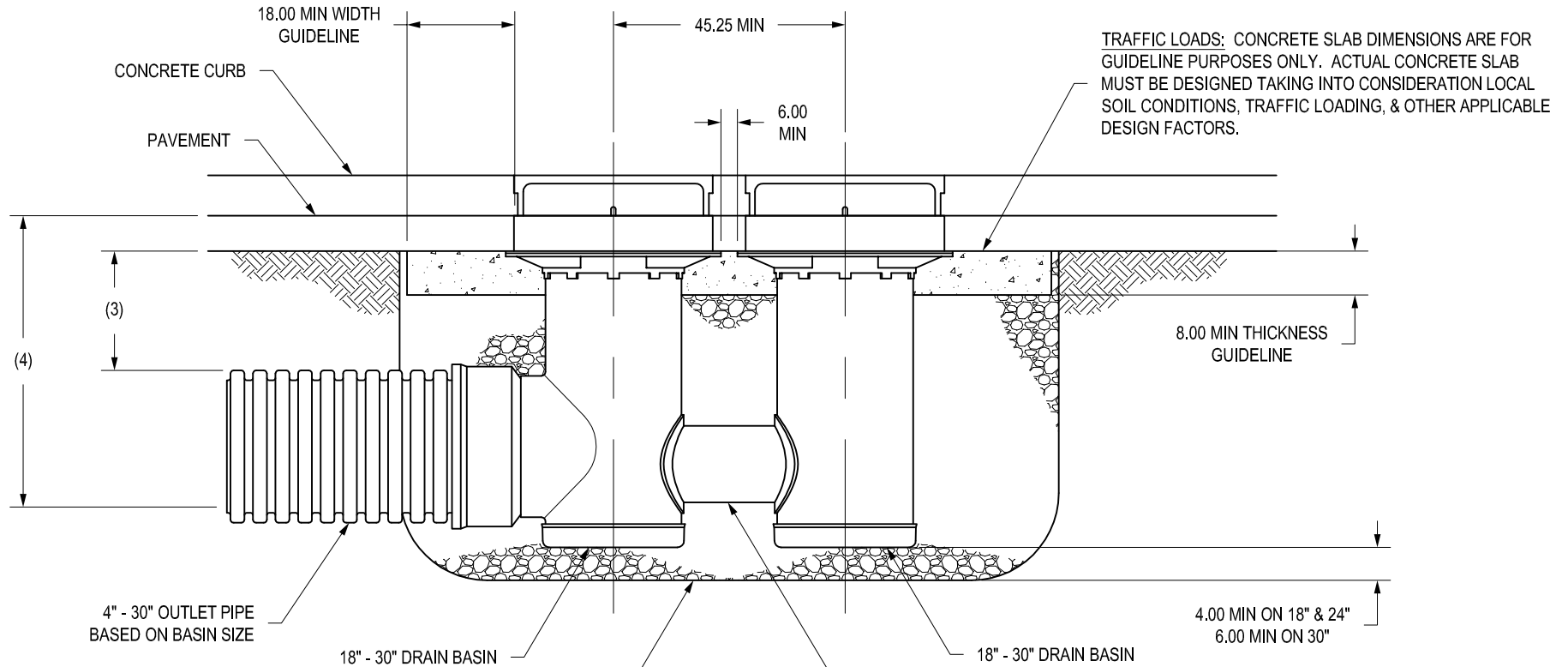


NYLOPLAST 2 X 3 CURB INLET DOUBLE STRUCTURES



THE BACKFILL MATERIAL SHALL BE CRUSHED STONE OR OTHER GRANULAR MATERIAL MEETING THE REQUIREMENTS OF CLASS I, CLASS II, OR CLASS III MATERIAL AS DEFINED IN ASTM D2321. BEDDING & BACKFILL FOR SURFACE DRAINAGE INLETS SHALL BE PLACED & COMPACTED UNIFORMLY IN ACCORDANCE WITH ASTM D2321.

ADD-A-BRANCH GASKETED SEWER SOIL TIGHT JOINT:
 12" MAX ON 18" BASIN
 15" MAX ON 24" BASIN
 18" MAX ON 30" BASIN

- 1 - DIMENSIONS ARE FOR REFERENCE ONLY
ACTUAL DIMENSIONS MAY VARY
- 2 - DIMENSIONS ARE IN INCHES
- 3 - MINIMUM PIPE BURIAL DEPTH PER PIPE MANUFACTURER RECOMMENDATION
- 4 - VARIABLE INVERT HEIGHTS AVAILABLE (ACCORDING TO PLANS/TAKE OFF)

THIS PRINT DISCLOSES SUBJECT MATTER IN WHICH NYLOPLAST HAS PROPRIETARY RIGHTS. THE RECEIPT OR POSSESSION OF THIS PRINT DOES NOT CONFER, TRANSFER, OR LICENSE THE USE OF THE DESIGN OR TECHNICAL INFORMATION SHOWN HEREIN REPRODUCTION OF THIS PRINT OR ANY INFORMATION CONTAINED HEREIN, OR MANUFACTURE OF ANY ARTICLE HEREFROM, FOR THE DISCLOSURE TO OTHERS IS FORBIDDEN, EXCEPT BY SPECIFIC WRITTEN PERMISSION FROM NYLOPLAST. ©2013 NYLOPLAST

DRAWN BY	EBC	MATERIAL
DATE	10-05-06	
REVISED BY	NMH	PROJECT NO./NAME
DATE	03-16-16	
DWG SIZE	A	SCALE NTS SHEET 1 OF 1

	3130 VERONA AVE BUFORD, GA 30518 PHN (770) 932-2443 FAX (770) 932-2490 www.nyloplast-us.com
	TITLE DOUBLE 2 FT X 3 FT CURB INLET 18 IN - 30 IN STRUCTURES WITH ADD-A-BRANCH
DWG NO.	7002-110-071 REV E