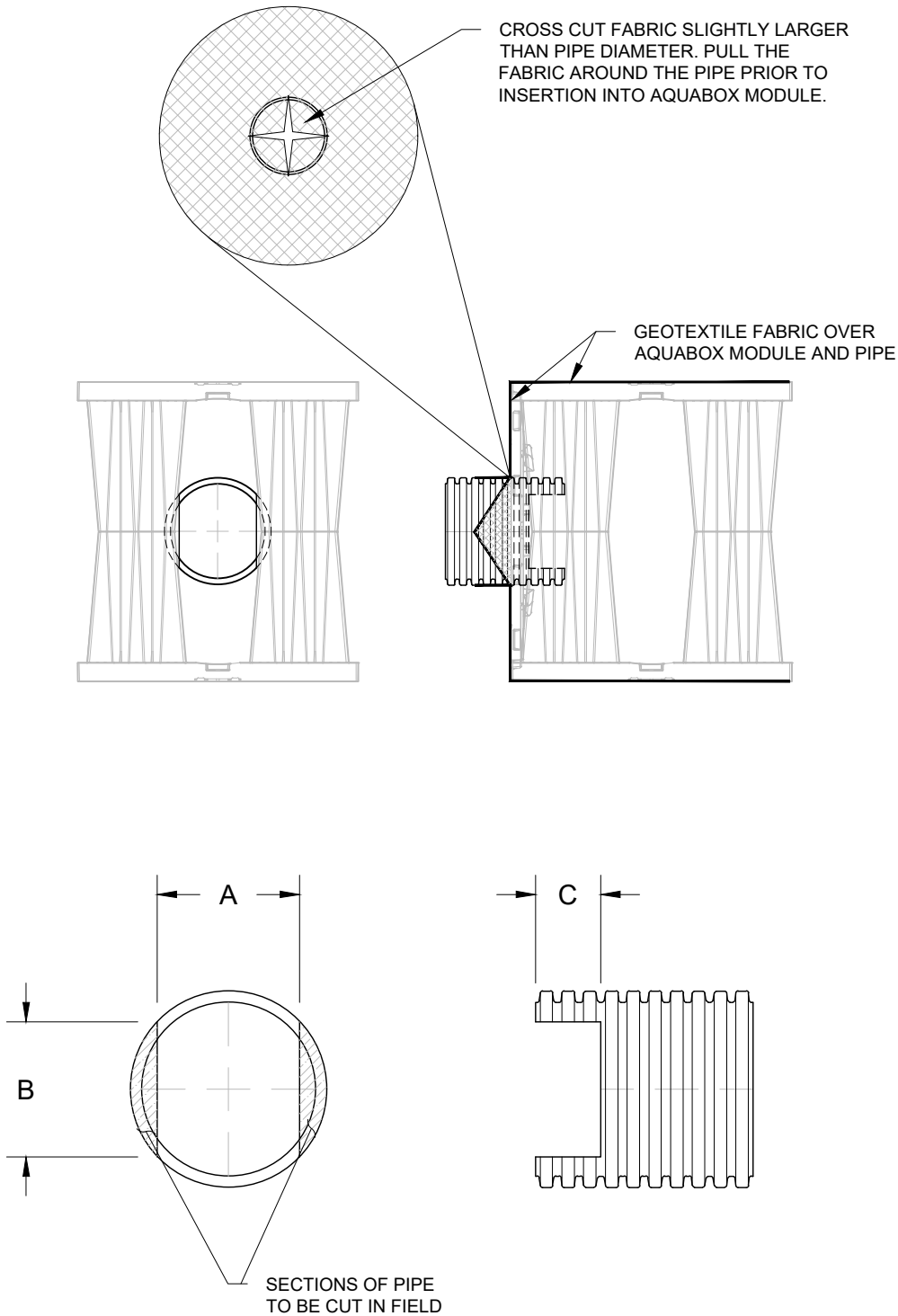


AQUABOX PIPE INSERTION DETAIL

NTS




PIPE SIZE	A	B	C
10" (250 mm)	8.25" (203 mm)	7.75" (197 mm)	5.00" (127 mm) - 4 CORRUGATIONS
12" (300 mm)	7.75" (197 mm)	12.00" (300 mm)	5.86" (148 mm) - 3 CORRUGATIONS
15" (375 mm)	7.50" (190 mm)	16.00" (406 mm)	7.88" (200 mm) - 3 CORRUGATIONS
18" (450 mm)	7.25" (184 mm)	20.00" (508 mm)	5.88" (149 mm) - 2 CORRUGATIONS

*DIMENSIONS AND CORRUGATIONS ARE APPROXIMATE
**CORRUGATIONS SHOULD BE CUT TO VALLEYS

PIPE INSERTION DETAIL
AQUABOX

DATE	DRWN	CHKD	DESCRIPTION
			MINIMAX COVER CHANGES

Aquabox
Modular Stormwater Management System



4640 TRUEMAN BLVD
HILLIARD, OH 43026

THIS DRAWING HAS BEEN PREPARED BASED ON INFORMATION PROVIDED TO ADS/STORMTECH UNDER THE DIRECTION OF THE PROJECT'S ENGINEER OF RECORD (EOR). THIS DRAWING IS NOT INTENDED FOR USE IN BIDDING OR CONSTRUCTION WITHOUT THE EOR'S PRIOR APPROVAL. EOR SHALL REVIEW THIS DRAWING PRIOR TO BIDDING AND/OR CONSTRUCTION. IT IS THE ULTIMATE RESPONSIBILITY OF THE EOR TO ENSURE THAT THE PRODUCT(S) DEPICTED AND ALL ASSOCIATED DETAILS MEET ALL APPLICABLE LAWS, REGULATIONS, AND PROJECT REQUIREMENTS.