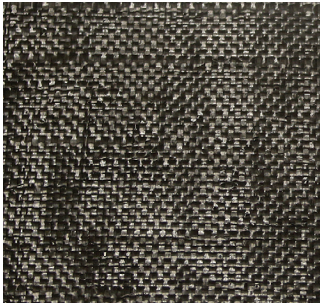


# Geosynthetics Solutions Provider



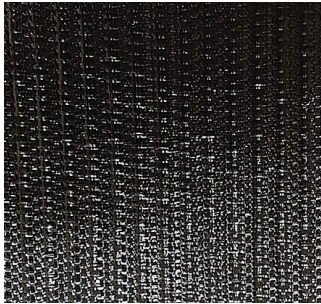
**Non-Woven**

- Civil fabrics
- Environmental fabrics



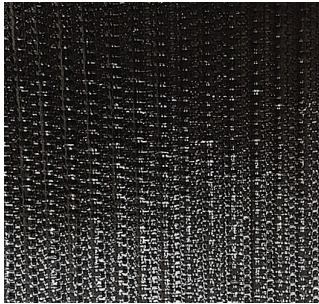
**Slit Tape Woven**

- Stabilization fabrics
- Light duty stabilization



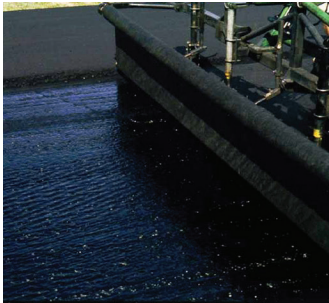
**Med. Strength Wovens**

- Drainage monofilament fabrics
- High strength for stabilization



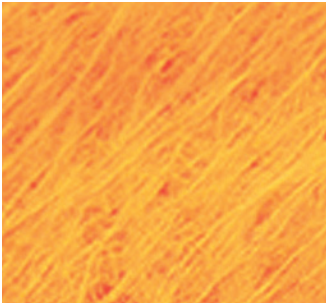
**High Strength Wovens**

- High strength fabrics
- High flow rate fabrics



**Paving Fabric**

- Non-woven
- Peel and stick



**Orange Fabric**

- Delineation fabric
- Soil separation & drainage



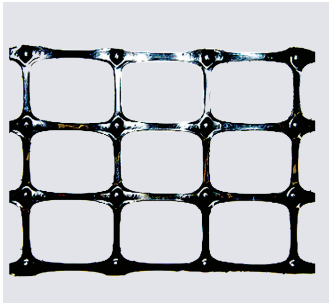
**Spun Bond Fabrics**

- Heat-Bonded Fabrics
- Ranges from 1.5-10 oz/yd<sup>2</sup>



**Septic Fabric**

- .5 oz/yd<sup>2</sup> & .7 oz/yd<sup>2</sup>
- Separation for drainfields



**Bi-Axial Grids**

- Subgrade stabilization
- Aggregate base reinforced



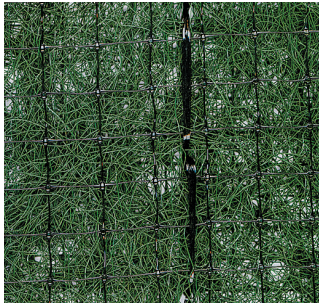
**Uni-Axial Grids**

- Reinforced soil slopes
- MSE walls



**Erosion Control**

- Straw & coconut mats
- All-natural netting

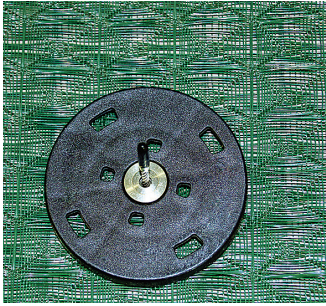


**Turf Reinforcement**

- Synthetic stitch bonded mats
- Permanent woven HPTRM







### TRM

- 3-25 year design life
- Anchoring systems



### Jute Mat

- 100% biodegradable
- Water, wind & erosion protection



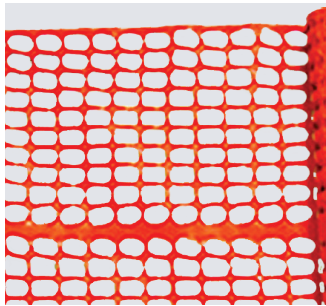
### Wattle

- 9", 12" & 20"
- Straw, excelsior & burlap



### Silt Fence

- Full line of silt fences
- Stakes



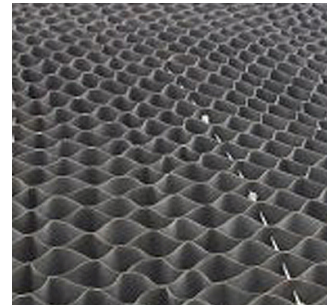
### Safety Fence

- Warning barrier
- Diamond link fence



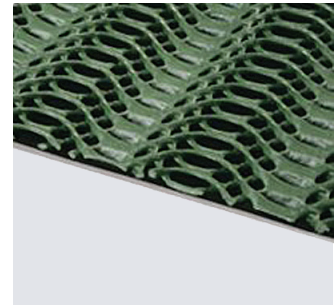
### BAM! Ground Mat

- Dual side tread design
- Light weight



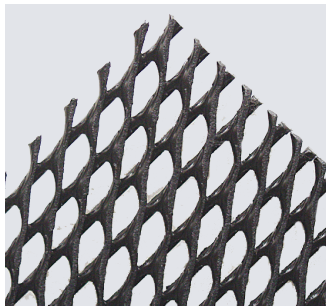
### Geocell

- Slope protection
- Erosion & sediment control



### Grass Reinforcement

- Grass parking lots
- Pedestrian walkways



### Geonet

- High compressive strength
- High laminar flow



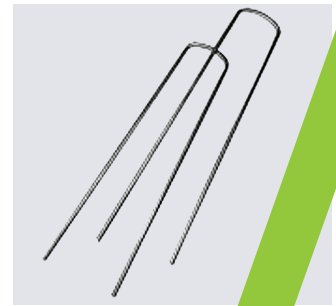
### Porous Pavers

- Grass or gravel filled
- Trafficked areas



### Fabric Pins

- 12", 18" & 24"
- Washer crimped 1/8" from end



### Staples

- 6" 11-gauge steel
- 1,000 per box

Contact your local geosynthetic specialist for product lead times & pricing.

