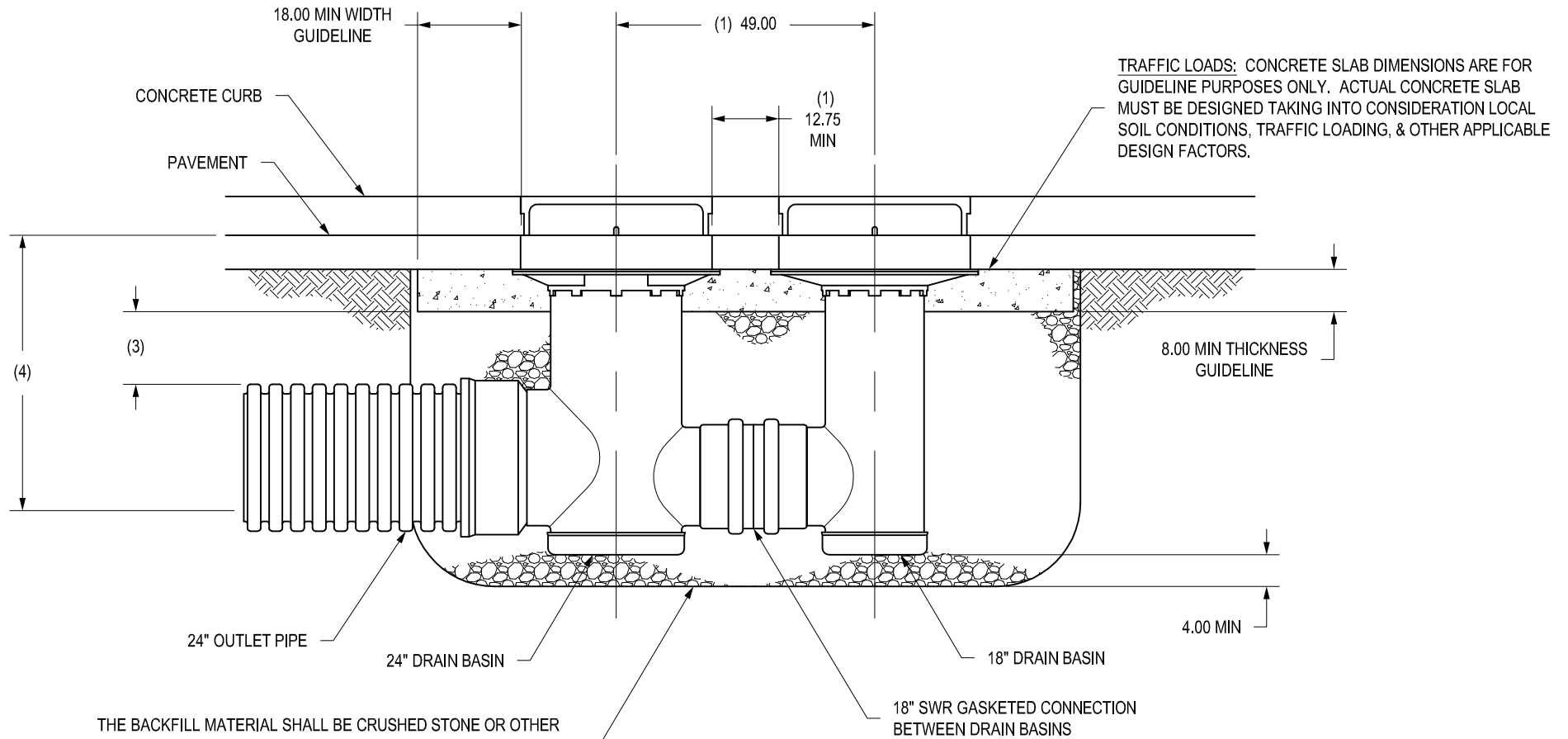


NYLOPLAST 2 X 3 CURB INLET DOUBLE STRUCTURES




THE BACKFILL MATERIAL SHALL BE CRUSHED STONE OR OTHER GRANULAR MATERIAL MEETING THE REQUIREMENTS OF CLASS I, CLASS II, OR CLASS III MATERIAL AS DEFINED IN ASTM D2321. BEDDING & BACKFILL FOR SURFACE DRAINAGE INLETS SHALL BE PLACED & COMPACTED UNIFORMLY IN ACCORDANCE WITH ASTM D2321.

- 1 - DIMENSIONS ARE FOR REFERENCE ONLY
ACTUAL DIMENSIONS MAY VARY
- 2 - DIMENSIONS ARE IN INCHES
- 3 - MINIMUM PIPE BURIAL DEPTH PER PIPE MANUFACTURER RECOMMENDATION
- 4 - VARIABLE INVERT HEIGHTS AVAILABLE (ACCORDING TO PLANS/TAKE OFF)

THIS PRINT DISCLOSES SUBJECT MATTER IN WHICH NYLOPLAST HAS PROPRIETARY RIGHTS. THE RECEIPT OR POSSESSION OF THIS PRINT DOES NOT CONFER, TRANSFER, OR LICENSE THE USE OF THE DESIGN OR TECHNICAL INFORMATION SHOWN HEREIN REPRODUCTION OF THIS PRINT OR ANY INFORMATION CONTAINED HEREIN, OR MANUFACTURE OF ANY ARTICLE HEREFROM, FOR THE DISCLOSURE TO OTHERS IS FORBIDDEN, EXCEPT BY SPECIFIC WRITTEN PERMISSION FROM NYLOPLAST.

©2013 NYLOPLAST

DRAWN BY	EBC	MATERIAL	
DATE	09-22-06	PROJECT NO./NAME	
REVISED BY	NMH	DATE	03-16-16
DWG SIZE	A	SCALE	1:30 SHEET 1 OF 1



ADS
Nyloplast

3130 VERONA AVE
BUFORD, GA 30518
PHN (770) 932-2443
FAX (770) 932-2490
www.nyloplast-us.com

TITLE	DOUBLE 2 FT X 3 FT CURB INLET 18 IN & 24 IN STRUCTURES WITH 18 IN & 24 IN OUTLETS
DWG NO.	7002-110-069 REV G