

Add-A-Branch™ Kit

Nyloplast Add-a-Branch kits are a quick and cost-effective way to connect 4-24" (100-600 mm) diameter lateral pipes to Nyloplast Drain Basins in the field. Using an Add-a-Branch kit provides flexibility during the installation phases of a job site when unknown variables may be expected or encountered.

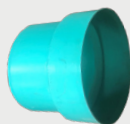
When you have to make field connections, use Nyloplast and Add-a-Branch to save you time and money. Avoid time to knockout precast concrete and time for grouting and curing of concrete. Add a branch installs 3-4 times faster than traditional connection methods.

Our newest 24" Add-a-Branch kits have the ability to connect a variety of lateral pipe types to the 36" Drain Basins. Add-A-Branch Pipe connections include ADS N-12®, PVC Sewer SDR35, PVC Schedule 40 and many more, making them versatile for all storm water installations.

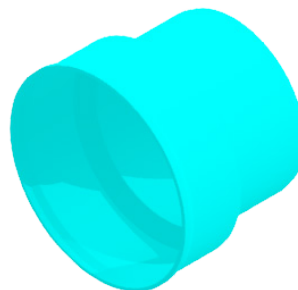
Kit Includes:



N-12 Valley Gasket & Add-A-Branch Gasket



Nyloplast Branch



Add-A-Branch Product Numbers

Pipe Size	Part Number	Min Basin Size
4" (100 mm)	6004AG_	8" (200 mm)
6" (150 mm)	6006AG_	10" (250 mm)
8" (200 mm)	6008AG_	12" (300 mm)
10" (250 mm)	6010AG_	15" (375 mm)
12" (300 mm)	6012AG_	18" (450 mm)
15" (375 mm)	6015AG_	24" (600 mm)
4" (100 mm)	6004AG_30	SPEC. TO 30" (750 mm)
6" (150 mm)	6006AG_30	SPEC. TO 30" (750 mm) & 36" (900 mm)
8" (200 mm)	6008AG_30	SPEC. TO 30" (750 mm) & 36" (900 mm)
10" (250 mm)	6010AG_30	SPEC. TO 30" (750 mm) & 36" (900 mm)
12" (300 mm)	6012AG_30	SPEC. TO 30" (750 mm) & 36" (900 mm)
15" (375 mm)	6015AG_30	SPEC. TO 30" (750 mm) & 36" (900 mm)
18" (450 mm)	6018AG_30	SPEC. TO 30" (750 mm) & 36" (900 mm)
24" (600 mm)	6024AG_36	SPEC. TO 36" (900 mm)

* The space in the _ part number is either "N" for N-12®, "S" for SDR, or "D" for DWV.

Add-A-Branch Kit Specification

Scope

Joint performance between all 4"-24" (100-600 mm) Add-a-Branch adapters and the Nyloplast Drain Basins provide a soil tight connection as specified in ASTM F 2306. Gaskets per ASTM F477

Installation

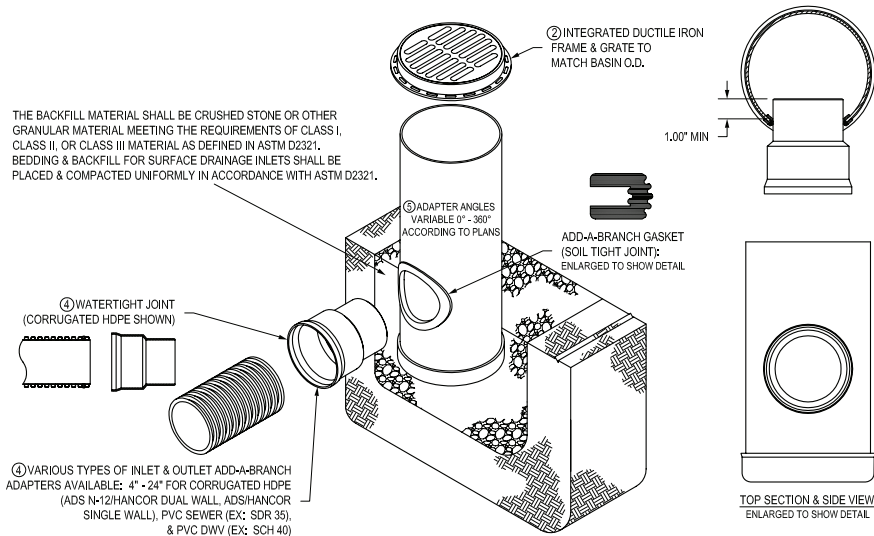
- Installation of Add-a-Branch structures shall be in accordance with manufacturer's recommended installation guidelines.
- It is recommended that the Add-A-Branch connection be 2 diameters smaller than basin diameter
- This type of field connection can be cut into the basin using jigsaw, sawzaw or other cutting tools. Just stick on the template and follow the cut pattern.
- If multiple branches require field install, follow minimum angle chart.

Angle Requirement Chart

Adapter Size In. (mm)	Basin Size in.(mm)							
	8 (200)	10 (250)	12 (300)	15 (375)	18 (450)	24 (600)	30 (750)	36 (900)
4 - 4 (100 - 100)	119°	96°	75°	60°	48°	38°	28°	20°
4 - 6 (100 - 150)	-	100°	87°	69°	55°	43°	32°	25°
4 - 8 (100 - 200)	-	-	102°	79°	63°	49°	36°	30°
4 - 10 (100 - 250)	-	-	-	91°	71°	55°	40°	34°
4 - 12 (100 - 300)	-	-	-	-	80°	61°	45°	37°
4 - 15 (100 - 375)	-	-	-	-	-	70°	51°	41°
4 - 18 (100 - 450)	-	-	-	-	-	-	58°	46°
4 - 24 (100 - 600)	-	-	-	-	-	-	-	59°
6 - 6 (150 - 150)	-	127°	100°	78°	62°	49°	36°	30°
6 - 8 (150 - 200)	-	-	114°	88°	70°	55°	40°	34°
6 - 10 (150 - 250)	-	-	-	100°	79°	61°	44°	37°
6 - 12 (150 - 300)	-	-	-	-	87°	67°	49°	40°
6 - 15 (150 - 375)	-	-	-	-	-	76°	55°	44°
6 - 18 (150 - 450)	-	-	-	-	-	-	62°	50°
6 - 24 (150 - 600)	-	-	-	-	-	-	-	62°
8 - 8 (200 - 200)	-	-	129°	98°	78°	60°	44°	37°
8 - 10 (200 - 250)	-	-	-	110°	86°	66°	49°	40°
8 - 12 (200 - 300)	-	-	-	-	95°	72°	53°	43°

Adapter Size In. (mm)	Basin Size in.(mm)							
	8 (200)	10 (250)	12 (300)	15 (375)	18 (450)	24 (600)	30 (750)	36 (900)
8 - 15 (200 - 375)	-	-	-	-	-	82°	59°	47°
8 - 18 (200 - 450)	-	-	-	-	-	-	67°	55°
8 - 24 (200 - 600)	-	-	-	-	-	-	-	71°
10 - 10 (250 - 250)	-	-	-	122°	95°	72°	53°	43°
10 - 12 (250 - 300)	-	-	-	-	103°	78°	57°	47°
10 - 15 (250 - 375)	-	-	-	-	-	88°	63°	53°
10 - 18 (250 - 450)	-	-	-	-	-	-	71°	62°
10 - 24 (250 - 600)	-	-	-	-	-	-	-	79°
12 - 12 (300 - 300)	-	-	-	-	112°	84°	61°	53°
12 - 15 (300 - 375)	-	-	-	-	-	94°	67°	60°
12 - 18 (300 - 450)	-	-	-	-	-	-	75°	71°
12 - 24 (300 - 600)	-	-	-	-	-	-	-	85°
15 - 15 (375 - 375)	-	-	-	-	-	103°	73°	69°
15 - 18 (375 - 450)	-	-	-	-	-	-	81°	77°
15 - 24 (375 - 600)	-	-	-	-	-	-	-	92°
18 - 18 (450 - 450)	-	-	-	-	-	-	87°	82°
18 - 24 (450 - 600)	-	-	-	-	-	-	-	103°
24 - 24 (600 - 600)	-	-	-	-	-	-	-	115°

Nyloplast Drain Basin with Add-a-branch



adspipe.com

1-800-821-6710