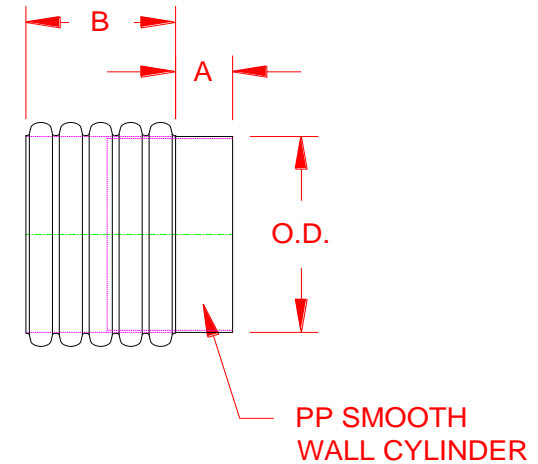


**HP STORM HP DUAL WALL DISSIMILAR MATERIAL
ADAPTER FITTING (PLAIN END)**

PART #	PIPE SIZE	A	B	OD
1221ANP	12 in (300 mm)	6.0 in (152 mm)	11.8 in (299 mm)	12.1 in (307 mm)
1521ANP	15 in (375 mm)	6.0 in (152 mm)	13.1 in (333 mm)	15.0 in (381 mm)
1821ANP	18 in (450 mm)	6.0 in (152 mm)	13.2 in (16 mm)	18.0 in (457 mm)
2421ANP	24 in (600 mm)	8.0 in (203 mm)	15.9 in (404 mm)	24.0 in (610 mm)
3021ANP	30 in (750 mm)	10.0 in (254 mm)	19.9 in (505 mm)	30.0 in (762 mm)
3621ANP	36 in (900 mm)	10.0 in (254 mm)	26.2 in (666 mm)	36.0 in (914 mm)
4221ANP	42 in (1050 mm)	10.0 in (254 mm)	25.7 in (653 mm)	41.3 in (1049 mm)
4821ANP	48 in (1200 mm)	10.0 in (254 mm)	26.2 in (665 mm)	47.6 in (1209 mm)
6021ANP	60 in (1500 mm)	10.0 in (254 mm)	30.4 in (773 mm)	59.5 in (1511 mm)



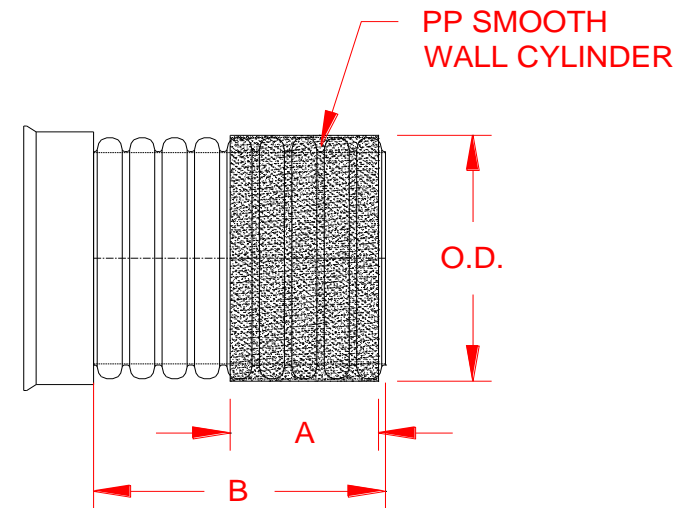
NOTE: ALL DIMENSIONS ARE NOMINAL

© 2021 Advanced Drainage Systems, Inc.

 Advanced Drainage Systems, Inc.	DRAWING #:	HP 14000
	DRAWN BY:	TJR 10/21/2009
	APPROVED BY:	
	REVISIONS:	TJR 7/20/2016

HP STORM DUAL WALL TO RCP MANHOLE ADAPTER FITTING (BELL END) WATER TIGHT CONNECTION

PART #	PIPE SIZE	A	B	OD
1222ANBP	12 in (300 mm)	12.0 in (305 mm)	49.0 in (1245 mm)	14.8 in (376 mm)
1522ANBP	15 in (375 mm)	14.5 in (368 mm)	48.8 in (1239 mm)	18.1 in (459 mm)
1822ANBP	18 in (450 mm)	19.5 in (495 mm)	47.6 in (1208 mm)	21.8 in (554 mm)
2422ANBP	24 in (600 mm)	23.3 in (591 mm)	47.7 in (1212 mm)	28.9 in (733 mm)



NOTE:
REQUIRES SERIES 65 GASKET (INCLUDED)
IN FIELD TO MAKE WT CONNECTION

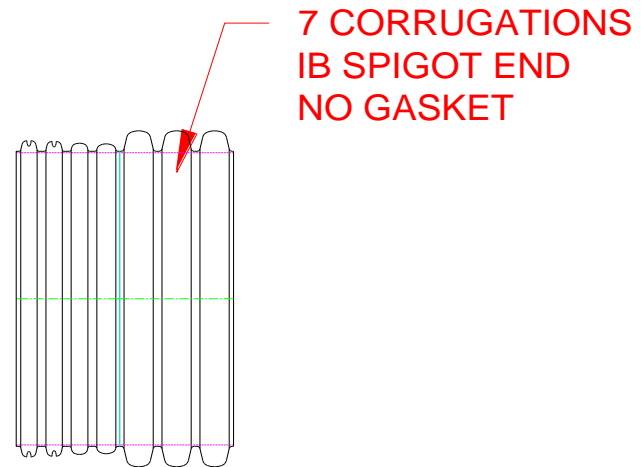
NOTE: ALL DIMENSIONS ARE NOMINAL

© 2021 Advanced Drainage Systems, Inc.

 Advanced Drainage Systems, Inc.	DRAWING #:	HP 14100
	DRAWN BY:	TJR 10/21/2009
	APPROVED BY:	
	REVISIONS:	TJR 7/20/2016

HP STORM DUAL WALL
12" - 60" JOINT PUSHER

PART #	PIPE SIZE
1208ANP	12 in (300 mm)
1508ANP	15 in (375 mm)
1808ANP	18 in (450 mm)
2408ANP	24 in (600 mm)
3008ANP	30 in (750 mm)
3608ANP	36 in (900 mm)
4208ANP	42 in (1050 mm)
4808ANP	48 in (12000 mm)
6008ANP	60 in (1500 mm)



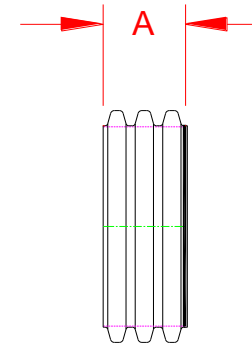
NOTE:
REQUIRES SERIES 65 GASKET (INCLUDED)
IN FIELD TO MAKE WT CONNECTION

NOTE: ALL DIMENSIONS ARE NOMINAL
© 2021 Advanced Drainage Systems, Inc.

	DRAWING #:	HP 14200
	DRAWN BY:	TJR 2/10/2010
	APPROVED BY:	
	REVISIONS:	TJR 7/20/2016

**HP STORM DUAL WALL FABRICATED END CAPS
12" - 60" (PLAIN END)**

PART #	PIPE SIZE	A
1201ANP	12 in (300 mm)	11.8 in (299 mm)
1501ANP	15 in (375 mm)	13.1 in (333 mm)
1801ANP	18 in (450 mm)	13.2 in (336 mm)
2401ANP	24 in (600 mm)	12.7 in (323 mm)
3001ANP	30 in (750 mm)	11.9 in (303 mm)
3601ANP	36 in (900 mm)	15.7 in (400 mm)
4201ANP	42 in (1050 mm)	15.4 in (391 mm)
4801ANP	48 in (12000 mm)	15.7 in (399 mm)
6001ANP	60 in (1500 mm)	18.0 in (457 mm)



NOTE: ALL DIMENSIONS ARE NOMINAL

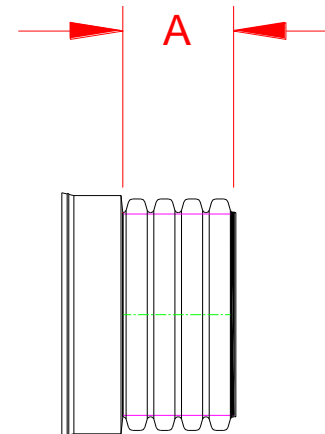
© 2021 Advanced Drainage Systems, Inc.



DRAWING #:	HP 14300	
DRAWN BY:	TJR	8/24/2010
APPROVED BY:		
REVISIONS:	TJR	7/20/2016

HP STORM DUAL WALL FABRICATED END CAPS
12" - 24" (BELL END)


PART #	PIPE SIZE	A
1201AN65BP	12 in (300 mm)	11.8 in (299 mm)
1501AN65BP	15 in (375 mm)	13.1 in (333 mm)
1801AN65BP	18 in (450 mm)	13.2 in (336 mm)
2401AN65BP	24 in (600 mm)	12.7 in (323 mm)



GASKET INCLUDED

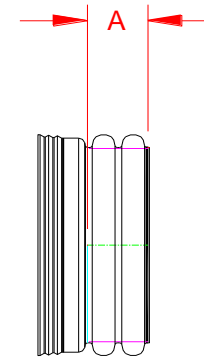
NOTE: ALL DIMENSIONS ARE NOMINAL

© 2021 Advanced Drainage Systems, Inc.

	DRAWING #:	HP 14400
	DRAWN BY:	TJR 8/25/2010
	APPROVED BY:	
	REVISIONS:	TJR 7/20/2016


**HP STORM DUAL WALL FABRICATED END CAPS
30" - 60" DIAMETER (IB BELL)**

PART #	PIPE SIZE	A	JOINT
3001AN65BP	30 in (750 mm)	9.4 in (238 mm)	WT
3601AN65BP	36 in (900 mm)	10.7 in (273 mm)	WT
4201AN65BP	42 in (1050 mm)	16.0 in (406 mm)	WT
4801AN65BP	48 in (1200 mm)	15.7 in (399 mm)	WT
6001AN65BP	60 in (1500 mm)	18.0 in (457 mm)	WT



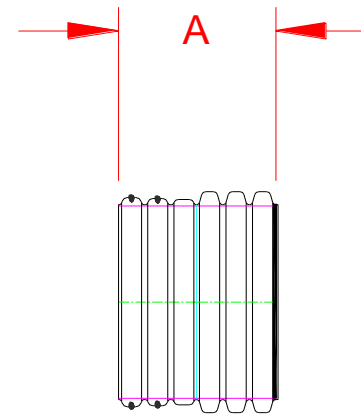
NOTE: ALL FITTINGS DIMENSIONS ARE FOR REFERENCE ONLY

© 2021 Advanced Drainage Systems, Inc.

 Advanced Drainage Systems, Inc.	DRAWING #:	HP 14500
	DRAWN BY:	TJR 8/25/2010
	APPROVED BY:	
	REVISIONS:	TJR 7/20/2016

**HP STORM DUAL WALL FABRICATED END CAPS
30" - 60" DIAMETER (IB SPIGOT)**

PART #	PIPE SIZE	A	JOINT
3001AN65GP	30 in (750 mm)	22.1 in (562 mm)	WT
3601AN65GP	36 in (900 mm)	25.8 in (656 mm)	WT
4201AN65GP	42 in (1050 mm)	24.9 in (633 mm)	WT
4801AN65GP	48 in (1200 mm)	26.3 in (669 mm)	WT
6001AN65GP	60 in (1500 mm)	32.2 in (817 mm)	WT



WT (INCLUDES 2 GASKETS)

NOTE: ALL FITTINGS DIMENSIONS ARE FOR REFERENCE ONLY

© 2021 Advanced Drainage Systems, Inc.

	DRAWING #:	HP 14600
	DRAWN BY:	TJR 8/25/2010
	APPROVED BY:	
	REVISIONS:	TJR 7/20/2016