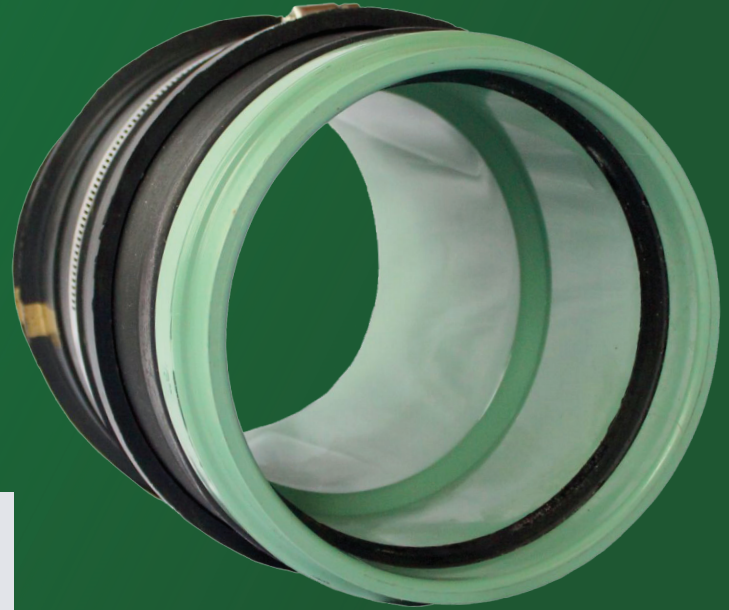


# Connect and Carry On.

## Inserta Tee® OneFit™

**Introducing the most versatile service connection ever built.**

Offering watertight\* reliability and an unmatched level of adaptability. Inserta Tee OneFit is a lateral service connection like no other.



### **Fits most pipes.**

Inserta Tee OneFit, available in 4", 6" & 8" (100, 150 & 200 mm), works with any type of pipe and fits any mainline pipe 10" (250 mm) or larger.

### **The only service connection you need.**

- Nyloplast® structures, precast, manholes and vaults
- StormTech® chambers
- Roof drain leaders
- Agricultural drainage
- Turf & recreation
- Retention/Detention systems
- Water quality systems



### **Performance**

Same superior performance and reliability as the original Inserta Tee.



### **Efficient**

Fast installation saves you time and money.



### **Accepted**

Inserta Tee OneFit is accepted by thousands of municipalities and engineers.



### **Affordable**

More cost-effective than fabricated and molded tees.



[adspipe.com](http://adspipe.com)

800-821-6710

# Inserta Tee OneFit



## Easy to install

OneFit installs in minutes with just a few easy steps, allowing you to move on to other parts of your project.



## Easy to stock

Number of SKUs are reduced for most applications.



## Hard to beat

Combining ground-breaking adaptability with reliable watertight\* connections, OneFit offers unmatched convenience and dependability. It's unlike any other connector on the market today.



## How does Inserta Tee OneFit compare to other options?

	Inserta Tee OneFit	Rubber Saddle Tee	Saddle	Other Product
<b>Testing</b>	Air testable in most pipes; meets the testing requirements of ASTM D3212 at 10.8 psi (74 kPa) and ASTM F2946. Field testable to ASTM F2487, C969 and F1417. Material meeting ASTM D3034 and ASTM F477.	Test information limited and does not meet ASTM D3212 at 10.8 psi (74 kPa).	Test information limited and does not meet ASTM D3212 at 10.8 psi (74 kPa).	Test information limited and does not meet ASTM D3212 at 10.8 psi (74 kPa).
<b>Installation</b>	Fast, effective and easy to install. Installation instructions ensure coring the perfect hole. Minimum protrusion will not interfere with post-installation inspection. No straps or bands to re-tighten. No need to disturb backfill around the host pipe.	No installation instructions on how to core the hole. Bands need to be installed around the host pipe and need to be re-tightened after 15 minutes. Backfill must be removed completely around the host pipe. Cannot be used on corrugated or ribbed host pipe.	Specific diameter hole required to keep booth from collapsing into the host pipe. Bands and straps must be tightened to specific torque and re-tightened after 15 minutes. Backfill must be removed completely around the host pipe. Cannot be used on corrugated or ribbed host pipe.	No installation instructions on how to cut the hole. Protrusion into mainline will interfere with post-installation video equipment or mandrels.
<b>Mainline Adaptability</b>	Will fit all common types and diameters of mainline pipe.	Limited to smooth exterior wall mainline pipes.	Limited to smooth exterior wall mainline pipes.	Limited mainline pipe types and diameters.
<b>Lateral Connection</b>	Bell connections to fit all common lateral pipe types.	Limited lateral sizes and types.	Limited lateral sizes and types.	Limited lateral sizes and types.

## Ready to connect?

Want to find out more about the innovative and versatile Inserta Tee OneFit? Contact us at 503-357-2110 or by visiting [ADSOneFit.com](http://ADSOneFit.com).

\* Watertight performance depends on the type and condition of the mainline pipe. Contact your ADS representative about your specific applications.

