

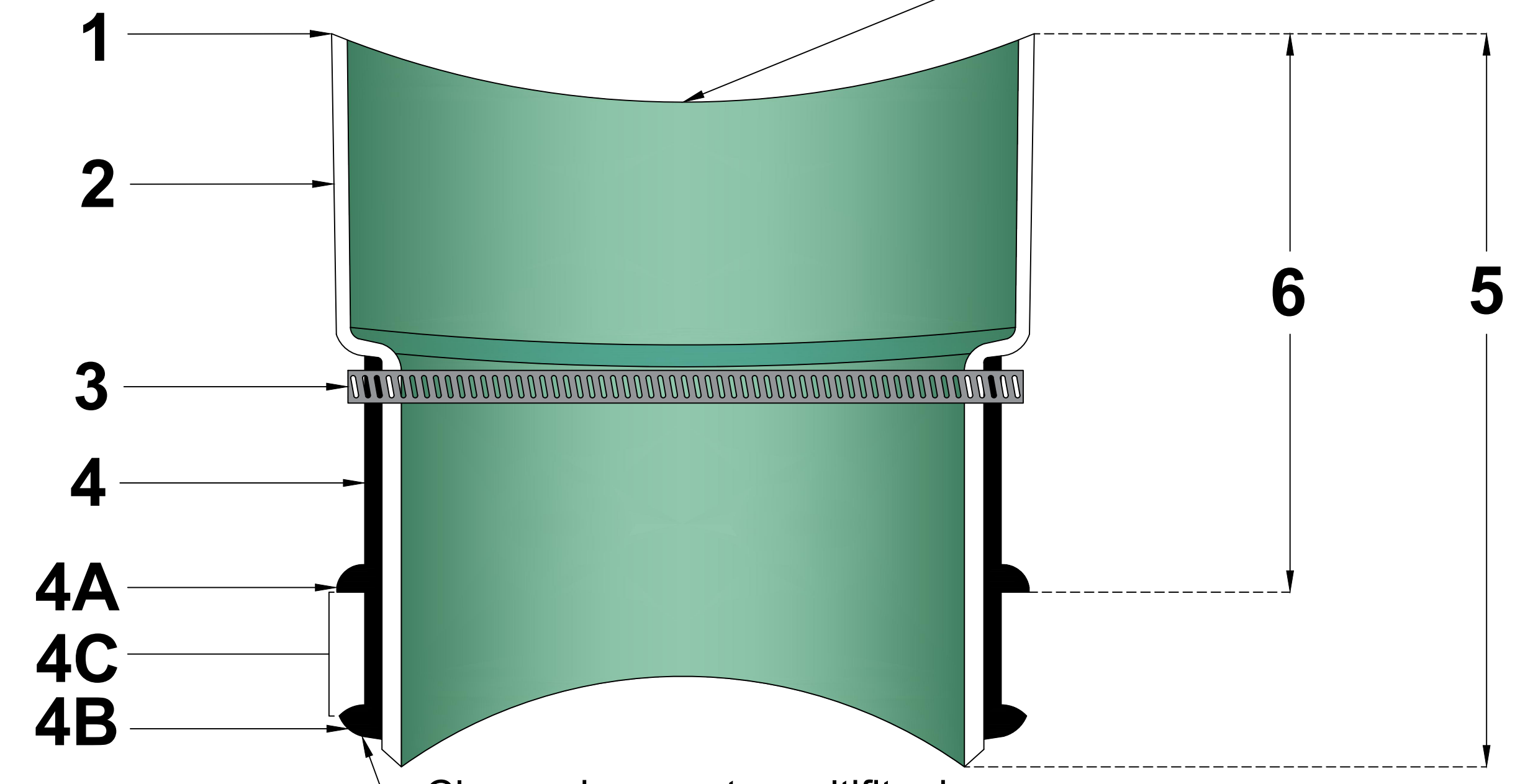
INSERTA TEE[®] MULTIFIT FOR N-12 LATERAL CONNECTIONS

For N-12 bell info, refer to STD-1105

What is the Inserta Tee MultiFit™?

Inserta Tee MultiFits are made for a specific lateral pipe type and size, and fit a size range of a specific mainline type.

PART #	PART NAME
1	PVC HUB
2	ADS VALLEY GASKET
3	S.S. BAND
4	RUBBER SLEEVE
4A	UPPER SEGMENT
4B	LOWER SEGMENT*
4C	MAINLINE WALL THICKNESS - REFER TO STD 1103
5	OVERALL LENGTH
6	EXTERIOR LENGTH



*WILL NOT APPEAR ON RUBBER SLEEVES FOR CONCRETE OR CLAY PIPE

N12 into N12 or HP			
Lateral	Mainline	Overall Length	Exterior Length
4"	6" - 8"	Use Traditional STD - 1105	
	10" - 12"	Use OneFit STD - 1111	
	15"+		
6"	8"	Use Traditional STD - 1105	
	10" - 12"	Use OneFit STD - 1111	
	15"+		
8"	12" - 15"	Use OneFit STD - 1111	
	18"+		
10"	18" - 24"	10.9"	8.0"
	30" - 60"	12.3"	8.0"
12"	18" - 24"	10.7"	8.0"
	30" - 60"	12.1"	8.0"
15"	24" - 60"	15.1"	10.1"
18"	30" - 60"	16.2"	11.2"
24"	36" - 60"	20.3"	16.1"

N12 into Concrete/Clay			
Lateral	Mainline	Overall Length	Exterior Length
4"	6" - 8"	Use Traditional STD - 1105	
	10" - 12"	5.7"	4.5"
	15"+	6.3"	4.5"
6"	8"	Use Traditional STD - 1105	
	10" - 12"	5.7"	4.5"
	15"+	6.1"	4.5"
8"	15" - 24"	9.9"	7.9"
	30"+	9.9"	7.9"
10"	18" - 24"	10.1"	6.8"
	30"+	11.3"	6.8"
12"	18" - 24"	11.2"	7.8"
	30"+	12.4"	7.8"
15"	24" - 60"	15.1"	10.1"
18"	30" - 60"	16.2"	11.2"
24"	36" - 60"	20.3"	16.1"

N12 into SDR35 PVC		
Lateral	Mainline	
4"	6" - 8"	Use Traditional STD - 1105
	10" - 12"	Use OneFit STD - 1111
	15"+	
6"	8"	Use Traditional STD - 1105
	10" - 12"	Use OneFit STD - 1111
	15"+	
8"	12" - 15"	Use OneFit STD - 1111
	18"+	
10" - 24"	Use Traditional STD - 1105	

Single Wall HDPE into N12			
Lateral	Mainline	Overall Length	Exterior Length
4"	Use Onefit STD - 1111		
6"	Use Onefit STD - 1111		
8"	12" - 15"	10.9"	8.9"
	18" - 24"	10.9"	8.9"

NOTE: FOR INSTALLATION INSTRUCTIONS, REFER TO DETAIL STD-1100. FOR PROTRUSION INFORMATION, REFER TO DETAIL STD-1101. FOR HOLE SAW INFORMATION, REFER TO DETAIL STD-1102.

ADVANCED DRAINAGE SYSTEMS, INC. ("ADS") HAS PREPARED THIS DETAIL BASED ON INFORMATION PROVIDED TO ADS. THIS DRAWING IS INTENDED TO DEPICT THE COMPONENTS AS REQUESTED. ADS HAS NOT PERFORMED ANY ENGINEERING OR DESIGN SERVICES FOR THIS PROJECT, NOR HAS ADS INDEPENDENTLY VERIFIED THE INFORMATION SUPPLIED. THE INSTALLATION DETAILS PROVIDED HEREIN ARE GENERAL RECOMMENDATIONS AND ARE NOT SPECIFIC FOR THIS PROJECT. THE DESIGN ENGINEER SHALL REVIEW THESE DETAILS PRIOR TO CONSTRUCTION. IT IS THE DESIGN ENGINEERS RESPONSIBILITY TO ENSURE THE DETAILS PROVIDED HEREIN MEETS OR EXCEEDS THE APPLICABLE NATIONAL, STATE, OR LOCAL REQUIREMENTS AND TO ENSURE THAT THE DETAILS PROVIDED HEREIN ARE ACCEPTABLE FOR THIS PROJECT.

INSERTA TEE MULTIFIT FOR
N-12 LATERAL CONNECTIONS

DRAWING NUMBER STD-1112A



4640 TRUEMAN BLVD
HILLIARD, OH 43026

DRAWN BY: HAK
DATE: 03/26/24
OK'S BY: ENG
SCALE: NTS
SHEET: 1