

Aquabox

Aquabox is a modular underground system designed for sustainable stormwater management. The modules are delivered palletized to the project site and assembled in place.

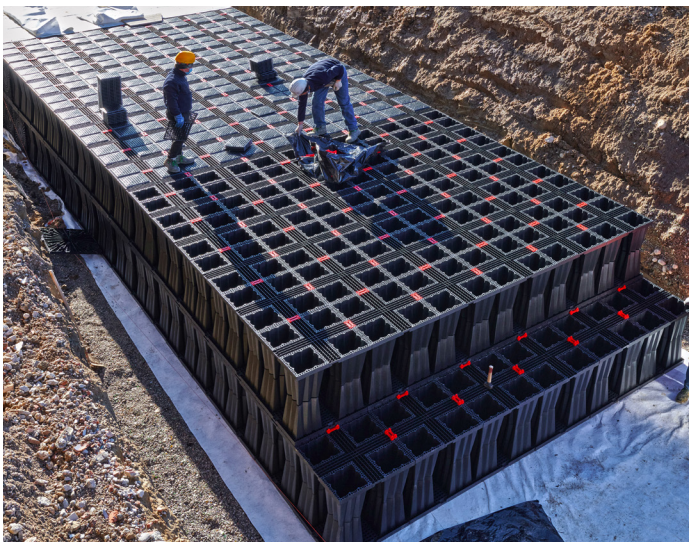
The Aquabox system is designed primarily to be used under parking lots, thus maximizing land usage for private (commercial) and public applications. The Aquabox can also be used in conjunction with Green Infrastructure, thus enhancing the performance and extending the service life of these practices.

Features

- Fast and easy installation
- High load resistance
- Open and flexible system that can be used for both detention and retention (infiltration) applications
- 96% void
- 29.5" x 29.5" x 31.5" (750 x 750 x 800 mm) modular modules that is easy to manage
- 15.24ft³ (0.43 m³) per Aquabox module

Benefits

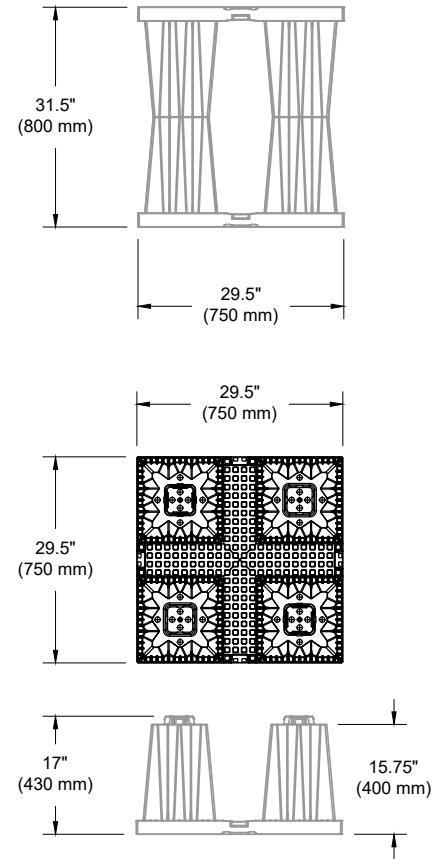
- Internal configuration makes the system easily accessible for inspection, maintenance & cleaning.
- Modules are stackable, allowing 16,000 ft³ (453.1 m³) of installed volume to be transported in a single truckload



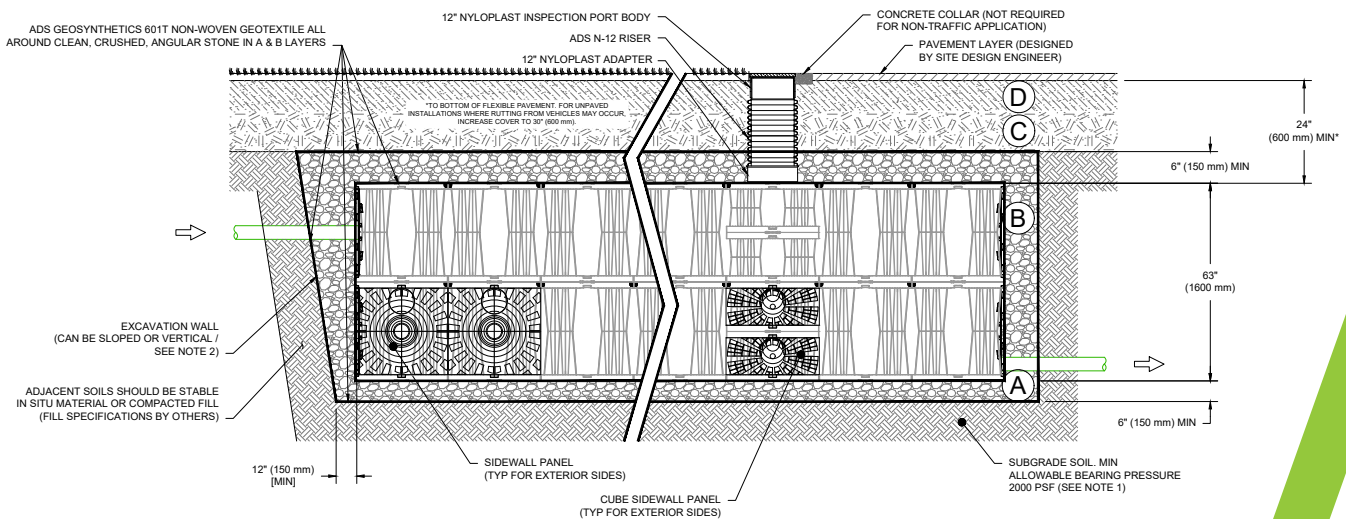
Aquabox Specifications

Aquabox is designed for the passage of heavy vehicles, load class HS20. The basin is equipped with access points for inspection and cleaning of the basin.

Dimensions	29.5" x 29.5" x 31.5" (750 x 750 x 800 mm)
Weight	45 lbs (20.4 kg)
Material	Recycled polypropylene with glass additive
Net volume	15.24 ft ³ (0.43 m ³)
Void ratio	96%
Pallet Size	385.8" x 60.0" x 101.6" (9800 x 1520 x 2580 mm)
Number of pieces per pallet	80



Cross Section



adspipe.com

800-821-6710