

Mar Mac[®] Polyseal Repair Coupler Installation Guide



Step 1: Clean Pipe End

Clean and dry the external surface of the joint to ensure foreign materials do not interfere with direct contact between the coupler and the joint.



Step 2: Inspect Coupler

Open and unroll the coupler to ensure it is damage free. Lay the coupler mastic side up and take note of the position of the compression bands.



Step 3: Position and Dry Fit

Place coupler beneath the pipe joint. Line up the compression bands so they are centered with the pipe configurations.



Step 4: Remove Main Release Film

Peel the release film from the mastic side of the coupler, ensuring the smaller protective release film remains in place.



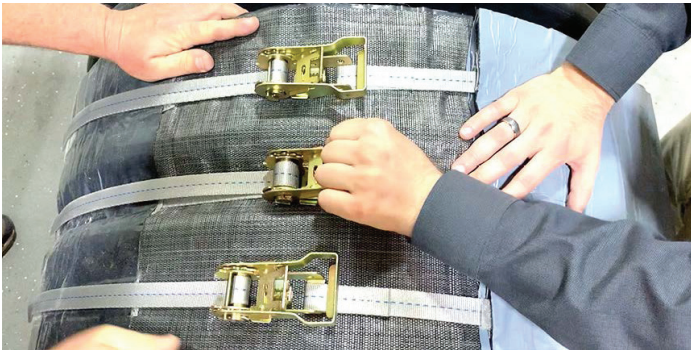
Step 5: Apply to Pipe

Beginning with non-ratchet end of coupler, press the mastic side to pipe. Keep the coupler straight and taut, continue to apply the mastic to the pipe until the ratchet end is reached.



Step 6: Thread Straps

Feed the compression band adjustable ends (tails) into the ratchet tensioning pins.



Step 7: Tighten Straps

Start with center compression band, move the ratchet handle back and forth until the strap is tight and sunken into the corrugation of the pipe. Repeat process with remaining bands.



Step 8: Remove Flap Release Film

Remove the release film from the under side of the protective closing flap, ensuring the ratchet handles are in the down position.



Step 9: Secure Flap

Cover the exposed ratchets and straps with the flap, while keeping the material taut.



Step 10: Smooth Flap

Firmly press down on the entire surface area of the protective flap, ensuring the mastic is fully secured.

Storage

PolySeal Couplers should be stored carefully in their original packaging, out of direct sunlight and protected from the elements. Materials should be kept away from direct heat, sparks and open flame. For optimum results, couplers should be stored in a tepid (60°-80° F [15.5°-26.6° C]) environment prior to installation.

