

NYLOPLAST DRAIN BASIN CONSTRUCTION PROTECTION DETAIL - OPTION 2

(EROSION CONTROL STRUCTURE DETAIL)

DUCTILE IRON GRATE OPTIONAL DURING CONSTRUCTION. FILTER FABRIC CAN BE APPLIED UNDER GRATE TO FILTER STORM RUNOFF

PERFORATED RISER SECTION PER MANUFACTURER'S PERFORATION SCHEDULE UNLESS NOTED OTHERWISE (RISER SECTION HEIGHTS CAN VARY)

SAFETY OR EROSION CONTROL FENCING TO MARK STRUCTURE DURING CONSTRUCTION

FILTER FABRIC RECOMMENDED TO LIMIT MIGRATION OF FINES INTO THE SYSTEM

RIP RAP OR STONE AROUND PERFORATED RISER SECTION DURING CONSTRUCTION TO ALLOW FOR FILTRATION OF STORM RUNOFF

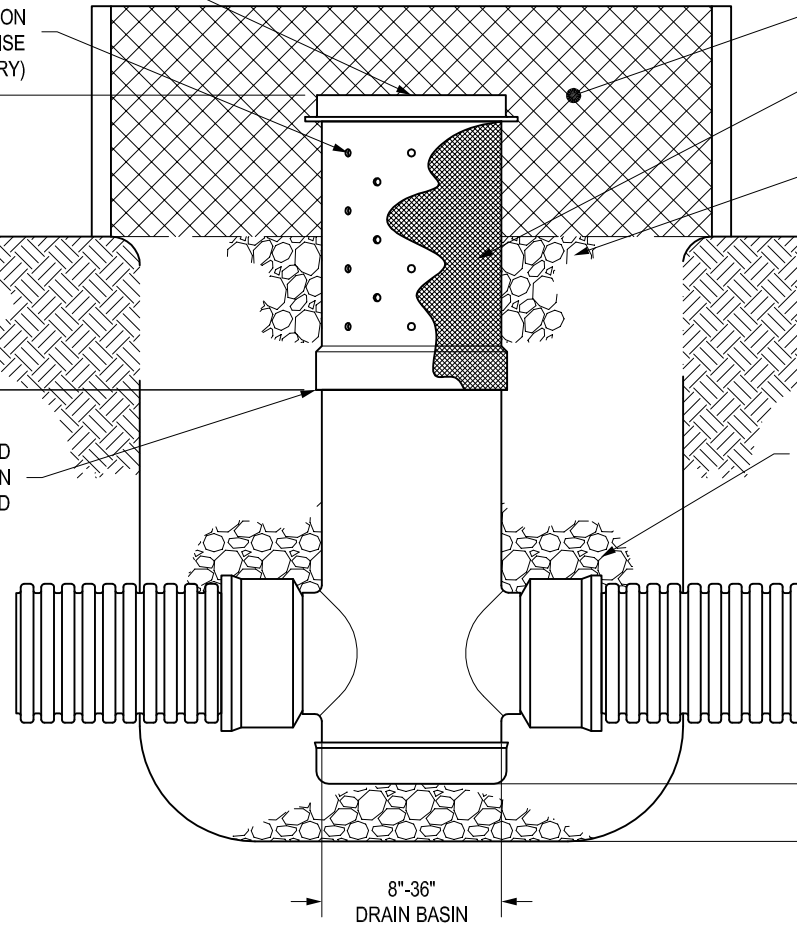
24" TYPICAL

12"

GRADE

RISER SECTION IS NOT TO BE GLUED SO BASIN CAN MATCH GRADE WHEN FINAL INSTALLATION IS REQUIRED

THE BACKFILL MATERIAL SHALL BE CRUSHED STONE OR OTHER GRANULAR MATERIAL MEETING THE REQUIREMENTS OF CLASS I, CLASS II, OR CLASS III MATERIAL AS DEFINED IN ASTM D2321. BEDDING & BACKFILL FOR SURFACE DRAINAGE INLETS SHALL BE PLACED & COMPACTED UNIFORMLY IN ACCORDANCE WITH ASTM D2321.



4" MIN ON 8"-24"
6" MIN ON 30" & 36"

8"-36"
DRAIN BASIN

- 1 - PERFORATED RISER SECTION IS TO BE REMOVED AND REPLACED WITH SOLID RISER FOLLOWING THE FINAL SITE GRADING. IF THE PERFORATED RISER SECTIONS ARE DAMAGED DURING CONSTRUCTION, THEY CAN BE EASILY REPLACED WITH MINIMAL DAMAGE TO MAIN BASIN BODY / BASE SECTION.
- 2 - FRAMES & GRATES/SOLID COVERS ARE TO BE INSTALLED ONCE EROSION CONTROL STRUCTURE IS NO LONGER NEEDED.
- 3 - PERFORATION SCHEDULE WILL MEET NYLOPLAST SPECIFICATIONS OUTLINED IN DRAWING 7001-110-008 UNLESS NOTED OTHERWISE.
- 4 - DRAIN BASIN TO BE CUSTOM MANUFACTURED ACCORDING TO PLAN DETAILS. RISERS ARE NEEDED FOR BASINS OVER 84" DUE TO SHIPPING RESTRICTIONS. IN THE EVENT A BASIN IS DAMAGED DURING CONSTRUCTION, RISER SECTIONS CAN BE USED FOR FIELD REPAIRS.

THIS PRINT DISCLOSES SUBJECT MATTER IN WHICH NYLOPLAST HAS PROPRIETARY RIGHTS. THE RECEIPT OR POSSESSION OF THIS PRINT DOES NOT CONFER, TRANSFER, OR LICENSE THE USE OF THE DESIGN OR TECHNICAL INFORMATION SHOWN HEREIN REPRODUCTION OF THIS PRINT OR ANY INFORMATION CONTAINED HEREIN, OR MANUFACTURE OF ANY ARTICLE HEREFROM, FOR THE DISCLOSURE TO OTHERS IS FORBIDDEN, EXCEPT BY SPECIFIC WRITTEN PERMISSION FROM NYLOPLAST.

©2007 NYLOPLAST

| | | |
|----------|----------|-------------------------|
| DRAWN BY | NMH | MATERIAL |
| DATE | 10-02-18 | |
| APPD BY | NMH | PROJECT NO./NAME |
| DATE | 10-02-18 | |
| DWG SIZE | A | SCALE 1:20 SHEET 1 OF 1 |

| | | |
|---|---|-------|
|  | 3130 VERONA AVE BUFORD, GA 30518 PHN (770) 932-2443 FAX (770) 932-2490 www.nyloplast-us.com | |
| | TITLE CONSTRUCTION EROSION CONTROL DRAIN BASIN DETAIL | |
| DWG NO. | 7001-110-553 | REV A |