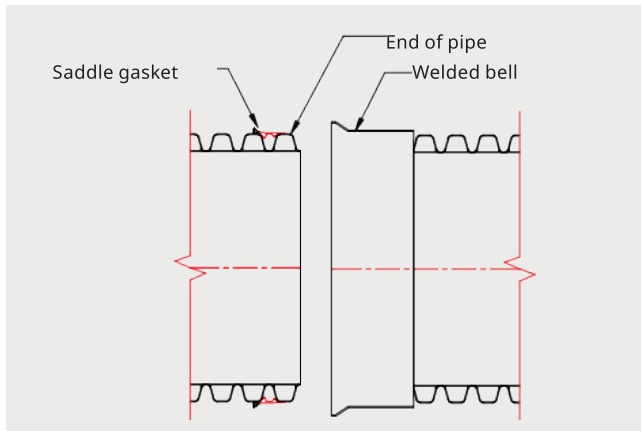


# 12"-18" Saddle Gasket Installation

The saddle gasket for diameters 12"-18" (300-450 mm) is used for welded bells, bell-bell couplers, Nyloplast drains and 12" (300 mm) injection molded fittings..

## Welded bell application:



## Proper gasket orientation:

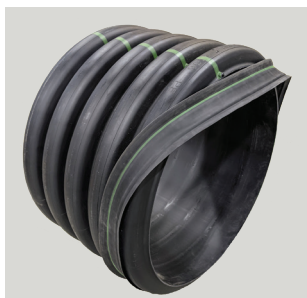


## Preparing gasket and pipe for installation:

- Clean dirt and debris from gasket and pipe surface.
- Make sure gasket seal is in proper orientation (see above).
- NOTE: Pre-stretching gasket before installation is NOT recommended.



**STEP 1:** Initiate installation with gasket splice on bottom of pipe. NOTE: Gasket installation is more difficult in colder temperatures.



**STEP 2:** Slide gasket onto corrugation until it is difficult to stretch (typically ten and two o'clock positions). NOTE: Do not use a prybar on gasket splice.



**STEP 3:** Work the gasket into place. Once the long leg of the gasket is on top of corrugation, pull the gasket seal into place.



**STEP 4:** Check final location of gasket to make sure the gasket is properly positioned completely around the pipe.

