

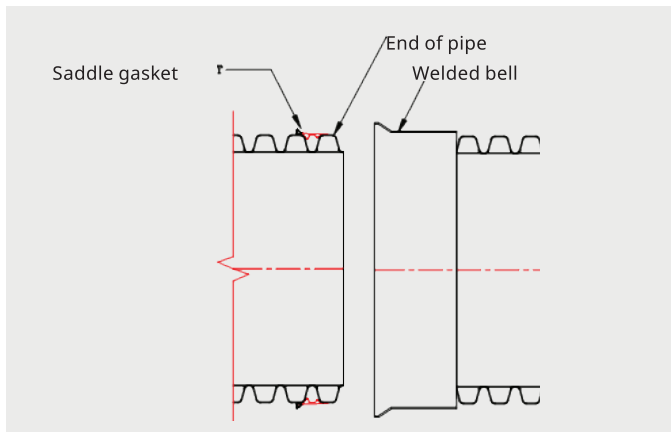
# 12"-18" Saddle Gasket Installation Guide



View 12"-18"  
install video.

The saddle gasket for diameters 12"-18" (300-450 mm) is used for welded bells, bell-bell couplers, Nyloplast® drains and 12" (300 mm) injection molded fittings.

## Welded bell application



## Proper gasket orientation



## Preparing gasket and pipe for installation:

- Clean dirt and debris from gasket and pipe surface.
- Make sure gasket seal is in proper orientation (see above).

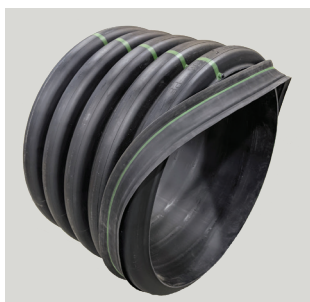
**NOTE:** Pre-stretching gasket before installation is NOT recommended.



**STEP 1:** Initiate installation with gasket splice on bottom of pipe. **NOTE:** Gasket installation is more difficult in colder temperatures.



**STEP 3:** Work the gasket into place. Once the long leg of the gasket is on top of corrugation, pull the gasket seal into place.



**STEP 2:** Slide gasket onto corrugation until it is difficult to stretch (typically ten and two o'clock positions). **NOTE:** Do not use a prybar on gasket splice.



**STEP 4:** Check final location of gasket to make sure the gasket is properly positioned completely around the pipe. The green stripe should be positioned on the second corrugation.

