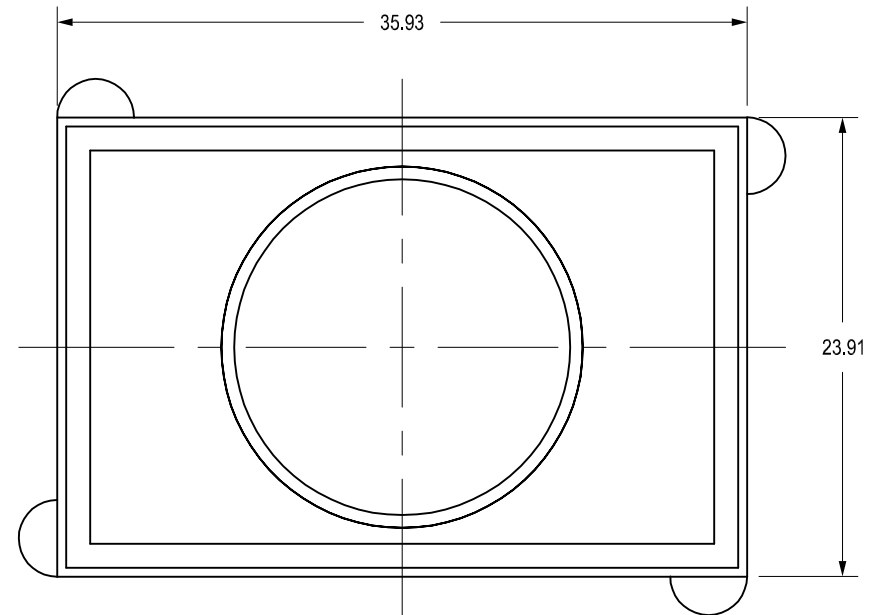
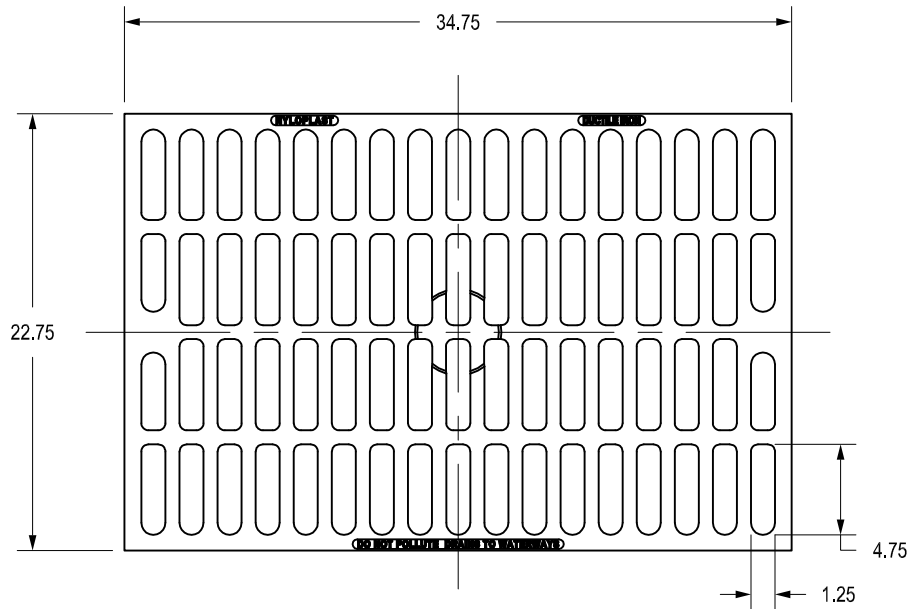
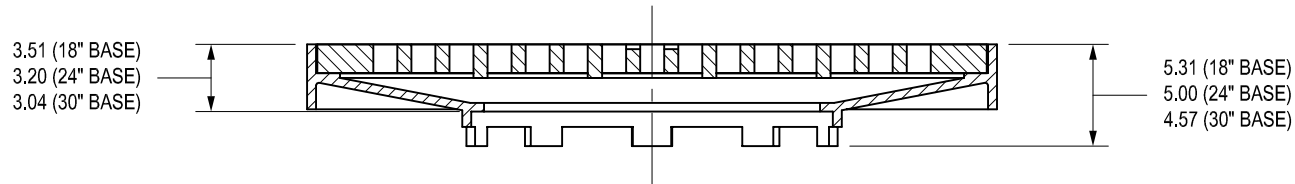


# 3299CGR

APPROX. DRAIN AREA = 386.10 SQ IN  
 \*APPROX. WEIGHT OF GRATE = 153.00 LBS



DIMENSIONS ARE FOR REFERENCE ONLY

ACTUAL DIMENSIONS MAY VARY

DIMENSIONS ARE IN INCHES

GRATE MEETS H-25 LOAD RATING

GRATE OPENINGS ARE MEET BICYCLE SAFE REQUIREMENTS

QUALITY: MATERIALS SHALL CONFORM TO ASTM A536 GRADE 70-50-05

PAIN: CASTINGS ARE FURNISHED WITH A BLACK PAINT

LOCKING DEVICE AVAILABLE UPON REQUEST SEE DRAWING NO.

7001-110-185

\*WEIGHT DOES NOT INCLUDE GRATE

FRAME WITH 18" BASE: APPROX. 123.50 LBS


FRAME WITH 24" BASE: APPROX. 130.00 LBS

FRAME WITH 30" BASE: APPROX. 115.50 LBS

THIS PRINT DISCLOSES SUBJECT MATTER IN WHICH NYLOPLAST HAS PROPRIETARY RIGHTS. THE RECEIPT OR POSSESSION OF THIS PRINT DOES NOT CONFER, TRANSFER, OR LICENSE THE USE OF THE DESIGN OR TECHNICAL INFORMATION SHOWN HEREIN REPRODUCTION OF THIS PRINT OR ANY INFORMATION CONTAINED HEREIN, OR MANUFACTURE OF ANY ARTICLE HEREFROM, FOR THE DISCLOSURE TO OTHERS IS FORBIDDEN, EXCEPT BY SPECIFIC WRITTEN PERMISSION FROM NYLOPLAST.

©2013 NYLOPLAST

DRAWN BY	EBC	MATERIAL
DATE	03-02-06	DUCTILE IRON
REVISED BY	NMH	PROJECT NO./NAME
DATE	7-26-18	
DWG SIZE	A	SCALE 1:10 SHEET 1 OF 1

	3130 VERONA AVE BUFORD, GA 30518 PHN (770) 932-2443 FAX (770) 932-2490 www.nyloplast-us.com	
	TITLE	
2 FT X 3 FT ROAD & HIGHWAY 2 PIECE GRATE ASSEMBLY		
DWG NO.	7001-110-226	REV E