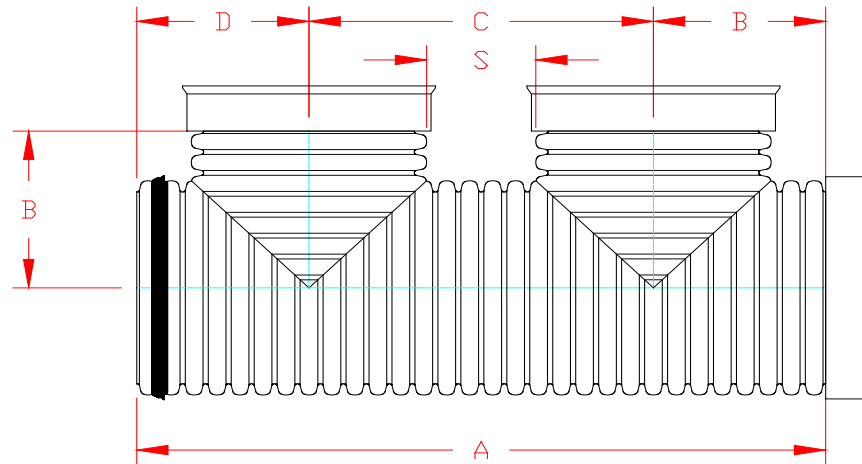


**HP STORM DUAL WALL FABRICATED "WATER TIGHT" "BELL END"
DOUBLE MANIFOLD 12" - 18" & 24" DIAMETER**

PART #	PIPE SIZE	A	B	C	D	S
1252AN65BP	12 in (300 mm)	47.3 in (1200 mm)	9.8 in (250 mm)	23.6 in (600 mm)	13.8 in (350 mm)	9.1 in (230 mm)
1552AN65BP	15 in (375 mm)	56.9 in (1446 mm)	12.0 in (304 mm)	28.4 in (721 mm)	16.6 in (421 mm)	10.7 in (271 mm)
1852AN65BP	18 in (450 mm)	70.9 in (1801 mm)	14.8 in (375 mm)	35.4 in (900 mm)	20.7 in (525 mm)	14.1 in (357 mm)
2452AN65BP	24 in (600 mm)	82.2 in (2087 mm)	17.4 in (441 mm)	41.1 in (1043 mm)	23.7 in (602 mm)	12.6 in (321 mm)



BELL END GASKET NOT INCLUDED WITH FITTING PLEASE ORDER SEPARATELY.

NOTE: ALL FITTINGS DIMENSIONS ARE FOR REFERENCE ONLY

 Advanced Drainage Systems, Inc.	DRAWING #:	13275
	DRAWN BY:	TJR 10/13/2016
	APPROVED BY:	
	REVISIONS:	