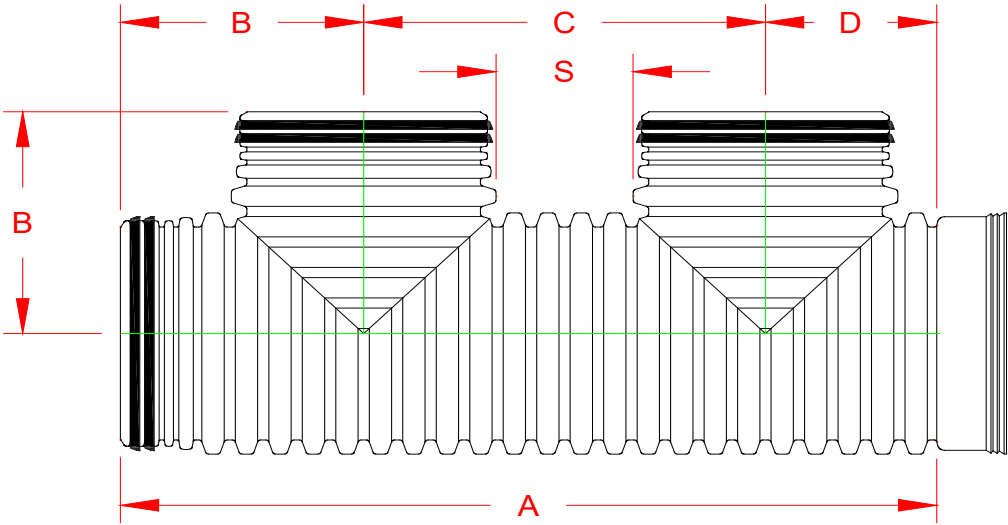


**HP STORM DUAL WALL FABRICATED "WATER TIGHT" "IN-LINE SPIGOT END"
DOUBLE MANIFOLD 21" & 30" - 60" DIAMETER**

PART #	PIPE SIZE	A	B	C	D	S
2152AN65GP	21 in (525 mm)	83.2 in (2113 mm)	25.2 in (639 mm)	41.5 in (1053 mm)	16.6 in (421 mm)	16.7 in (425 mm)
3052AN65GP	30 in (750 mm)	110.0 in (2795 mm)	33.6 in (854 mm)	54.4 in (1381 mm)	22.0 in (558 mm)	18.9 in (481 mm)
3652AN65GP	36 in (900 mm)	128.0 in (3252 mm)	38.2 in (969 mm)	63.0 in (1601 mm)	26.9 in (682 mm)	21.5 in (546 mm)
4252AN65GP	42 in (1050 mm)	145.9 in (3705 mm)	43.4 in (1101 mm)	72.2 in (1833 mm)	30.3 in (770 mm)	24.8 in (630 mm)
4852AN65GP	48 in (1200 mm)	166.8 in (4238 mm)	47.9 in (1216 mm)	84.2 in (2139 mm)	34.8 in (883 mm)	30.0 in (763 mm)
6052AN65GP	60 in (1500 mm)	194.0 in (4928 mm)	57.2 in (1454 mm)	96.8 in (2458 mm)	40.0 in (1017 mm)	29.7 in (754 mm)



NOTE: ALL FITTINGS DIMENSIONS ARE FOR REFERENCE ONLY

	DRAWING #:	13350
	DRAWN BY:	TJR 10/13/2016
	APPROVED BY:	
	REVISIONS:	