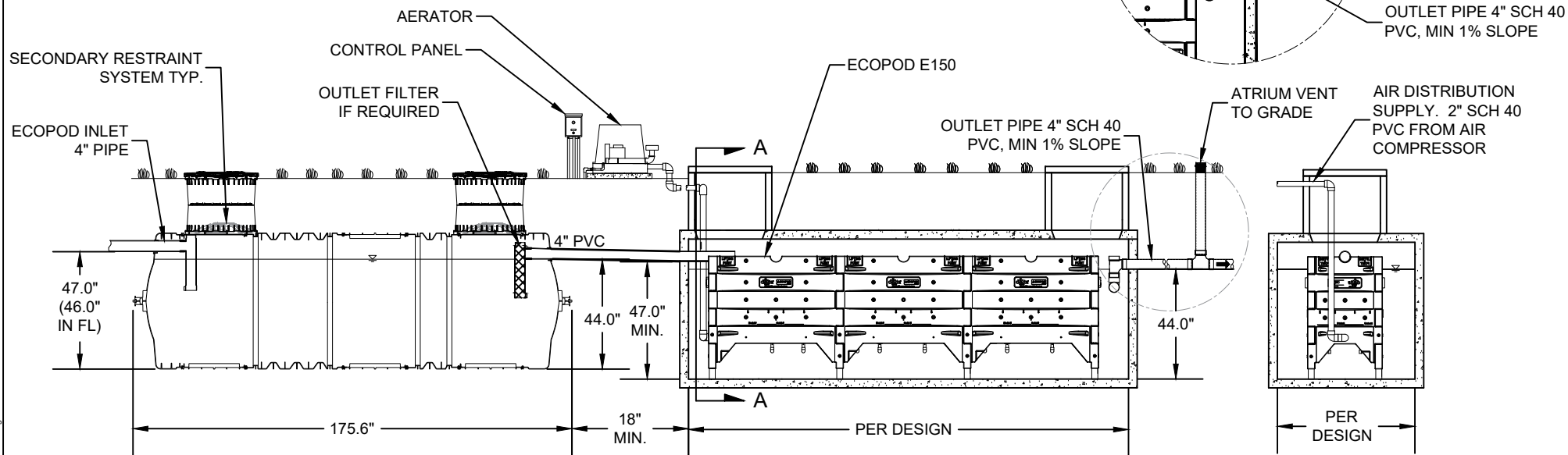


NOTES:

1. INSTALL TANK PER MANUFACTURERS INSTRUCTIONS.
2. FOR ECOPOD INSTALLATION WITH PRECAST TANKS CONTACT INFILTRATOR FOR MINIMUM SPECIFICATIONS.
3. FOR DESIGNS WITH TREATMENT CAPACITIES GREATER THAN 1,500 GPD, CONTACT INFILTRATOR FOR REVIEW.
4. OPTIONAL SCHEDULE 40 PVC INSERT INSTALLED TO RAISE ECOPOD TO INLET AND OUTLET HEIGHT REQUIREMENTS.



PRIMARY TANK CM-1060

PRECAST CONCRETE TANK

SINGLE OR DUAL COMPARTMENT  
TANK AS REQUIRED PER CODE

SECTION VIEW

SECTION A-A

ELECTRICAL REQUIREMENTS

TREATMENT PLANT	E150N
AERATOR	IWT MODEL K03
MOTOR FULL LOADS AMP	7.1
MEASURED OPERATING WATTS	475
ELECTRICAL REQUIREMENTS	115V - 1PH

ECOPOD SPECIFICATIONS

TREATMENT PLANT	E150N
TREATMENT CAPACITY (GPD)	1,500
MIN. PRIMARY TANK VOLUME (GAL.)	1,500
REACTOR TANK VOLUME (GAL.)	2,100
MEDIA SIZE	12" X 2" X 2"
AIR REQUIREMENTS	36 CFM



Part of **ADS**

INFILTRATOR WATER TECHNOLOGIES, LLC

4 BUSINESS PARK RD, OLD SAYBROOK, CT 06475

WWW.INFILTRATORWATER.COM

PHONE: (800) 221-4436 / EMAIL: INFO@INFILTRATORWATER.COM

**ECOPOD-N<sup>®</sup>**

**E150NCA**

PART NO.

**E150N**

DATE

10/10/2025

SCALE

**1:60**

SHEET NO.

**01 of 01**