

Aquabox Half Module

Aquabox is a globally proven modular underground system designed for sustainable stormwater management. Systems have been installed in 25 countries.

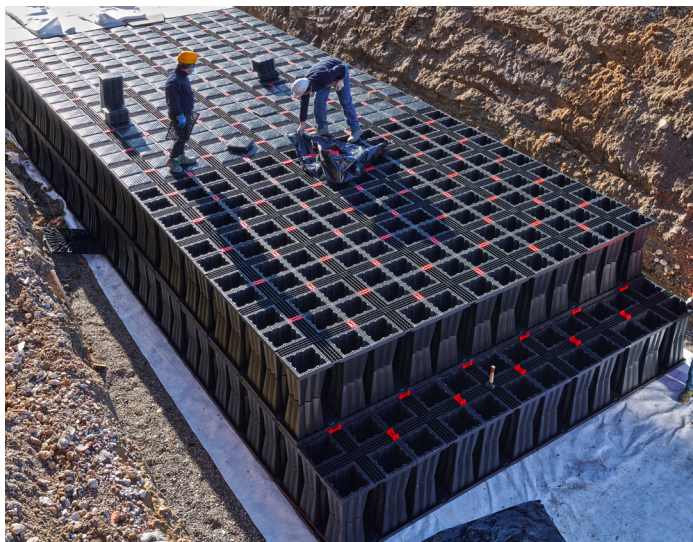
Aquabox Half Modules are optimized for sites with shallow cover constraints, making them ideal for applications where vertical space is limited—such as beneath roadways, parking lots, or landscaped areas with tight grading requirements. They can also be used in conjunction with Green Infrastructure, supporting performance and longevity even in low-profile installations.

Why Aquabox

- Structurally superior compared to the majority of crates on the market today
- Fast and easy to install, allows for a high load resistance, and has a 94% void
- Manufactured from recycled polypropylene with fiberglass additive
- Adaptable components enable highly customized layouts, creating the perfect fit for complex sites

Features

- Fast and easy installation
- High load resistance
- Open and flexible system that can be used for both detention, retention (infiltration) and water harvesting applications
- 94% void
- 29.5" x 29.5" x 18" (750 x 750 x 450 mm) modular modules that are easy to manage
- 8.44 ft³ (0.24 m³) per Aquabox Half Module



Benefits

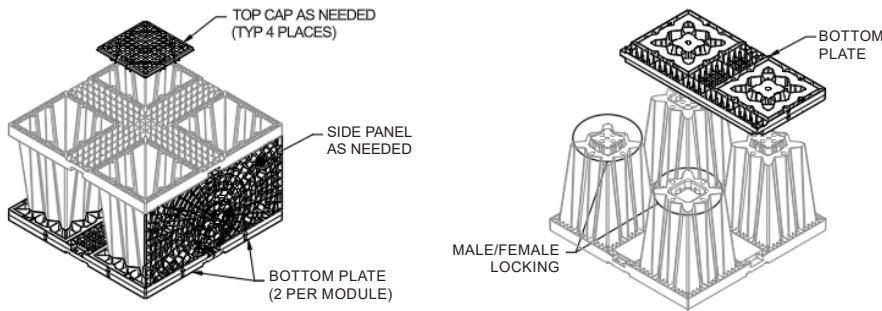
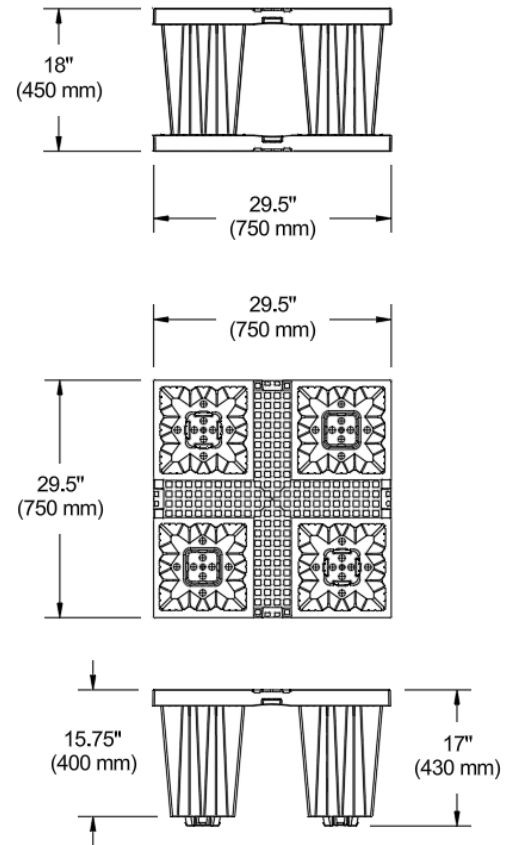
- Internal configuration makes the system easily accessible for inspection, maintenance & cleaning.
- Modules are stackable, allowing up to 16,000 ft³ (453.1 m³) of installed volume to be transported in a single truckload
- Designed for the passage of heavy vehicles, load class HS20
- Internal configuration makes the system easily accessible for inspection, maintenance & cleaning.



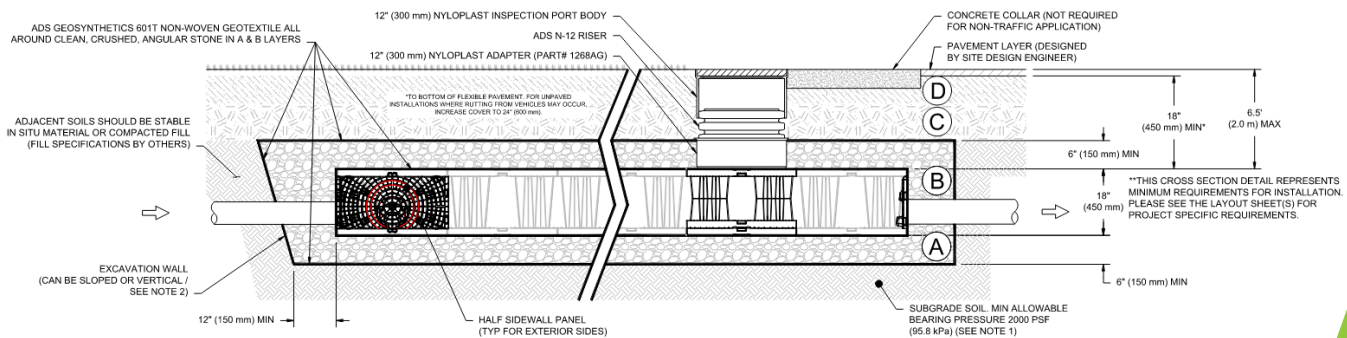
Aquabox Half Module Specifications

Dimensions	29.5" x 29.5" x 18" (750 x 750 x 450 mm)
Weight*	34.5 lbs (15.7 kg)
Material	Recycled polypropylene with glass additive
Net volume	8.44 ft ³ (0.24 m ³)
Void	94%
Pallet Size	30" x 60" x 100" (800 x 1600 x 2600 mm)
Number of pieces per pallet	80

*All measures are ±10%



Cross Section



Visit adspipe.com/water-management-solutions/detention-infiltration/aquabox for more information

