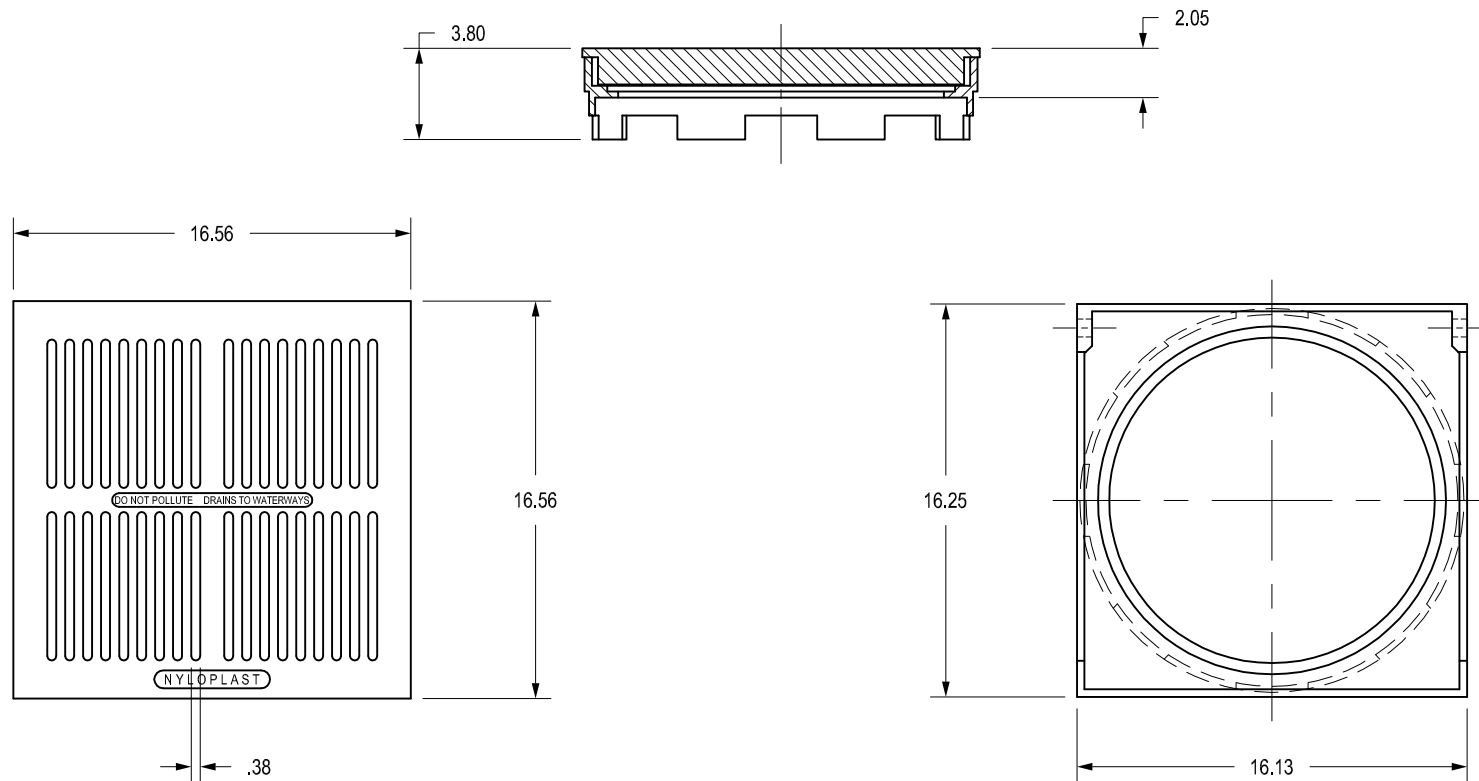


1599CGPB

APPROX. DRAIN AREA = 81.25 SQ IN
 APPROX. WEIGHT WITH FRAME = 51.05 LBS



DIMENSIONS ARE FOR REFERENCE ONLY

ACTUAL DIMENSIONS MAY VARY

DIMENSIONS ARE IN INCHES

QUALITY: FRAME SHALL CONFORM TO ASTM A536 GRADE 70-50-05

PAINT: FRAME IS FURNISHED WITH A BLACK PAINT

SIZE OF OPENING MEETS REQUIREMENTS OF AMERICAN DISABILITY

ACT AS STATED IN FEDERAL REGISTER PART III, DEPARTMENT OF


JUSTICE, 28 CFR PART 36.

LOCKING DEVICE AVAILABLE UPON REQUEST SEE DRAWING NO.

7001-110-129

THIS PRINT DISCLOSES SUBJECT MATTER IN WHICH NYLOPLAST HAS PROPRIETARY RIGHTS. THE RECEIPT OR POSSESSION OF THIS PRINT DOES NOT CONFER, TRANSFER, OR LICENSE THE USE OF THE DESIGN OR TECHNICAL INFORMATION SHOWN HEREIN REPRODUCTION OF THIS PRINT OR ANY INFORMATION CONTAINED HEREIN, OR MANUFACTURE OF ANY ARTICLE HEREFROM, FOR THE DISCLOSURE TO OTHERS IS FORBIDDEN, EXCEPT BY SPECIFIC WRITTEN PERMISSION FROM NYLOPLAST.

©2013 NYLOPLAST

DRAWN BY	EBC	MATERIAL	 3130 VERONA AVE BUFORD, GA 30518 PHN (770) 932-2443 FAX (770) 932-2490 www.nyloplast-us.com
DATE	03-07-06	DUCTILE IRON FRAME BRASS GRATE	
REVISED BY	CCA	PROJECT NO./NAME	TITLE
DATE	08-30-13		15 IN BRONZE GRATE ASSEMBLY
DWG SIZE	A	SCALE 1:8 SHEET 1 OF 1	DWG NO. 7001-110-210 REV D