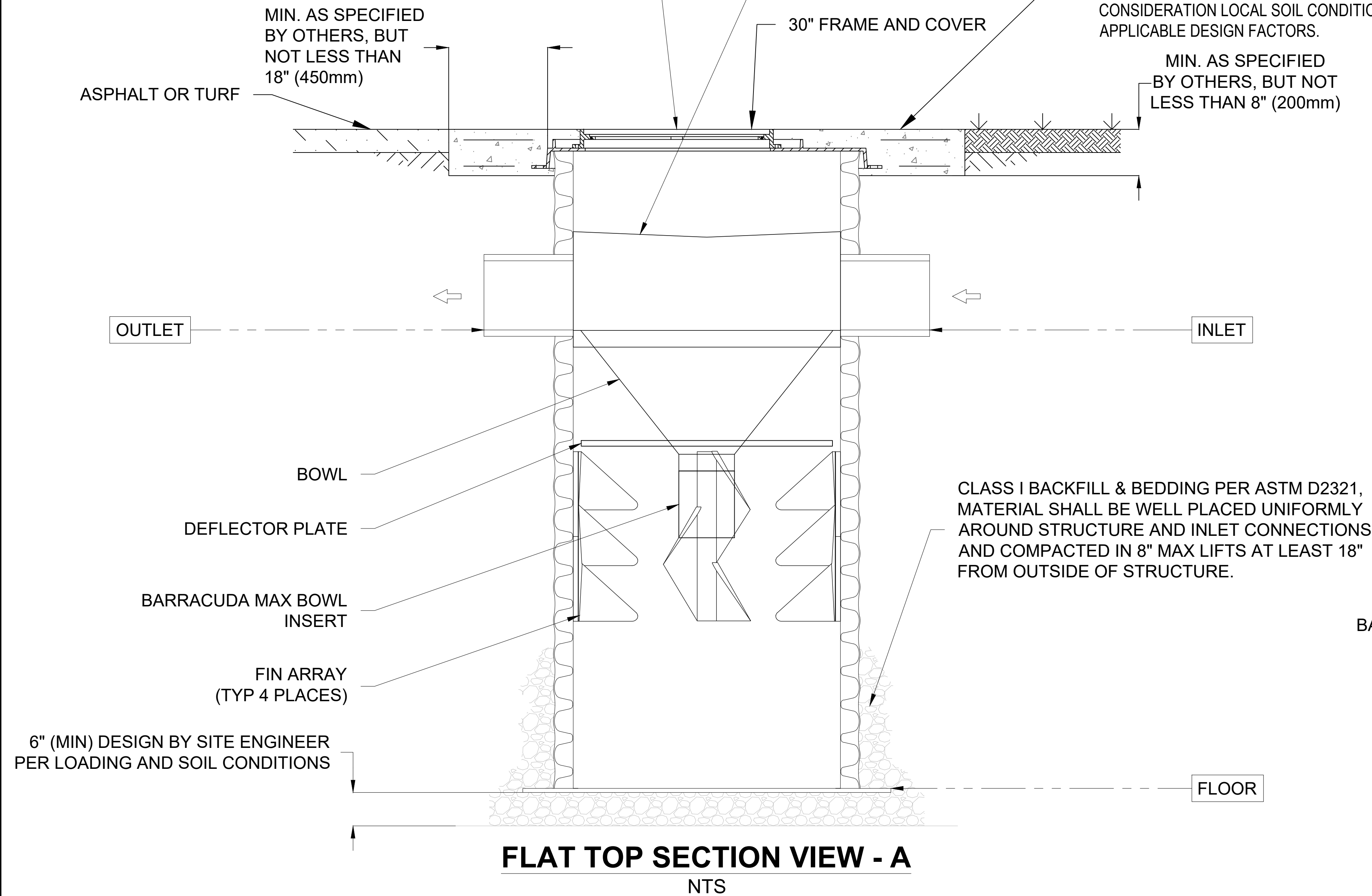


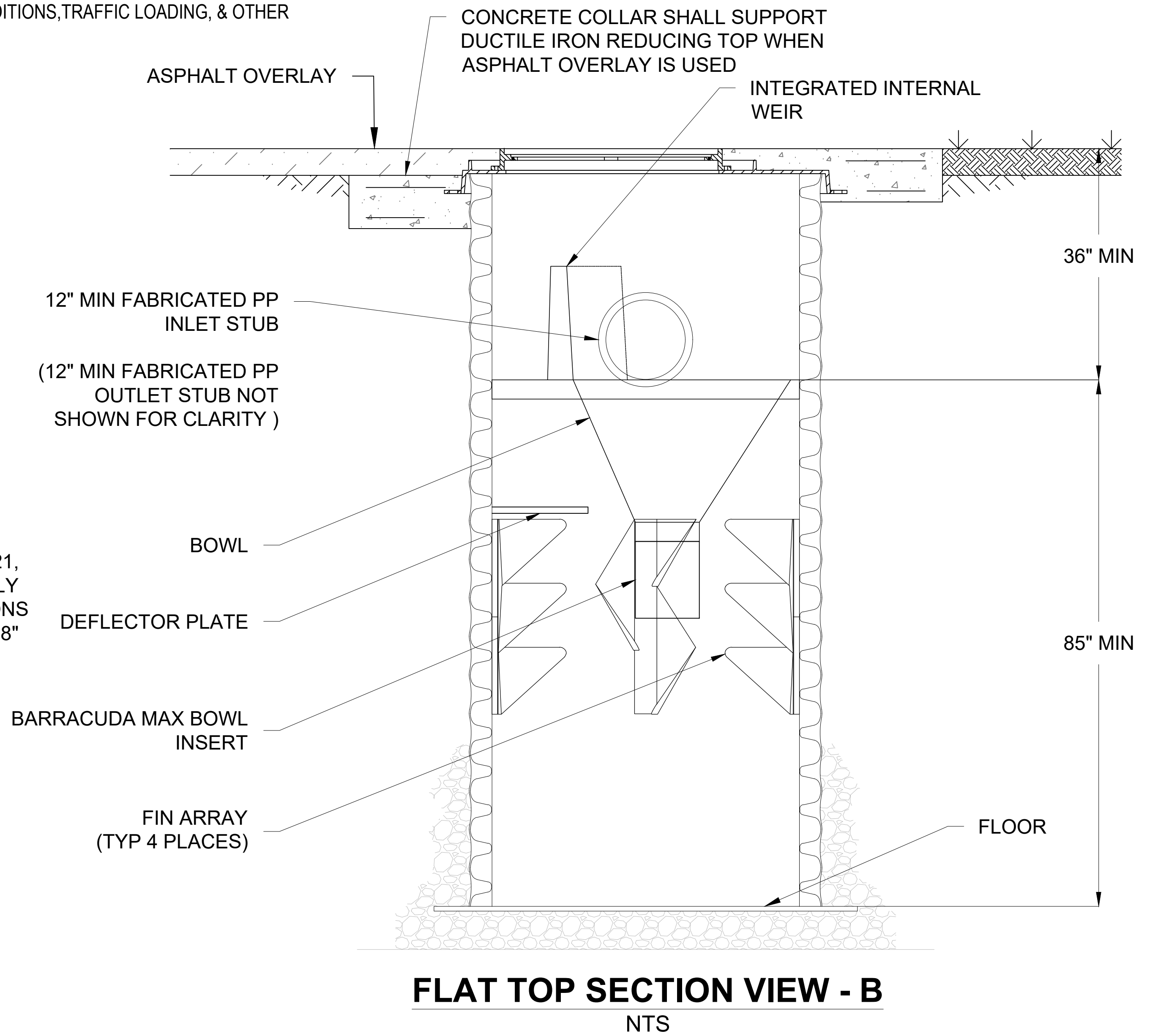
LID & FRAME SUPPLIED BY ADS FOR LOADS NOT TO EXCEED HL-93;  
SEE STD-414 FOR FURTHER DETAILS OF FRAME & COVER.  
ALTERNATE LID & FRAME BY OTHERS AS ALLOWED PER DESIGN  
ENGINEER. FRAME TO BE SUPPORTED BY CONCRETE COLLAR.



CONCRETE SLAB DIMENSIONS ARE FOR GUIDELINE PURPOSES ONLY.  
ACTUAL CONCRETE SLAB MUST BE DESIGNED TAKING INTO  
CONSIDERATION LOCAL SOIL CONDITIONS, TRAFFIC LOADING, & OTHER  
APPLICABLE DESIGN FACTORS.

MIN. AS SPECIFIED  
BY OTHERS, BUT NOT  
LESS THAN 8" (200mm)

CLASS I BACKFILL & BEDDING PER ASTM D2321,  
MATERIAL SHALL BE WELL PLACED UNIFORMLY  
AROUND STRUCTURE AND INLET CONNECTIONS  
AND COMPACTED IN 8" MAX LIFTS AT LEAST 18"  
FROM OUTSIDE OF STRUCTURE.



ADVANCED DRAINAGE SYSTEMS, INC. ("ADS") HAS PREPARED THIS DETAIL BASED ON INFORMATION PROVIDED TO ADS. THIS DRAWING IS INTENDED TO DEPICT THE COMPONENTS AS REQUESTED. ADS HAS NOT PERFORMED ANY ENGINEERING OR DESIGN SERVICES FOR THIS PROJECT, NOR HAS ADS INDEPENDENTLY VERIFIED THE INFORMATION SUPPLIED. THE INSTALLATION DETAILS PROVIDED HEREIN ARE GENERAL RECOMMENDATIONS AND ARE NOT SPECIFIC FOR THIS PROJECT. THE DESIGN ENGINEER SHALL REVIEW THESE DETAILS PRIOR TO CONSTRUCTION. IT IS THE DESIGN ENGINEERS RESPONSIBILITY TO ENSURE THE DETAILS PROVIDED HEREIN MEETS OR EXCEEDS THE APPLICABLE NATIONAL, STATE, OR LOCAL REQUIREMENTS AND TO ENSURE THAT THE DETAILS PROVIDED HEREIN ARE ACCEPTABLE FOR THIS PROJECT.

STANDARD DETAIL  
BARRACUDA MAX  
FLAT TOP INSTALLATION

DRAWING NUMBER STD-520



4640 TRUEMAN BLVD  
HILLIARD, OH 43026

DRAWN BY: NMH  
DATE: 9/13/22  
OK'S BY:  
SCALE: NTS  
SHEET: 1 OF 1