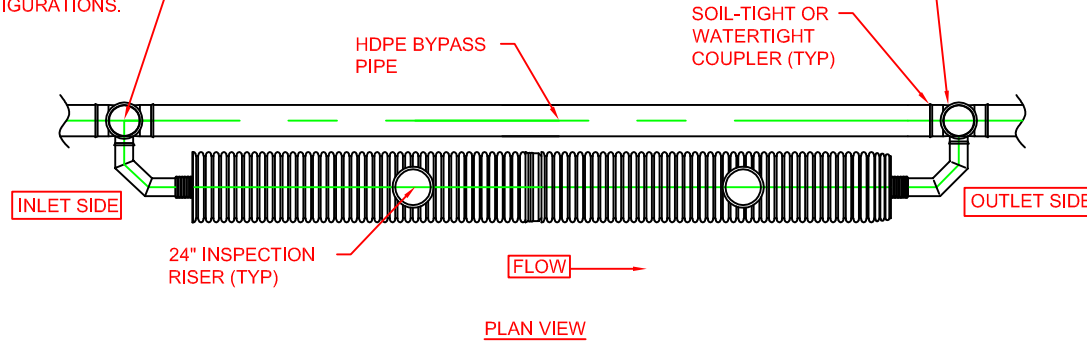
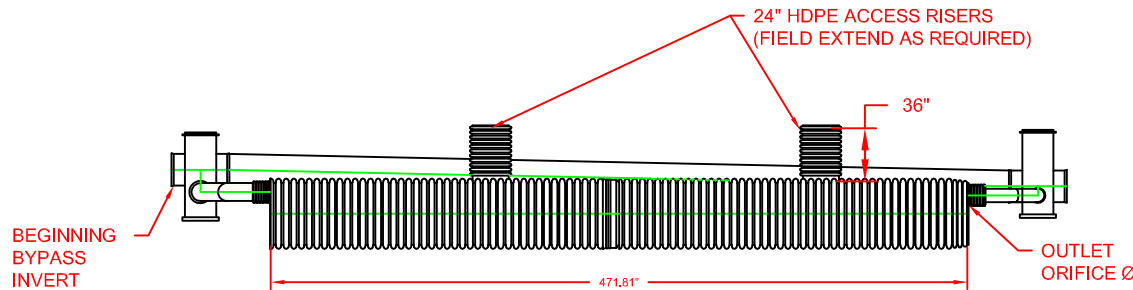


SHOWN AS NYLOPLAST BASIN. SEE STRUCTURE OPTIONS FOR ALTERNATE CONFIGURATIONS.



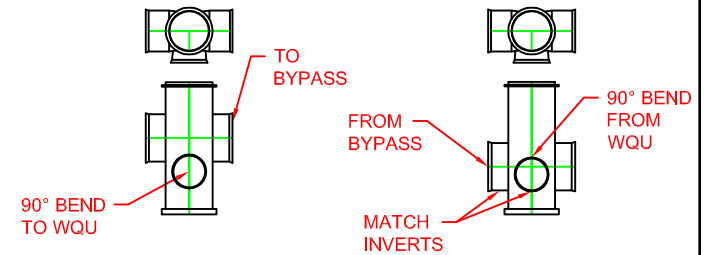
PLAN VIEW



PROFILE VIEW

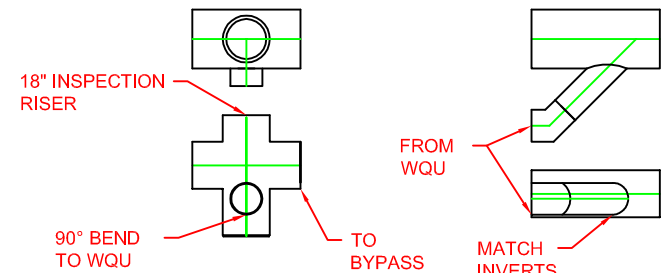
SHOWN AS NYLOPLAST BASIN. SEE STRUCTURE OPTIONS FOR ALTERNATE CONFIGURATIONS.

- STRUCTURE OPTIONS**
- FITTING DIMENSIONS VARY WITH UNIT DESIGN, DIMENSIONS CAN BE PROVIDED ONCE DESIGN IS EVALUATED.
 - COMBINATIONS OF NYLOPLAST BASINS AND FABRICATED FITTINGS ARE AVAILABLE
 - STRUCTURES BY OTHERS MAY BE USED.



INLET STRUCTURE NYLOPLAST BASIN

OUTLET STRUCTURE NYLOPLAST BASIN



INLET STRUCTURE FABRICATED SUMP TEE

OUTLET STRUCTURE FABRICATED REDUCING WYE

MODEL #	MAIN PIPE DIA.	SIEVE SIZE	PARTICLE SIZE (CM)	TREATED FLOW RATE (CFS)	INLET Ø	OUTLET Ø	OUTLET ORIFICE Ø	ELEVATION CHANGE*
4240WQAXX	42"	140	0.0106	3.66	12"	12"	11.75"	14.8"
4240WQBXX	42"	200	0.0075	1.83	12"	12"	8.31"	14.8"

XX DENOTES A BY-PASS SIZE OF 15", 18", 24", 30", 36", 42", 48", OR 60"
 XX=00 DENOTES UNITS W/OUT A BY-PASS.
 * ELEVATION CHANGE FOR UNITS WITHOUT A BY-PASS IS 2"

NOTES:

1. SEE STANDARD DETAILS STD-501 AND STD-502 FOR STORM WATER QUALITY UNIT PRODUCT DETAILS.
2. REFERENCE TECHNICAL NOTE 1.03 FOR ADDITIONAL DESIGN INFORMATION.
3. ELEVATION CHANGE DENOTES THE ELEVATION DROP FROM INVERT OF BYPASS AT INLET TO INVERT OF BYPASS AT OUTLET.

© 2016 ADS, INC.

ADVANCED DRAINAGE SYSTEMS, INC. ("ADS") HAS PREPARED THIS DETAIL BASED ON INFORMATION PROVIDED TO ADS. THIS DRAWING IS INTENDED TO DEPICT THE COMPONENTS AS REQUESTED. ADS HAS NOT PERFORMED ANY ENGINEERING OR DESIGN SERVICES FOR THIS PROJECT, NOR HAS ADS INDEPENDENTLY VERIFIED THE INFORMATION SUPPLIED. THE INSTALLATION DETAILS PROVIDED HEREIN ARE GENERAL RECOMMENDATIONS AND ARE NOT SPECIFIC FOR THIS PROJECT. THE DESIGN ENGINEER SHALL REVIEW THESE DETAILS PRIOR TO CONSTRUCTION. IT IS THE DESIGN ENGINEERS RESPONSIBILITY TO ENSURE THE DETAILS PROVIDED HEREIN MEETS OR EXCEEDS THE APPLICABLE NATIONAL, STATE, OR LOCAL REQUIREMENTS AND TO ENSURE THAT THE DETAILS PROVIDED HEREIN ARE ACCEPTABLE FOR THIS PROJECT.

1	FORMATTING UPDATES AND RENAMED	TJR	02/16/16	
REV.	DESCRIPTION	BY	MM/DD/YY	CHKD

42in 40ft WQU

DRAWING NUMBER: STD-506



4640 TRUEMAN BLVD
 HILLIARD, OHIO 43026

DRAWN BY	CKS
DATE	7/17/08
CHD BY	
SCALE	NTS
SHEET	OF