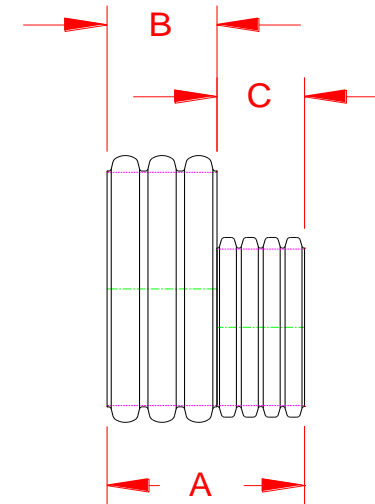


HP STORM DUAL WALL FABRICATED REDUCERS
15" x 12" - 36" x 24" DIAMETER (PLAIN END)

PART #	PIPE SIZE	A	B	C	JOINT
1574ANP	15 x 12 in (375x 300 mm)	17.7 in (449 mm)	7.9 in (200 mm)	9.8 in (249 mm)	ST
1874ANP	18 x 12 in (450 x 300 mm)	17.7 in (450 mm)	7.9 in (201 mm)	9.8 in (249 mm)	ST
1875ANP	18 x 15 in (450 x 375mm)	18.4 in (468 mm)	7.9 in (201 mm)	10.5 in (266 mm)	ST
2474ANP	24 x 12 in (600 x 300 mm)	19.3 in (491 mm)	9.5 in (242 mm)	9.8 in (249 mm)	ST
2475ANP	24 x 15 in (600 x 375 mm)	20.0 in (509 mm)	9.5 in (242 mm)	10.5 in (266 mm)	ST
2476ANP	24 x 18 in (600 x 450 mm)	20.1 in (511 mm)	9.5 in (242 mm)	10.6 in (268 mm)	ST
3074ANP	30 x 12 in (750 x 300 mm)	21.7 in (552 mm)	11.9 in (303 mm)	9.8 in (249 mm)	ST
3075ANP	30 x 15 in (750 x 375 mm)	22.4 in (569 mm)	11.9 in (303 mm)	10.5 in (266 mm)	ST
3076ANP	30 x 18 in (750 x 450 mm)	22.5 in (572 mm)	11.9 in (303 mm)	10.6 in (268 mm)	ST
3077ANP	30 x 24 in (750 x 600 mm)	24.5 in (621 mm)	11.9 in (303 mm)	12.5 in (318 mm)	ST
3674ANP	36 x 12 in (900 x 300 mm)	25.5 in (649 mm)	15.7 in (400 mm)	9.8 in (249 mm)	ST
3675ANP	36 x 15 in (900 x 375 mm)	26.2 in (666 mm)	15.7 in (400 mm)	10.5 in (266 mm)	ST
3676ANP	36 x 18 in (900 x 450 mm)	26.3 in (668 mm)	15.7 in (400 mm)	10.6 in (268 mm)	ST
3677ANP	36 x 24 in (900 x 600 mm)	28.3 in (718 mm)	15.7 in (400 mm)	15.5 in (394 mm)	ST



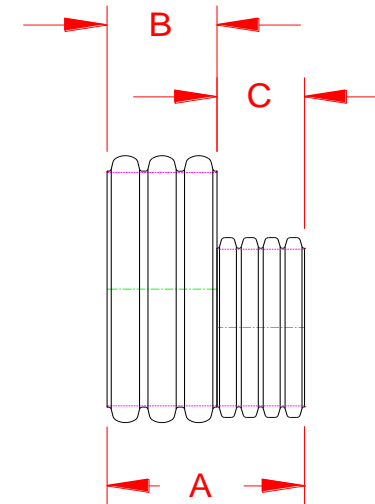
NOTE: ALL FITTINGS DIMENSIONS ARE FOR REFERENCE ONLY

© 2021 Advanced Drainage Systems, Inc.

	DRAWING #:	HP 12000
	DRAWN BY:	TJR 10/19/2009
	APPROVED BY:	
	REVISIONS:	TJR 5/13/2014

HP STORM DUAL WALL FABRICATED REDUCERS 42" x 12" - 60" x 24" DIAMETER (PLAIN END)

PART #	PIPE SIZE	A	B	C	JOINT
4274ANP	42 x 12 in (1050 x 300 mm)	25.2 in (641 mm)	15.4 in (392 mm)	9.8 in (249 mm)	ST
4275ANP	42 x 15 in (1050 x 375 mm)	25.9 in (658 mm)	15.4 in (392 mm)	10.5 in (266 mm)	ST
4276ANP	42 x 18 in (1050 x 450 mm)	26.0 in (660 mm)	15.4 in (392 mm)	10.6 in (268 mm)	ST
4277ANP	42 x 24 in (1050 x 600 mm)	27.9 in (710 mm)	15.4 in (392 mm)	12.5 in (318 mm)	ST
4874ANP	48 x 12 in (1200 x 300 mm)	25.5 in (648 mm)	15.7 in (399 mm)	9.8 in (249 mm)	ST
4875ANP	48 x 15 in (1200 x 375 mm)	26.2 in (665 mm)	15.7 in (399 mm)	10.5 in (266 mm)	ST
4876ANP	48 x 18 in (1200 x 450 mm)	26.3 in (667 mm)	15.7 in (399 mm)	10.6 in (268 mm)	ST
4877ANP	48 x 24 in (1200 x 600 mm)	28.2 in (717 mm)	15.7 in (399 mm)	12.5 in (318 mm)	ST
6074ANP	60 x 12 in (1500 x 300 mm)	27.8 in (706 mm)	18.0 in (457 mm)	9.8 in (249 mm)	ST
6075ANP	60 x 15 in (1500 x 375 mm)	28.5 in (723 mm)	18.0 in (457 mm)	10.5 in (266 mm)	ST
6076ANP	60 x 18 in (1500 x 450 mm)	28.6 in (726 mm)	18.0 in (457 mm)	10.6 in (268 mm)	ST
6077ANP	60 x 24 in (1500 x 600 mm)	30.5 in (775 mm)	18.0 in (457 mm)	12.5 in (318 mm)	ST



NOTE: ALL FITTINGS DIMENSIONS ARE FOR REFERENCE ONLY

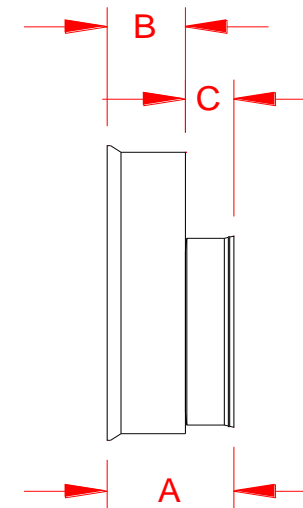
© 2021 Advanced Drainage Systems, Inc.



DRAWING #:	HP 12100	
DRAWN BY:	TJR	10/19/2009
APPROVED BY:		
REVISIONS:	TJR	5/13/2014

HP STORM DUAL WALL FABRICATED REDUCERS
15" x 12" - 24" x 18" DIAMETER (BELL\BELL)

PART #	PIPE SIZE	A	B	C	JOINT
1574AN65BP	15 x 12 in (375x 300 mm)	14.3 in (362 mm)	7.8 in (197 mm)	6.5 in (165 mm)	WT
1874AN65BP	18 x 12 in (450 x 300 mm)	15.4 in (391 mm)	8.9 in (226 mm)	6.5 in (165 mm)	WT
1875AN65BP	18 x 15 in (450 x 375mm)	16.6 in (422 mm)	8.9 in (2131 mm)	7.8 in (197 mm)	WT
2474AN65BP	24 x 12 in (600 x 300 mm)	13.5 in (343 mm)	7.0 in (178 mm)	6.5 in (165 mm)	WT
2475AN65BP	24 x 15 in (600 x 375 mm)	14.8 in (375 mm)	7.0 in (178 mm)	7.8 in (197 mm)	WT
2476AN65BP	24 x 18 in (600 x 450 mm)	15.9 in (403 mm)	7.0 in (178 mm)	8.9 in (226 mm)	WT



WT (INCLUDES 2 GASKETS)

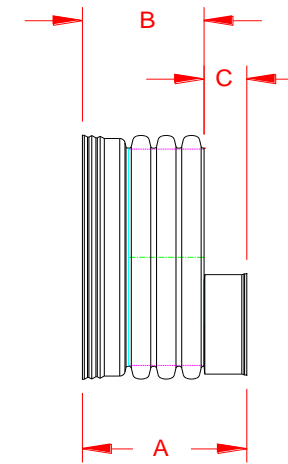
NOTE: ALL FITTINGS DIMENSIONS ARE FOR REFERENCE ONLY

© 2021 Advanced Drainage Systems, Inc.

 Advanced Drainage Systems, Inc.	DRAWING #:	HP 12200
	DRAWN BY:	TJR 10/19/2009
	APPROVED BY:	
	REVISIONS:	TJR 5/13/2014

HP STORM DUAL WALL FABRICATED REDUCERS
30" x 12" - 36" x 24" DIAMETER (IB BELLBELL)

PART #	PIPE SIZE	A	B	C	JOINT
3074AN65BP	30 x 12 in (750 x 300 mm)	25.1 in (638 mm)	18.6 in (472 mm)	6.5 in (165 mm)	WT
3075AN65BP	30 x 15 in (750 x 375 mm)	26.4 in (669 mm)	18.6 in (472 mm)	7.8 in (197 mm)	WT
3076AN65BP	30 x 18 in (750 x 450mm)	27.5 in (698 mm)	18.6 in (472 mm)	8.9 in (226 mm)	WT
3077AN65BP	30 x 24 in (750 x 600 mm)	25.6 in (650 mm)	18.6 in (472 mm)	7.0 in (178 mm)	WT
3674AN65BP	36 x 12 in (900 x 300 mm)	26.0 in (661 mm)	19.5 in (496 mm)	6.5 in (165 mm)	WT
3675AN65BP	36 x 15 in (900 x 375 mm)	27.3 in (693 mm)	19.5 in (496 mm)	7.8 in (197 mm)	WT
3676AN65BP	36 x 18 in (900 x 450 mm)	28.4 in (721 mm)	19.5 in (496 mm)	8.9 in (226 mm)	WT
3677AN65BP	36 x 24 in (900 x 600 mm)	26.5 in (674 mm)	19.5 in (496 mm)	7.0 in (178 mm)	WT



WT (INCLUDES 1 GASKETS)

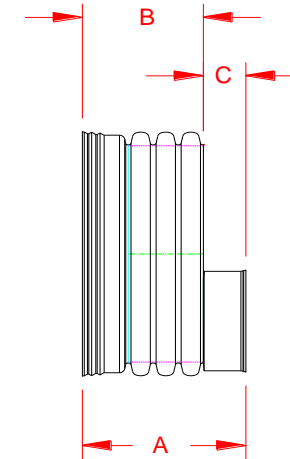
NOTE: ALL FITTINGS DIMENSIONS ARE FOR REFERENCE ONLY

© 2021 Advanced Drainage Systems, Inc.

 Advanced Drainage Systems, Inc.	DRAWING #:	HP 12250	
	DRAWN BY:	TJR	8/6/2010
	APPROVED BY:		
	REVISIONS:	TJR	5/13/2014

HP STORM DUAL WALL FABRICATED REDUCERS
42" x 12" - 60" x 24" DIAMETER (IB BELLBELL)

PART #	PIPE SIZE	A	B	C	JOINT
4274AN65BP	42 x 12 in (1050x 300 mm)	31.0 in (788 mm)	24.5 in (623 mm)	6.5 in (165 mm)	WT
4275AN65BP	42 x 15 in (1050 x 375 mm)	32.3 in (820 mm)	24.5 in (623 mm)	7.8 in (197 mm)	WT
4276AN65BP	42 x 18 in (1050 x 450mm)	33.4 in (849 mm)	24.5 in (623 mm)	8.9 in (226 mm)	WT
4277AN65BP	42 x 24 in (1050 x 600 mm)	31.5 in (801 mm)	24.5 in (623 mm)	7.0 in (178 mm)	WT
4874AN65BP	48 x 12 in (1200 x 300 mm)	31.7 in (806 mm)	25.2 in (641 mm)	6.5 in (165 mm)	WT
4875AN65BP	48 x 15 in (1200 x 375 mm)	33.0 in (838 mm)	25.2 in (641 mm)	7.8 in (197 mm)	WT
4876AN65BP	48 x 18 in (1200 x 450 mm)	34.1 in (867 mm)	25.2 in (641 mm)	8.9 in (226 mm)	WT
4877AN65BP	48 x 24 in (1200 x 600 mm)	32.2 in (819 mm)	25.2 in (641 mm)	7.0 in (178 mm)	WT
6074AN65BP	60 x 12 in (1500 x 300 mm)	36.5 in (928 mm)	30.0 in (763 mm)	6.5 in (165 mm)	WT
6075AN65BP	60 x 15 in (1500 x 375 mm)	37.8 in (960 mm)	30.0 in (763 mm)	7.8 in (197 mm)	WT
6076AN65BP	60 x 18 in (1500 x 450 mm)	38.9 in (988 mm)	30.0 in (763 mm)	8.4 in (213 mm)	WT
6077AN65BP	60 x 24 in (1500 x 600 mm)	37.0 in (941 mm)	30.0 in (763 mm)	7.0 in (178 mm)	WT



WT (INCLUDES 1 GASKETS)

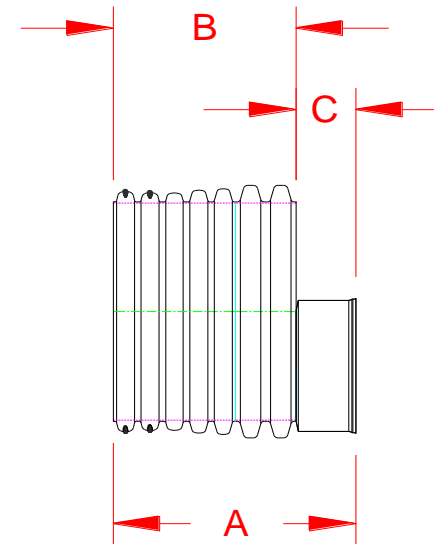
NOTE: ALL FITTINGS DIMENSIONS ARE FOR REFERENCE ONLY

© 2021 Advanced Drainage Systems, Inc.

 Advanced Drainage Systems, Inc.	DRAWING #:	HP 12300	
	DRAWN BY:	TJR	11/17/2009
	APPROVED BY:		
	REVISIONS:	TJR	5/13/2014

HP STORM DUAL WALL FABRICATED REDUCERS
30" x 12" - 36" x 24" DIAMETER (IB SPIGOT\BELL)

PART #	PIPE SIZE	A	B	C	JOINT
3074AN65GP	30 x 12 in (750x 300 mm)	30.2 in (767 mm)	23.7 in (602 mm)	6.5 in (165 mm)	WT
3075AN65GP	30 x 15 in (750 x 375 mm)	31.4 in (799 mm)	23.7 in (602 mm)	7.8 in (197 mm)	WT
3076AN65GP	30 x 18 in (750 x 450mm)	32.6 in (827 mm)	23.7 in (602 mm)	8.9 in (226 mm)	WT
3077AN65GP	30 x 24 in (750 x 600 mm)	30.7 in (780 mm)	23.7 in (602 mm)	7.0 in (178 mm)	WT
3674AN65GP	36 x 12 in (900 x 300 mm)	27.1 in (687 mm)	20.6 in (522 mm)	6.5 in (165 mm)	WT
3675AN65GP	36 x 15 in (900 x 375 mm)	28.3 in (719 mm)	20.6 in (522 mm)	7.8 in (197 mm)	WT
3676AN65GP	36 x 18 in (900 x 450 mm)	29.4 in (748 mm)	20.6 in (522 mm)	8.9 in (226 mm)	WT
3677AN65GP	36 x 24 in (900 x 600 mm)	27.6 in (700 mm)	20.6 in (522 mm)	7.0 in (178 mm)	WT



WT (INCLUDES 2 GASKETS)

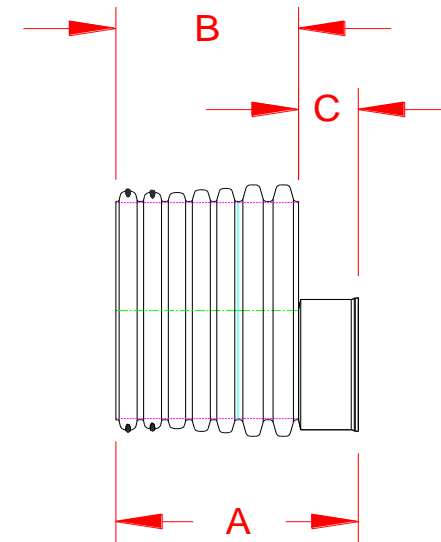
NOTE: ALL FITTINGS DIMENSIONS ARE FOR REFERENCE ONLY

© 2021 Advanced Drainage Systems, Inc.

 Advanced Drainage Systems, Inc.	DRAWING #:	HP 12350	
	DRAWN BY:	TJR	8/6/2010
	APPROVED BY:		
	REVISIONS:	TJR	5/13/2014

HP STORM DUAL WALL FABRICATED REDUCERS
42" x 12" - 60" x 24" DIAMETER (IB SPIGOT\BELL)

PART #	PIPE SIZE	A	B	C	JOINT
4274AN65GP	42 x 12 in (1050 x 300 mm)	31.4 in (799 mm)	24.9 in (633 mm)	6.5 in (165 mm)	WT
4275AN65GP	42 x 15 in (1050 x 375 mm)	32.7 in (830 mm)	24.9 in (633 mm)	7.8 in (197 mm)	WT
4276AN65GP	42 x 18 in (1050 x 450 mm)	33.8 in (859 mm)	24.9 in (633 mm)	8.9 in (226 mm)	WT
4277AN65GP	42 x 24 in (1050 x 600 mm)	31.9 in (811 mm)	24.9 in (633 mm)	7.0 in (178 mm)	WT
4874AN65GP	48 x 12 in (1200 x 300 mm)	32.8 in (834 mm)	26.3 in (669 mm)	6.5 in (165 mm)	WT
4875AN65GP	48 x 15 in (1200 x 375 mm)	34.1 in (866 mm)	26.3 in (669 mm)	7.8 in (197 mm)	WT
4876AN65GP	48 x 18 in (1200 x 450 mm)	35.2 in (894 mm)	26.3 in (669 mm)	8.9 in (226 mm)	WT
4877AN65GP	48 x 24 in (1200 x 600 mm)	33.3 in (847 mm)	26.3 in (669 mm)	7.0 in (178 mm)	WT
6074AN65GP	60 x 12 in (1500 x 300 mm)	38.7 in (982 mm)	32.2 in (817 mm)	6.5 in (165 mm)	WT
6075AN65GP	60 x 15 in (1500 x 375 mm)	39.9 in (1014 mm)	32.2 in (817 mm)	7.8 in (197 mm)	WT
6076AN65GP	60 x 18 in (1500 x 450 mm)	41.1 in (1043 mm)	32.2 in (817 mm)	8.4 in (213 mm)	WT
6077AN65GP	60 x 24 in (1500 x 600 mm)	39.2 in (995 mm)	32.2 in (817 mm)	7.0 in (178 mm)	WT



WT (INCLUDES 2 GASKETS)

NOTE: ALL FITTINGS DIMENSIONS ARE FOR REFERENCE ONLY

© 2021 Advanced Drainage Systems, Inc.

 Advanced Drainage Systems, Inc.	DRAWING #:	HP 12400
	DRAWN BY:	TJR 11/17/2009
	APPROVED BY:	
	REVISIONS:	TJR 5/13/2014