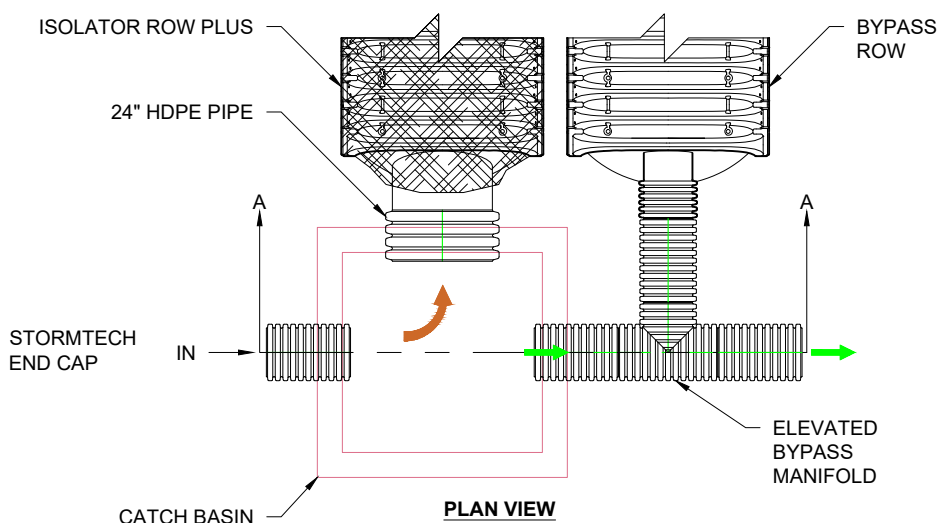
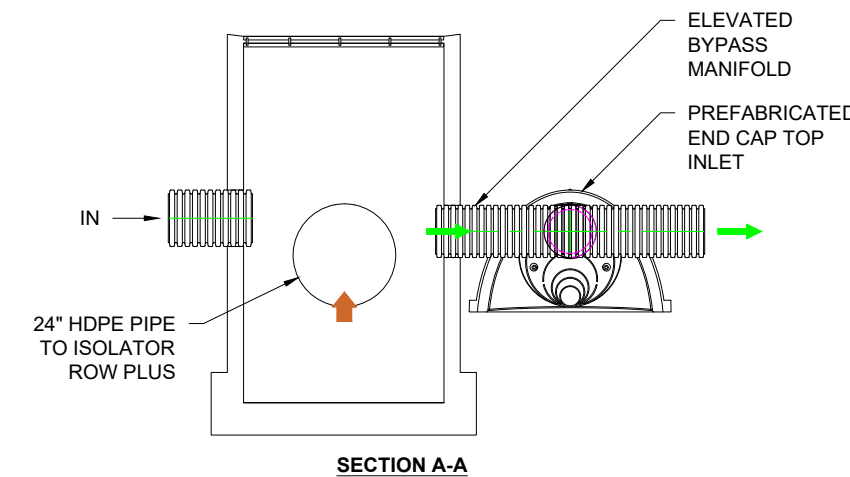


STORMTECH ISOLATOR ROW PLUS CROSS SECTION
NTS



STORMTECH ISOLATOR ROW PLUS BYPASS DETAILS
NTS



SECTION A-A
NTS

KEY BENEFITS OF STORMTECH

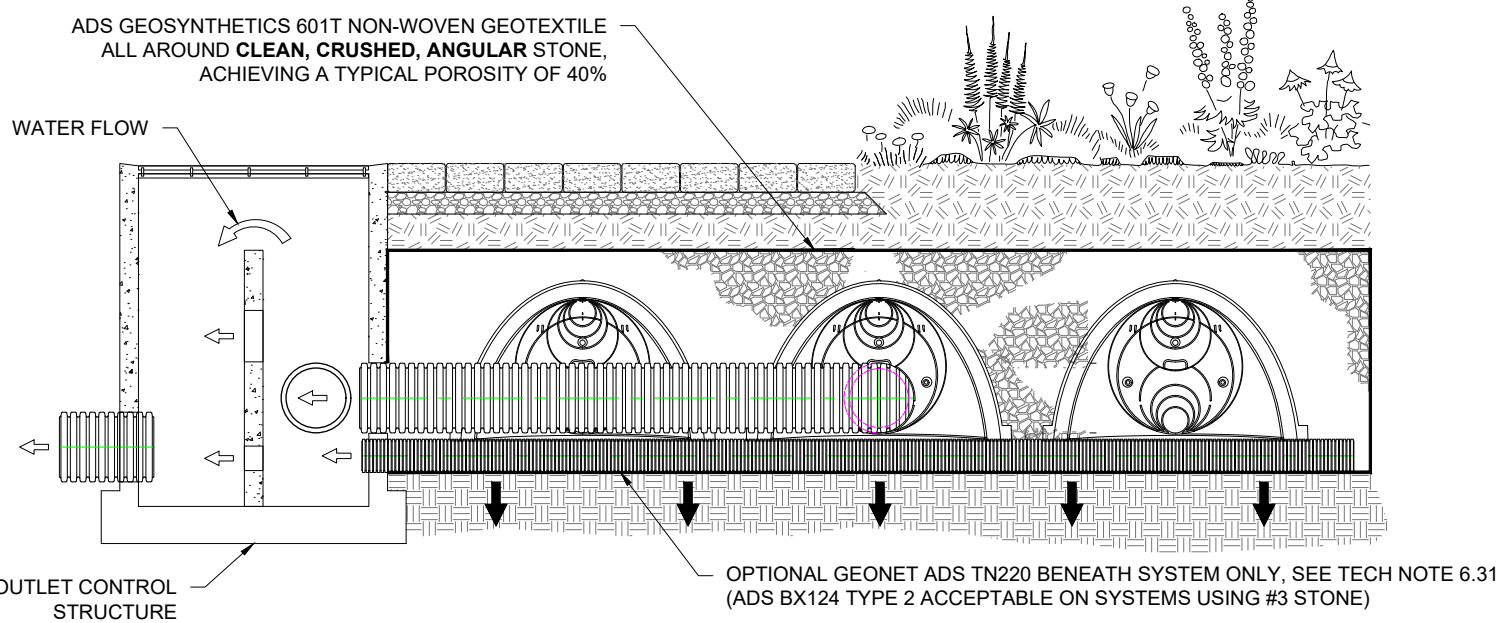
- VOLUME REDUCTION OF STORMWATER THROUGH INFILTRATION
- SIGNIFICANT PEAK FLOW ATTENUATION THROUGH EXTENDED DETENTION
- STORMWATER QUALITY THROUGH PATENTED ISOLATOR ROW
- THIRD PARTY VERIFIED PERFORMANCE
- EASILY CONSTRUCTED, INSPECTED AND MAINTAINED
- CERTIFIED ASTM & AASHTO PRODUCT STANDARDS & SPECIFICATIONS
- DISCHARGE TO DOWNSTREAM CONVEYANCE & SOME INFILTRATION

WATER QUALITY BENEFITS OF STORMTECH

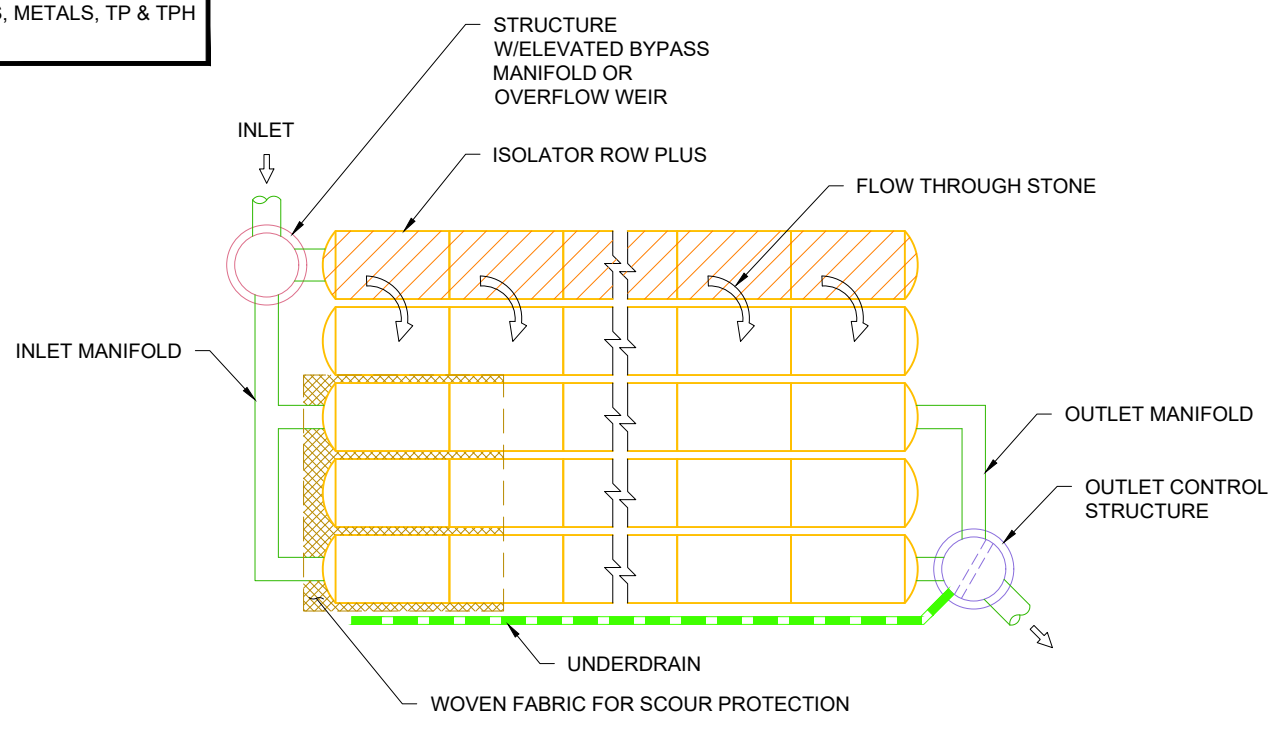
80% TSS REMOVAL AT OR BELOW GIVEN CFS PER CHAMBER:

- SC-160: 0.105
- SC-310: 0.165
- SC-740 / DC-780: 0.256
- MC-3500: 0.395
- MC-4500: 0.277

VOLUME REDUCTION OF STORMWATER THROUGH INFILTRATION
ISOLATOR ROW PLUS REMOVES TSS, TRASH & DEBRIS, METALS, TP & TPH
REDUCTION OF THERMAL IMPACTS



STORMTECH INFILTRATION DETAIL
NTS



STORMTECH ISOLATOR ROW PLUS SCHEMATIC
NTS

GREEN INFRASTRUCTURE DETAIL

DATE:	08/20/2020	DRAWN:	AGC
PROJECT #:		CHECKED:	GFI

DATE	DRWN	CHKD	DESCRIPTION

StormTech
520 CROMWELL AVENUE | ROCKY HILL | CT | 06067
860-525-8188 | 1888-892-2694 | WWW.STORMTECH.COM

4640 TRUEMAN BLVD
HILLIARD, OH 43026

ADS
Advanced Drainage Systems, Inc.