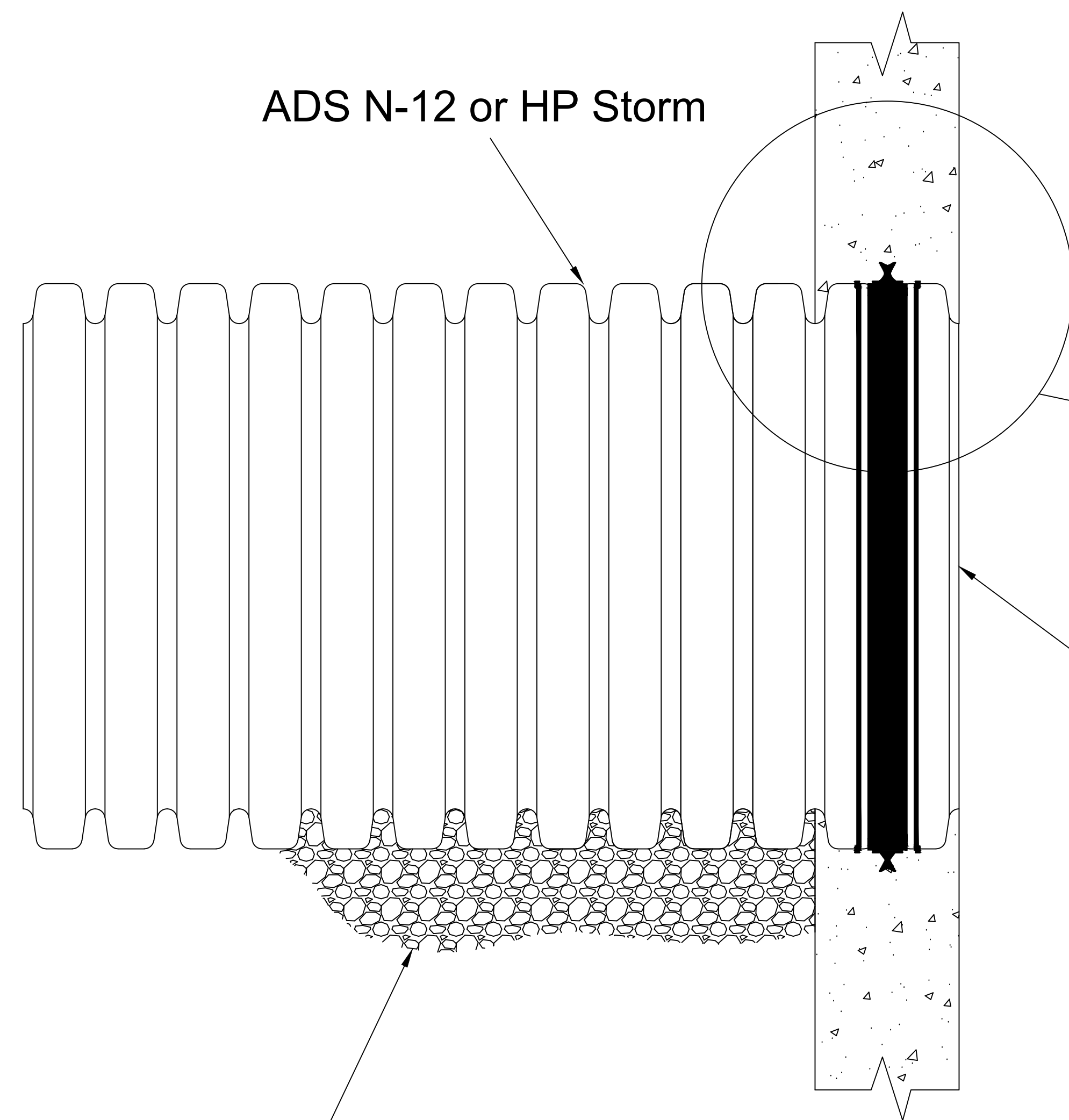


CONCRETE HEADWALL ENCASED CONNECTION DETAIL

INSTALLATION VIEW



ADS N-12 or HP Storm

Stainless steel take-up clamp

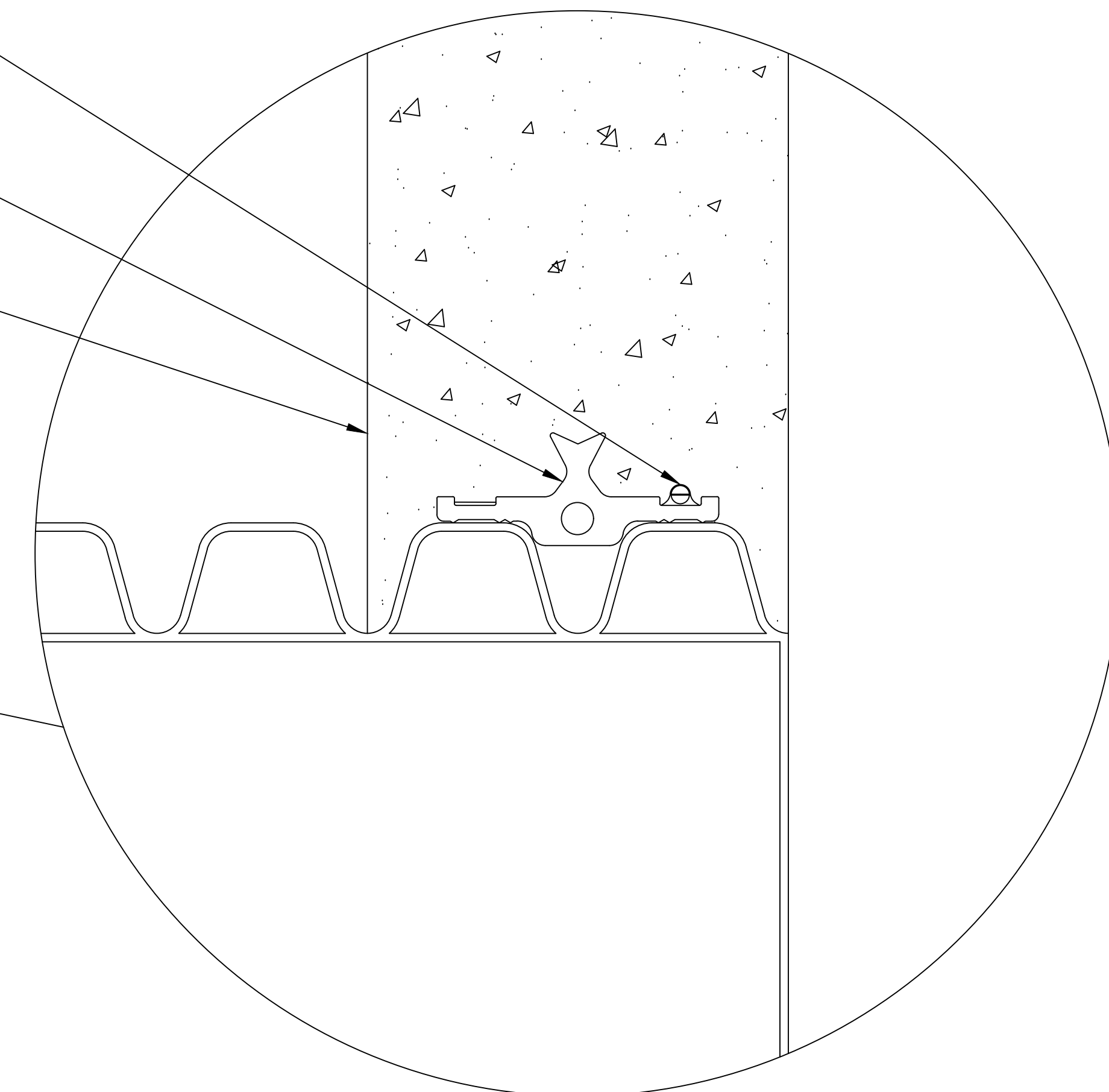
Optional embedded WaterStop gasket

Concrete headwall

Pipe to terminate with plain end as shown

Ensure backfill is placed under pipe and properly compacted

DETAILED CONNECTION VIEW



Notes:

1. WaterStop gasket shown, but optional based on connection performance. Reference Installation Guide 1.05 for WaterStop gasket installation guidance. Performance highly dependent on proper installation. Contractor to ensure gasket is uniformly seated.
2. Pipe at and around encasement to be installed per ASTM 2321.
3. Care should be taken to knife backfill material under and around haunch area of pipe.
4. The need for erosion control directly downstream of the headwall should be considered.

ADVANCED DRAINAGE SYSTEMS, INC. ("ADS") HAS PREPARED THIS DETAIL BASED ON INFORMATION PROVIDED TO ADS. THIS DRAWING IS INTENDED TO DEPICT THE COMPONENTS AS REQUESTED. ADS HAS NOT PERFORMED ANY ENGINEERING OR DESIGN SERVICES FOR THIS PROJECT, NOR HAS ADS INDEPENDENTLY VERIFIED THE INFORMATION SUPPLIED. THE INSTALLATION DETAILS PROVIDED HEREIN ARE GENERAL RECOMMENDATIONS AND ARE NOT SPECIFIC FOR THIS PROJECT. THE DESIGN ENGINEER SHALL REVIEW THESE DETAILS PRIOR TO CONSTRUCTION. IT IS THE DESIGN ENGINEERS RESPONSIBILITY TO ENSURE THE DETAILS PROVIDED HEREIN MEETS OR EXCEEDS THE APPLICABLE NATIONAL, STATE, OR LOCAL REQUIREMENTS AND TO ENSURE THAT THE DETAILS PROVIDED HEREIN ARE ACCEPTABLE FOR THIS PROJECT.

CONCRETE HEADWALL ENCASED
CONNECTION DETAIL

DRAWING NUMBER STD-114



4640 TRUEMAN BLVD
HILLIARD, OH 43026

DRAWN BY:	HAK
DATE:	02/19/24
OK'S BY:	ENG
SCALE:	NTS
SHEET:	1