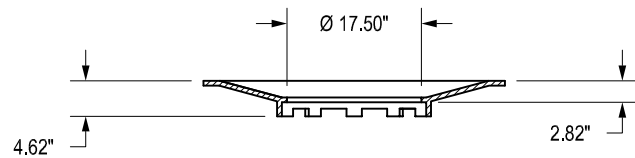
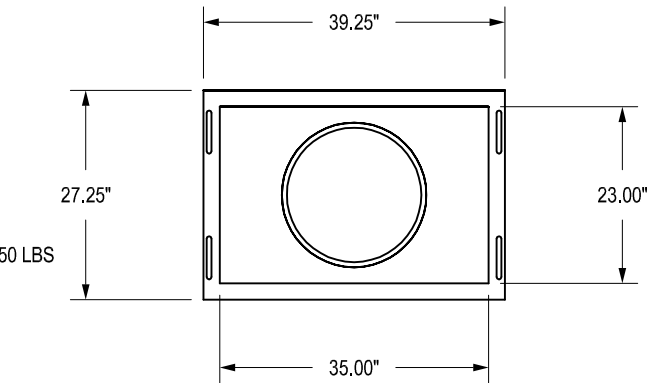


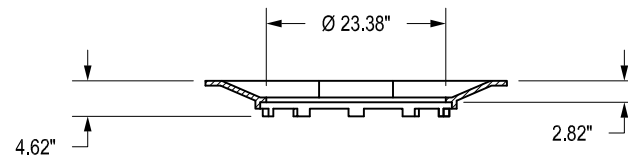
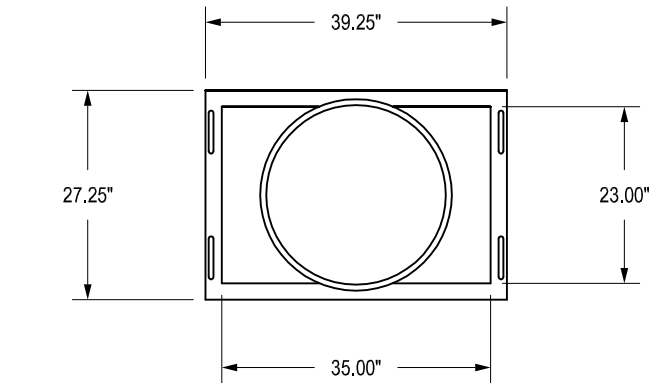
18BASER

2' X 3' CURB INLET
18" BASE PLATE
APPROX. WEIGHT = 133.50 LBS



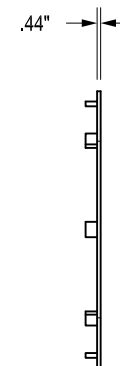
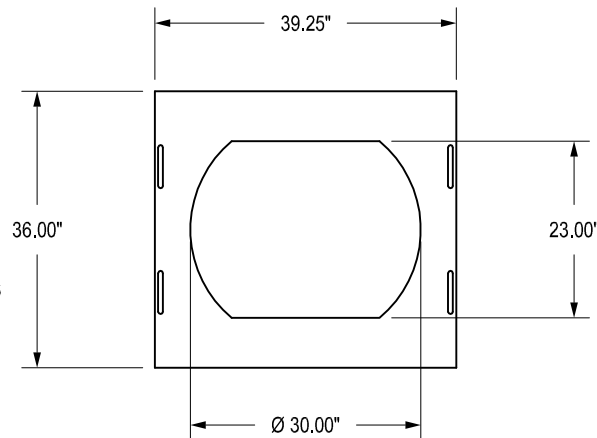
24BASER

2' X 3' CURB INLET
24" BASE PLATE
APPROX. WEIGHT = 122.00 LBS



30BASER

2' X 3' CURB INLET
30" BASE PLATE
APPROX. WEIGHT = 92.50 LBS




DIMENSIONS ARE FOR REFERENCE ONLY
ACTUAL DIMENSIONS MAY VARY
DIMENSIONS ARE IN INCHES
QUALITY: MATERIALS SHALL CONFORM TO ASTM A536
GRADE 70-50-05
PAINT: CASTINGS ARE FURNISHED WITH A BLACK PAINT

THIS PRINT DISCLOSES SUBJECT MATTER IN WHICH NYLOPLAST HAS PROPRIETARY RIGHTS. THE RECEIPT OR POSSESSION OF THIS PRINT DOES NOT CONFER, TRANSFER, OR LICENSE THE USE OF THE DESIGN OR TECHNICAL INFORMATION SHOWN HEREIN REPRODUCTION OF THIS PRINT OR ANY INFORMATION CONTAINED HEREIN, OR MANUFACTURE OF ANY ARTICLE HEREFROM, FOR THE DISCLOSURE TO OTHERS IS FORBIDDEN, EXCEPT BY SPECIFIC WRITTEN PERMISSION FROM NYLOPLAST.

©2013 NYLOPLAST

DRAWN BY	EBC	MATERIAL
DATE	02-06-06	DUCTILE IRON
REVISED BY	CCA	PROJECT NO./NAME
DATE	09-03-13	
DWG SIZE	A	SCALE 1:25 SHEET 1 OF 1

	3130 VERONA AVE BUFORD, GA 30518 PHN (770) 932-2443 FAX (770) 932-2490 www.nyloplast-us.com
	TITLE 2 FT X 3 FT RECTANGLE CURB INLET BASE PLATE GENERAL DIMENSIONS
DWG NO.	7002-110-040 REV C