

Highway Singlewall Pipe

Highway singlewall pipe delivers superior value while providing physical strength and structural design that cannot be matched by metal or concrete. Highway pipe is lightweight, which allows for easier handling for faster, less costly installations.

Applications

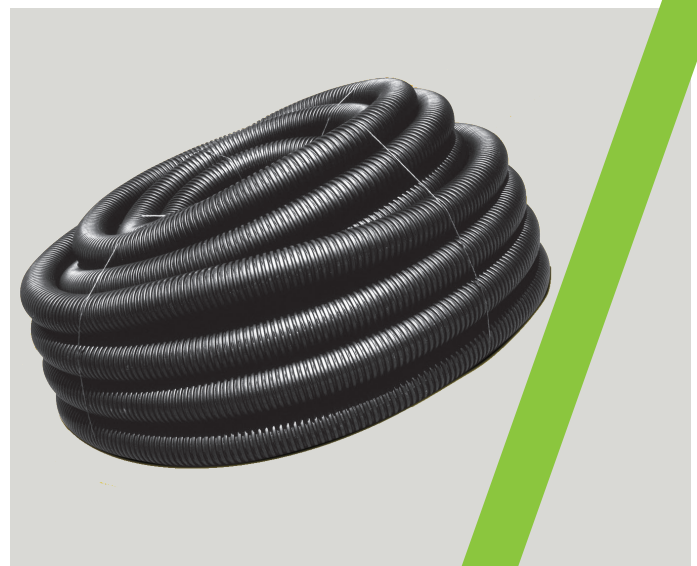
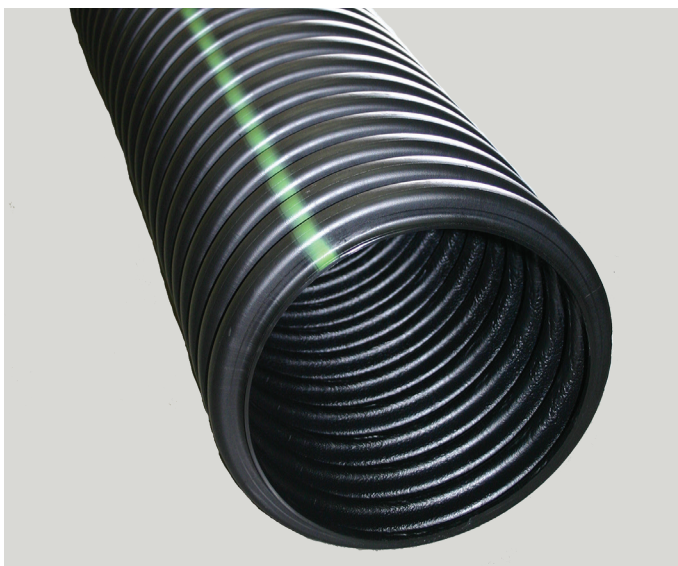
- Culverts
- Cross/Slope/Edge drains
- Sports playing fields
- Golf course drainage
- Parking lot drainage
- Industrial
- Mining
- Forestry
- Waterways
- Terracing

Features

- Available in 100' - 3,200' (30-960 m) coil lengths for 3"-6" (75-150 mm) diameter pipe
- 8"-15" (200-375 mm) diameter pipe is available in 20' (6 m) lengths
- HS-25 (highway traffic loads) rated with a minimum of 12" (300 mm) of cover
- Meets soil-tight joint performance requirements - gasketed or non-gasketed split coupler and internal and external snap couplers are available

Benefits

- Longer lengths, which vary by diameter, result in fewer joints - pipe can be cut easily to the desired length in the field
- Easy-to-handle pipe requires less labor and equipment for fast installation and reduced costs
- Provides superior resistance to chemicals, road salts, motor oil and gasoline
- Withstands repeated freeze/thaw cycles and continuous sub-zero temperatures- will not deteriorate or crumble



ADS Single Wall Highway Pipe Specification

Scope

This specification describes 3-through 15-inch (75 to 375 mm) single wall high density corrugated polyethylene highway pipe for use in gravity-flow land drainage applications.

Pipe Requirements

ADS single wall high density corrugated polyethylene highway pipe shall have annular interior and exterior corrugations.

- 3-through 10-inch (75 to 250 mm) pipe shall meet AASHTO M252, Type C or CP
- 12-through 15-inch (300 to 375 mm) pipe shall meet AASHTO M294, Type C or CP

Joint Performance

Joints for 3- to 15-inch (75-375 mm) shall be made with split or snap couplings. Standard connection shall meet the soil-tightness requirements of AASHTO M252 or M294. Gasketed connections shall incorporate a closed-cell synthetic expanded rubber gasket meeting the requirements of ASTM D1056 Grade 2A2. Gaskets, when applicable, shall be installed by the pipe manufacturer.

Fittings

Fittings shall conform to AASHTO M252 or AASHTO M294.

Material Properties

Pipe and fittings shall be made of polyethylene compounds that comply with the cell classification 424420C for 4- through 10-inch (100 to 250 mm) diameters, or 435400C for 12- through 24-inch (300 to 600 mm) diameters, as defined and described in ASTM D3350, except that carbon black content should not exceed 4%. The 12- through 15-inch (300 to 375 mm) pipe material shall comply with the notched constant ligament-stress (NCLS) test as specified in Sections 9.5 of AASHTO M294.

Installation

Installation shall be in accordance with ASTM D2321 and ADS' recommended installation guidelines, with the exception that minimum cover in trafficked areas for 3- through 15-inch (75 to 375 mm) diameters shall be one foot (0.3 m). Maximum fill heights depend on embedment material and compaction level; please refer to Technical Note 2.03. Contact your local ADS representative or visit our website adspipe.com for a copy of the latest installation guidelines.

Build America, Buy America (BABA)

ADS Single Wall Highway pipe, manufactured in accordance with AASHTO M252 or AASHTO M294, complies with the requirements in the Build America, Buy America (BABA) Act.

Pipe Dimensions

Nominal Diameter								
Pipe I.D. in (mm)	3 (75)	4 (100)	5 (125)	6 (150)	8 (200)	10 (250)	12 (300)	15 (375)
Pipe O.D. in (mm) *	3.6 (91)	4.6 (117)	5.8 (147)	7.0 (178)	9.5 (241)	12.0 (305)	14.5 (368)	18.0 (457)

*Pipe O.D. values are provided for reference purposes only, values stated for 12- through 15-inch are ± 1 inch. Contact a sales representative for exact values. All diameters available with or without perforations.

