

# ARCADIA AR4HP

NJDEP (50% REMOVAL)

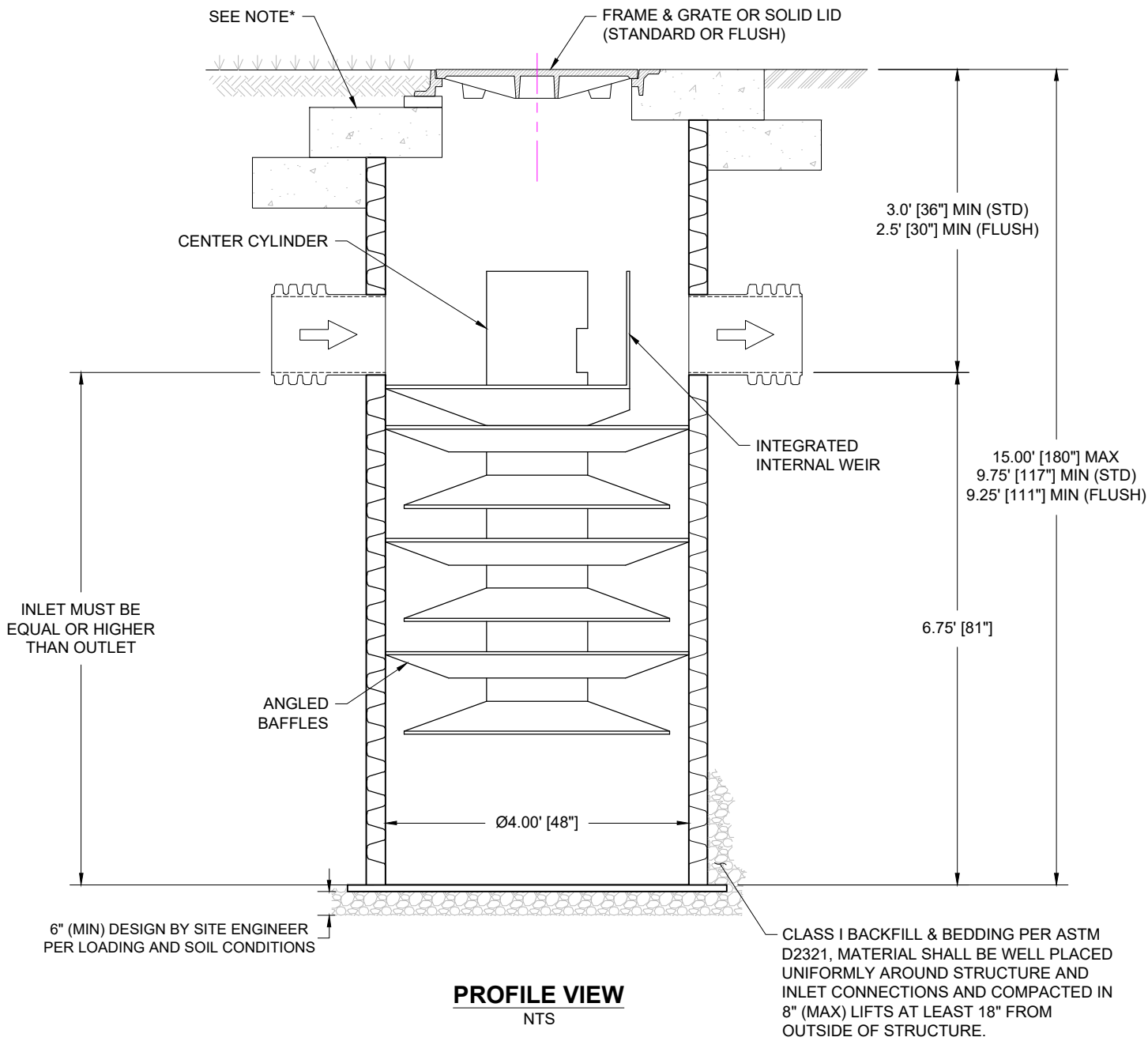
1.68 CFS

PLEASE NOTE: 4"-10" CONNECTIONS REQUIRE THE USE OF INSERTA-TEE FITTINGS AND ARE TO BE ORDERED SEPARATELY FROM THE WATER QUALITY HP MANHOLE. INSERTA-TEE FITTINGS ORDERED ARE DEPENDENT ON CONNECTION DIAMETER AND MATERIAL TYPE.

## ATTENTION:

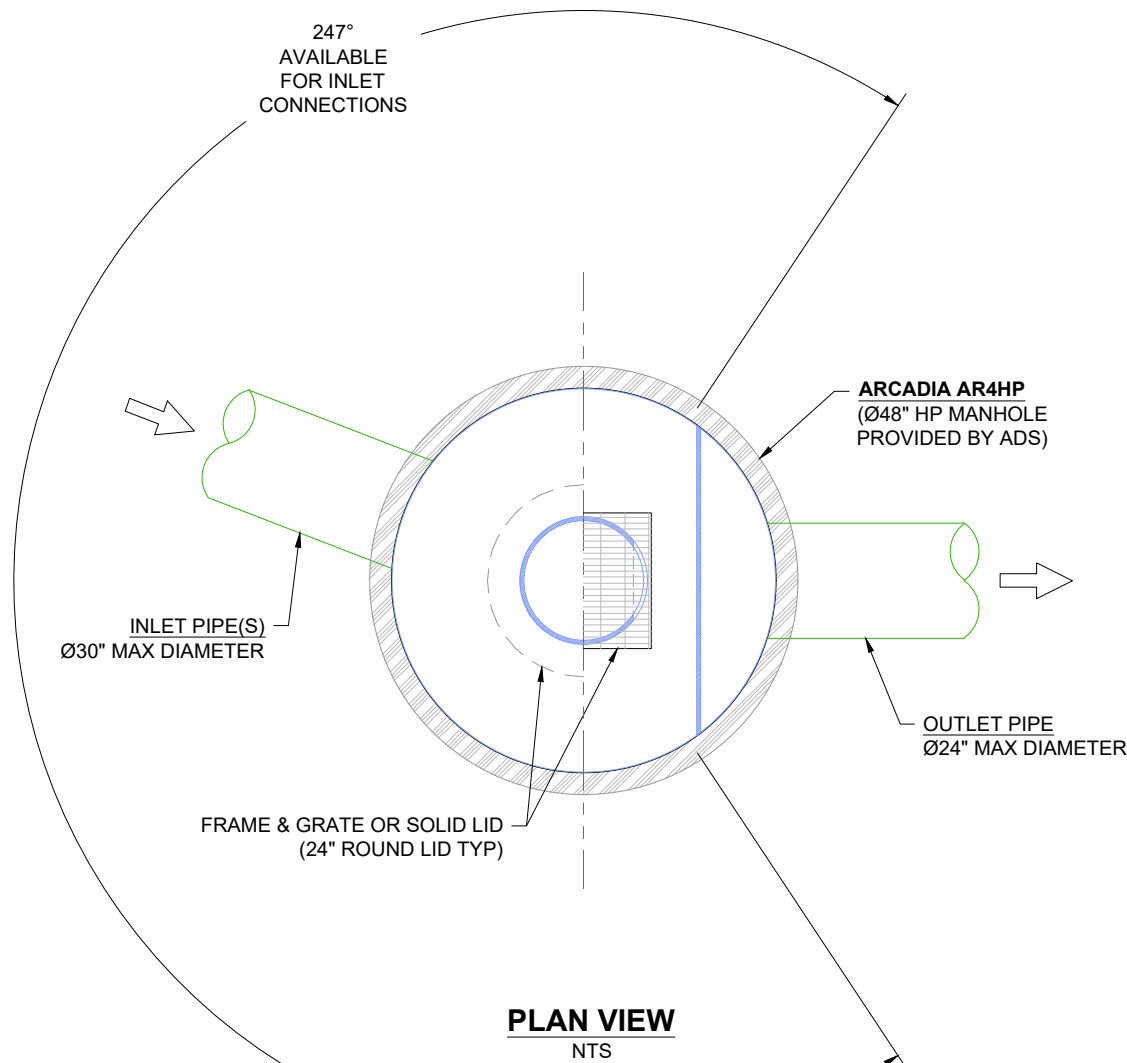
THIS TREATMENT UNIT WAS DESIGNED WITHOUT SITE-SPECIFIC INFORMATION ON GROUNDWATER LEVELS. THE SITE DESIGN ENGINEER IS RESPONSIBLE FOR DETERMINING THE GROUNDWATER LEVEL RELATIVE TO THE BURIED DEPTH OF THE UNIT. IF THE GROUNDWATER DEPTH ABOVE THE BOTTOM OF THE SUMP EXCEEDS ONE-THIRD THE DEPTH OF THE UNIT, CONTACT ADS FOR SOLUTIONS. SEE TECHNICAL NOTE 5.22 FOR GUIDANCE.

\* CONCRETE SLAB DIMENSIONS ARE FOR GUIDELINE PURPOSES ONLY. ACTUAL CONCRETE SLAB MUST BE DESIGNED TAKING INTO CONSIDERATION LOCAL SOIL CONDITIONS, TRAFFIC LOADING, & OTHER APPLICABLE DESIGN FACTORS.




## PRODUCT SPECIFICATIONS

- THE STORMWATER TREATMENT UNIT SHALL BE AN INLINE UNIT CAPABLE OF CONVEYING 100% OF THE DESIGN PEAK FLOW. IF PEAK FLOW RATES EXCEED MAXIMUM HYDRAULIC RATE, THE UNIT SHALL BE INSTALLED OFFLINE.
- THE ARCADIA UNIT SHALL BE DESIGNED TO REMOVE AT LEAST 50% OF TSS USING A MEDIA MIX WITH D50=75 MICRON AND 200 MG/L INFLUENT CONCENTRATION PER CURRENT NJDEP/NJCAT HDS PROTOCOL.

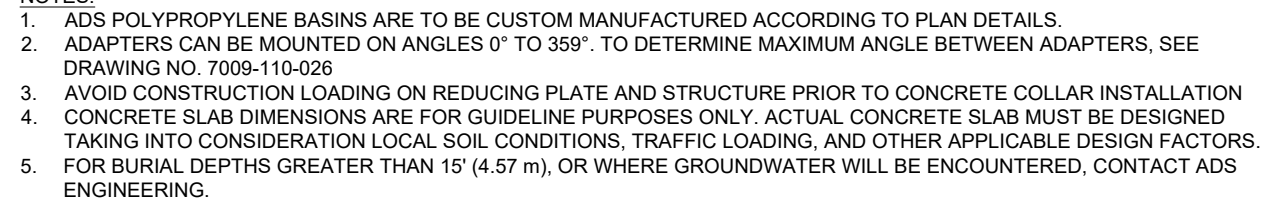


## NOTES:

- ENGINEER / CONTRACTOR TO CONFIRM PIPE MATERIALS AND APPLICABLE ADAPTERS.
- CONTRACTOR IS RESPONSIBLE FOR MATERIAL AND LABOR TO BRING CASTINGS TO FINISHED GRADE.
- CONTRACTOR TO MEASURE HEIGHT OF STRUCTURE TO ENSURE THAT DEPTH OF EXCAVATION IS CORRECT.
- UNIT SHALL CONFORM TO HS20-44 LOAD RATINGS.

<div><div>4640 TRUEMAN BLVD HILLIARD, OH 43026</div></div>		<div><b>ARCADIA</b> Stormwater Separator</div>				<div>ARCADIA AR4HP HP MANHOLE CONCRETE SLAB TOP</div>					
						DATE:		04/23/25		DRAWN: JLM	
						DRAWING #:		530-430		CHECKED: CJD/AT	
						DATE		DRWN		CHKD	
										DESCRIPTION	

## NTS



2 SHEET OF 2

ARCADIA AR4HP  
HP MANHOLE  
CONCRETE TOP SLAB

DRAWN: JLM

DATE: 04/23/25

DATE	DRWN	CHKD	DESCRIPTION
------	------	------	-------------

CHKD

**DRWN**

DATE \_\_\_\_\_

THIS DRAWING HAS BEEN PREPARED BASED ON INFORMATION PROVIDED TO AND/OR STORED UNDER THE DIRECTION OF THE PROJECT'S ENGINEER OF RECORD, (EOR) OR OTHER PROJECT REPRESENTATIVE. THIS DRAWING IS NOT INTENDED FOR USE IN BIDDING OR CONSTRUCTION WITHOUT THE EOR'S PRIOR APPROVAL. EOR SHALL REVIEW THIS DRAWING PRIOR TO BIDDING AND/OR CONSTRUCTION IT IS THE ULTIMATE RESPONSIBILITY OF THE EOR TO ENSURE THAT THE PRODUCT(S) DEFICED AND ALL ASSOCIATED DETAILS MEET ALL APPLICABLE LAWS, REGULATIONS, AND PROJECT REQUIREMENTS.