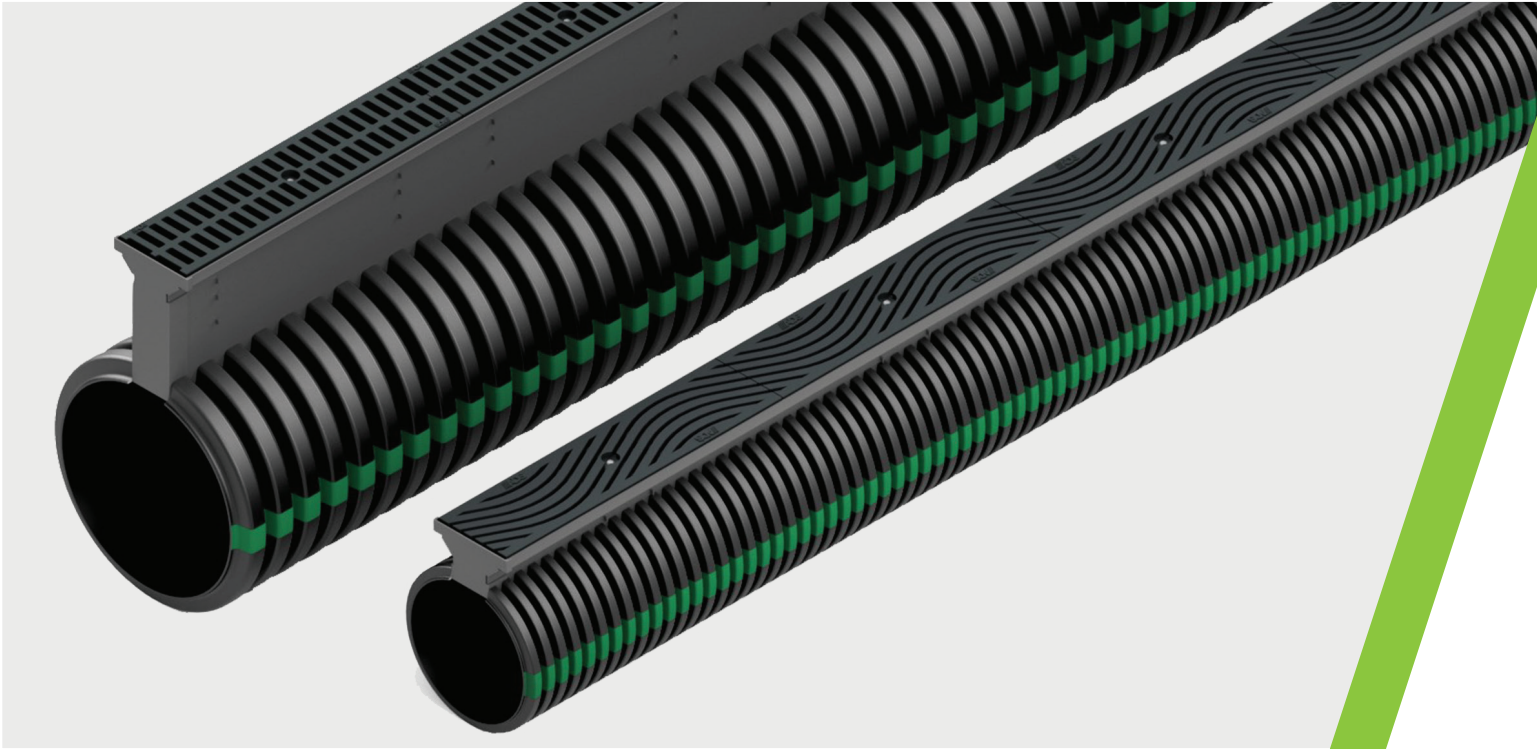


Duraslot® XL

Submittal Package



Package Contents

1. Product overview
 - a. ADS standard specification
2. Duraslot XL standard drawings
 - a. Standard slot height
 - b. Custom slot height
 - c. Standard grate
 - d. Pedestrian grate
 - e. Duraslot XL assembly



adspipe.com
800-821-6710

ADS DURASLOT XL SPECIFICATION

Scope

This specification describes 6- through 36-inch (150 to 900 mm) ADS Duraslot XL pipe for use in surface drain and conveyance applications.

Pipe Requirements

Duraslot XL pipe, as manufactured and distributed by ADS, Inc., shall have a smooth interior and annular exterior corrugations with an aluminum slot grate frame mounted longitudinally along the length of the pipe to accept the grate, while maintaining the original pipe diameter.

- 6- through 10-inch (150 to 250 mm) pipe shall meet AASHTO M252, Type S.
- 12- through 36-inch (300 to 900 mm) pipe shall meet AASHTO M294, Type S or ASTM F2306.
- Manning's "n" value for use in design shall be 0.012.

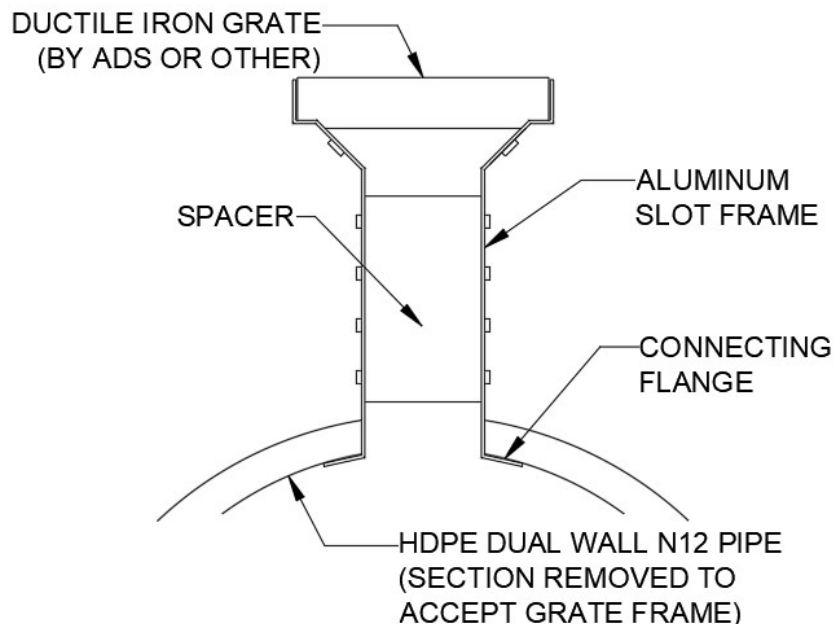
The aluminum slot grate frame shall be manufactured from 0.063" (1.6 mm) tempered commercial aluminum meeting the requirements of ASTM B209, consisting of two parallel plates separated by spacers spanning the slot width. The aluminum slot grate frame shall be coated with a primer to protect the aluminum when installed in concrete. Grates furnished by ADS shall be made of ductile iron with a 4.81-inch (122 mm) width and 19.69-inch (500 mm) length. The grate pattern, open area and load rating will vary based on the chosen design. The flange at the bottom of the aluminum slot grate frame shall be riveted to the pipe with a minimum of two rivets per linear foot.

Fittings

Duraslot XL fittings shall be modified from fittings which conform to AASHTO M252, AASHTO M294 or ASTM F2306.

Installation

Installation shall be in accordance with ADS recommended installation instructions. Contact your local ADS representative or visit www.adspipe.com for a copy of the latest installation guidelines.

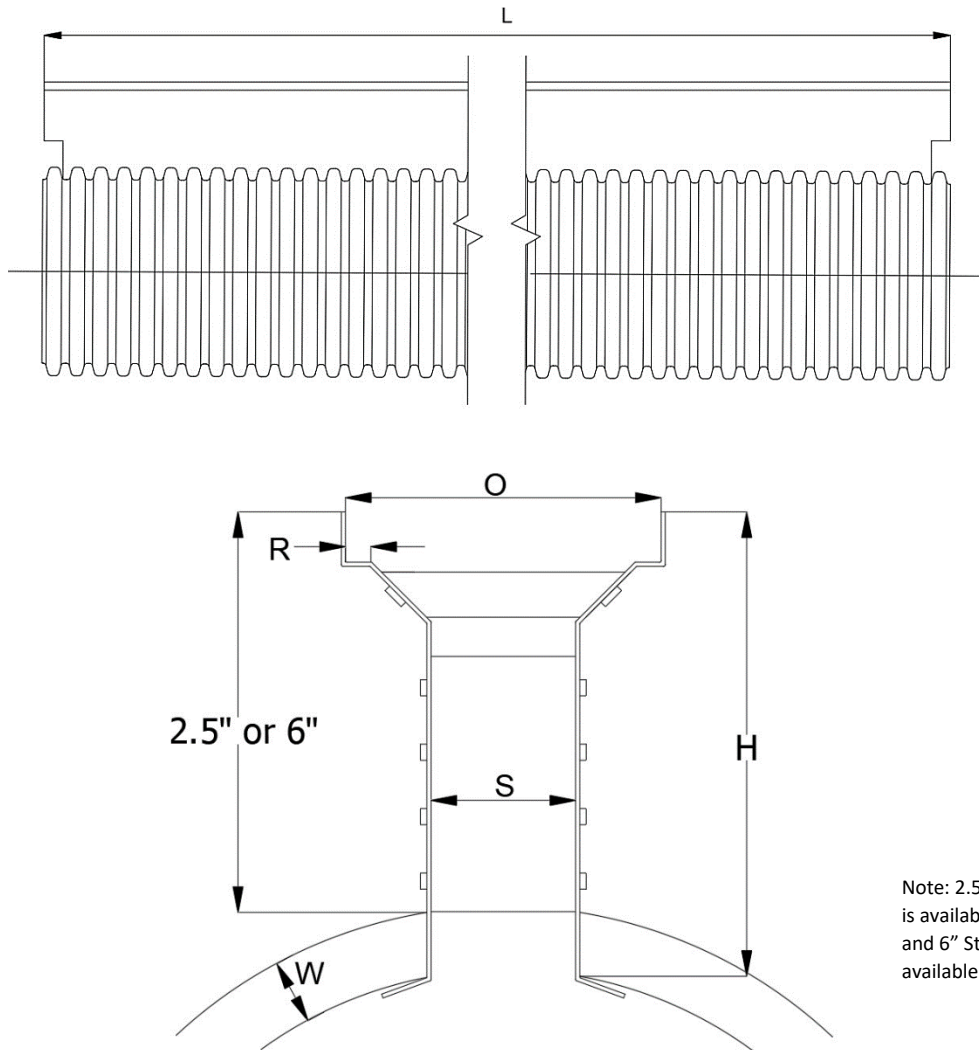


ADS DURASLOT® XL STANDARD DIMENSIONS

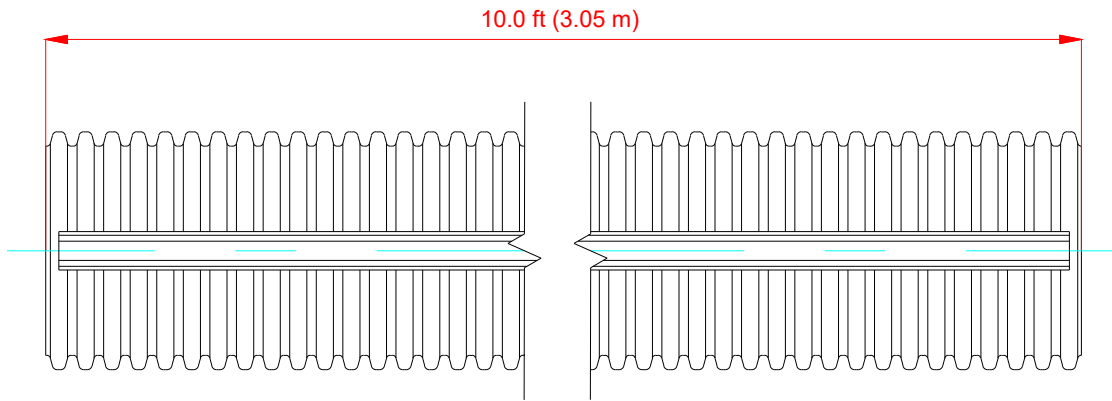
	Nominal Pipe Diameter in (mm)								
	6 (150)	8 (200)	10 (250)	12 (300)	15 (375)	18 (450)	24 (600)	30 (750)	36 (900)
L – Drain Grate Length	118.5 (3010)	118.5 (3010)	118.5 (3010)	118.5 (3010)	118.5 (3010)	118.5 (3010)	118.5 (3010)	118.5 (3010)	118.5 (3010)
H – 2.5" slot	3.0 (76)	3.0 (76)	3.0 (76)	3.5 (89)	3.75 (95)	4.0 (102)	4.75 (121)	5.0 (127)	5.25 (133)
H – 6.0" slot	6.5 (165)	6.5 (165)	6.5 (165)	7.0 (178)	7.0 (178)	7.0 (178)	7.25 (184)	8.25 (210)	8.25 (210)
O – Opening Width	5.0 (127)	5.0 (127)	5.0 (127)	5.0 (127)	5.0 (127)	5.0 (127)	5.0 (127)	5.0 (127)	5.0 (127)
R – Slot Width	0.316 (8)	0.316 (8)	0.316 (8)	0.316 (8)	0.316 (8)	0.316 (8)	0.316 (8)	0.316 (8)	0.316 (8)
S – Slot Width	2.25 (57)	2.25 (57)	2.25 (57)	2.25 (57)	2.25 (57)	2.25 (57)	2.25 (57)	2.25 (57)	2.25 (57)
W – Pipe Width with Corrugation	0.46 (12)	0.61 (15)	0.73 (19)	1.15 (29)	1.30 (33)	1.57 (40)	1.86 (47)	2.55 (65)	2.85 (72)

Note:

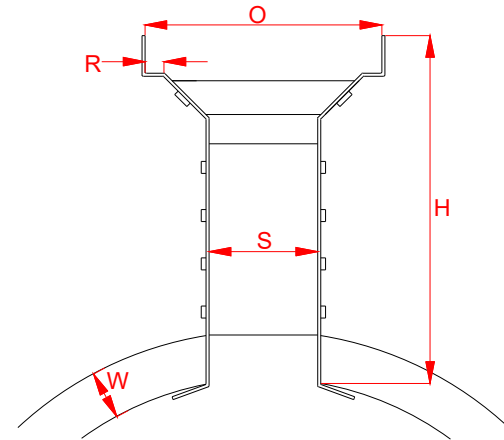
1. Custom slot heights available upon request. Production of custom slots will require approval by the Duraslot Project Engineer. Signed shop drawings also required from interested party.
2. Other grate material options available upon request. Contact local ADS representative for availability of grate material option.



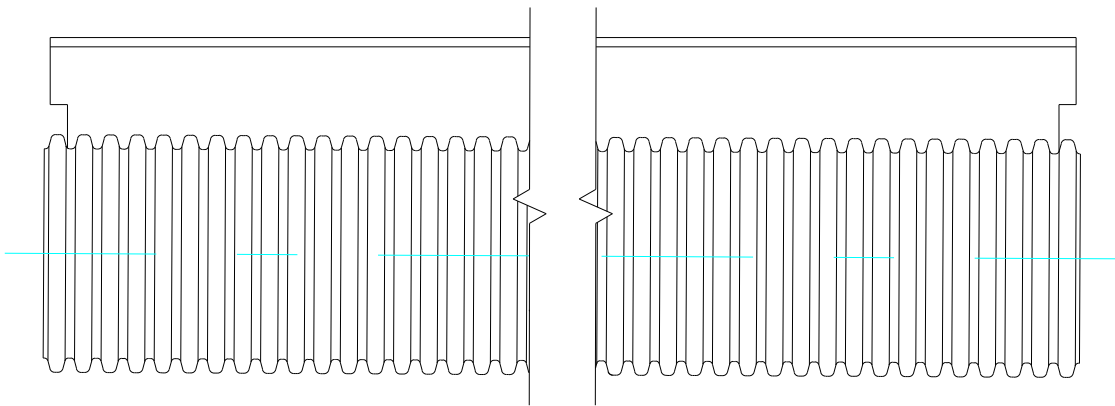
Note: 2.5" Standard Duraslot XL is available in 6" – 12" Ø pipe and 6" Standard Duraslot XL is available in 6" – 36" Ø pipe.



PLAN VIEW



CROSS SECTION



PROFILE VIEW

PIPE Ø, in (mm)	H, in (mm)	W, in (mm)	O, in (mm)	S, in (mm)	R, in (mm)	PRODUCT #
6 (150)	3.00 (76)	0.46 (13)	5.00 (127)	2.25 (57)	0.32 (8)	0620DSXL
6 (150)	6.50 (165)					0660DSXL
8 (200)	3.00 (76)	0.61 (15)				0820DSXL
8 (200)	6.50 (165)					0860DSXL
10 (250)	3.00 (76)	0.73 (19)				1020DSXL
10 (250)	6.50 (165)					1060DSXL
12 (300)	3.50 (89)	1.15 (29)				1220DSXL
12 (300)	7.00 (178)					1260DSXL
15 (375)	7.00 (178)	1.30 (33)				1560DSXL
18 (450)	7.00 (178)	1.57 (40)				1860DSXL
24 (600)	7.25 (184)	1.86 (40)				2460DSXL
30 (750)	8.25 (210)	2.55 (65)				3060DSXL
36 (900)	8.25 (210)	2.85 (72)	3660DSXL			

NOTES:

1. SEE GRATING DETAILS FOR SURFACE TREATMENT OPTIONS

© 2022 ADS, INC.

1	Updates to dimensions	KJS	05/19/2023	-
REV.	DESCRIPTION	BY	MM/DD/YY	CHK'D

ADVANCED DRAINAGE SYSTEMS, INC. ("ADS") HAS PREPARED THIS DETAIL BASED ON INFORMATION PROVIDED TO ADS. THIS DRAWING IS INTENDED TO DEPICT THE COMPONENTS AS REQUESTED. ADS HAS NOT PERFORMED ANY ENGINEERING OR DESIGN SERVICES FOR THIS PROJECT, NOR HAS ADS INDEPENDENTLY VERIFIED THE INFORMATION SUPPLIED. THE INSTALLATION DETAILS PROVIDED HEREIN ARE GENERAL RECOMMENDATIONS AND ARE NOT SPECIFIC FOR THIS PROJECT. THE DESIGN ENGINEER SHALL REVIEW THESE DETAILS PRIOR TO CONSTRUCTION. IT IS THE DESIGN ENGINEERS RESPONSIBILITY TO ENSURE THE DETAILS PROVIDED HEREIN MEETS OR EXCEEDS THE APPLICABLE NATIONAL, STATE, OR LOCAL REQUIREMENTS AND TO ENSURE THAT THE DETAILS PROVIDED HEREIN ARE ACCEPTABLE FOR THIS PROJECT.

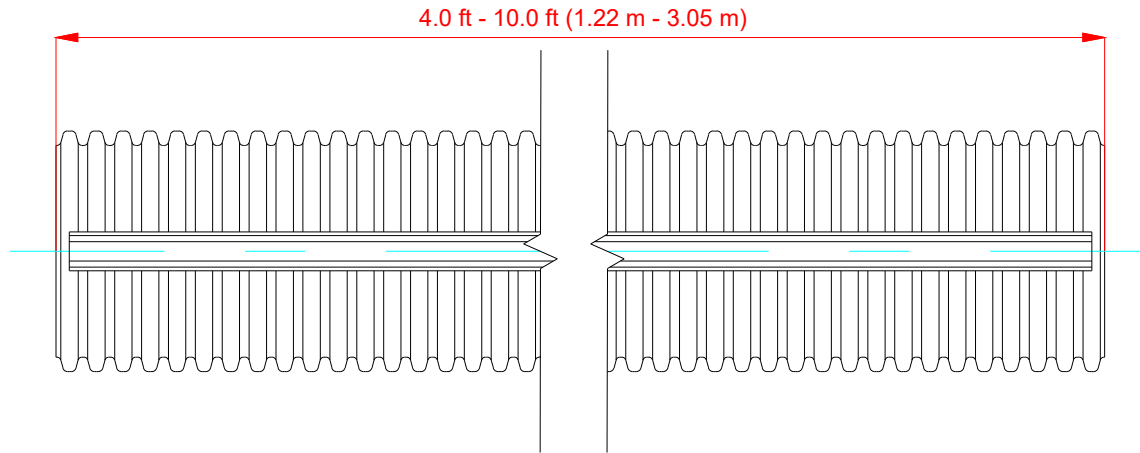
Duraslot XL Pipe
Standard Slot Height

DRAWING NUMBER: STD-1400B

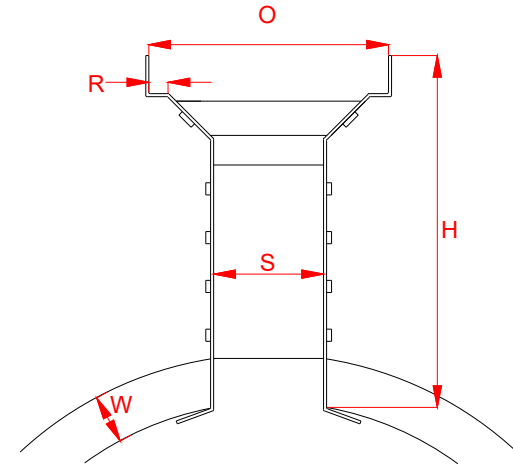


4640 TRUEMAN BLVD
HILLIARD, OHIO 43026

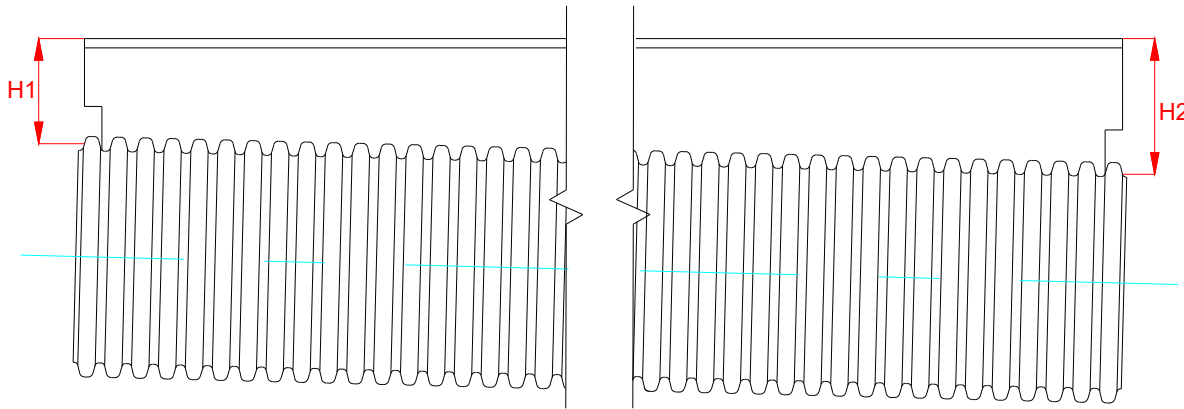
DRAWN BY:	KJS
DATE:	04-18-2023
CHK'D BY:	
SCALE:	NTS
SHEET:	1 OF 1



PLAN VIEW



CROSS SECTION



PROFILE VIEW

NOTES:

1. SEE GRATING DETAILS FOR SURFACE TREATMENT OPTIONS
2. H1 AND H2 VARY BASED ON PROJECT SPECIFICATIONS AND MAY NOT RESEMBLE THE IMAGES SHOWN ABOVE.

PIPE Ø, in (mm)	H1-H2, in (mm)	W, in (mm)	O, in (mm)	S, in (mm)	R, in (mm)	PRODUCT #
6 (150)	3.00 - 24.00 (76 - 610)	0.46 (13)	5.00 (127)	2.25 (57)	0.32 (8)	0690DSXL
8 (200)	3.00 - 24.00 (76 - 610)	0.61 (15)				0890DSXL
10 (250)	3.00 - 24.00 (76 - 610)	0.73 (19)				1090DSXL
12 (300)	3.50 - 24.00 (89 - 609)	1.15 (29)				1290DSXL
12 (300)	24.01 - 36.00 (610 - 914)					1290SDTXL
15 (375)	3.75 - 24.00 (95 - 609)	1.30 (33)				1590DSXL
15 (375)	24.01 - 36.00 (610 - 914)					1590SDTXL
18 (450)	4.00 - 24.00 (102 - 609)	1.57 (40)				1890DSXL
18 (450)	24.01 - 36.00 (610 - 914)					1890SDTXL
24 (600)	4.25 - 24.00 (121 - 609)	1.86 (40)				2490DSXL
24 (600)	24.01 - 36.00 (610 - 914)					2490SDTXL
30 (750)	5.00 - 24.00 (127 - 609)	2.55 (65)				3090DSXL
30 (750)	24.01 - 36.00 (610 - 914)					3090SDTXL
36 (900)	5.25 - 24.00 (133 - 609)	2.85 (72)				3690DSXL
36 (900)	24.01 - 36.00 (610 - 914)					3690SDTXL

© 2022 ADS, INC.

1	Updates to dimensions	KJS	05/19/2023	-
REV.	DESCRIPTION	BY	MM/DD/YY	CHK'D

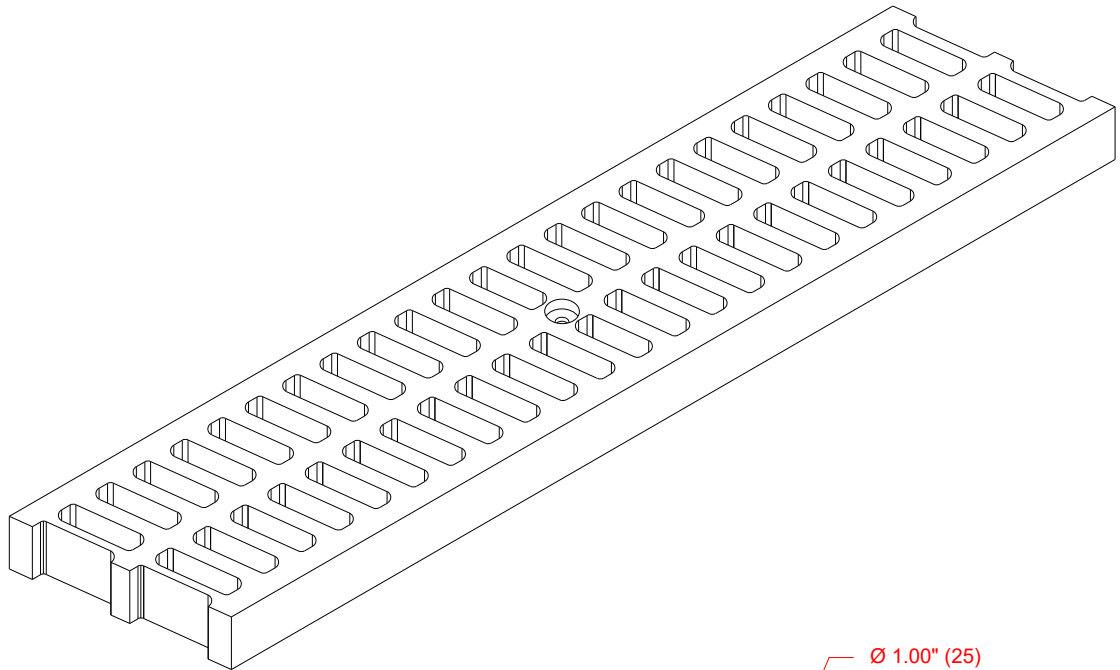
ADVANCED DRAINAGE SYSTEMS, INC. ("ADS") HAS PREPARED THIS DETAIL BASED ON INFORMATION PROVIDED TO ADS. THIS DRAWING IS INTENDED TO DEPICT THE COMPONENTS AS REQUESTED. ADS HAS NOT PERFORMED ANY ENGINEERING OR DESIGN SERVICES FOR THIS PROJECT, NOR HAS ADS INDEPENDENTLY VERIFIED THE INFORMATION SUPPLIED. THE INSTALLATION DETAILS PROVIDED HEREIN ARE GENERAL RECOMMENDATIONS AND ARE NOT SPECIFIC FOR THIS PROJECT. THE DESIGN ENGINEER SHALL REVIEW THESE DETAILS PRIOR TO CONSTRUCTION. IT IS THE DESIGN ENGINEERS RESPONSIBILITY TO ENSURE THE DETAILS PROVIDED HEREIN MEETS OR EXCEEDS THE APPLICABLE NATIONAL, STATE, OR LOCAL REQUIREMENTS AND TO ENSURE THAT THE DETAILS PROVIDED HEREIN ARE ACCEPTABLE FOR THIS PROJECT.

**Duraslot XL Pipe
Custom Slot Height**
DRAWING NUMBER: STD-1401B



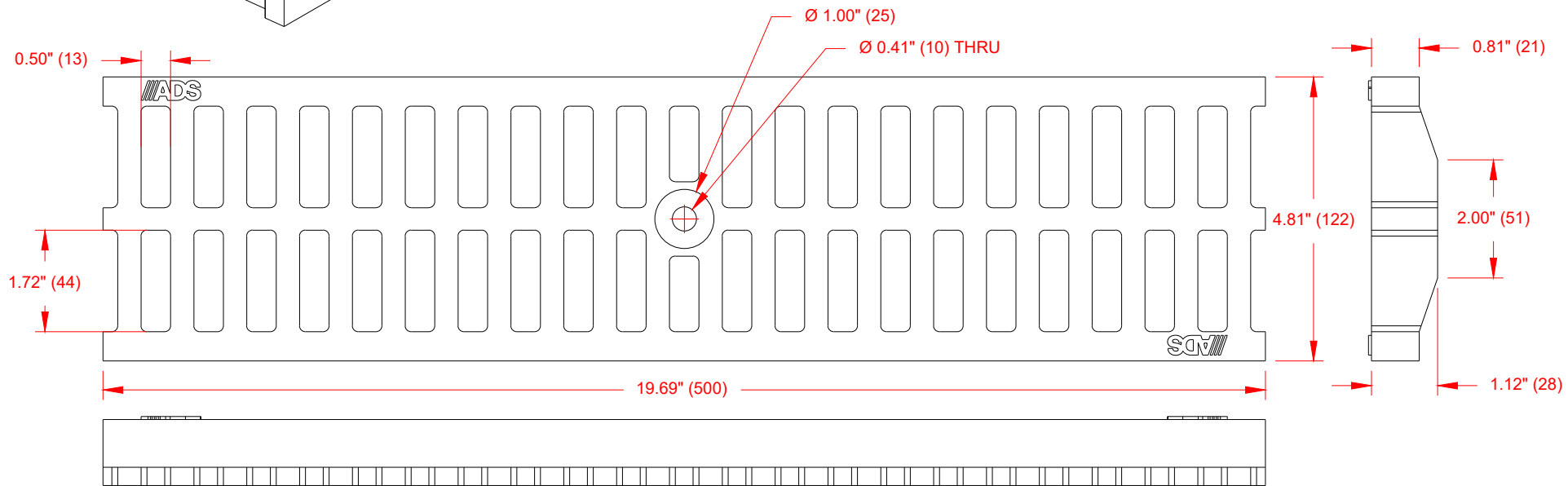
4640 TRUEMAN BLVD
HILLIARD, OHIO 43026

DRAWN BY:	KJS
DATE:	04-18-2023
SCALE:	NTS
SHEET:	1 OF 1



STANDARD GRATE INFORMATION

OPEN AREA (SQ IN)	OPEN AREA (%)	PRODUCT #
37.44	39.53	0520DIS



© 2022 ADS, INC.

REV.	DESCRIPTION	BY	MM/DD/YY	CHK'D
0	-	-	-	-

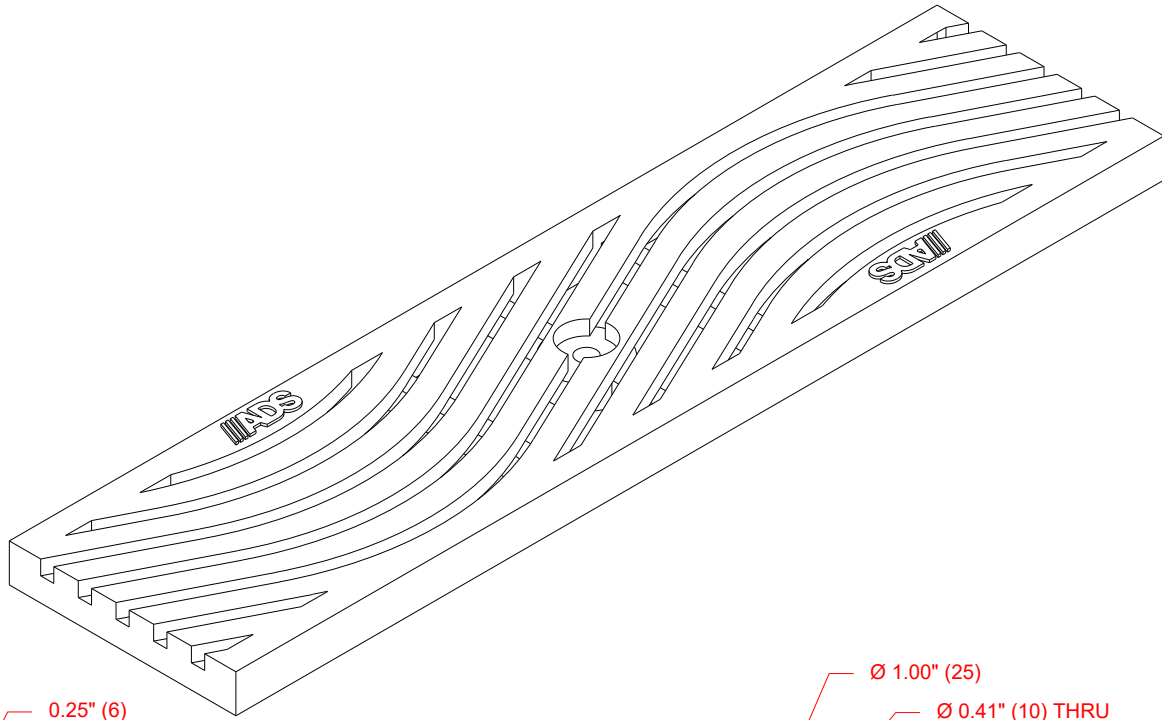
ADVANCED DRAINAGE SYSTEMS, INC. ("ADS") HAS PREPARED THIS DETAIL BASED ON INFORMATION PROVIDED TO ADS. THIS DRAWING IS INTENDED TO DEPICT THE COMPONENTS AS REQUESTED. ADS HAS NOT PERFORMED ANY ENGINEERING OR DESIGN SERVICES FOR THIS PROJECT. NOR HAS ADS INDEPENDENTLY VERIFIED THE INFORMATION SUPPLIED. THE INSTALLATION DETAILS PROVIDED HEREIN ARE GENERAL RECOMMENDATIONS AND ARE NOT SPECIFIC FOR THIS PROJECT. THE DESIGN ENGINEER SHALL REVIEW THESE DETAILS PRIOR TO CONSTRUCTION. IT IS THE DESIGN ENGINEERS RESPONSIBILITY TO ENSURE THE DETAILS PROVIDED HEREIN MEETS OR EXCEEDS THE APPLICABLE NATIONAL, STATE, OR LOCAL REQUIREMENTS AND TO ENSURE THAT THE DETAILS PROVIDED HEREIN ARE ACCEPTABLE FOR THIS PROJECT.

Duraslot XL Standard Grate
DRAWING NUMBER: STD-1451



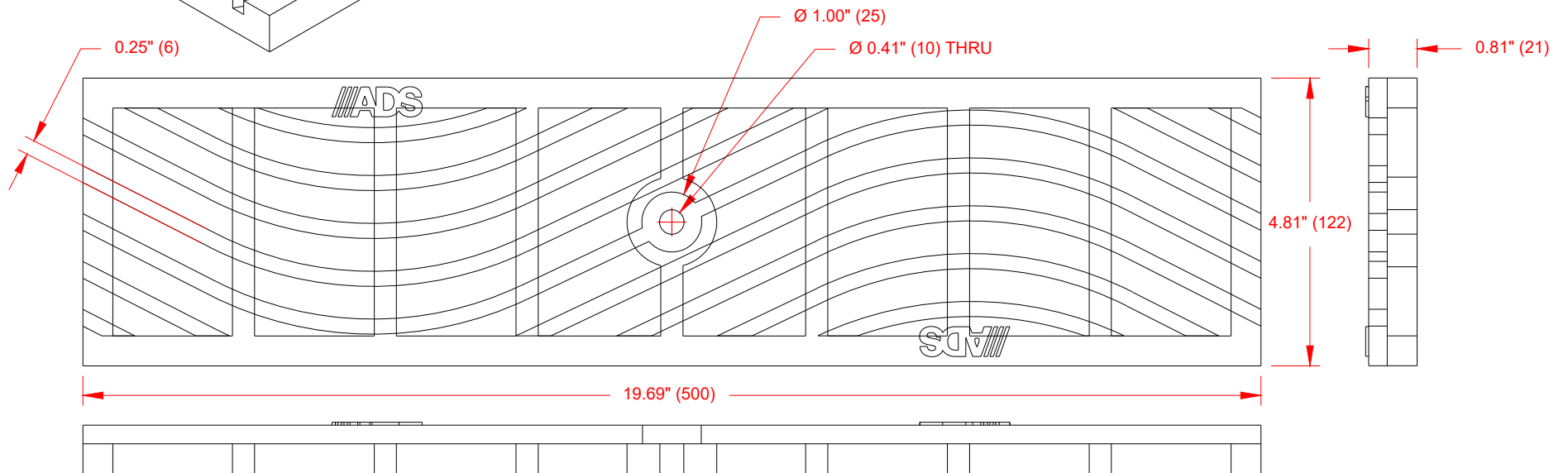
4640 TRUEMAN BLVD
HILLIARD, OHIO 43026

DRAWN BY:	KJS
DATE:	04-18-2023
CHK'D BY:	
SCALE:	NTS
SHEET:	1 OF 1



PEDESTRIAN GRATE INFORMATION

OPEN AREA (SQ IN)	OPEN AREA (%)	PRODUCT #
25.50	26.92	0520DIP



© 2022 ADS, INC.

REV.	DESCRIPTION	BY	MM/DD/YY	CHK'D
0	-	-	-	-

ADVANCED DRAINAGE SYSTEMS, INC. ("ADS") HAS PREPARED THIS DETAIL BASED ON INFORMATION PROVIDED TO ADS. THIS DRAWING IS INTENDED TO DEPICT THE COMPONENTS AS REQUESTED. ADS HAS NOT PERFORMED ANY ENGINEERING OR DESIGN SERVICES FOR THIS PROJECT, NOR HAS ADS INDEPENDENTLY VERIFIED THE INFORMATION SUPPLIED. THE INSTALLATION DETAILS PROVIDED HEREIN ARE GENERAL RECOMMENDATIONS AND ARE NOT SPECIFIC FOR THIS PROJECT. THE DESIGN ENGINEER SHALL REVIEW THESE DETAILS PRIOR TO CONSTRUCTION. IT IS THE DESIGN ENGINEERS RESPONSIBILITY TO ENSURE THE DETAILS PROVIDED HEREIN MEETS OR EXCEEDS THE APPLICABLE NATIONAL, STATE, OR LOCAL REQUIREMENTS AND TO ENSURE THAT THE DETAILS PROVIDED HEREIN ARE ACCEPTABLE FOR THIS PROJECT.

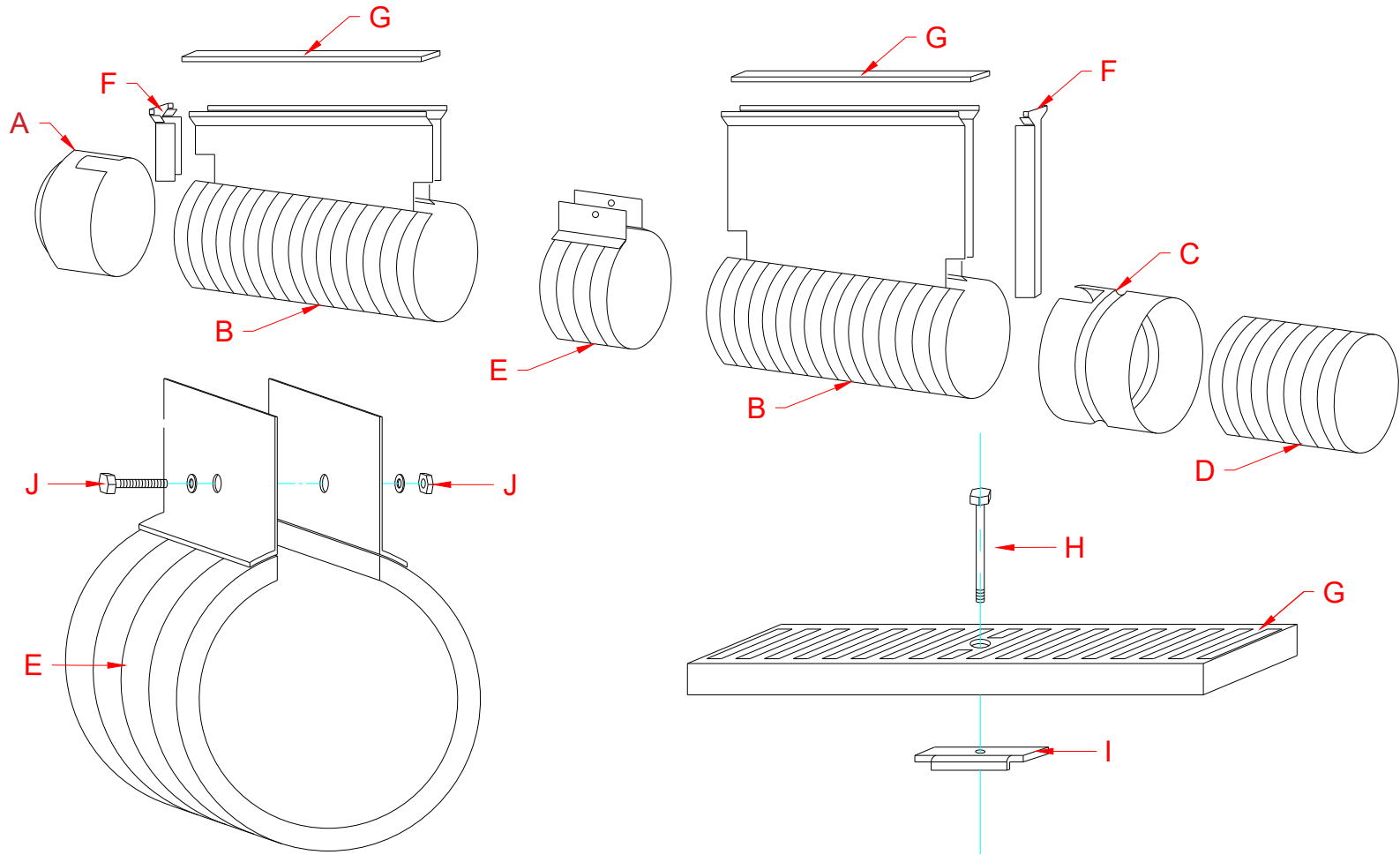
Duraslot XL Pedestrian Grate

DRAWING NUMBER: STD-1452



4640 TRUEMAN BLVD
HILLIARD, OHIO 43026

DRAWN BY:	KJS
DATE:	04-18-2023
CHK'D BY:	
SCALE:	NTS
SHEET:	1 OF 1



- A. Duraslot XL End Cap
- B. Duraslot XL Pipe
- C. Duraslot XL Adapter
- D. ADS N-12 HDPE or HP Storm Pipe or Plain End Fitting
- E. Duraslot XL Coupler Band
- F. Duraslot XL Slot Cap
- G. 5" Wide Grate (Provided by ADS or Other)
- H. $\frac{5}{16}$ " - 18 Locking Bolt (Bolt Design Varies by Grate Design)

- I. Locking Plate with $\frac{5}{16}$ " - 18 Nut
- J. Hex Head Assembly Kit:
 $\frac{5}{16}$ " Hex Head Screw x $3\frac{1}{2}$ " Long w/
 (2) Washers & $\frac{5}{16}$ " Hex Nut

NOTE: - Slot height may vary per project
 - Each Cap (A) & Adapter (C) comes with an End Plate (F).
 - Coupler Band (E) comes with a Hex Head Assembly Kit (J)

© 2022 ADS, INC.

1	Updates to callouts	KJS	05/19/2023	-
REV.	DESCRIPTION	BY	MM/DD/YY	CHK'D

ADVANCED DRAINAGE SYSTEMS, INC. ("ADS") HAS PREPARED THIS DETAIL BASED ON INFORMATION PROVIDED TO ADS. THIS DRAWING IS INTENDED TO DEPICT THE COMPONENTS AS REQUESTED. ADS HAS NOT PERFORMED ANY ENGINEERING OR DESIGN SERVICES FOR THIS PROJECT, NOR HAS ADS INDEPENDENTLY VERIFIED THE INFORMATION SUPPLIED. THE INSTALLATION DETAILS PROVIDED HEREIN ARE GENERAL RECOMMENDATIONS AND ARE NOT SPECIFIC FOR THIS PROJECT. THE DESIGN ENGINEER SHALL REVIEW THESE DETAILS PRIOR TO CONSTRUCTION. IT IS THE DESIGN ENGINEERS RESPONSIBILITY TO ENSURE THE DETAILS PROVIDED HEREIN MEETS OR EXCEEDS THE APPLICABLE NATIONAL, STATE, OR LOCAL REQUIREMENTS AND TO ENSURE THAT THE DETAILS PROVIDED HEREIN ARE ACCEPTABLE FOR THIS PROJECT.

Duraslot XL Assembly	
DRAWING NUMBER:	STD-1480B



4640 TRUEMAN BLVD
 HILLIARD, OHIO 43026

DRAWN BY:	KJS
DATE:	04-18-2023
CR'D BY:	
SCALE:	NTS
SHEET	1 OF 1