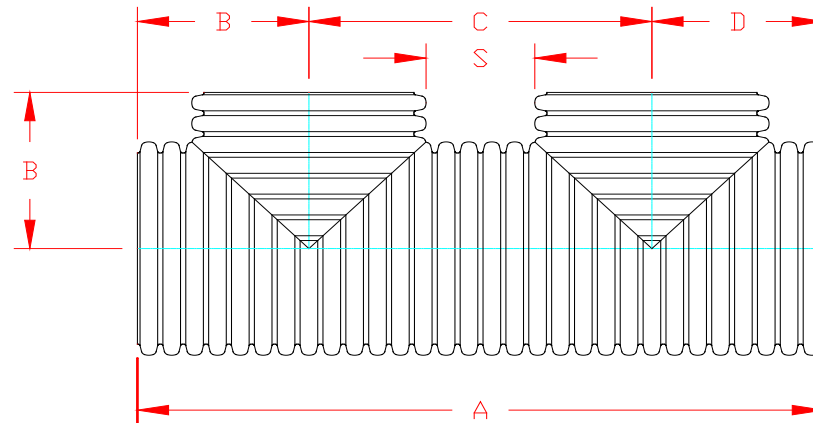


**HP STORM DUAL WALL FABRICATED "SOIL TIGHT" "PLAIN END"
DOUBLE MANIFOLD 12" - 30" DIAMETER**

PART #	PIPE SIZE	A	B	C	D	S
1252ANP	12 in (300 mm)	47.3 in (1200 mm)	11.8 in (300 mm)	23.6 in (600 mm)	11.8 in (300 mm)	9.1 in (230 mm)
1552ANP	15 in (375 mm)	56.8 in (1442 mm)	14.2 in (360 mm)	28.4 in (721 mm)	14.2 in (360 mm)	10.7 in (271 mm)
1852ANP	18 in (450 mm)	70.9 in (1801 mm)	17.7 in (450 mm)	35.4 in (900 mm)	17.7 in (450 mm)	14.1 in (357 mm)
2152ANP	21 in (525 mm)	77.0 in (1955 mm)	19.2 in (489 mm)	38.5 in (978 mm)	19.2 in (489 mm)	13.8 in (350 mm)
2452ANP	24 in (600 mm)	82.2 in (2087 mm)	20.5 in (522 mm)	41.1 in (1043 mm)	20.5 in (522 mm)	12.6 in (321 mm)
3052ANP	30 in (750 mm)	101.0 in (2565 mm)	25.2 in (641 mm)	50.5 in (1282 mm)	25.2 in (641 mm)	15.0 in (382 mm)



NOTE: ALL FITTINGS DIMENSIONS ARE FOR REFERENCE ONLY

 Advanced Drainage Systems, Inc.	DRAWING #:	13050	
	DRAWN BY:	TJR	10/13/2016
	APPROVED BY:		
	REVISIONS:		