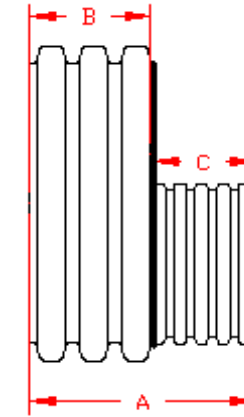


DUAL WALL FABRICATED REDUCERS
21"×4" - 21"×12" DIAMETER

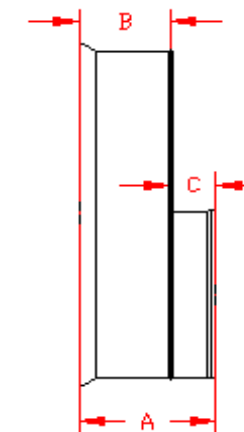
PART #	PIPE SIZE	A	B	C	JOINT
2170AN	21 x 4 in (525 x 100 mm)	14.3 in (362 mm)	9.0 in (229 mm)	5.3 in (133 mm)	*
2170AN65B	21 x 4 in (525 x 100 mm)	11.5 in (292 mm)	7.0 in (178 mm)	2.4 in (60 mm)	WT
2171AN	21 x 6 in (525 x 150 mm)	15.2 in (386 mm)	9.0 in (229 mm)	6.2 in (157 mm)	*
2171AN65B	21 x 6 in (525 x 150 mm)	12.9 in (327 mm)	7.0 in (178 mm)	3.5 in (89 mm)	WT
2172AN	21 x 8 in (525 x 200 mm)	15.7 in (399 mm)	9.0 in (229 mm)	6.7 in (171 mm)	*
2172AN65B	21 x 8 in (525 x 200 mm)	13.4 in (340 mm)	7.0 in (178 mm)	4.3 in (108 mm)	WT
2173AN	21 x 10 in (525 x 250 mm)	16.6 in (421 mm)	9.0 in (229 mm)	7.6 in (192 mm)	*
2173AN65B	21 x 10 in (525 x 250 mm)	14.0 in (356 mm)	7.0 in (178 mm)	5.3 in (133 mm)	WT
2174AN	21 x 12 in (525 x 300 mm)	16.8 in (427 mm)	9.0 in (229 mm)	9.2 in (234 mm)	*
2174AN65B	21 x 12 in (525 x 300 mm)	15.9 in (404 mm)	7.0 in (178 mm)	6.5 in (165 mm)	WT

* = PLAIN END
 ST = SOIL TIGHT
 WT = WATER TIGHT

** LIMITED AVAILABILITY. PLEASE SEE INJECTION MOLDED FITTING SECTION FOR OTHER AVAILABLE FITTINGS



PLAIN END



WT (INCLUDES 2 GASKETS)

NOTE: ALL FITTINGS DIMENSIONS ARE FOR REFERENCE ONLY

© 2023 Advanced Drainage Systems, Inc.

 Advanced Drainage Systems, Inc.	DRAWING #:	2512	
	DRAWN BY:	TJR	4/28/2016
	APPROVED BY:		
	REVISIONS:		