

Water Management Product Catalog



Table of Contents

Product Applications

Matrix of applications for pipe products 2-3

Pipe

Pipe Descriptions & Specifications 4

High Performance Storm & Sanitary 5

Dual Wall 6-8

Single Wall

• Characteristics 9

• Regular & Heavy Duty Pipe 10-11

• Co-Ex 11

N-12® Flex Pipe 11

ADS PolyFlex® Pressure Pipe

• Potable Copper Tube Size (CTS) 12

• SIDR IPS NSF Potable Grade 13

• SIDR IPS Standard Grade 14

• Utility Grade 15

Fittings

• Dual Wall 16-28

• Nyloplast® Fittings 29-32

• Inserta Tee® 33-35

• Inserta Tee Hole Saws 36-37

• Single Wall 38-41

• Hickenbottom® & Precision Intake 42

• Specialty Fittings 43

Nyloplast®

• Drain Basins 44

• Inline Drains 45

• Inspection Ports 46

• Curb Inlet Structures 47

• Road & Highway Structures 48

• Grates 49

• Risers, Sump Inserts & Add-A-Branch 50

• Weir Structures 51

Retention/Detention Systems

• Land Max® Manifolds 52

• Manifold Bends 53

• Land Max Accessories 54-55

• StormTech® Chambers & End Caps 56

• StormTech Top & Bottom Inlets 57-58

• StormTech Bends 59

• StormTech Manifolds 60

• Rainwater Harvesting 61

AdvanEdge® 62

Stormwater Treatment

• BioFilters 63

• Separators 64

• Water Quality Units 64

• FlexStorm® Inlet Filters 65-67

Linear Drains

Duraslot® Slotted Drain 68-71

Duraslot XL Trench Drain 72-74

Onsite Chambers 75-76

Septic Stack™ 76

Waste Water Accessories 77

Foundation Drainage & Accessories 78

Geosynthetics

• Nonwovens 79-80

• Wovens 81

• Geogrids 82

• Paving Fabrics 82



• Silt Fence 82

• Erosion Control Blankets 83

• Turf Reinforcement Mats 83

• Ground Protection Mats 83

• Septic Fabrics 84

| | |
|---|---|
|  <p>RESALE ITEM</p> | <p>RESALE ITEMS – MARKED WITH </p> <p>– ARE PRODUCTS OFFERED FOR SALE BUT NOT MANUFACTURED BY ADS.</p> |
|---|---|

METRIC AND IMPERIAL UNITS ARE PROVIDED ON PRODUCTS THROUGHOUT THE CATALOG. PRODUCTS SUBJECT TO CHANGE WITHOUT NOTICE. ALL SALES OF OUR PRODUCT ARE SUBJECT TO A LIMITED WARRANTY AND PURCHASERS ARE SOLELY RESPONSIBLE FOR INSTALLATION AND USE OF OUR PRODUCTS AND DETERMINING WHETHER A PRODUCT IS SUITED FOR ANY SPECIFIC NEEDS. PLEASE CONSULT A FULL COPY OF TERMS AND CONDITIONS FOR SALE FOR FURTHER DETAILS.

Product Applications

| Product Type | Dual Wall | | | | | | Triplewall |
|---|----------------------------------|---------|----------------|-------------|---------------------|----------|--------------|
| | High-Density Polyethylene (HDPE) | | | | | PP | PP |
| | N-12® WT | N-12 ST | N-12 Plain End | Mega Green® | N-12 Flex Dual Wall | HP Storm | SaniTite® HP |
| Construction products | | | | | | | |
| Storm sewer | • | • | • | • | | • | • |
| Retention/Detention | • | • | • | • | | • | |
| Culverts/Cross drains | • | • | • | • | | • | • |
| Slope/Edge drains | • | • | • | • | | • | |
| Mining/Forestry/Industrial | • | • | • | • | | • | |
| Residential products | | | | | | | |
| Foundations/Edge drains | • | • | • | • | | | |
| Downspouts/Roof drainage | • | • | • | • | | | |
| Culverts | • | • | • | • | | • | |
| Sub-drainage | | | | | | | |
| On-site waste management | | | | | | | |
| Recreation products | | | | | | | |
| Paths/Walkways/Edge drains | • | • | • | • | | | |
| Sports playing fields | • | • | • | • | | • | |
| Culverts | • | • | • | • | | | |
| Parking lot drainage | • | • | • | • | | • | |
| Golf course drainage | | • | • | • | | | |
| Landscape/Sub drainage | | | | | | | |
| Agriculture Products | | | | | | | |
| Field drainage | | | | | • | | |
| Land reclamation | • | • | • | • | • | | |
| Terracing | • | • | • | • | • | | |
| Ditch Enclosures | • | • | • | • | • | • | |
| Sanitary Sewer/Industrial Products | | | | | | | |
| Sanitary Sewer Lines | | | | | | | • |
| Industrial waste | | | | | | | • |

Suggested products and applications are provided for general guidance only. Contact a sales representative to discuss the products acceptable for specific applications.

Product Applications

| | Single Wall High-Density Polyethylene (HDPE) | | |
|------------------------------|--|------------|-------|
| Product Type | Regular | Heavy Duty | Co-Ex |
| Construction products | | | |
| Storm sewer | | | |
| Retention/Detention | • | | |
| Culverts/Cross drains | • | • | |
| Slope/Edge drains | • | • | |
| Mining/Forestry/Industrial | | | |
| Residential Products | | | |
| Foundation/Edge drains | | • | |
| Downspouts/Roof drainage | | • | |
| Culverts | • | • | |
| Sub drainage | | • | |
| On-site waste management | | | |
| Recreation Products | | | |
| Paths/Walkways/Edge drains | | • | |
| Sports playing fields | • | • | |
| Culverts | • | • | |
| Parking lot drainage | • | • | |
| Golf course drainage | • | • | |
| Landscape/Sub drainage | • | • | |
| Agriculture Products | | | |
| Field drainage | | • | • |
| Land reclamation | | • | • |
| Waterways | • | • | |
| Terracing | • | • | |
| Ditch Enclosures | • | • | |

Pipe Descriptions, Specifications

HP Storm, SaniTite HP & N-12 Dual Wall Pipe

HP Storm (polypropylene)

| Product | Description | Diameter | Connections | Specifications/Performance |
|----------|--|---------------------------------|--|--|
| HP Storm | Annular corrugations with smooth interior surface. Pipe is bell-and-spigot with the bell reinforced with a polymer wrap. | 300-1500 mm (12"-60") dual wall | Bell-and-spigot with a rubber gasket meeting ASTM D3212. | 300-1500 mm (12"-60") meets or exceeds CSA B182.12 and ASTM F2881. |

SaniTite HP (polypropylene)

| Product | Description | Diameter | Connections | Specifications/Performance |
|-------------|--|---|---|--|
| SaniTite HP | Annular corrugations with smooth interior wall. 750-1500 mm (30"-60") has smooth exterior surface. Pipe is bell-and-spigot. Bell reinforced with polymer wrap and spigot having two gaskets. | 300-750 mm (12"-30") dual wall 750-1500 mm (30"-60") triple wall | Bell-and-spigot with two rubber gaskets meeting CSA B182.13 ASTM D3212. | 300-1500 mm (12"-60") meets CSA B182.13. 300-1500 mm (12"-60") joints meet the requirements of CSA B182.13 and ASTM D3212. |

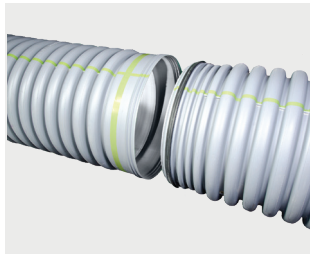
N-12 (high-density polyethylene)

| Product | Description | Diameter | Connections | Specifications/Performance |
|--------------------------------------|--|----------------------|--|--|
| N-12 Watertight (WT) IB | Annular corrugations with smooth interior wall. Pipe is bell-and-spigot with a gasket for watertight connection. | 100-1500 mm (4"-60") | Bell-and-spigot with rubber gasket meeting CSA B182.8 or BNQ 3624-120. | 100-1500 mm (4"-10") meets CSA B182.8 or BNQ 3624-120. Joints meet the requirements of CSA B182.8 or BNQ 3624-120. |
| N-12 Soil Tight (ST) IB | Annular corrugations with smooth interior wall. Soil tight connection. | 100-750 mm (4"-30") | Bell-and-spigot with rubber gasket meeting CSA B182.8 or BNQ 3624-120. | 100-750 mm (4"-30") meets CSA B182.8, Type 2 or BNQ 3624-120. |
| N-12 Plain End | Annular corrugations with smooth interior wall. | 100-1500 mm (4"-60") | External snap or split band couplers depending on diameter. | 100-1500 mm (4"-60") meets CSA B182.8, Type 3 or BNQ 3624-120. |
| Mega Green Watertight (WT) IB | Annular corrugations with smooth interior wall. Pipe is bell-and-spigot with a gasket for watertight connection. | 100-1500 mm (4"-60") | Bell-and-spigot with rubber gasket meeting CSA B182.8 or BNQ 3624-120. | 100-1500mm (4" - 60") meets ASTM F2648. Joints meet the requirement of ASTM D3212. |
| Mega Green Soil Tight (ST) IB | Annular corrugations with smooth interior wall. Soil tight connection. | 100-750 mm (4"-30") | Bell-and-spigot with rubber gasket meeting CSA B182.8 or BNQ 3624-120. | 100-750mm (4" - 30") meets ASTM F2648. |
| N-12 Flex | Annular corrugations with smooth interior wall. Soil tight connection. | 200-375 mm (8"-15") | External split couplers. | |

High-Performance Pipe

HP Storm & SaniTite HP Pipe

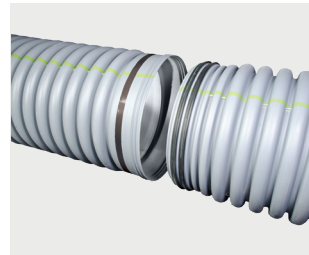
HP Storm per CSA B182.12



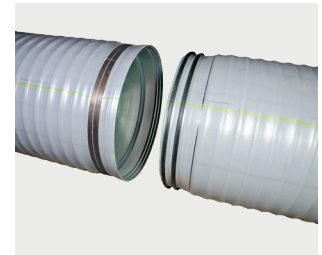
HP Storm

| Diameter mm (in) | Length m (ft) | Product Code |
|---------------------|------------------|-----------------|
| 300 (12") | 4 (13') | 12650013IBPL2EA |
| | 6 (20') | 12650020IBPL2EA |
| 150 (15") | 4 (13') | 15650013IBPL2EA |
| | 6 (20') | 15650020IBPL2EA |
| 450 (18") | 4 (13') | 18650013IBPL2EA |
| | 6 (20') | 18650020IBPL2EA |
| 600 (24") | 4 (13') | 24650013IBPL2EA |
| | 6 (20') | 24650020IBPL2EA |
| 750 (30") | 4 (13') | 30650013IBPL2EA |
| | 6 (20') | 30650020IBPL2EA |
| 900 (36") | 4 (13') | 36650013IBPL2EA |
| | 6 (20') | 36650020IBPL2EA |
| 1050 (42") | 4 (13') | 42650013IBPL2EA |
| | 6 (20') | 42650020IBPL2EA |
| 1200 (48") | 4 (13') | 48650013IBPL2EA |
| | 6 (20') | 48650020IBPL2EA |
| 1500 (60") | 4 (13') | 60650013IBPL2EA |
| | 6 (20') | 60650020IBPL2EA |

SaniTite HP per CSA B182.13



Dual Wall SaniTite HP



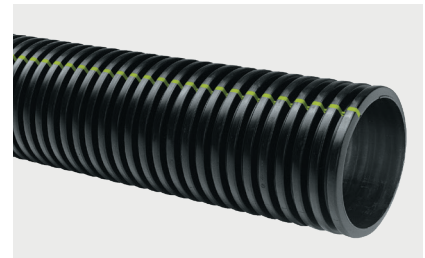
Triple Wall SaniTite HP

| Diameter mm (in) | Length m (ft) | Style | Product Code |
|---------------------|------------------|-------------|------------------|
| 300 (12") | 4 (13') | Dual wall | 12300013IBPPEA |
| | 6 (20') | Dual wall | 12300020IBPPEA |
| 150 (15") | 4 (13') | Dual wall | 15300013IBPPEA |
| | 6 (20') | Dual wall | 15300020IBPPEA |
| 450 (18") | 4 (13') | Dual wall | 18300013IBPPEA |
| | 6 (20') | Dual wall | 18300020IBPPEA |
| 525 (21") | 4 (13') | Dual wall | 21300013IBPPEA |
| | 6 (20') | Dual wall | 21300029IBPPEA |
| 600 (24") | 4 (13') | Dual wall | 24300013IBPPEA |
| | 6 (20') | Dual wall | 24300020IBPPEA |
| 750 (30") | 6 (20') | Dual wall | 30300020IBPPEA |
| | 4 (13') | Triple wall | 30300013IBHPEA |
| 900 (36") | 6 (20') | Triple wall | 30300020IBHPEA |
| | 4 (13') | Triple wall | 36300013IBHPEA |
| 1050 (42") | 6 (20') | Triple wall | 36300020IBHPEA |
| | 4 (13') | Triple wall | 42300013IBHPEA |
| 1200 (48") | 6 (20') | Triple wall | 42300020IBHPEA |
| | 4 (13') | Triple wall | 48300013IBHPEA |
| 1500 (60") | 6 (20') | Triple wall | 48300020IBHPEA |
| | 4.9 (16.3) | Triple wall | 60300016.3IBHPEA |
| | 6 (20') | Triple wall | 60300020IBHPEA |

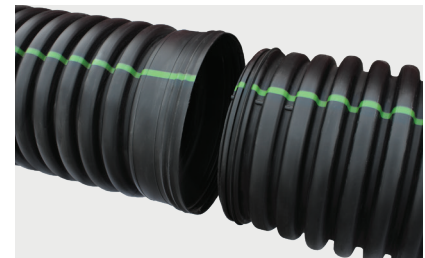
Dual Wall HDPE Pipe

100-1500 mm N-12 Plain End, ST & WT per CSA B182.8 & BNQ 3624-120

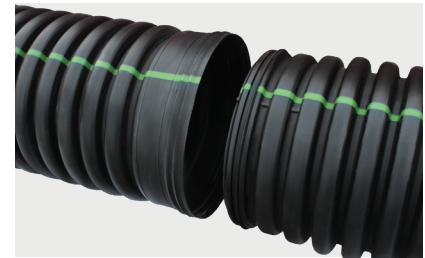
| Diameter mm (in) | Length m (ft) | Style | N-12 Plain End | N-12 ST | N-12 WT |
|------------------|---------------|-------|----------------|--------------|--------------|
| 100 (4") | 6 (20') | Solid | | | 04650020IBEA |
| | | Perf | | 04110020IBEA | 04610020IBEA |
| | | Sock | | 04230020IBEA | 04630020IBEA |
| 150 (6") | 6 (20') | Solid | | | 06650020IBEA |
| | | Perf | | 06110020IBEA | 06610020IBEA |
| | | Sock | | 06230020IBEA | 06630020IBEA |
| 200 (8") | 6 (20') | Solid | | | 08650020IBEA |
| | | Perf | | 08110020IBEA | 08610020IBEA |
| | | Sock | | 08230020IBEA | 08630020IBEA |
| 250 (10") | 6 (20') | Solid | | | 10650020IBEA |
| | | Perf | | 10110020IBEA | 10610020IBEA |
| | | Sock | | 10230020IBEA | 10630020IBEA |
| 300 (12") | 6 (20') | Solid | 12950020EA | | 12650020IBEA |
| | | Perf | 12910020EA | 12810020IBEA | |
| | | Sock | 12930020EA | 12830020IBEA | |
| 375 (15") | 6 (20') | Solid | 15950020EA | | 15650020IBEA |
| | | Perf | 15910020EA | 15810020IBEA | |
| | | Sock | 15930020EA | 15830020IBEA | |
| 450 (18") | 6 (20') | Solid | 18950020EA | | 18650020IBEA |
| | | Perf | 18910020EA | 18810020IBEA | |
| | | Sock | 18930020EA | 18830020IBEA | |
| 525 (21") | 6 (20') | Solid | 21950020EA | | 21650020IBEA |
| | | Perf | 21910020EA | 21810020IBEA | |
| | | Sock | 21930020EA | 21830020IBEA | |
| 600 (24") | 6 (20') | Solid | 24950020EA | | 24650020IBEA |
| | | Perf | 24910020EA | 24810020IBEA | |
| | | Sock | 24930020EA | 24830020IBEA | |
| 750 (30") | 6 (20') | Solid | 30950020EA | | 30650020IBEA |
| | | Perf | 30910020EA | 30810020IBEA | |
| | | Sock | | 30830020IBEA | |
| 900 (36") | 6 (20') | Solid | 36950019EA | | 36650020IBEA |
| | | Perf | | | 36610020IBEA |
| 1050 (42") | 6 (20') | Solid | | | 42650020IBEA |
| | | Perf | | | 42610020IBEA |
| 1200 (48") | 6 (20') | Solid | | | 48650020IBEA |
| | | Perf | | | 48610020IBEA |
| 1500 (60") | 6 (20') | Solid | | | 60650020IBEA |
| | | Perf | | | 60610020IBEA |



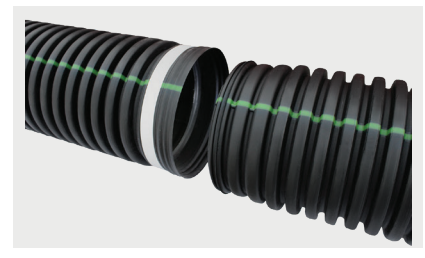
N-12 Plain End per CSA/BNQ



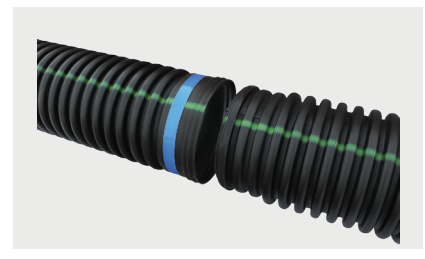
100-250 mm N-12 ST per CSA/BNQ



100-250 mm N-12 WT per CSA/BNQ



300-750 mm N-12 ST per CSA/BNQ

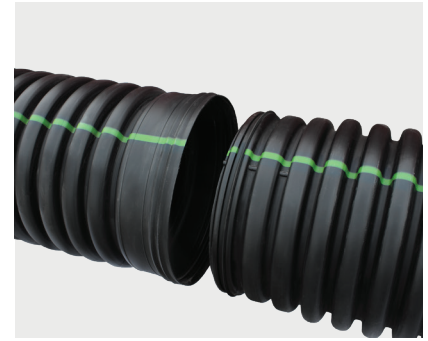


300-1500 mm N-12 WT per CSA/BNQ

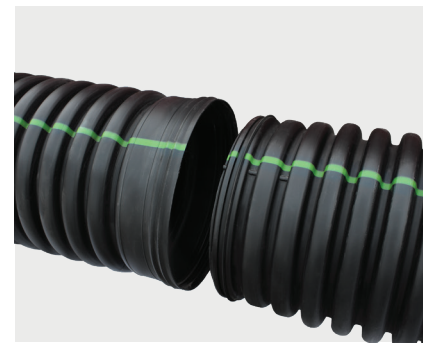
Dual Wall HDPE Pipe

100-1500 mm N-12 ST & N-12 WT per ASTM F2648

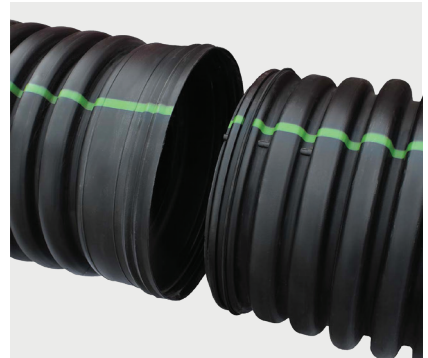
| Diameter mm (in) | Length m (ft) | Style | N-12 ST | N-12 WT |
|------------------|---------------|-------|--------------|--------------|
| 100 (4") | 6 (20') | Solid | 04150020IBDW | 04650020IBDW |
| | | Perf | 04110020IBDW | |
| | | Sock | 04230020IBDW | |
| 150 (6") | 6 (20') | Solid | 06150020IBDW | 06650020IBDW |
| | | Perf | 06110020IBDW | |
| | | Sock | 06230020IBDW | |
| 200 (8") | 6 (20') | Solid | 08150020IBDW | 08650020IBDW |
| | | Perf | 08110020IBDW | |
| | | Sock | 08230020IBDW | |
| 250 (10") | 6 (20') | Solid | 10150020IBDW | 10650020IBDW |
| | | Perf | 10110020IBDW | |
| | | Sock | 10230020IBDW | |
| 300 (12") | 6 (20') | Solid | 12850020DW | 12650020DW |
| | | Perf | 12810020DW | |
| | | Sock | 12830020DW | |
| 375 (15") | 6 (20') | Solid | 15850020DW | 15650020DW |
| | | Perf | 15810020DW | |
| | | Sock | 15830020DW | |
| 450 (18") | 6 (20') | Solid | 18850020DW | 18650020DW |
| | | Perf | 18810020DW | |
| | | Sock | 18830020DW | |
| 600 (24") | 6 (20') | Solid | 24850020DW | 24650020DW |
| | | Perf | 24810020DW | |
| | | Sock | 24830020DW | |
| 750 (30") | 6 (20') | Solid | 30850020DW | 30650020DW |
| | | Perf | 30810020DW | |
| | | Sock | 30830020DW | |
| 900 (36") | 6 (20') | Solid | | 36650020DW |
| | | Perf | | 36610020DW |
| | | Sock | | 36630020DW |
| 1050 (42") | 6 (20') | Solid | | 42650020DW |
| | | Perf | | 42610020DW |
| 1200 (48") | 6 (20') | Solid | | 48650020DW |
| | | Perf | | 48310020DW |
| 1500 (60") | 6 (20') | Solid | | 60650020DW |
| | | Perf | | 60610020DW |



100-250 mm N-12 ST per ASTM



100-250 mm N-12 WT per ASTM



300-750 mm N-12 ST per ASTM

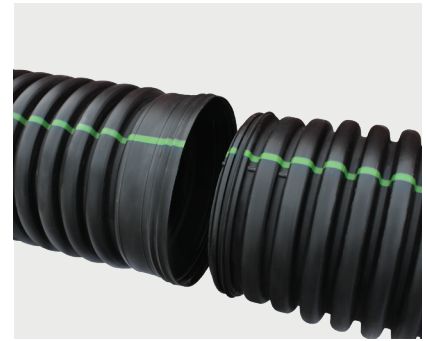


300-1500 mm N-12 WT per ASTM

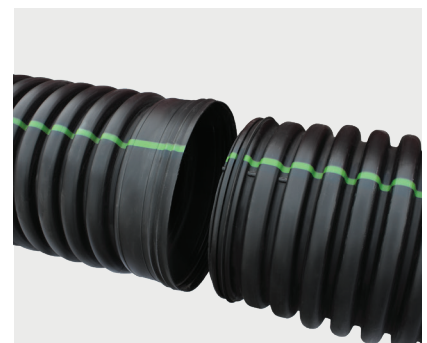
Dual Wall HDPE Pipe

100-1500 mm N-12 Mega Green ST & WT per ASTM F2648

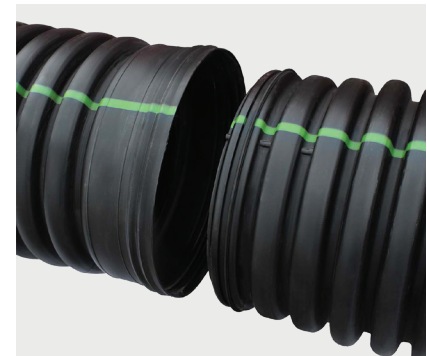
| Diameter mm (in) | Length m (ft) | Style | N-12 ST | N-12 WT |
|------------------|---------------|-------|--------------|--------------|
| 100 (4") | 6 (20') | Solid | 04150020IBDW | 04650020IBDW |
| | | Perf | 04110020IBDW | |
| | | Sock | 04230020IBDW | |
| 150 (6") | 6 (20') | Solid | 06150020IBDW | 06650020IBDW |
| | | Perf | 06110020IBDW | |
| | | Sock | 06230020IBDW | |
| 200 (8") | 6 (20') | Solid | 08150020IBDW | 08650020IBDW |
| | | Perf | 08110020IBDW | |
| | | Sock | 08230020IBDW | |
| 250 (10") | 6 (20') | Solid | 10150020IBDW | 10650020IBDW |
| | | Perf | 10110020IBDW | |
| | | Sock | 10230020IBDW | |
| 300 (12") | 6 (20') | Solid | 12850020DW | 12650020DW |
| | | Perf | 12810020DW | |
| | | Sock | 12830020DW | |
| 375 (15") | 6 (20') | Solid | 15850020DW | 15650020DW |
| | | Perf | 15810020DW | |
| | | Sock | 15830020DW | |
| 450 (18") | 6 (20') | Solid | 18850020DW | 18650020DW |
| | | Perf | 18810020DW | |
| | | Sock | 18830020DW | |
| 600 (24") | 6 (20') | Solid | 24850020DW | 24650020DW |
| | | Perf | 24810020DW | |
| | | Sock | 24830020DW | |
| 750 (30") | 6 (20') | Solid | 30850020DW | 30650020DW |
| | | Perf | 30810020DW | |
| | | Sock | 30830020DW | |
| 900 (36") | 6 (20') | Solid | | 36650020DW |
| | | Perf | | 36610020DW |
| | | Sock | | 36630020DW |
| 1050 (42") | 6 (20') | Solid | | 42650020DW |
| | | Perf | | 42610020DW |
| 1200 (48") | 6 (20') | Solid | | 48650020DW |
| | | Perf | | 48310020DW |
| 1500 (60") | 6 (20') | Solid | | 60650020DW |
| | | Perf | | 60610020DW |



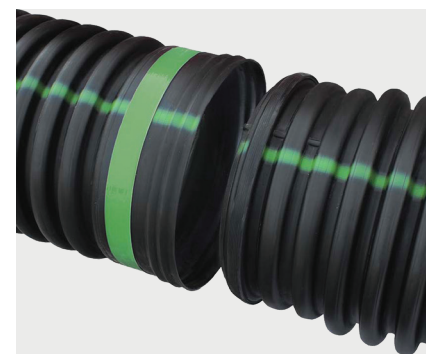
100-250 mm N-12 ST per ASTM



100-250 mm N-12 WT per ASTM



300-750 mm N-12 ST per ASTM



300-1500 mm N-12 WT per ASTM

Single Wall HDPE Pipe

| Product | Description | Diameter mm (in) | Length m (ft) | Connections | Specifications/ Performance mm (in) |
|------------------------|--|------------------|---|--|--|
| Heavy Duty Pipe | Annular corrugated single wall. | 100-375 (3"-12") | 15-1,143 (50'-3,750') coils depending on pipe diameter. 6 (20') sticks depending on diameter. | Internal, external snap or split couplers. | Meets ASTM F667. |
| Co-Ex | Annular corrugated with white exterior and black interior. | 100 (4") | 1,082 (3,550') | Internal, external snap or split couplers. | Meets ASTM F667. |
| ADS PolyFlex | Smooth exterior and interior polyethylene pressure pipe. | 13-50 (½"-2") | 100'-500' (30-152) | Internal and external couplers. | Meets ASTM D2239, AWWA C901 & NSF 14 & 61. |

Single Wall Pipe

100-250 mm Regular & Heavy Duty Single Wall

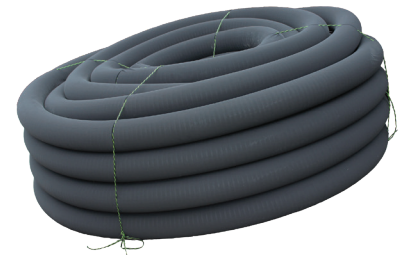
| Inside Diameter mm (in) | Standard Length m (ft) | Style | Regular | Heavy Duty |
|-------------------------|------------------------|-----------|------------|-------------|
| 100 (4") | 15 (50') | Solid | 04510050 | |
| | | Perf | 04010050 | |
| | 30 (100') | Solid | 04510100 | 04800100 |
| | | Perf | 04010100 | 04810100 |
| | | Perf/Wrap | 04730100BS | 04830100BS |
| | | Fine Slot | | 04090100 |
| | 45 (150') | Solid | 04510150 | |
| | | Perf | 04010150 | |
| | | Perf/Wrap | 04730150BS | |
| | 76 (250') | Solid | | 04800250 |
| | | Perf | | 04810250 |
| | | Perf/Wrap | | 04830250BS |
| Fine Slot | | | 04090250 | |
| Perf | | | 04813750 | |
| 1,143 (3,750') | Perf/Wrap | | 04833750BS | |
| | Fine Slot | | 04093750 | |
| 150 (6") | 30 (100') | Solid | | 06800100 |
| | | Perf | | 06810100 |
| | | Perf/Wrap | | 06830100BS |
| | 305 (1,000') | Solid | | 06801000 |
| | | Perf | | 06811000 |
| | | Perf/Wrap | | 06831000 |
| | | Fine Slot | | 06091000 |
| | 457 (1,500') | Solid | | 06801500 |
| | | Perf | | 06811500 |
| | | Perf/Wrap | | 06831500BS |
| | Fine Slot | | 06091500 | |
| 200 (8") | 6 (20') | Solid | | 08800020 |
| | | Perf | | 08810020 |
| | | Perf/Wrap | | 08830020BS |
| | | Fine Slot | | 08090020 |
| | 30 (100') | Solid | | 08800100 |
| | | Perf | | 08810100 |
| | | Perf/Wrap | | 08830100BS |
| | 122 (400') | Solid | | 08800400 |
| | | Per | | 088100400 |
| | | Perf/Wrap | | 08830400BS |
| | | Fine Slot | | 08090400 |
| | | Solid | | 08800820 |
| | 250 (820') | Perf | | 08810820 |
| | | Perf/Wrap | | 08830820BS |
| Fine Slot | | | 08090820 | |
| Solid | | | 10800020I | |
| 250 (10") | 6 (20') | Perf | | 10810020I |
| | | Solid | | 10800100I |
| | 30 (100') | Perf | | 10810100I |
| | | Perf/Wrap | | 10830100BSI |
| | | Solid | | 10800520I |
| | 160 (520') | Perf | | 10810520I |
| | | Perf/Wrap | | 10830520BSI |



Solid wall coil



Perforated wall coil



Perforated with sock coil



Solid stick

HDPE Pipe

Regular & Heavy Duty Single Wall, N-12 Flex Dual Wall & Tape

300 mm Regular & Heavy Duty Single Wall

| Inside Diameter mm (in) | Standard Length m (ft) | Style | Regular | Heavy Duty |
|-------------------------|------------------------|-----------|-------------|------------|
| 300 (12") | 6 (20') | Solid | 12510020I | |
| | | Perf | 12010020I | |
| | 30 (100') | Solid | 12510100I | |
| | | Perf | 12010100I | |
| | | Perf/Wrap | 12730100BSI | |
| | 100 (330') | Solid | 12510330I | |
| | | Perf | 12010330I | |
| | | Perf/Wrap | 12730330BSI | |
| | | Fine Slot | | 12090330I |

100-200 mm Co-Ex

| Inside Diameter mm (in) | Standard Length m (ft) | Style | Product Code |
|-------------------------|------------------------|-----------|--------------|
| 100 (4") | 1,082 (3,550') | Fine Slot | 04083550 |



N-12 Flex Dual Wall

| Diameter mm (in) | Length m (ft) | Style | Product Code |
|------------------|---------------|-----------|--------------|
| 200 (8") | 280 (920') | Solid | 08950920 |
| | 280 (920') | Perf | 08910920 |
| | 280 (920') | Fine Slot | 08890920 |
| 250 (10") | 168 (550') | Solid | 10950550 |
| | 168 (550') | Fine Slot | 10890550 |
| 300 (12") | 122 (400') | Solid | 12950400I |
| | 122 (400') | Perf | 12910400I |
| | 122 (400') | Fine Slot | 12890400I |
| 375 (15") | 61 (200') | Solid | 15950200I |
| | 61 (200') | Perf | 15910200I |
| | 61 (200') | Fine Slot | 15890200I |



Tape



| Description | Lengths m (ft) | Product Code |
|------------------------------|----------------|--------------|
| 50 mm (2") Black Tape Roll | 30.5 (100') | 1137KA |
| 12.5 (½) Black Filament Tape | 30.5 (100') | 1147KA |



Water Service Tubing

ADS PolyFlex Copper Tube Size (CTS)

SDR 9 1725 kPa (250 psi)* PE 4710 (Blue)

| Diameter mm (in) | Length m (ft) | Product Code |
|------------------|---------------|--------------|
| 19 (¾") | 30.5 (100') | X4-75250100 |
| | 61.0 (200') | X4-75250200 |
| | 91.4 (300') | X4-75250300 |
| | 152.4 (500') | X4-75250500 |
| | 304.8 (1000') | X4-752501000 |
| 25 (1") | 30.5 (100') | X4-1250100 |
| | 61.0 (200') | X4-1250200 |
| | 91.4 (300') | X4-1250300 |
| | 152.4 (500') | X4-1250500 |
| | 304.8 (1000') | X4-12501000 |
| 32 (1¼") | 30.5 (100') | X4-125250100 |
| | 61.0 (200') | X4-125250200 |
| | 91.4 (300') | X4-125250300 |
| | 152.4 (500') | X4-125250500 |
| 38 (1½") | 30.5 (100') | X4-150250100 |
| | 61.0 (200') | X4-150250200 |
| | 91.4 (300') | X4-150250300 |
| | 152.4 (500') | X4-150250500 |
| 50 (2") | 30.5 (100') | X4-2250100 |
| | 61.0 (200') | X4-2250200 |
| | 91.4 (300') | X4-2250300 |
| | 152.4 (500') | X4-2250500 |



SDR 9 1725 kPa (250 psi)* PE 4710 (Black)

| Diameter mm (in) | Length m (ft) | Product Code |
|------------------|---------------|---------------|
| 19 (¾") | 30.5 (100') | X4-75250100B |
| | 61.0 (200') | X4-75250200B |
| | 91.4 (300') | X4-75250300B |
| | 152.4 (500') | X4-75250500B |
| | 304.8 (1000') | X4-752501000B |
| 25 (1") | 30.5 (100') | X4-1250100B |
| | 61.0 (200') | X4-1250200B |
| | 91.4 (300') | X4-1250300B |
| | 152.4 (500') | X4-1250500B |
| | 304.8 (1000') | X4-12501000B |
| 32 (1¼") | 30.5 (100') | X4-125250100B |
| | 91.4 (300') | X4-125250300B |
| | 152.4 (500') | X4-125250500B |
| 38 (1½") | 30.5 (100') | X4-150250100B |
| | 61.0 (200') | X4-150250200B |
| | 91.4 (300') | X4-150250300B |
| | 165' (50.3) | X4-150250500B |
| 50 (2") | 30.5 (100') | X4-2250100B |
| | 61.0 (200') | X4-2250200B |
| | 91.4 (300') | X4-2250300B |
| | 152.4 (500') | X4-2250500B |



*Maximum allowable pressure at 22.7° C (73° F)

Potable Water Service Pipe

ADS PolyFlex SIDR IPS NSF Potable Grade

SIDR 9 1380 kPa (200 psi)* PE 4710

| Diameter mm (in) | Length m (ft) | Product Code |
|------------------|---------------|--------------|
| 19 (¾") | 30.5 (100') | X2-75200100 |
| | 300 (91.4) | X2-75200300 |
| | 121.9 (400') | X2-75200400 |
| | 152.4 (500') | X2-75200500 |
| 25 (1") | 30.5 (100') | X2-1200100 |
| | 91.4 (300') | X2-1200300 |
| | 152.4 (500') | X2-1200500 |
| | 600' (182.8) | X2-1200500 |
| 32 (1¼") | 30.5 (100') | X2-125200100 |
| | 91.4 (300') | X2-125200300 |
| 38 (1½") | 30.5 (100') | X2-150200100 |
| | 91.4 (300') | X2-150200300 |
| 50 (2") | 30.5 (100') | X2-2200100 |
| | 91.4 (300') | X2-2200300 |



SIDR 7 1725 kPa (250 psi)* PE 4710

| Diameter mm (in) | Length m (ft) | Product Code |
|------------------|---------------|--------------|
| 19 (¾") | 30.5 (100') | X2-75250100 |
| | 300 (91.4) | X2-75250300 |
| | 152.4 (500') | X2-75250500 |
| 25 (1") | 30.5 (100') | X2-1250100 |
| | 61.0 (200') | X2-1250200 |
| | 91.4 (300') | X2-1250300 |
| | 152.4 (500') | X2-1200500 |
| 32 (1¼") | 30.5 (100') | X2-125250100 |
| | 91.4 (300') | X2-125250300 |
| 38 (1½") | 30.5 (100') | X2-150250100 |
| | 91.4 (300') | X2-150250300 |
| 50 (2") | 30.5 (100') | X2-2250100 |
| | 91.4 (300') | X2-2250300 |

*Maximum allowable pressure at 22.7° C (73° F)

Water Service Pipe

ADS PolyFlex SIDR IPS Standard Grade

SIDR 19 690 kPa (100 psi)* PE 4710

| Diameter mm (in) | Length m (ft) | Product Code |
|------------------|---------------|--------------|
| 19 (¾") | 30.5 (100') | X2-75100100 |
| | 300 (91.4) | X2-75100300 |
| | 121.9 (400') | X2-75100400 |
| | 152.4 (500') | X2-75100500 |
| 25 (1") | 30.5 (100') | X2-1100100 |
| | 91.4 (300') | X2-1100300 |
| | 152.4 (500') | X2-1100500 |
| 32 (1¼") | 30.5 (100') | X2-125100100 |
| | 91.4 (300') | X2-125100300 |
| | 152.4 (500') | X2-125100500 |
| 38 (1½") | 30.5 (100') | X2-150100100 |
| | 91.4 (300') | X2-150100300 |
| 50 (2") | 30.5 (100') | X2-2100100 |
| | 91.4 (300') | X2-2100300 |



SIDR 15 860 kPa (125 psi)* PE 4710

| Diameter mm (in) | Length m (ft) | Product Code |
|------------------|---------------|--------------|
| 13 (½") | 30.5 (100') | X2-50125100 |
| | 91.4 (300') | X2-50125300 |
| | 121.9 (400') | X2-50125400 |
| 25 (1") | 30.5 (100') | X2-1125100 |
| | 91.4 (300') | X2-1125300 |

SIDR 11.5 1100 kPa (160 psi)* PE 4710

| Diameter mm (in) | Length m (ft) | Product Code |
|------------------|---------------|--------------|
| 19 (¾") | 30.5 (100') | X2-75160100 |
| | 300 (91.4) | X2-75160300 |
| | 121.9 (400') | X2-75160400 |
| | 152.4 (500') | X2-75160500 |
| 25 (1") | 30.5 (100') | X2-1160100 |
| | 61.0 (200') | X2-1160200 |
| | 91.4 (300') | X2-1160300 |
| | 152.4 (500') | X2-1160500 |
| 32 (1¼") | 30.5 (100') | X2-125160100 |
| | 91.4 (300') | X2-125160300 |
| | 152.4 (500') | X2-125160500 |
| 38 (1½") | 30.5 (100') | X2-150160100 |
| | 91.4 (300') | X2-150160300 |
| 50 (2") | 30.5 (100') | X2-2160100 |
| | 91.4 (300') | X2-2160300 |

*Maximum allowable pressure at 22.7° C (73° F)

Irrigation Service Pipe

ADS PolyFlex Utility Grade

550 kPa (80 psi) Non-Potable

| Diameter mm (in) | Length m (ft) | Product Code |
|------------------|---------------|--------------|
| 19 (¾") | 30.5 (100') | 7580100 |
| | 300 (91.4) | 7580300 |
| 25 (1") | 30.5 (100') | 180100 |
| | 91.4 (300') | 180300 |
| 32 (1¼") | 30.5 (100') | 12580100 |
| | 91.4 (300') | 12580300 |
| 38 (1½") | 30.5 (100') | 15080100 |
| | 91.4 (300') | 15080300 |
| 50 (2") | 30.5 (100') | 280100 |
| | 91.4 (300') | 280300 |



690 kPa (100 psi) Non-Potable

| Diameter mm (in) | Length m (ft) | Product Code |
|------------------|---------------|--------------|
| 19 (¾") | 30.5 (100') | 75100100 |
| | 300 (91.4) | 75100300 |
| 25 (1") | 30.5 (100') | 1100100 |
| | 91.4 (300') | 1100300 |
| 32 (1¼") | 30.5 (100') | 125100100 |
| | 91.4 (300') | 125100300 |
| 38 (1½") | 30.5 (100') | 150100100 |
| | 91.4 (300') | 150100300 |
| 50 (2") | 30.5 (100') | 2100100 |
| | 91.4 (300') | 2100300 |

860 kPa (125 psi) Non-Potable

| Diameter mm (in) | Length m (ft) | Product Code |
|------------------|---------------|--------------|
| 13 (½") | 30.5 (100') | 50125100 |
| | 91.4 (300') | 50125300 |

*Maximum allowable pressure at 22.7° C (73° F)

Dual Wall Fittings

Couplers

External Snap Coupler



| Diameter mm (in) | Product Code |
|------------------|--------------|
| 100 (4") | 0412AA |
| 150 (6") | 0613AA |
| 200 (8") | 0813AA |
| 250 (10") | 1013AA |

Plain End Double Coupler



| Diameter mm (in) | Product Code |
|------------------|--------------|
| 250 (10") | 1069AA |
| 300 (12") | 1269AA |
| 375 (15") | 1569AA |
| 450 (18") | 1869AA |
| 600 (24") | 2469AA |
| 750 (30") | 3069AA |
| 900 (36") | 3669AC |

Split Band Coupler



| Diameter mm (in) | Product Code |
|------------------|--------------|
| 250 (10") | 1011AA |
| 300 (12") | 1265AA |
| 375 (15") | 1565AA |
| 450 (18") | 1865AA |
| 600 (24") | 2465AA |
| 750 (30") | 3065AA |
| 900 (36") | 3661AA |
| 1050 (42") | 4265AA |
| 1200 (48") | 4865AA |
| 1500 (60") | 6065AA |

Bell-Bell Coupler



| Diameter mm (in) | Product Code | |
|------------------|--------------|----------|
| | N-12 ST | N-12 WT |
| 300 (12") | 1215AA | 1215AA |
| 375 (15") | 1515AA | 1515AA |
| 450 (18") | 1815AA | 1815AA |
| 600 (24") | 2415AA | 2415AA |
| 750 (30") | 3013AN65 | 3013AN65 |
| 900 (36") | 3613AN65 | 3613AN65 |
| 1050 (42") | 4213AN65 | 4213AN65 |
| 1200 (48") | 4813AN65 | 4813AN65 |
| 1500 (60") | 6013AN65 | 6013AN65 |

Dual Wall Fittings

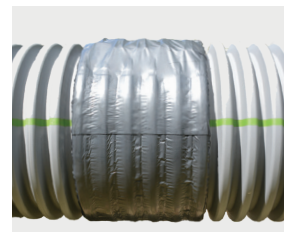
External Couplers & Internal Seals

Mar Mac® Coupler



| Diameter mm (in) | Product Code |
|------------------|--------------|
| 200 (8") | 0867RC |
| 250 (10") | 1067RC |
| 300 (12") | 1267RC |
| 375 (15") | 1567RC |
| 450 (18") | 1867RC |
| 600 (24") | 2467RC |
| 750 (30") | 3067RC |
| 900 (36") | 3667RC |
| 1050 (42") | 4267RC |
| 1200 (48") | 4867RC |
| 1500 (60") | 6067RC |

Mar Mac® Double Wide Coupler



| Diameter mm (in) | Product Code |
|------------------|--------------|
| 300 (12") | 1267RCD |
| 375 (15") | 1567RCD |
| 450 (18") | 1867RCD |
| 600 (24") | 2467RCD |
| 750 (30") | 3067RCD |
| 900 (36") | 3667RCD |
| 1050 (42") | 4267RCD |
| 1200 (48") | 4867RCD |
| 1500 (60") | 6067RCD |

PVC Repair Sleeve*



| Diameter mm (in) | Product Code |
|------------------|--------------|
| 100 (4") | 0475AG |
| 150 (6") | 0675AG |
| 200 (8") | 0875AG |
| 250 (10") | 1075AG |
| 300 (12") | 1275AG |
| 375 (15") | 1575AG |
| 450 (18") | 1875AG |
| 600 (24") | 2475AG |

*Typically, two repair sleeves, gaskets, lube and a piece of pipe are needed for post-installation pipe repair.

NOTE: Contact your local sales representative for field repair of 750-1500 mm (30"-60") diameter pipe and for availability of sizes not listed.

NPC Internal Joint Seal



| Diameter mm (in) | Width mm (in) | Product Code |
|------------------|---------------|--------------|
| 450 (18") | 266 (10.5") | 1892NS |
| 600 (24") | 190 (7.5") | 2491NS |
| | 266 (10.5") | 2492NS |
| 750 (30") | 190 (7.5") | 3091NS |
| | 266 (10.5") | 3092NS |
| 900 (36") | 190 (7.5") | 3691NS |
| | 266 (10.5") | 3692NS |
| 1050 (42") | 190 (7.5") | 4291NS |
| | 266 (10.5") | 4292NS |
| 1200 (48") | 190 (7.5") | 4891NS |
| | 266 (10.5") | 4892NS |
| 1500 (60") | 190 (7.5") | 6091NS |
| | 266 (10.5") | 6092NS |

Dual Wall Fittings

End Caps, End Plugs & Lubricants

End Caps*



| Diameter mm (in) | N-12 Plain End | N-12 WT Includes 1 gasket |
|------------------|----------------|---------------------------|
| 300 (12") | 1201AN | 1201AN65B |
| 375 (15") | 1501AN | 1501AN65B |
| 450 (18") | 1801AN | 1801AN65B |
| 600 (24") | 2401AN | 2401AN65B |
| 750 (30") | 3001AN | 3001AN65B |
| 900 (36") | 3601AN | 3601AN65B |
| 1050 (42") | 4201AN | 4201AN65B |
| 1200 (48") | 4801AN | 4801AN65B |
| 1500 (60") | 6001AN | 6001AN65B |

*End caps are for horizontal pipe applications only.

Non-Pressure Pipe End Plug with Gaskets*



| Diameter mm (in) | Product Code |
|------------------|--------------|
| 200 (8") | 0833AA |
| 250 (10") | 1033AA |
| 300 (12") | 1233AA |
| 375 (15") | 1533AA |
| 450 (18") | 1833AA |
| 600 (24") | 2433AA |
| 750 (30") | 3033AA |
| 900 (36") | 3633AA |
| 1050 (42") | 4233AA |
| 1200 (48") | 4833AA |
| 1500 (60") | 6033AA |

Snap End Caps**



| Diameter mm (in) | Product Code |
|------------------|--------------|
| 150 (6") | 0667AA |
| 200 (8") | 0867AA |
| 250 (10") | 1067AA |

** Not intended for permanent use or vertical orientation.
NOTE: Contact your local sales representative for availability of sizes not listed above.

N-12 Lubricants***



| Diameter mm (in) | Product Code 0200LU 1 quart (0.9 L) | Product Code 0800LU 1 gallon (3.8 L) |
|-----------------------------------|-------------------------------------|--------------------------------------|
| Typical Number of Joints Covered* | | |
| 100 (4") | 89 | 356 |
| 150 (6") | 61 | 244 |
| 200 (8") | 43 | 172 |
| 250 (10") | 33 | 132 |
| 300 (12") | 25 | 100 |
| 375 (15") | 20 | 80 |
| 450 (18") | 16 | 64 |
| 600 (24") | 10 | 40 |
| 750 (30") | 9 | 36 |
| 900 (36") | 7 | 28 |
| 1050 (42") | 6 | 24 |
| 1200 (48") | 6 | 24 |
| 1500 (60") | 5 | 20 |

**** Based on joints with single gasket. Pipe with dual gaskets will require 75% more lube to cover the same number of joints.

Dual Wall Fittings

Fabricated Reducers

Fabricated Reducers



PLAIN END REDUCER



N-12 WT REDUCER

| Diameter mm (in) | N-12 Plain End | N-12 WT Includes 2 gaskets |
|-----------------------|----------------|----------------------------|
| 150 x 100 (6" x 4") | 0670AN | |
| 200 x 100 (8" x 4") | 0870AN | |
| 200 x 150 (8" x 6") | 0871AN | |
| 250 x 100 (10" x 4") | 1070AN | |
| 250 x 150 (10" x 6") | 1071AN | |
| 250 x 200 (10" x 8") | 1072AN | |
| 300 x 100 (12" x 4") | 1270AN | 1270AN65B |
| 300 x 150 (12" x 6") | 1271AN | 1271AN65B |
| 300 x 200 (12" x 8") | 1272AN | 1272AN65B |
| 375 x 250 (12" x 10") | 1273AN | 1273AN65B |
| 375 x 100 (15" x 4") | 1570AN | 1570AN65B |
| 375 x 150 (15" x 6") | 1571AN | 1571AN65B |
| 375 x 200 (15" x 8") | 1572AN | 1572AN65B |
| 375 x 250 (15" x 10") | 1573AN | 1573AN65B |
| 375 x 300 (15" x 12") | 1574AN | 1574AN65B |
| 450 x 100 (18" x 4") | 1870AN | 1870AN65B |
| 450 x 150 (18" x 6") | 1871AN | 1871AN65B |
| 450 x 200 (18" x 8") | 1872AN | 1872AN65B |
| 450 x 250 (18" x 10") | 1873AN | 1873AN65B |
| 450 x 300 (18" x 12") | 1874AN | 1874AN65B |
| 450 x 375 (18" x 15") | 1875AN | 1875AN65B |
| 600 x 100 (24" x 4") | 2470AN | 2470AN65B |
| 600 x 150 (24" x 6") | 2471AN | 2471AN65B |
| 600 x 200 (24" x 8") | 2472AN | 2472AN65B |
| 600 x 250 (24" x 10") | 2473AN | 2473AN65B |
| 600 x 300 (24" x 12") | 2474AN | 2474AN65B |
| 600 x 375 (24" x 15") | 2475AN | 2474AN65B |
| 600 x 450 (24" x 18") | 2476AN | 2476AN65B |
| 750 x 100 (30" x 4") | 3070AN | 3070AN65B |
| 750 x 150 (30" x 6") | 3071AN | 3071AN65B |
| 750 x 200 (30" x 8") | 3072AN | 3072AN65B |
| 750 x 250 (30" x 10") | 3073AN | 3073AN65B |
| 750 x 300 (30" x 12") | 3074AN | 3074AN65B |
| 750 x 375 (30" x 15") | 3075AN | 3075AN65B |
| 750 x 450 (30" x 18") | 3076AN | 3076AN65B |
| 750 x 600 (30" x 24") | 3077AN | 3077AN65B |

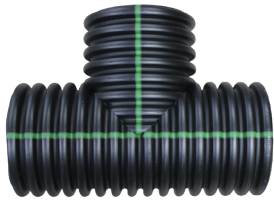
| Diameter mm (in) | N-12 Plain End | N-12 WT Includes 2 gaskets |
|-------------------------|----------------|----------------------------|
| 900 x 100 (36" x 4") | 3670AN | 3670AN65B |
| 900 x 150 (36" x 6") | 3671AN | 3671AN65B |
| 900 x 200 (36" x 8") | 3672AN | 3672AN65B |
| 900 x 250 (36" x 10") | 3673AN | 3673AN65B |
| 900 x 300 (36" x 12") | 3674AN | 3674AN65B |
| 900 x 375 (36" x 15") | 3675AN | 3675AN65B |
| 900 x 450 (36" x 18") | 3676AN | 3676AN65B |
| 900 x 600 (36" x 24") | 3677AN | 3677AN65B |
| 900 x 750 (36" x 30") | 3678AN | 3678AN65B |
| 1050 x 150 (42" x 6") | 4271AN | 4271AN65B |
| 1050 x 200 (42" x 8") | 4272AN | 4272AN65B |
| 1050 x 250 (42" x 10") | 4273AN | 4273AN65B |
| 1050 x 300 (42" x 12") | 4274AN | 4274AN65B |
| 1050 x 375 (42" x 15") | 4275AN | 4275AN65B |
| 1050 x 450 (42" x 18") | 4276AN | 4276AN65B |
| 1050 x 600 (42" x 24") | 4277AN | 4277AN65B |
| 1050 x 750 (42" x 30") | 4278AN | 4278AN65B |
| 1050 x 900 (42" x 36") | 4279AN | 4279AN65B |
| 1200 x 300 (48" x 12") | 4874AN | 4874AN65B |
| 1200 x 375 (48" x 15") | 4875AN | 4875AN65B |
| 1200 x 450 (48" x 18") | 4876AN | 4876AN65B |
| 1200 x 600 (48" x 24") | 4877AN | 4877AN65B |
| 1200 x 750 (48" x 30") | 4878AN | 4878AN65B |
| 1200 x 900 (48" x 36") | 4879AN | 4879AN65B |
| 1200 x 1050 (48" x 42") | 4842AN | 4842AN65B |
| 1500 x 600 (60" x 24") | 6077AN | 6077AN65B |
| 1500 x 750 (60" x 30") | 6078AN | 6078AN65B |
| 1500 x 900 (60" x 36") | 6079AN | 6079AN65B |
| 1500 x 1050 (60" x 42") | 6042AN | 6042AN65B |
| 1500 x 1200 (60" x 48") | 6048AN | 6048AN65B |

NOTE: Contact your local sales representative for availability or sizes not listed above.

Dual Wall Fittings

Fabricated Tees & Reducing Tees

Fabricated Tees



Plain End



N-12 WT

| Diameter mm (in) | N-12 Plain End | N-12 WT Includes 3 gaskets |
|------------------|----------------|-------------------------------|
| 300 (12") | 1264AN | 1264AN65B |
| 375 (15") | 1565AN | 1565AN65B |
| 450 (18") | 1866AN | 1866AN65B |
| 600 (24") | 2467AN | 2467AN65B |
| 750 (30") | 3068AN | 3068AN65B |
| 900 (36") | 3669AN | 3669AN65B |
| 1050 (42") | 4251AN | 4251AN65B |
| 1200 (48") | 4851AN | 4851AN65B |
| 1500 (60") | 6051AN | 6051AN65B |

Cross Tees



| Diameter mm (in) | N-12 Plain End |
|------------------|----------------|
| 100 (4") | 0430AN |
| 150 (6") | 0631AN |
| 200 (8") | 0832AN |
| 250 (10") | 1033AN |
| 300 (12") | 1234AN |
| 375 (15") | 1535AN |
| 450 (18") | 1836AN |
| 600 (24") | 2437AN |

Reducing Cross Tees



| Diameter mm (in) | N-12 Plain End |
|-----------------------|----------------|
| 150 x 100 (6" x 4") | 0630AN |
| 200 x 100 (8" x 4") | 0830AN |
| 200 x 150 (8" x 6") | 0831AN |
| 250 x 100 (10" x 4") | 1030AN |
| 250 x 150 (10" x 6") | 1031AN |
| 250 x 200 (10" x 8") | 1032AN |
| 300 x 100 (12" x 4") | 1230AN |
| 300 x 150 (12" x 6") | 1231AN |
| 300 x 200 (12" x 8") | 1232AN |
| 375 x 250 (12" x 10") | 1233AN |

Reducing Tap Tees



| Diameter mm (in) | N-12 WT Includes 2 gasket |
|----------------------|------------------------------|
| 150 x 100 (6" x 4") | 0660AN65BS |
| 200 x 100 (8" x 4") | 0860AN65BS |
| 250 x 150 (10" x 6") | 1061AN65BS |
| 300 x 100 (12" x 4") | 1260AN65BS |
| 300 x 150 (12" x 6") | 1261AN65BS |
| 450 x 100 (18" x 4") | 1860AN65BS |

Dual Wall Fittings

Fabricated Reducing Tees

Fabricated Reducing Tees



| Diameter mm (in) | N-12 Plain End | N-12 WT Includes 2 main and 1 stub gaskets |
|-----------------------|-------------------|--|
| 250 x 100 (10" x 4") | 1060AN | |
| 250 x 150 (10" x 6") | 1061AN | |
| 250 x 200 (10" x 8") | 1062AN | |
| 300 x 100 (12" x 4") | 1260AN | 1260AN65B |
| 300 x 150 (12" x 6") | 1261AN | 1261AN65B |
| 300 x 200 (12" x 8") | 1262AN | 1262AN65B |
| 300 x 250 (12" x 10") | 1263AN | 1263AN65B |
| 375 x 100 (15" x 4") | 1560AN | 1560AN65B |
| 375 x 150 (15" x 6") | 1561AN | 1561AN65B |
| 375 x 200 (15" x 8") | 1562AN | 1562AN65B |
| 375 x 250 (15" x 10") | 1563AN | 1563AN65B |
| 375 x 300 (15" x 12") | 1564AN | 1564AN65B |
| 450 x 100 (18" x 4") | 1860AN | 1860AN65B |
| 450 x 150 (18" x 6") | 1861AN | 1861AN65B |
| 450 x 200 (18" x 8") | 1862AN | 1862AN65B |
| 450 x 250 (18" x 10") | 1863AN | 1863AN65B |
| 450 x 300 (18" x 12") | 1864AN | 1864AN65B |
| 450 x 375 (18" x 15") | 1865AN | 1865AN65B |
| 600 x 100 (24" x 4") | 2460AN | 2460AN65B |
| 600 x 150 (24" x 6") | 2461AN | 2461AN65B |
| 600 x 200 (24" x 8") | 2462AN | 2462AN65B |
| 600 x 250 (24" x 10") | 2463AN | 2463AN65B |
| 600 x 300 (24" x 12") | 2464AN | 2464AN65B |
| 600 x 375 (24" x 15") | 2465AN | 2465AN65B |
| 600 x 450 (24" x 18") | 2466AN | 2466AN65B |
| 750 x 100 (30" x 4") | 3060AN | 3060AN65B |
| 750 x 150 (30" x 6") | 3061AN | 3061AN65B |
| 750 x 200 (30" x 8") | 3062AN | 3062AN65B |
| 750 x 250 (30" x 10") | 3063AN | 3063AN65B |
| 750 x 300 (30" x 12") | 3064AN | 3064AN65B |
| 750 x 375 (30" x 15") | 3065AN | 3065AN65B |
| 750 x 450 (30" x 18") | 3066AN | 3066AN65B |
| 750 x 600 (30" x 24") | 3067AN | 3067AN65B |
| 900 x 100 (36" x 4") | 3660AN | 3660AN65B |
| 900 x 150 (36" x 6") | 3661AN | 3661AN65B |
| 900 x 200 (36" x 8") | 3662AN | 3662AN65B |
| 900 x 250 (36" x 10") | 3663AN | 3663AN65B |

| Diameter mm (in) | N-12 Plain End | N-12 WT Includes 2 main and 1 stub gaskets |
|-------------------------|-------------------|--|
| 900 x 300 (36" x 12") | 3664AN | 3664AN65B |
| 900 x 375 (36" x 15") | 3665AN | 3665AN65B |
| 900 x 450 (36" x 18") | 3666AN | 3666AN65B |
| 900 x 600 (36" x 24") | 3667AN | 3667AN65B |
| 900 x 750 (36" x 30") | 3668AN | 3668AN65B |
| 1050 x 100 (42" x 4") | 4260AN | 4260AN65B |
| 1050 x 150 (42" x 6") | 4261AN | 4261AN65B |
| 1050 x 200 (42" x 8") | 4262AN | 4262AN65B |
| 1050 x 250 (42" x 10") | 4263AN | 4263AN65B |
| 1050 x 300 (42" x 12") | 4264AN | 4264AN65B |
| 1050 x 375 (42" x 15") | 4265AN | 4265AN65B |
| 1050 x 450 (42" x 18") | 4266AN | 4266AN65B |
| 1050 x 600 (42" x 24") | 4267AN | 4267AN65B |
| 1050 x 750 (42" x 30") | 4268AN | 4268AN65B |
| 1050 x 900 (42" x 36") | 4269AN | 4269AN65B |
| 1200 x 100 (48" x 4") | 4860AN | 4860AN65B |
| 1200 x 150 (48" x 6") | 4861AN | 4861AN65B |
| 1200 x 200 (48" x 8") | 4862AN | 4862AN65B |
| 1200 x 250 (48" x 10") | 4863AN | 4863AN65B |
| 1200 x 300 (48" x 12") | 4864AN | 4864AN65B |
| 1200 x 375 (48" x 15") | 4865AN | 4865AN65B |
| 1200 x 450 (48" x 18") | 4866AN | 4866AN65B |
| 1200 x 600 (48" x 24") | 4867AN | 4867AN65B |
| 1200 x 750 (48" x 30") | 4868AN | 4868AN65B |
| 1200 x 900 (48" x 36") | 4869AN | 4869AN65B |
| 1200 x 1050 (48" x 42") | 4840AN | 4840AN65B |
| 1500 x 100 (60" x 4") | 6060AN | 6060AN65B |
| 1500 x 150 (60" x 6") | 6061AN | 6061AN65B |
| 1500 x 200 (60" x 8") | 6062AN | 6062AN65B |
| 1500 x 250 (60" x 10") | 6063AN | 6063AN65B |
| 1500 x 300 (60" x 12") | 6064AN | 6064AN65B |
| 1500 x 375 (60" x 15") | 6065AN | 6065AN65B |
| 1500 x 450 (60" x 18") | 6066AN | 6066AN65B |
| 1500 x 600 (60" x 24") | 6067AN | 6067AN65B |
| 1500 x 750 (60" x 30") | 6068AN | 6068AN65B |
| 1500 x 900 (60" x 36") | 6069AN | 6069AN65B |
| 1500 x 1050 (60" x 42") | 6040AN | 6040AN65B |
| 1500 x 1200 (60" x 48") | 6041AN | 6041AN65B |

Dual Wall Fittings

Fabricated Bends

11.25° Bend



| Diameter mm (in) | N-12 Plain End | N-12 WT includes 2 gaskets |
|------------------|----------------|----------------------------|
| 100 (4") | 0491AN | |
| 150 (6") | 0691AN | |
| 200 (8") | 0891AN | |
| 250 (10") | 1091AN | |
| 300 (12") | 1291AN | 1291AN65B |
| 375 (15") | 1591AN | 1591AN65B |
| 450 (18") | 1891AN | 1891AN65B |
| 600 (24") | 2491AN | 2491AN65B |
| 750 (30") | 3091AN | 3091AN65B |
| 900 (36") | 3691AN | 3691AN65B |
| 1050 (42") | 4291AN | 4291AN65B |
| 1200 (48") | 4891AN | 4891AN65B |
| 1500 (60") | 6091AN | 6091AN65B |

30° Bend



| Diameter mm (in) | N-12 Plain End | N-12 WT includes 2 gaskets |
|------------------|----------------|----------------------------|
| 100 (4") | 0495AN | |
| 150 (6") | 0695AN | |
| 200 (8") | 0895AN | |
| 250 (10") | 1095AN | |
| 300 (12") | 1295AN | 1295AN65B |
| 375 (15") | 1595AN | 1595AN65B |
| 450 (18") | 1895AN | 1895AN65B |
| 600 (24") | 2495AN | 2495AN65B |
| 750 (30") | 3095AN | 3095AN65B |
| 900 (36") | 3695AN | 3695AN65B |
| 1050 (42") | 4295AN | 4295AN65B |
| 1200 (48") | 4895AN | 4895AN65B |
| 1500 (60") | 6095AN | 6095AN65B |

22.5° Bend



| Diameter mm (in) | N-12 Plain End | N-12 WT includes 2 gaskets |
|------------------|----------------|----------------------------|
| 100 (4") | 0492AN | |
| 150 (6") | 0692AN | |
| 200 (8") | 0892AN | |
| 250 (10") | 1092AN | |
| 300 (12") | 1292AN | 1292AN65B |
| 375 (15") | 1592AN | 1592AN65B |
| 450 (18") | 1892AN | 1892AN65B |
| 600 (24") | 2492AN | 2492AN65B |
| 750 (30") | 3092AN | 3092AN65B |
| 900 (36") | 3692AN | 3692AN65B |
| 1050 (42") | 4292AN | 4292AN65B |
| 1200 (48") | 4892AN | 4892AN65B |
| 1500 (60") | 6092AN | 6092AN65B |

45° Bend



| Diameter mm (in) | N-12 Plain End | N-12 WT includes 2 gaskets |
|------------------|----------------|----------------------------|
| 300 (12") | 1297AN | 1297AN65BB |
| 375 (15") | 1597AN | 1597AN65BB |
| 450 (18") | 1897AN | 1897AN65BB |
| 600 (24") | 2497AN | 2497AN65BB |
| 750 (30") | 3097AN | 3097AN65BB |
| 900 (36") | 3697AN | 3697AN65BB |
| 1050 (42") | 4297AN | 4297AN65BB |
| 1200 (48") | 4897AN | 4897AN65BB |
| 1500 (60") | 6097AN | 6097AN65BB |

Dual Wall Fittings

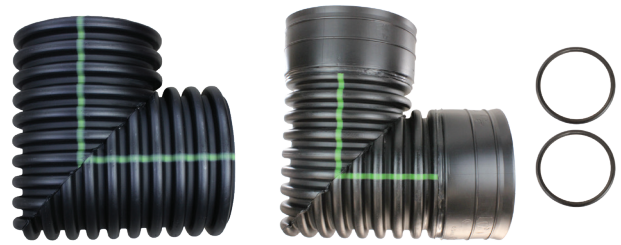
Fabricated Bends

45° Mitered Bend



| Diameter mm (in) | N-12 Plain End | N-12 WT includes 2 gaskets |
|---------------------|----------------|-------------------------------|
| 300 (12") | 1294AN | 1294AN65B |
| 375 (15") | 1594AN | 1594AN65B |
| 450 (18") | 1894AN | 1894AN65B |
| 600 (24") | 2494AN | 2494AN65B |
| 750 (30") | 3094AN | 3094AN65B |
| 900 (36") | 3694AN | 3694AN65B |
| 1050 (42") | 4294AN | 4294AN65B |
| 1200 (48") | 4894AN | 4894AN65B |
| 1500 (60") | 6094AN | 6094AN65B |

90° Bend

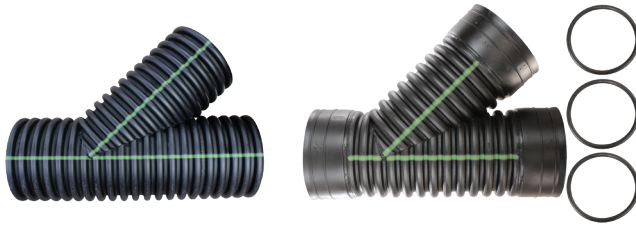


| Diameter mm (in) | N-12 Plain End | N-12 WT includes 2 gaskets |
|---------------------|----------------|-------------------------------|
| 100 (4") | 0499AN | |
| 150 (6") | 0699AN | |
| 200 (8") | 0899AN | |
| 250 (10") | 1099AN | |
| 300 (12") | 1299AN | 1299AN65B |
| 375 (15") | 1599AN | 1599AN65B |
| 450 (18") | 1899AN | 1899AN65B |
| 600 (24") | | 2499AN65B |

Dual Wall Fittings

Fabricated 45° Wyes

Fabricated 45° Wye



| Diameter mm (in) | N-12 Plain End | N-12 WT Includes 3 gaskets |
|------------------|----------------|----------------------------|
| 300 (12") | 1284AN | 1284AN65B |
| 375 (15") | 1585AN | 1585AN65B |
| 450 (18") | 1886AN | 1886AN65B |
| 600 (24") | 2487AN | 2487AN65B |

Fabricated Reducing 45° Wye



| Diameter mm (in) | N-12 Plain End | N-12 WT Includes 2 main and 1 stub gaskets |
|-----------------------|----------------|--|
| 250 x 100 (10" x 4") | 1080AN | |
| 250 x 150 (10" x 6") | 1081AN | |
| 250 x 200 (10" x 8") | 1082AN | |
| 300 x 100 (12" x 4") | 1280AN | 1280AN65B |
| 300 x 150 (12" x 6") | 1281AN | 1281AN65B |
| 300 x 200 (12" x 8") | 1282AN | 1282AN65B |
| 300 x 250 (12" x 10") | 1283AN | 1283AN65B |
| 375 x 100 (15" x 4") | 1580AN | 1580AN65B |
| 375 x 150 (15" x 6") | 1581AN | 1581AN65B |
| 375 x 200 (15" x 8") | 1582AN | 1582AN65B |
| 375 x 250 (15" x 10") | 1583AN | 1583AN65B |
| 375 x 300 (15" x 12") | 1584AN | 1584AN65B |
| 450 x 100 (18" x 4") | 1880AN | 1880AN65B |
| 450 x 150 (18" x 6") | 1881AN | 1881AN65B |
| 450 x 200 (18" x 8") | 1882AN | 1882AN65B |
| 450 x 250 (18" x 10") | 1883AN | 1883AN65B |
| 450 x 300 (18" x 12") | 1884AN | 1884AN65B |
| 450 x 375 (18" x 15") | 1885AN | 1885AN65B |

| Diameter mm (in) | N-12 Plain End | N-12 WT Includes 2 main and 1 stub gaskets |
|------------------------|----------------|--|
| 600 x 100 (24" x 4") | 2480AN | 2480AN65B |
| 600 x 150 (24" x 6") | 2481AN | 2481AN65B |
| 600 x 200 (24" x 8") | 2482AN | 2482AN65B |
| 600 x 250 (24" x 10") | 2483AN | 2483AN65B |
| 600 x 300 (24" x 12") | 2484AN | 2484AN65B |
| 600 x 375 (24" x 15") | 2485AN | 2485AN65B |
| 600 x 450 (24" x 18") | 2486AN | 2486AN65B |
| 750 x 100 (30" x 4") | 3080AN | 3080AN65B |
| 750 x 150 (30" x 6") | 3081AN | 3081AN65B |
| 750 x 200 (30" x 8") | 3082AN | 3082AN65B |
| 750 x 250 (30" x 10") | 3083AN | 3083AN65B |
| 750 x 300 (30" x 12") | 3084AN | 3084AN65B |
| 750 x 375 (30" x 15") | 3085AN | 3085AN65B |
| 900 x 100 (36" x 4") | | 3680AN65B |
| 900 x 150 (36" x 6") | 3681AN | 3681AN65B |
| 900 x 200 (36" x 8") | 3682AN | 3682AN65B |
| 900 x 250 (36" x 10") | 3683AN | 3683AN65B |
| 900 x 300 (36" x 12") | 3684AN | 3684AN65B |
| 900 x 375 (36" x 15") | 3685AN | 3685AN65B |
| 900 x 450 (36" x 18") | 3686AN | 3686AN65B |
| 1050 x 150 (42" x 6") | | 4281AN65B |
| 1050 x 200 (42" x 8") | 4282AN | 4282AN65B |
| 1050 x 250 (42" x 10") | | 4283AN65B |
| 1050 x 300 (42" x 12") | 4284AN | 4284AN65B |
| 1050 x 375 (42" x 15") | | 4285AN65B |
| 1050 x 450 (42" x 18") | 4286AN | 4286AN65B |
| 1200 x 150 (48" x 6") | | 4881AN65B |
| 1200 x 200 (48" x 8") | 4882AN | 4882AN65B |
| 1200 x 250 (48" x 10") | | 4883AN65B |
| 1200 x 300 (48" x 12") | 4884AN | 4884AN65B |
| 1200 x 375 (48" x 15") | 4885AN | 4885AN65B |
| 1200 x 450 (48" x 18") | 4886AN | 4886AN65B |
| 1200 x 600 (48" x 24") | 4887AN | 4887AN65B |
| 1500 x 200 (60" x 8") | 6082AN | 6082AN65B |
| 1500 x 250 (60" x 10") | 6083AN | 6083AN65B |
| 1500 x 300 (60" x 12") | 6084AN | 6084AN65B |
| 1500 x 375 (60" x 15") | 6085AN | 6085AN65B |
| 1500 x 450 (60" x 18") | 6086ANL | 6086AN65B |

NOTE: Contact your local sales representative for availability or sizes not listed above.

Dual Wall Injection Molded Fittings

Soil-Tight Fittings (Cleated Bells)

Bell/Bell Tee



| Diameter mm (in) | Package Qty. | Product Code |
|------------------|--------------|--------------|
| 100 (4") | 5 | 0460ST |
| 150 (6") | 3 | 0661ST |
| 200 (8") | 1 | 0862ST |
| 250 (10") | 1 | 1063ST |
| 300 (12") | 1 | 1264ST |

Bell/Bell 45° Wye



| Diameter mm (in) | Package Qty. | Product Code |
|------------------|--------------|--------------|
| 100 (4") | 5 | 0480ST |
| 150 (6") | 2 | 0681ST |
| 200 (8") | 1 | 0882ST |
| 250 (10") | 1 | 1083ST |
| 300 (12") | 1 | 1284ST |

Reducing Tee



| Diameter mm (in) | Package Qty. | Product Code |
|----------------------|--------------|--------------|
| 150 x 100 (6" x 4") | 5 | 0660ST |
| 250 x 200 (10" x 8") | 1 | 1062ST |
| 300 x 200 (12" x 8") | 1 | 1262ST |

45° Reducing Wye



| Diameter mm (in) | Package Qty. | Product Code |
|----------------------|--------------|--------------|
| 150 x 100 (6" x 4") | 2 | 0680ST |
| 200 x 100 (8" x 4") | 1 | 0880ST |
| 200 x 150 (8" x 6") | 1 | 0881ST |
| 250 x 200 (10" x 8") | 1 | 1082ST |

Sweeping Tee



| Diameter mm (in) | Package Qty. | Product Code |
|----------------------|--------------|--------------|
| 200 x 100 (8" x 4") | 1 | 0863ST |
| 200 x 150 (8" x 6") | 1 | 0836ST |
| 250 x 150 (10" x 6") | 1 | 1036ST |

Bell/Bell 90° Elbow



| Diameter mm (in) | Package Qty. | Product Code |
|------------------|--------------|--------------|
| 100 (4") | 10 | 0499ST |
| 150 (6") | 5 | 0699ST |
| 200 (8") | 3 | 0899ST |
| 250 (10") | 1 | 1099ST |
| 300 (12") | 1 | 1299ST |

Bell/Bell 45° Elbow



| Diameter mm (in) | Package Qty. | Product Code |
|------------------|--------------|--------------|
| 100 (4") | 15 | 0494ST |
| 150 (6") | 6 | 0694ST |
| 200 (8") | 3 | 0894ST |
| 250 (10") | 1 | 1094ST |
| 300 (12") | 1 | 1294ST |

Dual Wall Injection Molded Fittings

Watertight Fittings (includes F477 gaskets for attachment on pipe end)

Bell/Bell Tee



| Diameter mm (in) | Package Qty. | Product Code |
|------------------|--------------|--------------|
| 100 (4") | 5 | 0460WT |
| 150 (6") | 3 | 0661WT |
| 200 (8") | 1 | 0862WT |
| 250 (10") | 1 | 1063WT |
| 300 (12") | 1 | 1264WT |

Bell/Bell 45° Wye



| Diameter mm (in) | Package Qty. | Product Code |
|------------------|--------------|--------------|
| 100 (4") | 5 | 0480WT |
| 150 (6") | 2 | 0681WT |
| 200 (8") | 1 | 0882WT |
| 250 (10") | 1 | 1083WT |
| 300 (12") | 1 | 1284WT |

Reducing Tee



| Diameter mm (in) | Package Qty. | Product Code |
|----------------------|--------------|--------------|
| 150 x 100 (6" x 4") | 5 | 0660WT |
| 250 x 200 (10" x 8") | 1 | 1062WT |
| 300 x 200 (12" x 8") | 1 | 1262WT |

Reducing 45° Wye



| Diameter mm (in) | Package Qty. | Product Code |
|----------------------|--------------|--------------|
| 150 x 100 (6" x 4") | 2 | 0680WT |
| 200 x 100 (8" x 4") | 1 | 0880WT |
| 200 x 150 (8" x 6") | 1 | 0881WT |
| 250 x 200 (10" x 8") | 1 | 1082WT |
| 300 x 150 (12" x 6") | 1 | 1281WT |
| 300 x 200 (12" x 8") | 1 | 1282WT |

Sweeping Tee



| Diameter mm (in) | Package Qty. | Product Code |
|----------------------|--------------|--------------|
| 200 x 100 (8" x 4") | 1 | 0863WT |
| 200 x 150 (8" x 6") | 1 | 0836WT |
| 250 x 150 (10" x 6") | 1 | 1036WT |
| 300 x 150 (12" x 6") | 1 | 1236WT |

End Cap



| Diameter mm (in) | Package Qty. | Product Code |
|------------------|--------------|--------------|
| 100 (4") | 12 | 0432WT |
| 150 (6") | 1 | 0632WT |

Dual Wall Injection Molded Fittings

Watertight Fittings (includes F477 gaskets for attachment on pipe end)

Bell/Bell 45° Elbow



| Diameter mm (in) | Package Qty. | Product Code |
|------------------|--------------|--------------|
| 100 (4") | 15 | 0494WT |
| 150 (6") | 6 | 0694WT |
| 200 (8") | 3 | 0894WT |
| 250 (10") | 1 | 1094WT |
| 300 (12") | 1 | 1294WT |

Bell/Bell Coupler



| Diameter mm (in) | Package Qty. | Product Code |
|------------------|--------------|--------------|
| 100 (4") | 40 | 0413WT |
| 150 (6") | 10 | 0613WT |
| 200 (8") | 5 | 0813WT |
| 250 (10") | 5 | 1013WT |

Bell/Bell 90° Elbow



| Diameter mm (in) | Package Qty. | Product Code |
|------------------|--------------|--------------|
| 100 (4") | 15 | 0499WT |
| 150 (6") | 5 | 0699WT |
| 200 (8") | 3 | 0899WT |
| 250 (10") | 1 | 1099WT |
| 300 (12") | 1 | 1299WT |

Bell/Bell Reducing Coupler



| Diameter mm (in) | Package Qty. | Product Code |
|-----------------------|--------------|--------------|
| 150 x 100 (6" x 4") | 10 | 0614WT |
| 200 x 100 (8" x 4") | 10 | 0814WT |
| 200 x 150 (8" x 6") | 5 | 0816WT |
| 250 x 200 (10" x 8") | 1 | 1018WT |
| 300 x 200 (12" x 8") | 1 | 1218WT |
| 300 x 250 (12" x 10") | 1 | 1210WT |

Bell/Spigot Reducing Coupler



| Diameter mm (in) | Package Qty. | Product Code |
|---------------------|--------------|--------------|
| 150 x 100 (6" x 4") | 10 | 0674WT |
| 200 x 100 (8" x 4") | 10 | 0874WT |
| 200 x 150 (8" x 6") | 8 | 0876WT |

Dual Wall Injection Molded Fittings

ST & WT Reducing Fitting Kits

Soil Tight Tee

| Diameter mm (in) | Tee | Consists of Reducer | N-12 ST bell & spigot |
|-----------------------|-------------------|------------------------|--------------------------|
| 250 x 100 (10" x 4") | 1062ST (10" x 8") | + 0874WT (8" x 4") | 1060ST |
| 300 x 250 (12" x 10") | 1264ST (12") | + 1210WT (12" x 10") | 1263ST ^{1,2} |



Watertight Tee

| Diameter mm (in) | Tee | Consists of Reducer | N-12 ST bell & spigot |
|-----------------------|-------------------|------------------------|--------------------------|
| 200 x 150 (8" x 6") | 0862WT (8" x 6") | + 0876WT (8" x 6") | 0861WT |
| 250 x 100 (10" x 4") | 1062WT (10" x 8") | + 0874WT (8" x 4") | 1060WT |
| 300 x 100 (12" x 4") | 1264WT (12" x 8") | + 0874WT (8" x 4") | 1260WT |
| 300 x 250 (12" x 10") | 1264WT (12") | + 1210WT (12" x 10") | 1263WT ^{1,2} |



Soil Tight Wye

| Diameter mm (in) | Tee | Consists of Reducer | N-12 ST bell & spigot |
|-----------------------|---------------|------------------------|--------------------------|
| 300 x 250 (12" x 10") | 1284 ST (12") | + 1210WT (12" x 10") | 1283WT ³ |



Watertight Wye

| Diameter mm (in) | Tee | Consists of Reducer | N-12 ST bell & spigot |
|-----------------------|-------------------|------------------------|--------------------------|
| 250 x 100 (10" x 4") | 1082WT (10" x 8") | + 0874WT (8" x 4") | 1080WT |
| 250 x 150 (10" x 6") | 1082WT (10" x 8") | + 0876WT (8" x 6") | 1081WT |
| 300 x 100 (12" x 4") | 1282WT (12" x 8") | + 0874WT (8" x 4") | 1280WT |
| 300 x 250 (12" x 10") | 1284WT (12") | + 1210WT (12" x 10") | 1283WT ³ |



Watertight Reducer

| Diameter mm (in) | Tee | Consists of Reducer | N-12 ST bell & spigot |
|----------------------|-------------------|------------------------|--------------------------|
| 250 x 100 (10" x 4") | 1018WT (10" x 8") | + 0874WT (8" x 4") | 1074WT |
| 250 x 150 (10" x 6") | 1018WT (10" x 8") | + 0876WT (8" x 6") | 1076WT |
| 300 x 100 (12" x 4") | 1218WT (12" x 8") | + 0874WT (8" x 4") | 1274WT |
| 300 x 150 (12" x 6") | 1218WT (12" x 8") | + 1210WT (8" x 6") | 1276WT |



¹ Additional pipe stub not shipped with item number. Order this pipe separately.

² 12" x 10" Tee: order 1264 (WT or ST) 12" x 12" Tee, 1210WT 12" x 10" Bell/Bell Reducer, and approximately 15" of 12" diameter dual wall pipe to make the connection between the two bell ends.

³ 12" x 10" Wye: order 1284 (WT or ST) 12" x 12" Wye, 1210WT 12" x 10" Bell/Bell Reducer, and approximately 15" of 12" diameter dual wall pipe to make the connection between the two bell ends.

Nyloplast PVC Fittings

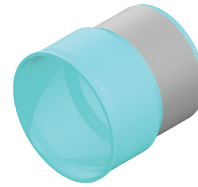
Watertight Fittings

SWR Spigot Adapter



| Diameter mm (in) | Product Code |
|------------------|--------------|
| 100 (4") | 0468AG |
| 150 (6") | 0668AG |
| 200 (8") | 0868AG |
| 250 (10") | 1068AG |
| 300 (12") | 1268AG |
| 375 (15") | 1568AG |
| 450 (18") | 1868AG |
| 600 (24") | 2468AG |

Sanded Manhole Adapters



| Diameter mm (in) | Product Code |
|------------------|--------------|
| 100 (4") | 0477AG |
| 150 (6") | 0677AG |
| 200 (8") | 0877AG |
| 250 (10") | 1077AG |
| 300 (12") | 1277AG |
| 375 (15") | 1577AG |
| 450 (18") | 1877AG |
| 600 (24") | 2477AG |

SWR Bell Adapter



| Diameter mm (in) | Product Code |
|------------------|--------------|
| 100 (4") | 0469AG |
| 150 (6") | 0669AG |
| 200 (8") | 0869AG |
| 250 (10") | 1069AG |
| 300 (12") | 1269AG |
| 375 (15") | 1569AG |
| 450 (18") | 1869AG |
| 600 (24") | 2469AG |

Unsanded Manhole Adapters



| Diameter mm (in) | Product Code |
|------------------|--------------|
| 100 (4") | 0477AGU |
| 150 (6") | 0677AGU |
| 200 (8") | 0877AGU |
| 250 (10") | 1077AGU |
| 300 (12") | 1277AGU |
| 375 (15") | 1577AGU |
| 450 (18") | 1877AGU |
| 600 (24") | 2477AGU |

Adapter with Sch 40 Spigot



| Diameter mm (in) | Product Code |
|------------------|--------------|
| 100 (4") | 0478AG |
| 150 (6") | 0678AG |
| 200 (8") | 0878AG |
| 250 (10") | 1078AG |
| 300 (12") | 1278AG |

Adapter with Sch 40 Bell

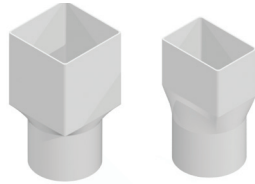


| Diameter mm (in) | Product Code |
|------------------|--------------|
| 100 (4") | 0479AG |
| 150 (6") | 0679AG |
| 200 (8") | 0879AG |
| 250 (10") | 1079AG |
| 300 (12") | 1279AG |

Nyloplast PVC Fittings

Watertight Fittings

Downspout Adapter



| Diameter mm (in) | Product Code |
|--------------------------------|--------------|
| 100 x 100 x 100 (4" x 4" x 4") | 0444FH |
| 100 x 150 x 150 (4" x 6" x 6") | 0466FH |
| 150 x 150 x 150 (6" x 6" x 6") | 0666FH |
| 150 x 150 x 200 (6" x 6" x 8") | 0668FH |
| 200 x 200 x 200 (8" x 8" x 8") | 0888FH |

N-12 Stop Coupling



| Diameter mm (in) | Product Code |
|------------------|--------------|
| 100 (4") | 0471AG |
| 150 (6") | 0671AG |
| 200 (8") | 0871AG |
| 250 (10") | 1071AG |
| 300 (12") | 1271AG |
| 375 (15") | 1571AG |
| 450 (18") | 1871AG |
| 600 (24") | 2471AG |

Repair Coupling



| Diameter mm (in) | Product Code |
|------------------|--------------|
| 100 (4") | 0475AG |
| 150 (6") | 0675AG |
| 200 (8") | 0875AG |
| 250 (10") | 1075AG |
| 300 (12") | 1275AG |
| 375 (15") | 1575AG |
| 450 (18") | 1875AG |
| 600 (24") | 2475AG |

End Cap



| Diameter mm (in) | Product Code |
|------------------|--------------|
| 100 (4") | 0432AG |
| 150 (6") | 0632AG |
| 200 (8") | 0832AG |
| 250 (10") | 1032AG |
| 300 (12") | 1232AG |
| 375 (15") | 1532AG |
| 450 (18") | 1832AG |
| 600 (24") | 2432AG |

Clean Out



| Diameter mm (in) | Product Code |
|------------------|--------------|
| 100 (4") | 0474AG |
| 150 (6") | 0674AG |
| 200 (8") | 0874AG |
| 250 (10") | 1074AG |
| 300 (12") | 1274AG |

Nyloplast PVC Fittings

Watertight Fittings

N-12 Bell x N-12 Bell Increaser



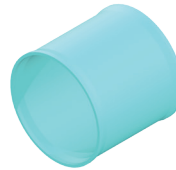
| Diameter mm (in) | Product Code |
|-----------------------|--------------|
| 150 x 100 (6" x 4") | 0611AG |
| 200 x 100 (8" x 4") | 0811AG |
| 200 x 150 (8" x 6") | 0812AG |
| 250 x 100 (10" x 4") | 1011AG |
| 250 x 150 (10" x 6") | 1012AG |
| 250 x 200 (10" x 8") | 1013AG |
| 300 x 100 (12" x 4") | 1211AG |
| 300 x 150 (12" x 6") | 1213AG |
| 375 x 100 (15" x 4") | 1511AG |
| 375 x 150 (15" x 6") | 1512AG |
| 375 x 200 (15" x 8") | 1513AG |
| 375 x 250 (15" x 10") | 1514AG |
| 375 x 300 (15" x 12") | 1515AG |
| 450 x 100 (18" x 4") | 1811AG |
| 450 x 150 (18" x 6") | 1812AG |
| 450 x 200 (18" x 8") | 1813AG |
| 450 x 250 (18" x 10") | 1814AG |
| 450 x 300 (18" x 12") | 1815AG |
| 450 x 375 (18" x 15") | 1816AG |
| 600 x 100 (24" x 4") | 2411AG |
| 600 x 150 (24" x 6") | 2412AG |
| 600 x 200 (24" x 8") | 2413AG |
| 600 x 250 (24" x 10") | 2414AG |
| 600 x 300 (24" x 12") | 2415AG |
| 600 x 375 (24" x 15") | 2416AG |
| 600 x 450 (24" x 18") | 2417AG |

HP Stop Coupler



| Diameter mm (in) | Product Code |
|------------------|--------------|
| 300 (12") | 1271AGHP |
| 375 (15") | 1571AGHP |
| 450 (18") | 1871AGHP |
| 525 (21") | 2171AGHP |
| 600 (24") | 2471AGHP |
| 750 (30") | 3071AGHP |
| 900 (36") | 3671AGHP |

HP Repair Coupler



| Diameter mm (in) | Product Code |
|------------------|--------------|
| 300 (12") | 1275AGHP |
| 375 (15") | 1575AGHP |
| 450 (18") | 1875AGHP |
| 525 (21") | 2175AGHP |
| 600 (24") | 2475AGHP |
| 750 (30") | 3075AGHP |

HP Bell x SWR Bell Adapter



| Diameter mm (in) | Product Code |
|-----------------------|--------------|
| 300 x 300 (12" x 12") | 1269AGHP |
| 375 x 375 (15" x 15") | 1569AGHP |
| 450 x 450 (18" x 18") | 1869AGHP |

Nyloplast PVC Fittings

Watertight Fittings

HP Bell x SWR Spigot Adapter*



| Diameter mm (in) | Product Code |
|-----------------------|--------------|
| 300 x 300 (12" x 12") | 1268AGHP |
| 375 x 375 (15" x 15") | 1568AGHP |
| 450 x 450 (18" x 18") | 1868AGHP |
| 600 x 600 (24" x 24") | 2468AGHP |

HP Unsanded Manhole Adapter**



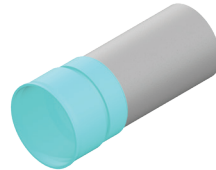
| Diameter mm (in) | Product Code |
|------------------|--------------|
| 300 (12") | 1257AGHPU2 |
| 375 (15") | 1557AGHPU2 |
| 450 (18") | 1857AGHPU2 |
| 600 (24") | 2457AGHPU2 |

HP End Cap



| Diameter mm (in) | Product Code |
|------------------|--------------|
| 300 (12") | 1232AGHP |
| 375 (15") | 1532AGHP |
| 450 (18") | 1832AGHP |
| 600 (24") | 2432AGHP |
| 750 (30") | 3032AGHP |

HP Sanded Manhole Adapter**



| Diameter mm (in) | Product Code |
|------------------|--------------|
| 300 (12") | 1257AGHP2 |
| 375 (15") | 1557AGHP2 |
| 450 (18") | 1857AGHP2 |
| 600 (24") | 2457AGHP2 |

* For pipe connection only

**Two piece construction for steeper shoulder. Longer spigot length 24" (600 mm) fitting specifically for manhole connections

Inserta Tee Fittings*

N-12

N-12 into any Mainline Pipe**

| Diameter mm (in) | Product Code |
|-----------------------------|--------------|
| 100 into 150 (4" into 6") | 4N126N12 |
| 100 into 200 (4" into 8") | 4N128N12 |
| 100 into 250 (4" into 10") | 4N1210-12FIT |
| 100 into 300 (4" into 12") | 4N1210-12FIT |
| 100 into 375 (4" into 15") | 4N1215+FIT |
| 100 into 450 (4" into 18") | 4N1215+FIT |
| 100 into 600 (4" into 24") | 4N1215+FIT |
| 100 into 750 (4" into 30") | 4N1215+FIT |
| 100 into 900 (4" into 36") | 4N1215+FIT |
| 100 into 1050 (4" into 42") | 4N1215+FIT |
| 100 into 1200 (4" into 48") | 4N1215+FIT |
| 100 into 1500 (4" into 60") | 4N1215+FIT |
| 150 into 200 (6" into 8") | 6N128N12 |
| 150 into 250 (6" into 10") | 6N1210-12FIT |
| 150 into 300 (6" into 12") | 6N1210-12FIT |
| 150 into 375 (6" into 15") | 6N1215+FIT |
| 150 into 450 (6" into 18") | 6N1215+FIT |
| 150 into 600 (6" into 24") | 6N1215+FIT |
| 150 into 750 (6" into 30") | 6N1215+FIT |
| 150 into 900 (6" into 36") | 6N1215+FIT |
| 150 into 1050 (6" into 42") | 6N1215+FIT |
| 150 into 1200 (6" into 48") | 6N1215+FIT |
| 150 into 1500 (6" into 60") | 6N1215+FIT |
| 200 into 300 (8" into 12") | 8N1212-15FIT |
| 200 into 375 (8" into 15") | 8N1212-15FIT |
| 200 into 450 (8" into 18") | 8N1218+FIT |
| 200 into 450 (8" into 24") | 8N1218+FIT |
| 200 into 450 (8" into 30") | 8N1218+FIT |
| 200 into 450 (8" into 36") | 8N1218+FIT |
| 200 into 450 (8" into 42") | 8N1218+FIT |
| 200 into 450 (8" into 48") | 8N1218+FIT |
| 200 into 450 (8" into 60") | 8N1218+FIT |

N-12 into N-12

| Diameter mm (in) | Product Code |
|------------------------------|-----------------|
| 250 into 375 (10" into 15") | 10N1215N12 |
| 250 into 450 (10" into 18") | 10N12MF18-24N12 |
| 250 into 600 (10" into 24") | 10N12MF18-24N12 |
| 250 into 750 (10" into 30") | 10N12MF30-60N12 |
| 250 into 900 (10" into 36") | 10N12MF30-60N12 |
| 250 into 1050 (10" into 42") | 10N12MF30-60N12 |
| 250 into 1200 (10" into 48") | 10N12MF30-60N12 |
| 250 into 1500 (10" into 60") | 10N12MF30-60N12 |
| 300 into 450 (12" into 18") | 12N12MF18-24N12 |
| 300 into 600 (12" into 24") | 12N12MF18-24N12 |
| 300 into 750 (12" into 30") | 12N12MF30-60N12 |
| 300 into 900 (12" into 36") | 12N12MF30-60N12 |
| 300 into 1050 (12" into 42") | 12N12MF30-60N12 |
| 300 into 1200 (12" into 48") | 12N12MF30-60N12 |
| 300 into 1500 (12" into 60") | 12N12MF30-60N12 |
| 375 into 600 (15" into 24") | 15N12MF24-60N12 |
| 375 into 750 (15" into 30") | 15N12MF24-60N12 |
| 375 into 900 (15" into 36") | 15N12MF24-60N12 |
| 375 into 1050 (15" into 42") | 15N12MF24-60N12 |
| 375 into 1200 (15" into 48") | 15N12MF24-60N12 |
| 375 into 1500 (15" into 60") | 15N12MF24-60N12 |
| 450 into 750 (18" into 30") | 18N12MF30-60N12 |
| 450 into 900 (18" into 36") | 18N12MF30-60N12 |
| 450 into 1050 (18" into 42") | 18N12MF30-60N12 |
| 450 into 1200 (18" into 48") | 18N12MF30-60N12 |
| 450 into 1500 (18" into 60") | 18N12MF30-60N12 |
| 600 into 900 (24" into 36") | 24N12MF36-60N12 |
| 600 into 1050 (24" into 42") | 24N12MF36-60N12 |
| 600 into 1200 (24" into 48") | 24N12MF36-60N12 |
| 600 into 1500 (24" into 60") | 24N12MF36-60N12 |

** Parts with FIT in name indicate Inserta Tee OneFit. These parts can fit any mainline type.



* Inserta Tee can be used in storm and sanitary sewer applications and can fit ANY mainline pipe type. Contact your ADS representative for assistance with part configurations for: Concrete, Clay, CMP, PVC, Fiberglass, CIPP, DIP, StormTech, Nyloplast structures, etc.

Inserta Tee Fittings*

SDR26/35

SDR26/35 into any Mainline Pipe**

| Diameter mm (in) | Product Code |
|-----------------------------|--------------|
| 100 into 150 (4" into 6") | 4P26FB6N12 |
| 100 into 200 (4" into 8") | 4P26FB8N12 |
| 100 into 250 (4" into 10") | 4P2610-12FIT |
| 100 into 300 (4" into 12") | 4P2610-12FIT |
| 100 into 375 (94" into 15") | 4P2615+FIT |
| 100 into 450 (4" into 18") | 4P2615+FIT |
| 100 into 600 (4" into 24") | 4P2615+FIT |
| 100 into 750 (4" into 30") | 4P2615+FIT |
| 100 into 900 (4" into 36") | 4P2615+FIT |
| 100 into 1050 (4" into 42") | 4P2615+FIT |
| 100 into 1200 (4" into 48") | 4P2615+FIT |
| 100 into 1500 (4" into 60") | 4P2615+FIT |
| 150- into 200 (6" into 8") | 6P26FB8N12 |
| 150 into 250 (6" into 10") | 6P2610-12FIT |
| 150 into 300 (6" into 12") | 6P2610-12FIT |
| 150 into 375 (6" into 15") | 6P2615+FIT |
| 150 into 450 (6" into 18") | 6P2615+FIT |
| 150 into 600 (6" into 24") | 6P2615+FIT |
| 150 into 750 (6" into 30") | 6P2615+FIT |
| 150 into 900 (6" into 36") | 6P2615+FIT |
| 150 into 1050 (6" into 42") | 6P2615+FIT |
| 150 into 1200 (6" into 48") | 6P2615+FIT |
| 150 into 1500 (6" into 60") | 6P2615+FIT |

**SDR26 PVC Hub Options are Available from 100-375 mm (4"-15")

SDR35 into N-12

| Diameter mm (in) | Product Code |
|------------------------------|-----------------|
| 250 into 375 (10" into 15") | 10P3515N12 |
| 250 into 450 (10" into 18") | 10P35MF18-24N12 |
| 250 into 600 (10" into 24") | 10P35MF18-24N12 |
| 250 into 750 (10" into 30") | 10P35MF30-60N12 |
| 250 into 900 (10" into 36") | 10P35MF30-60N12 |
| 250 into 1050 (10" into 42") | 10P35MF30-60N12 |
| 250 into 1200 (10" into 48") | 10P35MF30-60N12 |
| 250 into 1500 (10" into 60") | 10P35MF30-60N12 |
| 300 into 450 (12" into 18") | 12P35MF18-24N12 |
| 300 into 600 (12" into 24") | 12P35MF18-24N12 |
| 300 into 750 (12" into 30") | 12P35MF30-60N12 |
| 300 into 900 (12" into 36") | 12P35MF30-60N12 |
| 300 into 1050 (12" into 42") | 12P35MF30-60N12 |
| 300 into 1200 (12" into 48") | 12P35MF30-60N12 |
| 300 into 1500 (12" into 60") | 12P35MF30-60N12 |
| 375 into 600 (15" into 24") | 15P35MF24-60N12 |
| 375 into 750 (15" into 30") | 15P35MF24-60N12 |
| 375 into 900 (15" into 36") | 15P35MF24-60N12 |
| 375 into 1050 (15" into 42") | 15P35MF24-60N12 |
| 375 into 1200 (15" into 48") | 15P35MF24-60N12 |
| 375 into 1500 (15" into 60") | 15P35MF24-60N12 |
| 450 into 750 (18" into 30") | 18P35MF30-60N12 |
| 450 into 900 (18" into 36") | 18P35MF30-60N12 |
| 450 into 1050 (18" into 42") | 18P35MF30-60N12 |
| 450 into 1200 (18" into 48") | 18P35MF30-60N12 |
| 450 into 1500 (18" into 60") | 18P35MF30-60N12 |

SDR35 into any Mainline Pipe

| Diameter mm (in) | Product Code |
|----------------------------|--------------|
| 200 into 300 (8" into 12") | 8P3512-15FIT |
| 200 into 375 (8" into 15") | 8P3512-15FIT |
| 200 into 450 (8" into 18") | 8P3518+FIT |
| 200 into 450 (8" into 24") | 8P3518+FIT |
| 200 into 450 (8" into 30") | 8P3518+FIT |
| 200 into 450 (8" into 36") | 8P3518+FIT |
| 200 into 450 (8" into 42") | 8P3518+FIT |
| 200 into 450 (8" into 48") | 8P3518+FIT |
| 200 into 450 (8" into 60") | 8P3518+FIT |

* Inserta Tee can be used in storm and sanitary sewer applications and can fit ANY mainline pipe type.

** SDR35 PVC is typical for storm applications. SDR26 PVC is typical for sanitary applications. For assistance with 200-375 mm (8"-15") SDR26 PVC applications please contact your ADS sales representative for more information.

Inserta Tee Fittings*

IPS/SCH40 PVC

IPS/SCH40 into any Mainline Pipe

| Diameter mm (in) | Product Code |
|-----------------------------|--------------|
| 100 into 150 (4" into 6") | 4IPS6N12 |
| 100 into 200 (4" into 8") | 4IPS8N12 |
| 100 into 250 (4" into 10") | 4IPS10-12FIT |
| 100 into 300 (4" into 12") | 4IPS10-12FIT |
| 100 into 375 (4" into 15") | 4IPS15+FIT |
| 100 into 450 (4" into 18") | 4IPS15+FIT |
| 100 into 600 (4" into 24") | 4IPS15+FIT |
| 100 into 750 (4" into 30") | 4IPS15+FIT |
| 100 into 900 (4" into 36") | 4IPS15+FIT |
| 100 into 1050 (4" into 42") | 4IPS15+FIT |
| 100 into 1200 (4" into 48") | 4IPS15+FIT |
| 100 into 1500 (4" into 60") | 4IPS15+FIT |
| 150 into 200 (6" into 8") | 6IPS8N12 |
| 150 into 250 (6" into 10") | 6IPS10-12FIT |
| 150 into 300 (6" into 12") | 6IPS10-12FIT |
| 150 into 375 (6" into 15") | 6IPS15+FIT |
| 150 into 450 (6" into 18") | 6IPS15+FIT |
| 150 into 600 (6" into 24") | 6IPS15+FIT |
| 150 into 750 (6" into 30") | 6IPS15+FIT |
| 150 into 900 (6" into 36") | 6IPS15+FIT |
| 150 into 1050 (6" into 42") | 6IPS15+FIT |
| 150 into 1200 (6" into 48") | 6IPS15+FIT |
| 150 into 1500 (6" into 60") | 6IPS15+FIT |
| 200 into 300 (8" into 12") | 8IPS12-15FIT |
| 200 into 375 (8" into 15") | 8IPS12-15FIT |
| 200 into 450 (8" into 18") | 8IPS18+FIT |
| 200 into 450 (8" into 24") | 8IPS18+FIT |
| 200 into 450 (8" into 30") | 8IPS18+FIT |
| 200 into 450 (8" into 36") | 8IPS18+FIT |
| 200 into 450 (8" into 42") | 8IPS18+FIT |
| 200 into 450 (8" into 48") | 8IPS18+FIT |
| 200 into 450 (8" into 60") | 8IPS18+FIT |

IPS/SCH40 into N-12

| Diameter mm (in) | Product Code |
|------------------------------|-----------------|
| 250 into 375 (10" into 15") | 10IPS15N12 |
| 250 into 450 (10" into 18") | 10IPSMF18-24N12 |
| 250 into 600 (10" into 24") | 10IPSMF18-24N12 |
| 250 into 750 (10" into 30") | 10IPSMF30-60N12 |
| 250 into 900 (10" into 36") | 10IPSMF30-60N12 |
| 250 into 1050 (10" into 42") | 10IPSMF30-60N12 |
| 250 into 1200 (10" into 48") | 10IPSMF30-60N12 |
| 250 into 1500 (10" into 60") | 10IPSMF30-60N12 |
| 300 into 450 (12" into 18") | 12IPSMF18-24N12 |
| 300 into 600 (12" into 24") | 12IPSMF18-24N12 |
| 300 into 750 (12" into 30") | 12IPSMF30-60N12 |
| 300 into 900 (12" into 36") | 12IPSMF30-60N12 |
| 300 into 1050 (12" into 42") | 12IPSMF30-60N12 |
| 300 into 1200 (12" into 48") | 12IPSMF30-60N12 |
| 300 into 1500 (12" into 60") | 12IPSMF30-60N12 |

C900/Ductile Iron Hub Options are Available from 100-300 mm (4"-12").

* Inserta Tee can be used in storm and sanitary sewer applications and can fit ANY mainline pipe type. Contact your ADS representative for assistance with part configurations for: Concrete, Clay, CMP, PVC, Fiberglass, CIPP, DIP, StormTech, Nyloplast structures, etc.

Inserta Tee

Hole Saws for Coring into Plastic Pipe*

Red Series for All Plastic Mainlines



| Size mm (in) | Pilot Drill | Weight kg (pounds) | Product Code |
|--------------|--------------|--------------------|--------------|
| 114 (4½") | 12 mm (0.5") | 1.4 (3) | R412SAW |
| 165 (6½") | 12 mm (0.5") | 1.8 (4) | R612SAW |
| 222 (8¾") | 12 mm (0.5") | 2.7 (6) | R834SAW |

Blue Series for All Plastic Mainlines



| Size mm (in) | Pilot Drill | Weight kg (pounds) | Product Code |
|--|--------------|--------------------|--------------|
| 67 (2⅝") | 12 mm (0.5") | 0.9 (2) | BL258SAW |
| 95 (3¾") | 12 mm (0.5") | 1.4 (3) | BL334SAW |
| 114 (4½") | 12 mm (0.5") | 1.4 (3) | BL412SAW |
| 165 (6½") | 12 mm (0.5") | 1.8 (4) | BL612SAW |
| 222 (8¾") | 12 mm (0.5") | 2.7 (6) | BL834SAW |
| 276 (10⅞") | 19 mm (¾") | 5.4 (12) | BL1078SAW |
| 327 (12⅞") | 19 mm (¾") | 6.8 (15) | BL1278SAW |
| 402 (15 ¹³ / ₁₆ ") | 19 mm (¾") | 9.5 (21) | BL151316SAW |
| 487 (19 ³ / ₁₆ ") | 19 mm (¾") | 15.9 (35) | BL19316SAW |
| 643 (25 ⁵ / ₁₆ ") | 19 mm (¾") | 20.4 (45) | BL25516SAW |

Grey Series (Carbide Tipped) for Solid Wall HDPE Mainlines



| Size mm (in) | Pilot Drill | Weight kg (pounds) | Product Code |
|--------------|-------------|--------------------|--------------|
| 114 (4½") | 19 mm (¾") | 2.7 (6) | PE412SAW |
| 165 (6½") | 19 mm (¾") | 4.0 (9) | PE612SAW |
| 222 (8¾") | 19 mm (¾") | 4.0 (9) | PE834SAW |

Orange Series (for SaniTite HP Mainlines)*



| Size mm (in) | Pilot Drill | Weight kg (pounds) | Product Code |
|---|--------------|--------------------|--------------|
| 4⅜" | 12 mm (0.5") | 1.4 (3) | HP438SAW |
| 6⅜" | 12 mm (0.5") | 1.8 (4) | HP638SAW |
| 8⅝" | 12 mm (0.5") | 2.7 (6) | HP858SAW |
| 276 (10¾") | 19 mm (¾") | 5.4 (12) | HP1034SAW |
| 327 (12¾") | 19 mm (¾") | 6.8 (15) | HP1234SAW |
| 402 (15¾") | 19 mm (¾") | 9.5 (21) | HP1534SAW |
| 487 (19 ¹ / ₁₆ ") | 19 mm (¾") | 15.9 (35) | HP19116SAW |

* For air-testable application only

* When quoting hole saws, a ratio of one (1) saw for every 25 cuts is recommended.

Inserta Tee

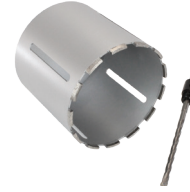
*Wet Diamond Bit Hole Saw for Coring Non-Plastic Pipe**

Gold Series (Use with Heavy Duty ½" Drill Motor)



| Size mm (in) | Pilot Drill | Weight kg (pounds) | Product Code |
|--------------|-------------|--------------------|--------------|
| 67 (2⅝") | 19 mm (¾") | 1.4 (3) | GA258BIT |
| 95 (3¾") | 19 mm (¾") | 4.5 (10) | GA334BIT |
| 114 (4½") | 19 mm (¾") | 5.4 (12) | GA412BIT |
| 165 (6½") | 19 mm (¾") | 8.1 (18) | GA612BIT |
| 222 (8¾") | 19 mm (¾") | 10.9 (24) | GA834BIT |
| 276 (10⅞") | 19 mm (¾") | 15.0 (33) | GA1078BIT |

Silver Series (Use with Heavy Duty ½" Drill Motor)



| Size mm (in) | Pilot Drill | Weight kg (pounds) | Product Code |
|--------------|--------------|--------------------|--------------|
| 114 (4½") | 10 mm (0.4") | 1.8 (4) | S412BIT |
| 165 (6½") | 10 mm (0.4") | 3.6 (8) | S612BIT |
| 222 (8¾") | 10 mm (0.4") | 5.9 (13) | S834BIT |

Gold Series (Use with Coring Machine)**



| Size mm (in) | Pilot Drill | Weight kg (pounds) | Product Code |
|--|-------------|--------------------|--------------|
| 114 (4½") | 19 mm (¾") | 4.0 (9) | G412BIT |
| 165 (6½") | 19 mm (¾") | 6.8 (15) | G612BIT |
| 222 (8¾") | 19 mm (¾") | 9.5 (21) | G834BIT |
| 276 (10⅞") | 19 mm (¾") | 13.6 (30) | G1078BIT |
| 327 (12⅞") | 19 mm (¾") | 18.6 (41) | G1278BIT |
| 402 (15 ¹³ / ₁₆ ") | 19 mm (¾") | 26.8 (59) | G151316BIT |
| 487 (19 ³ / ₁₆ ") | 19 mm (¾") | 28.1 (62) | G19316BIT |
| 643 (25 ⁵ / ₁₆ ") | 19 mm (¾") | 29.5 (65) | G25516BIT |

** Hole saws for coring machines are equipped with a 31.75 mm (1¼") x 7 (thread) female adapter nut.

* When quoting hole saws, a ratio of one (1) saw for every 10 cuts is recommended.

Singlewall Fittings

Couplers

Internal Coupler



0315AA, 0417AA, 0615AA 0517AA, 0815AA, 1015AA

| Diameter mm (in) | Package Qty. | Product Code |
|------------------|--------------|--------------|
| 75 (3") | 50 | 0315AA |
| 100 (4") | 16 | 0417AA |
| 125 (5") | 12 | 0517AA |
| 150 (6") | 9 | 0615AA |
| 200 (8") | 4 | 0815AA |
| 250 (10") | 4 | 1015AA |

Internal Reducing Coupler



| Diameter mm (in) | Package Qty. | Product Code |
|---------------------|--------------|--------------|
| 125 x 100 (5" x 4") | 16 | 0425AA |
| 150 x 125 (6" x 5") | 9 | 0526AA |

Snap Reducing Coupler



| Diameter-Main x Stub mm (in) | Package Qty. | Product Code |
|------------------------------|--------------|--------------|
| 100 x 75 (4" x 3") | 24 | 0314AA |
| 125 x 100 (5" x 4") | 20 | 0514AA |
| 150 x 100 (6" x 4") | 9 | 0614AA |
| 150 x 125 (6" x 5") | 9 | 0516AA |
| 200 x 150 (8" x 6") | 9 | 0816AA |
| 250 x 200 (10" x 8") | 6 | 1018AA |
| 300 x 250 (12" x 10") | 1 | 1210AA |
| 375 x 300 (15" x 12") | 1 | 1512AA |

External Snap Coupler



| Diameter mm (in) | Package Qty. | Product Code |
|------------------|--------------|--------------|
| 75 (3") | 24 | 0312AA |
| 100 (4") | 24 | 0412AA |
| 125 (5") | 24 | 0512AA |
| 150 (6") | 8 | 0612AA |
| 200 (8") | 6 | 0812AA |
| 250 (10") | 3 | 1012AA |

Split Coupler



| Diameter mm (in) | Package Qty. | Product Code |
|------------------|--------------|--------------|
| 100 (4") | 24 | 0411AA |
| 125 (5") | 24 | 0511AA |
| 150 (6") | 14 | 0611AA |
| 200 (8") | 8 | 0811AA |
| 250 (10") | 12 | 1011AA |

Singlewall Fittings

End Plugs, End Caps & Adapters

Snap End Caps*



0432AA



0332AA, 0832AA, 1032AA

| Diameter mm (in) | Package Qty. | Product Code |
|------------------|--------------|--------------|
| 75 (3") | 30 | 0332AA |
| 100 (4") | 40 | 0432AA |
| 200 (8") | 6 | 0832AA |
| 250 (10") | 6 | 1032AA |

Split End Caps*



0331AA



0431AA, 0531AA, 0631AA

| Diameter mm (in) | Package Qty. | Product Code |
|------------------|--------------|--------------|
| 100 (4") | 34 | 0431AA |
| 125 (5") | 24 | 0531AA |
| 150 (6") | 12 | 0631AA |
| 300 mm (12") | | 1267AA |
| 375 mm (15") | | 1567AA |
| 450 mm (18") | | 1867AA |
| 600 mm (24") | | 2467AA |

Internal End Plugs



Solid End Plug



Perforated End Plug

| Diameter mm (in) | Package Qty. | Type | Product Code |
|------------------|--------------|------------|--------------|
| 75 (3") | 100 | Solid | 0333AA |
| 100 (4") | 100 | Solid | 0433AA |
| | | Perforated | 0434AA |
| 125 (5") | 100 | Solid | 0533AA |
| 150 (6") | 50 | Solid | 0633AA |

Dissimilar Snap Adapters



0462AA



0362AA, 0562AA
0662AA, 0862AA

| Diameter mm (in) | Package Qty. | Type | Product Code |
|------------------|--------------|---------------|--------------|
| 75 (3") | 24 | Clay | 0362AA |
| 100 (4") | 24 | Clay | 0462AA |
| 125 (5") | 24 | Clay | 0562AA |
| 150 (6") | 11 | Clay | 0662AA |
| 200 (8") | 9 | Clay | 0862AA |
| 100 (4") | 24 | Sewer & Drain | 0467AA |
| 100 (4") | 24 | Septic Tank | 0463AA |

Downspout Adapters



0364AA



0464AA



0465AA



0466AA



0664AA

| Pipe Diameter x Downspout Dimensions mm (in) | Package Qty. | Product Code |
|--|--------------|--------------|
| 75 x 81 x 62.5 (3" x 3.25" x 2.5") | 24 | 0364AA |
| 100 x 81 62.5 (4" x 3.25" x 2.5") | 24 | 0464AA |
| 100 x 106 x 75 (4" x 4.25" x 3") | 20 | 0465AA |
| 100 x 63 x 63 (4" x 2.56" x 2.56") | 24 | 0466AA |
| 150 x 100 x 150 (6" x 4" x 6") | 1 | 0664AA |

*End caps are for horizontal pipe applications only.

Singlewall Fittings

Tees

Snap Tee



0421AA



0321AA, 0525AA, 0626AA

| Diameter mm (in) | Package Qty. | Product Code |
|------------------|--------------|--------------|
| 75 (3") | 12 | 0321AA |
| 100 (4") | 8 | 0421AA |
| 125 (5") | 4 | 0525AA |
| 150 (6") | 3 | 0626AA |

Blind Tee



| Diameter mm (in) | Package Qty. | Product Code |
|------------------|--------------|--------------|
| 100 (4") | 8 | 0441AA |
| 150 (6") | 3 | 0641AA |

Reducing Tee



| Diameter Main x Stub mm (in) | Package Qty. | Product Code |
|------------------------------|--------------|--------------|
| 125 x 100 (5" x 4") | 4 | 0524AA |
| 150 x 100 (6" x 4") | 3 | 0624AA |

Multiple Tee



| Diameter Main x Stub mm (in) | Package Qty. | Product Code |
|--|--------------|--------------|
| 150 x 75/100/125/150 (6" x 3"/4"/5"/6") | 3 | 0644AA |
| 200 x 100/125/150/200 (8" x 4"/5"/6"/8") | 1 | 0844AA |
| 250 x 150/200/250 (10" x 6"/8"/10") | 1 | 1044AA |

Blind Multiple Tee



| Diameter Main x Stub mm (in) | Package Qty. | Product Code |
|-----------------------------------|--------------|--------------|
| 200 x 100/150/200 (8" x 4"/6"/8") | 1 | 0847AA |
| 250 x 200/250 (10" x 8"/10") | 1 | 1047AA |
| 300 x 250/300 (12" x 10"/12") | 1 | 1247AA |

Multiple Cross Tee



| Diameter mm (in) | Package Qty. | Product Code |
|------------------|--------------|--------------|
| 150 (6") | 3 | 0654AA |

Singlewall Fittings

Tap Tee, Elbow, Wye

Internal Tap Tee



| Diameter Main x Stub mm (in) | Package Qty. | Product Code |
|--|--------------|--------------|
| 75 x 150/200 (3" x 6"/8") | 24 | 0350AA |
| 100 x 150/200/250/300 (4" x 6"/8"/10"/12") | 24 | 0480AA |
| 125 x 250/300 (5" x 10"/12") | 25 | 0550AA |
| 150 x 375/450/600 (6" x 15"/18"/24") | 25 | 0650AA |
| 150 x 750/900 (6" x 30"/36") | 25 | 0670AA |

Agriculture Internal Tap Tee



| Diameter Main x Stub mm (in) | Package Qty. | Product Code |
|--|--------------|--------------|
| 100 x 150/200 (4" x 6"/8") | 24 | 0450AA |
| 100 x 250/300 (4" x 10"/12") | 24 | 0410AA |
| 100 x 150/200/250/300 (4" x 6"/8"/10"/12") | 24 | 0480AA |

Wye



| Diameter mm (in) | Package Qty. | Product Code |
|------------------|--------------|--------------|
| 75 (3") | 7 | 0322AA |
| 100 (4") | 5 | 0422AA |
| 125 (5") | 4 | 0522AA |
| 150 (6") | 2 | 0622AA |
| 200 (8") | 1 | 0822AA |

90° Snap Elbow



0490AA

0390AA

| Diameter mm (in) | Package Qty. | Product Code |
|------------------|--------------|--------------|
| 75 (3") | 12 | 0390AA |
| 100 (4") | 10 | 0490AA |

45° Snap Elbow



| Diameter mm (in) | Package Qty. | Product Code |
|------------------|--------------|--------------|
| 100 (4") | 15 | 0445AA |

Specialty Fittings

Hickenbottom & Precision Intakes

Hickenbottom



Hickenbottom Riser



Hickenbottom Restrictor

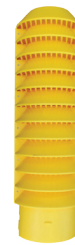
| Size mm (in) | Description | Product Code |
|-----------------------|---------------------------|--------------|
| 125 x 25 (5" x 1") | Orange Intake (12 holes) | 5013GC |
| 125 x 25 (5" x 1") | Orange Riser with Cap Top | 5023GC |
| 125 x 8 (5" x 5/16") | Orange Extension | 5033GC |
| 125 (5") | Blind Tee | 5043GC |
| 125 (5") | Restrictor | 5063GC |
| 150 x 25 (6" x 1") | Orange Riser with Cap Top | 6023GC |
| 150 x 8 (6" x 5/16") | Orange Extension | 6033GC |
| 150 (6") | Black Slotted Intake | 6073GC |
| 150 (6") | Black Blank Section | 6053GC |
| 150 (6") | Black Riser Blind Tee | 6043GC |
| 150 (6") | Restrictor | 6063GC |
| 200 x 25 (8" x 1") | Orange Riser with Cap Top | 0823GC |
| 200 x 8 (8" x 5/16") | Orange Extension | 0833GC |
| 200 (8") | Black Slotted Intake | 0873GC |
| 200 (8") | Black Blank Section | 0853GC |
| 200 (8") | Black Riser Blind Tee | 0843GC |
| 200 (8") | Restrictor | 0863GC |
| 250 x 25 (10" x 1") | Orange Riser with Cap Top | 1023GC |
| 250 x 8 (10" x 5/16") | Orange Extension | 1033GC |
| 250 (10") | Black Slotted Intake | 1073GC |
| 250 (10") | Black Blank Section | 1053GC |
| 250 (10") | Black Riser Blind Tee | 1043GC |
| 300 x 25 (12" x 1") | Orange Riser with Cap Top | 1223GC |
| 300 x 8 (12" x 5/16") | Orange Extension | 1233GC |
| 300 (12") | Black Slotted Intake | 1273GC |
| 300 (12") | Black Blind Tee | 1243GC |

Precision Intakes



| Size mm (in) | Description | Product Code |
|-----------------------|---------------------------|--------------|
| 150 x 25 (6" x 1") | Yellow Riser with Cap Top | 6023GCV |
| 150 x 8 (6" x 5/16") | Yellow Extension | 6033GCV |
| 150 (6") | Black Riser Blind Tee | 6043GCV |
| 150 (6") | Restrictor | 6063GCV |
| 200 x 25 (8" x 1") | Yellow Riser with Cap Top | 0823GCV |
| 200 x 8 (8" x 5/16") | Yellow Extension | 0833GCV |
| 200 (8") | Black Riser Blind Tee | 0843GCV |
| 200 (8") | Restrictor | 0863GCV |
| 250 x 25 (10" x 1") | Yellow Riser with Cap Top | 1023GCV |
| 250 x 8 (10" x 5/16") | Yellow Extension | 1033GCV |
| 250 (10") | Black Riser Blind Tee | 1043GCV |

Quick Drain Riser



| Size Diameter x inlet mm (in) | Product Code |
|--------------------------------------|--------------|
| 150 x 150 (6" x 6") | 0606QD |
| 250 x 150 (10" x 6") | 1006QD |
| 250 x 200 (10" x 8") | 1008QD |
| 150 x 150 (6" x 6") adjustable inlet | 0606TPTQD |

Specialty Fittings

End Sections, Trash & Animal Guards

Animal Metal Finger Guards



| Size mm (in) | Material | Quantity | Product Code |
|--------------|-----------------|----------|--------------|
| 100 (4") | Zinc | 100 | 0470DA |
| 100 (4") | Stainless Steel | 100 | 0470DASS |
| 150 (6") | Zinc | 100 | 0670DA |
| 150 (6") | Stainless Steel | 100 | 0670DASS |
| 200 (8") | Zinc | 50 | 0870DA |
| 200 (8") | Stainless Steel | 1 | 0870DASS |
| 250 (10") | Zinc | 30 | 1070DA |
| 300 (12") | Zinc | 30 | 1270DA |
| 375 (15") | Zinc | 10 | 1570DA |
| 450 (18") | Zinc | 1 | 1870DA |
| 600 (24") | Zinc | 1 | 2470DA |
| 750 (30") | | 1 | 3070DA |
| 900 (36") | | 1 | 3670DA |
| 1050 (42") | | 1 | 4270DA |
| 1200 (48") | | 1 | 4870DA |

Flared End Sections



| Size mm (in) | Product Code |
|-------------------|--------------|
| 250 (10") | 1015NP |
| 300/375 (12"/15") | 1215NP |
| 450 (18") | 1810NP |
| 600 (24") | 2410NP |

Animal Solid Guards



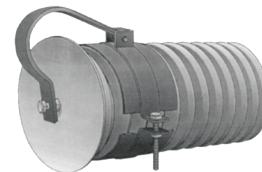
| Size mm (in) | Product Code |
|--------------|--------------|
| 100 (4") | 0471DA |
| 150 (6") | 0671DA |
| 200 (8") | 0871DA |
| 250 (10") | 1071DA |
| 300 (12") | 1271DA |

Bar Guards



| Size mm (in) | Product Code |
|--------------|--------------|
| 100 (4") | 0420DA |
| 125 (5") | 0520DA |
| 150 (6") | 0620DA |
| 200 (8") | 0820DA |
| 250 (10") | 1020DA |
| 300 (12") | 1220DA |
| 375 (15") | 1520DA |
| 450 (18") | 1820DA |
| 600 (24") | 2420DA |
| 750 (30") | 3020DA |
| 900 (36") | 3620DA |

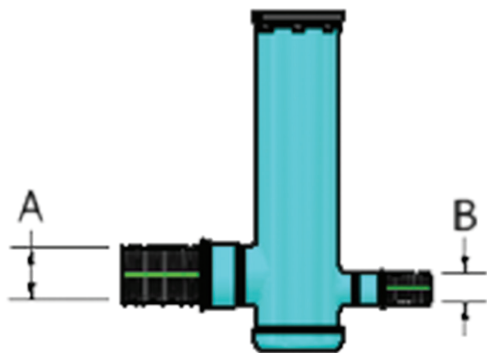
Flap Gates



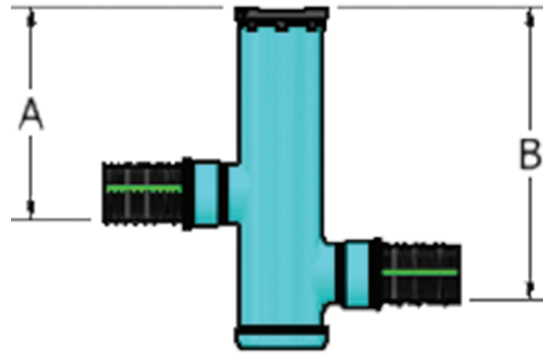
| Size mm (in) | Product Code |
|--------------|--------------|
| 100 (4") | 0440DA |
| 150 (6") | 0640DA |
| 200 (8") | 0840DA |
| 250 (10") | 1040DA |
| 300 (12") | 1240DA |
| 375 (15") | 1540DA |
| 450 (18") | 1840DA |
| 600 (24") | 2440DA |
| 750 (30") | 3040DA |
| 900 (36") | 3640DA |

Nyloplast

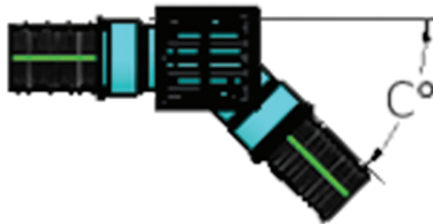
Drain Basins



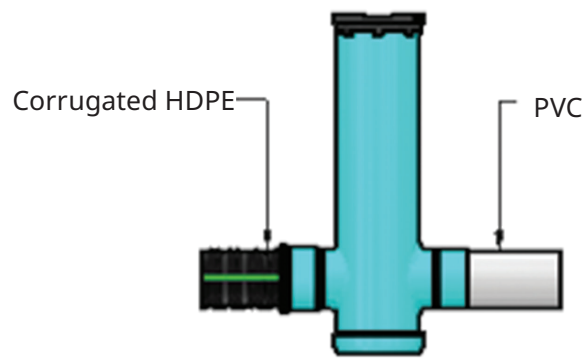
Change Diameter



Change Elevation



Change Direction



Change Pipe

| Part Number | Product Description | Available Outlets |
|-------------|---------------------------|---------------------|
| 2808AG__ | 200 mm (8") Custom Basin | 100-200 mm (4"-8") |
| 2810AG__ | 250 mm (10") Custom Basin | 100-250 mm (4"-10") |
| 2812AG__ | 300 mm (12") Custom Basin | 100-300 mm (4"-12") |
| 2815AG__ | 375 mm (15") Custom Basin | 100-375 mm (4"-15") |
| 2818AG_ | 450 mm (18") Custom Basin | 100-450 mm (4"-18") |
| 2824AG__ | 600 mm (24") Custom Basin | 100-600 mm (4"-24") |
| 2830AG__ | 750 mm (30") Custom Basin | 100-750 mm (4"-30") |
| 2836AG__ | 900 mm (36") Custom Basin | 100-900 mm (4"-36") |

28 08 AG __

- "28" is our standard drain basin series. Includes all round grate options
- The next two numbers represent the basin body diameter
- AG is the product code for Drain Basins
- The second set of numbers is the overall height of the drain basin in foot increments 3 , 5 , 7 , 10

Drain Basins connect to these common pipe types: ADS N12, ADS HP, PVC SCH.40, SCH.80, PVC. If pipe type does not fit any of these please note type of pipe and outside diameter of pipe and call Nyloplast at 866-888-8479 for technical assistance.

Nyloplast

Inline Drains

Inline Drains

| Part Number | Product Description | Available Outlets |
|-------------|---------------------------|---------------------|
| 2708AG__X | 200 mm (8") Inline Drain | 100-200 mm (4"-8") |
| 2710AG__X | 250 mm (10") Inline Drain | 100-250 mm (4"-10") |
| 2712AG__X | 300 mm (12") Inline Drain | 100-300 mm (4"-12") |
| 2715AG__X | 375 mm (15") Inline Drain | 100-375 mm (4"-15") |
| 2718AG__X | 450 mm (18") Inline Drain | 100-450 mm (4"-18") |
| 2724AG__X | 600 mm (24") Inline Drain | 100-600 mm (4"-24") |
| 2730AG__X | 750 mm (30") Inline Drain | 100-750 mm (4"-30") |
| 2736AG__X | 900 mm (36") Inline Drain | 100-900 mm (4"-36") |

The set of blanks is the pipe size adapting to (choose from 04, 06, 08, 10, 12, 15, 18, 24 or 30)

The **X** represents the pipe type adapting to. Replace **X** with one of the following:

N = ADS dual wall pipe

D = DWV PVC (Sch 40 or Sch 80)

S = SWR PVC (ASTM D3034; SDR 35 SWR & SDR 26 SWR PVC)

O = Big O/Armtec

If pipe type does not fit any of these, leave **X** blank and note type of pipe and outside diameter of pipe.



Universal Inline Drains

| Part Number | Product Description | Available Outlets |
|-------------|----------------------------|---------------------|
| 2708AGNB | HDPE gasketed connections | 100-200 mm (4"-8") |
| 2708AGSB | PVC glue joint connections | 100-200 mm (4"-8") |
| 2712AGNB | HDPE gasketed connections | 150-300 mm (6"-12") |
| 2712AGSB | PVC glue joint connections | 150-250 mm (6"-10") |
| 2712AG4NB | HDPE gasketed connections | 100-300 mm (4"-12") |
| 2712AG4SB | PVC glue joint connections | 100-250 mm (4"-10") |



* 12" HDPE outlet connections are not gasketed. Watertight connection with gasket is available upon request

Nyloplast

Inspection Ports

Inspection Ports for StormTech Systems

| Part Number | Product Description |
|---------------|--|
| 2708AG4IPKIT | 200 x 100 mm (8" x 4") Inspection Port Kit |
| 2712AG6IPKIT | 300 x 150 mm (12" x 6") Inspection Port Kit |
| 2712AG10IPKIT | 300 x 250 mm (12" x 10") Inspection Port Kit |

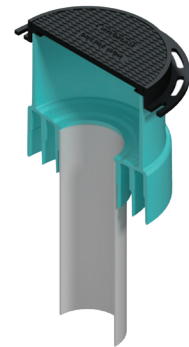
*_IPKIT includes frame & solid cover, PVC inspection port body, SDR-35 Inserta Tee, and 4 oz. water solution bottle



Inspection Ports for StormTech Systems

(Solid cover included; Inserta Tee not included)

| Part Number | Product Description |
|-------------|---|
| 2708AG4IP | 200 x 100 mm (8" x 4") Inspection Port ONLY |
| 2712AG6IP | 300 x 150 mm (12" x 6") Inspection Port ONLY |
| 2712AG10IP | 300 x 250 mm (12" x 10") Inspection Port ONLY |



Nyloplast

Curb Inlet Structures

Drain Basins

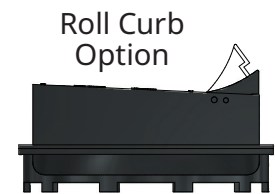
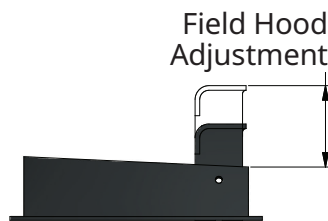
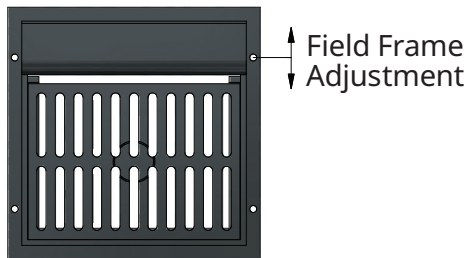
| Part Number | Product Description | Available Outlets |
|-------------|----------------------------------|---------------------|
| 3012AGS__ | .6 x .6 m (2' x 2') Square Grate | 100-300 mm (4"-12") |
| 3015AGS__ | .6 x .6 m (2' x 2') Square Grate | 100-375 mm (4"-15") |
| 3018AGS__ | .6 x .6 m (2' x 2') Square Grate | 100-450 mm (4"-18") |
| 3024AGS__ | .6 x .6 m (2' x 2') Square Grate | 100-600 mm (4"-24") |
| 3030AGS__ | .6 x .6 m (2' x 2') Square Grate | 100-750 mm (4"-30") |
| 3036AGS__ | .6 x .6 m (2' x 2') Square Grate | 100-900 mm (4"-36") |
| 3018AGR__ | .6 x .9 m (2' x 3') Rect. Grate | 100-450 mm (4"-18") |
| 3024AGR__ | .6 x .9 m (2' x 3') Rect. Grate | 100-600 mm (4"-24") |
| 3030AGR__ | .6 x .9 m (2' x 3') Rect. Grate | 100-750 mm (4"-30") |
| 3036AGR__ | .6 x .9 m (2' x 3') Rect. Grate | 100-900 mm (4"-36") |

The second set of numbers is the overall height of the drain basin in foot increments 3, 5, 7, 10

Drain Basin connects to these common pipe types:

- N** = ADS dual wall pipe
- D** = DWV PVC (Sch 40 or Sch 80)
- S** = SWR PVC (ASTM D3034; SDR 35 SWR & SDR 26 SWR PVC)
- O** = Big O/Armtec

If pipe type does not fit any of these please note type of pipe and outside diameter of pipe and call Nyloplast at 866-888-8479 for technical assistance.



Nyloplast

Road & Highway Structures

Drain Basins

| Part Number | Product Description | Available Outlets |
|-------------|----------------------------------|---------------------|
| 3212AGS__ | .6 x .6 m (2' x 2') Square Grate | 100-300 mm (4"-12") |
| 3215AGS__ | .6 x .6 m (2' x 2') Square Grate | 100-375 mm (4"-15") |
| 3218AGS__ | .6 x .6 m (2' x 2') Square Grate | 100-450 mm (4"-18") |
| 3224AGS__ | .6 x .6 m (2' x 2') Square Grate | 100-600 mm (4"-24") |
| 3230AGS__ | .6 x .6 m (2' x 2') Square Grate | 100-750 mm (4"-30") |
| 3236AGS__ | .6 x .6 m (2' x 2') Square Grate | 100-900 mm (4"-36") |
| 3218AGR__ | .6 x .9 m (2' x 3') Rect. Grate | 100-450 mm (4"-18") |
| 3224AGR__ | .6 x .9 m (2' x 3') Rect. Grate | 100-600 mm (4"-24") |
| 3230AGR__ | .6 x .9 m (2' x 3') Rect. Grate | 100-750 mm (4"-30") |
| 3236AGR__ | .6 x .9 m (2' x 3') Rect. Grate | 100-900 mm (4"-36") |

The second set of numbers is the overall height of the drain basin in foot increments 3, 5, 7, 10

Drain Basin connects to these common pipe types:

- N** = ADS dual wall pipe
- D** = DWV PVC (Sch 40 or Sch 80)
- S** = SWR PVC (ASTM D3034; SDR 35 SWR & SDR 26 SWR PVC)
- O** = Big O/Armtec

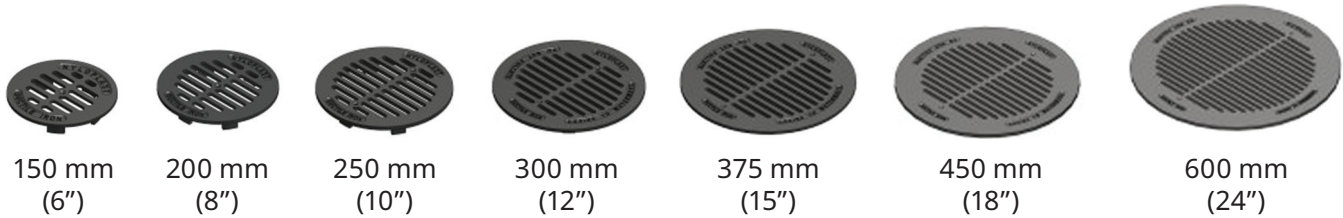
If pipe type does not fit any of these please note type of pipe and outside diameter of pipe and call Nyloplast at 866-888-8479 for technical assistance.



Nyloplast

Grates

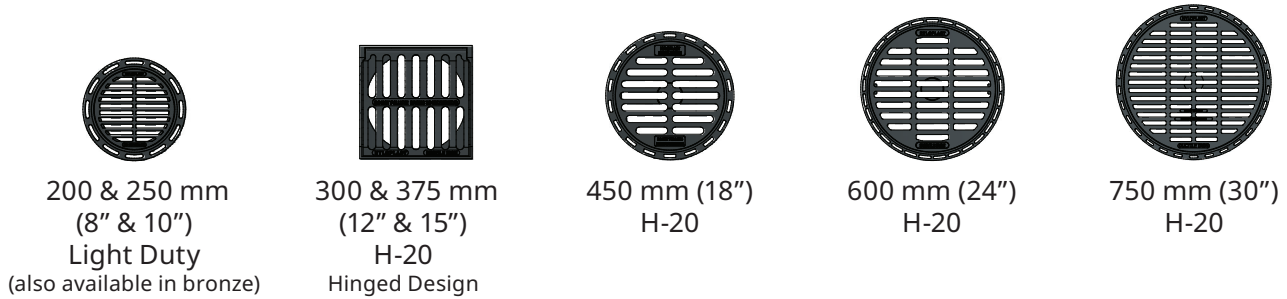
Drop-In Grates



Domed Grates



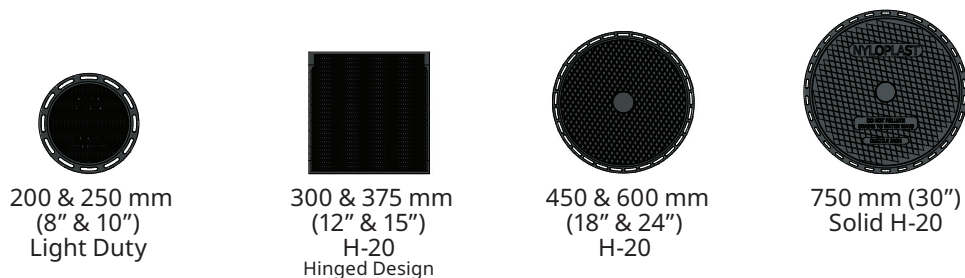
Standard Grates



Pedestrian Grates



Solid Cover Grates



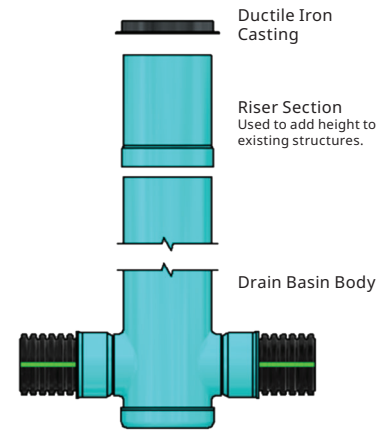
Nyloplast

Riser Sections, Sump Inserts & Add-A-Branch

Riser Sections

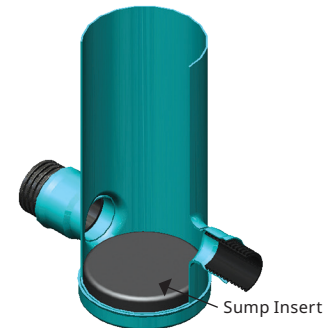
| Part Number | Product Description |
|-------------|----------------------------|
| 2908AG__ | 200 mm (8") Riser Section |
| 2910AG__ | 250 mm (10") Riser Section |
| 2912AG__ | 300 mm (12") Riser Section |
| 2915AG__ | 375 mm (15") Riser Section |
| 2918AG__ | 450 mm (18") Riser Section |
| 2924AG__ | 600 mm (24") Riser Section |
| 2930AG__ | 750 mm (30") Riser Section |
| 2936AG__ | 900 mm (36") Riser Section |

Blanks are the riser's height, choose from 01-07 (one foot- two foot).



Sump Inserts

| Part Number | Basin Diameter |
|-------------|----------------|
| 3812AGSI | 300 mm (12") |
| 3815AGSI | 375 mm (15") |
| 3818AGSI | 450 mm (18") |
| 3824AGSI | 600 mm (24") |
| 3830AGSI | 750 mm (30") |



Add-A-Branch Kits

| Part No. | Pipe Size | Min. Basin Size |
|-----------|--------------|--------------------------------------|
| 6004AG_ | 100 mm (4") | 200 mm (8") |
| 6006AG_ | 150 mm (6") | 250 mm (10") |
| 6008AG_ | 200 mm (8") | 300 mm (12") |
| 6010AG__ | 250 mm (10") | 375 mm (15") |
| 6012AG_ | 300 mm (12") | 450 mm (18") |
| 6015AG_ | 375 mm (15") | 600 mm (24") |
| 6004AG_30 | 100 mm (4") | Spec. to 750 mm (30") & 900 mm (36") |
| 6006AG_30 | 150 mm (6") | Spec. to 750 mm (30") & 900 mm (36") |
| 6008AG_30 | 200 mm (8") | Spec. to 750 mm (30") & 900 mm (36") |
| 6010AG_30 | 250 mm (10") | Spec. to 750 mm (30") & 900 mm (36") |
| 6012AG_30 | 300 mm (12") | Spec. to 750 mm (30") & 900 mm (36") |
| 6015AG_30 | 375 mm (15") | Spec. to 750 mm (30") & 900 mm (36") |
| 6018AG_30 | 450 mm (18") | Spec. to 750 mm (30") & 900 mm (36") |
| 6024AG_36 | 600 mm (24") | Spec. to 900 mm (36") |



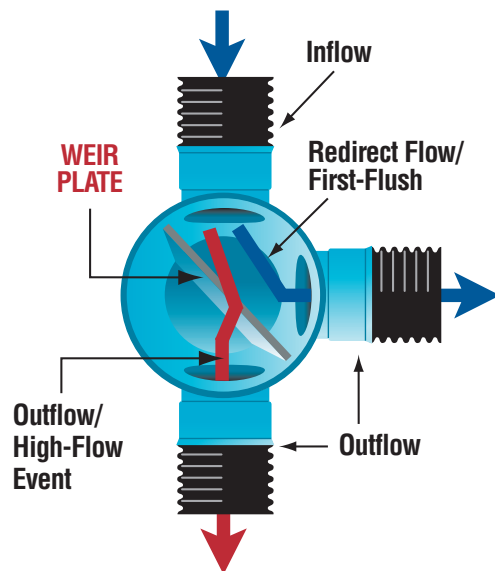
Nyloplast

Weir Structures

Weir Structures

| Part Number | Product Description |
|-------------|---|
| 2824AG_WE | 600 mm (24") Custom Basin with Grate & Weir |
| 2830AG_WE | 750 mm (30") Custom Basin with Grate & Weir |
| 2836AG_WE | 900 mm (36") Custom Basin with Grate & Weir |
| 3024AGS_WE | 600 mm (24") Curb Inlet Structure with 2' x 2' (0.6 x 0.6 m) Grate & Weir |
| 3030AGS_WE | 750 mm (30") Curb Inlet Structure with 2' x 2' (0.6 x 0.6 m) Grate & Weir |
| 3036AGS_WE | 900 mm (36") Curb Inlet Structure with 2' x 2' (0.6 x 0.6 m) Grate & Weir |
| 3024AGR_WE | 600 mm (24") Curb Inlet Structure with 2' x 3' (0.6 x 0.9 m) Grate & Weir |
| 3030AGR_WE | 750 mm (30") Curb Inlet Structure with 2' x 3' (0.6 x 0.9 m) Grate & Weir |
| 3036AGR_WE | 900 mm (36") Curb Inlet Structure with 2' x 3' (0.6 x 0.9 m) Grate & Weir |
| 3224AGS_WE | 600 mm (24") Road & Hwy Structure with 2' x 2' (0.6 x 0.6 m) Grate & Weir |
| 3230AGS_WE | 750 mm (30") Road & Hwy Structure with 2' x 2' (0.6 x 0.6 m) Grate & Weir |
| 3236AGS_WE | 900 mm (36") Road & Hwy Structure with 2' x 2' (0.6 x 0.6 m) Grate & Weir |
| 3224AGR_WE | 600 mm (24") Road & Hwy Structure with 2' x 3' (0.6 x 0.9 m) Grate & Weir |
| 3230AGR_WE | 750 mm (30") Road & Hwy Structure with 2' x 3' (0.6 x 0.9 m) Grate & Weir |
| 3236AGR_WE | 900 mm (36") Road & Hwy Structure with 2' x 3' (0.6 x 0.9 m) Grate & Weir |

The blank is the height of structure, either 1.5 or 3 m (5' or 10').



Retention/Detention

LandMax Manifolds - Size on Size Stubs

Plain End Component Manifold

| Pipe Size mm (in) | Product Code | | |
|----------------------|--------------|--------|--------|
| | Single | Double | Triple |
| 300 (12") | 1251AN | 1252AN | 1253AN |
| 375 (15") | 1551AN | 1552AN | 1553AN |
| 450 (18") | 1851AN | 1852AN | 1853AN |
| 600 (24") | 2451AN | 2452AN | 2453AN |
| 750 (30") | 3051AN | 3052AN | 3053AN |
| 900 (36") | 3651AN | 3652AN | 3653AN |
| 1050 (42") | 4251AN | 4252AN | |
| 1200 (48") | 4851AN | 4852AN | |
| 1500 (60") | 6051AN | 6052AN | |



N-12 PLAIN END SINGLE



N-12 PLAIN END DOUBLE



N-12 PLAIN END TRIPLE

Watertight Bell End Component Manifold

| Pipe Size mm (in) | Product Code | | |
|----------------------|--------------|-----------|-----------|
| | Single | Double | Triple |
| 300 (12") | 1251AN65B | 1252AN65B | 1253AN65B |
| 375 (15") | 1551AN65B | 1552AN65B | 1553AN65B |
| 450 (18") | 1851AN65B | 1852AN65B | 1853AN65B |
| 600 (24") | 2451AN65B | 2452AN65B | 2453AN65B |
| 750 (30") | 3051AN65B | 3052AN65B | 3053AN65B |
| 900 (36") | 3651AN65B | 3652AN65B | 3653AN65B |
| 1050 (42") | 4251AN65B | 4252AN65B | |
| 1200 (48") | 4851AN65B | 4852AN65B | |
| 1500 (60") | 6051AN65B | 6052AN65B | |



N-12 WT BELL END SINGLE



N-12 WT BELL END DOUBLE



N-12 WT BELL END TRIPLE

Watertight Gasket End Component Manifold

| Pipe Size mm (in) | N-12 WT Component Manifold Gasket End Product Code | | |
|----------------------|--|-----------|-----------|
| | Single | Double | Triple |
| 300 (12") | 1251AN65G | 1252AN65G | 1253AN65G |
| 375 (15") | 1551AN65G | 1552AN65G | 1553AN65G |
| 450 (18") | 1851AN65G | 1852AN65G | 1853AN65G |
| 600 (24") | 2451AN65G | 2452AN65G | 2453AN65G |
| 750 (30") | 3051AN65G | 3052AN65G | 3053AN65G |
| 900 (36") | 3651AN65G | 3652AN65G | 3653AN65G |
| 1050 (42") | 4251AN65G | 4252AN65G | |
| 1200 (48") | 4851AN65G | 4852AN65G | |
| 1500 (60") | 6051AN65G | 6052AN65G | |



N-12 WT GASKET END SINGLE



N-12 WT GASKET END DOUBLE



N-12 WT GASKET END TRIPLE

NOTE: CONTACT YOUR LOCAL SALES REPRESENTATIVE FOR AVAILABILITY OF SIZES NOT LISTED ABOVE. *FOR RETENTION SYSTEMS ONLY.

Retention/Detention

LandMax Manifold Bend

N-12 90° Bend Manifold

| Pipe Size mm (in) | Plain End | WT Bell/Bell | WT Gasket/ Gasket | WT Bell/Gasket |
|----------------------|-----------|--------------|----------------------|----------------|
| 300 (12") | 1298AN | 1298AN65BB | 1298AN65GG | 1298AN65BG |
| 375 (15") | 1598AN | 1598AN65BB | 1598AN65GG | 1598AN65BG |
| 450 (18") | 1898AN | 1898AN65BB | 1898AN65GG | 1898AN65BG |
| 600 (24") | 2498AN | 2498AN65BB | 2498AN65GG | 2498AN65BG |
| 750 (30") | 3098AN | 3098AN65BB | 3098AN65GG | 3098AN65BG |
| 900 (36") | 3698AN | 3698AN65BB | 3698AN65GG | 3698AN65BG |
| 1050 (42") | 4298AN | 4298AN65BB | 4298AN65GG | 4298AN65BG |
| 1200 (48") | 4898AN | 4898AN65BB | 4898AN65GG | 4898AN65BG |
| 1500 (60") | 6098AN | 6098AN65BB | 6098AN65GG | 6098AN65BG |



**N-12
PLAIN END**



**N-12 WT
BELL x BELL**



**N-12 WT
GASKET x GASKET**



**N-12 WT
BELL x GASKET**

NOTE: CONTACT YOUR LOCAL SALES REPRESENTATIVE FOR AVAILABILITY OF SIZES NOT LISTED ABOVE.
*FOR RETENTION SYSTEMS ONLY.

Retention/Detention

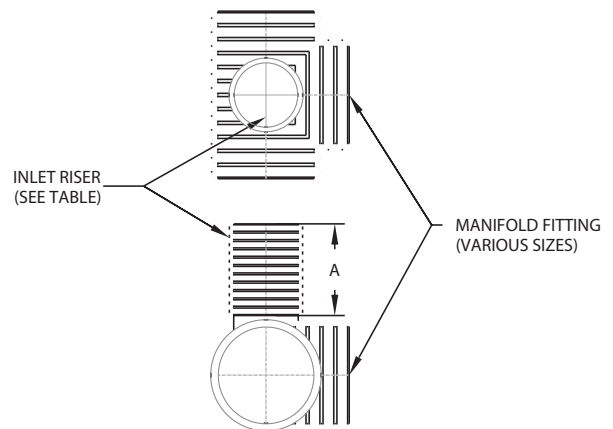
LandMax® Accessories

Fabricated Manifold Inlet Riser

| Pipe Size mm (in) | Plain End |
|-------------------|-----------|
| 100 (4") | 0403AN |
| 150 (6") | 0603AN |
| 200 (8") | 0803AN |
| 250 (10") | 1003AN |
| 300 (12") | 1203AN |
| 375 (15") | 1503AN |
| 450 (18") | 1803AN |
| 600 (24") | 2403AN |

This component item can only be ordered with standard manifold fittings or standard pipe. When ordering this component item, be sure to include shop drawing showing the location of inlet riser on standard manifold or pipe product.

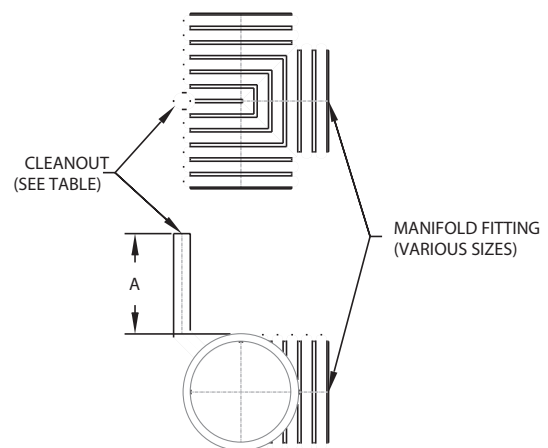
Contact your local sales representative for acceptable size combinations, i.e.: 48" manifold fitting with a 24" diameter riser. **Not all combinations of inlet riser on standard manifold or pipe product are allowed.**



Fabricated Manifold Cleanout Riser

| Pipe Size mm (in) | Plain End |
|-------------------|-----------|
| 100 (4") | 0402AN |
| 150 (6") | 0602AN |
| 200 (8") | 0802AN |

This component item can only be ordered with standard manifold fittings. When ordering this component item, be sure to include shop drawing showing the location of inlet riser on standard manifold.

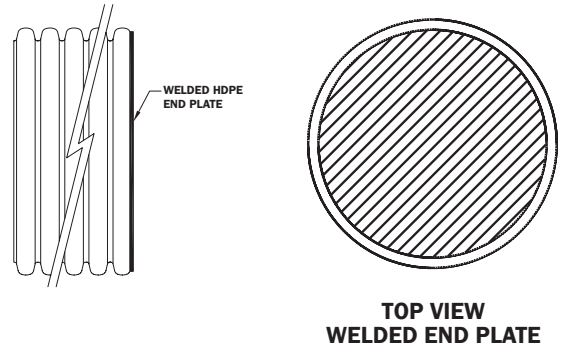


Retention/Detention

LandMax® Accessories

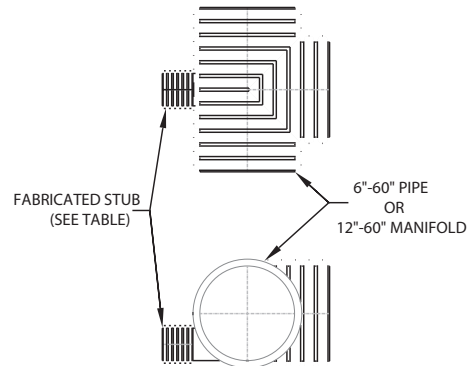
Welded End Plates - ST & WT Connection*

| Pipe Size mm (in) | Plain End |
|-------------------|-----------|
| 100 (4") | 0409AN |
| 150 (6") | 0609AN |
| 200 (8") | 0809AN |
| 250 (10") | 1009AN |
| 300 (12") | 1209AN |
| 375 (15") | 1509AN |
| 450 (18") | 1809AN |
| 600 (24") | 2409AN |
| 750 (30") | 3009AN |
| 900 (36") | 3609AN |
| 1050 (42") | 4209AN |
| 1200 (48") | 4809AN |
| 1500 (60") | 6009AN |



Fabricated Stub

| Pipe Size mm (in) | Plain End |
|-------------------|-----------|
| 100 (4") | 0406AN |
| 150 (6") | 0606AN |
| 200 (8") | 0806AN |
| 250 (10") | 1006AN |
| 300 (12") | 1206AN |
| 375 (15") | 1506AN |
| 450 (18") | 1806AN |
| 600 (24") | 2406AN |



This component item can only be ordered with standard manifold fittings or standard pipe. When ordering this component item, be sure to include shop drawing showing the location of stub on standard manifold or pipe product.

Contact your local sales representative for acceptable size combinations, i.e.: 48" manifold fitting with a 24" stub. **Not all combinations of stub on standard manifold or pipe product are allowed.**

*End plates are for horizontal pipe applications only.

Retention/Detention

StormTech Chambers & End Caps

StormTech Chambers



MC-7200 MC-4500 MC-3500 SC-800 DC-780 SC-740 SC-310 SC-160LP

| Product Code | Dimensions L x W x H mm (in) | Nominal Weight lbs (kg) | Storage Capacity ft ³ (m ³) | Minimum Installed Storage ft ³ (m ³) |
|--------------|---------------------------------------|-------------------------|--|---|
| SC160 | 2170 x 635 x 305 (85.4" x 25" x 12") | 10.9 (24) | 0.19 (6.85) | 0.42 (14.7) |
| SC310 | 2170 x 864 x 406 (85.4" x 34" x 16") | 16.8 (37) | 0.42 (14.7) | 0.88 (31.0) |
| SC740 | 2170 x 1295 x 762 (85.4" x 51" x 30") | 33.6 (74) | 1.30 (45.9) | 2.12 (74.9) |
| SC800 | 2169 x 1295 x 838 (85.4" x 51" x 33") | 37.1 (82) | 1.43 (50.6) | 2.29 (81.0) |
| DC780 | 2170 x 1295 x 762 (85.4" x 51" x 30") | 36.3 (80) | 1.30 (46.2) | 2.20 (78.4) |
| MC3500 | 2286 x 1956 x 1143 (90" x 77" x 45") | 60.8 (134) | 3.11 (109.9) | 4.96 (175.0) |
| MC4500 | 1321 x 2540 x 1524 (52" x 100" x 60") | 56.7 (125) | 3.01 (106.5) | 4.60 (162.6) |
| MC7200 | 2108 x 2540 x 1524 (83" x 100" x 60") | 91.6 (202) | 4.98 (175.9) | 7.57 (267.3) |

StormTech End Caps



| Product Code | Dimensions L x W x H mm (in) | Nominal Weight lbs (kg) | Storage Capacity ft ³ (m ³) | Minimum Installed Storage ft ³ (m ³) |
|--------------|---|-------------------------|--|---|
| SC160IEPP | 112 x 472 x 297 (4.4" x 18.6" x 11.7") | 0.6 (2) | | |
| SC310EPE | 252 x 737 x 396 (9.9" x 29" x 15.6") | 1.8 (4) | | |
| SC740EPE | 310 x 1166 x 744 (12.2" x 45.9" x 29.3") | 5.9 (13) | | |
| SC800EPE | 310 x 1181 x 828 (12.2" x 46.5" x 32.6") | 5.9 (13) | | |
| MC3500IEPP | 673 x 1803 x 1145 (26.5" x 71" x 45.1") | 22.2 (49) | 0.42 (14.9) | 1.28 (45.1) |
| MC4500IEPP | 892 x 2291 x 1509 (35.1" x 90.2" x 59.4") | 40.8 (90) | 1.12 (39.5) | 3.26 (115.3) |
| MC7200IEPP | 892 x 2291 x 1509 (35.1" x 90.2" x 59.4") | 40.8 (90) | 1.12 (39.5) | 3.26 (115.3) |

Retention/Detention

Fabricated End Cap

Top Inlet



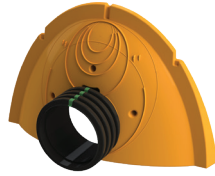
| Type | Diameter mm (in) | Product Code |
|---------------|------------------|---------------|
| SC-310 | 150 (6") | SC310EPE06T |
| | 150 (6") | SC310EPE06TPC |
| | 200 (8") | SC310EPE08T |
| | 200 (8") | SC310EPE08TPC |
| | 250 (10") | SC310EPE10T |
| | 250 (10") | SC310EPE10TPC |
| SC-740/DC-780 | 150 (6") | SC740EPE06T |
| | 200 (8") | SC740EPE08T |
| | 250 (10") | SC740EPE10T |
| | 300 (12") | SC740EPE12T |
| | 375 (15") | SC740EPE15T |
| | 450 (18") | SC740EPE18T |
| | 450 (18") | SC740EPE18LT |
| 450 (18") | SC740EPE18TPC | |
| SC-800 | 150 (6") | SC800EPE06TPC |
| | 200 (8") | SC800EPE08TPC |
| | 250 (10") | SC800EPE10TPC |
| | 300 (12") | SC800EPE12TPC |
| | 375 (15") | SC800EPE15TPC |
| | 450 (18") | SC800EPE18TPC |

| Type | Diameter mm (in) | Product Code |
|-------------------|------------------|----------------|
| MC-3500 | 150 (6") | MC3500IEPP06T |
| | 200 (8") | MC3500IEPP08T |
| | 250 (10") | MC3500IEPP10T |
| | 300 (12") | MC3500IEPP12T |
| | 375 (15") | MC3500IEPP15T |
| | 450 (18") | MC3500IEPP18T |
| | 450 (18") | MC3500IEPP18TC |
| | 450 (18") | MC3500IEPP18TW |
| | 600 (24") | MC3500IEPP24T |
| | 600 (24") | MC3500IEPP24TW |
| MC-4500 & MC-7200 | 600 (24") | MC3500IEPP24TC |
| | 200 (8") | MC4500REPE08T |
| | 300 (12") | MC4500REPE12T |
| | 375 (15") | MC4500REPE15T |
| | 450 (18") | MC4500REPE18TW |
| | 450 (18") | MC4500REPE18TC |
| | 600 (24") | MC4500REPE24TW |
| | 600 (24") | MC4500REPE24TC |

Retention/Detention

Fabricated End Cap

Bottom Inlet



| Type | Diameter mm (in) | Product Code |
|---------------|------------------|---------------|
| SC-310 | 150 (6") | SC310EPE06B |
| | 150 (6") | SC310EPE06BPC |
| | 200 (8") | SC310EPE08B |
| | 200 (8") | SC310EPE08BPC |
| | 250 (10") | SC310EPE10B |
| | 250 (10") | SC310EPE10BPC |
| | 300 (12") | SC310EPE12B |
| SC-740/DC-780 | 150 (6") | SC740EPE06B |
| | 200 (8") | SC740EPE08B |
| | 250 (10") | SC740EPE10B |
| | 300 (12") | SC740EPE12B |
| | 375 (15") | SC740EPE15B |
| | 450 (18") | SC740EPE18B |
| | 450 (18") | SC740EPE18LB |
| | 600 (24") | SC740EPE24B |
| | 600 (24") | SC740EPE24BL |
| 600 (24") | SC740EPE24LB | |
| SC-800 | 150 (6") | SC800EPE06BPC |
| | 200 (8") | SC800EPE08BPC |
| | 250 (10") | SC800EPE10BPC |
| | 300 (12") | SC800EPE12BPC |
| | 375 (15") | SC800EPE15BPC |
| | 450 (18") | SC800EPE18BPC |
| | 600 (24") | SC800EPE24BPC |

| Type | Diameter mm (in) | Product Code |
|-------------------|------------------|----------------|
| MC-3500 | 150 (6") | MC3500IEPP06B |
| | 200 (8") | MC3500IEPP08B |
| | 250 (10") | MC3500IEPP10B |
| | 300 (12") | MC3500IEPP12B |
| | 375 (15") | MC3500IEPP15B |
| | 450 (18") | MC3500IEPP18BC |
| | 450 (18") | MC3500IEPP18BW |
| | 600 (24") | MC3500IEPP24BC |
| | 600 (24") | MC3500IEPP24BW |
| | 600 (24") | MC3500IEPP30BC |
| MC-4500 & MC-7200 | 200 (8") | MC4500REPE08B |
| | 300 (12") | MC4500REPE12B |
| | 375 (15") | MC4500REPE15B |
| | 450 (18") | MC4500REPE18B |
| | 450 (18") | MC4500REPE18BW |
| | 450 (18") | MC4500REPE18BC |
| | 600 (24") | MC4500REPE24BW |
| | 600 (24") | MC4500REPE24BC |
| | 450 (30") | MC4500REPE30BC |
| | 600 (36") | MC4500REPE36BC |
| 750 (42") | MC4500REPE42BC | |

Retention/Detention

StormTech 90° Bends, Size-On-Size Single Manifolds



SC-310 90° Bends

| Diameter mm (in) | Product Code |
|------------------|--------------|
| 200 (8") | 0898AN31 |
| 300 (12") | 1298AN31 |



SC-310

| Diameter mm (in) | Product Code |
|------------------|--------------|
| 200 (8") | 0851AN3108 |
| 300 (12") | 1251AN3112 |

SC-740/SC-800/DC-780 90° Bends

| Diameter mm (in) | Product Code |
|------------------|--------------|
| 300 (12") | 1298AN74 |
| 375 (15") | 1598AN74 |
| 450 (18") | 1898AN74 |
| 600 (24") | 2498AN74 |
| 600 (24") | 2498ANL74 |

SC-740/SC-800/DC-780

| Diameter mm (in) | Product Code |
|------------------|--------------|
| 300 (12") | 1251AN7412 |
| 375 (15") | 1551AN7415 |
| 450 (18") | 1851AN7418 |
| 600 (24") | 2451AN7424 |
| 600 (24") | 2451ANL7424 |

MC-3500 90° Bends

| Diameter mm (in) | Product Code |
|------------------|--------------|
| 300 (12") | 1298AN3512 |
| 375 (15") | 1598AN3515 |
| 450 (18") | 1898AN3518 |
| 600 (24") | 2498AN3524 |
| 600 (24") | 2498ANL3524 |

MC-3500

| Diameter mm (in) | Product Code |
|------------------|--------------|
| 300 (12") | 1251AN3512 |
| 375 (15") | 1551AN3515 |
| 450 (18") | 1851AN3518 |
| 600 (24") | 2451AN3524 |
| 600 (24") | 2451ANL3524 |

MC-4500/MC-7200 90° Bends

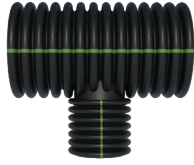
| Diameter mm (in) | Product Code |
|------------------|--------------|
| 300 (12") | 1298AN4512 |
| 375 (15") | 1598AN4515 |
| 450 (18") | 1898AN4518 |
| 600 (24") | 2498AN4524 |
| 600 (24") | 2498ANL4524 |

MC-4500/MC-7200

| Diameter mm (in) | Product Code |
|------------------|--------------|
| 300 (12") | 1251AN4512 |
| 375 (15") | 1551AN4515 |
| 450 (18") | 1851AN4518 |
| 600 (24") | 2451AN4524 |
| 600 (24") | 2451ANL4524 |

Retention/Detention

StormTech Reducing Single Manifold & FLAMP



SC-310

| Size mm (in) | Product Code |
|-----------------------|--------------|
| 300 x 200 (12" x 8") | 1251AN3108 |
| 450 x 200 (18" x 8") | 1851AN3108 |
| 450 x 300 (18" x 12") | 1851AN3112 |
| 600 x 200 (24" x 8") | 2451AN3108 |
| 600 x 200 (24" x 8") | 2451ANL3108 |
| 600 x 300 (24" x 12") | 2451AN3112 |
| 600 x 300 (24" x 12") | 2451ANL3112 |



MC-3500

| Size mm (in) | Product Code |
|------------------------|--------------|
| 750 x 600 (30" x 24") | 3051AN3524 |
| 750 x 600 (30" x 24") | 3051ANL3524 |
| 900 x 600 (36" x 24") | 3651AN3524 |
| 1050 X 600 (42" x 24") | 4251AN3524 |
| 1200 x 600 (48" x 24") | 4851AN3524 |
| 1200 x 600 (48" x 24") | 4851ANL3524 |

SC-740/SC-800/DC-780

| Size mm (in) | Product Code |
|------------------------|--------------|
| 600 x 375 (24" x 15") | 2451AN7415 |
| 600 x 375 (24" x 15") | 2451ANL7415 |
| 600 x 600 (24" x 24") | 2451AN7424 |
| 600 x 600 (24" x 24") | 2451ANL7424 |
| 750 x 375 (30" x 15") | 3051AN7415 |
| 750 x 600 (30" x 24") | 3051AN7424 |
| 750 x 600 (30" x 24") | 3051ANL7424 |
| 900 x 375 (36" x 15") | 3651AN7415 |
| 900 x 600 (36" x 24") | 3651AN7424 |
| 1050 X 375 (42" x 15") | 4251AN7415 |
| 1050 X 600 (42" x 24") | 4251AN7424 |
| 1050 X 600 (42" x 24") | 4251ANL7424 |
| 1200 x 375 (48" x 15") | 4851AN7415 |
| 1200 x 600 (48" x 24") | 4851AN7424 |

MC-4500/MC-7200

| Size mm (in) | Product Code |
|------------------------|--------------|
| 750 x 600 (30" x 24") | 3051AN4524 |
| 750 x 600 (30" x 24") | 3051ANL4524 |
| 900 x 600 (36" x 24") | 3651AN4524 |
| 900 x 600 (36" x 24") | 3651ANL4524 |
| 1050 X 600 (42" x 24") | 4251AN4524 |
| 1050 X 600 (42" x 24") | 4251ANL4524 |
| 1200 x 600 (48" x 24") | 4851AN4524 |
| 1200 x 600 (48" x 24") | 4851ANL4524 |



FLAMPS

| For Use With Chamber | Product Code |
|---------------------------|--------------|
| MC Series Chamber | MCFLAMP |
| SC-740, SC-800 and DC-780 | SC74024RAMP |
| SC-310 | SC31023RAMP |

Retention/Detention

Rainwater Harvesting

Rainwater Harvesting*

| Description | Diameter mm (in) | Length ft. (m) | Capacity gal (L) |
|-------------|------------------|----------------|------------------|
| N-12 | 900 (36") | 6 (20') | 737 (2,790) |
| | 1050 (42") | 6 (20') | 1,083 (4,100) |
| | 1200 (48") | 6 (20') | 1,489 (5,636) |
| | 1500 (60") | 6 (20') | 2,479 (9,384) |
| HP Storm | 900 (36") | 40' (12) | 1,477 (5,591) |
| | | 60' (18) | 2,215 (8,385) |
| | 1050 (42") | 40' (12) | 2,169 (8,199) |
| | | 60' (18) | 3,254 (12,318) |
| | 1200 (48") | 40' (12) | 2,982 (11,288) |
| | | 60' (18) | 4,474 (16,936) |
| | 1500 (60") | 40' (12) | 4,966 (18,798) |
| | | 60' (18) | 7,449 (28,198) |

* Rainwater Harvesting units are custom made, therefore no standard product codes are available.



N-12 Rainwater Harvesting



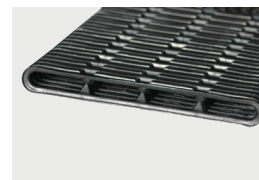
HP Storm Rainwater Harvesting

Panel Pipe

AdvanEdge®

Pipe

| Pipe Diameter mm (in) | Length m (ft.) | Description | Product Code |
|--------------------------|-------------------|------------------|--------------|
| 300 (12) | 30.5 (100) | No Fabric | 04900100 |
| | | 4.0 oz. Spunbond | 04930100 |



Fittings

| Pipe Size mm (in) | Fitting Description | Product Code |
|----------------------|---------------------------------|--------------|
| 300 mm (12) | Snap End Cap | 1432AA |
| 300 mm (12) | External Split Coupler | 1411AA |
| 300 mm (12) | Wye | 1480AA |
| 300 mm (12) | 100 mm (4") End Outlet | 1472AA |
| 300 mm (12) | Side Outlet | 1471AA |
| 100 mm (4) | 300 mm (12") Flat Outlet | 1473AN |
| 300 mm (12) | Fabricated Tee | 1460AN |
| 300 mm (12) | Fabricated Tee (Horizontal) | 1460ANH |
| 300 mm (12) | Fabricated Tee with Side Outlet | 1464ANH |
| 300 mm (12) | Fabricated Cross Tee | 1436ANH |
| 300 mm (12) | Fabricated Wye | 1480AN |
| 300 mm (12) | Fabricated Wye (Horizontal) | 1480ANH |
| 300 mm (12) | Fabricated Cross Wye | 1438ANH |



Snap End Cap



External Snap Coupler



Wye



End Outlet



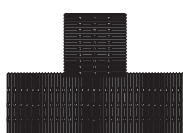
Side Outlet



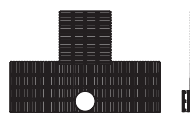
Flat Outlet



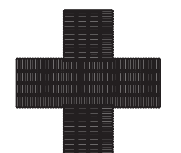
Fabricated Tee



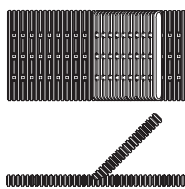
Fabricated Tee (Horizontal)



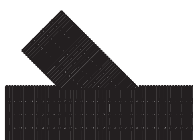
Fabricated Tee with Side Outlet



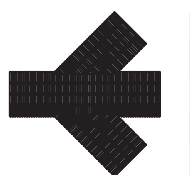
Fabricated Cross Tee



Fabricated Wye



Fabricated Wye Horizontal



Fabricated Cross Wye

Stormwater Treatment

Filters, Green Infrastructure

BayFilter Stormwater Media Filters

| Model | Diameter mm (in) | Treatment Flow Rate gpm (L/sec) | Treatment Volume m ³ (ft ³) | Filter Surface Area m ² (ft ²) | Product Code |
|---------------|------------------|---------------------------------|--|---|--------------|
| BayFilter 522 | 711 (28") | 1.42 (22.5) | 35.4 (1250) | 4.2 (45) | BAYFLTR-522 |
| BayFilter 530 | 711 (28") | 1.89 (30) | 70.8 (2500) | 8.4 (90) | BAYFLTR-530 |
| BayFilter 545 | 711 (28") | 2.84 (45) | 70.8 (2500) | 8.4 (90) | BAYFLTR-545 |
| BayFilter 622 | 711 (28") | 1.42 (22.5) | 35.4 (1250) | 4.2 (45) | BAYFLTR-622 |
| BayFilter 630 | 711 (28") | 1.89 (30) | 70.8 (2500) | 8.4 (90) | BAYFLTR-630 |
| BayFilter 645 | 711 (28") | 2.84 (45) | 70.8 (2500) | 8.4 (90) | BAYFLTR-645 |



EcoStream™ BioFilter

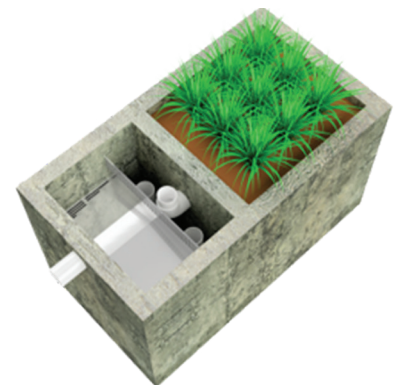
| Model | Treatment Rate L/s (cfs)* | Mass Capture Capacity kg (lb) | Sample Configuration m (ft) |
|-------|---------------------------|-------------------------------|---|
| ES16 | 4.2 (0.147) | 123 (271) | 1.2 x 1.2 (4 x 4) |
| ES24 | 6.3 (0.221) | 185 (407) | 1.2 x 1.8 (4 x 6) |
| ES32 | 8.3 (0.294) | 246 (542) | 1.2 x 2.4 (4 x 8) |
| ES36 | 9.4 (0.331) | 277 (610) | 1.8 x 1.8 (6 x 6) |
| ES40 | 10.4 (0.368) | 308 (678) | 1.2 x 3.0 (4 x 10) |
| ES48 | 12.5 (0.441) | 369 (813) | 1.2 x 3.6 (4 x 12) 1.8 x 2.4 (6 x 8) |
| ES60 | 15.6 (0.551) | 461 (1016) | 1.8 x 3.0 (6 x 10) |
| ES72 | 18.7 (0.662) | 553 (1220) | 1.8 x 3.6 (6 x 12) |
| ES80 | 20.8 (0.735) | 615 (1355) | 2.4 x 3.0 (8 x 10) |
| ES96 | 25.0 (0.882) | 738 (1626) | 2.4 x 3.6 (8 x 12) |
| ES112 | 29.1 (1.029) | 860 (1897) | 2.4 x 4.2 (8 x 14) |
| ES128 | 33.3 (1.176) | 983 (2168) | 2.4 x 4.8 (8 x 16) |

* Based on NJCAT/DEP filtration testing protocol.



EcoPure BioFilter®

| Model | Treatment Rate L/s (cfs) | Mass Capture Capacity kg (lb) |
|-------------|--------------------------|-------------------------------|
| EcoPure 60 | 3.8 (0.134) | 88 (194) |
| EcoPure 120 | 7.6 (0.27) | 176 (389) |
| EcoPure 180 | 11.3 (0.4) | 264 (583) |
| EcoPure 240 | 15.0 (0.53) | 353 (778) |
| EcoPure 360 | 22.7 (0.8) | 529 (1166) |

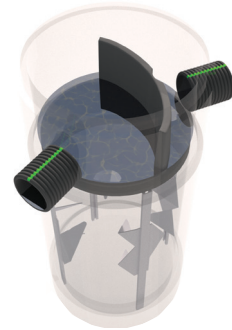


Stormwater Treatment

Separators

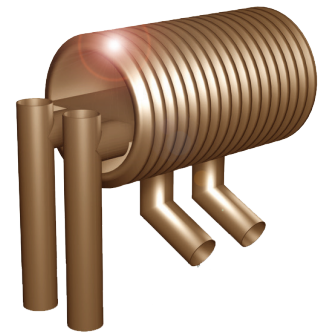
Barracuda Max Stormwater Separator

| Model | Manhole Diameter mm (in) | NJDEP (50% removal) | OK-100 (80% removal) |
|-------|-----------------------------|------------------------|-------------------------|
| S3 | 900 (36") | 24.1 (0.85) | 24.1 (0.85) |
| S4 | 1,200 (48") | 43.0 (1.52) | 43.0 (1.52) |
| S6 | 1,800 (72") | 96.2 (3.40) | 96.8 (3.42) |
| S8 | 2,400 (96") | 172.2 (6.08) | 172.2 (6.08) |



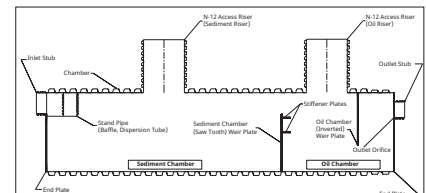
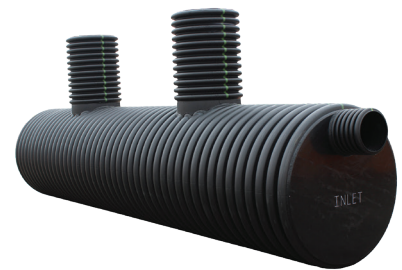
BaySeparator Stormwater Treatment System

| Model | Manhole Diameter mm (in) | Manhole Depth m (ft) | Maximum Treatment Rate L/s (cfs) | Maximum Hydraulic Rate L/s (cfs) | Product Code |
|---------------|-----------------------------|-------------------------|----------------------------------|----------------------------------|--------------|
| BayFilter ½K | 1,219 (48") | 1.8 (6') | 31.4 (1.1) | 241 (8.5) | BAYSEP00500 |
| BayFilter 1K | 1,219 (48") | 2.4 (8') | 68 (2.4) | 283 (10) | BAYSEP01000 |
| BayFilter 3K | 1,524 (60") | 2.4 (8') | 221 (7.8) | 850 (30) | BAYSEP03000 |
| BayFilter 5K | 1,829 (72") | 2.4 (8') | 314 (11.1) | 1,416 (50) | BAYSEP05000 |
| BayFilter 10K | 3,048 (120") | 2.4 (8') | 617 (21.8) | 2,832 (100) | BAYSEP10000 |
| BayFilter XK | Custom | Custom | Custom | Custom | BAYSYSXK |



Water Quality Unit*

| Diameter mm (in) | Length ft. (m) | Inlet Size mm (in) | Outlet Size mm (in) | Treated Flow Rate L/s (cfs) | Product Code |
|---------------------|-------------------|-----------------------|------------------------|-----------------------------|--------------|
| 900 (36") | 20' (6.0) | 250 (10") | 250 (10") | 42 (1.5) | 3620WQA |
| | 40' (12.1) | 250 (10") | 250 (10") | 67 (2.38) | 3640WQA |
| | 20' (6.0) | 250 (10") | 250 (10") | 20 (0.7) | 3620WQB |
| | 40' (12.1) | 250 (10") | 250 (10") | 45 (1.6) | 3640WQB |
| 1050 (42") | 20' (6.0) | 300 (12") | 300 (12") | 49 (1.79) | 4220WQA |
| | 40' (12.1) | 300 (12") | 300 (12") | 104 (3.66) | 4240WQA |
| | 20' (6.0) | 300 (12") | 300 (12") | 24 (0.86) | 4220WQB |
| | 40' (12.1) | 300 (12") | 300 (12") | 52 (1.83) | 4240WQB |
| 1200 (48") | 20' (6.0) | 300 (12") | 300 (12") | 64 (2.26) | 4820WQA |
| | 40' (12.1) | 300 (12") | 300 (12") | 112 (3.94) | 4840WQA |
| | 20' (6.0) | 300 (12") | 300 (12") | 32 (1.13) | 4820WQB |
| | 40' (12.1) | 300 (12") | 300 (12") | 68 (2.39) | 4840WQB |
| 1500 (60") | 20' (6.0) | 375 (15") | 375 (15") | 84 (2.95) | 6020WQA |
| | 40' (12.1) | 375 (15") | 375 (15") | 176 (6.23) | 6040WQA |
| | 20' (6.0) | 375 (15") | 375 (15") | 42 (1.47) | 6020WQB |
| | 40' (12.1) | 375 (15") | 375 (15") | 88 (3.12) | 6040WQB |



* Add two digit number at end of product code for bypass size. 00 at end of product code indicates no bypass.

Stormwater Treatment

FlexStorm Pure (Permanent) Inlet Filters

Round

| Clear Opening Dimensions mm (in) | Frame Material | FX Woven Bag | PCP Bag (+ Oil Pouch) |
|---|----------------|--------------|-----------------------|
| Small - 300-400 (12"-15") diameter openings | Stainless | 62SHDRFX | 62SHDRPCP |
| Medium - up to 600 (24") diameter openings | Stainless | 62MHDRFX | 62MHDRPCP |
| Large (up to 900 (36") diameter openings) | Stainless | 62LHDRFX | 62LHDRPCP |



Rectangular

| Clear Opening Dimensions mm (in) | Frame Material | FX Woven Bag | PCP Bag (+ Oil Pouch) |
|--|----------------|--------------|-----------------------|
| Small - 300 x 300 to 400 x 400 (12" x 12" to 15" x 15") openings or 1600 (64") perimeter | Stainless | 62SHDFX | 62SHDPCP |
| Medium - up to 600 x 600 (24" x 24") openings or 2400 (96") perimeter | Stainless | 62MHDFX | 62MHDPCP |
| Large - up to 900 x 600 (36" x 24") openings or 3000 (120") perimeter | Stainless | 62LHDFX | 62LHDPCP |
| XLarge - typical 2 piece set to fit up to 1200 x 900 (48" x 36") opening) | Stainless | 62XLHDFX | 62XLHDPCP |



Wall Mount for Open Throat Curb Inlets

| Clear Opening Dimensions m (ft) | Frame Material | FX Woven Bag | PCP Bag (+ Oil Pouch) |
|---|----------------|--------------|-----------------------|
| Between 0.3-1.22 (1'-4') curb openings (1 filter & mounting hardware) | Stainless | 62HDWM1FX | 62HDWM1PCP |
| Between 1.22-2.44 (4'-8') or single wing basins (2 filters & mounting hardware) | Stainless | 62HDWM2FX | 62HDWM2PCP |
| Between 2.44-3.66 (8'-12') or double wing basins (3 filters & mounting hardware) | Stainless | 62HDWM3FX | 62HDWM3PCP |
| Between 3.66-4.88 (12'-16') or 4-sided basin flow (4 filters & mounting hardware) | Stainless | 62HDWM4FX | 62HDWM4PCP |



Replacement Bags

| Bag Size (Round or Rectangle) | FX Woven Bag | PCP Bag (+ Oil Pouch) |
|-------------------------------|--------------|-----------------------|
| Small | 62SRBFX | 62SRBPCP |
| er Medium | 62MRBFX | 62MRBPCP |
| Large | 62LRBFX | 62LRBPCP |



Replacement Oil Skimmer Pouches

| Product | Product Code |
|---|--------------|
| Oil skimmer pouch with swivel hook/strap (20 per box) | 62CTSB |
| Oil skimmer 75 x 850 mm (3" x 34") for wall mounts (30 per box) | 62CTS34 |



Stormwater Treatment

FlexStorm Catch-It (Temporary) Inlet Filters

Round Inlet Filters with FX Woven Bag

| Clear Opening Dimensions mm (in) | Frame Material | Product Number |
|---|-----------------|----------------|
| Small - up to 300-400 (16") diameter openings | Zinc/Galvanized | 62SRDFX |
| Medium - up to 600 (24) diameter openings | Zinc/Galvanized | 62MRDFX |
| Large up to 900 (36) diameter openings | Zinc/Galvanized | 62LRDFX |



Rectangular Inlet Filters with FX Woven Bag

| Clear Opening Dimensions mm (in) | Frame Material | Product Number |
|--|-----------------|----------------|
| Small - 300 x 300 to 400 x 400 (12" x 12" to 15" x 15") openings or 1600 (64") perimeter | Zinc/Galvanized | 62SSQFX |
| Medium - up to 600 x 600 (24" x 24") openings or 2400 (96") perimeter | Zinc/Galvanized | 62MSQFX |
| Large - up to 900 x 600 (36" x 24") openings or 3000 (120") perimeter | Zinc/Galvanized | 62LSQFX |
| XLarge - typical 2 piece set to fit up to 1200 x 900 (48" x 36") opening | Zinc/Galvanized | 62XLSQFX |



Rectangular Curb Box with FX Woven Bag

| Clear Opening Dimensions | Frame Material | Product Number |
|--|-----------------|----------------|
| Small - 300 x 300 to 400 x 400 (12" x 12" to 15" x 15") openings or 1600 (64") perimeter | Zinc/Galvanized | 62SCBFX |
| Medium - up to 600 x 600 (24" x 24") openings or 2400 (96") perimeter | Zinc/Galvanized | 62MCBFX |
| Large - up to 900 x 600 (36" x 24") openings or 3000 (120") perimeter | Zinc/Galvanized | 62LCBFX |
| XLarge - typical 2 piece set to fit up to 1200 x 900 (48" x 36") opening | Zinc/Galvanized | 62XLCBFX |

Stormwater Treatment

FlexStorm Inlet Filters for Nyloplast Basins

Round Pure (Permanent) Inlet Filters

| Round Grate Sizes* mm (in) | FX Woven Bag | PCP Bag (+ Oil Pouch) |
|--------------------------------|--------------|--------------------------|
| 300 mm (12") Nyloplast Casting | 6212NYFX | 6212NYPCP |
| 375 mm (15") Nyloplast Casting | 6215NYFX | 6215NYPCP |
| 450 mm (18") Nyloplast Casting | 6218NYFX | 6218NYPCP |
| 600 mm (24") Nyloplast Casting | 6224NYFX | 6224NYPCP |
| 750 mm (30") Nyloplast Casting | 6230NYFX | 6230NYPCP |



Round Lite (Temporary) Inlet Filters

| Round Grate Sizes* mm (in) | Product Number |
|--------------------------------|----------------|
| 300 mm (12") Nyloplast Casting | 62LITENY12 |
| 375 mm (15") Nyloplast Casting | 62LITENY15 |
| 450 mm (18") Nyloplast Casting | 62LITENY18 |
| 600 mm (24") Nyloplast Casting | 62LITENY24 |
| 750 mm (30") Nyloplast Casting | 62LITENY30 |



* ADS Inlet Filter framing is designed for standard and pedestrian grate castings. Dome Grates and Drop-In Grates require special hanger kit. When ordering for rectangular road and highway or curb inlets, the filters will sit in the base plate of the castings. Some of these base castings require a transition plate to adapt to the standard 300-450 mm (12"-18") diameter ADS Inlet Filters. ADS customer service will identify the proper transition plates, which will ship with the inlet filter.

Maintenance Tool

| Product | Product Code |
|--------------------------------------|--------------|
| ADS Maintenance & Grate Removal Tool | 62UMT |

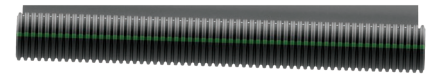
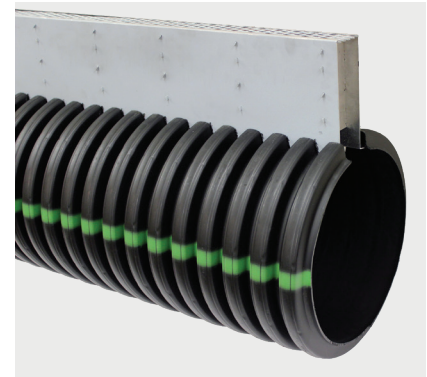


Linear Drains

Duraslot Slot Drain

Pipe

| Pipe Diameter mm (in) | Slot Height mm (in) | Product Code | |
|--------------------------|---|----------------------|---------------------|
| | | Galvanized Grate* | Open Top Grate** |
| 100 (4") | 64 (2.5") | 0420DS | 0420DSOT |
| | 150 (6") | 0460DS | 0460DSOT |
| | Variable (up to 600 (24") tall slot) | 0490DS | 0490DSOT |
| 150 (6") | 64 (2.5") | 0620DS | 0620DSOT |
| | 150 (6") | 0660DS | 0660DSOT |
| | Variable (up to 600 (24") tall slot) | 0690DS | 0690DSOT |
| 200 (8") | 64 (2.5") | 0820DS | 0820DSOT |
| | 150 (6") | 0860DS | 0860DSOT |
| | Variable (up to 600 (24") tall slot) | 0890DS | 0890DSOT |
| 250 (10") | 64 (2.5") | 1020DS | 1020DSOT |
| | 150 (6") | 1060DS | 1060DSOT |
| | Variable (up to 600 (24") tall slot) | 1090DS | 1090DSOT |
| 300 (12") | 64 (2.5") | 1220DS | 1220DSOT |
| | 150 (6") | 1260DS | 1260DSOT |
| | Variable (up to 600 (24") tall slot) | 1290DS | 1290DSOT |
| | Variable (600-900 (24"-36") tall slot) | 1290DSDT | 1290DSDTOT |
| 375 (15") | 150 (6") | 1560DS | 1560DSOT |
| | Variable (up to 600 (24") tall slot) | 1590DS | 1590DSOT |
| | Variable (600-900 (24"-36") tall slot) | 1590DSDT | 1590DSDTOT |
| 450 (18") | 150 (6") | 1860DS | 1860DSOT |
| | Variable (up to 600 (24") tall slot) | 1890DS | 1890DSOT |
| | Variable (600-900 (24"-36") tall slot) | 1890DSDT | 1890DSDTOT |
| 600 (24") | 150 (6") | 2460DS | 2460DSOT |
| | Variable (up to 600 (24") tall slot) | 2490DS | 2490DSOT |
| | Variable (600-900 (24"-36") tall slot) | 2490DSDT | 2490DSDTOT |
| 750 (30") | 150 (6") | 3060DS | 3060DSOT |
| | Variable (up to 600 (24") tall slot) | 3090DS | 3090DSOT |
| | Variable (600-900 (24"-36") tall slot) | 3090DSDT | 3090DSDTOT |
| 900 (36") | 150 (6") | 3660DS | 3660DSOT |
| | Variable (up to 600 (24") tall slot) | 3690DS | 3690DSOT |
| | Variable(600-900 (24"-36") tall slot) | 3690DSDT | 3690DSDTOT |



* Galvanized grate is ADS compliant and heel proof with 64% open area. Applications include: public street and highway, airports, loading docks, athletic facilities, parking lots and industrial floors.

**Open top is no grate with 1¾" opening with 100% open area. Applications include: public street and highway.

Linear Drains

Duraslot Slot Drain

Couplers*

| Pipe Diameter mm (in) | Fitting Compatible with Product Code | Product Code |
|--------------------------|---|--------------|
| 100 (4") | 0420DS | 0421DS |
| | 0460DS | 0426DS |
| | 0490DS | 0491DS |
| 150 (6") | 0620DS | 0621DS |
| | 0660DS | 0626DS |
| | 0690DS | 0691DS |
| 200 (8") | 0820DS | 0821DS |
| | 0860DS | 0821DS |
| | 0890DS | 0891DS |
| 250 (10") | 1020DS | 1021DS |
| | 1060DS | 1026DS |
| | 1090DS | 1091DS |
| 300 (12") | 1220DS | 1221DS |
| | 1260DS | 1226DS |
| | 1290DS/1290DSDT | 1291DS |
| 375 (15") | 1560DS | 1526DS |
| | 1590DS/1590DSDT | 1591DS |
| 450 (18") | 1860DS | 1826DS |
| | 1890DS/1890DSDT | 1891DS |
| 600 (24") | 2460DS | 2426DS |
| | 2490DS/2490DSDT | 2491DS |
| 750 (30") | 3060DS | 3026DS |
| | 3090DS/3090DSDT | 3091DS |
| 900 (36") | 3660DS | 3626DS |
| | 3690DS/3690DSDT | 3691DS |



* Coupler is needed for every Duraslot to Duraslot pipe or fabricated fitting connection.

ADS produces Duraslot elbows with typical bends (11.25°, 22.5°, 45° and 90°). Tees are available as mainline tees (slot across the mainline's top), drop tees (stub faces downward) or three branch slot (slot on all three branches). All elbows and tees use part #990DS, but please indicate pipe diameter and indicate the elbow or tee needed in the description.

Linear Drains

Duraslot Slot Drain

End Caps

| Pipe Diameter mm (in) | Fitting Compatible with Product Code | Product Code |
|--------------------------|---|--------------|
| 100 (4") | 0420DS/0460DS | 0433DS |
| | 0490DS | 0493DS |
| 150 (6") | 0620DS/0660DS | 0633DS |
| | 0690DS | 0693DS |
| 200 (8") | 0820DS/0860DS | 0833DS |
| | 0890DS | 0893DS |
| 250 (10") | 1020DS/1060DS | 1033DS |
| | 1090DS | 1093DS |
| 300 (12") | 1220DS/1260DS | 1233DS |
| | 1290DS/1290DSDT | 1293DS |
| 375 (15") | 1560DS | 1533DS |
| | 1590DS/1590DSDT | 1593DS |
| 450 (18") | 1860DS | 1833DS |
| | 1890DS/1890DSDT | 1893DS |
| 600 (24") | 2460DS | 2433DS |
| | 2490DS/2490DSDT | 2493DS |
| 750 (30") | 3060DS | 3033DS |
| | 3090DS/3090DSDT | 3093DS |
| 900 (36") | 3660DS | 3633DS |
| | 3690DS/3690DSDT | 3693DS |



Adapters

| Pipe Diameter mm (in) | Fitting Compatible with Product Code | Product Code |
|--------------------------|---|--------------|
| 100 (4") | 0420DS/0460DS | 0462DS |
| | 0490DS | 0496DS |
| 150 (6") | 0620DS/0660DS | 0662DS |
| | 0690DS | 0696DS |
| 200 (8") | 0820DS/0860DS | 0862DS |
| | 0890DS | 0896DS |
| 250 (10") | 1020DS/1060DS | 1062DS |
| | 1090DS | 1096DS |
| 300 (12") | 1220DS/1260DS | 1262DS |
| | 1290DS/1290DSDT | 1296DS |
| 375 (15") | 1560DS | 1562DS |
| | 1590DS/1590DSDT | 1596DS |
| 450 (18") | 1860DS | 1862DS |
| | 1890DS/1890DSDT | 1896DS |
| 600 (24") | 2460DS | 2462DS |
| | 2490DS/2490DSDT | 2496DS |
| 750 (30") | 3060DS | 3062DS |
| | 3090DS/3090DSDT | 3096DS |
| 900 (36") | 3660DS | 3662DS |
| | 3690DS/3690DSDT | 3696DS |



* Adapter is needed to transition from Duraslot to N-12, HP Storm and any concrete structure.

Linear Drains

Duraslot Slot Drain

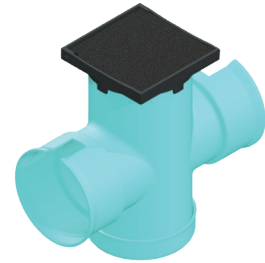
Nyloplast Tee for Duraslot Clean Out*

| Product Description mm (in) | Product Code |
|--|--------------|
| 300 (12") Tee with 300 (12") Solid Cover | 1265AGDS |
| 375 (15") Tee with 300 (12") Solid Cover | 1565AGDS |
| 450 (18") Tee with 300 (12") Solid Cover | 1865AGDS |
| 600 (24") Tee with 300 (12") Solid Cover | 2465AGDS |



Nyloplast Basin for Duraslot Clean Out*

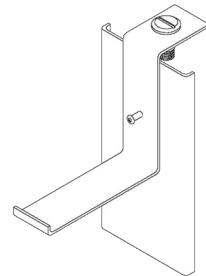
| Product Description mm (in) | Product Code |
|--|--------------|
| 300 (12") Basin with 300 (12") Solid Cover | 2812AG3 |
| 375 (15") Basin with 300 (12") Solid Cover | 2815AG3 |
| 450 (18") Basin with 300 (12") Solid Cover | 2818AG3 |
| 600 (24") Basin with 300 (12") Solid Cover | 2824AG3 |



Duraslot Grate Anchors

| Product Description mm (in) | Product Code |
|--|--------------|
| For 100 (4") Duraslot with 64 (2.5") Slot Height | GASDS |
| For 150-300 (6"-12") Duraslot with 64 (2.5") Slot Height | GAMDS |
| For 100-900 (4"-36") Duraslot with 150 (6") Slot Height | GALDS |

* For each Duraslot to Nyloplast connection, please quote a grate anchor.

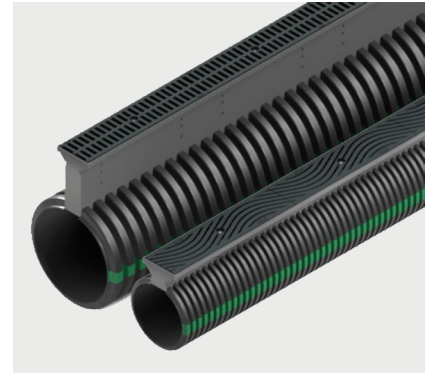


Linear Drains

Duraslot XL Trench Drain

Pipe

| Diameter mm (in) | Slot Height mm (in) | Product Code |
|---------------------|--|--------------|
| 150 (6") | 64 (2.5") | 0620DSXL |
| | 150 (6") | 0660DSXL |
| | Variable (up to 600 (24") tall slot) | 0690DSXL |
| 200 (8") | 64 (2.5") | 0820DSXL |
| | 150 (6") | 0860DSXL |
| | Variable (up to 600 (24") tall slot) | 0890DSXL |
| 250 (10") | 64 (2.5") | 1020DSXL |
| | 150 (6") | 1060DSXL |
| | Variable (up to 600 (24") tall slot) | 1090DSXL |
| 300 (12") | 64 (2.5") | 1220DSXL |
| | 150 (6") | 1260DSXL |
| | Variable (up to 600 (24") tall slot) | 1290DSXL |
| | Variable (600-900 (24"-36") tall slot) | 1290DSDTXL |
| 375 (15") | 150 (6") | 1560DSXL |
| | Variable (up to 600 (24") tall slot) | 1590DSXL |
| | Variable (600-900 (24"-36") tall slot) | 1590DSDTXL |
| 450 (18") | 150 (6") | 1860DSXL |
| | Variable (up to 600 (24") tall slot) | 1890DSXL |
| | Variable (600-900 (24"-36") tall slot) | 1890DSDTXL |
| 600 (24") | 150 (6") | 2460DSXL |
| | Variable (up to 600 (24") tall slot) | 2490DSXL |
| | Variable (600-900 (24"-36") tall slot) | 2490DSDTXL |
| 750 (30") | 150 (6") | 3060DS |
| | Variable (up to 600 (24") tall slot) | 3090DSXL |
| | Variable (600-900 (24"-36") tall slot) | 3090DSDTXL |
| 900 (36") | 150 (6") | 3660DSXL |
| | Variable (up to 600 (24") tall slot) | 3690DSXL |
| | Variable(600-900 (24"-36") tall slot) | 3690DSDTXL |



Linear Drains

Duraslot XL Trench Drain

Grates

| Grate Type mm (in) | Product Code |
|---------------------------------|--------------|
| 125 x 500 (5" x 20") Standard | 0520XLDIS |
| 125 x 500 (5" x 20") Pedestrian | 0520XLDIW |

* Grates fit all diameters of Duraslot XL pipe.



Standard Grate



Pedestrian Grate

Couplers**

| Pipe Diameter mm (in) | Fitting Compatible with Product Code | Product Code |
|-----------------------|--------------------------------------|--------------|
| 150 (6") | 0620DSXL/0660DSXL/0690DSXL | 0691DSXL |
| 200 (8") | 0820DSXL/0860DSXL/0890DSXL | 0891DSXL |
| 250 (10") | 1020DSXL/1060DSXL/1090DSXL | 1091DSXL |
| 300 (12") | 1220DSXL/1260DSXL/ 1290DSXL | 1291DSXL |
| 375 (15") | 1560DSXL/1590DSXL | 1591DSXL |
| 450 (18") | 1860DSXL/1890DSXL | 1891DSXL |
| 600 (24") | 2460DSXL/2490DSXL | 2491DSXL |
| 750 (30") | 3060DSXL/3090DSXL | 3091DSXL |
| 900 (36") | 3660DSXL/3690DSXL | 3691DSXL |



** Coupler is needed for every Duraslot to Duraslot pipe or fabricated fitting connection.

ADS produces Duraslot elbows with typical bends (11.25°, 22.5°, 45° and 90°). Tees are available as mainline tees (slot across the mainline's top), drop tees (stub faces downward) or three branch slot (slot on all three branches). All elbows and tees use part #990DS, but please indicate pipe diameter and indicate the elbow or tee needed in the description.

Linear Drains

Duraslot XL Trench Drain

End Caps

| Pipe Diameter mm (in) | Fitting Compatible with Product Code | Product Code |
|--------------------------|---|--------------|
| 150 (6") | 0620DSXL/0660DSXL | 0633DSXL |
| | 0690DSXL | 0693DSXL |
| 200 (8") | 0820DSXL/0860DSXL | 0833DSXL |
| | 0890DSXL | 0893DSXL |
| 250 (10") | 1020DSXL/1060DSXL | 1033DSXL |
| | 1090DSXL | 1093DSXL |
| 300 (12") | 1220DSXL/1260DSXL | 1233DSXL |
| | 1290DSXL | 1293DSXL |
| 375 (15") | 1560DSXL | 1533DSXL |
| | 1590DSXL | 1593DSXL |
| 450 (18") | 1860DSXL | 1833DSXL |
| | 1890DSXL | 1893DSXL |
| 600 (24") | 2460DSXL | 2433DSXL |
| | 2490DSXL | 2493DSXL |
| 750 (30") | 3060DSXL | 3033DSXL |
| | 3090DSXL | 3093DSXL |
| 900 (36") | 3660DSXL | 3633DSXL |
| | 3690DSXL | 3693DSXL |



Adapters

| Pipe Diameter mm (in) | Fitting Compatible with Product Code | Product Code |
|--------------------------|---|--------------|
| 150 (6") | 0620DSXL/0660DSXL | 0662DSXL |
| | 0690DSXL | 0696DSXL |
| 200 (8") | 0820DSXL/0860DSXL | 0862DSXL |
| | 0890DSXL | 0896DSXL |
| 250 (10") | 1020DSXL/1060DSXL | 1062DSXL |
| | 1090DSXL | 1096DSXL |
| 300 (12") | 1220DSXL/1260DSXL | 1262DSXL |
| | 1290DSXL | 1296DSXL |
| 375 (15") | 1560DSXL | 1562DSXL |
| | 1590DSXL | 1596DSXL |
| 450 (18") | 1860DSXL | 1862DSXL |
| | 1890DSXL | 1896DSXL |
| 600 (24") | 2460DSXL | 2462DSXL |
| | 2490DSXL | 2496DSXL |
| 750 (30") | 3060DSXL | 3062DSXL |
| | 3090DSXL | 3096DSXL |
| 900 (36") | 3660DSXL | 3662DSXL |
| | 3690DSXL | 3696DSXL |



* Adapter is needed to transition from Duraslot to N-12, HP Storm and any concrete structure.

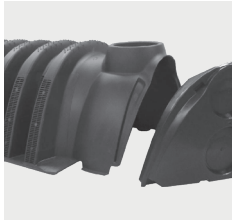
Onsite Wastewater Systems

Arc & Biodiffuser Chambers & Accessories

Arc Chambers*



Arc 18



Arc 24



Arc 36



Arc 36HC



Arc 36LP

| Type | Dimensions L x W x H mm (in) | Capacity m ³ (ft ³) | Product Code |
|----------|---------------------------------------|--|--------------|
| Arc 18 | 1,702 x 406 x 300 (67" x 16" x 12") | 0.10 (3.42) | 1812BD |
| Arc 24 | 1,702 x 572 x 300 (67" x 22.5" x 12") | 0.14 (5.02) | 2412BD |
| Arc 36 | 1,600 x 876 x 330 (63" x 34.5" x 13") | 0.23 (8.0) | 3613BD3 |
| Arc 36HC | 1,600 x 876 x 400 (63" x 34.5" x 16") | 0.30 (10.7) | 3616BD3 |
| Arc 36LP | 1,600 x 864 x 200 (63" x 34" x 8") | 0.17 (5.84) | 3608BD |

* All Arc chambers have a load rating of H-10.

Arc End Caps, Port Couplers, Splash Plate



End Cap



Side Port Coupler

| Type | Product Code |
|----------------------------|--------------|
| Arc 18 End Cap | 1802BD |
| Arc 24 End Cap | 2402BD |
| Arc 36 End Cap | 3603BD2 |
| Arc 36HC End Cap | 3606BD3 |
| Arc 36LP End Cap | 3624LPEC |
| Arc 24 Side Port Coupler | 2403BD |
| Arc 36 Side Port Coupler | 3604BD |
| Arc 36HC Side Port Coupler | 3607BD |
| End Cap Splash Plate | 0068 |

Onsite Wastewater Systems

Biodiffuser Chambers/Accessories & Septic Stack

Biodiffuser Chambers



1600BD



1620BD

| Type mm (in) | Load Rating | Dimensions L x W x H mm (in) | Capacity m ³ (ft ³) | Product Code |
|-----------------------|-------------|-------------------------------------|--|--------------|
| 400 (16") Hi Capacity | H-10 | 1,930 x 863 x 400 (76" x 34" x 16") | 0.39 (13.6) | 1600BD |
| 400 (16") Hi Capacity | H-20 | 1,930 x 863 x 400 (76" x 34" x 16") | 0.39 (13.6) | 1620BD |

Biodiffuser End Caps, Angle Section



1601BD



1622BD

| Type mm (in) | Product Code |
|-------------------------------|--------------|
| 400 (16") End Cap | 1601BD |
| 400 (16") Angle Section 0-22° | 1622BD |

Septic Stack Systems



9 Pipe Septic Stack

| Description mm (in) | Nominal Length m (ft) | Product Code |
|---|-----------------------|--------------|
| 100 (4") Perforated 9 Pipe | 3 (10') | 04710090 |
| 100 (4") Perforated 11 Pipe | 3 (10') | 04710110 |
| 100 (4") Perforated 13 Pipe | 3 (10') | 04710130 |
| 3611 System of 100 (4") Perforated Pipe | 3 (10') | 04710110 |
| 3613 System of 100 (4") Perforated Pipe | 3 (10') | 04710130 |

Onsite Wastewater Systems

Accessories

Distribution Boxes

| Description | Product Code |
|---|--------------|
| Multi-Purpose Regular Distribution Box | 1369AB |
| Multi-Purpose Hillside Distribution Box | 1370AB |
| Regular Distribution Box Plug | 1379AB |
| Hillside Distribution Box Plug | 1380AB |



1369AB



1370AB

Bull Run Valve



| Description mm (in) | Product Code |
|-----------------------------------|--------------|
| Bull Run Valve with 600 (24") Key | 4182FG |



Sewage Ejector Sump

| Description mm (in) | Product Code |
|---|--------------|
| Lid Kit for Sewage Ejector Sump and Radon Vented Sump | 1530ADLX |



Foundation Drainage

Sump Liners & Lids; Waterstop Gaskets

Sump Liner

| Description L (gal) | Dimensions mm (in) | Product Code |
|---|-----------------------|--------------|
| 53 (14) Sump Liner | 450 x 600 (18" x 24") | 1524ADH |
| 72 (19) Locking Sump Liner | 450 x 750 (18" x 30") | 1530ADH |
| 53 (14) Radon Dual Purpose Vented Liner | 450 x 600 (18" x 24") | 1524ADR |



1524ADH



1530ADH



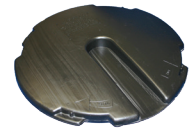
1524ADR

Sump Liner Lid

| Description | Dimensions mm (in) | Product Code |
|-------------------------|--------------------|--------------|
| Solid, Locking | 450 (18") | 1537ADL |
| Notched, Locking | 450 (18") | 1537ADNL |
| Center Notched, Locking | 450 (18") | 1537ADCNL |



1537ADL



1537ADNL



1537ADCNL

Waterstop Gaskets

| Pipe Size mm (in) | Recommended Minimum Hole Diameter mm (in) | Minimum Distance Pipe Invert to Structure Invert mm (in) | Product Code |
|-------------------|---|--|--------------|
| 300 (12") | 495 (19.50") | 94 (3.7") | 1202PS |
| 375 (15") | 584 (23.00") | 102 (4.0") | 1502PS |
| 450 (18") | 673 (26.50") | 107 (4.2") | 1802PS |
| 600 (24") | 845 (33.25") | 114 (4.5") | 2402PS |
| 750 (30") | 1,029 (40.50") | 132 (5.2") | 3002PS |
| 900 (36") | 1,194 (47.00") | 140 (5.5") | 3602PS |
| 1050 (42") | 1,346 (53.00") | 146 (5.75") | 4202PS |
| 1200 (48") | 1,499 (59.00") | 146 (5.75") | 4802PS |
| 1350 (54")* | 1,651 (65.00") | 163 (6.4") | 5402PS |
| 1500 (60") | 1,829 (72.00") | 163 (6.4") | 6002PS |



* Limited Geographic Availability.

Geosynthetics

Nonwoven

Light Weight Civil



| Weight oz (g) | Size width x length m (ft) | Roll Size m ² (y ²) | Product Code |
|---------------|----------------------------|--|--------------|
| 3.0 (85) | 0.91 x 109.7 (3.0' x 360') | 100 (120) | 0311TA |
| | 1.2 x 109.7 (4.0' x 360') | 134 (160) | 0311TB |
| | 1.5 x 109.7 (5.0' x 360') | 167 (200) | 0311TD |
| | 1.9 x 109.7 (6.3' x 360') | 250 (209) | 0311TF |
| | 2.3 x 109.7 (7.5' x 360') | 300 (251) | 0311TT |
| | 3.8 x 109.7 (12.5' x 360') | 500 (418) | 0311TG |
| | 4.6 x 109.7 (15.0' x 360') | 600 (502) | 0311TS |
| 3.5 (99) | 0.91 x 109.7 (3.0' x 360') | 100 (120) | 0351TA |
| | 1.2 x 109.7 (4.0' x 360') | 134 (160) | 0351TB |
| | 1.5 x 109.7 (5.0' x 360') | 167 (200) | 0351TD |
| | 1.9 x 109.7 (6.3' x 360') | 250 (209) | 0351TF |
| | 2.3 x 109.7 (7.5' x 360') | 300 (251) | 0351TT |
| | 3.8 x 109.7 (12.5' x 360') | 500 (418) | 0351TG |
| | 4.6 x 109.7 (15.0' x 360') | 600 (502) | 0351TS |
| 4.0 (113) | 0.91 x 109.7 (3.0' x 360') | 100 (120) | 0401TA |
| | 1.2 x 109.7 (4.0' x 360') | 134 (160) | 0401TB |
| | 1.5 x 109.7 (5.0' x 360') | 167 (200) | 0401TD |
| | 1.9 x 109.7 (6.3' x 360') | 250 (209) | 0401TF |
| | 2.3 x 109.7 (7.5' x 360') | 300 (251) | 0401TT |
| | 3.8 x 109.7 (12.5' x 360') | 500 (418) | 0401TG |
| | 4.6 x 109.7 (15.0' x 360') | 600 (502) | 0401TS |
| 4.5 (128) | 0.91 x 109.7 (3.0' x 360') | 100 (120) | 0451TA |
| | 1.2 x 109.7 (4.0' x 360') | 134 (160) | 0451TB |
| | 1.5 x 109.7 (5.0' x 360') | 167 (200) | 0451TD |
| | 1.9 x 109.7 (6.3' x 360') | 250 (209) | 0451TF |
| | 2.3 x 109.7 (7.5' x 360') | 300 (251) | 0451TT |
| | 3.8 x 109.7 (12.5' x 360') | 500 (418) | 0451TG |
| | 4.6 x 109.7 (15.0' x 360') | 600 (502) | 0451TS |
| 5.0 (141) | 3.8 x 109.7 (12.5' x 360') | 500 (418) | 0551TG |
| | 4.6 x 109.7 (15.0' x 360') | 600 (502) | 0551TS |



Geosynthetics

Nonwoven

Medium Weight Civil



| Weight oz (g) | Size width x length m (ft) | Roll Size m ² (y ²) | Product Code |
|---------------|----------------------------|--|--------------|
| 6.0 (170) | 0.91 x 109.7 (3.0' x 360') | 100 (120) | 0601TA |
| | 1.2 x 109.7 (4.0' x 360') | 134 (160) | 0601TB |
| | 1.5 x 109.7 (5.0' x 360') | 167 (200) | 0601TD |
| | 1.9 x 109.7 (6.3' x 360') | 209 (250) | 0601TF |
| | 2.3 x 109.7 (7.5' x 360') | 251 (300) | 0601TT |
| | 3.8 x 109.7 (12.5' x 360') | 418 (500) | 0601TG |
| | 4.6 x 91.4 (15.0' x 300') | 418 (500) | 0601TS |
| 7.0 (198) | 0.91 x 109.7 (3.0' x 360') | 100 (120) | 0701TA |
| | 1.2 x 109.7 (4.0' x 360') | 134 (160) | 0701TB |
| | 1.5 x 109.7 (5.0' x 360') | 167 (200) | 0701TD |
| | 1.9 x 109.7 (6.3' x 360') | 209 (250) | 0701TF |
| | 2.3 x 109.7 (7.5' x 360') | 251 (300) | 0701TT |
| | 3.8 x 109.7 (12.5' x 360') | 418 (500) | 0701TG |
| | 4.6 x 91.4 (15.0' x 300') | 418 (500) | 0701TS |
| 8.0 (227) | 3.8 x 109.7 (12.5' x 360') | 418 (500) | 0801TG |
| | 4.6 x 91.4 (15.0' x 300') | 418 (500) | 0801TS |



Heavy Weight



| Weight oz (g) | Size width x length m (ft) | Roll Size m ² (y ²) | Product Code |
|---------------|----------------------------|--|--------------|
| 10.0 (283) | 4.6 x 91.4 (15.0' x 300') | 418 (500) | 1001TS |
| 12.0 (340) | 4.6 x 91.4 (15.0' x 300') | 418 (500) | 1201TS |
| 16.0 (454) | 4.6 x 91.4 (15.0' x 300') | 418 (500) | 1601TS |

Environmental



| Weight oz (g) | Size width x length m (ft) | Roll Size m ² (y ²) | Product Code |
|---------------|----------------------------|--|--------------|
| 6.5 (184) | 4.6 x 274 (15.0' x 900') | 1,254 (1,500) | 0651TS |
| 8.0 (227) | 4.6 x 210 (15.0' x 690') | 962 (1,150) | 0861TS |
| 10.0 (283) | 4.6 x 91.4 (15.0' x 300') | 418 (500) | 1071TS |
| 12.0 (340) | 4.6 x 146 (15.0' x 480') | 669 (800) | 1291TS |
| 17.0 (482) | 4.6 x 110 (15.0' x 360') | 502 (600) | 1701TS |

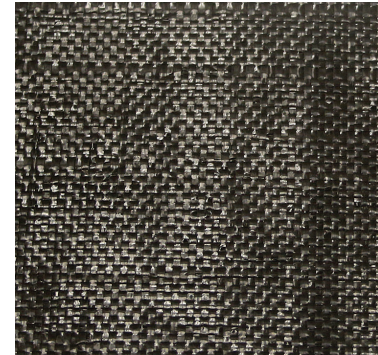
Geosynthetics

Woven

Stabilization



| Grab Tensile | Size width x length m (ft) | Roll Size m ² (y ²) | Product Code |
|--------------|----------------------------|--|--------------|
| 200 | 3.8 x 131.7 (12.5' x 432') | 502 (600) | 200WTK |
| | 4.6 x 109.7 (15.0' x 360') | 502 (600) | 200WTS |
| | 5.3 x 94.2 (17.5' x 309') | 502 (600) | 200WTM |
| 250 | 3.8 x 109.7 (12.5' x 360') | 418 (500) | 250WTK |
| | 4.6 x 109.7 (15.0' x 360') | 502 (600) | 250WTS |
| | 5.3 x 78.6 (17.5' x 258') | 418 (500) | 250WTM |
| 270 | 3.8 x 109.7 (12.5' x 360') | 418 (500) | 270WTK |
| | 4.6 x 91.4 (15' x 300') | 418 (500) | 270WTS |
| | 5.3 x 78.6 (17.5' x 258') | 418 (500) | 270WTM |
| 315 | 3.8 x 109.7 (12.5' x 360') | 418 (500) | 315WTK |
| | 4.6 x 91.4 (15' x 300') | 418 (500) | 315WTS |
| | 5.3 x 78.6 (17.5' x 258') | 418 (500) | 315WTM |
| | 3.8 x 109.7 (2.5' x 360') | 418 (500) | 315WTK |



Monofilament



| Size width x length m (ft) | Roll Size m ² (y ²) | Product Code |
|----------------------------|--|--------------|
| 3.6 x 91.4 (12.0' x 300') | 334 (400) | 104FWF |
| 3.8 x 91.4 (12.5' x 300') | 348 (417) | 111FTK |
| 3.6 x 91.4 (12.0' x 300') | 334 (400) | 117FTK |

Medium



| Size width x length m (ft) | Roll Size m ² (y ²) | Product Code |
|----------------------------|--|--------------|
| 4.6 x 91.4 (15' x 300') | 418 (500) | 2x2 |
| 4.6 x 91.4 (15' x 300') | 418 (500) | 270HPTS |
| 5.3 x 78.6 (17.5' x 258') | 418 (500) | 270HPTM |
| 5.3 x 78.6 (17.5' x 258') | 418 (500) | 370HPTS |
| 4.6 x 91.4 (15' x 300') | 418 (500) | 570HPTS |

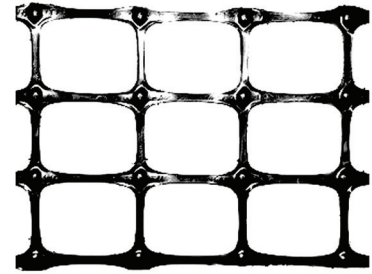
Geosynthetics

Geogrid, Paving Fabric & Silt Fence

Biaxial



| Size width x length m (ft) | Roll Size m ² (y ²) | Product Code |
|----------------------------|--|--------------|
| 12.5' x 328' (3.8 x 100) | 380 (455) | BX114 |
| 12.5' x 246' (3.8 x 75) | 286 (342) | BX124 |
| 12.5' x 328' (3.8 x 100) | 380 (455) | BX224 |
| 12.5' x 164' (3.8 x 50) | 190 (228) | BX154 |
| 12.5' x 164' (3.8 x 50) | 190 (228) | BX150 |
| 12.5' x 328' (3.8 x 100) | 380 (455) | BX1515 |
| 12.5' x 164' (3.8 x 50) | 190 (228) | BX374 |



Paving Fabric



| Size width x length m (ft) | Roll Size m ² (y ²) | Product Code |
|----------------------------|--|--------------|
| 12.5' x 360' (3.8 x 109.7) | 418 (500) | 4598TG |
| 15.0' x 360' (4.6 x 109.7) | 502 (600) | 4598TS |
| 12.5' x 360' (3.8 x 109.7) | 418 (500) | 4599TG |
| 15.0' x 360' (4.6 x 109.7) | 502 (600) | 4599TS |



Silt Fence



| Description m (ft) | Product Code |
|--|--------------|
| .6 x 30 (2' x 100') roll with 11 hardwood stakes | 3301WE |
| .9 x 30 (3' x 100') roll with 11 hardwood stakes | 3302WE |
| .9 x 30 (3' x 100') AASHTO M288 Silt Fence with 17 hardwood stakes | 3302WP |



3301WE



3301WP

Geosynthetics

Erosion Control Blankets, Turf Reinforcement Mat, Ground Protection

Erosion Control Blanket



| Size width x length m (ft) | Roll Size m ² (y ²) | Description | Product Code |
|----------------------------|--|------------------------------|--------------|
| 2.4 x 34.3 (8' x 112.5') | 84 (100) | Single Net Straw | OOS1TT |
| 2.4 x 34.3 (8' x 112.5') | 84 (100) | Double Net Straw | 00S2TT |
| 2.4 x 34.3 (8' x 112.5') | 84 (100) | Coconut/Straw | OCS2TT |
| 2.4 x 34.3 (8' x 112.5') | 84 (100) | 100% Coconut | OOC2TT |
| 2.4 x 34.3 (8' x 112.5') | 84 (100) | Single net straw all natural | OOS1AN |
| 2.4 x 34.3 (8' x 112.5') | 84 (100) | Double net straw all natural | OOS2AN |
| 2.4 x 34.3 (8' x 112.5') | 84 (100) | Coconut/Straw all natural | OCS2AN |
| 2.4 x 34.3 (8' x 112.5') | 84 (100) | 100% Coconut all natural | OOC2AN |



OOS1TT,
OOS2TT

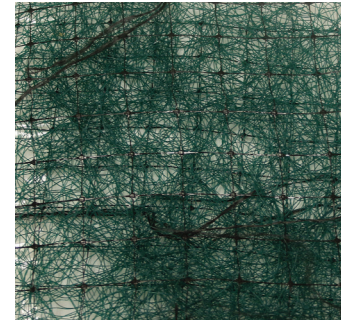


OOC2TT

Long-Term Turf Reinforcement Mat



| Size width x length m (ft) | Roll Size m ² (y ²) | Product Code |
|----------------------------|--|--------------|
| 2.4 x 34.1 (8' x 112') | 84 (100) | PP58GTR |
| 2.4 x 34.1 (8' x 112') | 84 (100) | PP510GTR |
| 2.4 x 34.1 (8' x 112') | 84 (100) | PP512GTR |



Permanent Turf Reinforcement Mat



| Size width x length m (ft) | Roll Size m ² (y ²) | Product Code |
|----------------------------|--|--------------|
| 2.4 x 41 (8' x 135') | 100 (120) | PP5XGTR |
| 2.4 x 41 (8' x 135') | 100 (120) | PP5HDGTR |

Fabric Pins



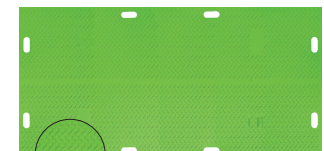
| Size in (mm) | Quantity | Product Code |
|----------------|----------|--------------|
| 50 (6") Staple | 1000/box | 3206TP |
| 300 (12") Pin | 100/box | 3212TP |
| 450 (18") Pin | 100/box | 3218TP |



Ground Protection Mat



| Size width x length m (ft) | Product Code |
|----------------------------|--------------|
| 0.6 x 2.4 (2' x 8') | BAM28 |
| 1.2 x 2.4 (4' x 8') | BAM48 |



Pedestrian Side



Equipment Side

Geosynthetics

Septic Fabric

Spunbond



| Weight g (oz) | Size width x length m (ft) | Roll Size m ² (y ²) | Product Code |
|---------------|----------------------------|--|--------------|
| 43 (1.5) | .9 x 91.4 (3.0' x 300') | 84 (100) | 3151TA |
| | 1.2 x 91.4 (4.0' x 300') | 111 (133) | 3151TB |
| | 1.9 x 91.4 (6.3' x 300') | 174 (208) | 3151TE |
| | 3.8 x 91.4 (12.6' x 300') | 351 (420) | 3151TG |
| 57 (2.0) | .9 x 91.4 (3.0' x 300') | 84 (100) | 3201TA |
| | 1.9 x 91.4 (6.3' x 300') | 174 (208) | 3201TE |
| | 1.2 x 91.4 (4.0' x 300') | 111 (133) | 3201TB |
| | 3.8 x 91.4 (12.6' x 300') | 351 (420) | 3201TG |
| 85 (3.0) | .9 x 91.4 (3.0' x 300') | 84 (100) | 3301TA |
| | 1.2 x 91.4 (4.0' x 300') | 111 (133) | 3301TB |
| | 1.9 x 91.4 (6.3' x 300') | 174 (208) | 3301TE |
| | 2.7 x 91.4 (9.0' x 300') | 247 (300) | 3301TT |
| | 3.8 x 91.4 (12.6' x 300') | 351 (420) | 3301TG |
| 113 (4.0) | 3.8 x 91.4 (12.6' x 300') | 351 (420) | 3401TG |
| | 4.8 x 91.4 (15.6' x 300') | 435 (520) | 3401TH |
| 170 (6.0) | 1.2 x 91 (3.8' x 300') | 351 (420) | 3601TG |
| | 4.8 x 91 (15.6' x 300') | 435 (520) | 3601TH |



Septic Fabric



| Weight oz. (g) | Size width x length m (ft) | Roll Size m ² (y ²) | Product Code |
|----------------|----------------------------|--|--------------|
| 0.5 (14) | .9 x 91.4 (3.0' x 300') | 84 (100) | 2636RB |
| | .9 x 457.2 (3.0' x 1500') | 418 (500) | 2736RB |
| | 1.2 x 457.2 (4.0' x 1500') | 558 (667) | 2748RB |
| | 1.5 x 457.2 (5.0' x 1500') | 696 (833) | 2760RB |
| | 1.8 x 457.2 (6.0' x 1500') | 836 (1,000) | 2772RB |
| 0.7 (20) | .9 x 91.4 (3.0' x 300') | 84 (100) | 2836RB |
| | .9 x 457.2 (3.0' x 1500') | 418 (500) | 2936RB |
| | 1.2 x 457.2 (4.0' x 1500') | 558 (667) | 2948RB |
| | 1.8 x 457.2 (6.0' x 1500') | 836 (1,000) | 2972RB |





ADS "Terms and Conditions of Sale" are available on the ADS website, www.adspipe.com.
Advanced Drainage Systems, the ADS logo, the Green Stripe, ADS 3000 TripleWall®, Duraslot®, N-12®, SaniTite® HP, MEGA GREEN™ and ADS PolyFlex™ are registered trademarks of Advanced Drainage Systems, Inc. Flexstorm® and Catch-It® are registered trademarks of Inlet & Pipe Protection, Inc. StormTech® is a registered trademark of StormTech, Inc. Inserta Tee® is a registered trademark of Inserta Fittings, Inc. Nyloplast® and EnviroHood™ are registered trademarks of Nyloplast, Inc. Arc™ and Biodiffuser® are registered trademarks of ISI. Hickenbottom® is a registered trademark of Hickenbottom, Inc. Mar Mac® is a registered trademark of Mar Mac Construction Products Co., Inc.
© 2024 Advanced Drainage Systems, Inc. #10524_C 12/24 MH

adspipe.com

800-821-6710

