

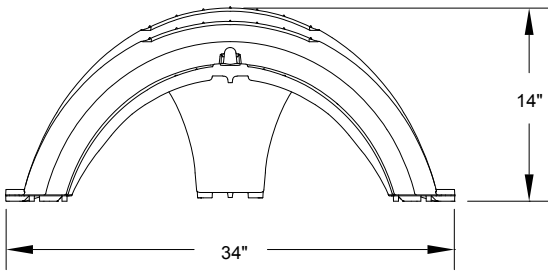
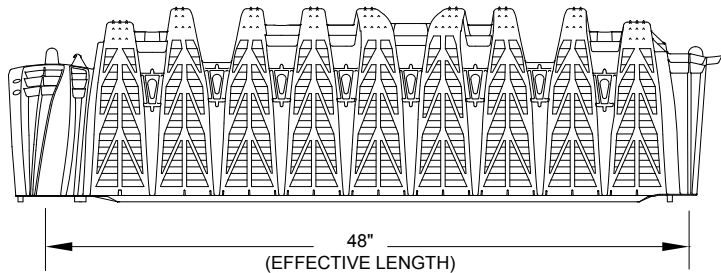
Quick4 Plus High Capacity Chambers in New Mexico



The Infiltrator Quick4 Plus High Capacity chamber offers superior strength through its center structural columns. This chamber is approved by the NMED for use in New Mexico when used in conjunction with the Quick4 Plus All-in-One 12 Endcap and the Quick4 Plus All-in-One Periscope. This configuration provides the proper inletting invert elevation required under the approval.



Quick4 Plus High Capacity Chamber
SIDE AND END VIEWS



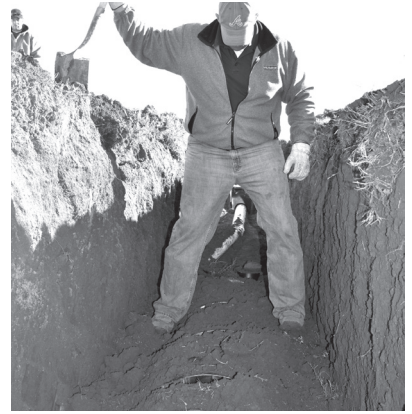
Nominal Chamber Specifications	
Size (W x L x H)	34" x 53" x 14"
Effective length	48"
Total chamber absorption area	19.3 ft ²
Absorption area per linear foot	4.8 ft ² /lf
Storage	54 gal/7.2 ft ³
Trench Spacing (edge-to-edge)	4 ft

Quick4 Plus High Capacity Chamber Sizing Chart

			TWO BEDROOMS		THREE BEDROOMS		FOUR BEDROOMS		FIVE BEDROOMS	
Soil Type	Soil Texture	Application Are Reqt. (ft ² /gal/day)	Area Required (ft ²)	Chambers Required	Area Required (ft ²)	Chambers Required	Area Required (ft ²)	Chambers Required	Area Required (ft ²)	Chambers Required
Ia	coarse sand	1.25	375	20	469	25	563	30	657	35
Ib	medium sand, loamy sand	2	600	32	750	39	900	47	1,050	55
II	sandy loam, fine sand, loam									
III	silt, silty loam, clay loam, silty clay loam, sandy clay loam									
IV	sandy clay, silty clay, clay	5	1,500	78	1,875	98	2,250	117	2,625	137

Installing a Quick4 Plus High Capacity Chamber System

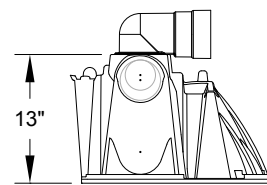
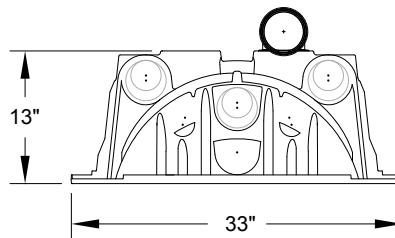
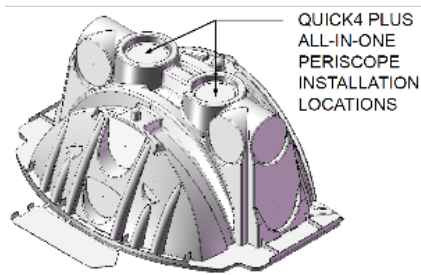
The Infiltrator Quick4 Plus High Capacity chamber can be installed in trenches, beds and alternative configurations. Installation instructions for chambers in New Mexico are available by request and illustrate the requirements for site excavation and preparation, attaching end caps and splash plates, chamber installation, fill placement, inspection ports and covering the system. Please note that inspection ports can be installed in the top of the Quick4 Plus High Capacity chamber or the Quick4 Plus-All-in-One 12 Endcap. Also remember to consolidate the fill against the chamber sides by walking on the soil between the chamber louvers and the trench sidewall.



Walking in the fill along the trench edges

Quick4 Plus All-in-One 12 Endcap and Quick4 Plus All-in-One Periscope

ISOMETRIC, END AND SIDE VIEWS



The Quick4 Plus All-in-One 12 Endcap may be used at the end of a chamber row or in-line with chambers. The in-line feature allows construction of chamber rows with a center feed, as an option to inletting at the ends of the chamber rows. Pipe connection is through the top of the end cap by using the Quick4 Plus All-in-One Periscope, which snaps into the end cap to create a permanent connection for the inlet pipe. The Quick4 Plus All-in-One Periscope can rotate 360 degrees to facilitate system inletting.

Installing the Quick4 Plus All-in-One Periscope in the Quick4 Plus All-in-One 12 Endcap

1. With a 4.25"-diameter hole saw drill the pre-marked area on top of the Quick4 Plus All-in-One 12 Endcap.
2. Insert the Quick4 Plus All-in-One Periscope into the drilled hole on top of the end cap.
3. Insert a 4" PVC pipe into the Quick4 Plus All-in-One Periscope.
4. Rotate the Quick4 Plus All-in-One Periscope to the desired angle.

