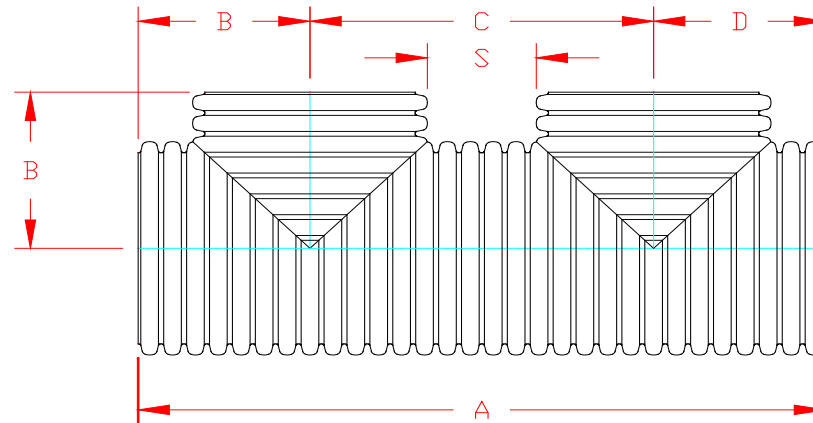


**HP STORM DUAL WALL FABRICATED "SOIL TIGHT" "PLAIN END"
DOUBLE MANIFOLD 36" - 60" DIAMETER**

PART #	PIPE SIZE	A	B	C	D	S
3652ANP	36 in (900 mm)	126.0 in (3201 mm)	31.5 in (800 mm)	63.0 in (1601 mm)	31.5 in (800 mm)	21.5 in (546 mm)
4252ANP	42 in (1050 mm)	135.9 in (3451 mm)	34.0 in (863 mm)	67.9 in (1725 mm)	34.0 in (863 mm)	20.5 in (522 mm)
4852ANP	48 in (1200 mm)	157.9 in (4010 mm)	39.5 in (1003 mm)	78.9 in (2005 mm)	39.5 in (1003 mm)	24.8 in (629 mm)
6052ANP	60 in (1500 mm)	181.5 in (4609 mm)	45.4 in (1152 mm)	90.7 in (2305 mm)	45.4 in (1152 mm)	23.6 in (600 mm)



NOTE: ALL FITTINGS DIMENSIONS ARE FOR REFERENCE ONLY



DRAWING #:	13075	
DRAWN BY:	TJR	10/13/2016
APPROVED BY:		
REVISIONS:		