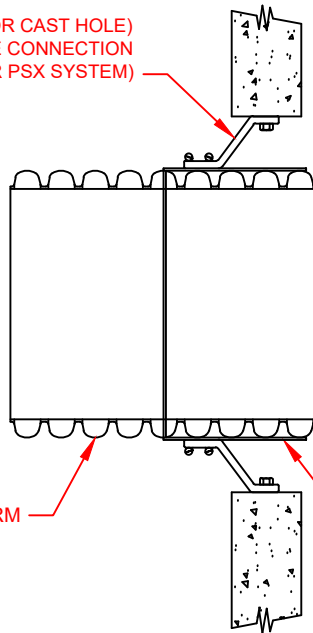


BOOTED (CORED OR CAST HOLE) RESILIENT STRUCTURE CONNECTION 12"-24" DUAL WALL HP STORM W/ FABRICATED MH ADAPTER

BOOTED (CORED OR CAST HOLE)
RESILIENT STRUCTURE CONNECTION
(KOR-N-SEAL OR PSX SYSTEM)



DUAL WALL HP STORM

FABRICATED MANHOLE ADAPTER

PREFABRICATED MANHOLE ADAPTER W/SMOOTH EXTERIOR

PIPE SIZE	ADS ADAPTER GASKET	PRESS SEAL® SYSTEMS *	TRELLEBORG	
			KOR-N-SEAL® *	
			SERIES I OR II	SERIES 306
12" (300mm)	1222ANBP	18M OR 20Y	S106-20BWS	N/A
15" (375mm)	1522ANBP	22L	S106-20WS	S306-22
18" (450mm)	1822ANBP	26L	S206-26	S306-26
24" (600mm)	2422ANBP	32A	S206-32	S306-32L

* THIRD PARTY - CODES AS SUPPLIED BY MANUFACTURER
KOR-N-SEAL is a registered trademark of NPC, Inc. (www.npc.com)
CAST-A-SEAL is a registered trademark of PRESS-SEAL GASKET CORPORATION. (www.press-seal.com)
A-LOK is a registered trademark of A-LOK Products, Inc. (www.a-lok.com)

CONTACT AN ADS REPRESENTATIVE FOR CUSTOM ADAPTERS

NOTES:

PERFORMANCE HIGHLY DEPENDENT ON INSTALLATION. CONTRACTOR MUST ENSURE MANHOLE GASKET IS UNIFORMLY SEATED AROUND STRUCTURE ADAPTER. EXTRA PRECAUTIONS MUST BE TAKEN TO PREVENT DIFFERENTIAL SETTLEMENT BETWEEN THE PIPE AND MANHOLE.

THE CAST-A-SEAL CONNECTION IS FOR USE WITH SQUARE MANHOLES ONLY.

SEE STANDARD DETAIL STD-201 AND TECHNICAL NOTE: 5.04 CONNECTIONS TO MANHOLES AND STRUCTURES FOR INSTALLATION RECOMMENDATIONS.

4	RENAMED & MODIFIED ADAPTER & TABLE	AMT	09-09-19		
REV.	DESCRIPTION	BY	MM/DD/YY	CHKD	

© 2019 ADS, INC.

ADVANCED DRAINAGE SYSTEMS, INC. ("ADS") HAS PREPARED THIS DETAIL BASED ON INFORMATION PROVIDED TO ADS. THIS DRAWING IS INTENDED TO DEPICT THE COMPONENTS AS REQUESTED. ADS HAS NOT PERFORMED ANY ENGINEERING OR DESIGN SERVICES FOR THIS PROJECT, NOR HAS ADS INDEPENDENTLY VERIFIED THE INFORMATION SUPPLIED. THE INSTALLATION DETAILS PROVIDED HEREIN ARE GENERAL RECOMMENDATIONS AND ARE NOT SPECIFIC FOR THIS PROJECT. THE DESIGN ENGINEER SHALL REVIEW THESE DETAILS PRIOR TO CONSTRUCTION. IT IS THE DESIGN ENGINEERS RESPONSIBILITY TO ENSURE THE DETAILS PROVIDED HEREIN MEETS OR EXCEEDS THE APPLICABLE NATIONAL, STATE, OR LOCAL REQUIREMENTS AND TO ENSURE THAT THE DETAILS PROVIDED HEREIN ARE ACCEPTABLE FOR THIS PROJECT.

12"-24" HP STORM BOOTED (CORED OR CAST HOLE)
STRUCTURE CONNECTION W/ FABRICATED ADAPTER

DRAWING NUMBER: STD-207F



4640 TRUEMAN BLVD
HILLIARD, OHIO 43026

DRAWN BY	CKM
DATE	2/23/10
CHKD BY	
SCALE	NTS
SHEET	1 OF 1