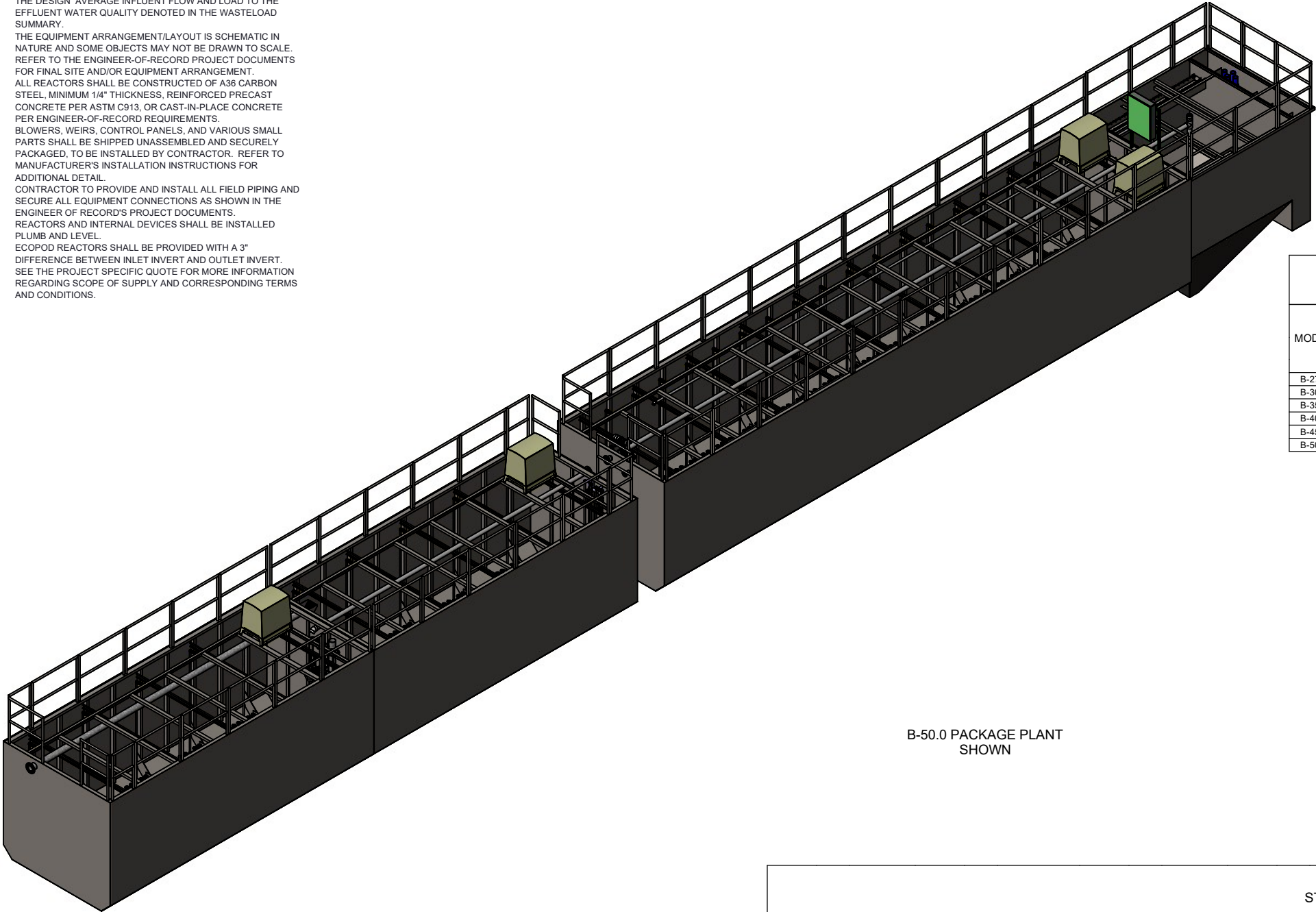


- GENERAL ARRANGEMENT NOTES
- THESE DRAWINGS DEPICT PRELIMINARY LAYOUT(S) OF A WASTEWATER TREATMENT SYSTEM CAPABLE OF TREATING THE DESIGN AVERAGE INFLUENT FLOW AND LOAD TO THE EFFLUENT WATER QUALITY DENOTED IN THE WASTELOAD SUMMARY.
 - THE EQUIPMENT ARRANGEMENT/LAYOUT IS SCHEMATIC IN NATURE AND SOME OBJECTS MAY NOT BE DRAWN TO SCALE. REFER TO THE ENGINEER-OF-RECORD PROJECT DOCUMENTS FOR FINAL SITE AND/OR EQUIPMENT ARRANGEMENT.
 - ALL REACTORS SHALL BE CONSTRUCTED OF A36 CARBON STEEL, MINIMUM 1/4" THICKNESS, REINFORCED PRECAST CONCRETE PER ASTM C913, OR CAST-IN-PLACE CONCRETE PER ENGINEER-OF-RECORD REQUIREMENTS.
 - BLOWERS, WEIRS, CONTROL PANELS, AND VARIOUS SMALL PARTS SHALL BE SHIPPED UNASSEMBLED AND SECURELY PACKAGED, TO BE INSTALLED BY CONTRACTOR. REFER TO MANUFACTURER'S INSTALLATION INSTRUCTIONS FOR ADDITIONAL DETAIL.
 - CONTRACTOR TO PROVIDE AND INSTALL ALL FIELD PIPING AND SECURE ALL EQUIPMENT CONNECTIONS AS SHOWN IN THE ENGINEER OF RECORD'S PROJECT DOCUMENTS.
 - REACTORS AND INTERNAL DEVICES SHALL BE INSTALLED PLUMB AND LEVEL.
 - ECOPOD REACTORS SHALL BE PROVIDED WITH A 3" DIFFERENCE BETWEEN INLET INVERT AND OUTLET INVERT.
 - SEE THE PROJECT SPECIFIC QUOTE FOR MORE INFORMATION REGARDING SCOPE OF SUPPLY AND CORRESPONDING TERMS AND CONDITIONS.



B-50.0 PACKAGE PLANT SHOWN

TABLE 1
PROCESS PARAMETERS

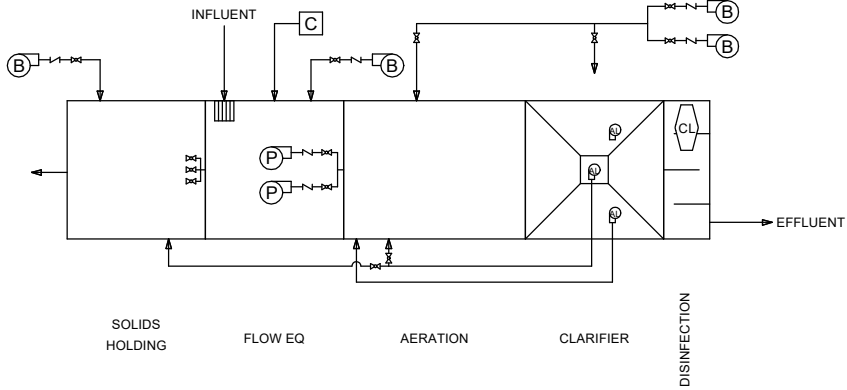
MODEL	AVG. DAILY FLOW		PEAK DAILY FLOW (PDF)	PEAK HOURLY FLOW (PHF)	INLFUENT BOD	AIR TEMP.	WATER TEMP.		RELATIVE HUMIDITY		SITE ELEV.
	MIN	MAX	MAX	MAX	MAX	MAX	MIN	MAX	MIN	MAX	MAX
B-27.5	13,750 (GPD)	41,250 (GPD)	55,000 (GPD)	110,000 (GPD)	45.9 (LB/D)	115°F	68°F	90°F	10%	90%	1,000 FT
B-30.0	15,000 (GPD)	45,000 (GPD)	60,000 (GPD)	120,000 (GPD)	50 (LB/D)	115°F	68°F	90°F	10%	90%	1,000 FT
B-35.0	17,500 (GPD)	52,500 (GPD)	70,000 (GPD)	140,000 (GPD)	58.4 (LB/D)	115°F	68°F	90°F	10%	90%	1,000 FT
B-40.0	20,000 (GPD)	60,000 (GPD)	80,000 (GPD)	160,000 (GPD)	66.7 (LB/D)	115°F	68°F	90°F	10%	90%	1,000 FT
B-45.0	22,500 (GPD)	67,500 (GPD)	90,000 (GPD)	180,000 (GPD)	75.1 (LB/D)	115°F	68°F	90°F	10%	90%	1,000 FT
B-50.0	25,000 (GPD)	75,000 (GPD)	100,000 (GPD)	200,000 (GPD)	83.4 (LB/D)	115°F	68°F	90°F	10%	90%	1,000 FT

TABLE 2
AIR DEMAND

PARAMETER	B-27.5	B-30.0	B-35.0	B-40.0	B-45.0	B-50.0
STANDARD AIRFLOW	202 SCFM	218 SCFM	249 SCFM	280 SCFM	311 SCFM	342 SCFM
SITE AIR REQ.	228 ICFM	245 ICFM	280 ICFM	315 ICFM	350 ICFM	385 ICFM
BLOWER INLET AIR	228 ICFM	245 ICFM	280 ICFM	315 ICFM	350 ICFM	385 ICFM
AIR HEADER SIZE	2.5"	2.5"	2.5"	4"	4"	4"
BLOWER SECTION	GARDNER DENVER		GARDNER DENVER		GARDNER DENVER	
BLOWER MODEL	4M	4M	4M	5M	5M	5M
NOISE LEVEL	83 dB(A)	84 dB(A)	86 dB(A)	84 dB(A)	85 dB(A)	86 dB(A)
AIR TEMP. RISE	73° F	72° F	70° F	72° F	70° F	69° F
BLOWER INLET DIAMETER	2.5" NPT	2.5" NPT	2.5" NPT	4" NPT	4" NPT	4" NPT
BLOWER OUTLET DIAMETER	2.5" NPT	2.5" NPT	2.5" NPT	4" NPT	4" NPT	4" NPT
MOTOR SELECTION	7.5 HP	10 HP	10 HP	10 HP	15 HP	15 HP
OPERATING POWER	5.4 kW	5.7 kW	6.3 kW	7.3 kW	8.0 kW	8.7 kW
FULL LOAD CURRENT	30.0 A @ 230V 1-PH 60 HZ 19.0/9.5 A @ 230/460V 3-PH 60HZ		41.5 A @ 230V 1-PH 60 HZ 25.0/12.5 A @ 230/460V 3-PH 60HZ		58.0 A @ 230V 1-PH 60 HZ 37.5/18.8 A @ 230/460V 3-PH 60HZ	

TABLE 3
STANDARD EQUIPMENT LIST

MODEL	FLOW EQ BLOWER			FLOW EQ DIFFUSERS			MAIN AIR BLOWER			AERATION DIFFUSERS			CHLORINE TABLET FEEDER			CONTROL PANEL			SOLIDS MIXING BLOWER			SOLIDS MIXING DIFFUSERS		
	QTY.	MAKE	MODEL	QTY.	MAKE	MODEL	QTY.	MAKE	MODEL	QTY.	MAKE	MODEL	QTY.	MAKE	MODEL	QTY.	MAKE	MODEL	QTY.	MAKE	MODEL	QTY.	MAKE	MODEL
B-27.5	1	GARDNER DENVER	4M	12	DIFFUSED GAS TECHNOLOGIES	DP-75	2	GARDNER DENVER	4M	44	DIFFUSED GAS TECHNOLOGIES	DP-75	1	NORWECO	XT4000	1	DELTA	PER DESIGN	1	GARDNER DENVER	4M	12	DIFFUSED GAS TECHNOLOGIES	DP-75
B-30.0	1	GARDNER DENVER	4M	12	DIFFUSED GAS TECHNOLOGIES	DP-75	2	GARDNER DENVER	4M	44	DIFFUSED GAS TECHNOLOGIES	DP-75	1	NORWECO	XT4000	1	DELTA	PER DESIGN	1	GARDNER DENVER	4M	12	DIFFUSED GAS TECHNOLOGIES	DP-75
B-35.0	1	GARDNER DENVER	4M	12	DIFFUSED GAS TECHNOLOGIES	DP-75	2	GARDNER DENVER	4M	52	DIFFUSED GAS TECHNOLOGIES	DP-75	1	NORWECO	XT4000	1	DELTA	PER DESIGN	1	GARDNER DENVER	4M	12	DIFFUSED GAS TECHNOLOGIES	DP-75
B-40.0	1	GARDNER DENVER	4M	16	DIFFUSED GAS TECHNOLOGIES	DP-75	2	GARDNER DENVER	4M	60	DIFFUSED GAS TECHNOLOGIES	DP-75	1	NORWECO	XT4000	1	DELTA	PER DESIGN	1	GARDNER DENVER	4M	16	DIFFUSED GAS TECHNOLOGIES	DP-75
B-45.0	1	GARDNER DENVER	4M	16	DIFFUSED GAS TECHNOLOGIES	DP-75	2	GARDNER DENVER	4M	68	DIFFUSED GAS TECHNOLOGIES	DP-75	1	NORWECO	XT4000	1	DELTA	PER DESIGN	1	GARDNER DENVER	4M	16	DIFFUSED GAS TECHNOLOGIES	DP-75
B-50.0	1	GARDNER DENVER	4M	20	DIFFUSED GAS TECHNOLOGIES	DP-75	2	GARDNER DENVER	4M	76	DIFFUSED GAS TECHNOLOGIES	DP-75	1	NORWECO	XT4000	1	DELTA	PER DESIGN	1	GARDNER DENVER	4M	20	DIFFUSED GAS TECHNOLOGIES	DP-75



PRELIMINARY

NO.	DATE	INITIALS	DESCRIPTION



INFILTRATOR WATER TECHNOLOGIES, LLC
4 BUSINESS PARK RD, OLD SAYBROOK, CT 06475
WWW.INFILTRATORWATER.COM
PHONE: (800) 221-4436 / EMAIL: INFO@INFILTRATORWATER.COM

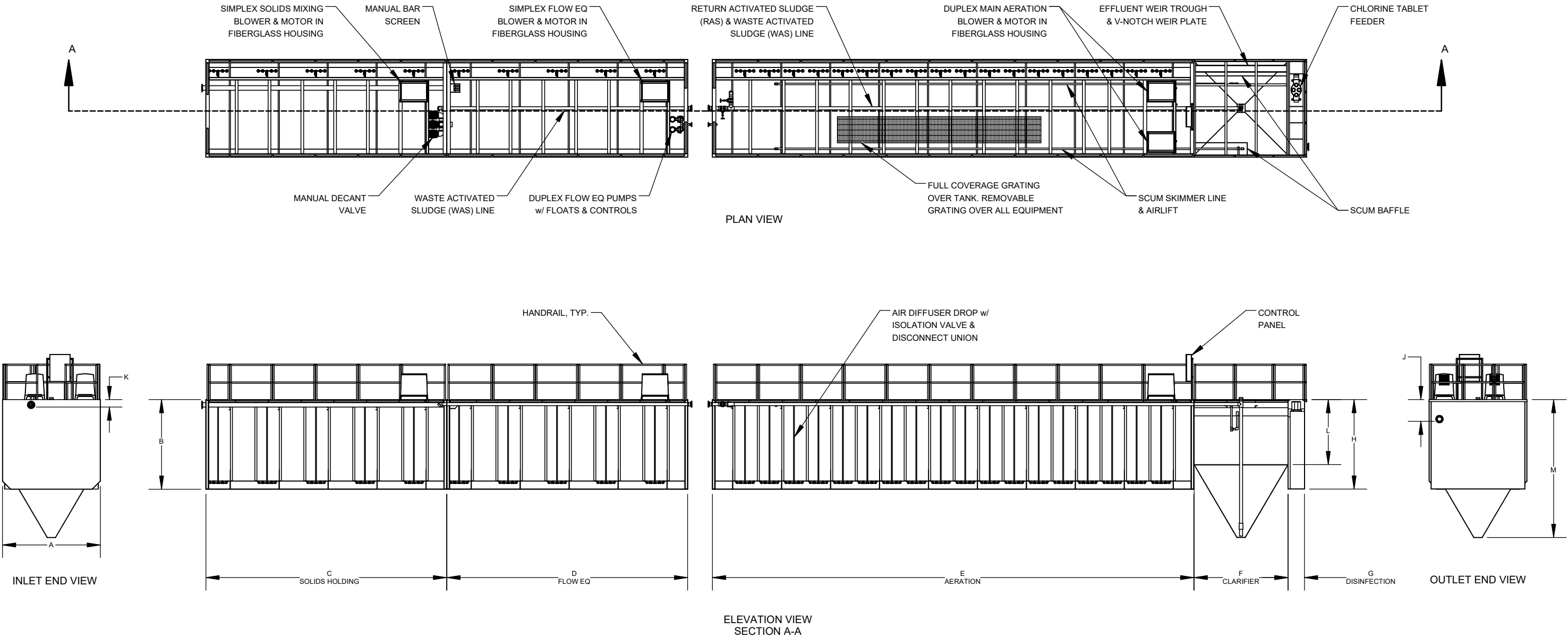
COPYRIGHT (C) 2025 INFILTRATOR WATER TECHNOLOGIES, LLC (IWT). INFORMATION CONTAINED HEREIN IS CONFIDENTIAL AND IS THE PROPERTY OF IWT. NO PART OF THIS DRAWING SHALL BE REPRODUCED, DISTRIBUTED, DISCLOSED, OR USED BY ANY PERSON OR ORGANIZATION, IN WHOLE OR IN PART, WITHOUT THE PRIOR WRITTEN PERMISSION OF IWT. THIS INFORMATION IS BASED ON SPECIFIC INPUT PARAMETERS AND IS FOR BUDGETARY OR PRELIMINARY USE ONLY. USE AND INTERPRETATION OF THIS INFORMATION AND DETERMINING THE APPLICABILITY TO A SPECIFIC PROJECT IS AT THE SOLE DISCRETION OF THE USER AND/OR THE ENGINEER OF RECORD.

ENVIRO-AIRE PACKAGE PLANT
B-27.5 THROUGH B-50.0

GENERAL ARRANGEMENT
DESIGN OVERVIEW

HORIZ. SCALE N/A	PROJECT NO. N/A
VERT. SCALE N/A	DATE 04/16/2025
DRAWN BY KJS	DESIGNED BY JLS
DRAWING NO. C1.0	SHEET NO. 01 of 02

TABLE 4 PACKAGE PLANT DIMENSIONS																				
MODEL	FLOW EQ VOLUME (GAL)	AERATION VOLUME (GAL)	CLARIFIER VOLUME (GAL)	CCT VOLUME (GAL)	SOLIDS HOLDING VOLUME (GAL)	A	B	C	D	E	F	G	H	J	K	L	M	SWD	INLET SIZE	OUTLET SIZE
B-27.5	14,323	28,287	4,733	724	14,323	12' - 0"	11' - 0"	16' - 6"	16' - 6"	33' - 0"	11' - 6"	2' - 0"	6' - 10"	2' - 6"	11"	4' - 0"	12' - 11"	9' - 6"	6"	6"
B-30.0	15,191	30,000	5,061	799	15,191	12' - 0"	11' - 0"	17' - 6"	17' - 6"	35' - 0"	11' - 6"	2' - 0"	7' - 2"	2' - 6"	11"	4' - 4"	13' - 3"	9' - 6"	6"	6"
B-35.0	17,795	35,144	5,879	942	17,795	12' - 0"	11' - 0"	20' - 6"	20' - 6"	41' - 0"	11' - 6"	2' - 0"	8' - 0"	2' - 6"	11"	5' - 2"	14' - 1"	9' - 6"	6"	6"
B-40.0	20,399	40,287	6,698	1,085	20,399	12' - 0"	11' - 0"	23' - 6"	23' - 6"	47' - 0"	11' - 6"	2' - 0"	9' - 0"	2' - 8"	11"	6' - 0"	14' - 10"	9' - 6"	6"	6"
B-45.0	23,003	45,430	7,680	1,424	23,003	12' - 0"	11' - 0"	26' - 6"	26' - 6"	53' - 0"	11' - 6"	2' - 0"	11' - 0"	2' - 8"	11"	7' - 0"	15' - 11"	9' - 6"	6"	6"
B-50.0	25,607	50,574	8,662	1,424	25,607	12' - 0"	11' - 0"	29' - 6"	29' - 6"	59' - 0"	11' - 6"	2' - 0"	11' - 0"	2' - 8"	11"	8' - 0"	16' - 11"	9' - 6"	6"	6"



PRELIMINARY

NO.	DATE	INITIALS	DESCRIPTION



INFILTRATOR WATER TECHNOLOGIES, LLC
4 BUSINESS PARK RD, OLD SAYBROOK, CT 06475
WWW.INFILTRATORWATER.COM
PHONE: (800) 221-4436 / EMAIL: INFO@INFILTRATORWATER.COM

COPYRIGHT (C) 2025 INFILTRATOR WATER TECHNOLOGIES, LLC (IWT). INFORMATION CONTAINED HEREIN IS CONFIDENTIAL AND IS THE PROPERTY OF IWT. NO PART OF THIS DRAWING SHALL BE REPRODUCED, DISTRIBUTED, DISCLOSED, OR USED BY ANY PERSON OR ORGANIZATION, IN WHOLE OR IN PART, WITHOUT THE PRIOR WRITTEN PERMISSION OF IWT. THIS INFORMATION IS BASED ON SPECIFIC INPUT PARAMETERS AND IS FOR BUDGETARY OR PRELIMINARY USE ONLY. USE AND INTERPRETATION OF THIS INFORMATION AND DETERMINING THE APPLICABILITY TO A SPECIFIC PROJECT IS AT THE SOLE DISCRETION OF THE USER AND/OR THE ENGINEER OF RECORD.

ENVIRO-AIRE PACKAGE PLANT B-27.5 THROUGH B-50.0		HORIZ. SCALE N/A	PROJECT NO. N/A
GENERAL ARRANGEMENT DIMENSIONS		VERT. SCALE N/A	DATE 04/16/2025
		DRAWN BY KJS	DESIGNED BY JLS
		DRAWING NO. C1.1	SHEET NO. 02 of 02