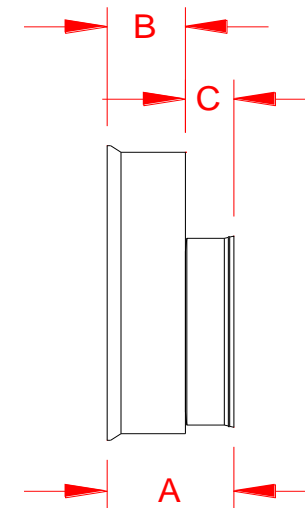


HP STORM DUAL WALL FABRICATED REDUCERS
15" x 12" - 24" x 18" DIAMETER (BELL\BELL)

PART #	PIPE SIZE	A	B	C	JOINT
1574AN65BP	15 x 12 in (375x 300 mm)	14.3 in (362 mm)	7.8 in (197 mm)	6.5 in (165 mm)	WT
1874AN65BP	18 x 12 in (450 x 300 mm)	15.4 in (391 mm)	8.9 in (226 mm)	6.5 in (165 mm)	WT
1875AN65BP	18 x 15 in (450 x 375mm)	16.6 in (422 mm)	8.9 in (2131 mm)	7.8 in (197 mm)	WT
2474AN65BP	24 x 12 in (600 x 300 mm)	13.5 in (343 mm)	7.0 in (178 mm)	6.5 in (165 mm)	WT
2475AN65BP	24 x 15 in (600 x 375 mm)	14.8 in (375 mm)	7.0 in (178 mm)	7.8 in (197 mm)	WT
2476AN65BP	24 x 18 in (600 x 450 mm)	15.9 in (403 mm)	7.0 in (178 mm)	8.9 in (226 mm)	WT



WT (INCLUDES 2 GASKETS)

NOTE: ALL FITTINGS DIMENSIONS ARE FOR REFERENCE ONLY

© 2021 Advanced Drainage Systems, Inc.

 Advanced Drainage Systems, Inc.	DRAWING #:	HP 12200
	DRAWN BY:	TJR 10/19/2009
	APPROVED BY:	
	REVISIONS:	TJR 5/13/2014