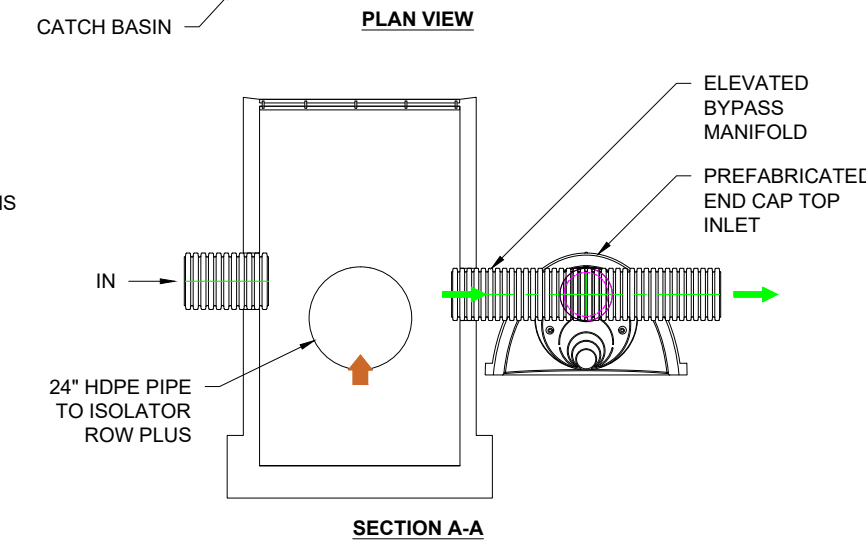
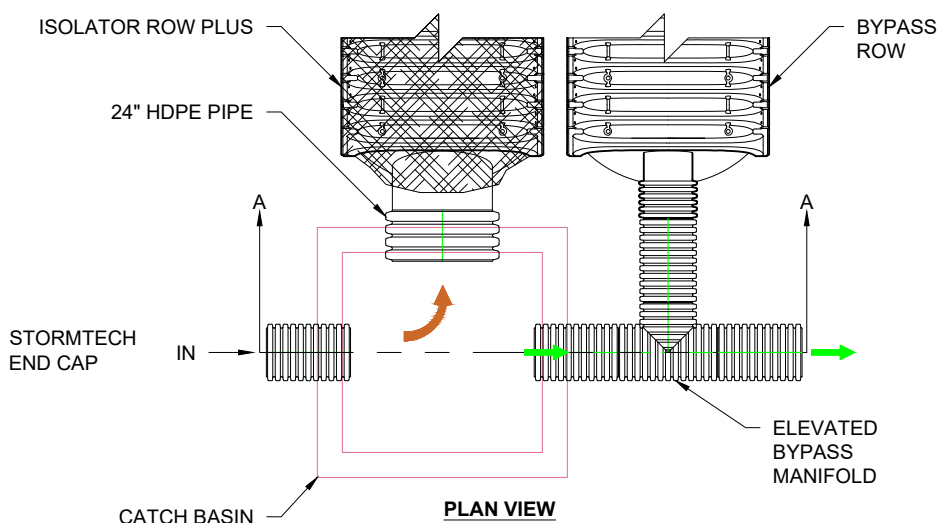


STORMTECH ISOLATOR ROW PLUS CROSS SECTION
NTS



STORMTECH ISOLATOR ROW PLUS BYPASS DETAILS
NTS

KEY BENEFITS OF STORMTECH

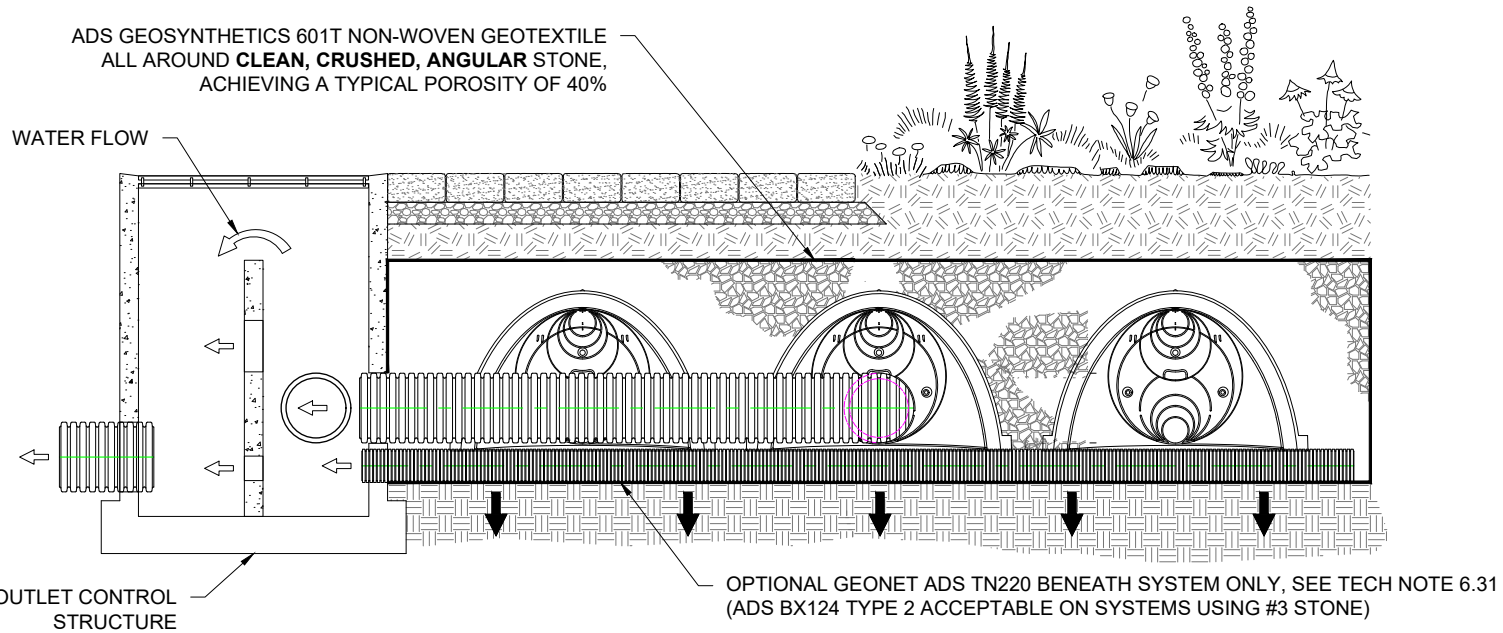
- VOLUME REDUCTION OF STORMWATER THROUGH INFILTRATION
- SIGNIFICANT PEAK FLOW ATTENUATION THROUGH EXTENDED DETENTION
- STORMWATER QUALITY THROUGH PATENTED ISOLATOR ROW
- THIRD PARTY VERIFIED PERFORMANCE
- EASILY CONSTRUCTED, INSPECTED AND MAINTAINED
- CERTIFIED ASTM & AASHTO PRODUCT STANDARDS & SPECIFICATIONS
- DISCHARGE TO DOWNSTREAM CONVEYANCE & SOME INFILTRATION

WATER QUALITY BENEFITS OF STORMTECH

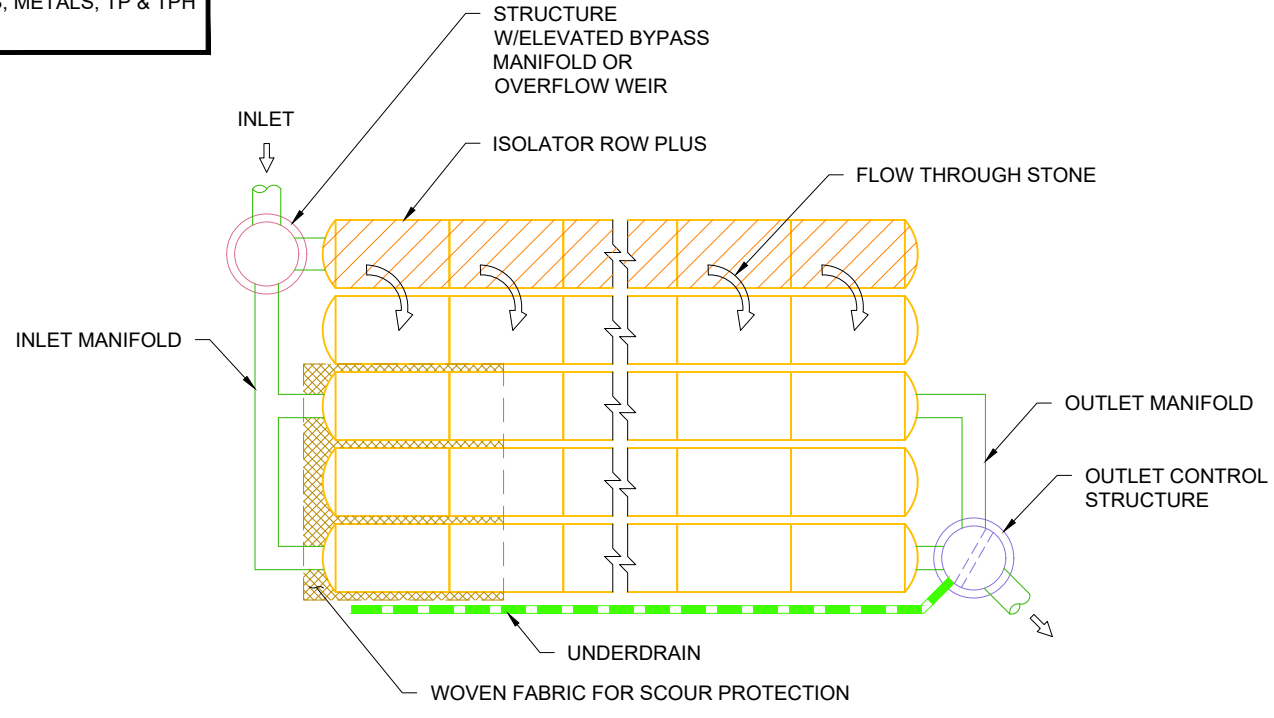
80% TSS REMOVAL AT OR BELOW GIVEN CFS PER CHAMBER:

- SC-160: 0.105
- SC-310: 0.165
- SC-740 / DC-780: 0.256
- MC-3500: 0.395
- MC-4500: 0.277

VOLUME REDUCTION OF STORMWATER THROUGH INFILTRATION
ISOLATOR ROW PLUS REMOVES TSS, TRASH & DEBRIS, METALS, TP & TPH
REDUCTION OF THERMAL IMPACTS



STORMTECH INFILTRATION DETAIL
NTS



STORMTECH ISOLATOR ROW PLUS SCHEMATIC
NTS

GREEN INFRASTRUCTURE DETAIL

| | | | |
|------------|------------|----------|-----|
| DATE: | 08/20/2020 | DRAWN: | AGC |
| PROJECT #: | | CHECKED: | GFI |

| DATE | DRWN | CHKD | DESCRIPTION |
|------|------|------|-------------|
| | | | |
| | | | |

StormTech

520 CROMWELL AVENUE | ROCKY HILL | CT | 06067
860-525-8188 | 1888-892-2694 | WWW.STORMTECH.COM

4640 TRUEMAN BLVD
HILLIARD, OH 43026

ADS
Advanced Drainage Systems, Inc.

THIS DRAWING HAS BEEN PREPARED BASED ON INFORMATION PROVIDED TO ADS UNDER THE DIRECTION OF THE SITE DESIGN ENGINEER OR OTHER PROJECT REPRESENTATIVE. THE SITE DESIGN ENGINEER SHALL REVIEW THIS DRAWING PRIOR TO CONSTRUCTION. IT IS THE ULTIMATE RESPONSIBILITY OF THE SITE DESIGN ENGINEER TO ENSURE THAT THE PRODUCT(S) DEPICTED AND ALL ASSOCIATED DETAILS MEET ALL APPLICABLE LAWS, REGULATIONS, AND PROJECT REQUIREMENTS.