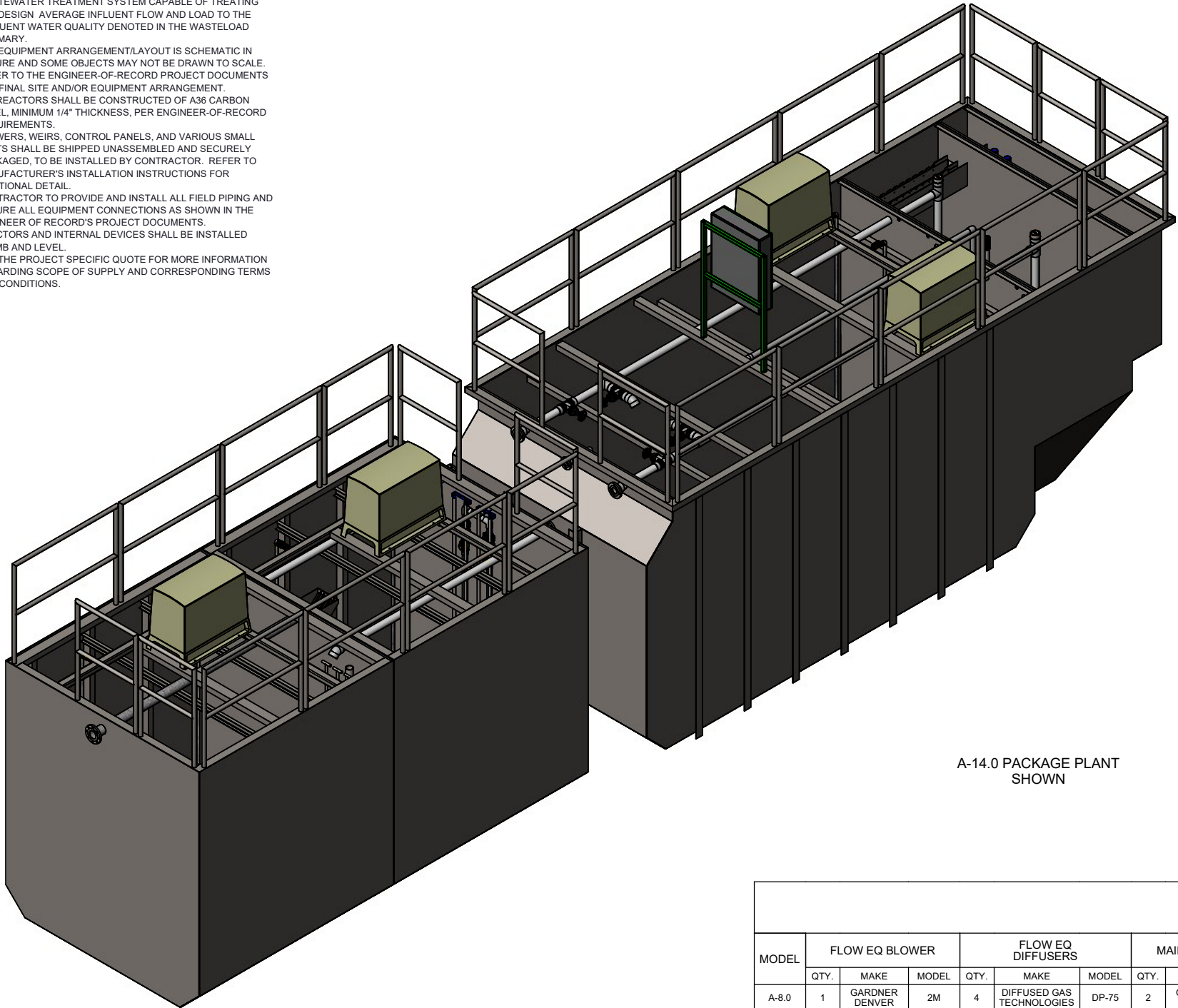


- GENERAL ARRANGEMENT NOTES
- THESE DRAWINGS DEPICT PRELIMINARY LAYOUT(S) OF A WASTEWATER TREATMENT SYSTEM CAPABLE OF TREATING THE DESIGN AVERAGE INFLUENT FLOW AND LOAD TO THE EFFLUENT WATER QUALITY DENOTED IN THE WASTeload SUMMARY.
 - THE EQUIPMENT ARRANGEMENT/LAYOUT IS SCHEMATIC IN NATURE AND SOME OBJECTS MAY NOT BE DRAWN TO SCALE. REFER TO THE ENGINEER-OF-RECORD PROJECT DOCUMENTS FOR FINAL SITE AND/OR EQUIPMENT ARRANGEMENT.
 - ALL REACTORS SHALL BE CONSTRUCTED OF A36 CARBON STEEL, MINIMUM 1/4" THICKNESS, PER ENGINEER-OF-RECORD REQUIREMENTS.
 - BLOWERS, WEIRS, CONTROL PANELS, AND VARIOUS SMALL PARTS SHALL BE SHIPPED UNASSEMBLED AND SECURELY PACKAGED, TO BE INSTALLED BY CONTRACTOR. REFER TO MANUFACTURER'S INSTALLATION INSTRUCTIONS FOR ADDITIONAL DETAIL.
 - CONTRACTOR TO PROVIDE AND INSTALL ALL FIELD PIPING AND SECURE ALL EQUIPMENT CONNECTIONS AS SHOWN IN THE ENGINEER OF RECORD'S PROJECT DOCUMENTS.
 - REACTORS AND INTERNAL DEVICES SHALL BE INSTALLED PLUMB AND LEVEL.
 - SEE THE PROJECT SPECIFIC QUOTE FOR MORE INFORMATION REGARDING SCOPE OF SUPPLY AND CORRESPONDING TERMS AND CONDITIONS.



A-14.0 PACKAGE PLANT SHOWN

TABLE 1
PROCESS PARAMETERS

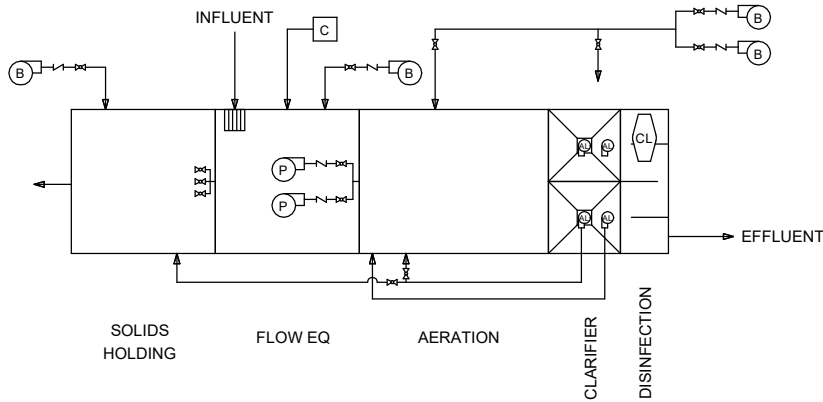
MODEL	AVG. DAILY FLOW		PEAK DAILY FLOW (PDF)	PEAK HOURLY FLOW (PHF)	INFLUENT BOD	AIR TEMP.	WATER TEMP.		RELATIVE HUMIDITY		SITE ELEV.
	MIN	MAX	MAX	MAX	MAX	MAX	MIN	MAX	MIN	MAX	MAX
A-8.0	4,000 (GPD)	12,000 (GPD)	16,000 (GPD)	32,000 (GPD)	13.3 (LB/D)	115° F	68° F	90° F	10%	90%	1,000 FT
A-9.0	4,500 (GPD)	13,500 (GPD)	18,000 (GPD)	36,000 (GPD)	15 (LB/D)	115° F	68° F	90° F	10%	90%	1,000 FT
A-10.0	5,000 (GPD)	15,000 (GPD)	20,000 (GPD)	40,000 (GPD)	16.7 (LB/D)	115° F	68° F	90° F	10%	90%	1,000 FT
A-11.0	5,500 (GPD)	16,500 (GPD)	22,000 (GPD)	44,000 (GPD)	18.3 (LB/D)	115° F	68° F	90° F	10%	90%	1,000 FT
A-12.0	6,000 (GPD)	18,000 (GPD)	24,000 (GPD)	48,000 (GPD)	20 (LB/D)	115° F	68° F	90° F	10%	90%	1,000 FT
A-13.0	6,500 (GPD)	19,500 (GPD)	26,000 (GPD)	52,000 (GPD)	21.7 (LB/D)	115° F	68° F	90° F	10%	90%	1,000 FT
A-14.0	7,000 (GPD)	21,000 (GPD)	28,000 (GPD)	56,000 (GPD)	23.4 (LB/D)	115° F	68° F	90° F	10%	90%	1,000 FT

TABLE 2
AIR DEMAND

PARAMETER	A-8.0	A-9.0	A-10.0	A-11.0	A-12.0	A-13.0	A-14.0
STANDARD AIRFLOW	94 SCFM	101 SCFM	107 SCFM	113 SCFM	119 SCFM	116 SCFM	121 SCFM
SITE AIR REQ.	105 ICFM	113 ICFM	121 ICFM	127 ICFM	134 ICFM	130 ICFM	137 ICFM
BLOWER INLET AIR	105 ICFM	113 ICFM	121 ICFM	127 ICFM	134 ICFM	130 ICFM	137 ICFM
AIR HEADER SIZE	2"	2"	2"	2"	2"	2"	2"
BLOWER SELECTION	GARDNER DENVER						
BLOWER MODEL	3M	3M	3M	3M	3M	3M	3M
NOISE LEVEL	81 dB(A)	81 dB(A)	82 dB(A)	82 dB(A)	83 dB(A)	83 dB(A)	84 dB(A)
AIR TEMP. RISE	73° F	72° F	70° F	70° F	69° F	76° F	75° F
BLOWER INLET DIAMETER	2" NPT	2" NPT	2" NPT	2" NPT	2" NPT	2" NPT	2" NPT
BLOWER OUTLET DIAMETER	2" NPT	2" NPT	2" NPT	2" NPT	2" NPT	2" NPT	2" NPT
MOTOR SELECTION	5 HP	5 HP	5 HP	5 HP	5 HP	5 HP	5 HP
OPERATING POWER	2.5 kW	2.7 kW	2.8 kW	2.9 kW	3.1 kW	3.2 kW	3.4 kW
FULL LOAD CURRENT	19.5 A @ 230V 1-PH 60HZ 14.0/7.0 A @ 230/460V 1-PH 60HZ						

TABLE 3
STANDARD EQUIPMENT LIST

MODEL	FLOW EQ BLOWER			FLOW EQ DIFFUSERS			MAIN AIR BLOWER			AERATION DIFFUSERS			CHLORINE TABLET FEEDER			CONTROL PANEL			SOLIDS MIXING BLOWER			SOLIDS MIXING DIFFUSERS		
	QTY.	MAKE	MODEL	QTY.	MAKE	MODEL	QTY.	MAKE	MODEL	QTY.	MAKE	MODEL	QTY.	MAKE	MODEL	QTY.	MAKE	MODEL	QTY.	MAKE	MODEL	QTY.	MAKE	MODEL
A-8.0	1	GARDNER DENVER	2M	4	DIFFUSED GAS TECHNOLOGIES	DP-75	2	GARDNER DENVER	3M	16	DIFFUSED GAS TECHNOLOGIES	DP-75	1	NORWECO	XT2000	1	DELTA	PER DESIGN	1	GARDNER DENVER	2M	4	DIFFUSED GAS TECHNOLOGIES	DP-75
A-9.0	1	GARDNER DENVER	2M	4	DIFFUSED GAS TECHNOLOGIES	DP-75	2	GARDNER DENVER	3M	16	DIFFUSED GAS TECHNOLOGIES	DP-75	1	NORWECO	XT2000	1	DELTA	PER DESIGN	1	GARDNER DENVER	2M	4	DIFFUSED GAS TECHNOLOGIES	DP-75
A-10.0	1	GARDNER DENVER	2M	4	DIFFUSED GAS TECHNOLOGIES	DP-75	2	GARDNER DENVER	3M	16	DIFFUSED GAS TECHNOLOGIES	DP-75	1	NORWECO	XT2000	1	DELTA	PER DESIGN	1	GARDNER DENVER	2M	4	DIFFUSED GAS TECHNOLOGIES	DP-75
A-11.0	1	GARDNER DENVER	2M	4	DIFFUSED GAS TECHNOLOGIES	DP-75	2	GARDNER DENVER	3M	16	DIFFUSED GAS TECHNOLOGIES	DP-75	1	NORWECO	XT2000	1	DELTA	PER DESIGN	1	GARDNER DENVER	2M	4	DIFFUSED GAS TECHNOLOGIES	DP-75
A-12.0	1	GARDNER DENVER	2M	4	DIFFUSED GAS TECHNOLOGIES	DP-75	2	GARDNER DENVER	3M	16	DIFFUSED GAS TECHNOLOGIES	DP-75	1	NORWECO	XT2000	1	DELTA	PER DESIGN	1	GARDNER DENVER	2M	4	DIFFUSED GAS TECHNOLOGIES	DP-75
A-13.0	1	GARDNER DENVER	2M	8	DIFFUSED GAS TECHNOLOGIES	DP-75	2	GARDNER DENVER	3M	16	DIFFUSED GAS TECHNOLOGIES	DP-75	1	NORWECO	XT2000	1	DELTA	PER DESIGN	1	GARDNER DENVER	2M	8	DIFFUSED GAS TECHNOLOGIES	DP-75
A-14.0	1	GARDNER DENVER	2M	8	DIFFUSED GAS TECHNOLOGIES	DP-75	2	GARDNER DENVER	3M	16	DIFFUSED GAS TECHNOLOGIES	DP-75	1	NORWECO	XT2000	1	DELTA	PER DESIGN	1	GARDNER DENVER	2M	8	DIFFUSED GAS TECHNOLOGIES	DP-75



PRELIMINARY

NO.	DATE	INITIALS	DESCRIPTION



INFILTRATOR WATER TECHNOLOGIES, LLC
4 BUSINESS PARK RD, OLD SAYBROOK, CT 06475
WWW.INFILTRATORWATER.COM
PHONE: (800) 221-4436 / EMAIL: INFO@INFILTRATORWATER.COM

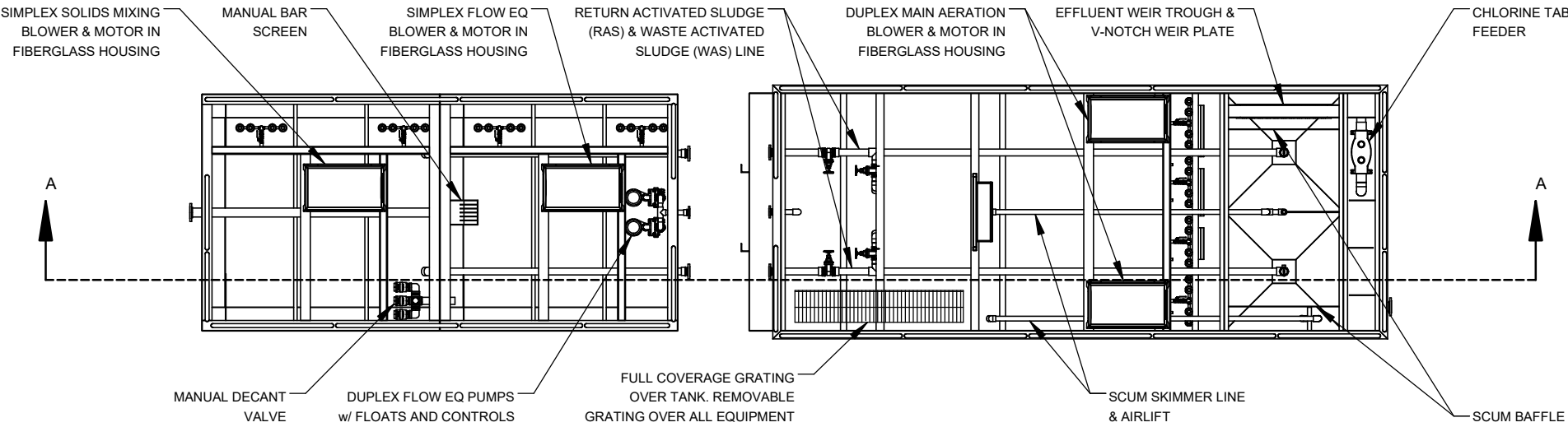
COPYRIGHT (C) 2025 INFILTRATOR WATER TECHNOLOGIES, LLC (IWT). INFORMATION CONTAINED HEREIN IS CONFIDENTIAL AND IS THE PROPERTY OF IWT. NO PART OF THIS DRAWING SHALL BE REPRODUCED, DISTRIBUTED, DISCLOSED, OR USED BY ANY PERSON OR ORGANIZATION, IN WHOLE OR IN PART, WITHOUT THE PRIOR WRITTEN PERMISSION OF IWT. THIS INFORMATION IS BASED ON SPECIFIC INPUT PARAMETERS AND IS FOR BUDGETARY OR PRELIMINARY USE ONLY. USE AND INTERPRETATION OF THIS INFORMATION AND DETERMINING THE APPLICABILITY TO A SPECIFIC PROJECT IS AT THE SOLE DISCRETION OF THE USER AND/OR THE ENGINEER OF RECORD.

ENVIRO-AIRE PACKAGE PLANT
A-8.0 THROUGH A-14.0

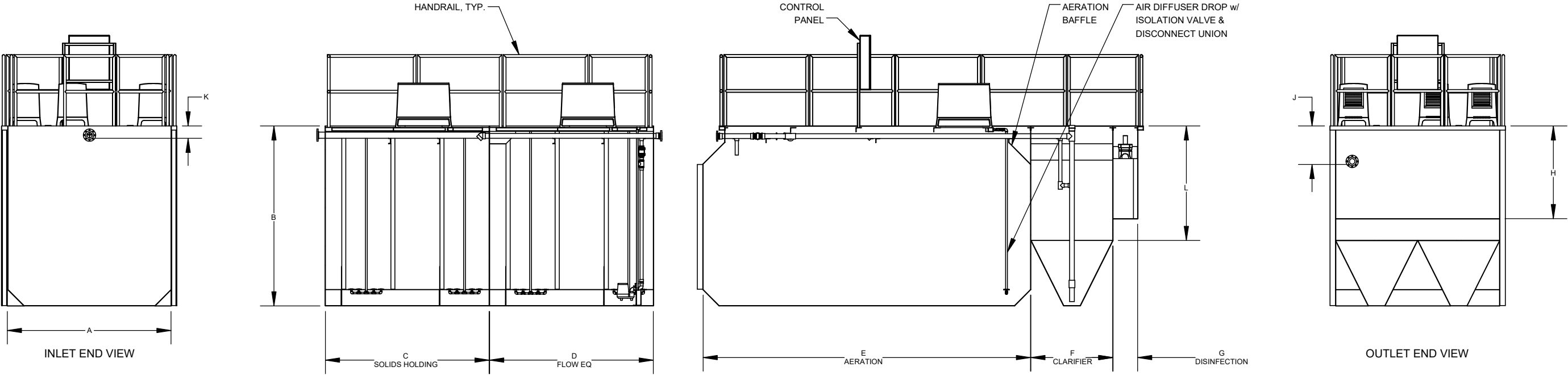
GENERAL ARRANGEMENT
DESIGN OVERVIEW

HORIZ. SCALE N/A	PROJECT NO. N/A
VERT. SCALE N/A	DATE 04/16/2025
DRAWN BY KJS	DESIGNED BY JLS
DRAWING NO. C1.0	SHEET NO. 01 of 02

TABLE 4 PACKAGE PLANT DIMENSIONS																				
MODEL	FLOW EQ VOLUME (GAL)	AERATION VOLUME (GAL)	CLARIFIER VOLUME (GAL)	CCT VOLUME (GAL)	SOLIDS HOLDING VOLUME (GAL)	A	B	C	D	E	F	G	H	J	K	L	SWD	INLET SIZE	OUTLET SIZE	
A-8.0	4,378	8,650	1,561	218	4,378	9' - 0"	10' - 0"	7' - 6"	7' - 6"	15' - 0"	4' - 6"	1' - 6"	4' - 6"	2' - 4"	0' - 11"	5' - 4"	8' - 6"	4"	4"	
A-9.0	4,670	9,234	1,561	252	4,670	9' - 0"	10' - 0"	8' - 0"	8' - 0"	16' - 0"	4' - 6"	1' - 6"	4' - 10"	2' - 4"	0' - 11"	5' - 4"	8' - 6"	4"	4"	
A-10.0	5,188	10,260	2,110	261	5,188	10' - 0"	10' - 0"	8' - 0"	8' - 0"	16' - 0"	5' - 0"	1' - 6"	4' - 8"	2' - 4"	0' - 11"	6' - 0"	8' - 6"	4"	4"	
A-11.0	5,837	11,556	2,110	299	5,837	10' - 0"	10' - 0"	9' - 0"	9' - 0"	18' - 0"	5' - 0"	1' - 6"	5' - 0"	2' - 4"	0' - 11"	6' - 0"	8' - 6"	4"	4"	
A-12.0	6,161	12,204	2,110	317	6,161	10' - 0"	10' - 0"	9' - 6"	9' - 6"	19' - 0"	5' - 0"	1' - 6"	5' - 2"	2' - 4"	0' - 11"	6' - 0"	8' - 6"	4"	4"	
A-13.0	6,872	13,626	2,483	355	6,872	10' - 0"	11' - 0"	9' - 6"	9' - 6"	19' - 0"	5' - 0"	1' - 6"	5' - 6"	2' - 4"	0' - 11"	7' - 0"	9' - 6"	4"	4"	
A-14.0	7,234	14,349	2,483	373	7,234	10' - 0"	11' - 0"	10' - 0"	10' - 0"	20' - 0"	5' - 0"	1' - 6"	5' - 8"	2' - 4"	0' - 11"	7' - 0"	9' - 6"	4"	4"	



PLAN VIEW



ELEVATION VIEW
SECTION A-A

PRELIMINARY

NO.	DATE	INITIALS	DESCRIPTION

Part of **ADS**

INFILTRATOR WATER TECHNOLOGIES, LLC
4 BUSINESS PARK RD, OLD SAYBROOK, CT 06475
WWW.INFILTRATORWATER.COM
PHONE: (800) 221-4436 / EMAIL: INFO@INFILTRATORWATER.COM

COPYRIGHT (C) 2025 INFILTRATOR WATER TECHNOLOGIES, LLC (IWT). INFORMATION CONTAINED HEREIN IS CONFIDENTIAL AND IS THE PROPERTY OF IWT. NO PART OF THIS DRAWING SHALL BE REPRODUCED, DISTRIBUTED, DISCLOSED, OR USED BY ANY PERSON OR ORGANIZATION, IN WHOLE OR IN PART, WITHOUT THE PRIOR WRITTEN PERMISSION OF IWT. THIS INFORMATION IS BASED ON SPECIFIC INPUT PARAMETERS AND IS FOR BUDGETARY OR PRELIMINARY USE ONLY. USE AND INTERPRETATION OF THIS INFORMATION AND DETERMINING THE APPLICABILITY TO A SPECIFIC PROJECT IS AT THE SOLE DISCRETION OF THE USER AND/OR THE ENGINEER OF RECORD.

ENVIRO-AIRE PACKAGE PLANT
A-8.0 THROUGH A-14.0

GENERAL ARRANGEMENT
DIMENSIONS

HORIZ. SCALE N/A	PROJECT NO. N/A
VERT. SCALE N/A	DATE 04/16/2025
DRAWN BY KJS	DESIGNED BY JLS
DRAWING NO. C1.1	SHEET NO. 02 of 02